

HAWAII PAPAYAS



USDA, NASS, Hawaii Field Office

National Agricultural Statistics Service
 In cooperation with Hawaii Department of Agriculture
 Agricultural Development Division
 1428 S. King Street, Honolulu, HI 96814-2512
 Telephone: (808) 973-9588
 FAX: (808) 973-2909
 Internet Web Site <http://www.nass.usda.gov/hi>

Frequency: Monthly
 Release: September 19, 2005

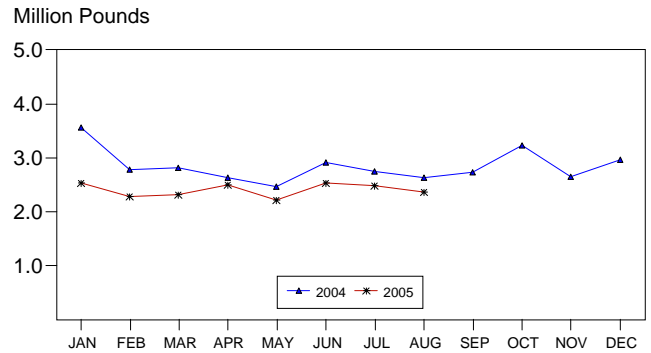
AUGUST FRESH PAPAYA UTILIZATION DOWN

Hawaii fresh papaya utilization is estimated at 2.4 million pounds for August 2005, down 4 percent from July 2005 and 10 percent less than August 2004.

In August, orchards experienced favorable weather with hot and humid conditions and periodic showers. Crop condition was generally fair to good. Routine spraying minimized disease incidences and kept weeds under control.

Papaya growers are expected to receive an estimated 36.0 cents per pound for fresh fruit in August, 3 percent (1.0 cent) lower than last month and 2 percent (0.6 cent) less than a year ago.

**PAPAYA: Fresh Utilization,
State of Hawaii, 2004-2005¹**



¹ 2005 Preliminary.

USDA, NASS, Hawaii Field Office

PAPAYA: Fresh Utilization, State of Hawaii, Month of August 2005

Island	Sales				Year ago	Year-to-date	
	Local ¹	Intrastate	Out-of-State	Total fresh		2004	2005
	<i>1,000 pounds</i>						
Hawaii.....	107	1,028	900	2,035	2,255	19,800	16,700
Kauai.....	45	0	0	45	50	355	320
Maui/Molokai/Oahu ²	216	4	70	290	325	2,385	2,215
State.....	368	1,032	970	2,370	2,630	22,540	19,235

¹ On island of production.

² Combined to avoid disclosure of individual operations.

MARK HUDSON
Director

STEVE P. GUNN
Deputy Director

REGINA W. HIDANO
Agricultural Statistician

SANDY K. NAKASONE
Statistical Assistant

PAPAYA: Acreage, State of Hawaii, 2005 with 2004 Comparison

Island	Total acreage in crop							
	March		June		September		December	
	2004	2005	2004	2005	2004	2005	2004	2005
Hawaii.....	1,900	2,265	1,800	2,355	1,920		2,050	
Kauai.....	50	35	40	40	40		40	
Maui/Molokai/Oahu.....	160	190	160	205	150		140	
State.....	2,110	2,490	2,000	2,600	2,110		2,230	
	Total bearing acres							
Hawaii.....	1,000	1,270	900	1,405	1,220		1,245	
Kauai.....	35	25	30	30	25		25	
Maui/Molokai/Oahu.....	125	140	125	145	125		130	
State.....	1,160	1,435	1,055	1,580	1,370		1,400	

PAPAYA: Fresh Farm Price, State of Hawaii, 2004-2005

Year	Jan.	Feb.	Mar.	Apr.	May	June	July	Aug.	Sep.	Oct.	Nov.	Dec.	Average
2004	<i>Cents per pound</i>												
	31.0	31.2	37.4	40.0	41.0	39.5	37.2	36.6	37.2	35.8	34.3	33.4	36.1
2005 ¹	31.0	37.0	40.0	42.0	44.0	37.0	37.0	36.0					

¹Preliminary.

Papaya Acreage Survey 2005 Results

In August 2005, papaya acreage for the State of Hawaii is estimated at 2,400 acres, up 20 percent from the same time a year ago. Bearing or harvested acres across the State increased 40 percent from August 2004 to 1,465 acres.

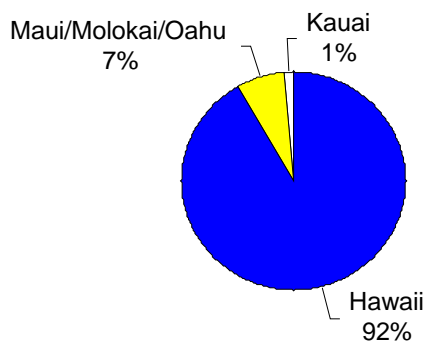
On Hawaii island, there were 156 farms compared to 141 last year. This island accounted for 92 percent of the State's total papaya acreage and 91 percent of the State's harvested acreage.

Maui/Molokai/Oahu followed with 38 growers and 7 percent of the total papaya acreage. Kauai's 11 producers had 1 percent of the State's total papaya acreage.

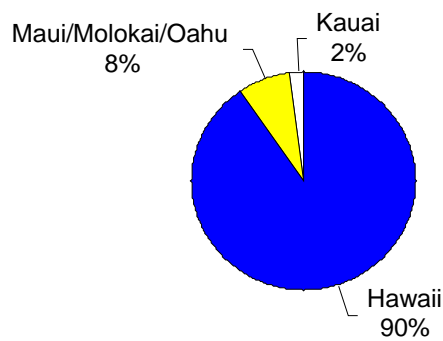
PAPAYA: Acreage, State of Hawaii, August 2005 with 2004 Comparison

Island	Farms		Bearing		Non-bearing		Total	
	2004	2005	2004	2005	2004	2005	2004	2005
	----- Acres -----							
Hawaii	141	156	900	1,330	900	870	1,800	2,200
Maui/Molokai/Oahu	47	38	125	110	30	55	155	165
Kauai	19	11	25	25	15	10	40	35
State	207	205	1,050	1,465	945	935	1,995	2,400

PAPAYA: Total Acreage, Island Distribution, State of Hawaii, August 2005 with 2004 Comparison



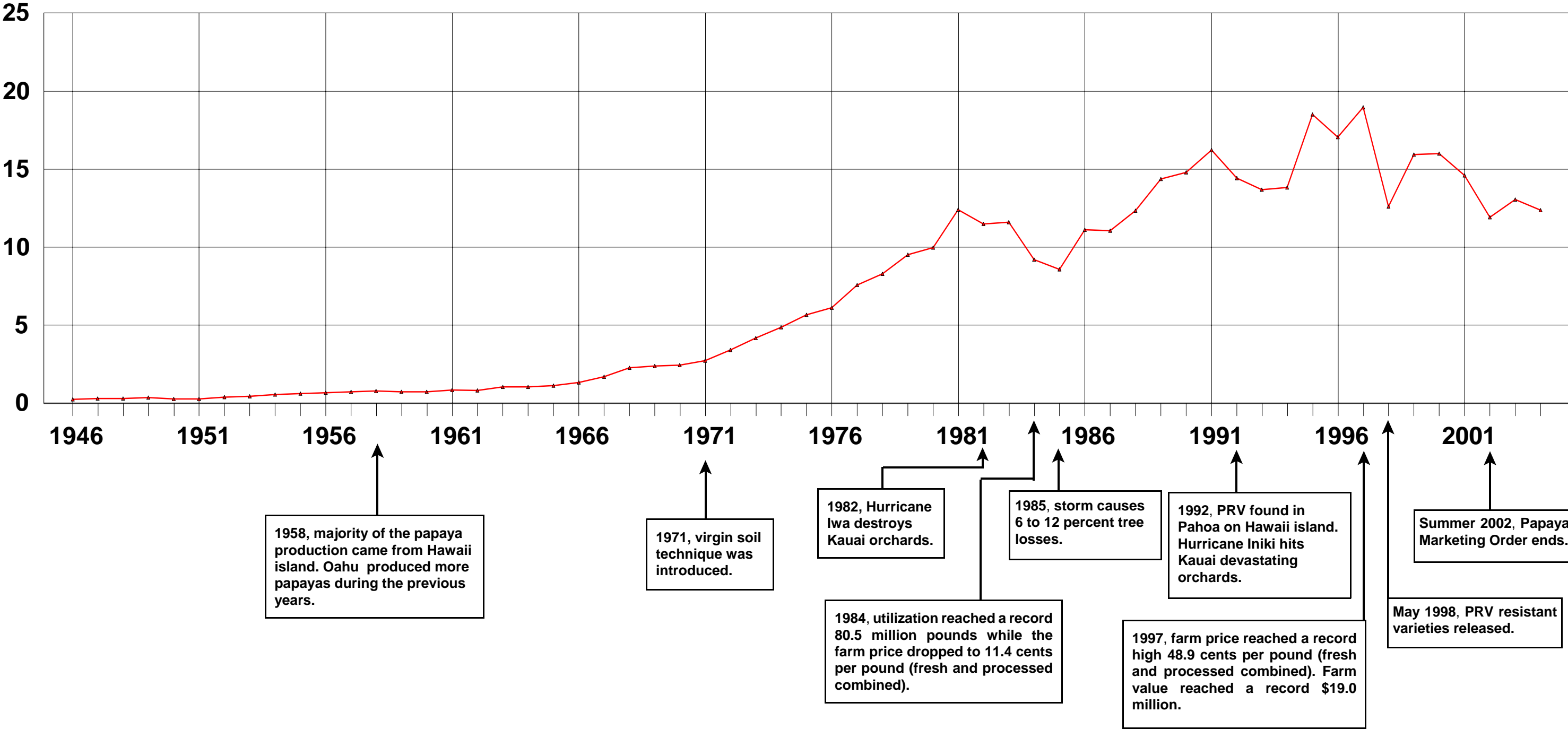
2005



2004

PAPAYA: Value of Utilized Production, State of Hawaii, 1946-2004

Million Dollars



USDA, NASS, Hawaii Field Office, in cooperation with Hawaii Department of Agriculture, Agricultural Development Division

Varietal 2005 Summary

Rainbow and Kapoho varieties were 53 and 30 percent of the State's total papaya acreage, respectively. Sunrise represented 9 percent of the acreage grown followed by "Other" varieties which made up the remaining 8 percent.

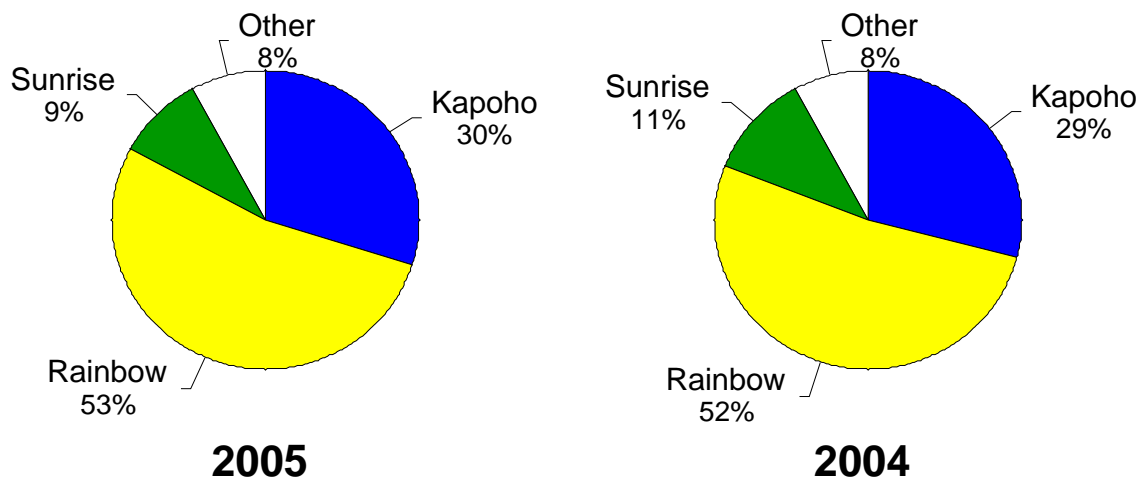
Rainbow represented 61 percent of the bearing acreage, compared to 50 percent from last August. Kapoho was being harvested from 20 percent of the bearing acreage compared to 32 percent a year ago. Sunrise made up 8 percent of the harvested acreage while "Other" varieties accounted for the remaining 11 percent.

PAPAYA: Varietal Distribution, State of Hawaii, August 2005 with 2004 Comparison

Variety	Bearing		Non-bearing		Total	
	2004	2005	2004	2005	2004	2005
	<i>Percent</i>					
Kapoho	32	20	26	44	29	30
Rainbow	50	61	56	41	52	53
Sunrise	10	8	13	10	11	9
Other ¹	8	11	5	5	8	8
Total	100	100	100	100	100	100

¹ Sunup combined with "Other" to avoid disclosure.

**PAPAYA: Total Acreage, Varietal Distribution,
State of Hawaii,
August 2005 with 2004 Comparison**



Hawaii Island 2005 Summary

According to the August 2005 papaya acreage survey, Hawaii island growers planted 58 percent of acreage in the Rainbow variety. Kapoho followed second with 32 percent of the acreage. Together, Kapoho and Rainbow represented 90 percent of the Hawaii island's 2,200 total papaya acres. "Other" varieties made up the remaining 10 percent of island's papaya acreage.

Hawaii island's bearing acreage in Rainbow and Kapoho was 66 percent and 22 percent, respectively. This compares to last year's 56 percent and 35 percent for Rainbow and Kapoho, respectively. "Other" varieties accounted for 12 percent compared to 9 percent last year.

PAPAYA: Hawaii Island Varietal Distribution, August 2005 with 2004 Comparison

Variety	Bearing		Non-bearing		Total	
	2004	2005	2004	2005	2004	2005
	<i>Percent</i>					
Kapoho	35	22	28	46	33	32
Rainbow	56	66	64	44	59	58
Other ¹	9	12	8	10	8	10
Total	100	100	100	100	100	100

¹ Sunrise combined with "Other".

PAPAYA: Hawaii Island Distribution within Variety, August 2005 with 2004 Comparison

Variety	Bearing		Non-bearing		Total	
	2004	2005	2004	2005	2004	2005
	<i>Percent</i>					
Kapoho	69	43	31	57	100	100
Rainbow	60	70	40	30	100	100
Other ¹	67	65	33	35	100	100
Total	64	61	36	39	100	100

¹ Sunrise combined with "Other".

PAPAYA: Bearing Acreage, Varietal Distribution, Hawaii Island, August 2005 with 2004 Comparison

