

HAWAII PAPAYAS



National Agricultural Statistics Service

Hawaii Agricultural Statistics Service
Hawaii Department of Agriculture
1428 S King Street, Honolulu, HI 96814-2512
(808) 973-9588
FAX (808) 973-2909
Internet Web Site <http://www.nass.usda.gov/hi>

Frequency: Monthly
Release: September 11, 2003

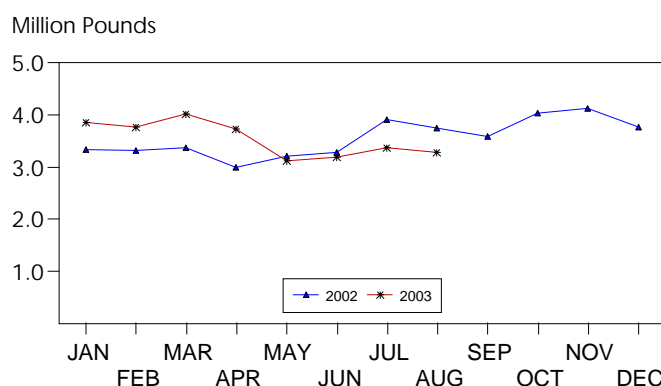
AUGUST FRESH UTILIZATION DOWN 3 PERCENT

Hawaii fresh papaya utilization is estimated at 3.3 million pounds for August 2003, down 3 percent from last month, and 13 percent lower than August 2002.

Weather conditions were variable during August with showers and sunshine over major papaya producing areas. Non-irrigated orchards have adequate soil moisture.

Papaya growers are expected to receive an estimated 32.0 cents per pound for fresh fruit in August, 9 percent (3.0 cents) lower than last month, but 16 percent (4.5 cents) higher than a year ago.

FRESH PAPAYA UTILIZATION STATE OF HAWAII, 2002-2003¹



¹ 2003 Preliminary.

HASS

FRESH PAPAYA UTILIZATION, STATE OF HAWAII, MONTH OF: August 2003

Island	Sales				Year ago	Year-to-date	
	Local ¹	Intrastate	Out-of-State	Total fresh		2002	2003
	<i>1,000 pounds</i>						
Hawaii.....	117	1,443	1,300	2,860	3,295	22,100	25,005
Kauai.....	13	27	5	45	85	830	400
Maui/Molokai/Oahu ²	341	9	20	370	365	4,250	2,945
State.....	471	1,479	1,325	3,275	3,745	27,180	28,350

¹ On island of production.

² Combined to avoid disclosure of individual operations.

DONALD A. MARTIN
State Agricultural Statistician

ARTHUR Y. OSAKI
Research Statistician

SANDY K. NAKASONE
Statistical Assistant

PAPAYA ACREAGE, STATE OF HAWAII, 2003 WITH COMPARISONS

Island	Total acreage in crop							
	March		June		September		December	
	2002	2003	2002	2003	2002	2003	2002	2003
Hawaii.....	2,200	2,015	1,920	1,925	1,925		1,925	
Kauai.....	80	55	75	65	60		55	
Maui/Molokai/Oahu.....	210	185	210	185	185		170	
State.....	2,490	2,255	2,205	2,175	2,170		2,150	
	Total bearing acres							
Hawaii.....	1,700	1,600	1,490	1,440	1,385		1,465	
Kauai.....	60	40	60	40	40		35	
Maui/Molokai/Oahu.....	170	95	175	95	75		80	
State.....	1,930	1,735	1,725	1,575	1,500		1,580	

FRESH PAPAYA FARM PRICE, STATE OF HAWAII, 2002-2003

Year	Jan.	Feb.	Mar.	Apr.	May	June	July	Aug.	Sep.	Oct.	Nov.	Dec.	Average
	<i>Cents per pound</i>												
2002	29.4	29.5	28.3	30.2	30.4	28.3	27.9	27.5	26.9	24.9	25.3	26.1	27.7
2003 ¹	28.0	32.0	35.0	36.0	38.0	38.0	35.0	32.0					

¹Preliminary.

Papaya Acreage Survey 2003 Results

Hawaii's August 2003 total papaya acreage is pegged at 2,380 acres, 10 percent higher than the same time a year ago. Bearing or harvested acres across the State were 3 percent fewer than last year.

The Big Island's 124 farms accounted for 91 percent of the State's total papaya acreage. Harvested acreage on the Big Island was 92 percent of the State's harvested papaya acreage, compared to 93 percent last year.

Maui/Molokai/Oahu followed with 24 growers and 7 percent of the total papaya acreage. Kauai's 15 producers had 2 percent of the State's total papaya acreage.

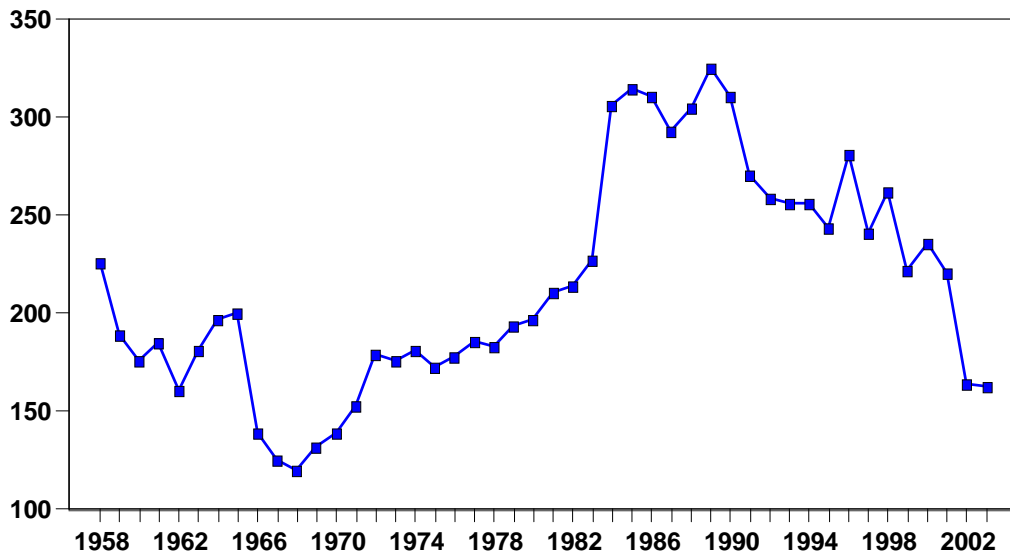
Papaya acreage, State of Hawaii, August 2003 with 2002¹ comparison

County	Farms		Bearing		Non-bearing		Total	
	2002	2003	2002	2003	2002	2003	2002	2003
	<i>Number</i>		<i>Acres</i>					
Hawaii	122	124	1,490	1,430	430	735	1,920	2,165
Maui/Honolulu	26	24	80	100	105	65	185	165
Kauai	15	15	40	30	20	20	60	50
State	163	163	1,610	1,560	555	820	2,165	2,380

¹Revised.

Papaya: Number of Farms State of Hawaii, 1958-2003*

Number of Farms

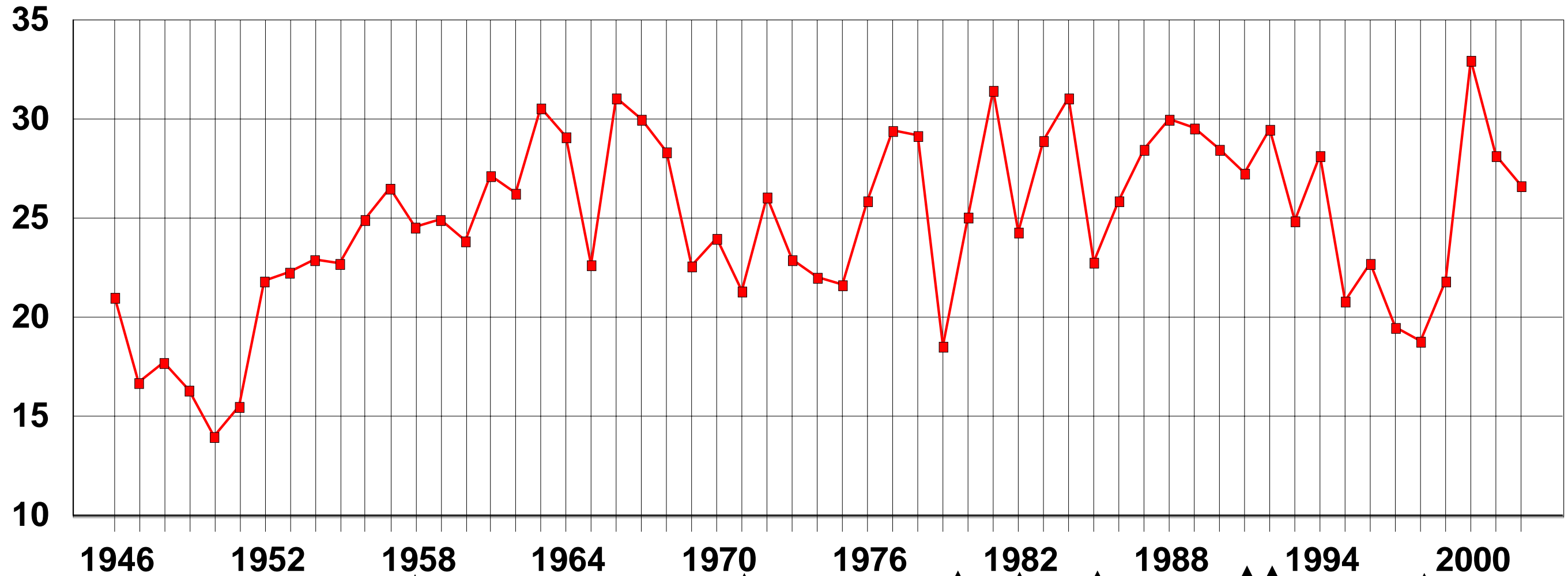


*2003 preliminary

Papaya Yields

State of Hawaii, 1946-2002

Pounds per acre (1,000)



1958, majority of production centered on Big Island. Previous years, production centered on Oahu.

1971, virgin soil technique introduced.

1979-80, severe rains; United Airlines strike.

1982, Hurricane Iwa destroys Kauai orchards.

1991, high tree losses due to phytophthora.

1985, storm causes 6 to 12 percent tree losses.

1992, PRV found in Pahoia, Hawaii.

May 1998, PRV resistant varieties released.

Varietal Summary

Rainbow and Kapoho varieties were 46 and 38 percent of the State's total papaya acreage, respectively. Sunrise represented 10 percent of the acreage grown followed by other varieties which made up the remaining 6 percent.

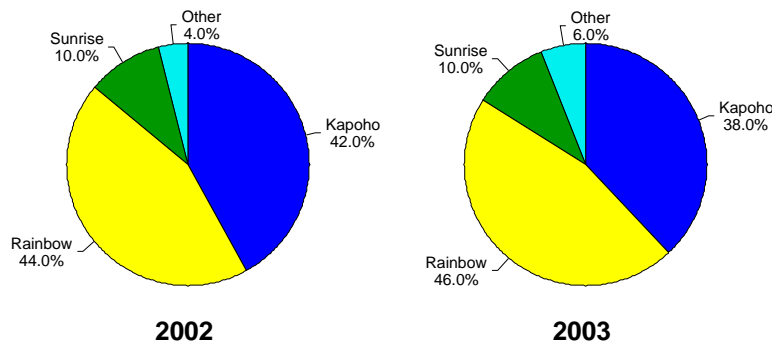
Kapoho represented 41 percent of the bearing acreage, compared to 49 percent from last August. Rainbow was being harvested from 44 percent of the bearing acreage compared to 37 percent a year ago.

Papaya varietal distribution, State of Hawaii, August 2003 with 2002 comparison

Variety	Bearing		Non-bearing		Total	
	2002	2003	2002	2003	2002	2003
	<i>Percent</i>					
Kapoho	49	41	24	31	42	38
Rainbow	37	44	60	51	44	46
Sunrise	8	9	13	13	10	10
Other ¹	6	6	3	5	4	6
Total	100	100	100	100	100	100

¹ Sunup combined with "Other" to avoid disclosure.

**Papaya: Varietal Distribution
State of Hawaii
August 2003 with 2002 Comparison**



Island Summary

On the Big Island, Rainbow represented 50 percent of acreage planted to papaya. Kapoho, which stood at 47 percent last year, represented 41 percent of the August 2003 Big Island papaya acreage. Together, Kapoho and Rainbow represented over 90 percent of the Big Island's 2,165 total papaya acres. "Other" varieties made up the remaining 9 percent of Big Island papaya acreage.

Big Island's bearing acreage in Rainbow and Kapoho was 47 percent and 45 percent, respectively. This compares with last year's 40 percent and 53 percent for Rainbow and Kapoho, respectively.

Papaya: Big Island varietal distribution, August 2003 with 2002 comparison

Variety	Bearing		Non-bearing		Total	
	2002	2003	2002	2003	2002	2003
	<i>Percent</i>					
Kapoho	53	45	29	34	47	41
Rainbow	40	47	66	56	47	50
Other ¹	7	8	5	10	6	9
Total	100	100	100	100	100	100

¹ Sunrise combined with "Other".

Papaya: Big Island distribution within variety, August 2003 with 2002 comparison

Variety	Bearing		Non-bearing		Total	
	2002	2003	2002	2003	2002	2003
	<i>Percent</i>					
Kapoho	83	72	17	28	100	100
Rainbow	61	62	39	38	100	100
Other ¹	79	62	21	38	100	100
Total	72	66	28	34	100	100

¹ Sunrise combined with "Other".

Papaya: Harvested Acreage Distribution Big Island, August 2003 with 2002 Comparison

