

HAWAII PAPAYAS

National Agricultural Statistics Service
USDA, Hawaii Field Office
1428 S. King Street
Honolulu, HI 96814-2512
Telephone: (808) 973-9588
FAX: (808) 973-2909
Internet Web Site <http://www.nass.usda.gov/hi>

Frequency: Monthly

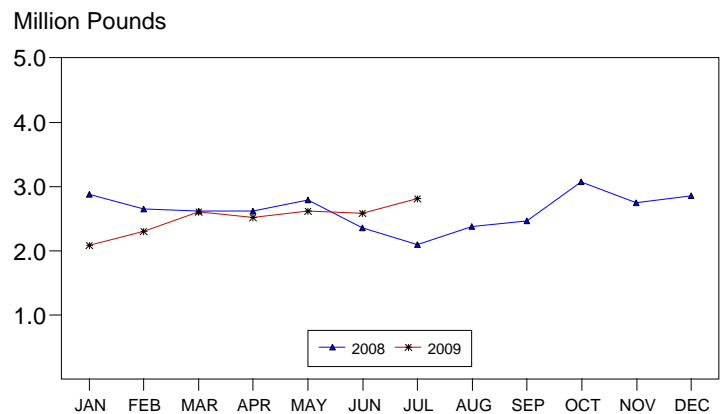
Release: September 17, 2009

MORE FRESH PAPAYA IN JULY

Hawaii fresh papaya utilization is estimated at 2.8 million pounds for July 2009, up 9 percent from June 2009 and 34 percent above July 2008. Fresh utilization for 2009 so far totaled 17.5 million pounds, down 3 percent when compared with the same period in a year ago.

In July, orchards experienced warm weather mixed with variable showers benefitting flowering and fruit ripening. Some gaps in the fruit columns were notice due to previous heavy rains earlier in the year. Young plantings made good progress. Favorable weather helped growers keep up the usual field maintenance.

PAPAYA: Fresh Utilization, State of Hawaii, 2008-2009¹



¹Data are preliminary for 2009.

Papaya growers are expected to receive an estimated 45.0 cents per pound for fresh fruit in July, 2 percent (1.0 cent) higher than June, but 11 percent (5.3 cents) below a year ago.

FRESH PAPAYA UTILIZATION, STATE OF HAWAII, 2009 WITH COMPARISONS¹

Month	Sales				Year ago	Year-to-date	
	Local ²	Intrastate	Out-of-State	Total fresh		2008	2009
	<i>1,000 pounds</i>						
June	252	1,163	1,170	2,585	2,350	15,895	14,700
July	262	1,268	1,275	2,805	2,095	17,990	17,505

¹Data are preliminary for 2009.

²On island of production.

PAPAYA ACREAGE, STATE OF HAWAII, 2009 WITH COMPARISONS ¹

County	Total acreage in crop							
	March		June		September		December	
	2008	2009	2008	2009	2008	2009	2008	2009
Hawaii.....	1,820	2,150	1,840	1,900	2,110		2,220	
Honolulu/Kauai/Maui ²	220	180	200	175	195		190	
State.....	2,040	2,330	2,040	2,075	2,305		2,410	

Total harvested acres ³								
Hawaii.....	1,275	1,350	1,185	1,200	1,185		1,330	
Honolulu/Kauai/Maui ²	155	120	130	115	135		130	
State.....	1,430	1,470	1,315	1,315	1,320		1,460	

¹ Data are preliminary for 2009.

² Kauai and Maui combined with Honolulu to avoid disclosure of individual operations.

³ Bearing acres where papayas were harvested.

FRESH PAPAYA FARM PRICE, STATE OF HAWAII, 2008-2009

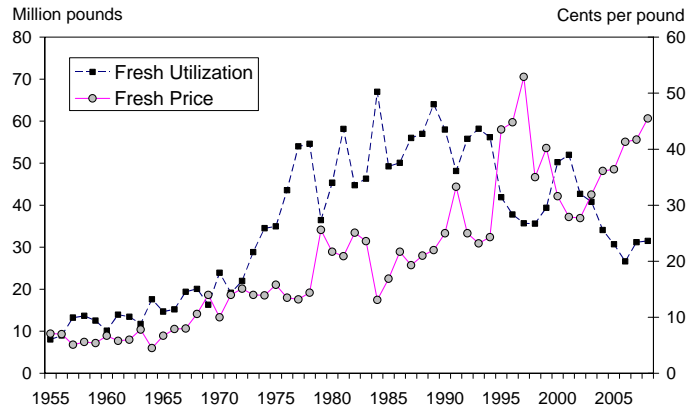
Year	Jan.	Feb.	Mar.	Apr.	May	June	July	Aug.	Sep.	Oct.	Nov.	Dec.	Average
	<i>Cents per pound</i>												
2008	43.0	44.8	47.4	47.8	49.7	49.2	50.3	49.4	47.4	42.1	39.1	39.0	45.5
2009 ¹	46.0	50.0	48.0	45.0	44.0	44.0	45.0						

¹ Data are preliminary for 2009.

2008 Papaya Output Slightly Higher

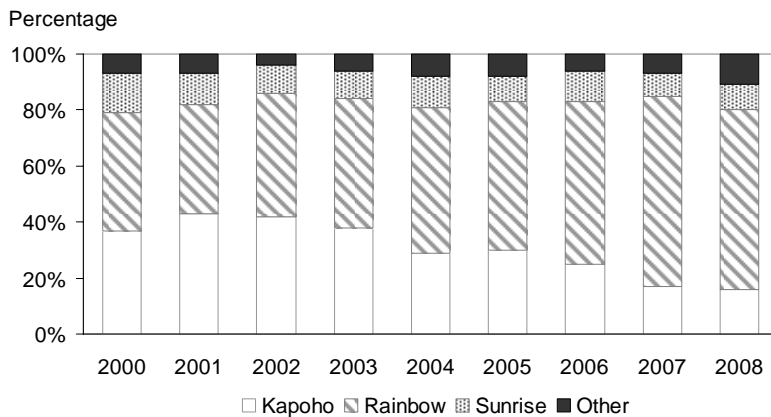
In 2008, papaya output totaled 33.5 million pounds, slightly above the previous year. Weather for 2008 began cool, windy, and wet. Conditions turned dry thereafter prompting various water restriction measures throughout the State. Orchards depending on natural rainfall were most affected with slower growth and fruit development. Winter rains helped to replenish wells and soil moisture levels. Growers stepped up spraying efforts to limit disease outbreaks. The high costs of inputs, insects and diseases control, and a shortage of seed were some grower concerns.

PAPAYA: Fresh Utilization and Price, State of Hawaii, 1955-2008



The biotechnology variety Rainbow made up 64 percent of total acres in 2008, compared with 68 percent in 2007. Rainbow is resistant to Papaya Ringspot Virus (PRV), a virus that devastated the Hawaii papaya industry from 1993 to 1999. The Kapoho variety was the standard for the papaya industry for many years; however, Kapoho is susceptible to PRV. Yields of Rainbow are higher during the first year of harvest compared to the Kapoho variety. In the second year of harvest, yields for Rainbow are comparable to the Kapoho variety. The Kapoho variety accounted for 16 percent of total acreage compared to 17 percent the previous year. Annual August surveys since year 2000 showed Rainbow and Kapoho as the major two varieties; however, in recent years more Rainbow acreage has been planted.

PAPAYA: Total Acreage, Varietal Distribution, State of Hawaii, 2000-2008



In 2008, the number of farms totaled 177, down 1 percent from the previous year. Harvested acreage increased 5 percent from 2007 to 1,380 acres.

Majority of papayas were sold fresh, making up 94 percent of the utilization and the remaining 6 percent was processed. Fresh and processed papayas were valued at \$14.4 million, 10 percent above 2007. The all papaya price averaged 43.0 cents per pound, 10 percent more than the previous year.

Papayas: Acreage, utilization, farm price and value, State of Hawaii, 1946-2008

Year	Farms	Production area	Utilization			Farm Price			Value of sales
			Processed	Fresh Mkt	All	Processed	Fresh Mkt	All	
		<i>Acres</i>	<i>----- 1,000 pounds -----</i>			<i>----- Cents per pound -----</i>			<i>\$1,000</i>
1946		360			7,565			3.2	241
1947		330			5,525			5.4	296
1948		400			7,100			4.3	303
1949		360			5,885			6.0	351
1950		460			6,450			4.2	270
1951		370			5,740			4.8	273
1952		320			7,005			5.7	397
1953		410			9,155			4.7	431
1954		470			10,785			5.2	556
1955		410	1,259	8,076	9,335	2.0	7.1	6.4	601
1956		430	1,746	8,989	10,735	2.1	7.0	6.2	661
1957		540	1,081	13,247	14,328	3.1	5.1	5.0	714
1958	226	610	1,300	13,682	14,982	2.3	5.6	5.3	797
1959	189	570	1,715	12,528	14,243	2.2	5.4	5.0	714
1960	176	500	1,815	10,130	11,945	2.4	6.7	6.0	719
1961	185	570	1,538	13,956	15,494	2.5	5.8	5.5	849
1962	161	540	738	13,472	14,210	2.5	6.0	5.8	826
1963	181	460	2,350	11,725	14,075	6.0	7.8	7.5	1,053
1964	197	750	4,266	17,614	21,880	5.8	4.5	4.7	1,032
1965	200	790	3,237	14,698	17,935	4.1	6.5	6.0	1,084
1966	139	600	3,455	15,225	18,680	3.7	7.9	7.1	1,334
1967	125	760	3,452	19,394	22,846	4.2	8.0	7.4	1,691
1968	120	830	3,465	20,085	23,550	3.9	10.6	9.6	2,260
1969	132	850	2,898	16,337	19,235	3.6	14.0	12.4	2,385
1970	139	1,040	1,022	23,938	24,960	3.9	10.0	9.8	2,436
1971	153	970	1,553	19,172	20,725	3.3	14.0	13.2	2,736
1972	179	985	3,776	21,959	25,735	2.9	15.1	13.3	3,423
1973	176	1,430	3,976	28,848	32,824	3.5	14.0	12.7	4,180
1974	181	1,690	2,695	34,529	37,224	3.1	13.9	13.1	4,871
1975	173	1,840	4,944	34,952	39,896	3.0	15.8	14.2	5,668
1976	178	1,930	6,449	43,588	50,037	3.8	13.5	12.3	6,134
1977	186	2,155	9,561	53,987	63,548	4.7	13.2	11.9	7,565
1978	183	2,190	9,376	54,624	64,000	4.6	14.4	13.0	8,304
1979	194	2,210	4,569	36,446	41,015	4.0	25.6	23.2	9,515

Continued on page 5

Papayas: Acreage, utilization, farm price and value, State of Hawaii, 1946-2008 -- Continued

Year	Farms	Production area	Utilization			Farm Price			Value of sales
			Processed	Fresh Mkt	All	Processed	Fresh Mkt	All	
		<i>Acres</i>	<i>----- 1,000 pounds -----</i>			<i>----- Cents per pound -----</i>			<i>\$1,000</i>
1980	197	1,950	3,556	45,360	48,916	3.4	21.7	20.4	9,964
1981	211	2,110	8,220	58,170	66,390	3.1	20.9	18.7	12,413
1982	214	2,170	7,980	44,770	52,750	3.1	25.1	21.8	11,484
1983	227	2,120	15,100	46,300	61,400	4.4	23.6	18.9	11,591
1984	306	2,590	13,500	67,000	80,500	3.1	13.1	11.4	9,196
1985	315	2,650	11,150	49,250	60,400	2.3	16.9	14.2	8,579
1986	311	2,355	10,900	50,100	61,000	2.3	21.7	18.2	11,123
1987	293	2,350	11,000	56,000	67,000	2.2	19.3	16.5	11,050
1988	305	2,300	12,000	57,000	69,000	3.2	21.0	17.9	12,354
1989	325	2,500	10,000	64,000	74,000	3.0	22.0	19.4	14,380
1990	311	2,400	10,500	58,000	68,500	2.9	25.0	21.6	14,805
1991	271	2,025	7,200	48,150	55,350	2.7	33.3	29.3	16,228
1992	259	2,415	15,500	55,800	71,300	3.0	25.0	20.2	14,415
1993	256	2,555	5,500	58,200	63,700	3.1	23.2	21.5	13,673
1994	256	2,200	5,800	56,200	62,000	3.0	24.3	22.3	13,831
1995	244	2,435	8,900	41,900	50,800	3.0	43.5	36.4	18,494
1996	281	1,835	4,000	37,800	41,800	3.0	44.8	40.8	17,054
1997	241	1,985	3,100	35,700	38,800	3.0	52.9	48.9	18,978
1998	262	2,120	4,300	35,600	39,900	3.0	35.0	31.6	12,589
1999	222	1,940	3,000	39,400	42,400	3.0	40.2	37.6	15,929
2000	236	1,650	4,250	50,250	54,500	3.0	31.6	29.4	16,007
2001	221	1,950	3,000	52,000	55,000	3.0	27.9	26.5	14,598
2002	164	1,720	3,200	42,700	45,900	3.0	27.7	26.0	11,924
2003	163	1,565	1,800	40,800	42,600	3.0	31.9	30.7	13,069
2004	207	¹ 1,265	1,700	34,100	35,800	3.0	36.1	34.5	12,361
2005	207	1,480	2,200	30,700	32,900	3.0	36.4	34.2	11,241
2006	170	1,530	2,100	26,600	28,700	3.0	41.3	38.5	11,049
2007	178	1,310	2,200	31,200	33,400	3.8	41.7	39.2	13,094
2008	177	1,380	2,000	31,500	33,500	3.0	45.5	43.0	14,393

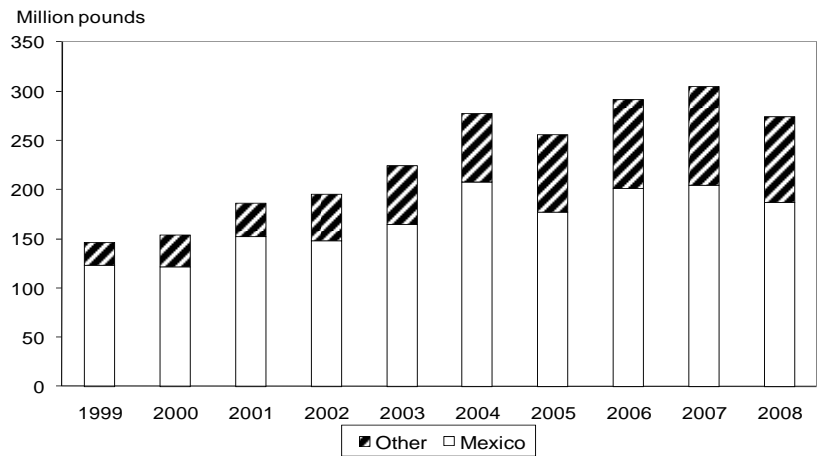
¹ Revised.

U.S. Papaya Imports Lower

Fresh papaya imports from foreign sources into the United States totaled 274.2 million pounds in 2008, down 10 percent from the previous year, according to the Department of Commerce. Mexico accounted for 187.2 million pounds or 68 percent of the total. Imports from Belize have contributed 23 percent of the total imports in 2008.

Total imports by type for 2008 decreased 9 percent from 2007 to 292.8 million pounds due to less fresh papayas. Fresh imports continued to account for the majority or 94 percent of total imports.

U.S. FRESH PAPAYA IMPORTS, 1999-2008



U.S. Imports of fresh papaya, by country, 2004-2008

Country	2004	2005	2006	2007	2008
<i>Million pounds</i>					
Mexico	207.7	176.8	201.0	204.2	187.2
Belize	53.4	61.1	74.7	73.8	62.1
Brazil	10.7	10.1	8.1	9.2	8.4
Jamaica	2.2	2.3	2.9	2.2	2.4
Dominican Republic	2.6	2.4	2.2	11.3	4.7
Guatemala	.9	2.7	2.2	3.4	8.2
Other	.3	.5	.3	.4	1.2
Total	277.8	255.9	291.4	304.5	274.2

* = Less than 100,000 pounds.

Source: U.S. Department of Commerce, Bureau of the Census.

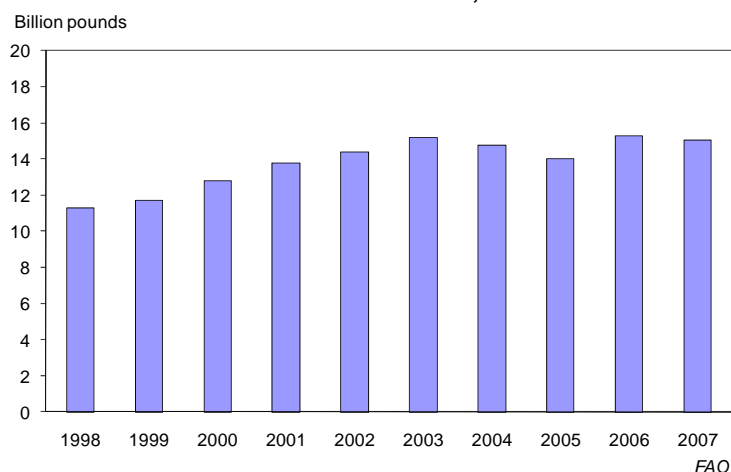
U.S. Imports of papaya, by type, 2004-2008

Type	2004	2005	2006	2007	2008
<i>Million pounds</i>					
Fresh	277.8	255.9	291.4	304.5	274.2
Frozen	2.1	2.7	2.7	2.2	3.7
Dried	3.9	4.0	3.3	4.8	4.4
Paste & Puree	.1	.8	.5	.4	.8
Pulp	1.2	1.1	1.4	1.5	1.4
Other	7.1	7.4	9.4	7.9	8.4
Total ¹	292.3	271.8	308.6	321.3	292.8

¹Total may not add due to rounding.

Source: U.S. Department of Commerce, Bureau of the Census.

WORLD PAPAYA PRODUCTION, 1998-2007



Information for 2008 was not available at the time of printing.

World papaya production, by country, 2004-2008 ¹

Country	2004	2005	2006	2007	2008
	<i>Million pounds</i>				
Brazil	3,555	3,470	4,184	3,994	N.A.
Colombia	226	303	² 360	457	N.A.
Congo, Dem Republic of	472	476	480	485	N.A.
Ethiopia	573	573	² 573	573	N.A.
India	1,543	1,543	1,543	1,543	N.A.
Indonesia	1,615	1,210	1,419	1,370	N.A.
Mexico	1,736	1,564	1,761	2,027	N.A.
Nigeria	1,664	1,666	1,673	1,687	N.A.
Peru	428	377	² 387	348	N.A.
Philippines	295	323	² 346	362	N.A.
Thailand	276	289	289	289	N.A.
USA	36	33	28	33	N.A.
Venezuela, Bolivarian Republic of	290	260	334	291	N.A.
Other	² 2,057	² 2,350	² 2,340	2,431	N.A.
Total ³	14,769	² 14,441	² 15,716	15,890	N.A.

N.A. = Not available.

¹Data quality can be official, semi-official, estimates, or calculated.

²Revised.

³Total may not add due to rounding.

Source: Food and Agriculture Organization (FAO), FAOSTAT data, <http://faostat.fao.org/site/291/default.aspx> accessed on 9/9/2009

MARK E. HUDSON
Director

KING J. WHETSTONE
Deputy Director

REGINA W. HIDANO
Agricultural Statistician

SANDY K. NAKASONE
Statistical Assistant

Contributions by:

NAOMI LANDGRAF
Maui County

DAVID MATTICE & SARA KAMIBAYASHI
Hawaii County

JUNE OKAMURA
Honolulu County & Kauai County

NASDA Enumerators