

HAWAII PAPAYAS



National Agricultural Statistics Service

Hawaii Agricultural Statistics
Hawaii Department of Agriculture
1428 S King Street, Honolulu, HI 96814-2512
(808) 973-9588
FAX (808) 973-2909
Internet Web Site <http://www.nass.usda.gov/hi>

Frequency: Monthly
Release: August 12, 2004

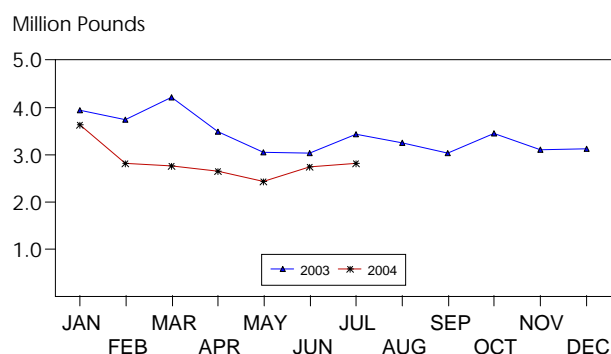
JULY FRESH PAPAYA UTILIZATION UP 2 PERCENT FROM LAST MONTH

Hawaii fresh papaya utilization is estimated at 2.81 million pounds for July 2004, 2 percent higher than last month, but 18 percent lower than a year ago. Year-to-date fresh sales were 20 percent lower than the same 7-month period of 2003. Strike affecting barges during the beginning of July impacted movement of interisland cargo. Strike lasted three days, but delays and uncertainty spanned a longer period which affected surface movement of fruit between islands.

Weather conditions over the major producing areas were variable during July. Mostly sunny skies were interspersed with periods of light showers.

Papaya growers are expected to receive an estimated 41.0 cents per pound for fresh fruit in July, 11 percent (4.0 cents) higher than last month and 29 percent (9.2 cents) more than a year ago.

FRESH PAPAYA UTILIZATION STATE OF HAWAII, 2003-2004¹



¹ 2004 Preliminary.

HAS

FRESH PAPAYA UTILIZATION, STATE OF HAWAII, MONTH OF: July 2004

Island	Sales				Year ago	Year-to-date	
	Local ¹	Intrastate	Out-of-State	Total fresh		2003	2004
	<i>1,000 pounds</i>						
Hawaii.....	110	1,260	1,100	2,470	3,010	21,945	17,540
Kauai.....	46	4	0	50	45	345	305
Maui/Molokai/Oahu ²	214	6	70	290	370	2,575	1,985
State.....	370	1,270	1,170	2,810	3,425	24,865	19,830

¹ On island of production.

² Combined to avoid disclosure of individual operations.

DONALD A. MARTIN
Director

STEVE P. GUNN
Deputy Director

ARTHUR Y. OSAKI
Research Statistician

SANDY K. NAKASONE
Statistical Assistant

PAPAYA ACREAGE, STATE OF HAWAII, 2004 WITH COMPARISONS

Island	Total acreage in crop							
	March		June		September		December	
	2003	2004	2003	2004	2003	2004	2003	2004
Hawaii.....	2,005	1,900	1,915	1,800	2,155		1,990	
Kauai.....	60	50	65	40	45		50	
Maui/Molokai/Oahu.....	195	160	190	160	170		170	
State.....	2,260	2,110	2,170	2,000	2,370		2,210	
	Total bearing acres							
Hawaii.....	1,375	1,000	1,430	900	1,420		1,195	
Kauai.....	40	40	40	30	30		35	
Maui/Molokai/Oahu.....	100	125	105	125	115		120	
State.....	1,515	1,165	1,575	1,055	1,565		1,350	

FRESH PAPAYA FARM PRICE, STATE OF HAWAII, 2003-2004

Year	Jan.	Feb.	Mar.	Apr.	May	June	July	Aug.	Sep.	Oct.	Nov.	Dec.	Average
	<i>Cents per pound</i>												
2003	30.7	32.6	32.8	34.1	33.8	35.0	31.8	30.1	31.1	31.6	29.6	30.8	32.0
2004 ¹	30.0	31.0	39.0	45.0	53.0	37.0	41.0						

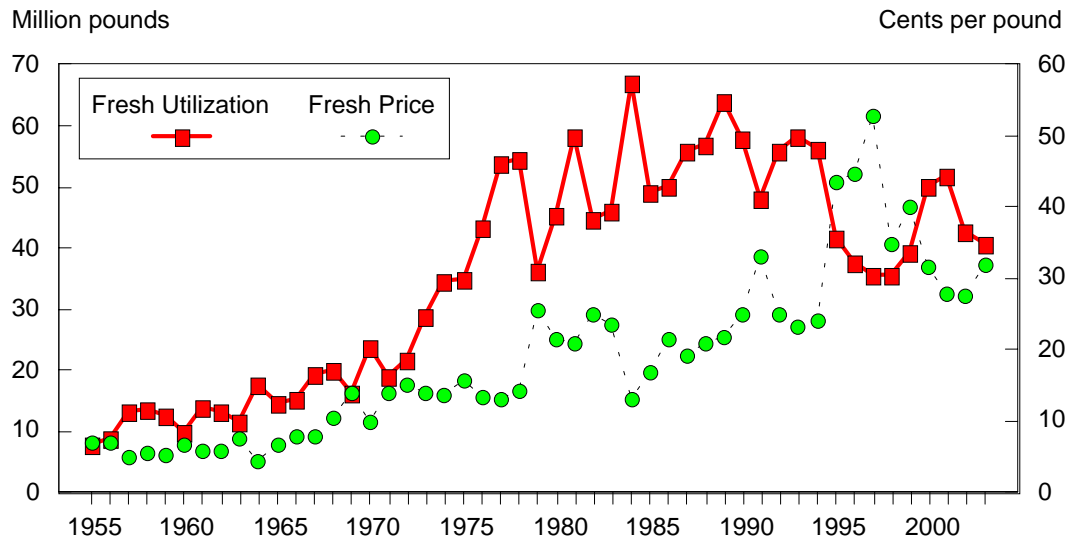
¹Preliminary.

2003 Papaya Output Declines

Papaya output in 2003 totaled 42.6 million pounds, 7 percent lower than 2002. Fewer harvested acres and dry conditions contributed to lower output in 2003. A drier than normal December 2002 and little to no rainfall during the months of January, March, and two weeks spanning May-June adversely affected flowering in non-irrigated papaya orchards, where greater than 90 percent of bearing acreage is located. Also affecting fruit maturation were three consecutive dry weeks spanning September and October.

The biotechnology variety Rainbow made up 44 percent of bearing acres in 2003, compared to 37 percent in 2002. Rainbow is resistant to Papaya Ringspot Virus (PRV), a virus that devastated the Hawaii papaya industry from 1993 to 1999. The Kapoho variety was the standard for the papaya industry for many years, however, Kapoho is susceptible to PRV. Yields of Rainbow are high during the first year of harvest compared to the Kapoho variety. In the second year of harvest, yields for Rainbow are comparable to the Kapoho variety. Routine field inspections and roguing of infected trees kept losses to PRV light. The Kapoho variety comprised 41 percent of harvested acreage as Japan, which is a major export market, does not accept the biotechnology variety Rainbow.

FRESH PAPAYA UTILIZATION & PRICE,
STATE OF HAWAII, 1955-2003



Major events which affected mainly local sales in 2003 were the war with Iraq, Severe Acute Respiratory Syndrome (SARS), and a month-long bus strike in Honolulu. The war with Iraq and SARS depressed tourist arrivals while the bus strike put a damper on product sales in Honolulu's Chinatown which relies heavily on people traveling by bus.

The State's harvested papaya acreage was pegged at 1,565 acres for 2003, 9 percent lower than 2002, and the lowest level since 1973.

Number of farms in 2003 totaled 163, virtually unchanged compared to 2002.

Fresh output from the Island of Hawaii represented 88 percent of the State's total in 2003, up from 84 percent the previous year. In comparison, the Island of Hawaii accounted for over 90 percent of the State's fresh papaya production from 1986 through 1996.

Value of utilization (fresh and processed) was pegged at \$13.1 million, 10 percent higher than 2002. Papaya price of 30.7 cents per pound rose 18 percent from 2002.

Papayas: Acreage, utilization, farm price and value, State of Hawaii, 1946-2003

Year	Farms	Production area	Utilization			Farm Price			Value of sales
			Processed	Fresh Mkt	All	Processed	Fresh Mkt	All	
		<i>Acres</i>	<i>1,000 pounds</i>			<i>Cents per pound</i>			<i>\$1,000</i>
1946		360			7,565			3.2	241
1947		330			5,525			5.4	296
1948		400			7,100			4.3	303
1949		360			5,885			6.0	351
1950		460			6,450			4.2	270
1951		370			5,740			4.8	273
1952		320			7,005			5.7	397
1953		410			9,155			4.7	431
1954		470			10,785			5.2	556
1955		410	1,259	8,076	9,335	2.0	7.1	6.4	601
1956		430	1,746	8,989	10,735	2.1	7.0	6.2	661
1957		540	1,081	13,247	14,328	3.1	5.1	5.0	714
1958	226	610	1,300	13,682	14,982	2.3	5.6	5.3	797
1959	189	570	1,715	12,525	14,243	2.2	5.4	5.0	714
1960	176	500	1,815	10,130	11,945	2.4	6.7	6.0	719
1961	185	570	1,538	13,956	15,494	2.5	5.8	5.5	849
1962	161	540	738	13,472	14,210	2.5	6.0	5.8	826
1963	181	460	2,350	11,725	14,075	6.0	7.8	7.5	1,053
1964	197	750	4,266	17,614	21,880	5.8	4.5	4.7	1,032
1965	200	790	3,237	14,698	17,935	5.3	6.7	6.2	1,120
1966	139	600	3,455	15,225	18,680	3.7	7.9	7.1	1,334
1967	125	760	3,452	19,394	22,846	4.2	8.0	7.4	1,691
1968	120	830	3,465	20,085	23,550	3.9	10.6	9.6	2,260
1969	132	850	2,898	16,337	19,235	3.6	14.0	12.4	2,385
1970	139	1,040	1,022	23,938	24,960	3.9	10.0	9.8	2,436
1971	153	970	1,553	19,172	20,725	3.3	14.0	13.2	2,736
1972	179	985	3,776	21,959	25,735	2.9	15.1	13.3	3,423
1973	176	1,430	3,976	28,848	32,824	3.5	14.0	12.7	4,180
1974	181	1,690	2,695	34,529	37,224	3.1	13.9	13.1	4,871
1975	173	1,840	4,944	34,952	39,896	3.0	15.8	14.2	5,668
1976	178	1,930	6,449	43,588	50,037	3.8	13.5	12.3	6,134
1977	186	2,155	9,561	53,987	63,548	4.7	13.2	11.9	7,565
1978	183	2,190	9,376	54,624	64,000	4.6	14.4	13.0	8,304
1979	194	2,210	4,569	36,446	41,015	4.0	25.6	23.2	9,515

Continued on page 5

Papayas: Acreage, utilization, farm price and value, State of Hawaii, 1946-2003 – Continued

Year	Farms	Production area	Utilization			Farm Price			Value of sales
			Processed	Fresh Mkt	All	Processed	Fresh Mkt	All	
		<i>Acres</i>	<i>1,000 pounds</i>			<i>Cents per pound</i>			<i>\$1,000</i>
1980	197	1,950	3,556	45,360	48,916	3.4	21.7	20.4	9,964
1981	211	2,110	8,220	58,170	66,390	3.1	20.9	18.7	12,413
1982	214	2,170	7,980	44,770	52,750	3.1	25.1	21.8	11,484
1983	227	2,120	15,100	46,300	61,400	4.4	23.6	18.9	11,591
1984	306	2,590	13,500	67,000	80,500	3.1	13.1	11.4	9,196
1985	315	2,650	11,150	49,250	60,400	2.3	16.9	14.2	8,579
1986	311	2,355	10,900	50,100	61,000	2.3	21.7	18.2	11,123
1987	293	2,350	11,000	56,000	67,000	2.2	19.3	16.5	11,050
1988	305	2,300	12,000	57,000	69,000	3.2	21.0	17.9	12,354
1989	325	2,500	10,000	64,000	74,000	3.0	22.0	19.4	14,380
1990	311	2,400	10,500	58,000	68,500	2.9	25.0	21.6	14,805
1991	271	2,025	7,200	48,150	55,350	2.7	33.3	29.3	16,228
1992	259	2,415	15,500	55,800	71,300	3.0	25.0	20.2	14,415
1993	256	2,555	5,500	58,200	63,700	3.1	23.2	21.5	13,673
1994	256	2,200	5,800	56,200	62,000	3.0	24.3	22.3	13,831
1995	244	2,435	8,900	41,900	50,800	3.0	43.5	36.4	18,494
1996	281	1,835	4,000	37,800	41,800	3.0	44.8	40.8	17,054
1997	241	1,985	3,100	35,700	38,800	3.0	52.9	48.9	18,978
1998	262	2,120	4,300	35,600	39,900	3.0	35.0	31.6	12,589
1999	222	1,940	3,000	39,400	42,400	3.0	40.2	37.6	15,929
2000	236	1,650	4,250	50,250	54,500	3.0	31.6	29.4	16,007
2001	221	1,950	3,000	52,000	55,000	3.0	27.9	26.5	14,598
2002	164	1,720	3,200	42,700	45,900	3.0	27.7	26.0	11,924
2003	163	1,565	1,800	40,800	42,600	3.0	31.9	30.7	13,069

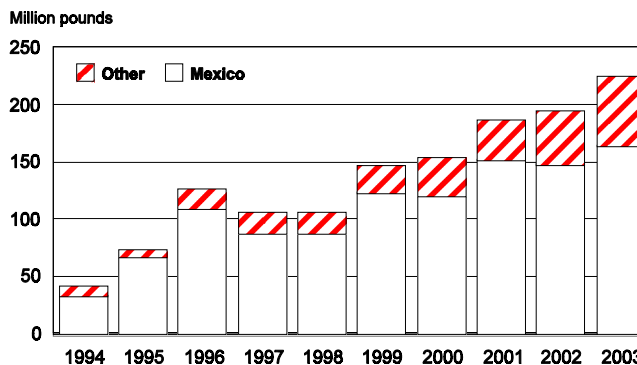
U.S. Papaya Imports

U.S. imports of papaya totaled 239.6 million pounds in 2003, according to Department of Commerce data. Fresh fruit imports of 224.6 million pounds made up the bulk of papaya imports and accounted for 94 percent of the total.

After steadily climbing to 126.1 million pounds in 1996, fresh papaya imports took a dip the following two years before resuming its upward trend. Fresh imports in 2003 were 15 percent more than 2002.

The top three sources of fresh papaya imports were Mexico, Belize, and Brazil. Mexico continued to maintain the lions share of fresh papaya imports and accounted for 73 percent of fresh papaya imports in 2003, with 164.5 million pounds. However, its market share has slowly declined from a high of 91 percent in 1995. Imports of fresh papaya from Belize and Brazil increased 43 percent and 23 percent, respectively.

U.S. FRESH PAPAYA IMPORTS, 1994-2003



U.S. Imports of fresh papaya, by country, 1999-2003

Country	1999	2000	2001	2002	2003
<i>Million pounds</i>					
Mexico	123.3	121.5	151.9	147.6	164.5
Belize	8.5	12.3	12.9	24.3	34.7
Brazil	6.2	10.3	11.2	12.8	15.8
Jamaica	4.2	3.4	3.5	4.2	3.3
Dominican Republic	2.6	5.6	6.3	5.3	5.5
Other	1.8	1.0	.4	1.0	.8
Total	146.6	154.1	186.2	195.2	224.6

U.S. Imports of papaya, by type, 1999-2003

Product	1999	2000	2001	2002	2003
<i>Million pounds</i>					
Fresh	146.6	154.1	186.2	195.2	224.6
Frozen	1.0	1.5	1.2	1.5	1.5
Dried	2.2	2.1	3.2	3.5	4.9
Paste & Puree	.9	.6	.8	.1	.1
Pulp	.2	.4	.5	.6	1.1
Other	6.2	5.8	6.4	7.0	7.4
Total¹	157.0	164.4	198.3	207.9	239.6

¹ Sum of products may not add to total due to rounding.

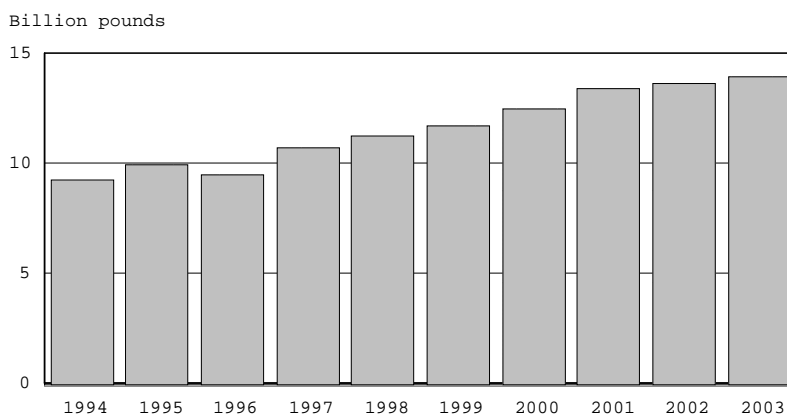
Source: U.S. Department of Commerce, Bureau of the Census.

World Papaya Production

World papaya production for 2003 is estimated at 13.98 billion pounds, according to the Food and Agriculture Organization.

Brazil continues as the largest producer and its estimated 2003 production of 3.5 billion pounds accounted for 25 percent of the world's output. Mexico was the second largest producer with an estimated 2.1 billion pounds followed by Nigeria and India with 1.7 and 1.5 billion pounds, respectively.

WORLD PAPAYA PRODUCTION, 1994-2003



World papaya production, by country, 1999-2003

Country	1999	2000	2001	2002	2003
	<i>Million pounds</i>				
Brazil	3,091	3,174	3,283	3,522	3,527
India	1,455	1,543	1,543	1,543	1,543
Indonesia	992	946	1,104	1,083	1,083
Mexico	1,255	1,482	1,926	1,932	2,107
Nigeria	1,649	1,649	1,649	1,664	1,664
Thailand	262	262	265	265	276
USA	42	55	55	46	43
Other	2,946	3,407	3,571	3,594	3,738
Total¹	11,693	12,518	13,396	13,650	13,982

Source: Food and Agriculture Organization (FAO), FAOSTAT data, 2004.