

HAWAII PAPAYAS



National Agricultural Statistics Service

Hawaii Agricultural Statistics Service
 Hawaii Department of Agriculture
 Box 22159, Honolulu, HI 96823-2159
 (808) 973-9588
 FAX (808) 973-2909
 Internet Web Site <http://www.nass.usda.gov/hi>

Frequency: Monthly
 Release: July 12, 2001

JUNE PAPAYA PRODUCTION PEGGED AT 4.8 MILLION POUNDS

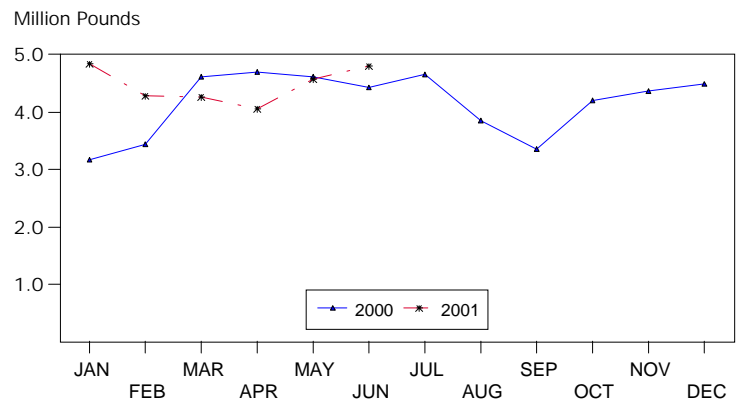
Hawaii fresh papaya production is estimated at 4.8 million pounds for June, 5 percent higher than May and 8 percent higher than June 2000. Year-to-date fresh sales were 7 percent higher than the same 6-month period of 2000.

Weather conditions were variable for June with a mix of sunshine and showers. Soil moisture in non-irrigated orchards has been adequate. Longer daylength and warm temperatures were favorable toward orchard growth and fruit development.

Area in crop totaled 3,535 acres, 24 percent higher than March and 37 percent more than last year. Harvested area, at 2,035 acres, was relatively unchanged from March but 28 percent higher than last June.

Papaya growers are expected to receive an estimated 32.0 cents per pound for fresh fruit in June, 9 percent (3.0 cents) lower than May but unchanged compared to last June.

FRESH PAPAYA UTILIZATION STATE OF HAWAII, 2000-2001¹



¹ 2000-2001 Preliminary.

HASS

FRESH PAPAYA UTILIZATION, STATE OF HAWAII, MONTH OF: June 2001

Island	Sales				Year ago	Year-to-date	
	Local ¹	Intrastate	Out-of-State	Total fresh		2000	2001
	<i>1,000 pounds</i>						
Hawaii.....	119	1,386	2,055	3,560	2,985	15,945	20,115
Kauai.....	49	71	70	190	290	2,705	1,020
Maui/Molokai/Oahu ²	687	3	360	1,050	1,150	6,325	5,700
State.....	855	1,460	2,485	4,800	4,425	24,975	26,835

¹ On island of production.

² Combined to avoid disclosure of individual operations.

DONALD A. MARTIN
 State Agricultural Statistician

ARTHUR Y. OSAKI
 Research Statistician

SANDY K. NAKASONE
 Statistical Assistant

PAPAYA ACREAGE, STATE OF HAWAII, 2001 WITH COMPARISONS

Island	Total acreage in crop							
	March		June		September		December	
	2000	2001	2000	2001	2000	2001	2000	2001
Hawaii.....	2,100	2,270	1,600	3,000	2,050		2,040	
Kauai.....	325	120	340	105	235		185	
Maui/Molokai/Oahu.....	665	470	645	430	470		470	
State.....	3,090	2,860	2,585	3,535	2,755		2,695	
	Total bearing acres							
Hawaii.....	1,010	1,660	950	1,670	1,190		1,495	
Kauai.....	185	85	200	80	160		125	
Maui/Molokai/Oahu.....	460	280	435	285	260		255	
State.....	1,655	2,025	1,585	2,035	1,610		1,875	

FRESH PAPAYA FARM PRICE, STATE OF HAWAII, 2000-2001

Year	Jan.	Feb.	Mar.	Apr.	May	June	July	Aug.	Sep.	Oct.	Nov.	Dec.	Average
	<i>Cents per pound</i>												
2000 ¹	37.0	41.0	36.0	35.0	37.0	32.0	28.0	27.0	33.0	29.0	26.0	20.0	
2001 ¹	21.0	28.0	32.0	37.0	35.0	32.0							

¹ Preliminary.