

HAWAII PAPAYAS



National Agricultural Statistics Service

Hawaii Agricultural Statistics Service
Hawaii Department of Agriculture
Box 22159, Honolulu, HI 96823-2159
(808) 973-9588
FAX (808) 973-2909
Internet Web Site <http://www.nass.usda.gov/hi>

Frequency: Monthly
Release: June 15, 2001

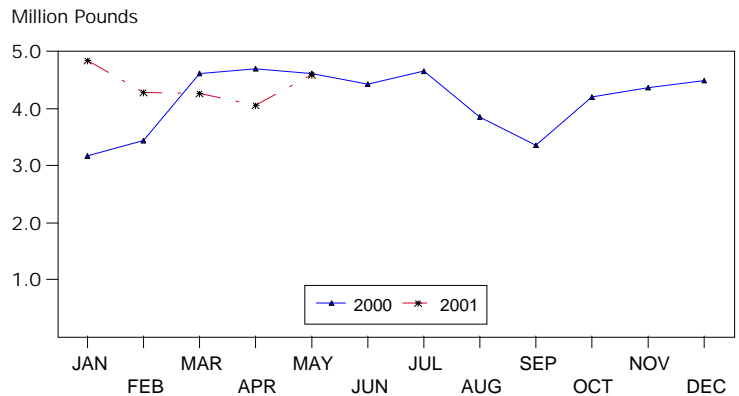
MAY FRESH PAPAYA PRODUCTION 12 PERCENT HIGHER THAN APRIL

Hawaii fresh papaya production is estimated at 4.57 million pounds for May, 12 percent higher than April but 1 percent lower than May 2000.

May weather conditions were variable with showers and sunshine over major papaya producing areas. Close monitoring for Papaya Ringspot virus has kept incidence of infected trees low.

Papaya growers are expected to receive an estimated 35.0 cents per pound for fresh fruit in May, 5 percent (2.0 cents) lower than April and last year.

FRESH PAPAYA UTILIZATION STATE OF HAWAII, 2000-2001¹



¹ 2000-2001 Preliminary.

HASS

FRESH PAPAYA UTILIZATION, STATE OF HAWAII, MONTH OF: May 2001

| Island | Sales | | | | Year ago | Year-to-date | |
|--------------------------------------|---------------------|------------|--------------|-------------|----------|--------------|--------|
| | Local ¹ | Intrastate | Out-of-State | Total fresh | | 2000 | 2001 |
| | <i>1,000 pounds</i> | | | | | | |
| Hawaii..... | 120 | 1,175 | 2,150 | 3,445 | 2,960 | 12,960 | 16,555 |
| Kauai..... | 37 | 58 | 80 | 175 | 575 | 2,415 | 830 |
| Maui/Molokai/Oahu ² | 475 | 5 | 470 | 950 | 1,090 | 5,175 | 4,650 |
| State..... | 632 | 1,238 | 2,700 | 4,570 | 4,625 | 20,550 | 22,035 |

¹ On island of production.

² Combined to avoid disclosure of individual operations.

DONALD A. MARTIN
State Agricultural Statistician

ARTHUR Y. OSAKI
Research Statistician

SANDY K. NAKASONE
Statistical Assistant

PAPAYA ACREAGE, STATE OF HAWAII, 2001 WITH COMPARISONS

| Island | Total acreage in crop | | | | | | | |
|------------------------|-----------------------|-------|-------|------|-----------|------|----------|------|
| | March | | June | | September | | December | |
| | 2000 | 2001 | 2000 | 2001 | 2000 | 2001 | 2000 | 2001 |
| Hawaii..... | 2,100 | 2,270 | 1,600 | | 2,050 | | 2,040 | |
| Kauai..... | 325 | 120 | 340 | | 235 | | 185 | |
| Maui/Molokai/Oahu..... | 665 | 470 | 635 | | 470 | | 470 | |
| State..... | 3,090 | 2,860 | 2,575 | | 2,755 | | 2,695 | |
| | Total bearing acres | | | | | | | |
| Hawaii..... | 1,010 | 1,660 | 950 | | 1,190 | | 1,495 | |
| Kauai..... | 185 | 85 | 200 | | 160 | | 125 | |
| Maui/Molokai/Oahu..... | 460 | 280 | 435 | | 260 | | 255 | |
| State..... | 1,655 | 2,025 | 1,585 | | 1,610 | | 1,875 | |

FRESH PAPAYA FARM PRICE, STATE OF HAWAII, 2000-2001

| Year | Jan. | Feb. | Mar. | Apr. | May | June | July | Aug. | Sep. | Oct. | Nov. | Dec. | Average |
|-------------------|------------------------|------|------|------|------|------|------|------|------|------|------|------|---------|
| | <i>Cents per pound</i> | | | | | | | | | | | | |
| 2000 ¹ | 37.0 | 41.0 | 36.0 | 35.0 | 37.0 | 32.0 | 28.0 | 27.0 | 33.0 | 29.0 | 26.0 | 20.0 | |
| 2001 ¹ | 21.0 | 28.0 | 32.0 | 37.0 | 35.0 | | | | | | | | |

¹ Preliminary.