

# HAWAII PAPAYAS



National Agricultural Statistics Service

Hawaii Agricultural Statistics  
Hawaii Department of Agriculture  
1428 S King Street, Honolulu, HI 96814-2512  
(808) 973-9588  
FAX (808) 973-2909  
Internet Web Site <http://www.nass.usda.gov/hi>

Frequency: Monthly  
Release: May 12, 2004

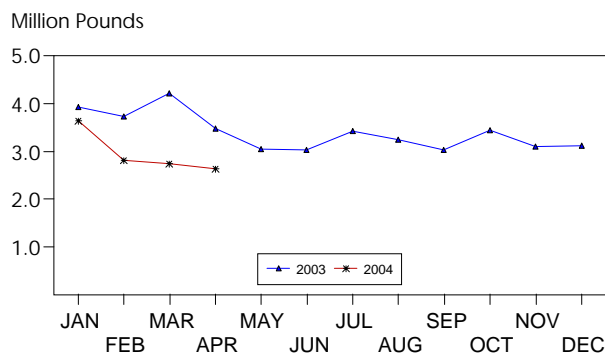
## APRIL PAPAYA UTILIZATION 24 PERCENT BELOW YEAR AGO

Hawaii fresh papaya utilization is estimated at 2.6 million pounds for April 2004, 4 percent less than March, and 24 percent lower than a year ago.

Weather conditions over the major producing areas were mostly favorable during April. Soil moisture has been adequate in non-irrigated orchards. Disease incidence remained high as a result of previous wet conditions.

Papaya growers are expected to receive an estimated 45.0 cents per pound for fresh fruit in April, 15 percent (6.0 cents) more than last month and 25 percent (9.0 cents) higher than a year ago.

## FRESH PAPAYA UTILIZATION STATE OF HAWAII, 2003-2004<sup>1</sup>



<sup>1</sup> 2004 Preliminary.

HASS

## FRESH PAPAYA UTILIZATION, STATE OF HAWAII, MONTH OF: April 2004

Island	Sales				Year ago	Year-to-date	
	Local <sup>1</sup>	Intrastate	Out-of-State	Total fresh		2003	2004
	<i>1,000 pounds</i>						
Hawaii.....	127	1,163	1,030	2,320	3,065	13,695	10,525
Kauai.....	50	0	0	50	50	210	160
Maui/Molokai/Oahu <sup>2</sup> .....	225	5	40	270	370	1,465	1,155
State.....	402	1,168	1,070	2,640	3,485	15,370	11,840

<sup>1</sup> On island of production.

<sup>2</sup> Combined to avoid disclosure of individual operations.

DONALD A. MARTIN  
Director

ARTHUR Y. OSAKI  
Research Statistician

SANDY K. NAKASONE  
Statistical Assistant

**PAPAYA ACREAGE, STATE OF HAWAII, 2004 WITH COMPARISONS**

Island	Total acreage in crop							
	March		June		September		December	
	2003	2004	2003	2004	2003	2004	2003	2004
Hawaii.....	2,015	1,900	1,925		2,165		2,000	
Kauai.....	60	50	65		45		50	
Maui/Molokai/Oahu.....	185	160	180		160		160	
State.....	2,260	2,110	2,170		2,370		2,210	
	Total bearing acres							
Hawaii.....	1,385	1,000	1,440		1,430		1,205	
Kauai.....	40	40	40		30		35	
Maui/Molokai/Oahu.....	90	125	95		105		110	
State.....	1,515	1,165	1,575		1,565		1,350	

**FRESH PAPAYA FARM PRICE, STATE OF HAWAII, 2003-2004**

Year	Jan.	Feb.	Mar.	Apr.	May	June	July	Aug.	Sep.	Oct.	Nov.	Dec.	Average
	<i>Cents per pound</i>												
2003 <sup>1</sup>	28.0	32.0	35.0	36.0	38.0	38.0	35.0	32.0	34.0	31.0	29.0	29.0	
2004 <sup>1</sup>	30.0	31.0	39.0	45.0									

<sup>1</sup>Preliminary.