

HAWAII PAPAYAS



National Agricultural Statistics Service

Hawaii Agricultural Statistics Service
 Hawaii Department of Agriculture
 1428 S King Street, Honolulu, HI 96814-2512
 (808) 973-9588
 FAX (808) 973-2909
 Internet Web Site <http://www.nass.usda.gov/hi>

Frequency: Monthly
 Release: May 13, 2003

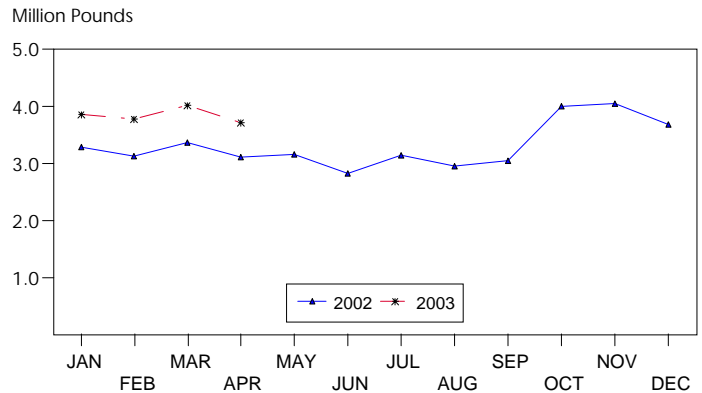
FRESH PAPAYA UTILIZATION UP 24 PERCENT FROM YEAR AGO

Hawaii fresh papaya utilization is estimated at 3.73 million pounds for April 2003. This was 7 percent lower than last month, but 24 percent higher than April 2002.

Weather conditions were variable during the month of April. Frequent showers over rainfall dependent orchards have kept soil moisture levels adequate.

Papaya growers are expected to receive an estimated 36.0 cents per pound for fresh fruit in April. This was 3 percent (1.0 cent) higher than last month, but 5 percent (2.0 cents) less than a year ago.

FRESH PAPAYA UTILIZATION STATE OF HAWAII, 2002-2003¹



¹ 2002-2003 Preliminary.

HASS

FRESH PAPAYA UTILIZATION, STATE OF HAWAII, MONTH OF: April 2003

Island	Sales				Year ago	Year-to-date	
	Local ¹	Intrastate	Out-of-State	Total fresh		2002	2003
	<i>1,000 pounds</i>						
Hawaii.....	142	1,408	1,750	3,300	2,330	10,405	13,710
Kauai.....	49	1	5	55	115	415	205
Maui/Molokai/Oahu ²	343	7	20	370	550	2,205	1,465
State.....	534	1,416	1,775	3,725	2,995	13,025	15,380

¹ On island of production.

² Combined to avoid disclosure of individual operations.

DONALD A. MARTIN
 State Agricultural Statistician

ARTHUR Y. OSAKI
 Research Statistician

SANDY K. NAKASONE
 Statistical Assistant

PAPAYA ACREAGE, STATE OF HAWAII, 2003 WITH COMPARISONS

Island	Total acreage in crop							
	March		June		September		December	
	2002	2003	2002	2003	2002	2003	2002	2003
Hawaii.....	2,200	2,015	1,920		1,925		1,925	
Kauai.....	80	55	75		60		55	
Maui/Molokai/Oahu.....	210	185	210		185		170	
State.....	2,490	2,255	2,205		2,170		2,150	
Total bearing acres								
Hawaii.....	1,700	1,600	1,490		1,385		1,465	
Kauai.....	60	40	60		40		35	
Maui/Molokai/Oahu.....	170	95	175		75		80	
State.....	1,930	1,735	1,725		1,500		1,580	

FRESH PAPAYA FARM PRICE, STATE OF HAWAII, 2002-2003

Year	Jan.	Feb.	Mar.	Apr.	May	June	July	Aug.	Sep.	Oct.	Nov.	Dec.	Average
	<i>Cents per pound</i>												
2002 ¹	34.0	35.0	34.0	38.0	42.0	40.0	35.0	34.0	30.0	27.0	26.0	26.0	
2003 ¹	28.0	32.0	35.0	36.0									

¹Preliminary.