

HAWAII PAPAYAS



National Agricultural Statistics Service

Hawaii Agricultural Statistics Service
Hawaii Department of Agriculture
Box 22159, Honolulu, HI 96823-2159
(808) 973-9588
FAX (808) 973-2909
Internet Web Site <http://www.nass.usda.gov/hi>

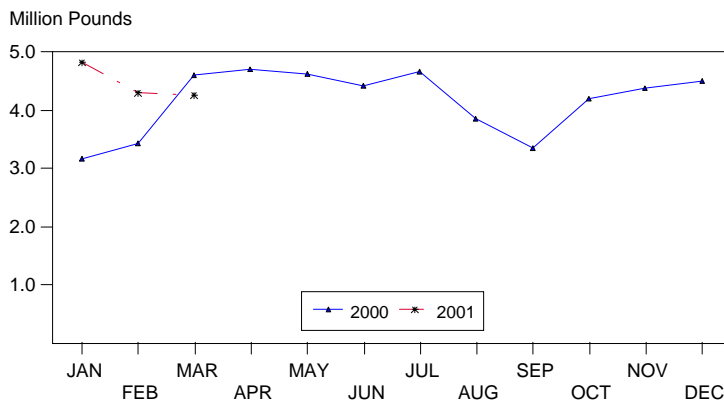
Frequency: Monthly
Release: April 11, 2001

MARCH FRESH OUTPUT PEGGED AT 4.3 MILLION POUNDS

Hawaii fresh papaya production is estimated at 4.27 million pounds for March, 1 percent lower than February and 7 percent lower than March 2000.

March weather conditions were variable with showers and sunshine over major papaya producing areas. Soil moisture in non-irrigated orchards has been adequate. Regular spraying and roguing practices have minimized phytophthora and papaya ringspot virus diseases.

FRESH PAPAYA UTILIZATION STATE OF HAWAII, 2000-2001¹



¹ 2000-2001 Preliminary.

HASS

Area in crop totaled 2,860 acres, 6 percent higher than December 2000 but 6 percent lower than a year ago. Harvested area, totaling 2,025 acres, was 8 percent more than December 2000 and 28 percent higher than last March.

Papaya growers are expected to receive and estimated 32.0 cents per pound for fresh fruit in March, 14 percent (4 cents) higher than February but 11 percent (4 cents) below last year.

FRESH PAPAYA UTILIZATION, STATE OF HAWAII, MONTH OF: March 2001

Island	Sales				Year ago	Year-to-date	
	Local ¹	Intrastate	Out-of-State	Total fresh		2000	2001
	<i>1,000 pounds</i>						
Hawaii.....	129	1,331	1,700	3,160	3,140	6,870	10,160
Kauai.....	57	28	75	160	485	1,270	490
Maui/Molokai/Oahu ²	626	4	320	950	985	3,085	2,750
State.....	812	1,363	2,095	4,270	4,610	11,225	13,400

¹ On island of production.

² Combined to avoid disclosure of individual operations.

PAPAYA ACREAGE, STATE OF HAWAII, 2001 WITH COMPARISONS

Island	Total acreage in crop							
	March		June		September		December	
	2000	2001	2000	2001	2000	2001	2000	2001
Hawaii.....	2,100	2,270	1,600		2,050		2,040	
Kauai.....	325	120	340		235		185	
Maui/Molokai/Oahu.....	665	470	635		470		470	
State.....	3,090	2,860	2,575		2,755		2,695	
	Total bearing acres							
Hawaii.....	1,010	1,660	950		1,190		1,495	
Kauai.....	185	85	200		160		125	
Maui/Molokai/Oahu.....	460	280	435		260		255	
State.....	1,655	2,025	1,585		1,610		1,875	

FRESH PAPAYA FARM PRICE, STATE OF HAWAII, 2000-2001

Year	Jan.	Feb.	Mar.	Apr.	May	June	July	Aug.	Sep.	Oct.	Nov.	Dec.	Average
	<i>Cents per pound</i>												
2000 ¹	37.0	41.0	36.0	35.0	37.0	32.0	28.0	27.0	33.0	29.0	26.0	20.0	
2001 ¹	21.0	28.0	32.0										

¹ Preliminary.