

# HAWAII PAPAYAS



National Agricultural Statistics Service

Hawaii Agricultural Statistics Service  
Hawaii Department of Agriculture  
1428 S King Street, Honolulu, HI 96814-2512  
(808) 973-9588  
FAX (808) 973-2909  
Internet Web Site <http://www.nass.usda.gov/hi>

Frequency: Monthly  
Release: March 13, 2003

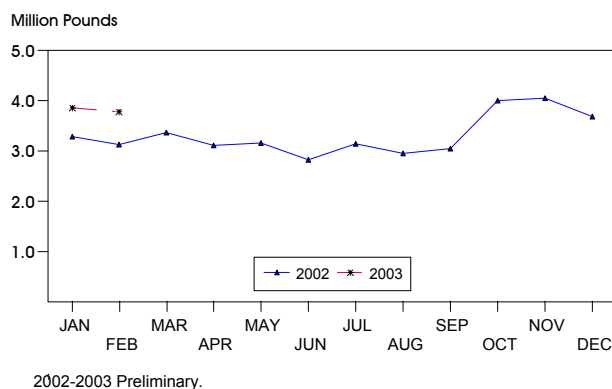
## FEBRUARY FRESH PRODUCTION DOWN 2 PERCENT

Hawaii fresh papaya utilization is estimated at 3.8 million pounds for February 2003, down 2 percent from last month, but 14 percent above last year. Year-to-date fresh sales were 15 percent more than the same 2-month period of 2002.

February weather conditions were variable. Rainfall during February relieved low soil moisture levels in non-irrigated orchards due to dry conditions in January.

Papaya growers are expected to receive an estimated 32.0 cents per pound for fresh fruit in February. This was up 14 percent (4.0 cents) from last month, but 9 percent (3.0 cents) lower than a year ago.

## FRESH PAPAYA UTILIZATION STATE OF HAWAII, 2002-2003<sup>1</sup>



HASS

## FRESH PAPAYA UTILIZATION, STATE OF HAWAII, MONTH OF: February 2003

Island	Sales				Year ago	Year-to-date	
	Local <sup>1</sup>	Intrastate	Out-of-State	Total fresh		2002	2003
	<i>1,000 pounds</i>						
Hawaii.....	104	1,256	2,000	3,360	2,670	5,365	6,810
Kauai.....	42	3	5	50	90	185	100
Maui/Molokai/Oahu <sup>2</sup> .....	344	1	20	365	550	1,105	730
State.....	490	1,260	2,025	3,775	3,310	6,655	7,640

<sup>1</sup> On island of production.

<sup>2</sup> Combined to avoid disclosure of individual operations.

DONALD A. MARTIN  
State Agricultural Statistician

ARTHUR Y. OSAKI  
Research Statistician

SANDY K. NAKASONE  
Statistical Assistant

**PAPAYA ACREAGE, STATE OF HAWAII, 2002 WITH COMPARISONS**

Island	Total acreage in crop							
	March		June		September		December	
	2001	2002	2001	2002	2001	2002	2001	2002
Hawaii.....	2,270	2,200	3,000	1,920	2,360	1,925	2,275	1,850
Kauai.....	120	75	105	75	75	60	80	55
Maui/Molokai/Oahu.....	470	210	430	210	255	185	220	170
State.....	2,860	2,485	3,535	2,205	2,690	2,170	2,575	2,075
	Total bearing acres							
Hawaii.....	1,660	1,700	1,670	1,490	1,675	1,385	1,620	1,385
Kauai.....	85	60	80	60	55	40	60	35
Maui/Molokai/Oahu.....	280	175	285	180	210	85	145	75
State.....	2,025	1,935	2,035	1,730	1,940	1,510	1,825	1,495

**FRESH PAPAYA FARM PRICE, STATE OF HAWAII, 2002-2003**

Year	Jan.	Feb.	Mar.	Apr.	May	June	July	Aug.	Sep.	Oct.	Nov.	Dec.	Average
	<i>Cents per pound</i>												
2002 <sup>1</sup>	34.0	35.0	34.0	38.0	42.0	40.0	35.0	34.0	30.0	27.0	26.0	26.0	
2003 <sup>1</sup>	28.0	32.0											

<sup>1</sup>Preliminary.