

# HAWAII PAPAYAS



National Agricultural Statistics Service

Hawaii Agricultural Statistics Service  
Hawaii Department of Agriculture  
Box 22159, Honolulu, HI 96823-2159  
(808) 973-9588  
FAX (808) 973-2909  
Internet Web Site <http://www.nass.usda.gov/hi>

Frequency: Monthly  
Release: March 14, 2002

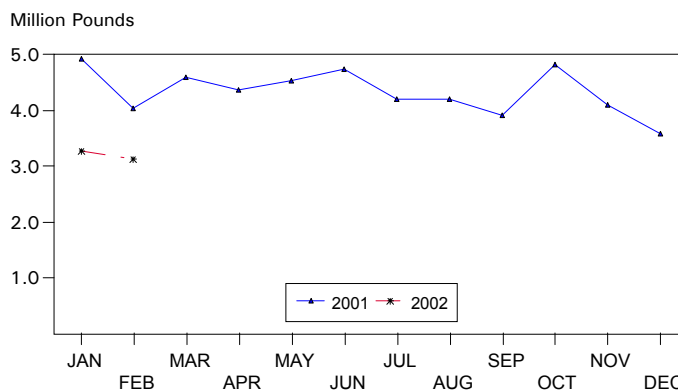
## FEBRUARY FRESH OUTPUT 5 PERCENT LOWER

Hawaii Fresh papaya production is estimated at 3.14 million pounds for February 2002, 5 percent less than last month and 22 percent lower than a year ago. Year-to-date fresh output trails the same 2-month period of 2001 by 28 percent.

Weather conditions for February were variable with sunshine and sometimes heavy rain. Cool temperatures have slowed fruit maturation.

Papaya growers are expected to receive an estimated 35.0 cents per pound for fresh fruit in February, 3 percent (1.0 cent) higher than last month, and 25 percent (7.0 cents) higher than a year ago.

## FRESH PAPAYA UTILIZATION STATE OF HAWAII, 2001-2002<sup>1</sup>



<sup>1</sup> 2001-2002 Preliminary.

HASS

## FRESH PAPAYA UTILIZATION, STATE OF HAWAII, MONTH OF: February 2002

Island	Sales				Year ago	Year-to-date	
	Local <sup>1</sup>	Intrastate	Out-of-State	Total fresh		2001	2002
	<i>1,000 pounds</i>						
Hawaii.....	179	916	1,400	2,495	2,960	6,825	5,135
Kauai.....	24	56	10	90	180	345	185
Maui/Molokai/Oahu <sup>2</sup> .....	526	4	20	550	900	1,800	1,100
State.....	729	976	1,430	3,135	4,040	8,970	6,420

<sup>1</sup> On island of production.

<sup>2</sup> Combined to avoid disclosure of individual operations.

**PAPAYA ACREAGE, STATE OF HAWAII, 2001 WITH COMPARISONS**

Island	Total acreage in crop							
	March		June		September		December	
	2000	2001	2000	2001	2000	2001	2000	2001
Hawaii.....	2,100	2,270	1,600	3,000	2,050	2,360	2,040	2,275
Kauai.....	325	120	340	105	235	75	185	80
Maui/Molokai/Oahu.....	665	470	645	430	470	255	470	220
State.....	3,090	2,860	2,585	3,535	2,755	2,690	2,695	2,575
	Total bearing acres							
Hawaii.....	1,010	1,660	950	1,670	1,300	1,675	1,495	1,625
Kauai.....	185	85	200	80	160	50	125	60
Maui/Molokai/Oahu.....	460	280	435	285	265	200	255	150
State.....	1,655	2,025	1,585	2,035	1,725	1,925	1,875	1,835

**FRESH PAPAYA FARM PRICE, STATE OF HAWAII, 2001-2002**

Year	Jan.	Feb.	Mar.	Apr.	May	June	July	Aug.	Sep.	Oct.	Nov.	Dec.	Average
	<i>Cents per pound</i>												
2001 <sup>1</sup>	21.0	28.0	32.0	37.0	35.0	32.0	33.0	30.0	27.0	25.0	25.0	26.0	
2002 <sup>1</sup>	34.0	35.0											

<sup>1</sup>Preliminary.