



March 2011

## Coffee: Preliminary Numbers for 2010/11 Show Marketings and Price Lower than Last Year

In cooperation with



### Inside this issue:

Coffee .....	1
Chicken & Eggs .....	2-3
Honey .....	4-5
Labor .....	6
Taro .....	7

The preliminary farm revenue for coffee is estimated at \$25.7 million (parchment equivalent basis) for the 2010/11 season, 18 percent lower than the 2009/10 season. Smaller marketing and lower average farm price contributed toward the decline. Total acreage and harvested acreage remained unchanged at 8,000 and 6,300, respectively. Yields averaged 1,250 pounds per acre, down 130 pounds from the previous season. The Statewide farm price for coffee averaged \$3.25 per pound (parchment equivalent basis) for the 2010/11 season, 10 percent below the 2009/10 season of \$3.60 per pound. A final survey will be conducted in June to determine the overall season. Dry weather created drought conditions hampering coffee production in the Kona area of the Big Island.

The Coffee Berry Borer was confirmed on the Big Island on September 8, 2010 mainly affecting the Kona area. Quarantine zones were put into effect to limit the spread of the pest on December 2, 2010. Measures are being implemented to control the pest. ■

### COFFEE: Number of Farms, Acreage, Yield, Marketings, Price, and Value, State of Hawaii, 2006/07 – 2010/11

Crop year <sup>1</sup>	Farms	Acreage		Yield <sup>2</sup>	Marketings <sup>3</sup>	Farm price <sup>4</sup>	Value of sales	Green production
		In crop	Harvested					
	Number	Acres		1,000 pounds		Cents per pound	\$1,000	1,000 pounds
2006/07	820	8,200	6,300	1.2	7,400	430.0	31,820	5,900
2007/08	830	7,800	6,400	1.2	7,500	425.0	31,875	6,000
2008/09	830	7,800	6,300	1.4	8,700	340.0	29,580	7,000
2009/10	830	8,000	6,300	1.4	8,700	360.0	31,320	7,000
<b>2010/11 <sup>5</sup></b>	<b>830</b>	<b>8,000</b>	<b>6,300</b>	<b>1.3</b>	<b>7,900</b>	<b>325.0</b>	<b>25,675</b>	<b>6,300</b>

<sup>1</sup> Coffee harvesting occurs throughout the year in Hawaii. The main harvest normally begins in late summer and extends to the early part of the following year. <sup>2</sup> Average yields based on parchment equivalent marketings and harvested acreage. <sup>3</sup> Expressed in parchment equivalent pounds. Coffee marketed in cherry form was converted to an equivalent parchment weight and added to parchment marketings. <sup>4</sup> Represents an average farm price for parchment equivalent sales. Obtained by dividing farm revenues from the sale of cherry and parchment coffee by total marketings (parchment equivalent basis). <sup>5</sup> Preliminary.

# Chickens and Eggs:

## ALL LAYERS: Average Number on Hand During the Month, State of Hawaii, 2009-2010

	Dec <sup>1</sup>	Jan	Feb	Mar	Apr	May	Jun	Jul	Aug	Sep	Oct	Nov
<i>1,000 layers</i>												
2009 <sup>2</sup>	338	339	334	337	339	333	325	327	326	315	319	323
<b>2010</b>	<b>305</b>	<b>299</b>	<b>305</b>	<b>315</b>	<b>332</b>	<b>324</b>	<b>315</b>	<b>330</b>	<b>349</b>	<b>348</b>	<b>347</b>	<b>346</b>

<sup>1</sup> December preceding year. <sup>2</sup> Revised.

## EGGS: Table Egg Production, State of Hawaii, 2009-2010

Year	Dec <sup>1</sup>	Jan	Feb	Mar	Apr	May	Jun	Jul	Aug	Sep	Oct	Nov	Total
<i>Million eggs</i>													
2009 <sup>2</sup>	6.0	6.0	5.2	5.9	5.9	6.1	5.7	6.0	5.9	5.6	5.7	5.5	69.5
<b>2010</b>	<b>5.4</b>	<b>5.5</b>	<b>5.2</b>	<b>5.9</b>	<b>6.0</b>	<b>6.1</b>	<b>5.6</b>	<b>5.9</b>	<b>6.3</b>	<b>5.9</b>	<b>5.8</b>	<b>5.9</b>	<b>69.5</b>

<sup>1</sup> December preceding year. <sup>2</sup> Revised.

## EGGS: Number Layed Per 100 for All Layers During the Month, State of Hawaii, 2009-2010

	Dec <sup>1</sup>	Jan	Feb	Mar	Apr	May	Jun	Jul	Aug	Sep	Oct	Nov
<i>Number</i>												
2009 <sup>2</sup>	1,775	1,770	1,557	1,751	1,740	1,832	1,754	1,835	1,810	1,778	1,787	1,703
<b>2010</b>	<b>1,770</b>	<b>1,839</b>	<b>1,705</b>	<b>1,873</b>	<b>1,807</b>	<b>1,883</b>	<b>1,778</b>	<b>1,788</b>	<b>1,805</b>	<b>1,695</b>	<b>1,671</b>	1,705

<sup>1</sup> December preceding year. <sup>2</sup> Revised.

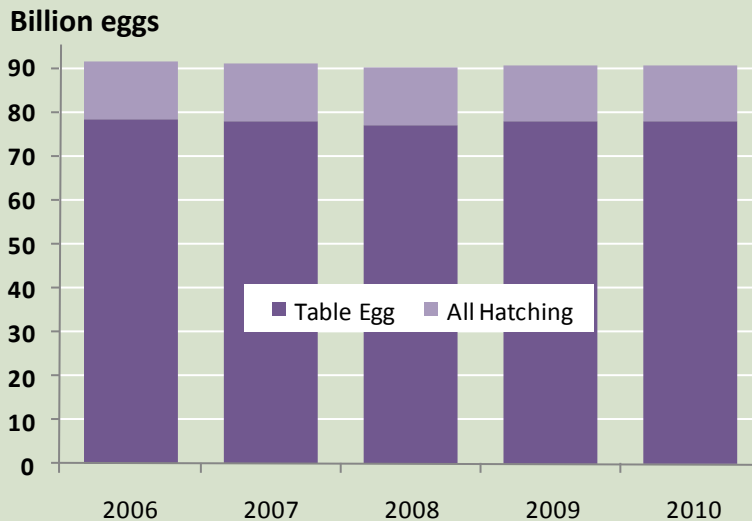
### United States Average Number of Layers Up 1 Percent

Layer numbers during 2010 averaged 340 million, down 1 percent from the year earlier. The annual average production per layer on hand in 2010 was 269 eggs, up slightly from 2009.

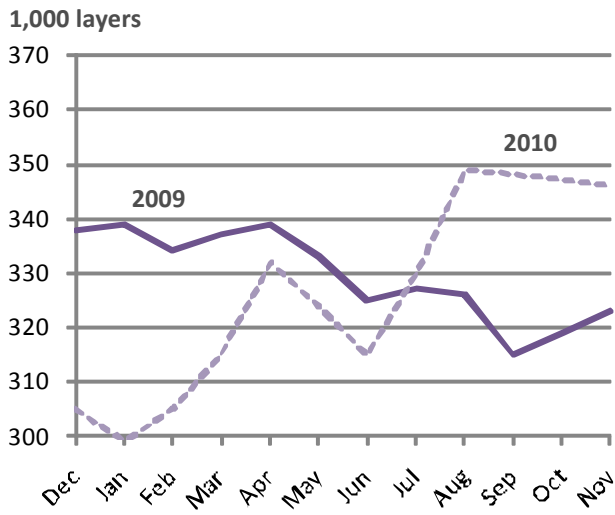
### United States Egg Production Up 1 Percent

Egg production during the year ending November 30, 2010 totaled 91.4 billion eggs, up 1 percent from 2009. Table egg production, at 78.5 billion eggs, was up 1 percent from the previous year. Hatching egg production, at 12.9 billion eggs, was up 1 percent from 2009.

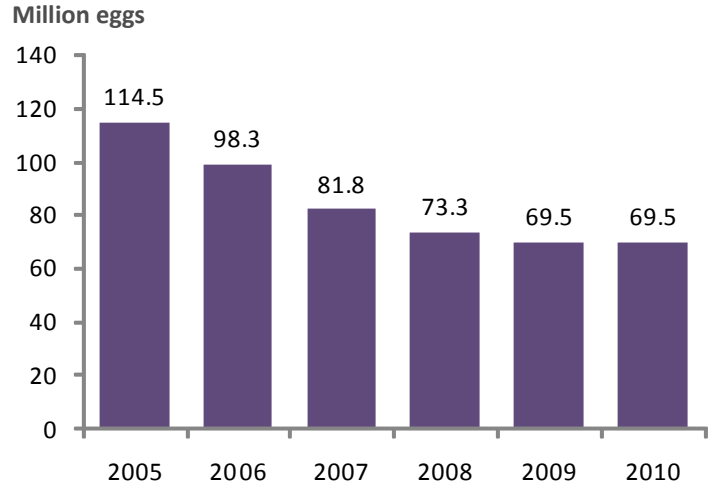
EGGS: Production by Type, United States, 2006-2010



### ALL LAYERS: Monthly Average Number on Hand, State of Hawaii, 2009-2010



### EGGS: Production, State of Hawaii, 2004-2009



## Visit us online!



All our publications are available online at [www.nass.usda.gov/hi](http://www.nass.usda.gov/hi).  
You may also receive our publications, as well as national-level and other state agricultural publications, free of charge and delivered directly to your email.  
Go to [www.nass.usda.gov](http://www.nass.usda.gov). Under the words "Receive reports by Email" located toward the right bottom of the page, click on either the "National" or "State" link and follow the instructions on the screen.



## Honey: 2010 Production Falls 19 Percent

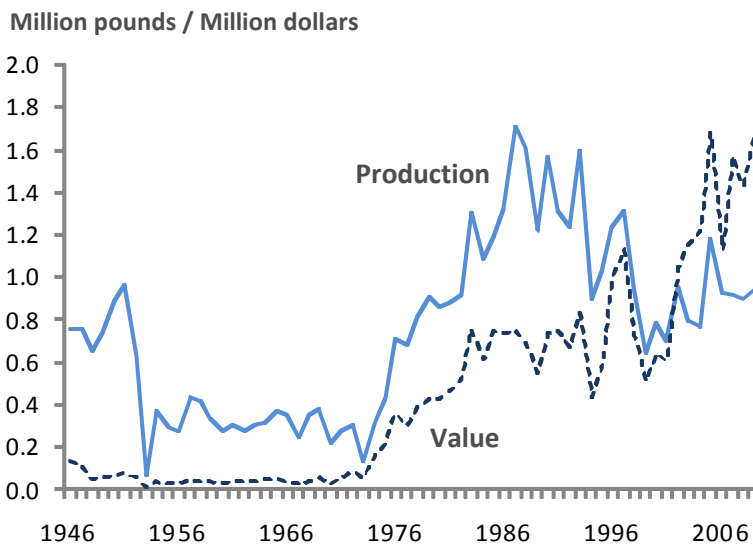
Hawaii honey production is estimated at 770,000 pounds, down 19 percent from 2009, according to the Hawaii Field Office of the National Agricultural Statistics Service. The number of honey producing colonies totaled 10,000, unchanged from the previous year. Honey yield per colony averaged 77 pounds. Honey producers received an average \$2.27 per pound in 2010, which was 29 percent greater than the revised 2009 price. Farm value totaled \$1.7 million, 5 percent greater than last year's revised value. Beeswax value totaled \$35,000, up 9 percent from last year's revised value. The average price for beeswax was \$3.20 a pound, a 2 percent increase from 2009.

Since 2007 the varroa mite has caused problems among farmers and beekeepers alike. While formic acid has been certified as an organic product for mite control, beekeepers suffered a major setback this year with the emergence of the small hive beetle (SHB). The SHB was detected on the Big Island in April 2010 and then on Oahu in December 2010. This beetle is especially devastating because it not only weakens the hive, but also can directly affect honey production. The SHB infestation occurs predominantly in weakened hives, such as those that have already been affected by the varroa

### **Record High U.S. Honey Prices**

Honey prices increased to a record high during 2010 to 160.3 cents per pound, up 9 percent from 147.3 cents per pound in 2009. United States and State level prices reflect the portions of honey sold through cooperatives, private, and retail channels. Prices for each color class are derived by weighting the quantities sold for each marketing channel. Prices for the 2009 crop reflect honey sold in 2009 and 2010. Some 2009 crop honey was sold in 2010, which caused some revisions to the 2009 crop prices.

### **HONEY: Production and Value, State of Hawaii, 1946-2010**



mite. The Hawaii Department of Agriculture's Plant Pest Control Branch has hired an apiary specialist in hopes to help beekeepers overcome the difficulties in managing honeybee pests. ■

### **U.S. Honey Production Up 20 Percent**

Honey production in 2010 from producers with five or more colonies totaled 176 million pounds, up 20 percent from 2009. There were 2.68 million colonies producing honey in 2010, up 7 percent from 2009. Yield per colony averaged 65.5 pounds, up 12 percent from the 58.6 pounds in 2009. Colonies which produced honey in more than one State were counted in each State where the honey was produced. Therefore, at the United States level yield per colony may be understated, but total production would not be impacted. Colonies were not included if honey was not harvested. Producer honey stocks were 45.3 million pounds on December 15, 2010, up 21 percent from a year earlier. Stocks held by producers exclude those held under the commodity loan program.

**Honey: Number of Colonies, Yield, Production, Stocks, Price, and Value,  
by State and United States, 2010 <sup>1</sup>**

State	Honey Producing Colonies <sup>2</sup>	Yield per Colony	Production	Stocks Dec 15 <sup>3</sup>	Average Price per Pound <sup>4</sup>	Value of Production <sup>5</sup>
	<i>1,000</i>	<i>Pounds</i>	<i>1,000 pounds</i>	<i>1,000 pounds</i>	<i>Cents</i>	<i>1,000 dollars</i>
AL	9	54	486	73	222	1,079
AZ	24	77	1,848	665	143	2,643
AR	25	60	1,500	360	147	2,205
CA	410	67	27,470	6,318	156	42,853
CO	34	56	1,904	533	150	2,856
FL	200	69	13,800	1,794	157	21,666
GA	55	46	2,530	152	167	4,225
<b>HI</b>	<b>10</b>	<b>77</b>	<b>770</b>	<b>239</b>	<b>227</b>	<b>1,748</b>
ID	98	27	2,646	1,191	150	3,969
IL	9	41	369	92	305	1,125
IN	10	43	430	151	226	972
IA	27	49	1,323	463	189	2,500
KS	9	52	468	103	229	1,072
KY	5	67	335	67	264	884
LA	21	80	1,680	269	148	2,486
ME	6	41	246	39	211	519
MI	70	58	4,060	1,502	164	6,658
MN	126	66	8,316	1,746	154	12,807
MS	16	98	1,568	78	147	2,305
MO	11	52	572	92	180	1,030
MT	157	74	11,618	2,905	155	18,008
NE	44	55	2,420	1,041	149	3,606
NJ	13	35	455	73	175	796
NM	7	66	462	157	158	730
NY	47	64	3,008	1,173	178	5,354
NC	13	46	598	138	273	1,633
ND	510	91	46,410	12,995	151	70,079
OH	17	62	1,054	327	223	2,350
OR	59	39	2,301	874	162	3,728
PA	30	37	1,110	377	205	2,276
SD	265	59	15,635	4,847	154	24,078
TN	8	63	504	106	245	1,235
TX	100	72	7,200	792	153	11,016
UT	26	30	780	195	152	1,186
VT	4	65	260	73	221	575
VA	5	37	185	37	331	612
WA	71	37	2,627	1,077	152	3,993
WV	5	38	190	38	239	454
WI	68	64	4,352	1,654	167	7,268
WY	34	36	1,224	282	160	1,958
Other States <sup>6,7</sup>	26	46	1,190	219	256	3,046
U.S. <sup>7,8</sup>	2,684	65.5	175,904	45,307	160.3	281,974

<sup>1</sup> For producers with 5 or more colonies. Colonies which produced honey in more than one State were counted in each State. <sup>2</sup> Honey producing colonies are the maximum number of colonies from which honey was taken during the year. It is possible to take honey from colonies which did not survive the entire year. <sup>3</sup> Stocks held by producers. <sup>4</sup> Average price per pound based on expanded sales. <sup>5</sup> Value of production is equal to production multiplied by average price per pound. <sup>6</sup> AK, CT, DE, MD, MA, NV, NH, OK, RI, and SC not published separately to avoid disclosing data for individual operations. <sup>7</sup> Due to rounding, total colonies multiplied by total yield may not exactly equal production. <sup>8</sup> United States value of production will not equal summation of States.

## Labor: Hired Workers Up from Last Quarter

Hawaii's hired agricultural workforce totaled 6,900 workers during the January 9-15, 2011 survey week, up 5 percent from October's survey week estimate, and 10 percent from January of last year. Number of hired sugarcane and pineapple workers increased by 50, while all other hired workers increased by 250 people from October.

Hawaii's total farm workforce was estimated at 12,300 during the survey week of January 9-15, 2011. This was an increase of 7 percent from October 2010 and a 10-percent increase from January 2010.

The number of self-employed operators totaled 4,500 during January 2011's survey week, up 22 percent from the previous survey period in October, and up 18 percent from January a year ago.

### Average Wage Rate Increases

The average wage paid to all hired workers during the survey week of January 9-15, 2011 was estimated at \$13.51 per hour, down 6 percent from October, and down 4 percent from January a year ago.

Hawaii farms having 1 to 9 hired workers paid an average of \$12.42 per hour; up 4 percent compared to October's average wage and up 6 percent from last January's revised average wage. The combined average wage for field and livestock workers on operations with 1 to 9 hired workers was \$11.13 an hour. This was up 1 percent from October 2010, and 5 percent from the January 2010 wage. ■

### FARM LABOR: Wage Rates for Type of Workers and All Hired Workers, State of Hawaii and United States, January 9-15, 2011 with Comparison <sup>1</sup>

Quarter	All Hired Farm Workers			Field and Livestock Workers		
	Hawaii		United States <sup>2</sup>	Hawaii		United States <sup>2</sup>
	Farms With 1-9 Workers	All Farms		Farms With 1-9 Workers	All Farms	
	<i>Dollars per hour</i>					
Jan 10-16, 2010	11.76	14.14	11.08	10.55	11.82	10.18
<b>Jan 9-15, 2011</b>	<b>12.42</b>	<b>13.51</b>	<b>11.29</b>	<b>11.13</b>	<b>11.48</b>	<b>10.35</b>

<sup>1</sup> Excludes agricultural service workers. <sup>2</sup> Excludes Alaska.

### FARM LABOR: Number of Workers on Farms, Quarterly and Annual Averages, State of Hawaii, 2010 and 2011 <sup>1</sup>

Quarter	Total Farm Workforce	Number of Farm Workers by Type				
		Self-employed Farm Operators	Unpaid Workers <sup>2</sup>	Hired Workers		
				Total	Sugarcane and Pineapple <sup>3</sup>	Other
<b>2010</b>						
January	11,200	3,800	1,100	6,300	750	5,550
April	10,800	3,600	900	6,300	750	5,550
July	11,100	4,000	900	6,200	800	5,400
October	11,500	3,700	1,200	6,600	800	5,800
Annual average	11,200	3,800	1,000	6,400	800	5,600
<b>2011</b>						
<b>January</b>	<b>12,300</b>	<b>4,500</b>	<b>900</b>	<b>6,900</b>	<b>850</b>	<b>6,050</b>

<sup>1</sup> Estimates for each quarter are based on a survey week that includes the 12th day of the month. Annual averages are based on quarterly estimates.

<sup>2</sup> Unpaid workers include family members and others working 15 or more hours per week. <sup>3</sup> Data combined to avoid disclosure of individual



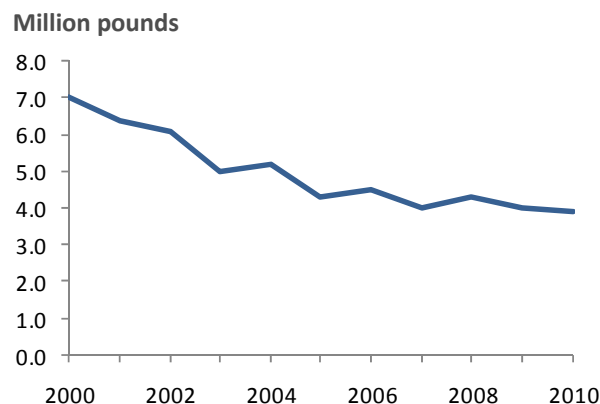
## Taro: Production Down 3 Percent from Last Year

Hawaii taro production for 2010 is estimated at 3.9 million pounds, down 3 percent from 2009's estimate of 4.0 million pounds. The farm price increased 6 percent to an average of 64.5 cents per pound, while the value of sales increased 3 percent from 2009 to \$2.5 million.

Taro for processing totaled 3.8 million pounds in 2010, down 3 percent from 2009. The bulk of all processed taro, and taro in general, is made into poi. Other processed uses for taro include a traditional Hawaiian dessert called *Kulolo* (a mixture of taro and coconut cream and/or shredded coconut meat) and chips.

Taro for poi production increased 9 percent for the fourth quarter of 2010 compared to the third quarter. Taro millers used 335,000 pounds of taro in October, 3 percent lower than September. The amount of taro

**TARO: Production, State of Hawaii, 2000-2010**



used for poi millings then rose 6 percent to 355,000 pounds in November. Taro for poi millings increased again by 10 percent to 390,000 pounds in December. ■

### TARO: Number of Farms, Acreage, Marketing, Price, and Value, 2006-2010

Year	Farms	Acreage in crop <sup>1</sup>			Marketings			Farm price			Value of sales
		Poi taro	Chinese taro	Total	Fresh	Processed	Total	Poi taro	Chinese taro	All	
	<i>Number</i>	<i>Acres</i>			<i>1,000 pounds</i>			<i>Cents per pound</i>			<i>1,000 dollars</i>
2006	105	360	20	380	100	4,400	4,500	56.8	65.5	57.0	2,565
2007	105	355	25	380	100	3,900	4,000	59.2	50.5	59.0	2,360
2008	105	370	20	390	100	4,200	4,300	62.0	61.5	62.0	2,666
2009	110	415	30	445	100	3,900	4,000	60.9	62.0	61.0	2,440
<b>2010</b>	<b>115</b>	<b>440</b>	<b>35</b>	<b>475</b>	<b>100</b>	<b>3,800</b>	<b>3,900</b>	<b>63.8</b>	<b>86.5</b>	<b>64.5</b>	<b>2,516</b>

<sup>1</sup> Survey conducted in November of each year. Does not include acreage used primarily for leaf production.

### TARO: Poi Millings by Months, State of Hawaii, 5-year Average, 2009 and 2010

Year	Jan	Feb	Mar	Apr	May	Jun	Jul	Aug	Sep	Oct	Nov	Dec	Total
<i>1,000 pounds</i>													
5-year average <sup>1</sup>	339	317	326	299	306	309	346	376	359	389	357	397	4,120
2009.....	315	285	295	305	285	325	320	320	325	370	355	400	3,900
<b>2010.....</b>	<b>285</b>	<b>275</b>	<b>325</b>	<b>285</b>	<b>265</b>	<b>295</b>	<b>310</b>	<b>335</b>	<b>345</b>	<b>335</b>	<b>355</b>	<b>390</b>	<b>3,800</b>
<i>Percent</i>													
Percent Changes:													
2010/5-year .....	84	87	100	95	87	95	90	89	96	86	99	98	92
2010/2009.....	90	96	110	93	93	91	97	105	106	91	100	98	97

<sup>1</sup> Years: 2005-2009.