

HAWAII CATTLE

January 1

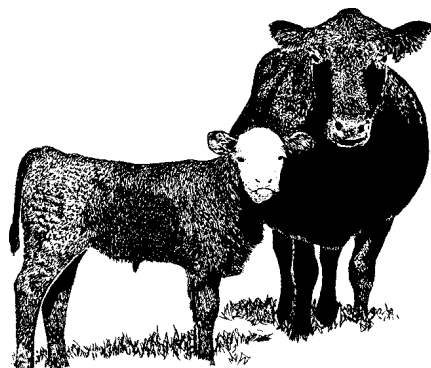


Hawaii Department of Agriculture
Agricultural Development Division

U.S. Department of Agriculture

1428 S King Street
Honolulu, Hi 96814-2512

Phone (808) 973-9588
FAX (808) 973-2909



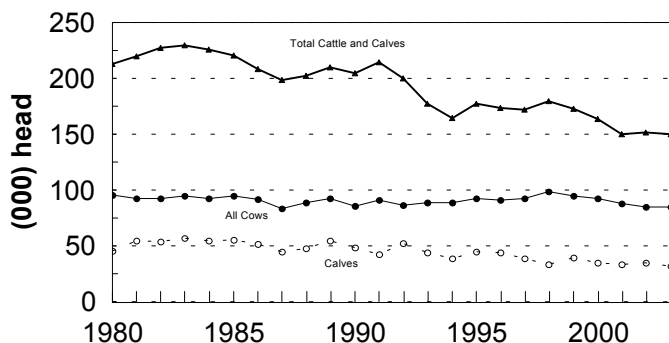
Frequency: Annual

Release: February 13, 2003

INVENTORY DECLINES 1 PERCENT FROM YEAR AGO

According to the *Hawaii Agricultural Statistics Service*, the total number of cattle and calves on Hawaii's ranches on January 1, 2003 was **150,000** head, 2,000 below a year earlier and unchanged from two years ago. Although the condition of many of the grazing areas in the State showed improvements from late 2001 into 2002, most ranchers had already reduced the size of their herds due of the prolonged drought which occurred for several years prior to 2001.

JANUARY 1 CATTLE INVENTORY
State of Hawaii, 1980-2003

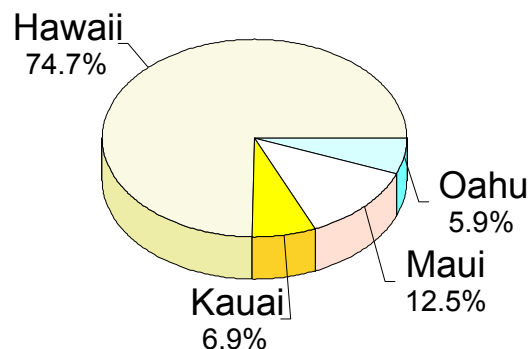


HASS (2/03)

Highlights

- Beef cows - 79,000 head - up 1,000
- Milk cows - 6,000 head - down 1,000
- Heifers 500 pounds and over
 - Beef replacements - 12,000 head - up 2,000
 - Milk replacements - 3,000 head - unchanged
 - Other heifers - 6,000 head - down 1,000
- Steers - 7,000 head - down 1,000
- Bulls - 5,000 head - up 1,000
- Calves - 32,000 head - down 3,000

CATTLE INVENTORY BY ISLANDS January 1, 2003



HASS (2/03)

Inventory By County

The island of Hawaii, with nearly 75 percent of the State's inventory, recorded a 1,600 head decline from a year earlier to 112,000 head on January 1, 2003. Maui County (Maui/Molokai/Lanai) with a 1,500 head decline in inventory dropped to 18,800 head. Honolulu county registered a 400 head increase in inventory from a year ago to 8,800 head, while Kauai County showed an increase of 700 head to a total of 10,400 head.

Total Marketings Unchanged

Cattle and calf marketings totaled 59,000 head during 2002, unchanged from the previous year.

The bulk of the marketings continued to be exports of cattle and calves to the mainland west coast. Out-of-State shipments totaled 42,000 head during 2002, a decline of 4,000 from the previous year.

Calf Crop Lower

The 2002 calf crop for Hawaii is estimated at 63,000 head, 3,000 and 6,000 below a year ago and two years ago, respectively.

CATTLE AND CALVES: January 1 inventory by sex classes and weight, by island, 1999-2003

Year	All cattle and calves	All cows and heifers that have calved			Heifers 500 pounds and over				Steers 500 lbs. and over	Bulls 500 lbs. and over	Steers, heifers, and bulls under 500 lbs.
		Total	Beef cows	Milk cows	Total	Beef cow replacements	Milk cow replacements	Other			
1,000 head											
STATE ¹											
1999	173	95	86	9	25	16	4	5	8	5	40
2000	164	93	84	9	24	14	4	6	8	4	35
2001	150	88	81	7	18	10	3	5	6	4	34
2002	152	85	78	7	20	10	3	7	8	4	35
2003	150	85	79	6	21	12	3	6	7	5	32
Hawaii											
1999	119.8	65.8	63.9	1.9	16.1	11.8	1.1	3.2	5.1	3.5	29.3
2000	114.4	65.4	63.4	2.0	16.5	10.9	1.4	4.2	5.2	3.0	24.3
2001	110.1	66.6	64.0	2.6	12.5	7.3	1.9	3.3	3.6	3.4	24.0
2002	113.6	64.6	61.6	3.0	13.9	8.1	1.7	4.1	4.4	3.4	27.3
2003	112.0	63.9	60.8	3.1	14.6	9.4	1.6	3.6	4.3	3.9	25.3
Honolulu											
1999	13.4	7.2	2.0	5.2	3.2	.8	2.1	.3	.3	.2	2.5
2000	12.8	7.7	2.1	5.6	2.2	.4	1.6	.2	.2	.2	2.5
2001	9.4	5.5	.8	4.7	1.7	.2	1.3	.2	.1	.1	2.0
2002	8.4	4.9	1.2	3.7	1.6	.2	1.2	.2	.4	.1	1.4
2003	8.8	5.3	2.0	3.3	1.6	.3	1.0	.3	.4	.2	1.3
Kauai											
1999	10.6	4.9	4.2	.7	1.8	.8	.3	.7	1.1	.3	2.5
2000	10.5	4.9	4.1	.8	1.8	.7	.2	.9	1.1	.3	2.4
2001	10.8	5.0	5.0	*	1.7	.9	0	.8	1.1	.3	2.7
2002	9.7	4.5	4.5	*	1.5	1.0	0	.5	1.2	.3	2.2
2003	10.4	5.4	5.4	*	2.0	1.2	0	.8	1.0	.4	1.6
Maui											
1999	29.2	17.0	16.1	.9	4.2	2.4	.6	1.2	1.6	.7	5.7
2000	26.3	14.9	14.8	.1	3.5	2.1	.4	1.0	1.3	.5	6.1
2001	19.7	11.1	11.1	*	2.1	1.3	.2	.6	1.1	.5	4.9
2002	20.3	11.0	11.0	*	3.0	1.1	0	1.9	1.8	.5	4.0
2003	18.8	10.6	10.6	*	2.5	1.4	0	1.1	1.0	.6	4.1

* = Less than 50. ¹ State totals may not add due to rounding.

CATTLE AND CALVES: Inventory and disposition, State of Hawaii. 1998-2002

Year	Inventory beginning January 1	Calf crop	Inshipments	Marketings	Farm slaughter	Deaths	Inventory January 1 following year
				1,000 head			
1998	180	73	*	67	1	12	173
1999	173	73	*	74	1	7	164
2000	164	69	*	73	1	9	150
2001	150	66	*	59	*	5	152
2002	152	63	*	59	1	5	150

* = Less than 500.

CATTLE AND CALVES: Exports, 1998-2002

Year	Total Export	Cattle ¹	Calves ²	Steers	Heifers
			1,000 head		
1998	44	4	40	25	19
1999	57	4	53	33	24
2000	51	5	46	30	21
2001	46	4	42	27	19
2002	42	4	38	25	17

¹ Over 500 pounds. ² Under 500 pounds.

U.S. INVENTORY SECTION

U.S. INVENTORY DOWN 1 PERCENT

All cattle and calves in the United States as of January 1, 2003, totaled 96.1 million head, 1 percent below the 96.7 million on January 1, 2002 and 1 percent below the 97.3 million two years ago.

All cows and heifers that have calved, at 42.1 million, were down slightly from the 42.2 million on January 1, 2002 and down 1 percent from the 42.6 million two years ago.

Cattle and Calves: Number by Class and Calf Crop, United States, January 1, 2000-2003

Class	2001	2002	2003	2003 as % of 2002
		1,000 head		percent
Cattle and Calves	97,277	96,704	96,106	99
Cows and Heifers That Have Calved	42,580	42,229	42,099	100
Beef Cows	33,397	33,118	32,947	99
Milk Cows	9,183	9,112	9,152	100
Heifers 500 Pounds and Over	19,776	19,678	19,601	100
For Beef Cow Replacement	5,588	5,561	5,608	101
For Milk Cow Replacement	4,057	4,060	4,104	101
Other Heifers	10,131	10,057	9,890	98
Steers 500 Pounds and Over	16,441	16,790	16,590	99
Bulls 500 Pounds and Over	2,274	2,244	2,253	100
Calves Under 500 Pounds	16,206	15,763	15,563	99
	2000	2001	2002	2002 as % of 2001
Calf Crop	38,631	38,280	38,193	100

SOURCE: *Cattle*, January 31, 2003, National Agricultural Statistics Service (NASS), Agricultural Statistics Board, U.S. Department of Agriculture.

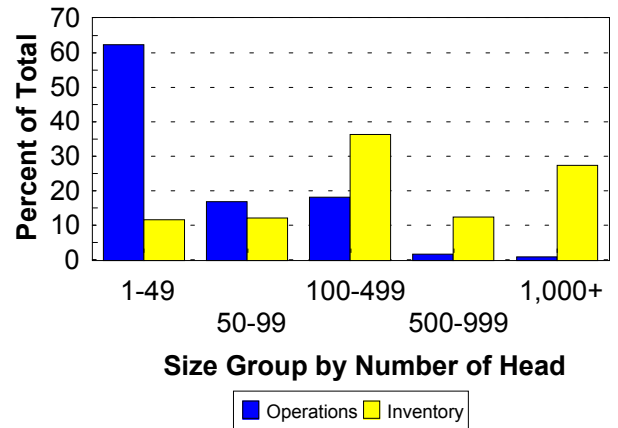
U.S. CALF CROP DOWN SLIGHTLY

The 2002 calf crop was estimated at 38.2 million head, down slightly from 2001 and down 1 percent from 2000. Calves born during the first half of the year are estimated at 27.9 million, down 1 percent from 2001 and down 2 percent from 2000.

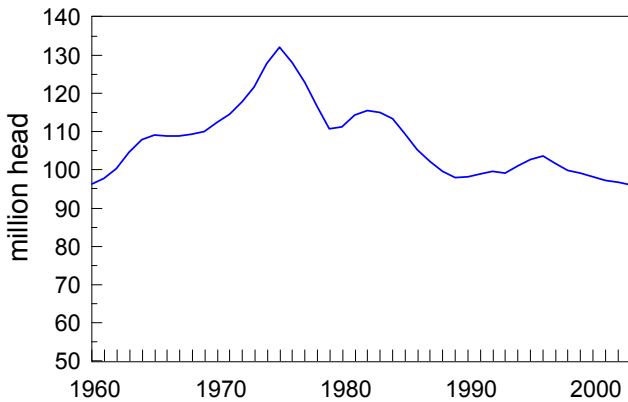
U.S. CATTLE OPERATIONS DOWN 2 PERCENT

The number of operations with cattle totaled 1.03 million during 2002, down 2 percent from 2001 and 4 percent below 2000. Beef cow operations in 2002 were down 1 percent from 2001 and 3 percent below 2000.

U.S. Size Group Comparison
Cattle Operations vs Cattle Inventory by Percent



January 1, U.S. Cattle Inventory

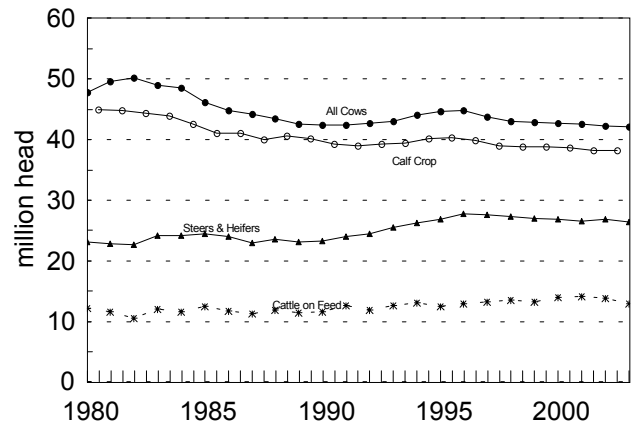


HASS (2/03)

DONALD A. MARTIN
State Agricultural Statistician

STEVEN P GUNN
Deputy State Agricultural Statistician

U.S. Cattle
Comparison by category, 1980 - 2003



NILS K. MORITA
Research Statistician