



United States Department of Agriculture  
National Agricultural Statistics Service  
**Georgia Crop Progress  
and Condition Report**



Cooperating with the Georgia Department of Agriculture and the Cooperative Extension Service  
Southern Regional Field Office · 355 East Hancock Avenue, Suite 100 · Athens, GA 30601 · (800) 253-4419  
[www.nass.usda.gov](http://www.nass.usda.gov)

This report contains data collected each week from respondents across the state whose occupations provide them opportunities to discuss agricultural production with farmers in their counties as well as to make visual observations. We thank all who have contributed to this report.

September 3, 2024

Media Contact: Anthony Prillaman

**General**

According to the National Agricultural Statistics Service in Georgia, there were 6.6 days suitable for fieldwork for the week ending Sunday, September 1, 2024. Precipitation totals from available reporting stations ranged from no rain to 2.3 inches of rain throughout the week. Average high temperatures ranged from the low 80s to the high 90s. Average low temperatures ranged from the high 50s to the mid 70s.

**Crops**

Another dry and hot week for most of the state with little to no noticeable rainfall amounts in many areas. The continued dry and hot conditions moved corn producers to increase harvesting activities to limit damage and irrigation needs. Many cotton and peanut producers used irrigation pivots to help alleviate dry field conditions. Early planted cotton bolls continued to open, but spider mite pressure in the later planted crop was noted to be significant. Most peanut producers were preparing to begin digging their crop in the next few weeks. Soybeans remained in mostly good condition, but some producers noted that leaves began to yellow and suffer due to lack of rainfall. Dry and hot conditions impacted hay fields and many producers worried that they might not be able to get a third cutting in this year. Armyworms continued to be noted and have significantly impacted hayfields and pastures throughout the state.

**Livestock and Pastures**

Cattle were in mostly good to fair condition, while pastures were in mostly fair to good condition. While some rainfall helped pastures that received it, dry conditions and armyworm damage continued to negatively affect conditions. Cattle operators continue to feed supplemental hay due to poor grazing conditions.

**Crop Progress for Week Ending 09/01/24**

Crop stage	Prev year	Prev week	This week	5 Year avg
	(percent)	(percent)	(percent)	(percent)
Corn - Mature .....	94	93	97	96
Corn - Harvested .....	64	50	68	66
Cotton - Setting Bolls .....	95	92	95	97
Cotton - Bolls Opening.....	22	16	28	30
Hay - 3rd Cutting.....	33	NA	32	42
Peanuts - Dug.....	1	NA	1	1
Soybeans - Setting Pods ...	81	85	89	87
Soybeans - Drop Leaves ...	17	16	26	13

(NA) Not available.

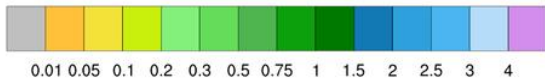
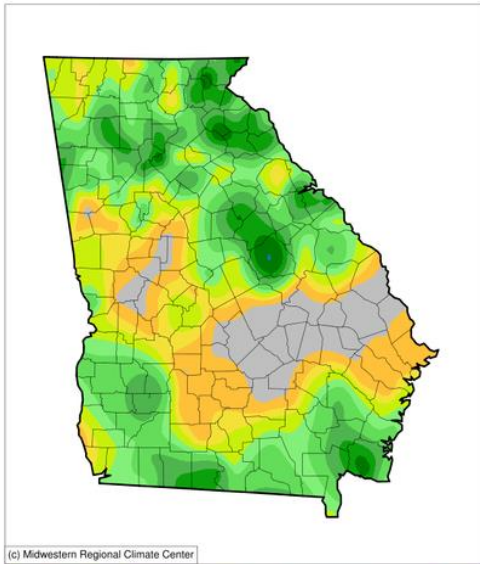
**Conditions for Week Ending 09/01/24**

Crop	Very poor	Poor	Fair	Good	Excellent
	(percent)	(percent)	(percent)	(percent)	(percent)
Cattle.....	3	8	30	50	9
Cotton.....	2	10	32	47	9
Pasture and range ....	15	25	34	25	1
Peanuts .....	1	8	33	49	9
Soybeans .....	2	10	34	50	4

**Soil Moisture for Week Ending 09/01/24**

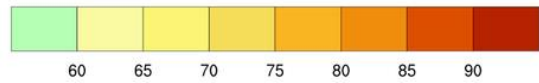
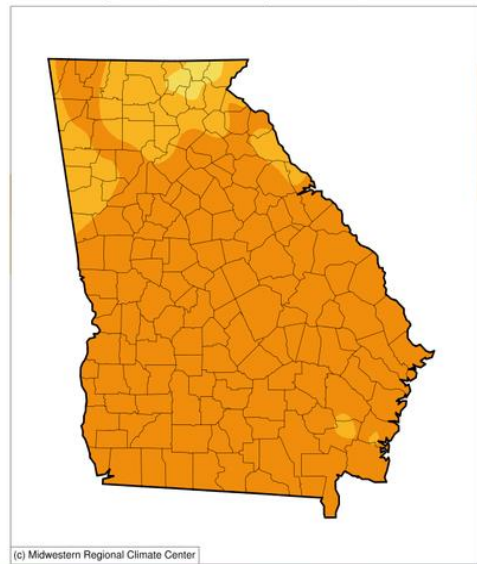
Topsoil	Previous week	This week
	(percent)	(percent)
Very short.....	20	29
Short.....	43	43
Adequate .....	36	27
Surplus .....	1	1
Subsoil	Previous week	This week
	(percent)	(percent)
Very short.....	15	24
Short.....	34	35
Adequate .....	50	41
Surplus .....	1	0

**Accumulated Precipitation (in)**  
August 26, 2024 to September 01, 2024



<https://mrcc.purdue.edu/CLIMATE>

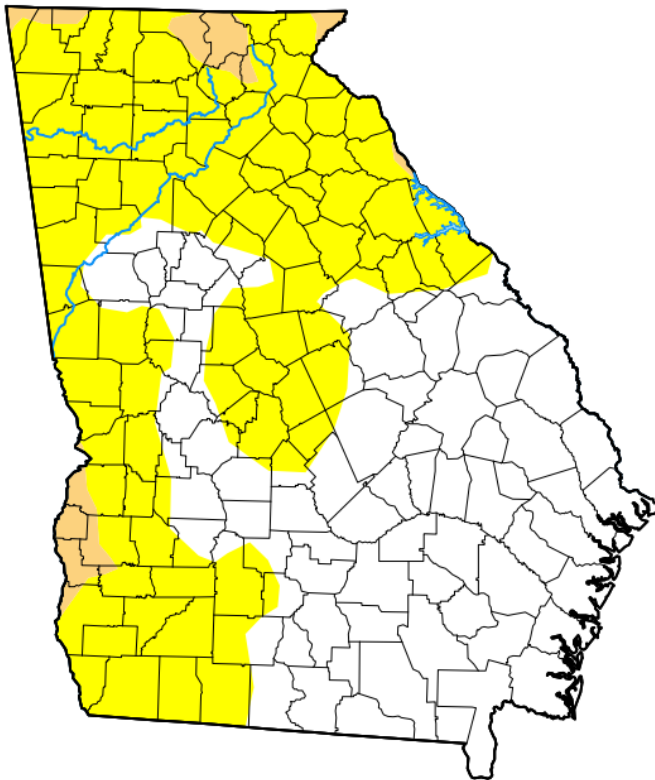
**Average Temperature (°F)**  
August 26, 2024 to September 01, 2024



<https://mrcc.purdue.edu/CLIMATE>

## U.S. Drought Monitor Georgia

**August 27, 2024**  
(Released Thursday, Aug. 29, 2024)  
Valid 8 a.m. EDT



Drought Conditions (Percent Area)

	None	D0-D4	D1-D4	D2-D4	D3-D4	D4
<b>Current</b>	48.16	51.84	3.07	0.00	0.00	0.00
<b>Last Week</b> 08-20-2024	85.36	14.64	0.36	0.00	0.00	0.00
<b>3 Months Ago</b> 05-28-2024	100.00	0.00	0.00	0.00	0.00	0.00
<b>Start of Calendar Year</b> 01-02-2024	46.66	53.34	28.92	11.91	0.07	0.00
<b>Start of Water Year</b> 09-26-2023	78.43	21.57	4.17	0.00	0.00	0.00
<b>One Year Ago</b> 08-29-2023	88.99	11.01	0.00	0.00	0.00	0.00

**Intensity:**

- None
- D0 Abnormally Dry
- D1 Moderate Drought
- D2 Severe Drought
- D3 Extreme Drought
- D4 Exceptional Drought

The Drought Monitor focuses on broad-scale conditions. Local conditions may vary. For more information on the Drought Monitor, go to <https://droughtmonitor.unl.edu/About.aspx>

**Author:**  
Richard Heim  
NCEI/NOAA



[droughtmonitor.unl.edu](https://droughtmonitor.unl.edu)