



United States Department of Agriculture  
National Agricultural Statistics Service  
**Georgia Crop Progress  
and Condition Report**



Cooperating with the Georgia Department of Agriculture and the Cooperative Extension Service  
Southern Regional Field Office · 355 East Hancock Avenue, Suite 100 · Athens, GA 30601 · (800) 253-4419  
[www.nass.usda.gov](http://www.nass.usda.gov)

This report contains data collected each week from respondents across the state whose occupations provide them opportunities to discuss agricultural production with farmers in their counties as well as to make visual observations. We thank all who have contributed to this report.

July 29, 2024

Media Contact: Anthony Prillaman

**General**

According to the National Agricultural Statistics Service in Georgia, there were 5.1 days suitable for fieldwork for the week ending Sunday, July 28, 2024. Precipitation totals from available reporting stations ranged from trace amounts to over 5 inches of rain throughout the week. Average high temperatures ranged from the low 80s to the high 90s. Average low temperatures ranged from the mid 60s to the mid 70s.

**Crops**

Most of the state saw varying degrees of rainfall throughout the week. This helped to replenish soil moisture to mostly adequate levels and brought about milder temperatures.

Corn was continuing to mature as some of the earliest fields were beginning to be harvested. Operators noted that some corn fields were beyond saving, making recent rains less beneficial in some areas. Cotton fields were noted to have improved in southwest Georgia now that they have been sidedressed and had growth regulators applied. While soybeans were in mostly good to fair condition, kudzu bugs were reported to be a significant issue in some soybean fields. Peach harvesting progressed, although was slowed down due to the rains.

**Livestock and Pastures**

Cattle were in mostly fair to good condition, as were pastures. Pastures were looking better after the recent rains; however, many areas will need more rain due to the weeks of dry and hot weather. Armyworms were noted as an issue in western Georgia pastures and hayfields. Some operators continued to feed supplemental hay, with concerns about feed reserves in the fall and winter.

**Crop Progress for Week Ending 7/28/24**

Crop stage	Prev year	Prev week	This week	5 Year avg
	(percent)	(percent)	(percent)	(percent)
Corn - Mature .....	42	40	56	52
Corn - Harvested .....	NA	NA	2	NA
Cotton - Squaring.....	92	85	90	93
Cotton - Setting Bolls .....	54	44	57	61
Hay - 2nd Cutting.....	77	71	77	81
Peaches - Harvested .....	81	84	88	89
Peanuts - Pegging.....	91	89	93	94
Soybeans - Blooming.....	69	71	82	73
Soybeans - Setting Pods ...	41	40	52	43

(NA) Not Available

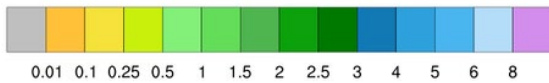
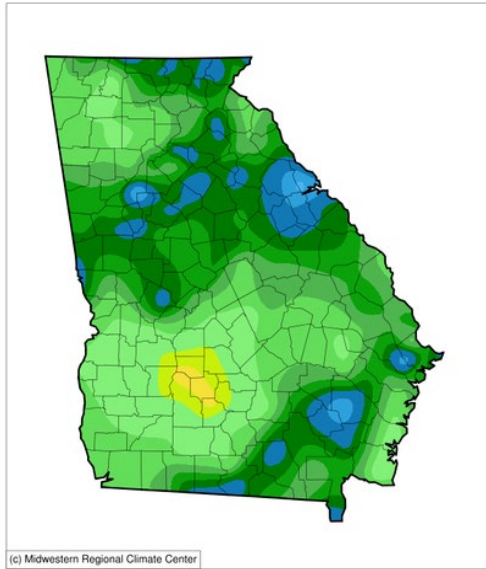
**Conditions for Week Ending 7/28/24**

Crop	Very poor	Poor	Fair	Good	Excellent
	(percent)	(percent)	(percent)	(percent)	(percent)
Cattle.....	3	8	32	49	8
Corn .....	8	12	26	46	8
Cotton.....	1	7	29	55	8
Pasture and range ....	12	19	34	32	3
Peanuts .....	1	7	27	56	9
Soybeans .....	2	10	32	52	4

**Soil Moisture for Week Ending 7/28/24**

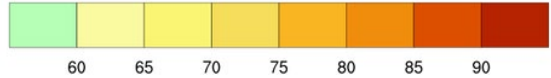
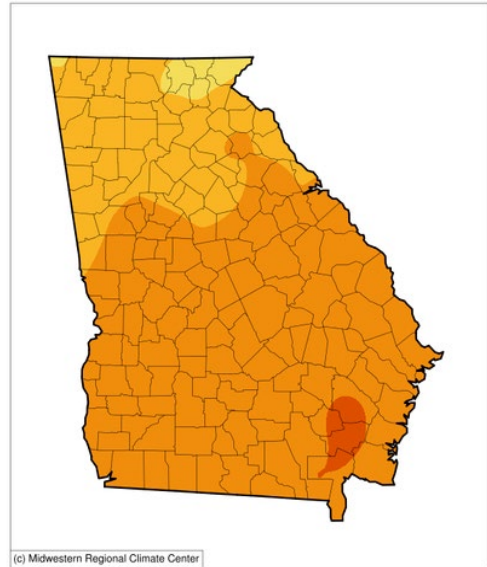
Topsoil	Previous week	This week
	(percent)	(percent)
Very short .....	10	3
Short.....	31	17
Adequate .....	55	69
Surplus .....	4	11
Subsoil	Previous week	This week
	(percent)	(percent)
Very short .....	10	5
Short.....	30	21
Adequate .....	58	70
Surplus .....	2	4

**Accumulated Precipitation (in)**  
July 22, 2024 to July 28, 2024



<https://mrcc.purdue.edu/CLIMATE>

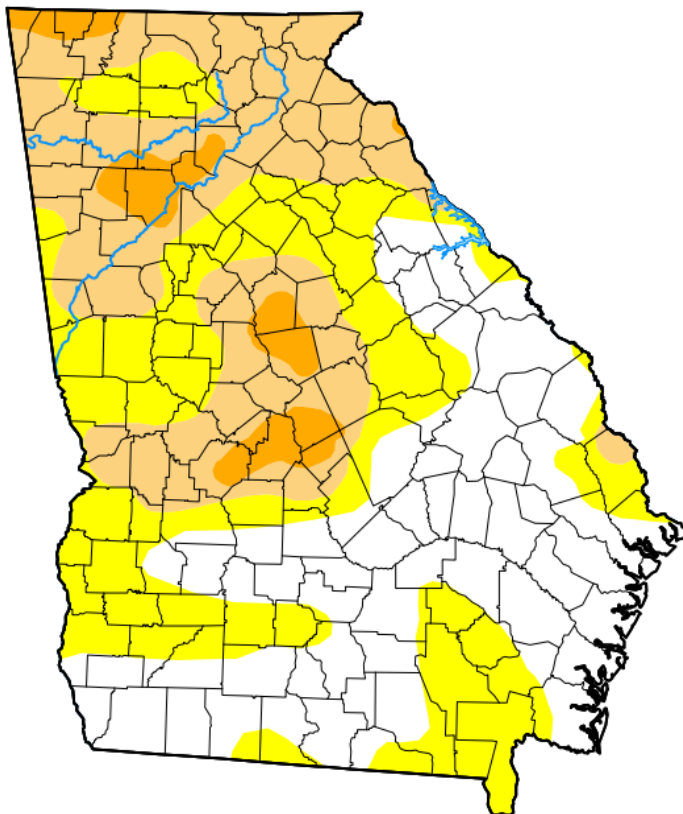
**Average Temperature (°F)**  
July 22, 2024 to July 28, 2024



<https://mrcc.purdue.edu/CLIMATE>

## U.S. Drought Monitor Georgia

**July 23, 2024**  
(Released Thursday, Jul. 25, 2024)  
Valid 8 a.m. EDT



*Drought Conditions (Percent Area)*

	None	D0-D4	D1-D4	D2-D4	D3-D4	D4
<b>Current</b>	36.43	63.57	31.28	5.05	0.00	0.00
<b>Last Week</b> <i>07-16-2024</i>	10.70	89.30	40.98	5.70	0.00	0.00
<b>3 Months Ago</b> <i>04-23-2024</i>	99.99	0.01	0.00	0.00	0.00	0.00
<b>Start of Calendar Year</b> <i>01-02-2024</i>	46.66	53.34	28.92	11.91	0.07	0.00
<b>Start of Water Year</b> <i>09-26-2023</i>	78.43	21.57	4.17	0.00	0.00	0.00
<b>One Year Ago</b> <i>07-25-2023</i>	100.00	0.00	0.00	0.00	0.00	0.00

**Intensity:**

- None
- D0 Abnormally Dry
- D1 Moderate Drought
- D2 Severe Drought
- D3 Extreme Drought
- D4 Exceptional Drought

The Drought Monitor focuses on broad-scale conditions. Local conditions may vary. For more information on the Drought Monitor, go to <https://droughtmonitor.unl.edu/About.aspx>

**Author:**

Rocky Bilotta  
NCEI/NOAA



[droughtmonitor.unl.edu](https://droughtmonitor.unl.edu)