



United States Department of Agriculture
National Agricultural Statistics Service
**Georgia Crop Progress
and Condition Report**



Cooperating with the Georgia Department of Agriculture and the Cooperative Extension Service
Southern Regional Field Office · 355 East Hancock Avenue, Suite 100 · Athens, GA 30601 · (800) 253-4419
www.nass.usda.gov

This report contains data collected each week from respondents across the state whose occupations provide them opportunities to discuss agricultural production with farmers in their counties as well as to make visual observations. We thank all who have contributed to this report.

July 15, 2024

Media Contact: Anthony Prillaman

General

According to the National Agricultural Statistics Service in Georgia, there were 6.3 days suitable for fieldwork for the week ending Sunday, July 14, 2024. Precipitation totals from available reporting stations ranged from no rain to over 5 inches of rain throughout the week. Average high temperatures ranged from the low 80s to the mid 90s. Average low temperatures ranged from the low 60s to the high 70s.

Crops

Most of the state received some rain last week, with the southeastern and northern areas of the state receiving the most precipitation. Conditions remained hot and humid, with many operators continuing to use irrigation pivots if available. Reporters in drought-stricken areas of the state noted that field crops were in mostly poor shape, with corn yields expected to be heavily impacted. Some soybean fields were also reported to be stressed by the dry weather. Cotton and peanut fields were reportedly in better shape, although there were reports of deer pressure in some cotton and peanut fields. Many hay producers remained unable to conduct a second cutting of hay due to stalled growth throughout drier areas of the state. Armyworms were reported to be an issue in some hayfields and pastures.

Livestock and Pastures

Cattle were in mostly good to fair condition, while pastures were mostly fair to good. Pastures in areas that received rain were reported to be improved, while those in drier areas of the state continued to struggle. Some operators continued to feed supplemental hay to cattle due to poor grazing conditions.

Crop Progress for Week Ending 7/14/24

Crop stage	Prev year (percent)	Prev week (percent)	This week (percent)	5 Year avg (percent)
Corn - Silking	95	94	98	97
Corn - Mature	18	16	27	24
Cotton - Squaring.....	74	71	77	79
Cotton - Setting Bolls	25	26	35	34
Hay - 2nd Cutting.....	52	53	63	63
Peaches - Harvested	68	60	72	79
Peanuts - Pegging	74	67	80	80
Soybeans - Blooming.....	46	44	58	47
Soybeans - Setting Pods ...	19	13	28	16

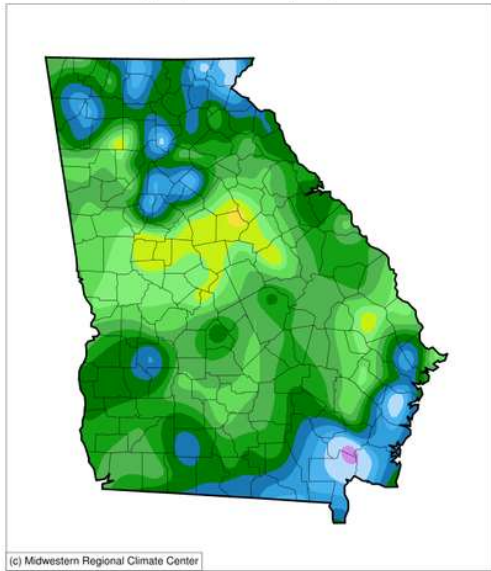
Conditions for Week Ending 7/14/24

Crop	Very poor (percent)	Poor (percent)	Fair (percent)	Good (percent)	Excellent (percent)
Cattle	4	9	34	43	10
Corn	7	11	29	42	11
Cotton.....	2	6	34	51	7
Pasture and range	17	24	32	25	2
Peanuts	1	8	33	50	8
Soybeans	3	9	32	50	6

Soil Moisture for Week Ending 7/14/24

Topsoil	Previous week (percent)	This week (percent)
Very short	28	18
Short.....	35	37
Adequate	36	44
Surplus	1	1
Subsoil	Previous week (percent)	This week (percent)
Very short	18	14
Short.....	35	39
Adequate	46	47
Surplus	1	0

Accumulated Precipitation (in)
July 08, 2024 to July 14, 2024



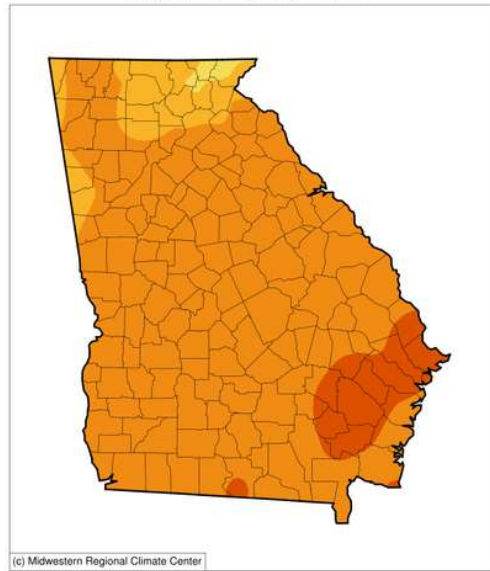
(c) Midwestern Regional Climate Center



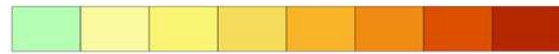
0.01 0.05 0.1 0.2 0.3 0.5 0.75 1 1.5 2 2.5 3 4

<https://mrcc.purdue.edu/CLIMATE>

Average Temperature (°F)
July 08, 2024 to July 14, 2024



(c) Midwestern Regional Climate Center

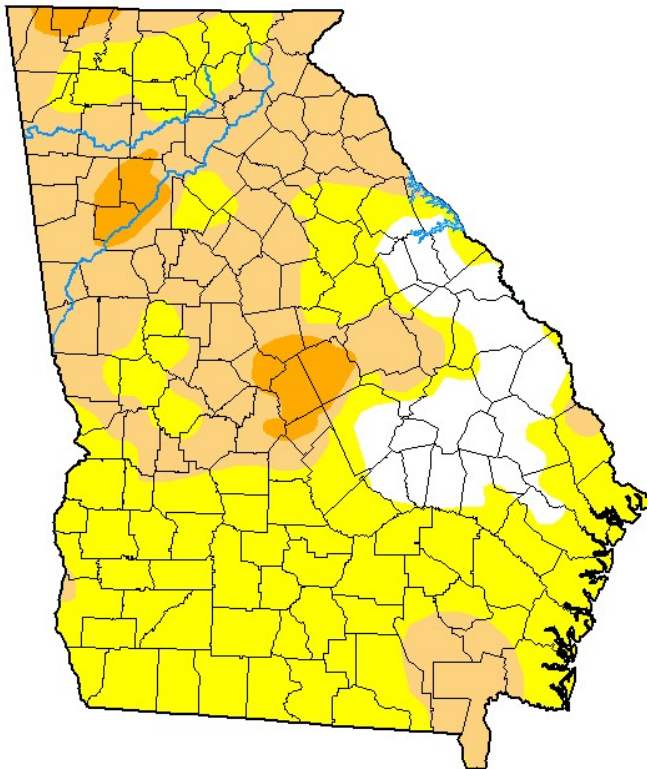


60 65 70 75 80 85 90

<https://mrcc.purdue.edu/CLIMATE>

U.S. Drought Monitor Georgia

July 9, 2024
(Released Thursday, Jul. 11, 2024)
Valid 8 a.m. EDT



Drought Conditions (Percent Area)

	None	D0-D4	D1-D4	D2-D4	D3-D4	D4
Current	10.70	89.30	39.34	4.21	0.00	0.00
Last Week 07-02-2024	4.39	95.61	49.36	3.66	0.00	0.00
3 Months Ago 04-09-2024	100.00	0.00	0.00	0.00	0.00	0.00
Start of Calendar Year 01-02-2024	46.66	53.34	28.92	11.91	0.07	0.00
Start of Water Year 09-26-2023	78.43	21.57	4.17	0.00	0.00	0.00
One Year Ago 07-11-2023	100.00	0.00	0.00	0.00	0.00	0.00

Intensity:

- None
- D0 Abnormally Dry
- D1 Moderate Drought
- D2 Severe Drought
- D3 Extreme Drought
- D4 Exceptional Drought

The Drought Monitor focuses on broad-scale conditions. Local conditions may vary. For more information on the Drought Monitor, go to <https://droughtmonitor.unl.edu/About.aspx>

Author:

Brian Fuchs
National Drought Mitigation Center



droughtmonitor.unl.edu