



United States Department of Agriculture
National Agricultural Statistics Service
**Georgia Crop Progress
and Condition Report**



Cooperating with the Georgia Department of Agriculture and the Cooperative Extension Service
Southern Regional Field Office · 355 East Hancock Avenue, Suite 100 · Athens, GA 30601 · (800) 253-4419
www.nass.usda.gov

This report contains data collected each week from respondents across the state whose occupations provide them opportunities to discuss agricultural production with farmers in their counties as well as to make visual observations. We thank all who have contributed to this report.

May 28, 2024

Media Contact: Anthony Prillaman

General

According to the National Agricultural Statistics Service in Georgia, there were 5.0 days suitable for fieldwork for the week ending Sunday, May 26, 2024. Precipitation totals from available reporting stations ranged from no rain to 4.0 inches of rain throughout the week. Average high temperatures ranged from the mid 70s to the low 90s. Average low temperatures ranged from the high 50s to the high 60s.

Crops

It was a dry week for most of the state, with only a few areas in the northern and southeastern regions of the state receiving significant precipitation. Farmers were frantically trying to finish planting cotton and peanuts. In areas with cooler and wetter conditions, some early planted cotton and peanut fields were reported to be negatively impacted by the weather, including the need for some peanut operators to replant the crop. Operators in drier areas of the state took advantage of the weather and conducted a significant amount of field work. Thrips were seen on some cotton crops, and some non-irrigated fields were reported to be struggling, but conditions remained mostly good overall. Hail damage was seen on some fruit crops from previous storms, but reporters noted that damage appeared to be mostly cosmetic. Onion harvest was nearly complete.

Livestock and Pastures

Cattle and pastures were reported to be in mostly good condition, although thistles continued to be a problem in some pasture fields. Reporters noted that fly problems on cattle had decreased to treatable thresholds.

Crop Progress for Week Ending 5/26/24

Crop stage	Prev year	Prev week	This week	5 Year avg
	(percent)	(percent)	(percent)	(percent)
Blueberries - Harvested	74	65	76	75
Corn - Silking	17	3	13	16
Cotton - Planted	63	47	63	67
Cotton - Squaring	1	NA	1	0
Hay - 1st Cutting	74	64	74	79
Oats - Harvested	34	24	36	45
Onions - Harvested	NA	93	96	NA
Peaches - Harvested	17	18	28	17
Peanuts - Planted	73	52	63	75
Soybeans - Planted	49	43	53	51
Soybeans - Emerged	37	27	38	35
Winter Wheat - Harvested..	33	34	43	43

(NA) Not Available

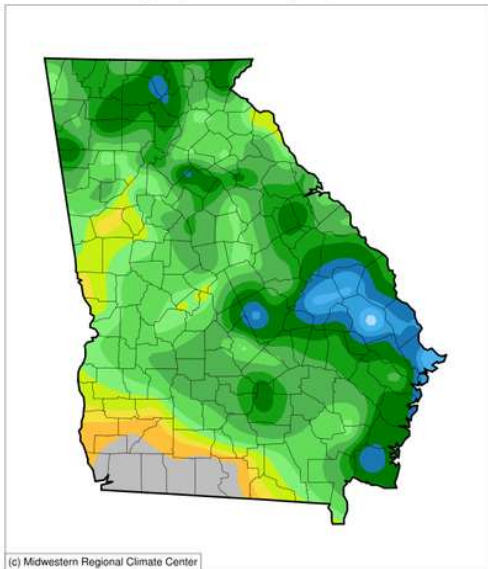
Conditions for Week Ending 5/26/24

Crop	Very poor	Poor	Fair	Good	Excellent
	(percent)	(percent)	(percent)	(percent)	(percent)
Cattle	1	4	20	61	14
Corn	0	2	20	61	17
Cotton	0	4	34	60	2
Oats	0	3	29	64	4
Pasture and range	2	6	25	56	11
Peaches	0	0	1	60	39
Peanuts	0	5	36	53	6
Winter Wheat	0	1	28	63	8

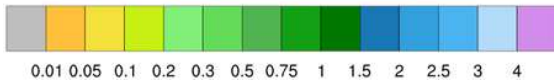
Soil Moisture for Week Ending 5/26/24

Topsoil	Previous week	This week
	(percent)	(percent)
Very short	1	0
Short	3	7
Adequate	50	70
Surplus	46	23
Subsoil	Previous week	This week
	(percent)	(percent)
Very short	1	1
Short	4	6
Adequate	58	75
Surplus	37	18

Accumulated Precipitation (in)
May 20, 2024 to May 26, 2024

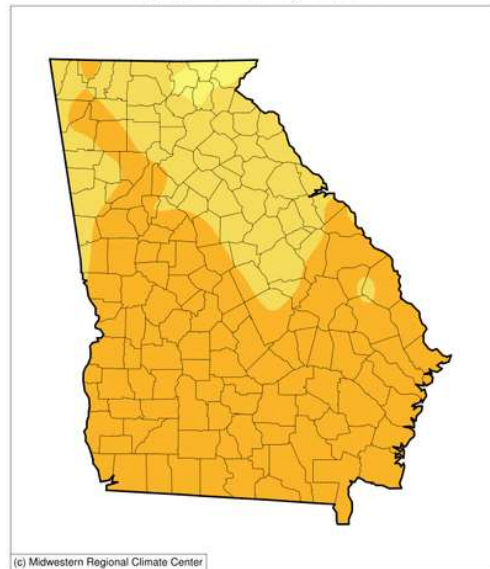


(c) Midwestern Regional Climate Center

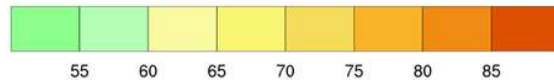


<https://mrcc.purdue.edu/CLIMATE>

Average Temperature (°F)
May 20, 2024 to May 26, 2024



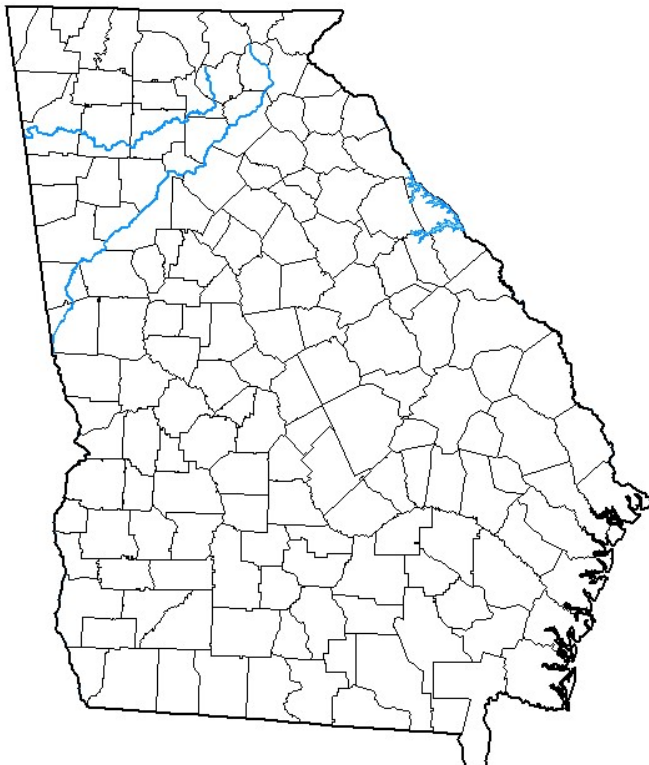
(c) Midwestern Regional Climate Center



<https://mrcc.purdue.edu/CLIMATE>

U.S. Drought Monitor Georgia

May 21, 2024
(Released Thursday, May 23, 2024)
Valid 8 a.m. EDT



Drought Conditions (Percent Area)

	None	D0-D4	D1-D4	D2-D4	D3-D4	D4
Current	100.00	0.00	0.00	0.00	0.00	0.00
Last Week 05-14-2024	100.00	0.00	0.00	0.00	0.00	0.00
3 Months Ago 02-20-2024	96.50	3.50	0.00	0.00	0.00	0.00
Start of Calendar Year 01-02-2024	46.66	53.34	28.92	11.91	0.07	0.00
Start of Water Year 09-26-2023	78.43	21.57	4.17	0.00	0.00	0.00
One Year Ago 05-23-2023	95.36	4.64	0.00	0.00	0.00	0.00

Intensity:

- None
- D0 Abnormally Dry
- D1 Moderate Drought
- D2 Severe Drought
- D3 Extreme Drought
- D4 Exceptional Drought

The Drought Monitor focuses on broad-scale conditions. Local conditions may vary. For more information on the Drought Monitor, go to <https://droughtmonitor.unl.edu/About.aspx>

Author:

David Simeral
Western Regional Climate Center



droughtmonitor.unl.edu