



United States Department of Agriculture
National Agricultural Statistics Service
**Georgia Crop Progress
and Condition Report**



Cooperating with the Georgia Department of Agriculture and the Cooperative Extension Service
Southern Regional Field Office · 355 East Hancock Avenue, Suite 100 · Athens, GA 30601 · (800) 253-4419
www.nass.usda.gov

This report contains data collected each week from respondents across the state whose occupations provide them opportunities to discuss agricultural production with farmers in their counties as well as to make visual observations. We thank all who have contributed to this report.

April 29, 2024

Media Contact: Anthony Prillaman

General

According to the National Agricultural Statistics Service in Georgia, there were 6.6 days suitable for fieldwork for the week ending Sunday, April 28, 2024. Precipitation ranged from no rain to 1.4 inches of rain throughout the week. Average high temperatures ranged from the low 60s to the low 80s. Average low temperatures ranged from the low 40s to the high 50s.

Crops

It was another dry week for most of the state, with only a few isolated areas receiving even moderate amounts of precipitation. Conditions were ideal for planting, although the rapidly diminished soil moisture over the past few weeks had caused concern for the warmer temperatures ahead. Reporters noted that some operators turned on irrigation pivots for the first time due to the lack of rain. With corn planting near completion, more operators began to plant cotton, peanuts, and soybeans. Hay producers were active baling their first cutting of hay while they could take advantage of the dry weather. Tobacco planting neared completion, while onion harvest continued to progress well throughout the week. Reporters noted instances of disease on strawberries, peaches, and plums.

Livestock and Pastures

Cattle and pastures were reported to be in good to fair condition. Pastures continued to green up due to warmer temperatures, but reporters noted instances of slow growth, possibly due to drought conditions in the fall.

Crop Progress for Week Ending 4/28/24

Crop stage	Prev year (percent)	Prev week (percent)	This week (percent)	5 Year avg (percent)
Blueberries - Harvested	34	9	25	31
Corn - Planted	90	80	89	91
Corn - Emerged	82	65	76	84
Cotton - Planted	7	4	10	9
Hay - 1st Cutting	24	17	33	25
Oats - Headed	NA	88	95	NA
Oats - Harvested	NA	NA	2	NA
Onions - Harvested	61	33	56	48
Peanuts - Planted	5	3	9	7
Soybeans - Planted	7	2	13	6
Winter Wheat - Headed	92	87	92	91

(NA) Not Available

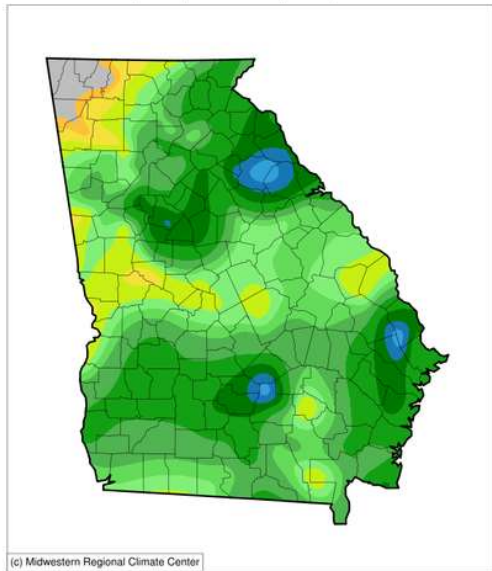
Conditions for Week Ending 4/28/24

Crop	Very poor (percent)	Poor (percent)	Fair (percent)	Good (percent)	Excellent (percent)
Blueberries	0	4	7	85	4
Cattle	1	5	22	58	14
Corn	0	2	21	69	8
Oats	1	2	24	68	5
Onions	0	0	20	74	6
Pasture and range	2	7	29	53	9
Peaches	0	0	1	70	29
Winter Wheat	0	1	27	63	9

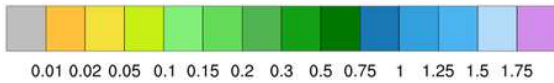
Soil Moisture for Week Ending 4/28/24

Topsoil	Previous week (percent)	This week (percent)
Very short	1	2
Short	10	27
Adequate	64	66
Surplus	25	5
Subsoil	Previous week (percent)	This week (percent)
Very short	1	1
Short	8	16
Adequate	65	77
Surplus	26	6

Accumulated Precipitation (in)
April 22, 2024 to April 28, 2024

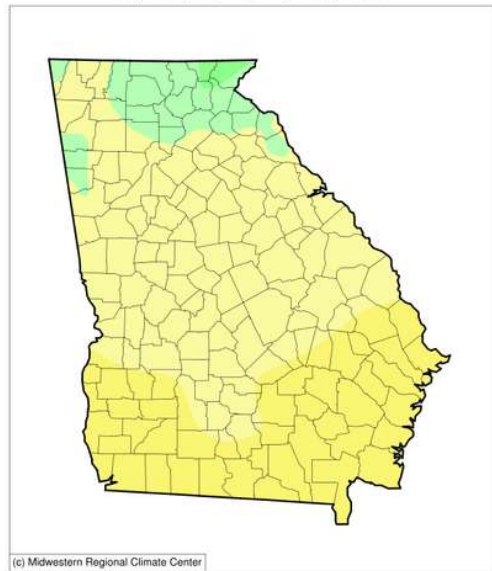


(c) Midwestern Regional Climate Center

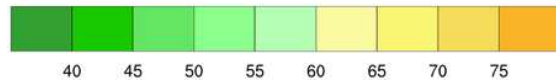


<https://mrcc.purdue.edu/CLIMATE>

Average Temperature (°F)
April 22, 2024 to April 28, 2024



(c) Midwestern Regional Climate Center



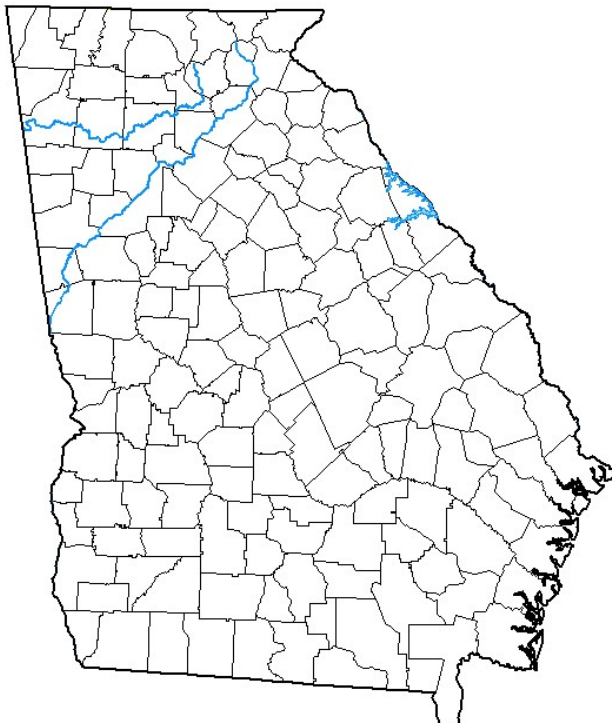
<https://mrcc.purdue.edu/CLIMATE>

U.S. Drought Monitor Georgia

April 23, 2024

(Released Thursday, Apr. 25, 2024)

Valid 8 a.m. EDT



Drought Conditions (Percent Area)

	None	D0-D4	D1-D4	D2-D4	D3-D4	D4
Current	99.99	0.01	0.00	0.00	0.00	0.00
Last Week 04-16-2024	100.00	0.00	0.00	0.00	0.00	0.00
3 Months Ago 01-23-2024	77.57	22.43	8.71	0.49	0.00	0.00
Start of Calendar Year 01-02-2024	46.66	53.34	28.92	11.91	0.07	0.00
Start of Water Year 09-26-2023	78.43	21.57	4.17	0.00	0.00	0.00
One Year Ago 04-25-2023	81.51	18.49	5.10	0.00	0.00	0.00

Intensity:

- None
- D0 Abnormally Dry
- D1 Moderate Drought
- D2 Severe Drought
- D3 Extreme Drought
- D4 Exceptional Drought

The Drought Monitor focuses on broad-scale conditions. Local conditions may vary. For more information on the Drought Monitor, go to <https://droughtmonitor.unl.edu/About.aspx>

Author:

David Simeral
Western Regional Climate Center



droughtmonitor.unl.edu