

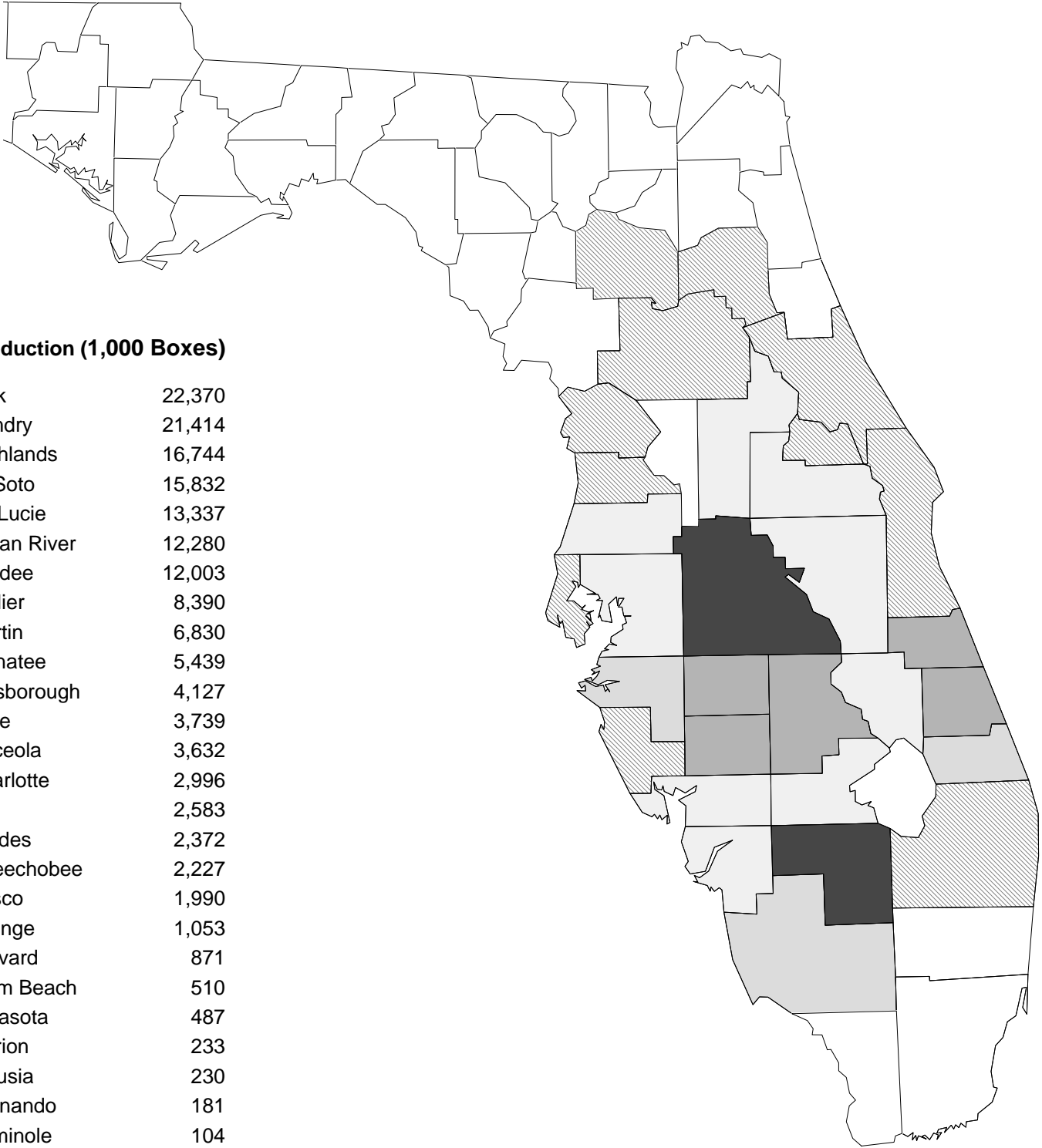
Click on Bookmarks tab to see page links. Click on CONTENTS to see more page links.

Citrus Summary

2006-07

Florida Agricultural Statistics Service

CITRUS PRODUCTION BY COUNTY 2006-07

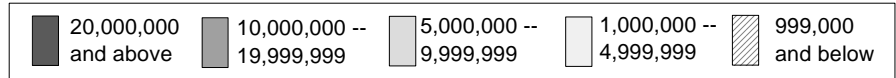


Production (1,000 Boxes)

Polk	22,370
Hendry	21,414
Highlands	16,744
DeSoto	15,832
St. Lucie	13,337
Indian River	12,280
Hardee	12,003
Collier	8,390
Martin	6,830
Manatee	5,439
Hillsborough	4,127
Lake	3,739
Osceola	3,632
Charlotte	2,996
Lee	2,583
Glades	2,372
Okeechobee	2,227
Pasco	1,990
Orange	1,053
Brevard	871
Palm Beach	510
Sarasota	487
Marion	233
Volusia	230
Hernando	181
Seminole	104
Other ^{1/}	76

Total 162,050

^{1/} Alachua, Citrus, Pinellas, and Putnam counties



Cover Photograph taken by Brett Miley – January 2008

FLORIDA AGRICULTURAL STATISTICS SERVICE

CITRUS SUMMARY 2006-07

FLORIDA DEPARTMENT OF AGRICULTURE
AND CONSUMER SERVICES

Tallahassee, Florida

Charles H. Bronson, Commissioner

USDA/NASS/FLORIDA

FIELD OFFICE

Orlando, Florida

Benjamin F. Klugh, Jr, Director

DIVISION OF MARKETING

AND DEVELOPMENT

Tallahassee, Florida

Nelson L. Mongiovi, Director

UNITED STATES DEPARTMENT OF AGRICULTURE

NATIONAL AGRICULTURAL STATISTICS SERVICE

FLORIDA FIELD OFFICE

Mailing address: P.O. Box 530105, Orlando, Florida 32853-0105

Physical address: 1222 Woodward Street, Orlando, Florida 32803

Web address: <http://www.nass.usda.gov/fl>

Telephone: (407) 648-6013 *Facsimile:* (407) 648-6029

email: nass-fl@nass.usda.gov

Cooperating with

U.S. Department of Agriculture, Agricultural Marketing Service

National Agricultural Statistics Service

ACKNOWLEDGMENT

The acreage, production, utilization, monthly and season average price, and crop value statistics for Florida as shown in this summary and corresponding data for other citrus states are official estimates of the USDA's National Agricultural Statistics Service. Chilled and frozen pack statistics were compiled by the Florida Department of Citrus. Where data are from other sources, appropriate references appear.

Records of the Division of Fruit and Vegetables, Florida Department of Agriculture and Consumer Services, were used in preparing production and utilization estimates. The Citrus Administrative Committee assisted in assembling these data.

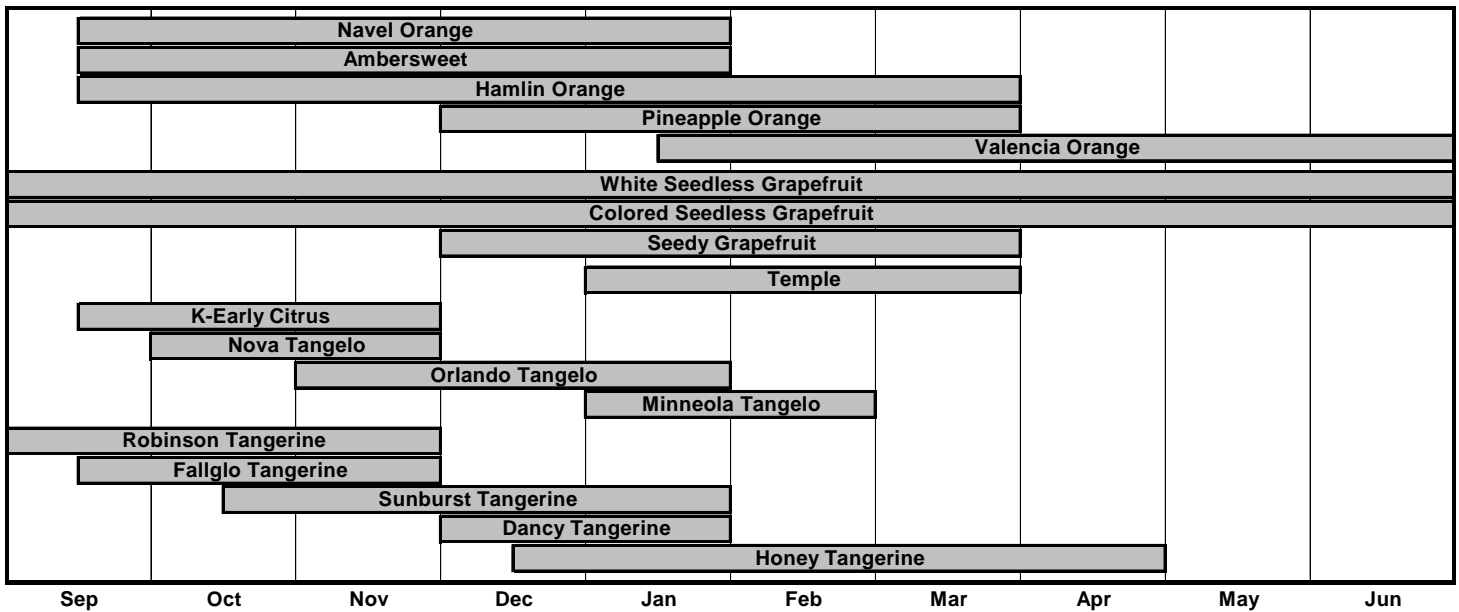
Many producers, shippers, processors, sales agencies, transportation firms, and others associated with the citrus industry voluntarily supplied basic data used to develop these statistics. Their contributions are sincerely appreciated.

This report was assembled under the direction of James A. Ewing, Robert R. Terry, William C. Curtis, Candice T. Erick, and Rhonda L. Ganzenmuller of the USDA/NASS/Florida Field Office.

Published February 2008

	Page		Page
Citrus Production: By county 2006-07....	Inside Front Cover	Florida Lemons: Acreage, production, season average on-tree price, and value, by types.....	23
Florida Citrus Harvesting Season, and Tree Census ...	iv	Florida Specialty Fruit: Bearing acreage, by variety chart.....	23
2006-07 Season Highlights		Florida Citrus: Monthly and season average on-tree price	
Production, value, foreign exports, and frozen concentrate	1	Early, midseason, and Navel oranges.....	24
Pricing Florida Citrus.....	2	Late (Valencia) oranges.....	24
2006-07 Weather Highlights.....	3	White grapefruit	25
Florida Citrus: Production since 1927-28 and History of Florida's Citrus Industry	4	Colored grapefruit	25
Citrus: Bearing acreage and production, by states		Tangelos	26
Citrus.....	5	Temples.....	26
Oranges	6	Early tangerines.....	27
Grapefruit	7	Honey tangerines.....	27
Florida Citrus: Trees, acreage, yield, production, utilization, season average on-tree price, and value		Florida Citrus: Trees by counties and fruit types.....	28
All oranges	8	Florida Citrus: Production by counties and fruit types ...	29
Early, midseason, and Navel oranges.....	8	Florida Citrus: Acres by counties and fruit types	30
Late (Valencia) oranges.....	9	Citrus: Bearing acreage by types and states.....	31
Navel oranges.....	9	Florida Citrus: Estimated boxes of fruit per tree, by types, age groups, and production areas	
All Grapefruit	10	Early, midseason, and Navel oranges.....	32
Seedy Grapefruit	10	Late (Valencia) oranges.....	33
White grapefruit	11	White seedless grapefruit	34
Colored grapefruit	11	Colored seedless grapefruit	35
Florida Grapefruit: Production by types, by areas	12	U.S. Exports: Fresh citrus, by seasons and fruit types.....	36
Florida Grapefruit: Season average on-tree prices.....	12	U.S. Citrus: Exports of fresh citrus, by destinations, months and fruit types	37
Florida Grapefruit: Bearing acreage and production, by variety chart.....	13	Florida Citrus: Certified exports of fresh Florida citrus, by weeks and fruit types.....	38
Florida Citrus: Trees, acreage, yield, production, utilization, season average on-tree price, and value		Florida Citrus: Certified exports of fresh Florida citrus, by seasons and fruit types.....	39
Tangelos	13	Florida Citrus: Exports of fresh Florida citrus, by destinations and fruit types.....	39
Florida Tangerines: Bearing acreage, by variety chart...	14	Florida Citrus: Processed fruit utilization, by weeks	
Florida Citrus: Trees, acreage, yield, production, utilization, season average on-tree price, and value		Oranges, grapefruit, and Temples	40
All tangerines	14	Tangelos, early tangerines, Honey tangerines	41
Early tangerines.....	15	Florida Citrus: Distribution of recorded utilization, by fruit types and months.....	42
Honey tangerines.....	15	Citrus and Other Fruits: Per capita consumption of citrus, fresh fruit, and selected fresh juices	43
Limes.....	16	Citrus Fruit: Production of citrus fruit, by selected countries, crop years, and fruit types.....	44
Temples	16	World Citrus Production: By selected countries	45
Florida Citrus Products: Annual packs, and FCOJ yield	17	State Field Offices	46
Citrus Utilization: Season average on-tree price, and value by states		Data Sources	47
All Oranges	18	U.S. Citrus: Production areas (Maps)	48
Early, midseason, Navel and Valencia	19	Commercial Citrus Acreage 2006.....	Inside Back Cover
Grapefruit	20		
Tangerines	21		
Tangelos, Temples and lemons	22		

FLORIDA CITRUS HARVESTING SEASON



TREE CENSUS

The Florida Agricultural Statistics Service first indexed the State's commercial citrus groves on aerial photography in January 1966. Each biennial commercial citrus tree inventory, photography covering the same three-mile-wide flight lines used in the original survey is used to detect recent changes. Changes detected by photo interpreters are followed up by a visit from experienced field personnel.

This past year, a special census was conducted in seven selected counties (Collier, DeSoto, Hendry, Indian River, Lee, Martin, Polk) located in Areas 1, 3, 4, and 5. The acreage visited represented 56% of the 2006 State total. Six of the counties visited were among the top ten producing counties for all citrus. The acreage loss in these seven counties was 4.1%. Although less than the 11.3% recorded in 2005-06, it is comparable to the losses in many two-year periods previous to the last complete biennial tree census period. Tree losses during the one-year period equal 4.1%, which is less than the 10.8% in 2006, but higher than the two-year figures for 2002 and 2004.

By fruit type, the greatest tree losses occurred in the specialty category, followed by grapefruit and oranges. By percentage, the greatest tree losses were in Martin (11.8%), Polk (5.7%), and

Hendry (4.0%). These three counties represented 86.7% of the total loss. DeSoto retained over 99% of the trees and acres reported in the 2006 census.

FLORIDA CITRUS: Acres in commercial groves from January 1966-2006

Census Year	Acres	Percent change from	
		Previous survey	1966 survey
1966	858,082	--	--
1968	931,249	8.5	8.5
1970	941,471	1.1	9.7
1972	878,019	-6.7	2.3
1974	864,098	-1.6	0.7
1976	852,369	-1.4	-0.7
1978	831,235	-2.5	-3.1
1980	845,283	1.7	-1.5
1982	847,856	0.3	-1.2
1984	761,365	-10.2	-11.3
1986	624,492	-18.0	-27.2
1988	697,929	11.8	-18.7
1990	732,767	5.0	-14.6
1992	791,290	8.0	-7.8
1994	853,742	7.9	-0.5
1996	857,687	0.5	0.0
1998	845,260	-1.4	-1.5
2000	832,275	-1.5	-3.0
2002	797,303	-4.2	-7.1
2004	748,555	-6.1	-12.8
2006	621,373	-17.0	-27.6

CITRUS BOX WEIGHTS: Approximate net weight by fruit type and states

State	Orange	Grapefruit	Tangerine	Lemon	Lime
	<i>Pounds</i>				
FL	^{1/} 90	85	95	90	88
CA	75	67	75	76	--
TX	85	80	--	--	--
AZ	75	67	75	76	--

^{1/} Includes Temples and tangelos at 90 pounds.

2006-07 SEASON HIGHLIGHTS

PRODUCTION

U.S. Citrus utilized production for the 2006-07 season totaled 10.3 million tons, down 13 percent from the 2005-06 season and 42 percent lower than the record high production of 17.8 million tons for the 1997-98 season. Florida accounted for 70 percent of total U.S. citrus production, California totaled 25 percent, while Texas and Arizona produced the remaining 5 percent.

Production of **Florida** citrus in the 2006-07 season was 162.1 million boxes, down 7.2 percent from the 2005-06 season. The primary reason for the lesser crop was low average fruit per tree on orange varieties. Early-midseason orange average fruit per tree, at 690, was the lowest since 1971. Valencia average fruit per tree, at 426, was the lowest on record.

Production was 12.5 percent lower for early-midseason-Navel oranges, and 13.0 percent lower for Valencia oranges. The all orange crop production, at 129.0 million boxes, was the lowest since the 110.2 million boxes in the freeze-affected 1989-90 season. Navel production, at 2.85 million boxes, was 25.0 percent lower than in 2005-06. All grapefruit production at 27.2 million boxes was 40.9 percent higher than the 2005-06 season. Decreases in production were recorded for all types of specialty fruit.

AREA AND COUNTY PRODUCTION

Total citrus production in 2006-07 was down in three of five Florida commercial citrus production areas from the 2005-06 season. The Northern area was down the most at 43 percent, followed by the Central and Southern areas down 30 percent and 21 percent, respectively.

Production decreased in three of the top four citrus producing counties. Polk, the top producing county, at 22.4 million boxes, was down 31 percent. Highlands, the third highest producing county, at 16.7 million boxes, was down 30 percent and Desoto the fourth highest, at 15.8 million boxes, was down 23 percent. With an increase of 36 percent, Hendry rose to second place with 21.4 million boxes.

Leading orange producers were Polk and Hendry with over 19 million boxes each, followed by Highlands and Desoto over 15 million boxes each. These four counties provided 54 percent of the total harvest. St. Lucie and Indian River far surpassed all other counties in grapefruit production, with over 9 million boxes each. Together, they accounted for 69 percent of the state's grapefruit crop.

The Southern and Central areas produced 65 percent of the tangerines while over half of the tangelos came from the

Central and Northern areas. Polk led in production of tangerines and tangelos. Hendry and Lake followed in specialty production.

VALUE

The value of the 2006-07 U.S. citrus crop was up 8 percent from the previous season, to \$2.95 billion (packinghouse-door equivalent). Total value of production for 2006-07 was higher for oranges, tangerines, and tangelos, and lower for grapefruit and lemons. Orange value of production increased 15 percent from the previous season, while grapefruit value decreased 18 percent. Tangerine value of production increased 2 percent. Lemon value of production decreased 2 percent. Tangelo value was up 20 percent from the previous season. Beginning with the 2006-07 season, Temple production and value is included in the early, midseason, and navel component of Florida's orange estimates.

Florida's \$1,362.4 million preliminary value of the 2006-07 citrus crop was 33.0 percent more than the 2005-06 season's revised value of \$1,024.6 million, and the highest since the 1988-89 season. The on-tree value of production was higher for all orange varieties, tangelos and late tangerines, but lower for grapefruit, and early tangerines. Price-per-box was higher for all orange varieties and specialty varieties, and lower for grapefruit.

FOREIGN EXPORTS

Fresh fruit exports totaled 15.0 million 4/5 bushel cartons. Japan accounted for the majority of Florida grapefruit. Canada received the most of Florida orange and specialty fresh fruit exports. More details are listed on page 39.

FROZEN CONCENTRATE

A total of 11.8 million gallons of FCOJ (Frozen Concentrated Orange Juice), and 6.8 million gallons of FCGJ (Frozen Concentrated Grapefruit Juice) were exported in the 2006-07 season. Final FCOJ yield, reported by the Florida Department of Citrus, was higher than the previous season for all oranges (1.64668 gallons per box), higher for early-midseason fruit (1.55547), and higher for late oranges (1.77415). The final tangerine yield (FCTJ) was down (1.46979) and the final grapefruit yield (FCGJ) was up (1.36478).

The price per box was higher than the previous season for all orange varieties and lower for grapefruit. The price per pound solids was higher for oranges and lower for grapefruit.

FLORIDA CITRUS: Value of sales on-tree, crop years
1996-97 through 2006-07

Crop year	Value	Crop year	Value
	<i>1,000 dollars</i>		<i>1,000 dollars</i>
1997-98	1,023,383	2002-03	787,378
1998-99	1,097,253	2003-04 ^{1/}	891,500
1999-00	1,108,523	2004-05 ^{1/}	754,169
2000-01	862,031	2005-06 ^{1/2/}	1,024,610
2001-02	966,803	2006-07 ^{3/}	1,362,427

^{1/} Excludes lemons.

^{2/} Revised.

^{3/} Preliminary.

PRICED FRUIT: 2006-07 Season average delivered-in
price for fruit used in concentrate by variety

Variety	Price per box	Price per pound of solids
	<i>Dollars</i>	
All oranges	11.77	1.79
Early-midseason	9.94	1.61
Valencia	13.64	1.95
All grapefruit	3.35	0.67
White	3.35	0.69
Colored	3.35	0.66

SOURCE: Florida Department of Citrus

PRICING FLORIDA CITRUS

PRICES

All prices reported in this publication, except the concentrate prices in the table on page one, are on-tree prices representing the average price received by growers for their fruit. The term "on-tree" relates to fruit returns to the grower after the costs of picking, hauling, and packing have been removed. Prices are based on records of commercial fresh fruit sales and processed fruit returns.

Each season, beginning with the first month that at least three percent of a fruit type is harvested, monthly estimates are computed. Reports from fresh fruit sales organizations and from packers provide data for an average freight-on board (f.o.b.) price. Processors report an average spot and cash price for fruit delivered to their plants. From these values, an estimated charge for picking, hauling, and packing is deducted to arrive at an on-tree price. The anticipated box utilization for the month is used to combine the fresh and processing price to obtain an average price for all methods of sales.

At the season's end, monthly price averages are computed and weighted by boxes utilized, to provide the preliminary season average price. A year later, after most processed products are sold, cooperatives and firms with participation plans report prices of fruit they handled. These prices, combined with the spot and cash prices collected earlier, are

weighted together by varieties to determine the final processing price received by growers. From this price, charges for picking, hauling, and packing, as estimated by University of Florida economists, are deducted to arrive at the final on-tree price received by growers. The preliminary figures for the season are revised and released annually in late September.

PACKOUT RATES

Fresh prices shown in this publication are for "pure fresh" or 100% packout. Grading diverts a portion of the crop from fresh use. Returns at processing plants for this diverted fruit will generally be less than for field run fruit because of extra costs. In order to compare fresh prices shown in this publication to the individual grower's return it is necessary to calculate a derived price for that crop. Below is an example and a blank table for calculating fresh returns based on packout rates.

The example describes a delivery of 1,000 boxes with a packout rate of 60% (0.60 in decimal format). At this rate, 600 boxes (1,000 x 0.60) are shipped fresh at a price of \$9.50 per 1 3/5 bushel box equivalent. The remaining 400 boxes (1,000 x 0.40) are eliminations hauled to a processing facility and receive a price of \$1.20. The grower receives \$5,700.00 for the fresh portion and \$480.00 for the processed portion. Dividing the total amount of \$6,180.00 by the total of 1,000 boxes results in a derived price of \$6.18 per box.

SAMPLE CALCULATION OF GROWER'S RETURN

	Packout Rate		Prorated Boxes	On-tree Price	Amount Received	Derived Price
	Percent	Decimal				
Shipped Fresh	60	0.60	600	x Fresh \$9.50 =	\$5,700.00	
Eliminations	40	0.40	400	x Processed \$1.20 =	\$480.00	
Delivered to Packinghouse	100	1.00	1,000		\$6,180.00	\$6.18

CALCULATE YOUR RETURN

	Packout Rate		Prorated Boxes	On-tree Price	Amount Received	Derived Price
	Percent	Decimal				
Shipped Fresh				x Fresh =		
Eliminations				x Processed =		
Delivered to Packinghouse						

2006-07 FLORIDA WEATHER HIGHLIGHTS, SELECTED AREAS, AND MONTHS

The month of **January 2006** was very warm and dry in citrus producing areas. Rainfall totals equaled two tenths of an inch in the north to just over one half of an inch in the western coastal citrus region. Growers in all areas used irrigation and began fertilizing and applying herbicides behind harvesting. The month of **February** was brought in by much needed rainfall. Cooler than normal seasonal temperatures were recorded during the month, with lows of 24 to 29 degrees in several central and southern counties.

March and **April** turned out to be very dry in the entire citrus region, with less than two inches of rainfall recorded in some areas for the period. **May** was slightly wetter, averaging about two inches of rain across the State for the month. Daytime high temperatures were often in the low to mid 90's. **June** was mostly dry, with heavy concentrations of rainfall only on a few days. Overall temperatures were above average, with several days in the mid 90's in all areas. Trees completed the flush stage with limbs beginning to harden before the months end. Groves that were irrigated early in the season were in fair to good condition. By **July**, citrus producing counties showed deficit rainfall amounts for the year. By **August**, trees were showing stress due to the hot, dry weather. During the last two weeks of the month, most citrus areas received several inches of needed rain. Appearance improved in many of the groves and fruit quality was enhanced.

All citrus producing areas received deficit rainfall amounts for the month of **September**, in some cases between five to six inches below normal. In **October** dry conditions continued. Even still, most trees in well cared for groves were in good condition. Color break was observed in early oranges, mostly in the southern area, while grapefruit was beginning to color across the state, most evident on inside fruit. Dry weather plagued much of the citrus producing area during the month of **November**. Consolidated showers assisted some of the northern and upper central counties mid-month with one to two inches of rainfall.

Florida's citrus producing region had unseasonably warm weather the complete month of **December**, accompanied by heavy rains and thunderstorms a few days during the month. In **January 2007**, near the end of the

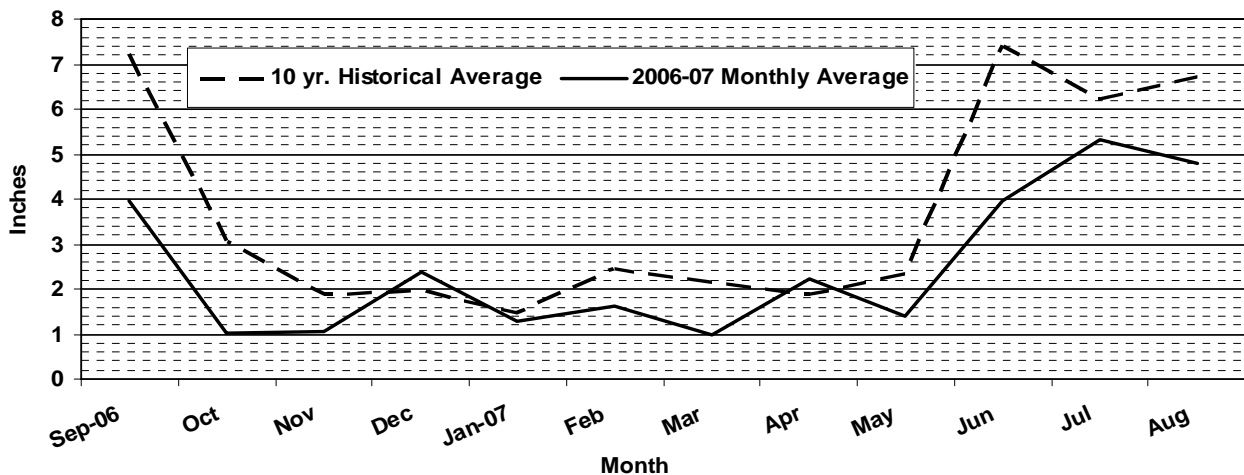
month, the coldest morning of the winter season was reported with lows in the low to mid 30's over most of the citrus areas. Light, scattered frost was reported on the ground but not in citrus trees.

Florida's citrus industry escaped serious damage from two cold snaps during the month of **February**. The first one was very early in the month when temperatures dropped to the low to mid thirties in all citrus areas. The second cold front came two weeks later. Cold pockets between 27 and 32 degrees were recorded in some citrus areas, but the duration was not long enough to cause any severe damage to the groves. Freeze-burned "flush" was reported to a minor extent. The bloom period came the third week of **March**. Coastal and upper interior areas experienced a full, open bloom on most varieties, while a few of the Valencia orange groves began showing petal drop. Rainfall for the month was below average in all areas.

Two storm fronts pushed across the State during the second week of the **April**, dumping much needed rain to citrus producing areas. The rest of the month was relatively dry. Rainfall during **May** was sparse with only local showers occurring on several days. Lake Okeechobee reached a record low level. Water restrictions were put in place in many areas. By the end of May, the state was facing one of the worst droughts since the collection of weather data. During the first week of **June**, Tropical Storm Barry dumped up to four inches of rain in much of the State's citrus producing areas. Similar weather patterns brought almost equal amounts of rainfall the second week. Growers realized some relief from the vigorous irrigation schedules they had been maintaining all season. Typical summer patterns continued into **July** with thunderstorms and afternoon showers developing across the citrus producing area on several days during the month. Overall, trees continued to make good progress, with growers having a positive outlook for next year's crop.

In the chart below, the 2006-07 monthly rainfall is compared to 10-year historical average data from two stations in each of the five citrus producing areas. The ten stations are: Arcadia, Balm, Ft. Pierce, Immokalee, Kenansville, Lake Alfred, Okahumpka, Ona, Sebring, and Umatilla.

Florida Precipitation: 10-year historical average rainfall and 2006-07 average monthly rainfall



SOURCE: See Page 47 Data Sources, Item 10.

FLORIDA CITRUS: Production of all citrus since 1927-1928

Crop year	Type of fruit				Crop year	Type of fruit			
	Oranges	Grape-fruit	Other	Total		Oranges	Grape-fruit	Other	Total
	<i>1,000 boxes</i>					<i>1,000 boxes</i>			
1927-28	8,650	7,500	850	17,000	1967-68	100,500	32,900	10,880	144,280
1928-29	15,000	11,300	1,506	27,806	1968-69	129,700	39,900	12,470	182,070
1929-30	8,950	8,300	858	18,108	1969-70	137,700	37,400	13,915	189,015
1930-31	16,800	15,800	2,408	35,008	1970-71	142,300	42,900	14,450	199,650
1931-32	12,200	10,700	2,009	24,909	1971-72	137,000	47,000	16,480	200,480
1932-33	14,500	11,600	1,910	28,010	1972-73	169,700	45,400	15,450	230,550
1933-34	15,900	10,900	2,012	28,812	1973-74	165,800	48,100	16,350	230,250
1934-35	15,600	15,200	2,015	32,815	1974-75	173,300	44,600	17,830	235,730
1935-36	15,900	11,500	2,112	29,512	1975-76	181,200	49,100	19,180	249,480
1936-37	19,100	18,100	3,045	40,245	1976-77	186,800	51,500	16,200	254,500
1937-38	23,900	14,600	2,370	40,870	1977-78	167,800	51,400	16,270	235,470
1938-39	29,900	23,300	3,495	56,695	1978-79	164,000	50,000	16,190	230,190
1939-40	25,350	15,900	2,745	43,995	1979-80	206,700	54,800	22,050	283,550
1940-41	28,200	24,600	3,180	55,980	1980-81	172,400	50,300	15,880	238,580
1941-42	26,800	19,200	2,650	48,650	1981-82	125,800	48,100	15,310	189,210
1942-43	36,650	27,300	4,925	68,875	1982-83	139,600	39,400	14,600	193,600
1943-44	45,500	31,000	4,490	80,990	1983-84	116,700	40,900	11,945	169,545
1944-45	42,230	22,300	4,670	69,200	1984-85	103,900	44,000	11,005	158,905
1945-46	49,000	32,000	5,200	86,200	1985-86	119,200	46,750	10,065	176,015
1946-47	52,080	26,400	4,790	83,270	1986-87	119,700	49,800	12,030	181,530
1947-48	57,530	29,300	4,440	91,270	1987-88	138,000	53,850	12,250	204,100
1948-49	57,380	30,200	5,520	93,100	1988-89	146,600	54,750	12,500	213,850
1949-50	57,790	24,200	5,970	87,960	1989-90	110,200	35,700	8,285	154,185
1950-51	66,200	33,200	5,980	105,380	1990-91	151,600	45,100	8,960	205,660
1951-52	76,900	33,000	6,060	115,960	1991-92	139,800	42,400	9,615	191,815
1952-53	70,500	32,500	6,920	109,920	1992-93	186,600	55,150	9,790	251,540
1953-54	89,100	40,700	7,070	136,870	1993-94	174,400	51,050	10,310	235,760
1954-55	85,900	34,800	7,998	128,698	1994-95	205,500	55,700	9,820	271,020
1955-56	88,200	38,300	7,935	134,435	1995-96	203,300	52,350	9,725	265,375
1956-57	90,300	37,400	8,020	135,720	1996-97	226,200	55,800	13,315	295,315
1957-58	81,000	31,100	4,300	116,400	1997-98	244,000	49,550	10,900	304,450
1958-59	83,000	35,200	7,800	126,000	1998-99	186,000	47,050	10,115	243,165
1959-60	87,600	30,500	7,470	125,570	1999-00	233,000	53,400	12,030	298,430
1960-61	82,700	31,600	9,940	124,240	2000-01	223,300	46,000	9,505	278,805
1961-62	108,800	34,800	10,210	153,810	2001-02	230,000	46,700	10,565	287,265
1962-63	72,500	30,000	5,250	107,750	2002-03	203,000	38,700	9,305	251,005
1963-64	54,900	26,300	8,620	89,820	2003-04	242,000	40,900	8,900	291,800
1964-65	82,400	31,900	9,350	123,650	2004-05	149,800	12,800	6,650	169,250
1965-66	95,900	34,900	10,190	140,990	2005-06	147,700	19,300	7,600	174,600
1966-67	139,500	43,600	11,895	194,995	2006-07	129,000	27,200	5,850	162,050

HISTORY OF FLORIDA'S CITRUS INDUSTRY

The citrus tree is native to the Orient. From there it was carried ever westward by man, to India, to the Mediterranean, and across the Atlantic. Citrus was brought to the Americas by Columbus. When he landed on November 22, 1493, on his second voyage, he brought citrus seeds that were planted on the island of Hispaniola. The first seeds planted on the mainland of the Americas were brought by the expedition of Juan de Grijalva when he landed in Central America between July 12 and July 20, 1518. The exact date of the introduction of citrus trees into Florida is not known, but from a statement made by Pedro Medendez, dated April 2, 1579, it appears that then citrus fruits were grown in abundance around St. Augustine.

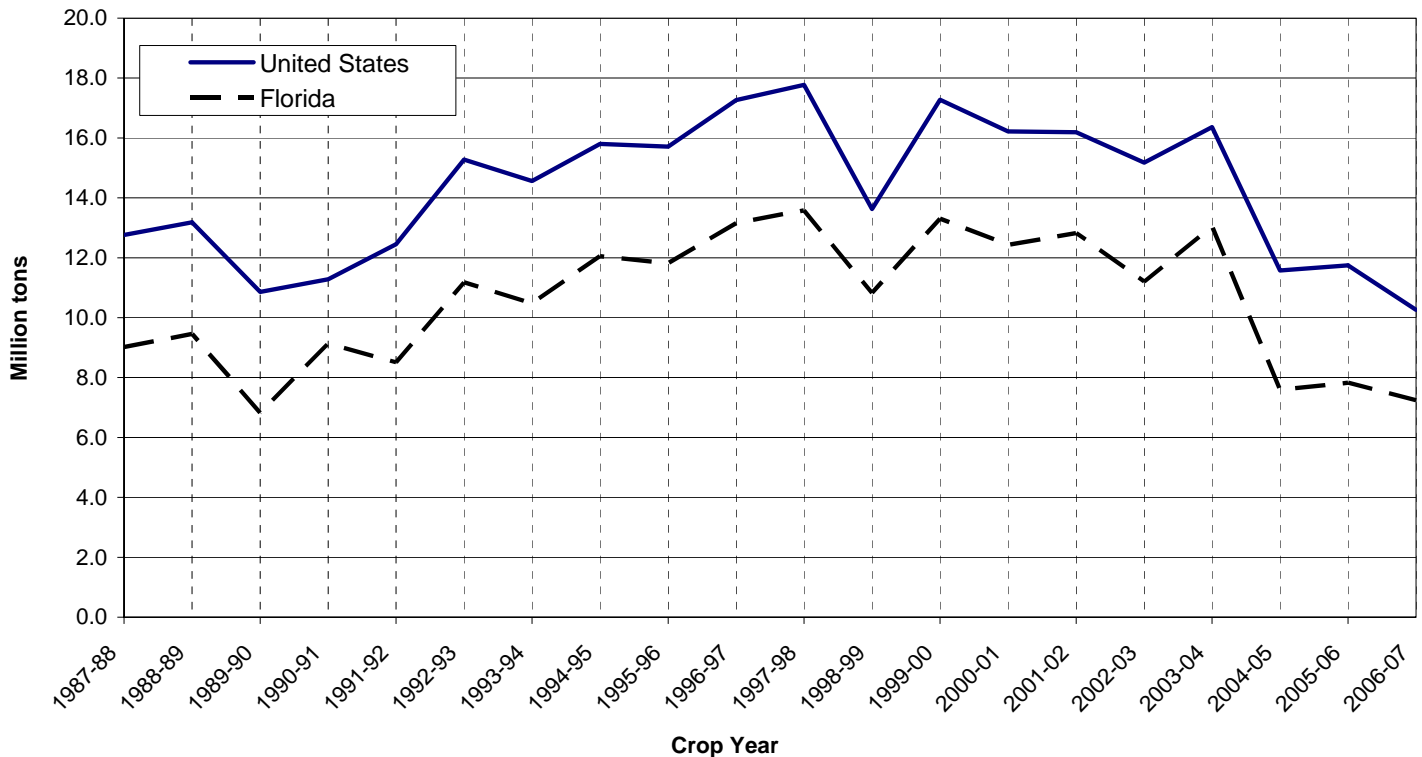
Early settlers in Florida some two centuries later found wild citrus trees scattered over the State. One of the oldest cultivated groves planted in Florida (Hume, 1926, p. 95) is thought to have been the Don Phillipe grove in Pinellas County, planted sometime between the years of 1809 and 1820. Nearly 1.5 million boxes were shipped in 1887-88, the first season on record. Citrus production in Florida had reached an all time high of more than 5 million boxes when the Great Freeze of 1894-95 almost totally wiped out the citrus industry. It was not until 1909-10 that this level was reached again. The highest production ever was reached in the 1997-1998 season, when Florida produced 304.5 million boxes.

**CITRUS: Bearing acreage and production, by states,
crop years 1987-88 through 2006-07**

Crop year	Florida		California		Texas		Arizona		United States	
	Bearing acreage	Production ^{1/}	Bearing acreage	Production	Bearing acreage	Production	Bearing acreage	Production	Bearing acreage	Production
	1,000 acres	1,000 tons	1,000 acres	1,000 tons	1,000 acres	1,000 tons	1,000 acres	1,000 tons	1,000 acres	1,000 tons
1987-88	519.5	9,020	250.7	3,235	27.1	213	35.6	293	832.9	12,761
1988-89	528.7	9,456	253.9	3,163	28.9	271	36.0	296	847.5	13,186
1989-90	534.6	6,823	249.4	3,649	31.7	131	36.1	257	851.8	10,860
1990-91	555.7	9,127	251.0	1,837	8.0	0	35.2	321	849.9	11,285
1991-92	583.6	8,510	254.5	3,522	11.0	4	37.0	416	886.1	12,452
1992-93	639.3	11,175	255.9	3,662	14.5	97	37.7	340	947.4	15,274
1993-94	665.8	10,484	256.5	3,569	18.2	144	37.6	364	978.1	14,561
1994-95	731.7	12,054	263.7	3,267	21.9	230	37.8	248	1,055.1	15,799
1995-96	773.5	11,815	270.0	3,342	25.5	222	34.2	333	1,103.2	15,712
1996-97	815.1	13,156	274.1	3,632	29.1	273	34.2	210	1,152.5	17,271
1997-98	785.9	13,583	274.5	3,744	32.6	256	32.3	187	1,125.3	17,770
1998-99	777.1	10,827	275.2	2,266	29.1	305	30.2	235	1,111.6	13,633
1999-00	762.4	13,305	269.2	3,457	29.1	308	29.2	206	1,089.9	17,276
2000-01	756.0	12,433	268.2	3,197	29.1	383	28.7	203	1,082.0	16,216
2001-02	727.6	12,824	269.5	2,907	28.3	310	28.5	153	1,053.9	16,194
2002-03	718.1	11,206	259.2	3,530	27.3	292	27.3	152	1,031.9	15,180
2003-04	679.0	13,045	252.0	2,855	27.3	298	27.0	162	985.3	16,360
2004-05	641.4	7,597	251.0	3,511	27.3	339	26.0	127	945.7	11,574
2005-06	576.4	7,823	250.5	3,460	27.3	277	23.5	185	877.7	11,745
2006-07	554.4	7,236	251.5	2,539	27.3	368	23.0	121	856.2	10,264

^{1/} Does not include lemons. K-Early Citrus Fruit included from 1992-93 through 2001-02. Sunburst tangerines included beginning in 1989-90. Fallglo tangerines included beginning in 1993-94. Lime estimates discontinued after 2001-02.

**CITRUS: Production for the United States and Florida
1987-88 through 2006-07**

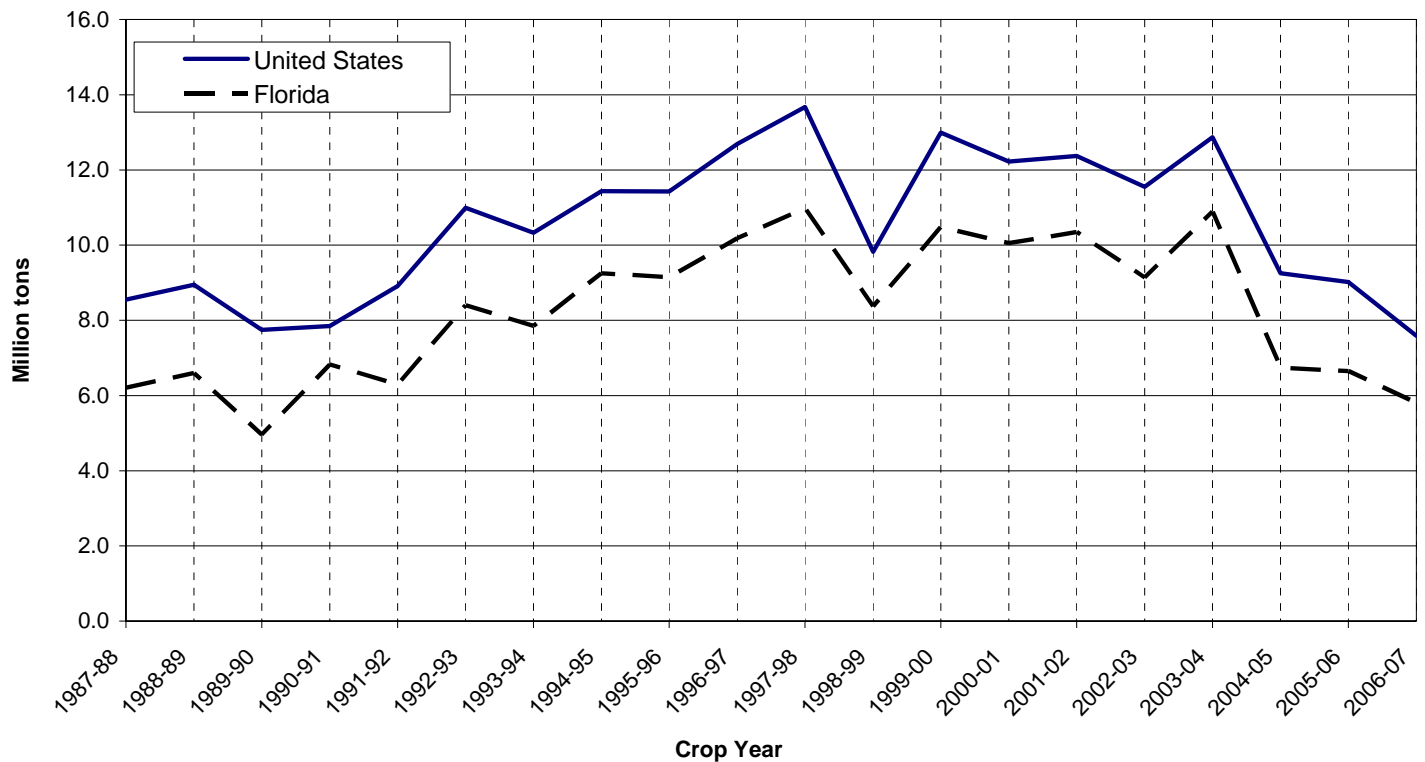


**ORANGES: Bearing acreage and production, by states,
crop years 1987-88 through 2006-07**

Crop year	Florida		California		Texas		Arizona		United States	
	Bearing acreage	Production	Bearing acreage	Production	Bearing acreage	Production	Bearing acreage	Production	Bearing acreage	Production
	1,000 acres	1,000 tons	1,000 acres	1,000 tons	1,000 acres	1,000 tons	1,000 acres	1,000 tons	1,000 acres	1,000 tons
1987-88	380.2	6,210	172.6	2,212	11.1	61	10.6	68	574.5	8,551
1988-89	388.7	6,597	177.6	2,209	12.0	79	10.4	64	588.7	8,949
1989-90	399.5	4,959	175.1	2,676	13.0	51	10.2	59	597.8	7,745
1990-91	420.9	6,822	178.4	960	3.5	0	9.9	66	612.7	7,848
1991-92	444.4	6,291	181.8	2,528	3.5	1	10.4	89	640.1	8,909
1992-93	489.2	8,397	184.0	2,505	4.4	21	10.6	69	688.2	10,992
1993-94	510.8	7,849	185.0	2,385	5.5	24	10.6	71	711.9	10,329
1994-95	562.8	9,248	191.0	2,101	7.0	44	10.4	39	771.2	11,432
1995-96	594.8	9,149	196.0	2,175	7.9	40	9.4	62	808.1	11,426
1996-97	624.9	10,179	200.0	2,400	8.7	60	10.0	53	843.6	12,692
1997-98	609.2	10,980	200.2	2,587	9.5	65	9.1	38	828.0	13,670
1998-99	612.6	8,370	201.5	1,350	9.1	61	6.9	43	830.1	9,824
1999-00	602.1	10,485	195.5	2,400	9.1	71	6.2	41	812.9	12,997
2000-01	605.0	10,049	194.5	2,043	9.1	95	6.4	34	815.0	12,221
2001-02	586.9	10,350	195.0	1,931	9.3	74	6.4	19	797.6	12,374
2002-03	587.6	9,135	189.5	2,326	8.8	66	5.8	18	791.7	11,545
2003-04	564.8	10,890	184.0	1,894	8.8	70	5.5	18	763.1	12,872
2004-05	541.8	6,741	182.0	2,419	8.8	76	5.0	16	737.6	9,252
2005-06	491.0	6,647	181.0	2,288	8.8	69	4.3	17	685.1	9,021
2006-07 ^{1/}	475.9	5,805	179.0	1,688	8.8	84	4.3	12	668.0	7,589

^{1/} Temples included in early, midseason, and Navel varieties in the 2006-07 season.

**ORANGES: Production for the United States and Florida
1987-88 through 2006-07**

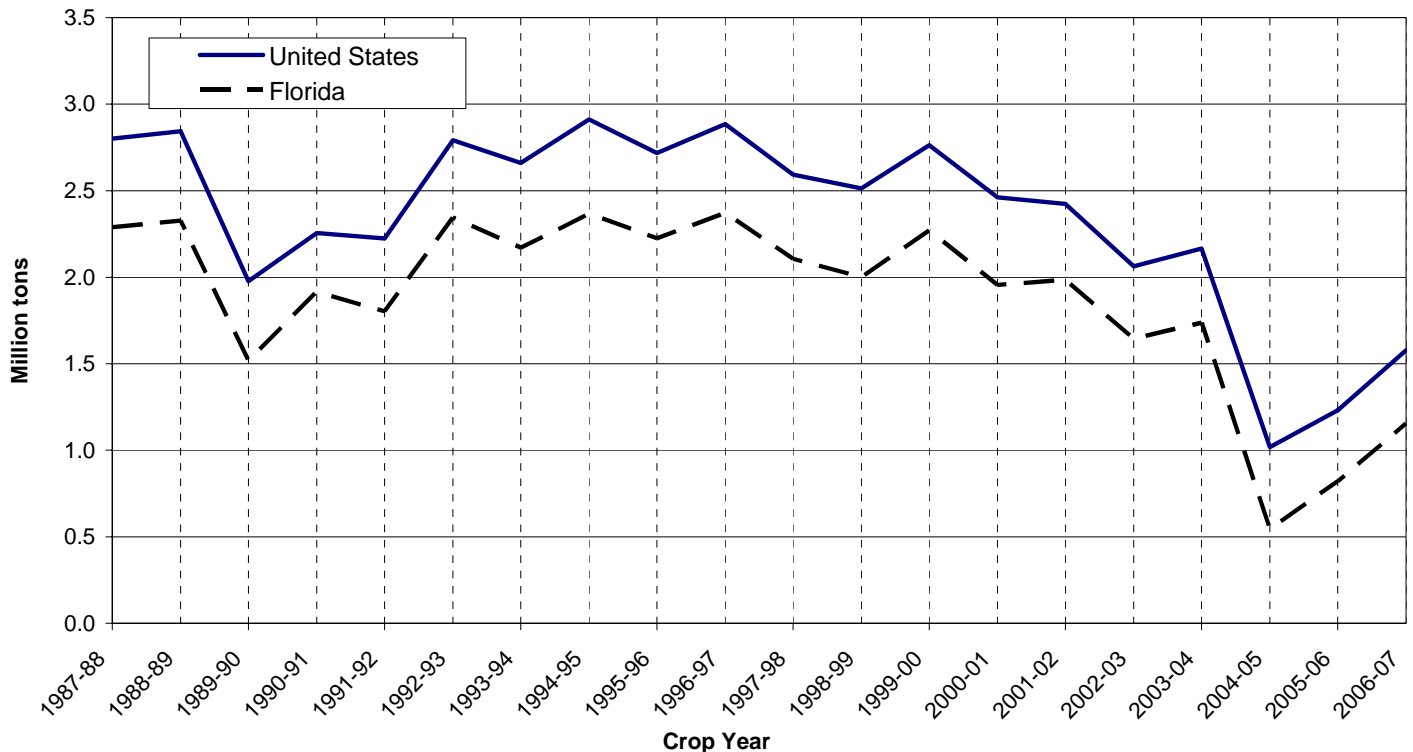


**GRAPEFRUIT: Bearing acreage and production, by states,
crop years 1987-88 through 2006-07**

Crop year	Florida		Texas		California		Arizona		United States	
	Bearing acreage	Production ^{1/}	Bearing acreage	Production	Bearing acreage	Production ^{2/}	Bearing acreage	Production ^{2/}	Bearing acreage	Production
	1,000 acres	1,000 tons	1,000 acres	1,000 tons	1,000 acres	1,000 tons	1,000 acres	1,000 tons	1,000 acres	1,000 tons
1987-88	106.0	2,289	16.0	152	20.7	298	6.0	62	148.7	2,801
1988-89	106.9	2,327	16.9	192	19.9	263	6.5	62	150.2	2,844
1989-90	103.0	1,517	18.7	80	19.2	310	6.4	71	147.3	1,978
1990-91	104.2	1,916	4.5	0	18.3	263	6.2	77	133.2	2,256
1991-92	104.7	1,802	7.5	3	18.5	330	5.9	89	136.6	2,224
1992-93	111.9	2,344	10.1	75	17.8	303	5.9	69	145.7	2,791
1993-94	118.3	2,171	12.8	120	18.0	311	5.9	59	155.0	2,661
1994-95	127.3	2,367	15.0	186	18.4	312	5.7	47	166.4	2,912
1995-96	132.8	2,225	17.7	182	18.8	271	5.1	40	174.4	2,718
1996-97	139.2	2,371	20.4	212	18.0	275	4.4	27	182.0	2,885
1997-98	127.8	2,106	23.1	192	16.8	268	4.0	27	171.7	2,593
1998-99	116.6	2,000	20.0	244	16.6	244	3.3	25	156.5	2,513
1999-00	114.1	2,270	20.0	237	16.6	241	2.8	15	153.5	2,763
2000-01	107.8	1,955	20.0	288	15.4	211	2.0	8	145.2	2,462
2001-02	101.3	1,985	19.0	236	14.0	198	2.0	5	136.3	2,424
2002-03	95.5	1,645	18.5	226	13.0	188	1.5	4	128.5	2,063
2003-04	82.3	1,738	18.5	228	12.5	194	1.5	5	114.8	2,165
2004-05	71.0	544	18.5	264	12.0	205	1.5	5	103.0	1,018
2005-06	59.8	820	18.5	208	11.5	201	1.2	3	91.0	1,232
2006-07	57.4	1,156	18.5	284	11.5	134	1.2	3	88.6	1,577

^{1/} Excludes economic abandonment in 1995-96 of 127,500 tons of colored seedless; in 1996-97 of 127,500 tons of white seedless and 127,500 tons of colored seedless; in 1997-98 of 212,500 tons of white seedless and 42,500 tons of colored seedless; and in 2000-01 of 85,000 tons of colored seedless. ^{2/} Box weight for California Desert and Arizona grapefruit changed in 1993-94.

**GRAPEFRUIT: Production for the United States and Florida
1987-88 through 2006-07**



FLORIDA CITRUS: Trees, acreage, yield, production, utilization, season average price, and value
for crop years 1987-88 through 2006-07 ^{1/}

Crop year	Bearing trees <i>1,000 trees</i>	Bearing acreage <i>1,000 acres</i>	Yield per acre <i>Boxes</i>	Utilization of production			On-tree	
				Total	Fresh	Processed	Price per box <i>Dollars</i>	Value of production <i>1,000 dollars</i>
				<i>1,000 boxes</i>				
ALL ORANGES ^{2/}								
1987-88	35,537	380.2	363	138,000	9,520	128,480	7.58	1,046,700
1988-89	36,750	388.7	377	146,600	8,488	138,112	7.41	1,086,319
1989-90	40,666	399.5	276	110,200	5,922	104,278	6.21	684,226
1990-91	44,077	420.9	360	151,600	12,451	139,149	5.89	892,675
1991-92	49,577	444.4	315	139,800	11,552	128,248	5.93	828,749
1992-93	56,601	489.2	381	186,600	10,724	175,876	3.48	649,713
1993-94	61,708	510.8	341	174,400	9,898	164,502	4.09	713,312
1994-95	69,295	562.8	365	205,500	10,441	195,059	3.74	767,924
1995-96	75,287	594.8	342	203,300	9,969	193,331	4.40	895,465
1996-97	78,525	624.9	362	226,200	10,696	215,504	3.54	801,344
1997-98	78,587	609.2	401	244,000	11,010	232,990	3.69	900,815
1998-99	79,608	612.6	304	186,000	10,860	175,140	4.84	900,044
1999-00	78,721	602.1	387	233,000	9,393	223,607	3.67	856,052
2000-01	79,565	605.0	369	223,300	9,702	213,598	3.21	716,055
2001-02	77,596	586.9	392	230,000	9,381	220,619	3.47	797,602
2002-03	78,037	587.6	345	203,000	9,713	193,287	3.17	643,804
2003-04	75,392	564.8	428	242,000	9,893	232,107	2.89	699,927
2004-05	72,592	541.8	276	149,800	7,397	142,403	3.49	522,892
2005-06	65,954	491.0	301	147,700	7,314	140,386	5.51	813,322
2006-07	63,950	475.9	271	129,000	6,438	122,562	9.18	1,184,232
EARLY, MIDSEASON, AND NAVAL ORANGES ^{2/}								
1987-88	18,822	198.1	396	78,500	5,870	72,630	6.72	527,169
1988-89	19,744	205.4	415	85,300	5,434	79,866	6.69	571,082
1989-90	22,034	215.3	316	68,100	4,851	63,249	6.01	409,376
1990-91	23,511	223.3	392	87,500	5,966	81,534	5.38	471,049
1991-92	27,051	243.3	343	83,400	7,780	75,620	5.44	453,501
1992-93	30,379	264.1	433	114,300	6,958	107,342	3.23	369,438
1993-94	32,312	271.7	395	107,300	6,838	100,462	3.76	403,802
1994-95	36,244	299.4	400	119,700	6,681	113,019	3.25	389,515
1995-96	38,914	314.5	385	121,200	6,597	114,603	3.62	438,350
1996-97	40,292	328.9	408	134,200	7,181	127,019	3.18	427,344
1997-98	39,861	317.4	441	140,000	7,635	132,365	2.81	393,577
1998-99	40,124	317.7	353	112,000	6,164	105,836	4.35	487,205
1999-00	38,833	306.7	437	134,000	6,505	127,495	3.19	427,513
2000-01	38,446	302.1	424	128,000	6,225	121,775	2.60	332,991
2001-02	36,617	286.4	447	128,000	6,424	121,576	2.88	369,069
2002-03	36,355	283.0	396	112,000	6,773	105,227	2.62	293,594
2003-04	34,445	266.3	473	126,000	5,615	120,385	2.20	277,715
2004-05	32,165	249.3	317	79,100	4,403	74,697	2.82	223,193
2005-06	28,784	220.4	340	75,000	4,896	70,104	4.70	352,833
2006-07	27,790	212.7	308	65,600	4,162	61,438	7.50	492,099

^{1/} 2006-07 preliminary.

^{2/} Includes Temples in 2006-07

FLORIDA CITRUS: Trees, acreage, yield, production, utilization, season average price, and value
for crop years 1987-88 through 2006-07 ^{1/}

Crop year	Bearing trees	Bearing acreage	Yield per acre	Utilization of production			On-tree	
				Total	Fresh	Processed	Price per box	Value of production
	<i>1,000 trees</i>	<i>1,000 acres</i>	<i>Boxes</i>	<i>1,000 boxes</i>			<i>Dollars</i>	<i>1,000 dollars</i>
LATE (VALENCIA) ORANGES								
1987-88	16,715	182.1	327	59,500	3,650	55,850	8.73	519,531
1988-89	17,006	183.3	334	61,300	3,054	58,246	8.41	515,237
1989-90	18,632	184.2	229	42,100	1,071	41,029	6.53	274,850
1990-91	20,566	197.6	324	64,100	6,485	57,615	6.58	421,626
1991-92	22,526	201.1	280	56,400	3,772	52,628	6.65	375,248
1992-93	26,222	225.1	321	72,300	3,766	68,534	3.88	280,275
1993-94	29,396	239.1	281	67,100	3,060	64,040	4.61	309,510
1994-95	33,051	263.4	326	85,800	3,760	82,040	4.41	378,409
1995-96	36,373	280.3	293	82,100	3,372	78,728	5.57	457,115
1996-97	38,233	296.0	311	92,000	3,515	88,485	4.07	374,000
1997-98	38,726	291.8	356	104,000	3,375	100,625	4.88	507,238
1998-99	39,484	294.9	251	74,000	4,696	69,304	5.58	412,839
1999-00	39,888	295.4	335	99,000	2,888	96,112	4.33	428,539
2000-01	41,119	302.9	315	95,300	3,477	91,823	4.02	383,064
2001-02	40,979	300.5	339	102,000	2,957	99,043	4.20	428,533
2002-03	41,682	304.6	299	91,000	2,940	88,060	3.85	350,210
2003-04	40,947	298.5	389	116,000	4,278	111,722	3.64	422,212
2004-05	40,427	292.5	242	70,700	2,994	67,706	4.24	299,699
2005-06	37,170	270.6	269	72,700	2,418	70,282	6.33	460,489
2006-07	36,160	263.2	241	63,400	2,276	61,124	10.92	692,133
NAVEL ORANGES								
1987-88	1,207	12.5	208	2,600	2,046	554	9.21	23,946
1988-89	1,367	14.2	218	3,100	2,312	788	8.62	26,727
1989-90	1,585	16.5	176	2,900	2,135	765	9.62	27,886
1990-91	1,638	16.9	219	3,700	2,787	913	8.76	32,423
1991-92	1,998	17.9	207	3,700	2,992	708	10.67	39,473
1992-93	2,295	20.0	240	4,800	3,537	1,263	4.85	23,268
1993-94	2,465	20.9	196	4,100	3,123	977	7.75	31,788
1994-95	2,749	22.9	253	5,800	3,748	2,052	3.78	21,900
1995-96	2,963	24.1	216	5,200	3,406	1,794	4.63	24,051
1996-97	3,160	25.7	249	6,400	4,291	2,109	3.73	23,866
1997-98	3,001	23.9	264	6,300	4,154	2,146	3.20	20,172
1998-99	2,989	23.6	212	5,000	3,629	1,371	7.34	36,718
1999-00	2,850	22.5	240	5,400	3,591	1,809	4.40	23,759
2000-01	2,752	21.6	236	5,100	3,676	1,424	3.10	15,830
2001-02	2,439	19.2	286	5,500	3,920	1,580	4.19	23,032
2002-03	2,313	18.2	297	5,400	3,882	1,518	4.93	26,597
2003-04	2,014	15.7	274	4,300	3,112	1,188	4.26	18,302
2004-05	1,784	13.7	182	2,500	2,017	483	9.68	24,191
2005-06	1,525	11.8	322	3,800	2,861	939	5.65	21,476
2006-07	1,388	10.8	264	2,850	2,228	622	10.54	30,035

^{1/} 2006-07 preliminary.

FLORIDA CITRUS: Trees, acreage, yield, production, utilization, season average price, and value
for crop years 1987-88 through 2006-07 ^{1/}

Crop year	Bearing trees	Bearing acreage	Yield per acre	Utilization of production			On-tree	
				Total	Fresh	Processed	Price per box	Value of production
	<i>1,000 trees</i>	<i>1,000 acres</i>	<i>Boxes</i>	<i>1,000 boxes</i>			<i>Dollars</i>	<i>1,000 dollars</i>
ALL GRAPEFRUIT								
1987-88	8,655	106.0	508	53,850	23,110	30,740	5.57	299,887
1988-89	8,807	106.9	512	54,750	23,902	30,848	4.45	243,874
1989-90	8,748	103.0	347	35,700	13,344	22,356	5.65	201,756
1990-91	9,026	104.2	433	45,100	23,923	21,177	5.66	255,328
1991-92	9,557	104.7	405	42,400	22,841	19,559	6.62	280,629
1992-93	10,546	111.9	493	55,150	23,154	31,996	2.66	146,432
1993-94	11,514	118.3	432	51,050	22,502	28,548	3.28	167,211
1994-95	12,660	127.3	438	55,700	22,239	33,461	2.09	116,602
1995-96	13,633	132.8	394	^{2/} 52,350	22,843	29,507	1.93	101,140
1996-97	14,189	139.2	401	^{2/} 55,800	23,237	32,563	1.55	86,583
1997-98	13,470	127.8	388	^{2/} 49,550	21,160	28,390	1.27	63,000
1998-99	12,431	116.6	404	47,050	19,921	27,129	2.30	108,411
1999-00	12,204	114.1	468	53,400	18,217	35,183	3.53	188,332
2000-01	11,656	107.8	427	^{2/} 46,000	17,490	28,510	2.19	100,869
2001-02	10,870	101.3	461	46,700	17,394	29,306	2.31	107,653
2002-03	10,296	95.5	405	38,700	15,589	23,111	2.44	94,518
2003-04	8,968	82.3	497	40,900	16,657	24,243	3.33	136,295
2004-05	7,791	71.0	180	12,800	7,419	5,381	13.47	172,365
2005-06	6,543	59.8	323	19,300	6,914	12,386	7.75	149,655
2006-07	6,315	57.4	474	27,200	10,962	16,238	4.03	109,745
SEEDY GRAPEFRUIT ^{3/}								
1987-88	622	8.9	309	2,750	^{4/}	2,750	4.99	13,723
1988-89	612	8.7	385	3,350	^{4/}	3,350	3.68	12,328
1989-90	529	7.1	197	1,400	^{4/}	1,400	3.84	5,376
1990-91	457	6.1	262	1,600	^{4/}	1,600	3.93	6,288
1991-92	396	4.9	245	1,200	^{4/}	1,200	4.57	5,484
1992-93	403	5.0	350	1,750	^{4/}	1,750	1.88	3,290
1993-94	386	4.7	223	1,050	^{4/}	1,050	1.78	1,869
1994-95	384	4.6	283	1,300	^{4/}	1,300	2.03	2,639
1995-96	370	4.3	244	1,050	^{4/}	1,050	1.73	1,817
1996-97	364	4.4	205	900	^{4/}	900	0.13	117
1997-98	296	3.4	191	650	^{4/}	650	0.10	65
1998-99	231	2.6	212	550	^{4/}	550	0.79	435
1999-00	214	2.4	250	600	^{4/}	600	2.96	1,776
2000-01	--	--	--	--	--	--	--	--
2001-02	--	--	--	--	--	--	--	--
2002-03	--	--	--	--	--	--	--	--
2003-04	--	--	--	--	--	--	--	--
2004-05	--	--	--	--	--	--	--	--
2005-06	--	--	--	--	--	--	--	--
2006-07	--	--	--	--	--	--	--	--

^{1/} 2006-07 preliminary.

^{2/} Excludes economic abandonment in 1995-96 of 3.0 million boxes of colored seedless; in 1996-97 of 3.0 million boxes of white seedless and 3.0 million boxes of colored seedless; in 1997-98 of 5.0 million boxes of white seedless and 1.0 million boxes of colored seedless; and in 2000-01 of 2.0 million boxes of colored seedless.

^{3/} Seedy estimates discontinued after 1999-2000 crop. Included with white seedless beginning with the 2000-01 crop.

^{4/} Fresh sales negligible.

FLORIDA CITRUS: Trees, acreage, yield, production, utilization, season average price, and value
for crop years 1987-88 through 2006-07 ^{1/}

Crop year	Bearing trees	Bearing acreage	Yield per acre	Utilization of production			On-tree	
				Total	Fresh	Processed	Price per box	Value of production
	<i>1,000 trees</i>	<i>1,000 acres</i>	<i>Boxes</i>	<i>1,000 boxes</i>			<i>Dollars</i>	<i>1,000 dollars</i>
WHITE GRAPEFRUIT ^{2/}								
1987-88	4,126	51.6	566	29,200	8,020	21,180	5.35	156,360
1988-89	4,092	51.1	542	27,700	8,033	19,667	4.33	119,980
1989-90	3,942	48.2	373	18,000	4,054	13,946	5.21	93,737
1990-91	3,888	47.4	458	21,700	8,191	13,509	4.59	99,622
1991-92	3,844	44.9	425	19,100	6,754	12,346	6.46	123,337
1992-93	4,191	47.4	542	25,700	6,087	19,613	2.22	56,973
1993-94	4,554	49.7	493	24,500	6,459	18,041	3.23	79,254
1994-95	4,807	51.8	496	25,700	5,720	19,980	2.58	66,382
1995-96	5,039	52.6	441	23,200	5,862	17,338	2.14	49,726
1996-97	5,169	54.5	431	^{3/} 23,500	5,664	17,836	1.12	26,413
1997-98	4,888	49.6	369	^{4/} 18,300	4,791	13,509	0.93	16,995
1998-99	4,397	44.0	405	17,800	4,543	13,257	1.95	34,737
1999-00	4,336	43.1	485	20,900	4,271	16,629	3.87	80,848
2000-01	4,282	42.0	445	18,700	3,968	14,732	2.07	38,728
2001-02	4,142	40.8	463	18,900	3,530	15,370	1.96	37,073
2002-03	3,944	38.6	420	16,200	3,172	13,028	1.77	28,702
2003-04	3,247	31.3	508	15,900	3,273	12,627	1.94	30,862
2004-05	2,712	25.8	132	3,400	1,352	2,048	11.93	40,560
2005-06	2,214	21.3	305	6,500	1,433	5,067	7.47	48,544
2006-07	2,083	19.9	467	9,300	1,961	7,339	2.36	21,910
COLORED GRAPEFRUIT								
1987-88	3,907	45.5	481	21,900	15,090	6,810	5.93	129,804
1988-89	4,103	47.1	503	23,700	15,869	7,831	4.71	111,566
1989-90	4,277	47.7	342	16,300	9,290	7,010	6.30	102,643
1990-91	4,681	50.7	430	21,800	15,732	6,068	6.85	149,418
1991-92	5,317	54.9	403	22,100	16,087	6,013	6.87	151,808
1992-93	5,952	59.5	466	27,700	17,067	10,633	3.11	86,169
1993-94	6,574	63.9	399	25,500	16,043	9,457	3.38	86,088
1994-95	7,469	70.9	405	28,700	16,519	12,181	1.66	47,581
1995-96	8,224	75.9	370	^{3/} 28,100	16,981	11,119	1.77	49,597
1996-97	8,656	80.3	391	^{3/} 31,400	17,573	13,827	1.91	60,053
1997-98	8,286	74.8	409	^{5/} 30,600	16,369	14,231	1.50	45,940
1998-99	7,803	70.0	410	28,700	15,378	13,322	2.55	73,239
1999-00	7,654	68.6	465	31,900	13,946	17,954	3.31	105,708
2000-01	7,374	65.8	415	^{6/} 27,300	13,522	13,778	2.28	62,141
2001-02	6,728	60.5	460	27,800	13,864	13,936	2.54	70,580
2002-03	6,352	56.9	395	22,500	12,417	10,083	2.93	65,816
2003-04	5,721	51.0	490	25,000	13,384	11,616	4.22	105,433
2004-05	5,079	45.2	208	9,400	6,067	3,333	14.02	131,805
2005-06	4,329	38.5	332	12,800	5,481	7,319	7.90	101,111
2006-07	4,232	37.5	477	17,900	9,001	8,899	4.91	87,835

^{1/} 2006-07 preliminary.

^{2/} Includes seedy grapefruit beginning with the 2000-01 crop.

^{3/} Excludes 3.0 million boxes of economic abandonment.

^{4/} Excludes 5.0 million boxes of economic abandonment.

^{5/} Excludes 1.0 million boxes of economic abandonment.

^{6/} Excludes 2.0 million boxes of economic abandonment.

**FLORIDA GRAPEFRUIT: Production by types, by areas of production,
for crop years 1997-98 through 2006-07 ^{1/}**

Crop year	White ^{2/}			Colored			Seedy		
	State	Interior	Indian River	State	Interior	Indian River	State	Interior	Indian River
	<i>1,000 boxes</i>								
1997-98	^{3/} 18,300	6,200	12,100	^{4/} 30,600	9,600	21,000	650	550	100
1998-99	17,800	5,100	12,700	28,700	9,900	18,800	550	500	50
1999-00	20,900	6,600	14,300	31,900	11,500	20,400	600	500	100
2000-01	18,700	5,800	12,900	^{5/} 27,300	9,500	17,800	--	--	--
2001-02	18,900	6,700	12,200	27,800	8,600	19,200	--	--	--
2002-03	16,200	6,000	10,200	22,500	8,600	13,900	--	--	--
2003-04	15,900	4,500	11,400	25,000	8,800	16,200	--	--	--
2004-05	3,400	2,200	1,200	9,400	5,800	3,600	--	--	--
2005-06	6,500	2,900	3,600	12,800	4,800	8,000	--	--	--
2006-07	9,300	2,600	6,700	17,900	5,100	12,800	--	--	--

^{1/} 2006-07 preliminary.

^{2/} Includes seedy grapefruit beginning with the 2000-01 crop.

^{3/} Excludes 5.0 million boxes of economic abandonment.

^{4/} Excludes 1.0 million boxes of economic abandonment.

^{5/} Excludes 2.0 million boxes of economic abandonment.

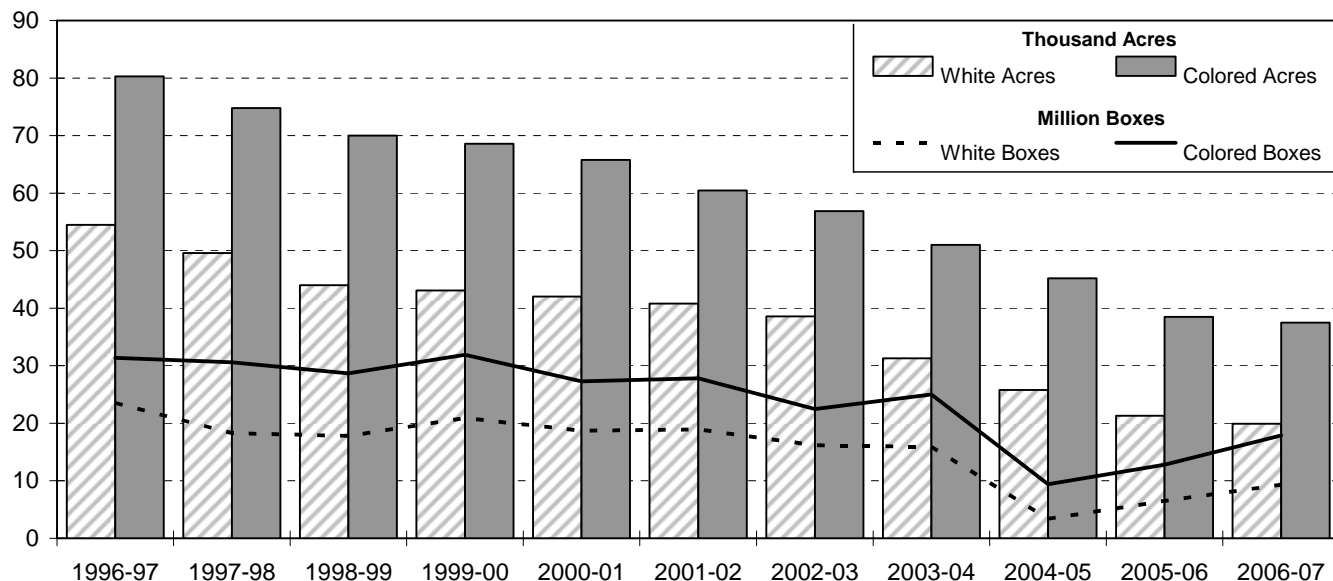
**FLORIDA GRAPEFRUIT: Season average on-tree prices per box, by utilization of sales and
areas of production, by types, for crop years 2001-02 through 2006-07 ^{1/}**

Crop year and area	White ^{2/}			Colored		
	Fresh	Processing	All sales	Fresh	Processing	All sales
	<i>Dollars</i>					
2001-02						
Interior	8.00	1.30	1.77	5.70	0.57	2.32
Indian River	6.30	0.64	2.06	4.70	-0.11	2.63
State average	6.54	0.91	1.96	4.92	0.17	2.54
2002-03						
Interior	4.80	0.88	1.04	4.60	0.58	2.32
Indian River	7.85	-0.05	2.22	5.35	-0.13	3.30
State average	7.57	0.36	1.77	5.13	0.21	2.93
2003-04						
Interior	7.00	1.00	1.18	6.25	1.13	2.67
Indian River	7.50	0.24	2.24	7.55	0.23	5.08
State average	7.50	0.50	1.94	7.27	0.70	4.22
2004-05						
Interior	21.20	6.03	10.69	18.35	4.75	13.29
Indian River	21.35	4.85	14.15	20.15	4.77	15.14
State average	21.32	5.73	11.93	19.11	4.76	14.02
2005-06						
Interior	14.30	5.72	6.10	12.90	4.54	6.74
Indian River	16.30	4.19	8.58	13.50	3.06	8.57
State average	16.09	5.03	7.47	13.40	3.78	7.90
2006-07						
Interior	11.15	1.03	1.70	10.10	0.60	4.61
Indian River	8.80	0.35	2.60	9.45	-0.07	5.02
State average	9.04	0.57	2.36	9.61	0.15	4.91

^{1/} 2006-07 preliminary.

^{2/} Includes seedy grapefruit.

**FLORIDA GRAPEFRUIT: Bearing acreage and production by variety,
1996-97 through 2006-07**



Note: White grapefruit includes seedy grapefruit beginning with the 2001-02 crop.

FLORIDA CITRUS: Trees, acreage, yield, production, utilization, season average price, and value for crop years 1987-88 through 2006-07 ^{1/}

Crop year	Bearing trees <i>1,000 trees</i>	Bearing acreage <i>1,000 acres</i>	Yield per acre <i>Boxes</i>	Utilization of production			On-tree	
				Total	Fresh	Processed	Price per box <i>Dollars</i>	Value of production <i>1,000 dollars</i>
				<i>1,000 boxes</i>				
TANGELOS								
1987-88	887	9.4	447	4,200	1,395	2,805	5.58	23,435
1988-89	904	9.5	400	3,800	1,348	2,452	6.31	23,994
1989-90	873	8.9	331	2,950	1,118	1,832	5.10	15,046
1990-91	815	8.0	331	2,650	1,186	1,464	6.11	16,203
1991-92	1,050	9.8	265	2,600	1,307	1,293	7.16	18,618
1992-93	1,161	10.5	290	3,050	1,316	1,734	3.31	10,092
1993-94	1,311	11.3	296	3,350	1,097	2,253	2.38	7,976
1994-95	1,458	12.4	254	3,150	1,106	2,044	2.64	8,318
1995-96	1,528	12.7	193	2,450	1,018	1,432	3.63	8,883
1996-97	1,561	13.3	297	3,950	1,032	2,918	2.19	8,645
1997-98	1,487	12.2	234	2,850	913	1,937	1.66	4,723
1998-99	1,439	11.7	218	2,550	838	1,712	4.53	11,560
1999-00	1,382	11.3	195	2,200	736	1,464	2.52	5,549
2000-01	1,338	10.8	194	2,100	742	1,358	1.27	2,671
2001-02	1,211	9.7	222	2,150	696	1,454	2.47	5,307
2002-03	1,151	9.1	258	2,350	608	1,742	2.60	6,114
2003-04	1,052	8.0	125	1,000	545	455	7.48	7,484
2004-05	814	6.4	242	1,550	495	1,055	2.45	3,794
2005-06	828	6.3	222	1,400	547	853	5.37	7,512
2006-07	704	5.5	227	1,250	428	822	8.24	10,298

^{1/} 2006-07 preliminary.

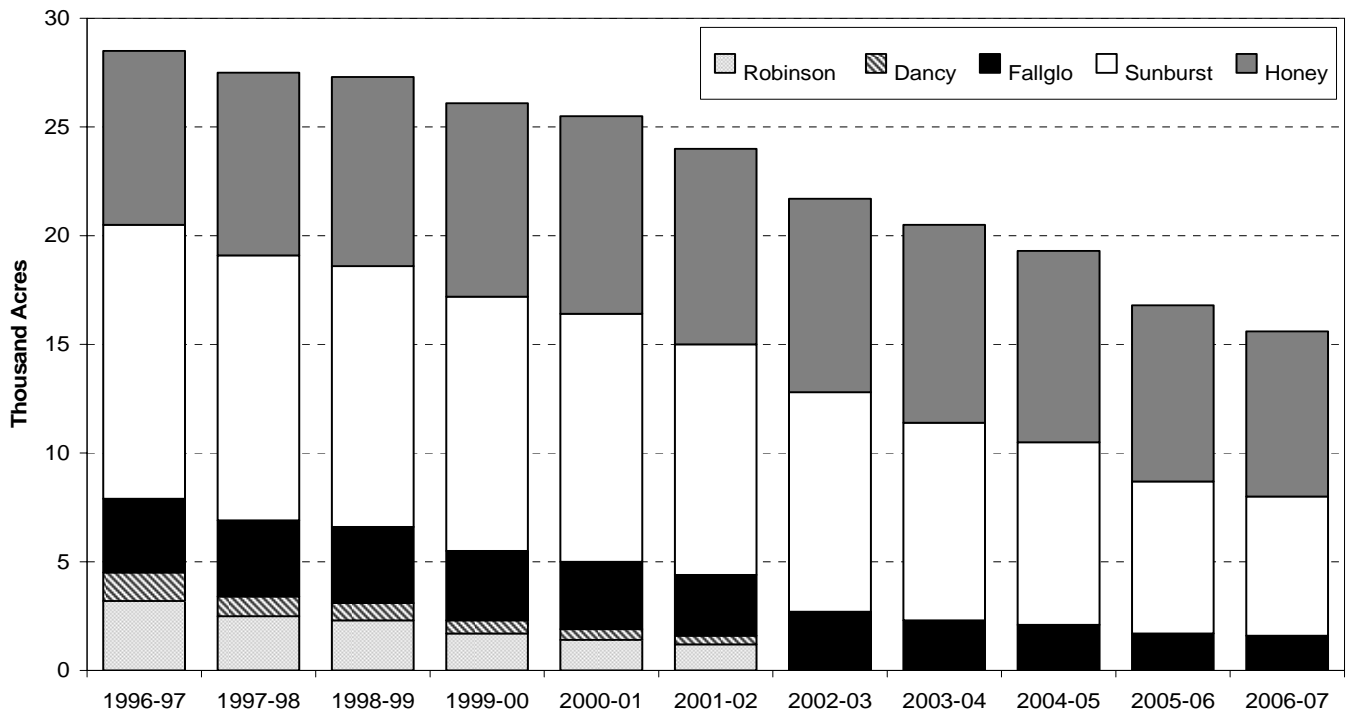
FLORIDA CITRUS: Trees, acreage, yield, production, utilization, season average price, and value
crop years 1987-88 through 2006-07 ^{1/}

Crop year	Bearing trees <i>1,000 trees</i>	Bearing acreage <i>1,000 acres</i>	Yield per acre <i>Boxes</i>	Utilization of production			On-tree	
				Total	Fresh	Processed	Price per box <i>Dollars</i>	Value of production <i>1,000 dollars</i>
				<i>1,000 boxes</i>				
ALL TANGERINES ^{2/}								
1987-88	796	7.6	322	2,450	1,614	836	12.99	31,831
1988-89	794	7.7	377	2,900	1,639	1,261	12.64	36,652
1989-90	946	8.5	200	1,700	999	701	15.28	25,981
1990-91	1,021	8.7	224	1,950	1,227	723	17.10	33,349
1991-92	1,403	11.3	230	2,600	1,965	635	18.00	46,797
1992-93	1,781	13.7	204	2,800	2,065	735	13.75	38,503
1993-94	2,269	16.4	250	4,100	2,985	1,115	9.83	40,303
1994-95	2,831	20.1	177	3,550	2,662	888	11.98	42,539
1995-96	3,536	24.3	185	4,500	3,144	1,356	12.59	56,646
1996-97	4,330	28.5	221	6,300	3,757	2,543	7.99	50,343
1997-98	4,130	27.5	189	5,200	3,428	1,772	8.49	44,126
1998-99	4,149	27.3	181	4,950	3,570	1,380	12.07	59,763
1999-00	3,943	26.1	268	7,000	4,420	2,580	6.66	46,622
2000-01	3,888	25.5	220	5,600	3,755	1,845	6.40	35,867
2001-02	3,638	24.0	275	6,600	4,214	2,386	7.81	51,554
2002-03	3,316	21.7	253	5,500	3,914	1,586	8.40	46,217
2003-04	3,108	20.5	317	6,500	4,440	2,060	7.46	48,464
2004-05	2,921	19.3	231	4,450	3,318	1,132	12.02	53,503
2005-06	2,535	16.8	327	5,500	3,608	1,892	9.44	51,907
2006-07	2,327	15.6	295	4,600	3,072	1,528	12.64	58,152

^{1/} 2006-07 preliminary.

^{2/} Sunburst tangerines included beginning in 1989-90. Fallglo tangerines included beginning in 1993-94. Dancy and Robinson estimates discontinued after 2001-02.

FLORIDA TANGERINES: Bearing acreage by variety, 1996-97 through 2006-07



NOTE: Dancy and Robinson varieties included through 2001-02

FLORIDA CITRUS: Trees, acreage, yield, production, utilization, season average price, and value
 crop years 1987-88 through 2006-07 ¹

Crop year	Bearing trees	Bearing acreage	Yield per acre	Utilization of production			On-tree	
				Total	Fresh	Processed	Price per box	Value of production
	<i>1,000 trees</i>	<i>1,000 acres</i>	<i>Boxes</i>	<i>1,000 boxes</i>			<i>Dollars</i>	<i>1,000 dollars</i>
EARLY TANGERINES ^{2/}								
1987-88	343	3.5	371	1,300	828	472	12.65	16,447
1988-89	344	3.6	389	1,400	848	552	12.56	17,577
1989-90	453	4.2	252	1,060	792	268	16.68	17,679
1990-91	515	4.4	193	850	529	321	15.78	13,429
1991-92	832	6.5	205	1,330	1,000	330	18.39	24,479
1992-93	1,107	8.4	167	1,400	1,091	309	14.35	20,090
1993-94	1,522	10.8	219	2,370	1,715	655	9.76	23,140
1994-95	2,022	14.1	167	2,350	1,794	556	7.95	18,691
1995-96	2,542	17.3	168	2,900	2,025	875	10.76	31,200
1996-97	3,150	20.5	220	4,500	2,713	1,787	6.28	28,260
1997-98	2,882	19.1	168	3,200	2,060	1,140	6.72	21,504
1998-99	2,837	18.6	164	3,050	2,172	878	10.03	30,601
1999-00	2,606	17.2	253	4,350	2,630	1,720	6.15	26,739
2000-01	2,518	16.4	216	3,550	2,475	1,075	4.93	17,490
2001-02	2,285	15.0	290	4,350	2,790	1,560	6.93	30,156
2002-03	1,969	12.8	234	3,000	2,110	890	8.39	25,163
2003-04	1,725	11.4	316	3,600	2,307	1,293	6.15	22,142
2004-05	1,579	10.5	233	2,450	1,814	636	10.12	24,785
2005-06	1,301	8.7	328	2,850	1,913	937	10.40	29,640
2006-07	1,185	8.0	300	2,400	1,661	739	12.01	28,820
HONEY TANGERINES								
1987-88	453	4.1	280	1,150	786	364	13.41	15,424
1988-89	450	4.1	366	1,500	791	709	12.73	19,097
1989-90	493	4.3	149	640	207	433	13.02	8,332
1990-91	506	4.3	256	1,100	698	402	18.07	19,881
1991-92	571	4.8	265	1,270	965	305	17.59	22,344
1992-93	674	5.3	264	1,400	974	426	13.17	18,433
1993-94	747	5.6	309	1,730	1,270	460	9.90	17,131
1994-95	809	6.0	200	1,200	868	332	19.76	23,716
1995-96	994	7.0	229	1,600	1,119	481	15.16	24,262
1996-97	1,180	8.0	225	1,800	1,044	756	12.18	21,929
1997-98	1,248	8.4	238	2,000	1,368	632	11.34	22,679
1998-99	1,312	8.7	218	1,900	1,398	502	15.32	29,113
1999-00	1,337	8.9	298	2,650	1,790	860	7.45	19,734
2000-01	1,370	9.1	225	2,050	1,280	770	9.05	18,545
2001-02	1,353	9.0	250	2,250	1,424	826	9.61	21,612
2002-03	1,347	8.9	281	2,500	1,804	696	8.36	20,897
2003-04	1,383	9.1	319	2,900	2,133	767	9.16	26,575
2004-05	1,342	8.8	227	2,000	1,504	496	14.36	28,727
2005-06	1,234	8.1	327	2,650	1,695	955	8.45	22,391
2006-07	1,142	7.6	289	2,200	1,411	789	13.27	29,200

^{1/} 2006-07 preliminary.

^{2/} Dancy and Robinson varieties discontinued after 2001-02; Sunburst included beginning in 1989-90; and Fallglo included beginning in 1993-94.

FLORIDA CITRUS: Trees, acreage, yield, production, utilization, season average price, and value
 crop years 1987-88 through 2006-07 ^{1/}

Crop year	Bearing trees	Bearing acreage	Yield per acre	Utilization of production			On-tree	
				Total	Fresh	Processed	Price per box	Value of production
	<i>1,000 trees</i>	<i>1,000 acres</i>	<i>Boxes</i>	<i>1,000 boxes</i>			<i>Dollars</i>	<i>1,000 dollars</i>
LIMES								
1987-88	1,100	7.0	186	1,300	860	440	12.69	16,493
1988-89	1,036	6.6	189	1,250	950	300	11.29	14,112
1989-90	1,040	6.7	246	1,650	1,010	640	8.26	13,634
1990-91	967	6.2	234	1,450	930	520	13.99	20,289
1991-92	983	6.3	254	1,600	1,070	530	9.12	14,589
1992-93 ^{2/}	983	6.3	159	1,000	730	270	1.02	1,017
1993-94	295	1.9	105	200	150	50	12.70	2,540
1994-95	256	1.9	121	230	190	40	8.65	1,989
1995-96	294	2.0	150	300	240	60	8.05	2,414
1996-97	323	2.1	152	320	255	65	6.93	2,216
1997-98	410	2.7	163	440	330	110	6.90	3,035
1998-99	427	2.7	185	500	410	90	12.83	6,413
1999-00	473	2.8	214	600	500	100	11.21	6,728
2000-01	184	1.2	208	250	220	30	12.00	2,999
2001-02	135	0.8	188	150	125	25	6.19	929
2002-03 ^{3/}	--	--	--	--	--	--	--	--
2003-04	--	--	--	--	--	--	--	--
2004-05	--	--	--	--	--	--	--	--
2005-06	--	--	--	--	--	--	--	--
2006-07	--	--	--	--	--	--	--	--
TEMPLES ^{4/}								
1987-88	862	9.3	382	3,550	1,292	2,258	5.69	20,196
1988-89	859	9.3	403	3,750	869	2,881	5.46	20,474
1989-90	776	8.0	175	1,400	139	1,261	5.64	7,889
1990-91	744	7.7	325	2,500	794	1,706	6.31	15,786
1991-92	720	7.1	331	2,350	848	1,502	6.51	15,289
1992-93	744	7.3	342	2,500	947	1,553	2.99	7,475
1993-94	689	6.7	336	2,250	785	1,465	2.73	6,136
1994-95	695	6.8	375	2,550	786	1,764	3.47	8,848
1995-96	691	6.6	326	2,150	693	1,457	4.44	9,543
1996-97	689	6.7	358	2,400	555	1,845	3.22	7,723
1997-98	675	6.2	363	2,250	566	1,684	3.07	6,898
1998-99	672	6.0	300	1,800	593	1,207	5.12	9,208
1999-00	649	5.8	336	1,950	440	1,510	2.55	4,971
2000-01	637	5.5	227	1,250	343	907	2.05	2,565
2001-02	552	4.7	330	1,550	418	1,132	2.19	3,395
2002-03	509	4.2	310	1,300	305	995	2.01	2,615
2003-04	393	3.4	412	1,400	342	1,058	1.07	1,502
2004-05	332	2.9	224	650	213	437	2.48	1,615
2005-06	289	2.5	280	700	209	491	3.16	2,214
2006-07	--	--	--	--	--	--	--	--

^{1/} 2006-07 preliminary.

^{2/} Hurricane Andrew August 24, 1992.

^{3/} Estimates discontinued.

^{4/} Included in early-midseason-Navel oranges in 2006-07.

FLORIDA CITRUS PRODUCTS: Annual packs of citrus, FCOJ yield, and all citrus feeds, crop years 1992-93 through 2006-07

Crop year	Orange juice ^{1/}							
	Concentrated ^{2/}					Chilled		Other processed ^{3/}
	Product	Boxes used	Yield			Product	Boxes used	Boxes used
			All	Early-mid	Late			
1,000 gallons	1,000 boxes	Gallons per box			1,000 gallons	1,000 boxes	1,000 boxes	
1992-93	208,662	132,154	1.57893	1.52480	1.68686	NA	NA	355
1993-94	182,231	116,248	1.56760	1.52073	1.65942	311,120	51,015	225
1994-95	216,502	144,678	1.49644	1.44400	1.58230	326,658	53,410	289
1995-96	202,353	132,907	1.52252	1.44775	1.66979	384,124	62,146	224
1996-97	241,800	153,842	1.57174	1.52360	1.67701	400,279	65,676	842
1997-98	253,734	160,865	1.57731	1.49255	1.71525	452,074	74,767	989
1998-99	158,884	97,247	1.63381	1.58414	1.74806	505,506	80,112	756
1999-00	207,708	134,204	1.54770	1.47574	1.66336	558,821	90,085	2,387
2000-01	196,055	124,072	1.58018	1.54073	1.64573	543,284	89,564	2,246
2001-02	215,057	135,975	1.58160	1.52774	1.65789	531,274	85,869	1,385
2002-03	156,845	102,073	1.53659	1.49199	1.60587	561,687	92,506	1,445
2003-04	218,296	139,727	1.55656	1.44560	1.69155	559,077	93,393	500
2004-05	85,998	54,322	1.58311	1.52920	1.67671	556,941	88,514	1,059
2005-06	84,600	51,873	1.62745	1.52690	1.75268	575,057	88,662	1,195
2006-07	79,054	47,996	1.64668	1.55547	1.77415	487,011	74,523	865

Crop year	Grapefruit juice					Tangerine juice			All Citrus	
	Concentrated ^{4/}		Chilled		Other ^{3/} processed	Concentrated ^{2/}		Other ^{3/ 5/} processed	Feed	Molasses
	Product	Boxes used	Product	Boxes used	Boxes used	Product	Boxes used	Boxes used		
	1,000 gallons	1,000 boxes	1,000 gallons	1,000 boxes	1,000 boxes	1,000 gallons	1,000 boxes	1,000 boxes	1,000 Tons	
1992-93	31,527	26,595	23,086	4,466	548	329	187	0	874	31
1993-94	26,485	22,324	29,307	5,711	289	529	335	0	832	25
1994-95	31,344	27,343	29,310	5,557	303	1,192	832	0	941	26
1995-96	26,930	22,993	31,900	6,147	135	5,819	699	0	928	27
1996-97	30,032	24,981	37,209	7,135	447	2,386	1,470	1,073	1,071	34
1997-98	24,223	20,578	36,295	7,225	587	1,461	929	843	1,137	28
1998-99	24,512	19,050	39,375	7,516	563	1,191	702	678	851	20
1999-00	28,642	24,070	51,780	10,397	716	1,646	982	1,598	1,370	31
2000-01	27,207	21,201	32,877	6,362	947	852	552	1,293	1,011	32
2001-02	27,294	21,686	33,613	6,414	1,206	1,758	1,174	1,212	1,027	30
2002-03	19,375	15,958	32,434	6,221	932	1,457	971	615	844	16
2003-04	20,897	17,186	34,275	6,586	471	1,263	829	1,231	1,131	38
2004-05	3,057	2,466	16,010	2,763	152	704	482	650	600	54
2005-06	9,717	8,002	21,960	4,122	262	525	341	1,551	557	31
2006-07	15,782	11,560	26,602	4,425	253	446	303	1,225	527	38

^{1/} Includes Tangelos and Temples. K-Early Citrus Fruit included through 2001-02.

^{2/} 42.0 degrees Brix.

^{3/} Prior to 1996-97, canned and blended juice only. Since 1996-97 includes sections and salads, canned, fresh squeezed, and blends. Tangerines may include chilled.

^{4/} 40.0 degrees Brix.

^{5/} Used primarily in FCOJ.

SOURCE: See Page 47, Data Sources, Item 3

**ORANGES: Utilization, season average on-tree price, and value by types, by states,
crop years 2002-03 through 2006-07 ^{1/}**

Crop year	Utilization of production			Price per box			Value of production		
	Fresh	Proc	Total	Fresh	Proc	Total	Fresh	Proc	Total
	<i>1,000 boxes</i>			<i>Dollars per box</i>			<i>1,000 dollars</i>		
UNITED STATES ORANGES									
2002-03	61,040	206,000	267,040	6.52	2.79	3.56	400,187	564,984	965,171
2003-04	55,930	238,690	294,620	8.63	2.74	3.74	493,089	650,179	1,143,268
2004-05	58,162	158,338	216,500	9.24	2.86	4.41	541,149	440,744	981,893
2005-06	52,820	157,930	210,750	10.31	4.89	6.11	551,671	754,823	1,306,494
2006-07	34,392	141,888	176,280	15.95	7.82	9.26	552,447	1,080,990	1,633,437
FLORIDA ORANGES ^{2/}									
2002-03	9,713	193,287	203,000	5.61	3.05	3.17	54,527	589,277	643,804
2003-04	9,893	232,107	242,000	3.87	2.85	2.89	38,302	661,625	699,927
2004-05	7,397	142,403	149,800	6.87	3.31	3.49	50,828	472,064	522,892
2005-06	7,314	140,386	147,700	5.80	5.49	5.51	42,445	770,877	813,322
2006-07	6,438	122,562	129,000	13.27	8.97	9.18	85,410	1,098,822	1,184,232
CALIFORNIA ORANGES									
2002-03	49,800	12,200	62,000	6.84	-2.04	5.09	340,592	-24,900	315,692
2003-04	44,500	6,000	50,500	10.08	-1.97	8.65	448,748	-11,848	436,900
2004-05	49,200	15,300	64,500	9.75	-2.06	6.95	479,480	-31,506	447,974
2005-06	44,000	17,000	61,000	11.36	-0.97	7.92	499,810	-16,475	483,335
2006-07	26,300	18,700	45,000	16.90	-0.99	9.47	444,459	-18,510	425,949
TEXAS ORANGES									
2002-03	1,128	442	1,570	3.44	1.70	2.95	3,875	751	4,626
2003-04	1,169	481	1,650	3.66	1.25	2.96	4,281	602	4,883
2004-05	1,232	538	1,770	7.47	0.71	5.41	9,198	382	9,580
2005-06	1,270	330	1,600	6.09	1.94	5.23	7,731	640	8,371
2006-07	1,472	508	1,980	13.98	1.55	10.79	20,580	788	21,368
ARIZONA ORANGES									
2002-03	399	71	470	2.99	-2.03	2.23	1,193	-144	1,049
2003-04	368	102	470	4.78	-1.96	3.31	1,758	-200	1,558
2004-05	333	97	430	4.93	-2.02	3.37	1,643	-196	1,447
2005-06	236	214	450	7.14	-1.02	3.26	1,685	-219	1,466
2006-07	182	118	300	10.98	-0.93	6.29	1,998	-110	1,888

^{1/} 2006-07 preliminary.

^{2/} Includes Temples in 2006-07

ORANGES: Utilization, season average on-tree price, and value by types, by states,
crop years 2002-03 through 2006-07 ^{1/}

Crop year	Utilization of production			Price per box			Value of production		
	Fresh	Proc	Total	Fresh	Proc	Total	Fresh	Proc	Total
	<i>1,000 boxes</i>			<i>Dollars per box</i>			<i>1,000 dollars</i>		
FLORIDA EARLY, MIDSEASON, AND NAVEL ORANGES ^{2/}									
2002-03	6,773	105,227	112,000	5.75	2.42	2.62	38,945	254,649	293,594
2003-04	5,615	120,385	126,000	4.65	2.09	2.20	26,110	251,605	277,715
2004-05	4,403	74,697	79,100	7.60	2.54	2.82	33,463	189,730	223,193
2005-06	4,896	70,104	75,000	6.20	4.60	4.70	30,355	322,478	352,833
2006-07	4,162	61,438	65,600	12.10	7.19	7.50	50,360	441,739	492,099
FLORIDA EARLY AND MIDSEASON ORANGES (EXCLUDING NAVELS) ^{2/}									
2002-03	2,891	103,709	106,600	3.75	2.46	2.49	10,841	255,124	265,965
2003-04	2,503	119,197	121,700	2.45	2.11	2.12	6,132	251,506	257,638
2004-05	2,386	74,214	76,600	3.60	2.55	2.58	8,590	189,246	197,836
2005-06	2,035	69,165	71,200	4.00	4.65	4.63	8,140	321,617	329,757
2006-07	1,934	60,816	62,750	11.90	7.21	7.35	23,015	438,483	461,498
FLORIDA NAVEL ORANGES									
2002-03	3,882	1,518	5,400	7.25	-1.02	4.93	28,145	-1,548	26,597
2003-04	3,112	1,188	4,300	6.45	-1.49	4.26	20,072	-1,770	18,302
2004-05	2,017	483	2,500	12.30	-1.28	9.68	24,809	-618	24,191
2005-06	2,861	939	3,800	7.70	-0.59	5.65	22,030	-554	21,476
2006-07	2,228	622	2,850	12.30	4.23	10.54	27,404	2,631	30,035
FLORIDA LATE (VALENCIA) ORANGES									
2002-03	2,940	88,060	91,000	5.30	3.80	3.85	15,582	334,628	350,210
2003-04	4,278	111,722	116,000	2.85	3.67	3.64	12,192	410,020	422,212
2004-05	2,994	67,706	70,700	5.80	4.17	4.24	17,365	282,334	299,699
2005-06	2,418	70,282	72,700	5.00	6.38	6.33	12,090	448,399	460,489
2006-07	2,276	61,124	63,400	15.40	10.75	10.92	35,050	657,083	692,133
CALIFORNIA NAVEL AND MISCELLANEOUS ORANGES									
2002-03	34,000	8,000	42,000	7.35	-2.01	5.57	249,900	-16,080	233,820
2003-04	34,300	5,200	39,500	9.80	-1.96	8.25	336,140	-10,192	325,948
2004-05	33,700	10,300	44,000	10.30	-2.02	7.42	347,110	-20,806	326,304
2005-06	32,500	14,500	47,000	10.80	-0.95	7.18	351,000	-13,775	337,225
2006-07	20,000	14,000	34,000	16.89	-1.02	9.52	337,800	-14,280	323,520
CALIFORNIA VALENCIA ORANGES									
2002-03	15,800	4,200	20,000	5.74	-2.10	4.09	90,692	-8,820	81,872
2003-04	10,200	800	11,000	11.04	-2.07	10.09	112,608	-1,656	110,952
2004-05	15,500	5,000	20,500	8.54	-2.14	5.94	132,370	-10,700	121,670
2005-06	11,500	2,500	14,000	12.94	-1.08	10.44	148,810	-2,700	146,110
2006-07	6,300	4,700	11,000	16.93	-0.90	9.31	106,659	-4,230	102,429

^{1/} 2006-07 preliminary.

^{2/} Includes Temple oranges in 2006-07.

**GRAPEFRUIT: Utilization, season average on-tree price, and value by types, by states,
crop years 2002-03 through 2006-07 ^{1/}**

Crop year	Utilization of production			Price per box			Value of production		
	Fresh	Proc	Total	Fresh	Proc	Total	Fresh	Proc	Total
	<i>1,000 boxes</i>			<i>Dollars per box</i>			<i>1,000 dollars</i>		
UNITED STATES GRAPEFRUIT									
2002-03	23,930	26,150	50,080	6.33	0.18	3.03	155,872	4,281	160,153
2003-04	25,315	27,225	52,540	7.23	0.46	3.66	184,193	11,950	196,143
2004-05	16,084	9,556	25,640	18.79	2.83	12.65	298,803	25,653	324,456
2005-06	15,514	15,086	30,600	13.96	3.74	8.74	214,924	55,248	270,172
2006-07	18,024	20,376	38,400	9.95	0.37	4.77	180,274	7,182	187,456
FLORIDA GRAPEFRUIT									
2002-03	15,589	23,111	38,700	5.63	0.29	2.44	87,711	6,807	94,518
2003-04	16,657	24,243	40,900	7.32	0.60	3.33	121,850	14,445	136,295
2004-05	7,419	5,381	12,800	19.51	5.13	13.47	144,765	27,600	172,365
2005-06	6,914	12,386	19,300	13.96	4.29	7.75	96,502	53,153	149,655
2006-07	10,962	16,238	27,200	9.51	0.34	4.03	104,227	5,518	109,745
CALIFORNIA GRAPEFRUIT									
2002-03	4,900	700	5,600	10.96	-2.52	9.28	53,704	-1,764	51,940
2003-04	5,100	700	5,800	8.85	-3.01	7.42	45,135	-2,107	43,028
2004-05	5,400	700	6,100	15.52	-3.08	13.39	83,808	-2,156	81,652
2005-06	5,300	700	6,000	12.18	-3.15	10.39	64,554	-2,205	62,349
2006-07	3,500	500	4,000	11.04	-3.22	9.26	38,640	-1,610	37,030
TEXAS GRAPEFRUIT									
2002-03	3,317	2,333	5,650	4.14	-0.32	2.30	13,732	-747	12,985
2003-04	3,418	2,282	5,700	4.84	-0.17	2.83	16,543	-388	16,155
2004-05	3,125	3,475	6,600	22.02	0.06	10.46	68,813	209	69,022
2005-06	3,200	2,000	5,200	16.50	2.15	10.98	52,800	4,300	57,100
2006-07	3,462	3,638	7,100	10.57	0.90	5.62	36,593	3,274	39,867
ARIZONA GRAPEFRUIT									
2002-03	124	6	130	5.85	-2.53	5.46	725	-15	710
2003-04	140	0	140	4.75	0.00	4.75	665	0	665
2004-05	140	0	140	10.12	0.00	10.12	1,417	0	1,417
2005-06	100	0	100	10.68	0.00	10.68	1,068	0	1,068
2006-07	100	0	100	8.14	0.00	8.14	814	0	814

^{1/} 2006-07 preliminary.

TANGERINES: Utilization, season average on-tree price, and value by types, by states,
crop years 2002-03 through 2006-07 ^{1/}

Crop year	Utilization of production			Price per box			Value of production		
	Fresh	Proc	Total	Fresh	Proc	Total	Fresh	Proc	Total
	<i>1,000 boxes</i>			<i>Dollars per box</i>			<i>1,000 dollars</i>		
UNITED STATES TANGERINES									
2002-03	6,741	1,989	8,730	13.48	-0.95	10.06	92,271	-1,957	90,284
2003-04	6,845	2,545	9,390	12.18	-1.53	8.36	84,150	-4,050	80,100
2004-05	6,117	1,633	7,750	16.68	-0.26	13.01	102,744	-710	102,034
2005-06	6,661	2,989	9,650	15.46	0.12	10.64	104,788	-344	104,444
2006-07	5,450	2,350	7,800	19.12	3.25	14.27	106,737	6,550	113,287
FLORIDA ALL TANGERINES									
2002-03	3,914	1,586	5,500	12.10	-0.72	8.40	47,359	-1,142	46,217
2003-04	4,440	2,060	6,500	11.50	-1.26	7.46	51,060	-2,596	48,464
2004-05	3,318	1,132	4,450	15.90	0.66	12.02	52,756	747	53,503
2005-06	3,608	1,892	5,500	13.60	1.50	9.44	49,069	2,838	51,907
2006-07	3,072	1,528	4,600	16.00	5.89	12.64	49,152	9,000	58,152
FLORIDA EARLY TANGERINES ^{2/}									
2002-03	2,110	890	3,000	12.20	-0.65	8.39	25,742	-579	25,163
2003-04	2,307	1,293	3,600	10.50	-1.61	6.15	24,224	-2,082	22,142
2004-05	1,814	636	2,450	14.00	-0.96	10.12	25,396	-611	24,785
2005-06	1,913	937	2,850	15.70	-0.42	10.40	30,034	-394	29,640
2006-07	1,661	739	2,400	15.50	4.16	12.01	25,746	3,074	28,820
FLORIDA HONEY TANGERINES									
2002-03	1,804	696	2,500	11.90	-0.82	8.36	21,468	-571	20,897
2003-04	2,133	767	2,900	12.70	-0.67	9.16	27,089	-514	26,575
2004-05	1,504	496	2,000	18.20	2.73	14.36	27,373	1,354	28,727
2005-06	1,695	955	2,650	11.30	3.39	8.45	19,154	3,237	22,391
2006-07	1,411	789	2,200	16.50	7.50	13.27	23,282	5,918	29,200
CALIFORNIA TANGERINES									
2002-03	2,450	350	2,800	15.54	-2.01	13.35	38,073	-704	37,369
2003-04	1,939	261	2,200	14.03	-2.74	12.04	27,204	-715	26,489
2004-05	2,477	423	2,900	18.40	-2.82	15.30	45,577	-1,193	44,384
2005-06	2,696	904	3,600	18.66	-2.90	13.25	50,307	-2,622	47,685
2006-07	2,200	700	2,900	24.62	-2.98	17.96	54,164	-2,086	52,078
ARIZONA TANGERINES									
2002-03	377	53	430	18.14	-2.66	15.58	6,839	-141	6,698
2003-04	466	224	690	12.63	-3.30	7.46	5,886	-739	5,147
2004-05	322	78	400	13.70	-3.38	10.37	4,411	-264	4,147
2005-06	357	193	550	15.16	-2.90	8.82	5,412	-560	4,852
2006-07	178	122	300	19.22	-2.98	10.19	3,421	-364	3,057

^{1/} 2006-07 preliminary.

^{2/} Fallglo and Sunburst varieties.

**OTHER CITRUS: Utilization, season average on-tree price, and value by types, by states,
crop years 2002-03 through 2006-07 ^{1/}**

Crop year	Utilization of production			Price per box			Value of production		
	Fresh	Proc	Total	Fresh	Proc	Total	Fresh	Proc	Total
	<i>1,000 boxes</i>			<i>Dollars per box</i>			<i>1,000 dollars</i>		
FLORIDA TANGELOS									
2002-03	608	1,742	2,350	7.65	0.84	2.60	4,651	1,463	6,114
2003-04	545	455	1,000	13.85	-0.14	7.48	7,548	-64	7,484
2004-05	495	1,055	1,550	6.45	0.57	2.45	3,193	601	3,794
2005-06	547	853	1,400	12.50	0.79	5.37	6,838	674	7,512
2006-07	428	822	1,250	11.00	6.80	8.24	4,708	5,590	10,298
FLORIDA TEMPLES ^{2/}									
2002-03	305	995	1,300	3.65	1.51	2.01	1,113	1,502	2,615
2003-04	342	1,058	1,400	3.65	0.24	1.07	1,248	254	1,502
2004-05	213	437	650	4.05	1.72	2.48	863	752	1,615
2005-06	209	491	700	6.60	1.70	3.16	1,379	835	2,214
2006-07	--	--	--	--	--	--	--	--	--
UNITED STATES LEMONS									
2002-03	14,646	12,354	27,000	15.45	-4.04	6.53	226,315	-49,910	176,405
2003-04	14,208	6,792	21,000	14.19	-4.91	8.01	201,659	-33,349	168,310
2004-05	13,128	9,772	22,900	18.00	-5.03	8.17	236,279	-49,153	187,126
2005-06	18,054	7,746	25,800	17.58	-5.69	10.59	317,386	-44,046	273,340
2006-07	11,795	6,705	18,500	29.01	-5.84	16.38	342,219	-39,157	303,062
CALIFORNIA LEMONS									
2002-03	13,100	10,900	24,000	15.66	-4.04	6.66	203,836	-44,036	159,800
2003-04	12,200	5,800	18,000	14.90	-4.91	8.52	181,780	-28,478	153,302
2004-05	11,803	8,697	20,500	18.21	-5.03	8.35	214,933	-43,746	171,187
2005-06	15,887	6,113	22,000	18.42	-5.68	11.72	292,639	-34,722	257,917
2006-07	9,900	6,100	16,000	30.01	-5.84	16.34	297,099	-35,624	261,475
ARIZONA LEMONS									
2002-03	1,546	1,454	3,000	14.54	-4.04	5.54	22,479	-5,874	16,605
2003-04	2,008	992	3,000	9.90	-4.91	5.00	19,879	-4,871	15,008
2004-05	1,325	1,075	2,400	16.11	-5.03	6.64	21,346	-5,407	15,939
2005-06	2,167	1,633	3,800	11.42	-5.71	4.06	24,747	-9,324	15,423
2006-07	1,895	605	2,500	23.81	-5.84	16.63	45,120	-3,533	41,587

^{1/} 2006-07 preliminary.

^{2/} Included in early- midseason oranges in 2006-07.

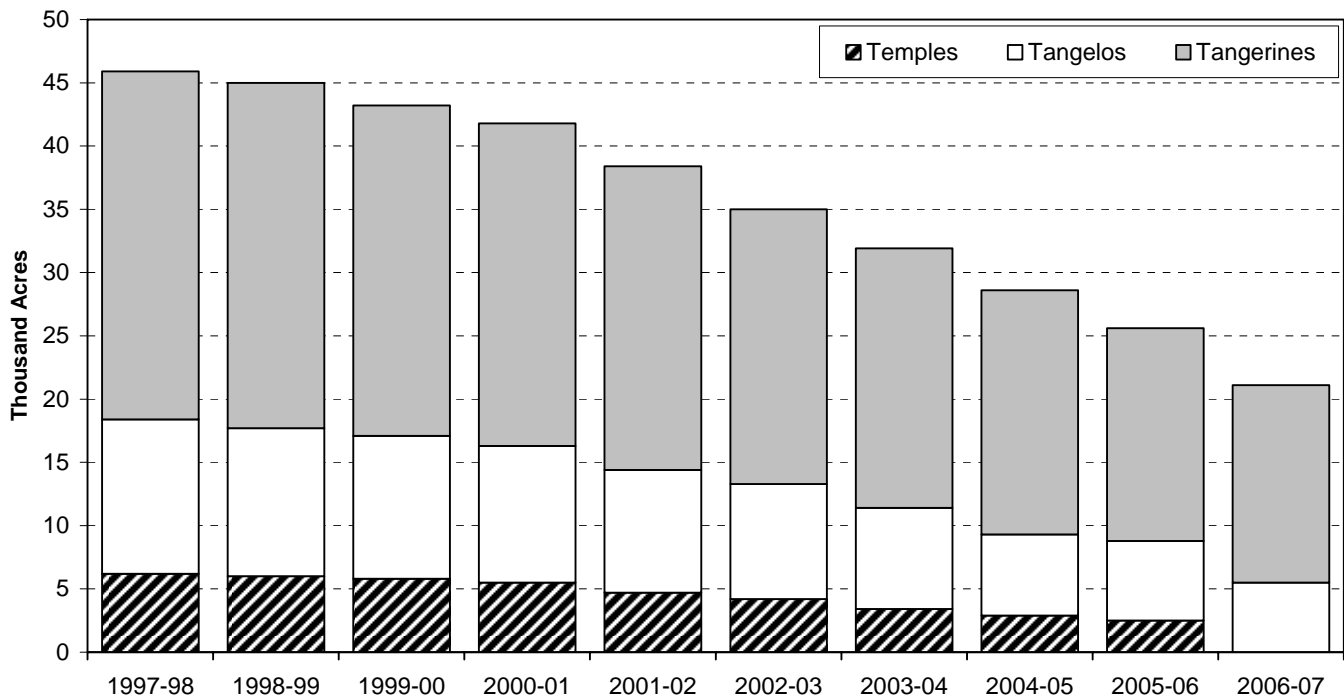
**FLORIDA LEMONS: Bearing acreage, production, season average on tree prices, and value,
crop years 1987 through 2006**

Crop year ^{1/}	True Lemons		Meyer Lemons		All Lemons			
	Bearing acreage	Production	Bearing acreage	Production	Bearing acreage	Production	Price per box	Value of production
	<i>1,000 acres</i>	<i>1,000 boxes</i>	<i>1,000 acres</i>	<i>1,000 Boxes</i>	<i>1,000 acres</i>	<i>1,000 boxes</i>	<i>Dollars</i>	<i>1,000 dollars</i>
1987	1.2	470	0.1	40	1.3	510	5.00	2,561
1988	1.1	433	0.1	47	1.2	480	5.30	2,548
1989	1.0	333	0.1	42	1.1	375	6.90	2,592
1990	0.9	210	0.1	40	1.0	250	6.80	1,697
1991	0.8	254	0.1	46	0.9	300	12.60	3,784
1992	0.6	215	0.1	40	0.7	255	6.15	1,565
1993	0.6	167	0.1	33	0.7	200	10.00	1,998
1994	0.6	188	0.1	32	0.7	220	7.60	1,677
1995	0.6	130	0.1	35	0.7	165	8.25	1,361
1996	0.7	170	0.1	25	0.8	195	10.30	2,006
1997	0.8	80	0.1	40	0.9	120	7.00	839
1998	0.9	155	0.1	80	1.0	235	6.45	1,516
1999	1.0	140	0.1	30	1.1	170	1.20	201
2000	0.9	240	0.1	25	1.0	265	3.50	921
2001	0.8	68	0.1	17	0.9	85	3.50	299
2002	0.7	150	0.1	5	0.8	155	13.30	2,061
2003 ^{2/}	--	--	--	--	--	--	--	--
2004	--	--	--	--	--	--	--	--
2005	--	--	--	--	--	--	--	--
2006	--	--	--	--	--	--	--	--

^{1/} Crop year corresponds to calendar year.

^{2/} Estimates discontinued.

**FLORIDA SPECIALTY FRUIT: Bearing acreage by variety,
1997-98 through 2006-07**



Note: Temples included in early-midseason oranges in 2006-07.

**FLORIDA CITRUS: Monthly and season average on-tree price per box for
crop years 2002-03 through 2006-07 ^{1/}**

Crop year	Oct	Nov	Dec	Jan	Feb	Mar	Season average
-----------	-----	-----	-----	-----	-----	-----	----------------

Dollars

EARLY, MIDSEASON, AND NAVAL ORANGES ^{2/}

ALL METHODS OF SALE

2002-03	5.03	2.54	2.58	2.54	2.61	--	2.62
2003-04	3.83	2.12	2.15	2.14	2.18	3.70	2.20
2004-05	--	3.59	2.69	2.65	2.76	3.62	2.82
2005-06	10.69	4.23	4.14	4.36	5.17	6.18	4.70
2006-07	13.10	6.31	6.64	7.64	8.88	--	7.50

SALES FOR FRESH USE

2002-03	7.95	5.85	5.85	3.75	3.65	--	5.75
2003-04	6.45	5.15	4.35	3.25	1.65	1.95	4.65
2004-05	--	8.60	8.50	6.40	4.60	3.10	7.60
2005-06	13.30	7.20	6.50	5.00	3.40	2.90	6.20
2006-07	15.40	11.40	10.10	10.80	16.20	--	12.10

SALES FOR PROCESSING

2002-03	1.68	2.29	2.37	2.50	2.58	--	2.42
2003-04	1.13	1.89	2.03	2.11	2.19	3.71	2.09
2004-05	--	2.04	2.32	2.52	2.71	3.63	2.54
2005-06	0.40	3.23	3.94	4.33	5.24	6.28	4.60
2006-07	4.25	5.23	6.44	7.55	8.55	--	7.19

Crop year	Feb	Mar	Apr	May	Jun	Jul	Season average
-----------	-----	-----	-----	-----	-----	-----	----------------

Dollars

LATE (VALENCIA) ORANGES

ALL METHODS OF SALES

2002-03	2.82	3.89	3.87	3.85	4.09	--	3.85
2003-04	2.21	3.57	3.68	3.67	3.88	--	3.64
2004-05	--	3.70	4.30	4.43	4.41	--	4.24
2005-06	--	5.75	6.28	6.51	6.69	6.21	6.33
2006-07	--	10.27	10.67	11.65	11.79	--	10.92

SALES FOR FRESH USE

2002-03	5.20	5.30	3.70	3.70	10.20	--	5.30
2003-04	2.95	2.65	2.35	2.25	4.55	--	2.85
2004-05	--	5.10	5.00	6.50	8.00	--	5.80
2005-06	--	3.20	5.30	6.10	5.60	4.40	5.00
2006-07	--	15.80	15.30	15.30	15.30	--	15.40

SALES FOR PROCESSING

2002-03	2.60	3.84	3.87	3.85	3.74	--	3.80
2003-04	2.09	3.61	3.72	3.71	3.85	--	3.67
2004-05	--	3.58	4.27	4.37	4.26	--	4.17
2005-06	--	5.88	6.31	6.52	6.73	6.28	6.38
2006-07	--	10.05	10.55	11.55	11.15	--	10.75

^{1/} 2006-07 preliminary.

^{2/} Includes Temples in 2006-07

**FLORIDA CITRUS: Monthly and season average on-tree price per box for
crop years 2002-03 through 2006-07 ^{1/}**

Crop year	Oct	Nov	Dec	Jan	Feb	Mar	Apr	May	Jun	Season average
	<i>Dollars</i>									
WHITE GRAPEFRUIT										
ALL METHODS OF SALE										
2002-03	5.80	4.10	2.44	2.07	1.82	1.16	0.77	0.66	--	1.77
2003-04	6.44	3.89	3.31	2.50	1.91	1.41	0.90	0.70	--	1.94
2004-05	14.60	16.35	15.49	14.91	10.81	7.36	6.34	--	--	11.93
2005-06	--	5.54	9.08	9.39	8.29	7.20	5.69	3.47	--	7.47
2006-07	--	6.75	5.76	4.35	2.68	1.48	0.05	-0.55	--	2.36
SALES FOR FRESH USE										
2002-03	8.67	7.97	7.67	7.87	7.67	6.57	6.57	6.67	--	7.57
2003-04	10.10	7.40	7.00	6.90	7.00	8.10	8.10	5.80	--	7.50
2004-05	21.82	21.92	21.52	22.02	19.52	20.32	19.42	--	--	21.32
2005-06	--	11.29	16.69	17.39	17.09	16.79	11.29	9.69	--	16.09
2006-07	--	12.14	12.14	9.44	7.24	7.04	6.44	6.84	--	9.04
SALES FOR PROCESSING										
2002-03	0.53	0.10	0.37	0.42	0.35	0.31	0.42	0.31	--	0.36
2003-04	0.57	0.58	0.70	0.43	0.36	0.51	0.61	0.46	--	0.50
2004-05	4.69	5.07	5.93	5.99	6.02	5.75	5.39	--	--	5.73
2005-06	--	3.65	4.16	4.60	5.55	5.52	5.51	3.23	--	5.03
2006-07	--	0.27	1.52	1.37	1.07	0.57	-0.08	-0.68	--	0.57

Crop year	Oct	Nov	Dec	Jan	Feb	Mar	Apr	May	Jun	Season average
	<i>Dollars</i>									
COLORED GRAPEFRUIT										
ALL METHODS OF SALE										
2002-03	5.27	3.46	2.78	2.67	2.49	2.44	2.11	1.79	--	2.93
2003-04	7.15	4.74	4.17	3.83	4.16	4.09	3.35	3.15	--	4.22
2004-05	15.55	16.17	14.17	14.81	13.67	12.85	12.48	10.82	--	14.02
2005-06	7.81	7.57	8.70	10.41	9.07	6.58	5.88	--	--	7.90
2006-07	10.73	8.51	7.12	5.71	4.00	3.38	2.54	3.37	--	4.91
SALES FOR FRESH USE										
2002-03	6.83	4.93	4.43	4.33	4.73	5.33	5.03	5.63	--	5.13
2003-04	9.47	6.77	6.37	6.47	7.17	7.97	7.57	6.77	--	7.27
2004-05	19.31	20.01	18.11	19.31	18.81	19.11	19.91	16.31	--	19.11
2005-06	14.90	14.20	13.70	15.10	14.50	11.50	11.00	--	--	13.40
2006-07	15.21	12.21	11.11	9.71	7.81	7.71	7.51	9.41	--	9.61
SALES FOR PROCESSING										
2002-03	0.36	0.12	0.25	0.29	0.10	0.27	0.20	0.02	--	0.21
2003-04	0.61	0.73	0.56	0.72	0.60	0.73	0.83	0.67	--	0.70
2004-05	3.16	3.73	4.64	5.32	5.62	4.84	3.61	4.24	--	4.76
2005-06	1.90	2.61	3.53	4.94	4.92	3.96	2.79	--	--	3.78
2006-07	-0.70	-0.10	0.60	0.75	0.60	0.10	-0.20	-1.10	--	0.15

^{1/} 2006-07 preliminary.

**FLORIDA CITRUS: Monthly and season average on-tree price per box for
crop years 2002-03 through 2006-07 ^{1/}**

Crop year	Nov	Dec	Jan	Feb	Mar	Season average
-----------	-----	-----	-----	-----	-----	----------------

Dollars

TANGELOS

ALL METHODS OF SALE

2002-03	2.73	2.29	2.84	--	--	2.60
2003-04	7.78	7.61	9.00	3.26	--	7.48
2004-05	4.13	2.84	1.99	1.51	--	2.45
2005-06	8.43	7.66	4.81	2.70	1.00	5.37
2006-07	6.69	8.19	8.52	9.01	--	8.24

SALES FOR FRESH USE

2002-03	6.35	4.75	19.15	--	--	7.65
2003-04	12.35	11.35	24.35	24.35	--	13.85
2004-05	8.55	5.05	8.05	7.05	--	6.45
2005-06	12.40	10.70	15.90	15.90	--	12.50
2006-07	8.00	10.60	12.00	28.00	--	11.00

SALES FOR PROCESSING

2002-03	0.20	0.90	0.95	--	--	0.84
2003-04	-0.35	-0.10	-0.10	-0.10	--	-0.14
2004-05	-0.30	0.30	0.50	1.10	--	0.57
2005-06	0.20	0.05	0.90	1.00	1.00	0.79
2006-07	4.40	6.30	7.30	7.10	--	6.80

Crop year	Jan	Feb	Mar	Apr	Season average
-----------	-----	-----	-----	-----	----------------

Dollars

TEMPLES ^{2/}

ALL METHODS OF SALE

2002-03	2.54	2.03	1.08	--	2.01
2003-04	2.64	0.45	0.62	0.47	1.07
2004-05	3.77	2.26	1.97	--	2.48
2005-06	5.98	3.52	1.99	1.80	3.16
2006-07	--	--	--	--	--

SALES FOR FRESH USE

2002-03	3.65	2.85	6.15	--	3.65
2003-04	5.25	1.35	3.35	3.35	3.65
2004-05	5.05	3.25	3.55	--	4.05
2005-06	8.40	5.40	4.60	--	6.60
2006-07	--	--	--	--	--

SALES FOR PROCESSING

2002-03	1.80	1.85	0.45	--	1.51
2003-04	0.00	0.15	0.40	0.40	0.24
2004-05	0.60	1.90	1.70	--	1.72
2005-06	1.25	1.50	1.80	1.80	1.70
2006-07	--	--	--	--	--

^{1/} 2006-07 preliminary.

^{2/} Included in early-midseason oranges in 2006-07.

**FLORIDA CITRUS: Monthly and season average on-tree price per box for
crop years 2002-03 through 2006-07 ^{1/}**

Crop year	Sep	Oct	Nov	Dec	Jan	Feb	Season average
	<i>Dollars</i>						
EARLY TANGERINES ^{2/}							
ALL METHODS OF SALE							
2002-03	--	7.66	9.07	8.17	--	--	8.39
2003-04	7.25	5.72	5.96	6.62	4.92	--	6.15
2004-05	--	11.06	9.84	10.42	5.83	--	10.12
2005-06	--	13.49	10.55	9.54	8.41	--	10.40
2006-07	--	10.39	13.31	12.04	8.22	--	12.01
SALES FOR FRESH USE							
2002-03	--	10.40	13.50	12.60	--	--	12.20
2003-04	10.00	9.50	10.70	10.70	12.10	--	10.50
2004-05	--	13.50	14.00	14.50	11.50	--	14.00
2005-06	--	18.10	16.20	14.10	16.10	--	15.70
2006-07	--	12.50	17.50	15.50	13.50	--	15.50
SALES FOR PROCESSING							
2002-03	--	-1.44	-0.91	0.30	--	--	-0.65
2003-04	-2.20	-2.07	-1.61	-1.40	-1.30	--	-1.61
2004-05	--	-1.30	-1.17	-0.80	-0.30	--	-0.96
2005-06	--	-1.30	-0.62	-0.50	0.60	--	-0.42
2006-07	--	3.80	3.71	4.70	4.50	--	4.16

Crop year	Dec	Jan	Feb	Mar	Apr	May	Season Average
	<i>Dollars</i>						
HONEY TANGERINES							
ALL METHODS OF SALE							
2002-03	--	10.05	6.73	7.22	7.71	12.13	8.36
2003-04	10.46	11.28	6.72	7.00	11.00	20.60	9.16
2004-05	--	16.24	12.25	12.96	16.24	--	14.36
2005-06	--	12.40	9.44	7.24	7.39	6.43	8.45
2006-07	--	15.07	12.60	11.74	14.15	16.81	13.27
SALES FOR FRESH USE							
2002-03	--	14.20	9.80	10.50	11.00	15.00	11.90
2003-04	16.00	15.00	9.60	10.00	15.00	23.30	12.70
2004-05	--	20.50	15.50	16.50	20.50	--	18.20
2005-06	--	16.40	12.40	9.40	10.00	8.60	11.30
2006-07	--	19.50	16.00	14.00	16.90	20.50	16.50
SALES FOR PROCESSING							
2002-03	--	-1.35	-0.45	-0.55	-0.75	-0.75	-0.82
2003-04	-1.10	-1.00	-0.70	-0.50	-0.60	1.40	-0.67
2004-05	--	1.60	3.50	2.80	2.90	--	2.73
2005-06	--	3.10	3.60	3.60	3.50	2.70	3.39
2006-07	--	6.20	7.10	7.90	8.90	8.90	7.50

^{1/} 2006-07 preliminary.

^{2/} Fallglo and Sunburst.

FLORIDA CITRUS: Total trees by counties and types of fruit as of January 2006 Census

County	Round oranges			Grapefruit				Specialty fruit ^{2/}	All citrus
	Early, midseason, and Navel	Late (Valencia)	All ^{1/}	Seedless		Seedy	All ^{1/}		
				White	Colored				
	<i>1,000 trees</i>								
Brevard	249.4	220.7	473.6	13.8	22.3	0.6	36.7	43.2	553.5
Charlotte	446.6	1,000.2	1,446.8	10.6	120.4	0.0	131.0	130.8	1,708.6
Citrus	11.3	1.4	12.7	0.0	2.5	0.0	2.5	1.7	16.9
Collier	1,833.7	2,752.2	4,585.9	13.8	114.9	0.0	128.7	167.1	4,881.7
DeSoto	3,164.8	4,766.1	8,011.9	5.7	49.8	0.1	55.6	114.2	8,181.7
Glades	701.3	616.8	1,322.1	2.2	16.3	0.0	18.5	49.4	1,390.0
Hardee	3,390.1	1,798.0	5,307.8	11.0	41.2	1.3	56.2	147.5	5,511.5
Hendry	4,160.4	7,214.2	11,388.0	119.1	316.4	4.1	439.6	452.9	12,280.5
Hernando	92.3	2.2	95.9	0.1	1.0	0.0	1.1	9.6	106.6
Highlands	2,628.7	5,138.4	7,820.4	45.0	68.9	27.1	143.3	289.2	8,252.9
Hillsborough	1,108.4	391.1	1,516.2	4.3	8.2	2.5	15.0	97.7	1,628.9
Indian River	1,035.3	1,087.9	2,148.4	882.0	1,303.3	1.2	2,197.2	158.7	4,504.3
Lake	1,109.2	394.7	1,525.8	8.2	98.1	3.6	111.3	485.4	2,122.5
Lee	484.1	864.9	1,349.2	5.3	74.1	0.1	79.5	60.6	1,489.3
Manatee	1,242.8	1,057.6	2,344.0	13.9	19.2	8.7	41.8	45.2	2,431.0
Marion	94.4	20.9	115.8	0.5	3.5	0.0	4.0	26.3	146.1
Martin	1,480.3	3,184.2	4,671.2	128.9	103.4	0.0	241.5	111.6	5,024.3
Okeechobee	511.2	396.7	908.0	46.6	53.7	0.0	100.3	48.6	1,056.9
Orange	285.5	188.9	476.7	1.3	11.6	0.1	13.0	59.7	549.4
Osceola	774.5	462.9	1,238.9	61.2	44.4	0.6	106.2	65.9	1,411.0
Palm Beach	19.1	5.0	24.1	4.7	44.0	0.0	48.7	183.6	256.4
Pasco	817.6	240.8	1,073.9	2.2	7.9	0.1	10.2	56.8	1,140.9
Polk	4,216.8	4,551.2	9,011.3	107.7	201.3	29.6	342.0	869.2	10,222.5
Putnam	14.1	2.6	16.7	0.0	0.7	0.0	0.7	13.1	30.5
St. Lucie	998.4	2,651.8	3,692.9	689.6	1,871.6	0.0	2,584.5	360.2	6,637.6
Sarasota	39.7	85.5	125.3	7.8	36.2	0.3	44.3	18.1	187.7
Seminole	33.7	8.5	42.5	0.0	2.2	0.0	2.2	14.9	59.6
Volusia	77.3	20.6	99.4	3.5	11.5	0.3	15.3	6.2	120.9
Other Counties ^{3/}	3.7	0.0	4.0	0.1	0.2	0.2	0.5	0.8	5.3
Total	31,024.7	39,126.0	70,849.4	2,189.1	4,648.8	80.5	6,971.4	4,088.2	81,909.0

^{1/} Includes unidentified variety acreage.

^{2/} Temples, tangelos, tangerines, lemons, and other.

^{3/} Alachua and Pinellas counties.

FLORIDA CITRUS: Production by counties, areas, and types, 2006-07 season

County and area	Oranges			Grapefruit			Specialty fruit ^{2/}	All citrus
	Early, midseason, and Navel ^{1/}	Late (Valencia)	All	White	Colored	All		
	<i>1,000 boxes</i>							
Brevard	368	282	650	72	107	179	42	871
Charlotte	819	1,596	2,415	40	351	391	190	2,996
Collier	3,499	4,294	7,793	58	314	372	225	8,390
DeSoto	7,204	8,185	15,389	21	224	245	198	15,832
Glades	1,228	986	2,214	11	48	59	99	2,372
Hardee	8,155	3,237	11,392	37	228	265	346	12,003
Hendry	7,565	11,688	19,253	558	872	1,430	731	21,414
Hernando	162	4	166	--	5	5	10	181
Highlands	6,187	9,376	15,563	384	373	757	424	16,744
Hillsborough	3,050	760	3,810	27	51	78	239	4,127
Indian River	1,546	1,387	2,933	3,808	5,376	9,184	163	12,280
Lake	1,865	779	2,644	39	453	492	603	3,739
Lee	777	1,403	2,180	25	260	285	118	2,583
Manatee	3,186	1,966	5,152	90	113	203	84	5,439
Marion	148	37	185	2	18	20	28	233
Martin	2,088	4,038	6,126	400	224	624	80	6,830
Okeechobee	1,077	682	1,759	217	174	391	77	2,227
Orange	530	385	915	6	48	54	84	1,053
Osceola	2,123	910	3,033	279	228	507	92	3,632
Palm Beach	54	9	63	23	191	214	233	510
Pasco	1,384	502	1,886	6	36	42	62	1,990
Polk	11,105	8,256	19,361	615	1,022	1,637	1,372	22,370
St. Lucie	1,158	2,429	3,587	2,537	6,933	9,470	280	13,337
Sarasota	99	152	251	24	183	207	29	487
Seminole	57	16	73	--	7	7	24	104
Volusia	123	34	157	20	46	66	7	230
Other ^{3/}	43	7	50	1	15	16	10	76
Total	65,600	63,400	129,000	9,300	17,900	27,200	5,850	162,050
Indian River	3,000	4,500	7,500	6,700	12,800	19,500	501	27,501
Northern	4,264	1,744	6,008	53	583	636	824	7,468
Central	19,136	18,456	37,592	1,247	1,617	2,864	1,849	42,305
Western	21,700	14,300	36,000	200	800	1,000	897	37,897
Southern	17,500	24,400	41,900	1,100	2,100	3,200	1779	46,879
Total	65,600	63,400	129,000	9,300	17,900	27,200	5,850	162,050

^{1/} Includes Temple oranges.

^{2/} Tangelos and tangerines

^{3/} Alachua, Citrus, Pinellas, and Putnam counties.

FLORIDA CITRUS: Total acreage by counties and types of fruit as of January 2006 Census

County	Round oranges			Grapefruit				Specialty fruit ^{2/}	All citrus
	Early, midseason, and Navel	Late (Valencia)	All ^{1/}	Seedless		Seedy	All ^{1/}		
				White	Colored				
	<i>Acres</i>								
Brevard	2,212	2,035	4,289	158	239	7	404	387	5,080
Charlotte	3,264	6,916	10,180	95	918	0	1,013	690	11,883
Citrus	104	9	113	0	20	0	20	12	145
Collier	12,530	18,659	31,189	112	949	0	1,061	1,144	33,394
DeSoto	23,783	35,456	59,869	49	388	1	438	776	61,083
Glades	4,507	3,594	8,127	19	156	0	175	253	8,555
Hardee	27,898	14,557	43,487	106	335	15	477	1,120	45,084
Hendry	27,165	46,322	73,583	924	2,360	40	3,324	2,819	79,726
Hernando	793	13	827	1	10	0	11	83	921
Highlands	19,409	39,270	59,116	462	554	274	1,311	2,244	62,671
Hillsborough	10,251	3,460	13,848	52	102	26	180	755	14,783
Indian River	9,000	8,966	18,144	8,916	11,893	12	20,877	1,170	40,191
Lake	8,230	2,807	11,191	76	778	35	899	3,108	15,198
Lee	3,626	5,941	9,569	47	647	1	695	394	10,658
Manatee	9,766	7,707	17,749	137	212	84	433	366	18,548
Marion	795	168	967	5	36	0	41	177	1,185
Martin	10,598	21,492	32,138	1,123	909	0	2,113	787	35,038
Okeechobee	4,246	3,584	7,832	502	520	0	1,022	368	9,222
Orange	2,318	1,662	3,998	21	76	1	98	452	4,548
Osceola	6,660	3,860	10,532	582	479	6	1,067	571	12,170
Palm Beach	109	45	154	49	377	0	426	1,088	1,668
Pasco	5,966	1,555	7,645	21	75	1	97	448	8,190
Polk	35,783	38,535	76,430	1,158	2,054	322	3,564	6,404	86,398
Putnam	89	17	106	0	4	0	4	72	182
St. Lucie	7,257	18,084	25,672	6,193	16,672	0	23,073	2,642	51,387
Sarasota	337	732	1,070	72	342	3	417	165	1,652
Seminole	295	85	382	0	19	0	19	128	529
Volusia	743	237	993	46	107	3	156	82	1,231
Other Counties ^{3/}	37	1	41	1	1	2	4	8	53
Total	237,771	285,769	529,241	20,927	41,232	833	63,419	28,713	621,373

^{1/} Includes unidentified variety acreage.

^{2/} Temples, tangelos, tangerines, lemons, and other.

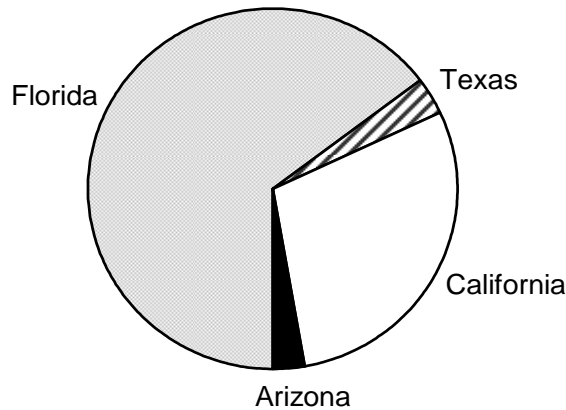
^{3/} Alachua and Pinellas counties.

CITRUS: Bearing acreage by types and states, crop year 2006-07

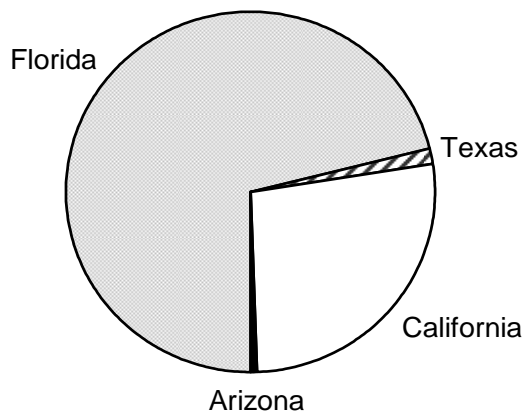
	Arizona	California	Florida	Texas	U.S. Total
	<i>Acres</i>				
ORANGES					
Early, Midseason, and Navel	2,500	136,000	212,700 ^{1/}	7,500 ^{2/}	358,700
Valencia	1,800	43,000	263,200	1,300	309,300
All Oranges	4,300	179,000	475,900	8,800	668,000
GRAPEFRUIT					
White Seedless	--	--	19,900	--	--
Colored Seedless	--	--	37,500	--	--
All Grapefruit	1,200	11,500	57,400	18,500	88,600
LEMONS	13,500	45,000	--	--	58,500
TANGELOS	--	--	5,500	--	5,500
TANGERINES	4,000 ^{3/}	16,000 ^{3/}	15,600	--	35,600
TOTAL CITRUS	23,000	251,500	554,400	27,300	856,200

^{1/} Includes Temple oranges.
^{2/} Includes small quantities of tangerines.
^{3/} Includes tangelos and tangors.

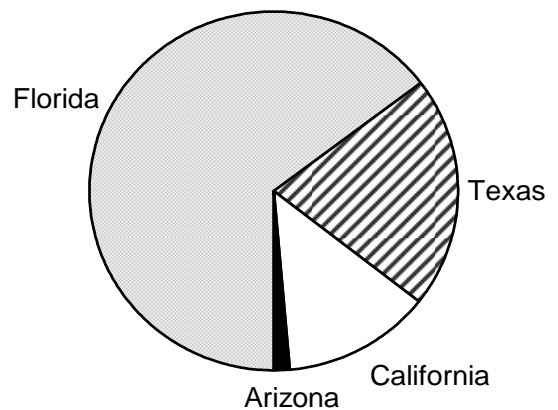
2006-07 Total Citrus Bearing Acreage



2006-07 Orange Bearing Acreage



2006-07 Grapefruit Bearing Acreage



BOXES OF FRUIT PER TREE

The Florida Agricultural Statistics Service conducts objective surveys to determine fruit per tree, average sizes, and droppage between August and maturity. These data are used to estimate production per tree for each type of citrus fruit, as shown in the following four tables.

The estimates of production per tree are based on official end-of-season production estimates and the number of bearing trees indicated by the citrus tree inventory surveys. The

averages of boxes per tree for age groups shown are calculated from estimates of fruit per tree in August, size at maturity, and drop between August and maturity.

Additionally, the boxes are subdivided by production areas. Estimated boxes by types and age groups are weighted averages of the indicated seasons. Small sample sizes in some age/area cells and rounding may contribute to inconsistent averages.

FLORIDA CITRUS: Estimated boxes of fruit per tree by age groups and production areas, 2002-03 through 2006-07

Fruit type and season	Area	Age of trees					Average ^{1/}
		3 – 5 years	6 – 8 years	9 – 13 years	14 – 23 years	24 years and older	
<i>Boxes per tree</i>							
EARLY, MIDSEASON, AND NAVEL ORANGES:							
2002-03	State	0.7	1.8	2.7	3.8	4.3	3.08
	Indian River	0.5	1.3	1.8	2.2	2.5	1.92
	Northern & Central	0.7	2.1	3.1	4.2	5.8	3.57
	Western	0.6	1.4	2.5	4.0	4.6	3.31
	Southern	0.8	2.0	2.6	3.5	3.4	2.74
2003-04	State	1.8	1.9	3.2	4.1	5.3	3.66
	Indian River	0.7	1.3	1.7	2.4	3.5	2.18
	Northern & Central	2.7	2.6	3.8	4.7	7.3	4.39
	Western	2.0	1.6	3.7	4.7	5.3	4.21
	Southern	1.6	1.6	2.5	3.3	4.4	2.86
2004-05 ^{2/}	State	1.2	1.7	2.2	2.9	2.8	2.43
	Indian River	0.7	0.6	0.6	0.9	1.0	0.79
	Northern & Central	2.2	1.7	2.3	2.9	3.2	2.63
	Western	1.0	1.2	2.0	2.5	2.8	2.17
	Southern	1.0	2.7	2.5	3.5	3.9	2.89
2005-06 ^{3/}	State	1.8	1.8	2.0	2.8	3.7	2.60
	Indian River	0.7	0.6	0.4	1.4	1.5	1.03
	Northern & Central	4.6	2.6	2.7	3.7	5.7	3.74
	Western	1.3	1.6	2.9	3.6	4.2	3.12
	Southern	0.5	1.5	0.8	1.6	1.4	1.34
2006-07 ^{4/}	State	1.1	1.8	1.8	2.5	3.6	2.36
	Indian River	0.2	0.6	0.9	1.5	1.9	1.33
	Northern & Central	0.7	2.2	2.2	2.6	4.9	2.64
	Western	2.1	2.3	2.0	3.0	3.7	2.80
	Southern	0.4	1.2	1.6	2.3	3.1	1.96
Average	State	1.34	1.78	2.55	3.20	4.02	2.86
	Indian River	0.82	0.95	1.22	1.76	2.14	1.53
	Northern & Central	2.16	2.24	3.00	3.55	5.40	3.42
	Western	1.40	1.66	2.68	3.61	4.23	3.15
	Southern	0.89	1.80	2.28	2.79	3.32	2.40

^{1/} Average weighted by bearing trees.

^{2/} Hurricane Charlie affected production in the Central and Western growing areas. Hurricanes Jeanne and Francis affected production in all areas except the Southern area.

^{3/} Hurricane Wilma affected production in the Indian River and Southern areas.

^{4/} Includes Temples beginning in 2006-07.

FLORIDA CITRUS: Estimated boxes of fruit per tree by age groups and production areas, 2002-03 through 2006-07

Fruit type and season	Area	Age of trees					Average ^{1/}
		3 – 5 years	6 – 8 years	9 – 13 years	14 – 23 years	24 years and older	
							<i>Boxes per tree</i>
LATE (VALENCIA) ORANGES:							
2002-03	State	1.0	1.6	1.9	2.6	4.0	2.18
	Indian River	0.8	0.9	1.6	1.7	2.0	1.55
	Northern & Central	1.2	1.6	2.0	3.3	5.4	2.64
	Western	1.3	2.4	2.3	2.7	4.1	2.52
	Southern	0.8	1.4	1.7	2.4	3.3	1.89
2003-04	State	1.7	2.1	2.5	3.0	5.1	2.83
	Indian River	1.6	1.1	1.8	2.2	3.5	2.07
	Northern & Central	1.4	2.3	2.8	4.0	6.5	3.40
	Western	2.7	2.3	3.4	3.3	4.7	3.38
	Southern	1.0	2.1	2.3	2.5	4.8	2.40
2004-05 ^{2/}	State	1.1	1.2	1.7	2.0	2.1	1.74
	Indian River	0.4	0.4	0.6	1.1	0.8	0.78
	Northern & Central	1.8	1.6	1.9	2.5	2.6	2.14
	Western	1.3	1.3	1.8	1.7	2.3	1.68
	Southern	0.8	1.1	1.7	2.2	2.2	1.79
2005-06 ^{3/}	State	0.8	1.8	1.8	2.1	3.0	1.96
	Indian River	0.2	0.3	0.6	1.3	0.9	0.87
	Northern & Central	0.7	2.0	2.6	3.0	4.0	2.72
	Western	2.4	2.4	2.4	2.7	4.5	2.82
	Southern	0.3	1.3	1.4	1.4	1.5	1.32
2006-07	State	0.6	1.5	1.5	1.9	2.7	1.75
	Indian River	0.2	0.4	0.8	1.4	1.9	1.09
	Northern & Central	1.0	1.1	1.7	2.2	3.3	2.01
	Western	0.6	2.2	1.7	1.9	2.7	1.91
	Southern	0.4	1.4	1.6	1.8	2.5	1.68
Average	State	1.07	1.61	1.96	2.25	3.46	2.11
	Indian River	0.62	0.68	1.24	1.50	1.89	1.30
	Northern & Central	1.24	1.71	2.21	2.90	4.41	2.60
	Western	1.66	2.11	2.40	2.42	3.73	2.47
	Southern	0.67	1.45	1.83	1.99	2.89	1.83

^{1/} Average weighted by bearing trees.

^{2/} Hurricane Charlie affected production in the Central and Western growing areas. Hurricanes Jeanne and Francis affected production in all areas except the Southern area.

^{3/} Hurricane Wilma affected production in the Indian River and Southern areas.

FLORIDA CITRUS: Estimated boxes of fruit per tree by age groups and production areas, 2002-03 through 2006-07

Fruit type and season	Area	Age of trees					Average ^{1/}
		3 – 5 years	6 – 8 years	9 – 13 years	14 – 23 years	24 years and older	
		<i>Boxes per tree</i>					
WHITE GRAPEFRUIT:							
2002-03	State	1.9	3.0	3.2	4.8	5.3	4.11
	Indian River	1.3	2.4	3.2	3.7	4.8	3.64
	Northern & Central	6.3	6.0	3.5	5.9	10.2	6.50
	Western	4.0	5.7	3.3	6.2	4.8	4.90
	Southern	8.4	6.4	3.1	6.2	4.6	4.20
2003-04	State	2.5	3.5	3.5	4.4	6.9	4.90
	Indian River	1.5	3.3	3.7	3.4	7.0	4.75
	Northern & Central	8.2	6.8	4.9	9.4	10.3	8.11
	Western	2.0	3.4	0.4	1.9	5.6	3.57
	Southern	5.7	1.9	2.1	2.8	4.6	3.23
2004-05 ^{2/}	State	1.0	0.8	1.1	1.4	1.3	1.25
	Indian River	0.6	0.6	0.6	0.4	0.8	0.61
	Northern & Central	3.7	1.9	3.7	3.7	3.7	3.63
	Western	--	--	2.1	2.2	1.7	1.96
	Southern	2.7	3.3	1.1	4.3	2.2	2.54
2005-06 ^{3/}	State	1.9	2.5	3.0	2.3	3.8	2.94
	Indian River	1.0	1.5	2.5	1.9	2.8	2.20
	Northern & Central	7.9	7.8	9.1	5.7	11.9	8.21
	Western	4.8	--	3.7	3.6	7.4	5.46
	Southern	1.2	4.8	1.8	1.0	0.9	1.22
2006-07	State	0.3	2.9	4.0	4.2	5.9	4.47
	Indian River	0.3	2.5	4.0	3.9	5.8	4.28
	Northern & Central	0.5	1.9	5.0	5.6	7.0	5.46
	Western	--	--	4.2	1.9	6.1	4.26
	Southern	0.9	6.7	2.5	4.8	5.8	4.74
Average	State	1.54	2.64	2.99	3.23	4.85	3.61
	Indian River	0.97	2.20	2.92	2.44	4.44	3.18
	Northern & Central	5.08	5.24	4.51	5.97	8.87	6.43
	Western	4.17	5.28	2.52	3.24	5.08	4.21
	Southern	3.33	4.89	2.27	3.56	3.91	3.30

^{1/} Average weighted by bearing trees.

^{2/} Hurricane Charlie affected production in the Central and Western growing areas. Hurricanes Jeanne and Francis affected production in all areas except the Southern area.

^{3/} Hurricane Wilma affected production in the Indian River and Southern areas.

FLORIDA CITRUS: Estimated boxes of fruit per tree by age groups and production areas, 2002-03 through 2006-07

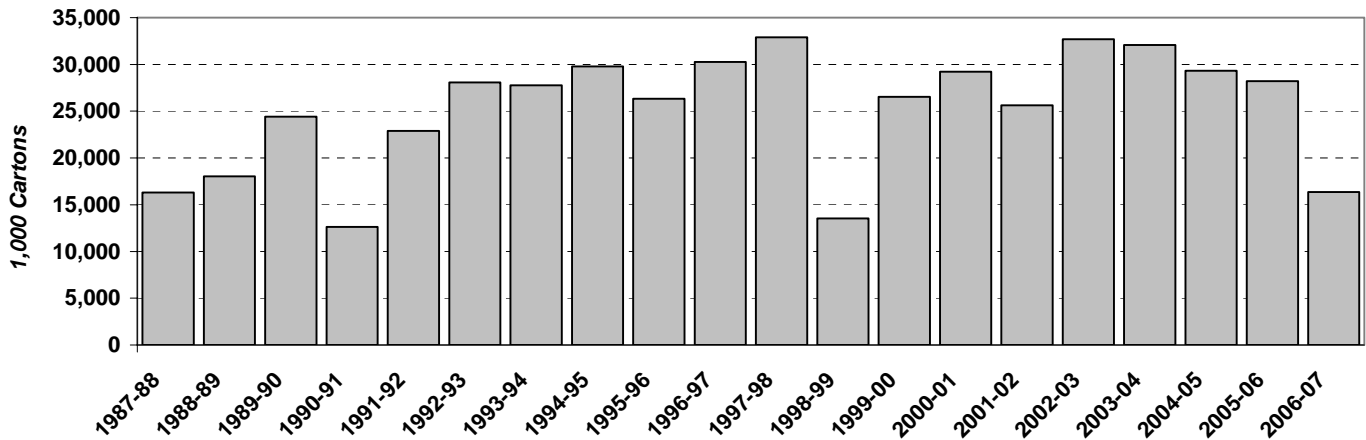
Fruit type and season	Area	Age of trees					Average ^{1/}
		3 – 5 years	6 – 8 years	9 – 13 years	14 – 23 years	24 years and older	
		<i>Boxes per tree</i>					
COLORED GRAPEFRUIT:							
2002-03	State	1.6	1.8	3.0	4.0	4.8	3.54
	Indian River	1.0	1.7	2.4	3.3	4.3	3.09
	Northern & Central	1.3	1.1	3.1	8.2	9.8	5.19
	Western	4.8	1.4	3.6	5.8	9.3	4.76
	Southern	2.4	4.0	4.4	4.2	6.4	4.32
2003-04	State	2.9	3.5	3.6	4.6	6.0	4.37
	Indian River	1.1	3.4	3.0	4.5	5.7	4.20
	Northern & Central	5.7	4.0	5.9	5.0	8.5	5.70
	Western	3.6	3.3	3.4	2.5	12.8	4.17
	Southern	5.7	4.3	3.8	5.1	6.3	4.39
2004-05 ^{2/}	State	0.8	2.0	2.2	1.9	1.5	1.85
	Indian River	0.9	1.8	0.9	1.0	1.2	1.04
	Northern & Central	0.9	2.3	3.5	3.1	1.9	3.07
	Western	1.1	1.0	0.9	0.9	3.4	1.16
	Southern	0.6	2.5	3.3	7.1	9.1	4.34
2005-06 ^{3/}	State	0.3	1.2	2.9	3.1	3.8	2.96
	Indian River	0.1	1.4	2.4	2.7	3.4	2.62
	Northern & Central	1.6	3.0	7.5	6.9	12.5	7.32
	Western	2.1	1.5	0.8	2.6	2.1	2.03
	Southern	0.2	0.5	1.9	2.1	4.3	1.89
2006-07	State	1.0	2.7	3.4	4.2	5.9	4.23
	Indian River	0.7	3.8	3.2	4.0	5.9	4.23
	Northern & Central	2.7	1.1	4.8	5.9	6.1	5.57
	Western	6.2	1.0	10.2	5.5	8.2	5.93
	Southern	0.1	1.1	2.8	3.7	4.6	3.11
Average	State	1.28	2.20	3.02	3.55	4.48	3.41
	Indian River	0.74	2.33	2.37	3.07	4.18	3.05
	Northern & Central	2.28	2.27	4.55	5.77	8.07	5.32
	Western	3.01	1.55	2.83	3.48	7.55	3.60
	Southern	2.28	1.77	3.63	4.20	6.15	3.77

^{1/} Average weighted by bearing trees.

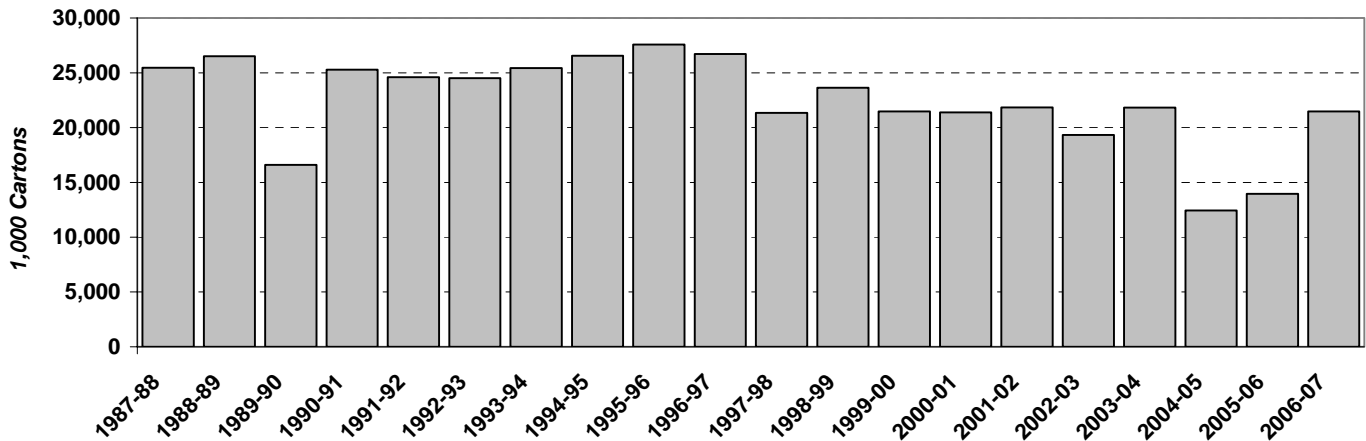
^{2/} Hurricane Charlie affected production in the Central and Western growing areas. Hurricanes Jeanne and Francis affected production in all areas except the Southern area.

^{3/} Hurricane Wilma affected production in the Indian River and Southern areas.

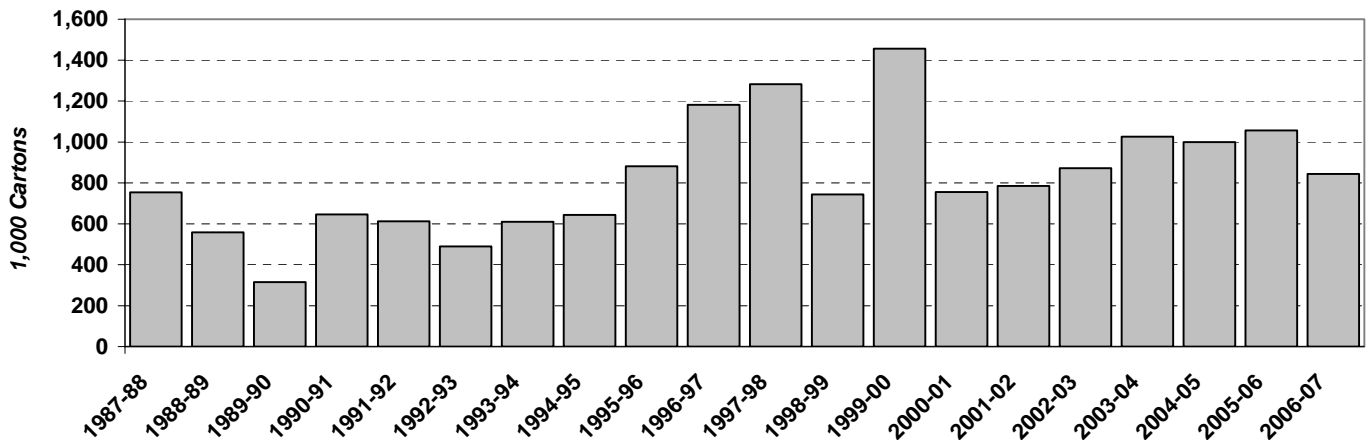
**U. S. Fresh Orange Exports by Season,
1987-88 through 2006-07**



**U. S. Fresh Grapefruit Exports by Season,
1987-88 through 2006-07**



**U. S. Fresh Tangerine Exports by Season,
1987-88 through 2006-07**



**U. S. CITRUS: Fresh exports to selected countries, principal types, and months,
crop year 2006-07**

Country	Oct	Nov	Dec	Jan	Feb	Mar	Apr	May	Jun	Jul	Aug	Sep	Total
	<i>1,000 cartons</i>												
ORANGES ^{1/}													
Canada	114	599	782	1,230	324	452	552	535	342	139	93	82	5,244
Republic of Korea	0	62	333	674	579	1,189	281	31	25	7	1	3	3,185
Japan	13	139	227	379	78	412	749	149	26	20	5	1	2,198
Hong Kong	42	27	274	296	14	232	532	289	185	165	52	21	2,129
China, Peoples Republic	29	39	209	113	20	52	105	99	120	71	13	4	874
Mexico	32	79	61	45	34	57	65	50	47	64	100	95	729
Australia ^{2/}	0	80	106	121	72	138	29	0	0	0	0	1	547
Malaysia	10	7	105	91	17	24	105	100	62	8	2	0	531
Taiwan	0	1	5	14	1	23	62	111	43	11	6	0	277
Singapore	0	14	57	43	6	16	35	41	31	4	2	0	249
New Zealand ^{2/}	0	8	21	8	11	51	21	5	0	0	0	0	125
Bahamas	8	4	4	3	4	3	5	5	5	8	4	4	57
Philippines	0	8	17	7	0	1	4	8	3	3	2	0	53
Indonesia	0	1	8	3	1	0	3	13	1	10	0	0	40
Other	2	5	31	10	6	15	17	19	8	6	5	3	127
Total	250	1,073	2,240	3,037	1,167	2,665	2,565	1,455	898	516	285	214	16,365
GRAPEFRUIT													
Japan	618	808	575	1,448	2,318	2,200	1,276	399	129	50	1	19	9,841
Korea, Republic of	8	133	467	791	891	1,103	335	60	130	84	8	6	4,016
Canada	175	291	227	400	340	337	332	236	124	72	48	54	2,636
France ^{2/}	103	245	172	256	196	209	210	17	0	0	0	0	1,408
Netherlands	115	227	137	171	187	238	195	33	0	0	0	0	1,303
New Zealand ^{2/}	0	34	105	114	50	80	18	4	6	0	0	0	411
Belgium-Luxembourg ^{2/}	27	73	39	76	68	74	53	0	0	0	0	0	410
United Kingdom	26	82	39	57	47	72	68	2	0	0	0	0	393
Germany ^{2/}	4	130	37	38	26	35	27	0	0	0	0	0	297
Switzerland ^{2/}	7	13	21	26	18	28	23	0	0	0	0	0	136
Australia ^{2/}	0	13	43	26	46	2	0	0	0	2	0	0	132
Taiwan	16	0	1	3	3	19	31	18	0	0	0	0	91
Hong Kong	1	9	4	8	8	34	7	4	0	0	0	8	83
Sweden	2	15	4	10	7	12	13	6	0	0	0	0	69
Denmark ^{2/}	6	13	13	6	6	10	4	0	0	0	0	0	58
Poland	1	5	4	7	11	4	8	0	0	0	0	0	40
Other	4	11	20	22	19	22	10	7	10	9	8	3	145
Total	1,113	2,102	1,908	3,459	4,241	4,479	2,610	786	399	217	65	90	21,469
TANGERINES ^{3/}													
Canada	6	55	106	146	98	108	93	20	2	1	0	2	637
Japan	17	10	4	4	26	60	1	1	0	0	0	0	123
New Zealand	0	2	18	0	1	1	0	0	0	0	0	0	22
Australia ^{2/}	0	0	14	5	0	0	0	0	0	0	0	0	19
Korea, Republic of	0	0	0	5	2	10	0	0	0	0	0	0	17
Barbados	0	0	0	1	2	2	2	1	0	0	0	0	8
Other	0	1	4	2	0	3	2	0	0	3	3	0	18
Total	23	68	146	163	129	184	98	22	2	4	3	2	844

^{1/} Includes Temples.

^{2/} Denotes a country that is a summarization of its component countries.

^{3/} Includes Mandarins.

SOURCE: See Page 47 Data Sources, Item 5.

FLORIDA CITRUS: Certified citrus exports by weeks, crop year 2006-07

Week ended	Oranges		Grapefruit		Tangelos	Tangerines	Total exports	
	Navel	Other ^{1/}	White	Colored				
<i>1,000 cartons</i>								
Sep	30	1	1	2	4	--	--	8
Oct	8	--	--	34	73	--	--	107
	15	6	1	88	161	--	2	258
	22	7	4	95	261	--	3	370
	29	7	8	84	275	--	1	375
Nov	5	5	13	61	333	--	2	414
	12	10	12	99	321	--	10	452
	19	36	8	95	364	1	12	516
	26	40	4	66	234	1	12	357
Dec	3	36	8	29	189	1	17	280
	10	14	6	57	218	1	17	313
	17	10	6	84	221	--	21	342
	24	2	7	58	165	--	18	250
	31	1	7	69	201	--	9	287
Jan	7	1	5	105	343	--	9	463
	14	4	11	81	378	1	19	494
	21	2	20	219	438	--	30	709
	28	4	15	163	464	1	12	659
Feb	4	1	13	270	541	--	20	845
	11	--	10	209	561	--	18	798
	18	1	12	186	509	--	18	726
	25	--	14	243	601	--	19	877
Mar	4	--	15	268	537	--	15	835
	11	--	15	197	581	--	24	817
	18	--	21	164	525	--	16	726
	25	--	16	144	499	--	20	679
Apr	1	--	16	101	442	--	15	574
	8	--	20	23	392	--	13	448
	15	--	20	9	275	--	7	311
	22	--	27	4	209	--	11	251
	29	--	28	1	120	--	16	165
May	6	--	28	--	71	--	12	111
	13	--	26	--	28	--	4	58
	20	--	15	--	13	--	--	28
	27	--	17	--	5	--	--	22
Jun	3	--	9	--	2	--	--	11
	10	--	5	--	1	--	--	6
	17	--	5	--	2	--	--	7
	24	--	9	--	1	--	--	10
	30	--	4	--	1	--	--	5
Jul Total		--	11	--	1	--	--	12
Total		188	492	3,308	10,560	6	422	14,976

^{1/} Includes Temples

SOURCE: See Page 47, Data Sources, Item 6.

**FLORIDA CITRUS: Certified citrus exports,
crop years 1997-98 through 2006-07**

Crop year	Oranges ^{1/}			Grapefruit			Specialty fruit ^{2/}			Grand Total
	Commer- cial	Govern- ment	Total	Commer- cial	Govern- ment	Total	Commer- cial	Govern- ment	Total	
	<i>1,000 cartons</i>									
1997-98	1,441	--	1,441	21,853	--	21,853	493	--	493	23,787
1998-99	2,064	--	2,064	22,126	--	22,126	527	--	527	24,717
1999-00	1,228	--	1,228	20,728	--	20,728	580	--	580	22,536
2000-01	1,495	--	1,495	20,248	--	20,248	540	--	540	22,283
2001-02	1,166	--	1,166	20,680	--	20,680	503	--	503	22,349
2002-03	1,028	--	1,028	18,334	--	18,334	519	--	519	19,881
2003-04	1,404	--	1,404	21,354	--	21,354	658	--	658	23,416
2004-05	992	--	992	8,522	--	8,522	430	--	430	9,944
2005-06	684	--	684	7,684	--	7,684	480	--	480	8,848
2006-07	680	--	680	13,868	--	13,868	428	--	428	14,976

^{1/} Includes Temples beginning 2006-07.

^{2/} Includes Temples (until 2006-07), tangelos, and tangerines.

SOURCE: See Page 47. Data Sources. Item 6.

**FLORIDA CITRUS: Fresh exports,
crop years 2005-06 and 2006-07**

Destination	Grapefruit		Oranges ^{1/}		Tangerines		Total	
	2005-06	2006-07	2005-06	2006-07	2005-06	2006-07	2005-06	2006-07
	<i>1,000 cartons</i>							
Japan	4,557	7,860	--	--	6	6	4,563	7,866
Canada	772	1,279	544	569	386	413	1,702	2,261
Belgium	1,233	2,091	6	--	--	--	1,239	2,091
Holland	282	1,242	--	--	--	--	282	1,242
France	146	346	119	--	11	--	276	346
England	198	310	--	--	--	--	198	310
South Korea	174	197	--	--	--	--	174	197
Taiwan	91	68	--	113	--	--	91	181
Germany	4	135	4	--	68	--	76	135
United Kingdom	58	101	--	--	--	--	58	101
Sweden	43	71	--	--	--	--	43	71
Denmark	32	60	--	--	--	--	32	60
Hong Kong	31	40	--	--	--	--	31	40
Finland	4	23	17	--	--	--	21	23
Singapore	19	14	--	--	--	--	19	14
Norway	14	14	--	--	--	--	14	14
China	11	10	--	--	--	--	11	10
United Arab	8	2	--	4	--	--	8	6
Malaysia	6	3	--	--	--	--	6	3
Barbados	--	--	2	--	1	3	3	3
Russia	1	2	--	--	--	--	1	2
Total	7,684	13,868	692	686	472	422	8,848	14,976

^{1/} Includes Temples and tangelos.

SOURCE: See Page 47, Data Sources, Item 6.

FLORIDA CITRUS: Boxes of fruit processed by weeks, crop years 2005-06 and 2006-07 ^{1/}

Week ended 2006-07	Oranges		Grapefruit		Temples	
	2005-06	2006-07 ^{2/}	2005-06	2006-07	2005-06	2006-07
	<i>1,000 boxes</i>					
Sep	3	--	--	--	--	--
	10	--	--	--	--	--
	17	--	--	--	--	--
	24	--	--	--	2	--
Oct	1	--	6	--	8	--
	8	6	14	--	27	--
	15	9	52	--	194	--
	22	48	66	54	134	--
	29	78	66	187	138	--
Nov	5	108	88	454	164	--
	12	667	403	344	194	--
	19	956	1,169	396	99	--
	26	652	1,078	185	152	--
Dec	3	2,897	3,648	266	164	--
	10	4,089	4,790	324	224	--
	17	4,526	5,074	323	233	--
	24	3,419	4,436	254	179	--
	31	4,793	3,655	202	213	--
Jan	7	4,852	5,014	279	403	2
	14	6,166	5,750	417	386	12
	21	5,841	5,383	405	573	16
	28	5,479	5,024	446	690	15
Feb	4	4,420	4,650	498	759	17
	11	5,106	4,755	434	696	14
	18	5,021	3,030	561	884	30
	25	4,391	2,227	583	1,139	27
Mar	4	3,383	1,894	671	1,096	33
	11	3,511	2,003	714	1,180	53
	18	3,141	3,818	848	1,046	144
	25	3,837	4,554	935	1,043	96
Apr	1	4,827	4,511	829	932	14
	8	5,141	4,960	611	890	5
	15	4,996	4,744	511	949	5
	22	5,547	5,668	279	598	4
	29	5,396	5,447	139	324	3
May	6	5,284	5,094	84	252	1
	13	4,884	5,042	68	156	--
	20	4,539	4,627	2	42	--
	27	4,739	3,746	3	18	--
Jun	3	4,013	2,732	7	6	--
	10	3,662	1,781	5	5	--
	17	2,196	645	--	2	--
	24	2,676	30	32	--	--
	30	1,633	--	6	--	--
Jul Total		3,319	141	16	25	--
Remainder		138	206	14	19	--
Total		140,386	122,021	12,386	16,238	491
						541

^{1/} 2006-07 Preliminary.

^{2/} Includes Temples in 2006-07.

SOURCE: See Page 47, Data Sources, Item 6

FLORIDA CITRUS: Boxes of fruit processed by weeks, crop years 2005-06 and 2006-07 ^{1/}

Week ended 2006-07	Tangelos		Early Tangerines ^{2/}		Honey Tangerines	
	2005-06	2006-07	2005-06	2006-07	2005-06	2006-07
	<i>1,000 boxes</i>					
Sep	3	--	--	--	--	--
	10	--	--	--	--	--
	17	--	--	--	--	--
	24	--	--	--	--	--
Oct	1	--	--	--	3	--
	8	--	--	12	20	--
	15	--	--	16	31	--
	22	--	--	47	32	--
	29	--	--	29	34	--
Nov	5	--	--	42	39	--
	12	3	5	52	74	--
	19	16	10	84	59	--
	26	19	17	78	45	--
Dec	3	31	29	80	59	--
	10	39	39	83	69	4
	17	29	44	90	82	7
	24	12	62	87	73	--
	31	16	62	58	50	5
Jan	7	54	76	51	29	10
	14	95	152	50	20	19
	21	88	116	33	7	48
	28	97	71	15	2	41
Feb	4	65	52	7	1	37
	11	76	35	6	1	37
	18	93	22	5	2	33
	25	63	4	3	3	64
Mar	4	43	13	--	1	67
	11	7	10	1	3	43
	18	3	3	1	--	49
	25	1	--	--	--	63
Apr	1	3	--	2	--	71
	8	--	--	--	--	65
	15	--	--	--	--	68
	22	--	--	--	--	51
	29	--	--	4	--	57
May	6	--	--	--	--	49
	13	--	--	--	--	41
	20	--	--	--	--	21
	27	--	--	--	--	4
Jun	3	--	--	1	--	1
	10	--	--	--	--	--
	17	--	--	--	--	--
	24	--	--	--	--	--
	30	--	--	--	--	--
Jul Total		--	--	--	--	--
Remainder		--	--	--	--	--
Total		853	822	937	739	955
						789

^{1/} 2006-07 Preliminary.

^{2/} Fallglo and Sunburst varieties.

SOURCE: See page 47, Data Sources, Item 6.

FLORIDA CITRUS: Distribution of recorded utilization, by types, by months,
crop years 2002-03 through 2006-07

Crop year	Sep	Oct	Nov	Dec	Jan	Feb	Mar	Apr	May	Jun	Jul	Aug	Total
	<i>Percent</i>												
FRESH ORANGE SHIPMENTS													
2002-03	--	15	17	21	12	8	7	8	7	5	--	--	100
2003-04	--	9	17	19	9	7	10	11	10	8	--	--	100
2004-05	--	--	21	19	11	7	15	12	9	6	--	--	100
2005-06	--	3	18	21	12	10	10	9	8	6	3	--	100
2006-07 ^{1/}	--	7	21	16	11	10	10	8	9	8	--	--	100
PROCESSED ORANGE USAGE													
2002-03	--	--	12	17	19	9	10	16	13	4	--	--	100
2003-04	--	--	9	15	16	11	13	16	13	7	--	--	100
2004-05	--	--	4	15	17	14	11	18	14	7	--	--	100
2005-06	--	--	3	13	16	13	12	16	15	9	3	--	100
2006-07	--	--	5	15	19	11	13	17	17	3	--	--	100
FRESH GRAPEFRUIT SHIPMENTS													
2002-03	--	14	13	13	17	20	16	7	--	--	--	--	100
2003-04	--	10	13	13	17	19	18	7	3	--	--	--	100
2004-05	--	4	15	19	21	19	14	8	--	--	--	--	100
2005-06	--	3	13	16	20	18	20	10	--	--	--	--	100
2006-07	--	6	15	10	17	19	20	9	4	--	--	--	100
PROCESSED GRAPEFRUIT USAGE													
2002-03	--	4	5	8	15	22	28	15	3	--	--	--	100
2003-04	--	3	6	7	13	19	29	19	4	--	--	--	100
2004-05	--	3	8	12	16	22	25	14	--	--	--	--	100
2005-06	--	3	12	10	12	17	30	16	--	--	--	--	100
2006-07	--	3	4	5	12	20	30	21	5	--	--	--	100
FRESH TANGERINE SHIPMENTS													
2002-03	--	20	21	13	15	9	10	9	3	--	--	--	100
2003-04	4	9	20	19	13	10	14	11	--	--	--	--	100
2004-05	--	13	20	20	14	11	13	9	--	--	--	--	100
2005-06	--	10	16	22	14	9	12	11	6	--	--	--	100
2006-07	--	13	21	19	13	11	14	9	--	--	--	--	100
FRESH TANGELO SHIPMENTS													
2002-03	--	--	25	58	17	--	--	--	--	--	--	--	100
2003-04	--	--	23	59	15	3	--	--	--	--	--	--	100
2004-05	--	--	21	55	19	5	--	--	--	--	--	--	100
2005-06	--	--	20	51	22	7	--	--	--	--	--	--	100
2006-07	--	--	25	38	34	3	--	--	--	--	--	--	100
FRESH TEMPLE SHIPMENTS													
2002-03	--	--	--	--	55	35	10	--	--	--	--	--	100
2003-04	--	--	--	--	54	36	10	--	--	--	--	--	100
2004-05	--	--	--	--	44	45	11	--	--	--	--	--	100
2005-06	--	--	--	--	42	46	12	--	--	--	--	--	100
2006-07 ^{2/}	--	--	--	--	--	--	--	--	--	--	--	--	--

^{1/} Includes Temples in 2006-07.

^{2/} Included in fresh orange shipments in 2006-07.

CITRUS: Per capita consumption, United States, 1997-98 through 2006-07 ^{1/}

Crop Year	Fresh Citrus						Citrus Juices		
	Oranges & Temples	Grapefruit	Tangerines & tangelos	Lemons	Limes	Total ^{2/}	Orange	Other Citrus	Total ^{2/}
	<i>Pounds</i>						<i>Gallons, single strength</i>		
1997-98	14.61	5.94	2.17	2.46	1.40	26.58	5.74	0.74	6.48
1998-99	8.38	5.75	2.30	2.61	1.33	20.37	5.71	0.70	6.41
1999-00	11.74	5.09	2.86	2.44	1.39	23.52	5.60	0.69	6.30
2000-01	11.87	4.84	2.72	2.96	1.50	23.90	5.18	0.76	5.94
2001-02	11.73	4.62	2.55	3.33	1.10	23.33	5.05	0.62	5.66
2002-03	11.88	4.09	2.71	3.32	1.91	23.92	4.92	0.61	5.53
2003-04	10.78	4.13	2.76	3.12	1.88	22.67	4.95	0.53	5.49
2004-05	11.39	2.64	2.49	2.94	2.15	21.62	4.78	0.41	5.19
2005-06	10.23	2.30	2.68	4.14	2.20	21.54	4.40	0.38	4.78
2006-07 ^{3/}	7.32	2.12	2.39	2.52	2.40	16.75	4.13	0.44	4.57

^{1/} For oranges, Temples, tangerines, and tangelos, years begin in November, grapefruit in September, and lemons in August of first year shown. Lime year begins in April of second year shown.

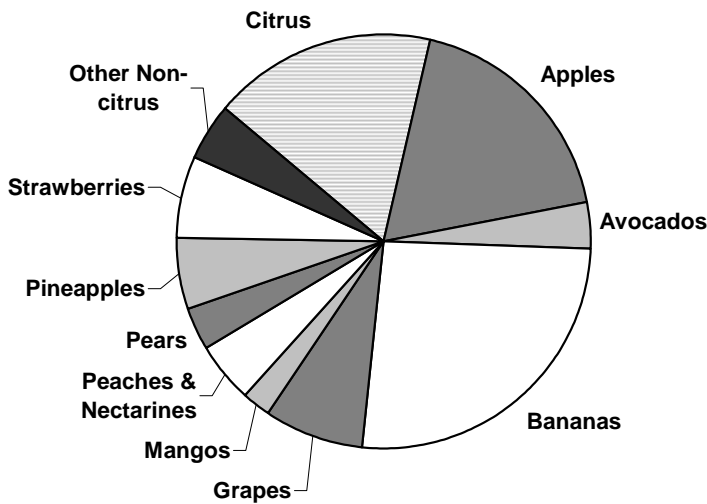
^{2/} Some figures may not add due to rounding.

^{3/} Preliminary.

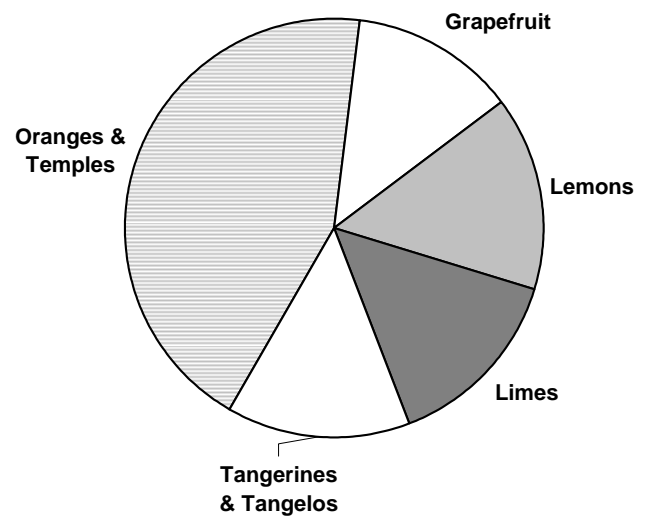
SOURCE: See Page 47, Data Sources, Item 9

Per Capita Consumption: Fresh Fruit and Selected Fruit Juices

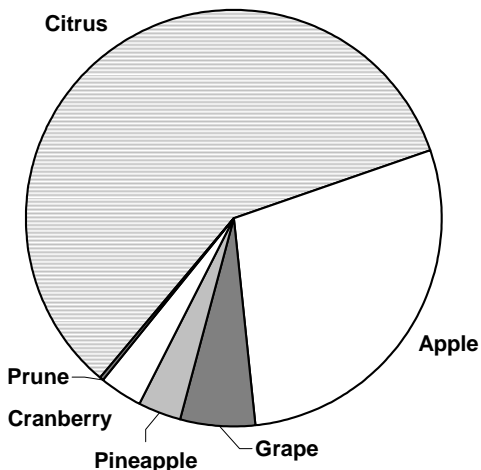
Fresh Fruit 2006 (Pounds)



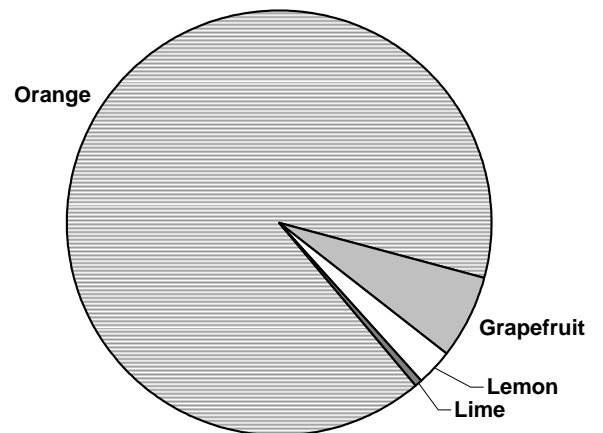
Fresh Citrus 2006-07 (Pounds)



Selected Fruit Juices 2006-07 (Gallons)



Selected Citrus Juices 2006-07 (Gallons)



**CITRUS FRUIT: Production, by selected countries, principal types,
crop years 2002-03 through 2006-07 ^{1/}**

Country	Crop years ^{2/}				
	2002-03	2003-04	2004-05	2005-06	2006-07
Oranges	<i>1,000 metric tons ^{3/}</i>				
Brazil	15,382	19,054	16,565	17,952	18,278
United States ^{4/}	10,527	11,734	8,419	8,196	6,881
China, Peoples Republic of	3,600	4,036	4,250	4,450	4,800
Mexico	3,734	3,901	4,000	3,500	3,600
Spain	2,950	3,052	2,691	2,295	3,210
Italy	1,723	1,835	2,105	2,261	2,358
Egypt	1,734	1,740	1,775	1,800	1,830
Turkey	1,250	1,250	1,300	1,400	1,400
South Africa, Republic of	1,148	1,113	1,038	1,130	1,100
Greece	1,145	550	764	1,017	880
Argentina	700	750	770	730	760
Morocco	800	705	813	784	740
Australia	407	453	547	444	450
Cuba	480	398	200	250	250
Israel	143	133	172	144	185
Cyprus	89	85	70	74	71
Japan	17	16	14	13	12
Total World	45,829	50,805	45,493	46,440	46,805
Grapefruit					
China, Peoples Republic of	1,526	1,642	1,800	1,867	2,020
United States	1,872	1,964	923	1,118	1,448
Mexico	281	409	304	350	320
South Africa, Republic of ^{5/}	256	264	287	280	290
Israel	255	237	271	265	241
Argentina	185	160	170	150	170
Turkey	125	135	135	150	110
Cyprus	39	39	38	42	39
Cuba	227	20	7	10	20
Italy	7	7	7	7	7
Total World	4,773	4,877	3,942	4,239	4,665
Tangerines					
China, Peoples Republic of	6,545	6,870	8,550	8,050	9,000
Spain	2,025	2,060	2,458	2,126	2,634
Japan ^{6/}	1,332	1,330	1,249	1,290	1,096
Turkey	590	550	670	700	700
Korea, Republic of	690	630	594	658	618
Italy	540	528	611	617	612
Egypt	504	478	481	483	484
Morocco ^{7/}	478	408	443	454	479
Argentina	380	420	430	400	450
United States ^{8/}	443	419	367	435	348
Israel	71	88	141	118	139
Greece	79	53	56	81	67
Cuba	3	4	2	4	4
Total World	13,680	13,838	16,052	15,416	16,631
Lemons					
Argentina	1,200	1,220	1,300	1,350	1,250
Spain	920	1,130	729	897	900
Turkey	525	550	600	600	750
United States	931	724	789	855	655
Italy	528	534	583	603	576
South Africa, Republic of	182	183	183	200	200
Israel	20	45	42	29	38
Other ^{9/}	150	108	82	85	80
Total World	4,456	4,494	4,308	4,619	4,449

^{1/} Forecast.

^{2/} Crop years refers to harvest and marketing period, which usually begins in the fall and extends to the spring.

^{3/} One metric ton is equivalent to 2,204.6 pounds.

^{4/} Includes Temples.

^{5/} Includes small quantities of tangerines.

^{6/} Mainly Satsumas, but also including mandarin hybrids.

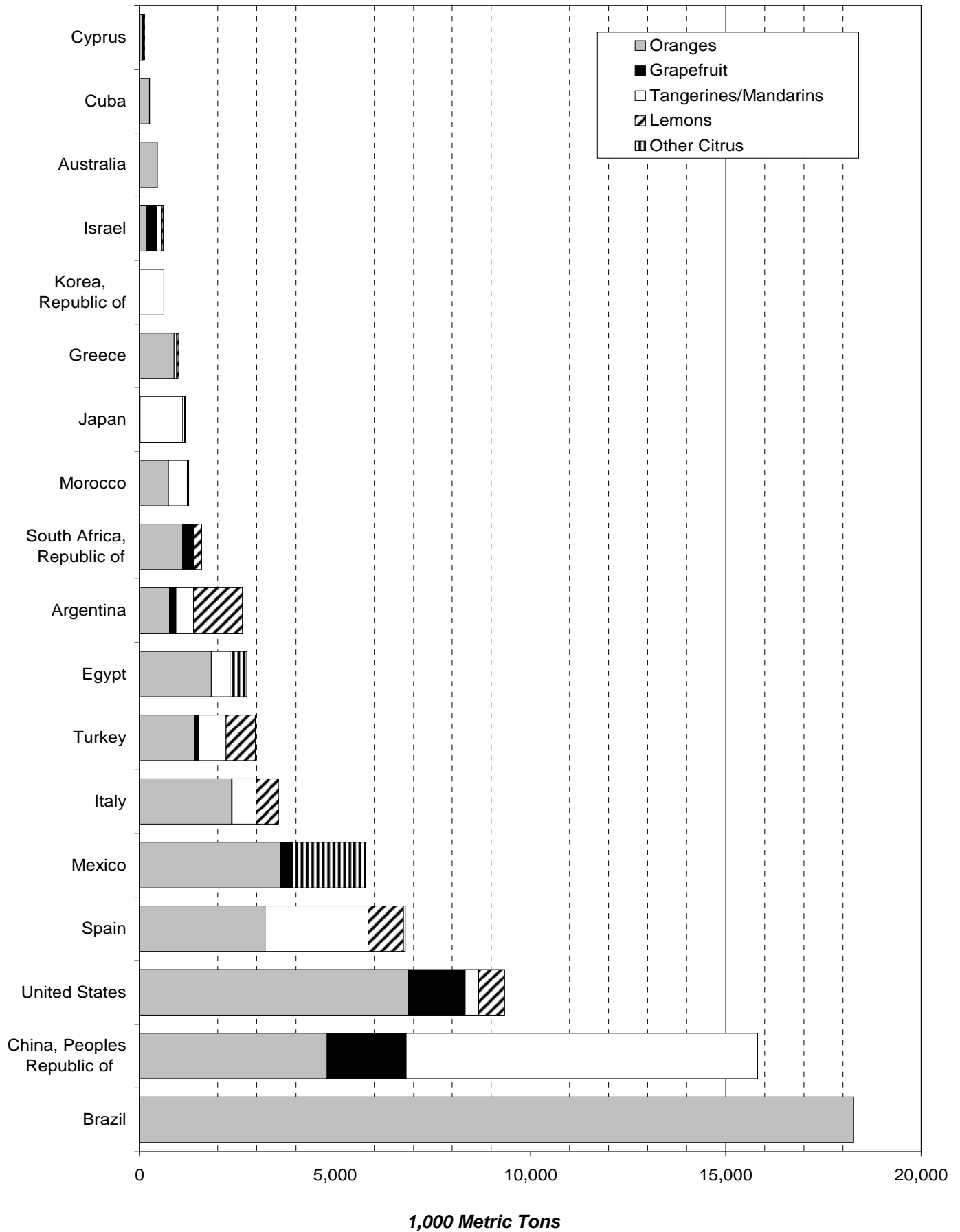
^{7/} Clementines only.

^{8/} Includes tangelos.

^{9/} Greece, Cyprus, Morocco, and Japan.

SOURCE: See Page 47, Data Sources, Item 5.

World Citrus Production by Selected Countries, 2006-07



**U. S. DEPARTMENT OF AGRICULTURE
NATIONAL AGRICULTURAL STATISTICS SERVICE**

1400 Independence Ave. SW
Washington, D.C. 20250
1-800-727-9540

<http://www.nass.usda.gov/>
STATE FIELD OFFICES ^{1/}

ALABAMA

P.O. Box 240578
Montgomery 36124-0578
334-279-3555

ALASKA ^{2/}

P.O. Box 799
Palmer 99645-0799
907-745-4272

ARIZONA

230 North 1st Ave., Ste.
303
Phoenix 85003-1706
602-280-8850

ARKANSAS

10800 Financial Centre
Pkwy.,
Ste 110
Little Rock 72211-3543
501-228-9926

CALIFORNIA

P.O. Box 1258
Sacramento 95812-1258
916-498-5161

COLORADO

P.O. Box 150969
Lakewood 80215-0969
303-236-2300

DELAWARE

2320 S. Dupont Hwy.
Dover 19901-5515
302-698-4537

FLORIDA

P.O. Box 530105
Orlando 32853-0105
407-648-6013

GEORGIA

355 E. Hancock Ave.,
Ste. 320
Athens 30601-2768
706-546-2236

HAWAII ^{2/}

1428 South King Street
Honolulu 96814-2512
808-973-2907

IDAHO

P.O. Box 1699
Boise 83701-1699
208-334-1507

ILLINOIS

P.O. Box 19283
Springfield 62794-9283
217-492-4295

INDIANA

1435 Win Henschel Blvd.,
Ste 110
West Lafayette 47906-4151
765-494-8371

IOWA

833 Federal Bldg.
210 Walnut Street
Des Moines 50309
515-284-4340

KANSAS

P.O. Box 3534
Topeka 66601-3534
785-233-2230

KENTUCKY

P.O. Box 1120
Louisville 40201-1120
502-582-5293

LOUISIANA

P.O. Box 65038
Baton Rouge 70896-5038
225-922-1362

MARYLAND

50 Harry. S. Truman Pkwy.,
Ste. 202
Annapolis 21401-8960
410-841-5740

MICHIGAN

P.O. Box 26248
East Lansing 48909-6248
517-324-5300

MINNESOTA

P.O. Box 7068
St. Paul 55107-0068
651-296-2230

MISSISSIPPI

P.O. Box 980
Jackson 39205-0980
601-965-4575

MISSOURI

P.O. Box L
Columbia 65205-5011
573-876-0950

MONTANA

10 West 15th St., Ste. 3100
Helena 59626-9706
406-441-1240

NEBRASKA

P.O. Box 81069
Lincoln 68501-1069
402-437-5541

NEVADA

P.O. Box 8880
Reno 89507-8880
775-972-6001

NEW ENGLAND

(CT, ME, MA, NH,
RI, and VT)
53 Pleasant Street, 2nd Floor
Concord, NH 03302-9902
603-224-9639

NEW JERSEY

P.O. Box 330
Trenton 08625-0330
609-292-6385

NEW MEXICO

P.O. Box 1809
Las Cruces 88004-1809
505-522-6023

NEW YORK

10 B Airline Drive
Albany 12235
518-457-5570

NORTH CAROLINA

P.O. Box 27767
Raleigh 27611-7767
919-856-4394

NORTH DAKOTA

P.O. Box 3166
Fargo 58108-3166
701-239-5306

OHIO

P.O. Box 686
Reynoldsburg 43068-0686
614-728-2100

OKLAHOMA

2800 N. Lincoln Blvd.
Oklahoma City 73105
405-522-6190

OREGON

1220 S.W. Third Ave.,
1735 Federal Bldg.
Portland 97204-2833
503-326-2131

PENNSYLVANIA

2301 N. Cameron St.,
Rm. G-19
Harrisburg 17110-9405
717-787-3904

PUERTO RICO

P.O. Box 10163
Santurce 00908-1163
787-723-3773

SOUTH CAROLINA

P.O. Box 1911
Columbia 29202-1911
803-765-5333

SOUTH DAKOTA

P.O. Box 5068
Sioux Falls 57117-5068
605-323-6500

TENNESSEE

P.O. Box 41505
Nashville 37204-1505
615-781-5300

TEXAS

P.O. Box 70
Austin 78767-0070
512-916-5581

UTAH

P.O. Box 25007
Salt Lake City
84125-0007
801-524-5003

VIRGINIA

P.O. Box 1659
Richmond 23218-1659
804-771-2493

WASHINGTON

P.O. Box 609
Olympia 98507-0609
360-902-1940

WEST VIRGINIA ^{3/}

1900 Kanawha Blvd.
E.
Charleston 25305-0170
304-345-5958

WISCONSIN

P.O. Box 8934
Madison 53708-8934
608-224-4848

WYOMING

P.O. Box 1148
Cheyenne 82003-1148
307-432-5600

^{1/} State Websites can be accessed through the main NASS USDA Website.

^{2/} Use Priority Mail for all Correspondence to Alaska and Hawaii

^{3/} For West Virginia, UPS/Feb Ex (BULK.FREIGHT), mail to: 4720 Brenda Lane, Building 2, Room 203 (Zip Code 25312)

DATA SOURCES

All data in this summary are official statistics of the United States Department of Agriculture issued by the National Agricultural Statistics Service, except when another source is shown.

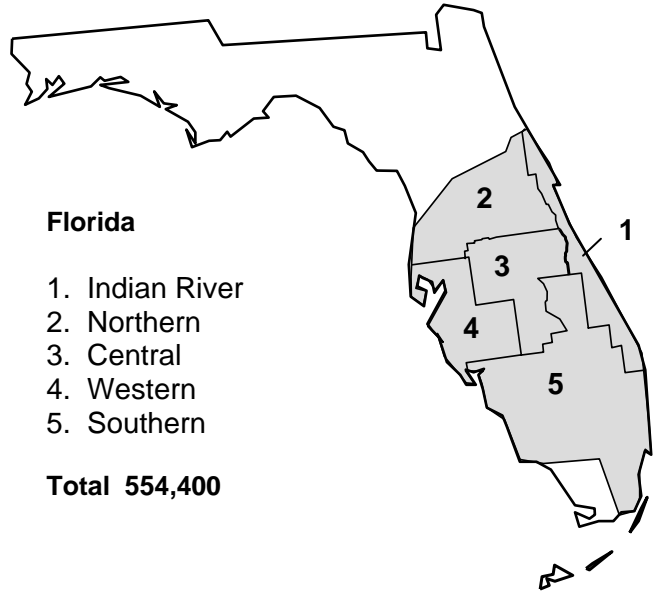
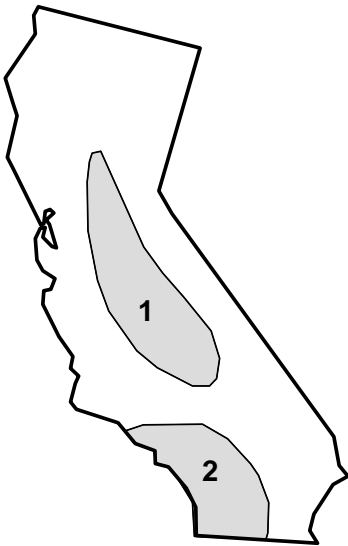
1. Florida Department of Citrus
P.O. Box 148
Lakeland, Florida 33802-0148
Economic and Market Research Home Page
<http://www.floridajuice.com>
2. Hume, H. Harold, The Cultivation of Citrus Fruits
(New York: The Macmillan Co., 1926)
3. Florida Citrus Processors Association
P.O. Box 780
Winter Haven, Florida 33882-0780
<http://www.fcplanet.org>
4. United States Department of Agriculture
National Agricultural Statistics Service
1400 Independence Ave., SW
Washington, D.C. 20250
<http://www.nass.usda.gov>
5. United States Department of Agriculture
Foreign Agricultural Service
1400 Independence Ave., SW
Washington, D.C. 20250
<http://www.fas.usda.gov>
6. Florida Department of Agriculture and Consumer Services
Division of Fruit and Vegetables
P.O. Box 1072
Winter Haven, Florida 33882-1072
<http://www.doacs.state.fl.us/fruits/index.html>
7. Citrus Administrative Committee
P.O. Box 24508
Lakeland, Florida 33802-4508
<http://www.citrusadministrativecommittee.org>
8. Florida Citrus Mutual
P.O. Box 89
Lakeland, Florida 33802-0089
<http://www.flcitrusmutual.com>
9. United States Department of Agriculture
Economic Research Service
1800 M Street NW
Washington, D.C. 20036-5831
<http://www.ers.usda.gov>
10. University of Florida
Gainesville, FL 32611
<http://fawn.ifas.ufl.edu/>

U. S. CITRUS PRODUCTION AREAS AND BEARING ACREAGE

California

1. San Joaquin Valley
2. Southern California

Total 251,500 acres



Florida

1. Indian River
2. Northern
3. Central
4. Western
5. Southern

Total 554,400

Texas

1. Lower Rio Grande Valley

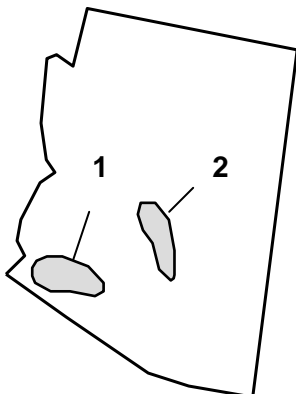
Total 27,300 acres



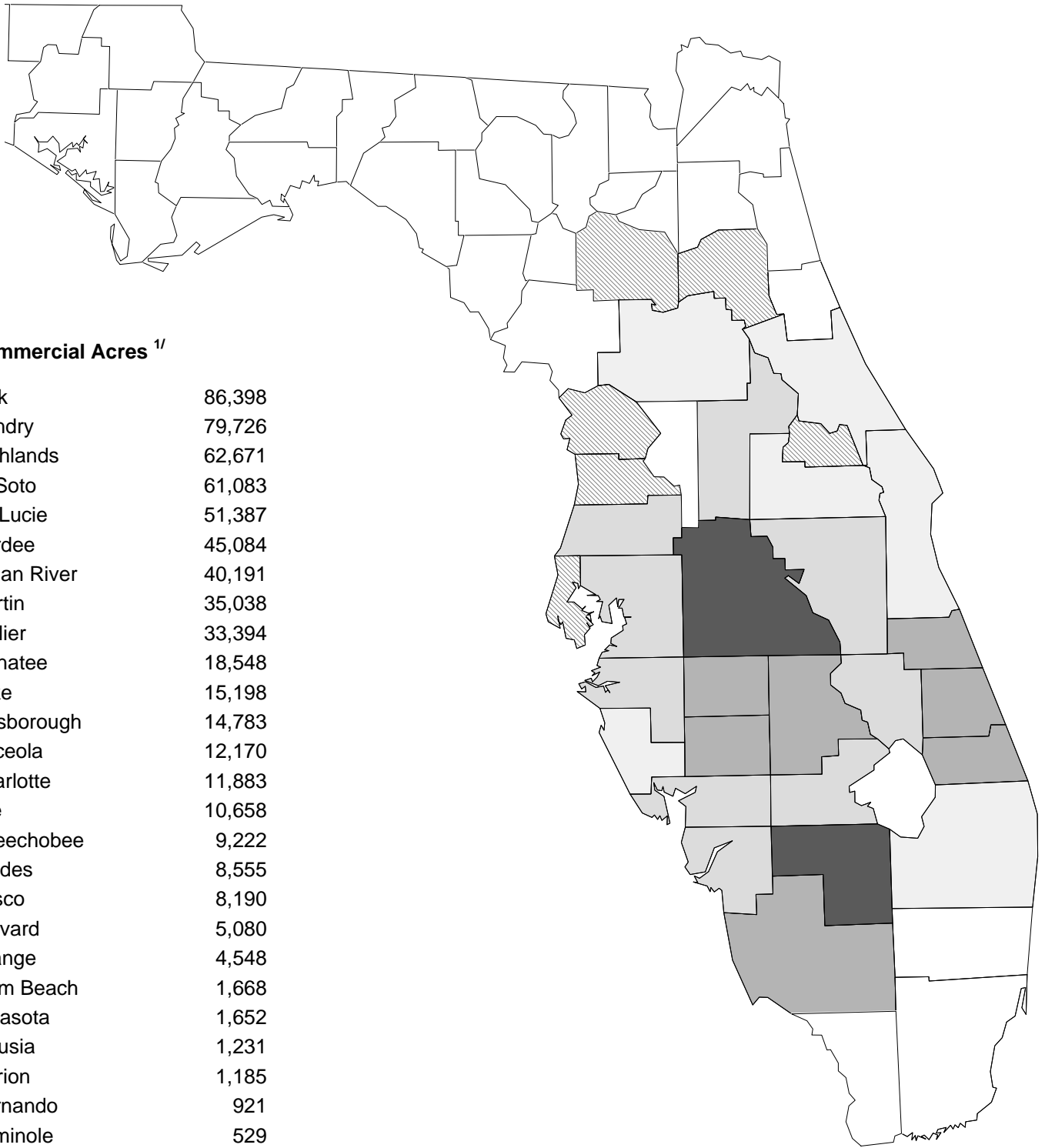
Arizona

1. Western
2. Central

Total 23,000



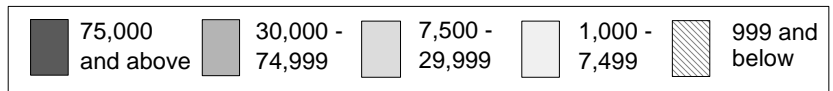
COMMERCIAL CITRUS ACREAGE 2006



Commercial Acres ^{1/}

Polk	86,398
Hendry	79,726
Highlands	62,671
DeSoto	61,083
St. Lucie	51,387
Hardee	45,084
Indian River	40,191
Martin	35,038
Collier	33,394
Manatee	18,548
Lake	15,198
Hillsborough	14,783
Osceola	12,170
Charlotte	11,883
Lee	10,658
Okeechobee	9,222
Glades	8,555
Pasco	8,190
Brevard	5,080
Orange	4,548
Palm Beach	1,668
Sarasota	1,652
Volusia	1,231
Marion	1,185
Hernando	921
Seminole	529
Putnam	182
Citrus	145
Other ^{2/}	53

TOTAL 621,373



^{1/} Excludes Miami-Dade and Broward Counties.

^{2/} Alachua and Pinellas Counties.