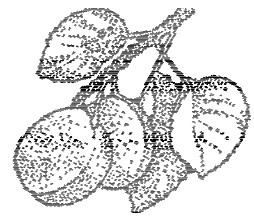


2004 California Prune (Dried Plum) Forecast



Released: June 4, 2004



CALIFORNIA AGRICULTURAL
STATISTICS SERVICE

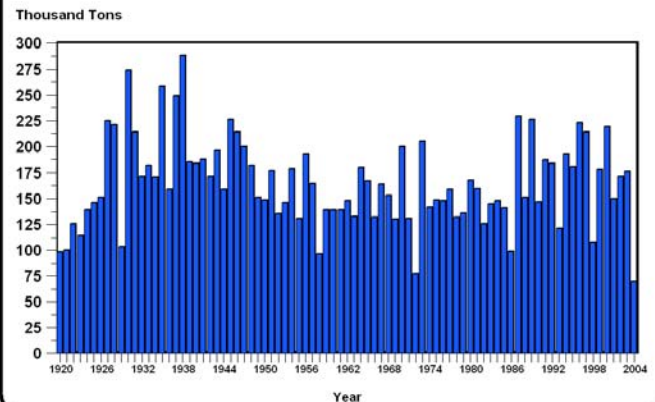
The 2004 California prune (dried plum) crop is forecast to be 70 thousand tons, down 60 percent from the 176 thousand tons in 2003. Total 2004 bearing acreage is estimated at 70,000. The French prune variety accounts for 97 percent of all prune acreage grown in California. The production forecast is based on a survey of prune growers conducted by the California Agricultural Statistics Service (CASS) from May 1-29, 2004. The acreage estimate is based on a survey of prune growers conducted by CASS from January through May 2004.

CASS designed the survey using a stratified random sampling scheme based on total prune acreage for each operator and analyzed the data. The sample is designed to give a State estimate of production for all growers.

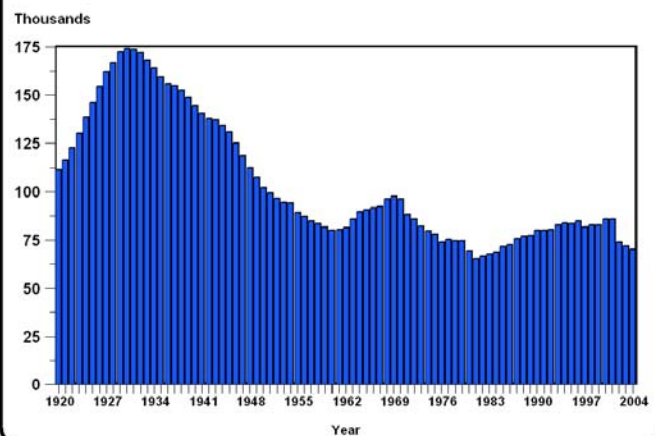
Questionnaires were mailed to growers on April 29, 2004 with return requested by May 13. Non-respondents were telephoned. Responses were received from 282 growers representing 51 percent of the total bearing acreage.

The 2004 prune crop suffered significant damage from a mid-March hot spell. The heat occurred when trees were in full bloom which caused blossoms to mature too quickly for the pollination process to complete. If the forecast is realized, this year's crop would be the smallest on record since official estimates began in 1920. Yield would be the lowest since 1972.

California Prune Production - 1920-2004
(Dried Basis)



California Prune Bearing Acres - 1920-2004



California Prune (Dried Plum) Acreage, Production and Value, 1990-2004

Year	Bearing	Non-Bearing	Production	Yield Per Acre	Price Per Ton	Value of Production
	<i>Acres</i>		<i>Tons</i>		<i>Dollars</i>	<i>1,000 Dollars</i>
1990	80,100	5,800	147,000	1.84	873.00	128,331
1991	80,200	6,500	187,000	2.33	940.00	175,780
1992	80,400	8,000	184,000	2.29	1,030.00	189,520
1993	83,000	11,000	121,000	1.46	1,120.00	135,520
1994	84,000	18,800	193,000	2.30	1,090.00	210,370
1995	83,500	23,200	181,000	2.17	1,040.00	188,240
1996	85,000	23,700	223,000	2.62	839.00	187,097
1997	82,000	21,300	214,000	2.61	883.00	181,015
1998	83,000	26,000	108,000	1.30	764.00	78,692
1999	83,000	22,000	178,000	2.14	861.00	142,065
2000	86,000	15,000	219,000	2.55	770.00	154,770
2001	86,000	11,000	150,000	1.74	726.00	98,010
2002	74,000	9,000	172,000	2.32	810.00	132,030
2003	72,000	8,000	176,000	2.44	730.00	117,530
2004 a/	70,000	N/A	70,000	1.00	N/A	N/A

a/ Forecast

Source: California Agricultural Statistics Service

VIC TOLOMEO
Director

JACK RUTZ
Deputy Director

GARY NELSON -- SHAWN CLARK
Agricultural Statisticians, Estimates Group

Comments or questions should be directed to:

California Agricultural Statistics Service (CASS)
P.O. Box 1258
Sacramento, CA 95812
(916) 498-5161
(916) 498-5186 (FAX)

California's reports are available on the Internet at http://www.nass.usda.gov/ca listed under Publications.
--