



California Crop Progress & Condition

Cooperating with the California Department of Food and Agriculture
Pacific Region • 650 Capitol Mall, Suite 6-100 • Sacramento, CA 95814 • (916) 738-6600 • (855) 270-2722 FAX •
www.nass.usda.gov/ca

WEEK ENDING: November 17, 2024
RELEASED: November 18, 2024

FREQUENCY: Weekly
VOL. 44 NO. 86

WEATHER

Temperature and precipitation information for California are not available this week.

FIELD CROPS

In the Sacramento Valley, winter **wheat** planting was completed. Some harvested rice fields were flooded so stubble remaining in the field could decompose. In the San Joaquin Valley, **cotton** harvest was winding down. Rain in the area temporarily stalled harvest. In Tulare County, cotton and **black-eyed bean** harvests neared completion. Some **alfalfa** fields were cut for hay and others were green chopped for local dairies. Harvested corn fields were fertilized and tilled in preparation for winter wheat planting.

FRUIT CROPS

The stone fruit harvest was complete except for late variety **plums**. Some orchards were fumigated in preparation for replanting fruit trees. Fall fruit harvest continued with **persimmons, quince, pomegranates, Asian pears, and kiwi**. Late variety table **grape** harvest neared completion. District 3 **lemon** harvest continued, and District 1 harvest was ramping up. The Desert Rio **grapefruit** and **pomelo** harvests continued in Riverside County and the San Joaquin Valley. Navel **orange** and **mandarin** harvests continued. The summer heat wave resulted in smaller sized oranges to start the Navel season. Navel crops were checked for Fuller rose beetle, California red scale and thrips. The Mountain Fire in Ventura County damaged avocado trees and strong winds caused fruit to fall off the trees. **Raspberry, blackberry, and strawberry** harvests continued along the Central Coast.

NUT CROPS

Almond, walnut, and pistachio harvests were mostly complete, and orchards were prepped for winter. **Pecan** harvest continued. Almonds, walnuts, and pistachios were sprayed with herbicides and insecticides.

VEGETABLE CROPS

In the Central Valley, **peppers, sweet potatoes, garlic, carrots, bell peppers** and **onions** were harvested and sold at local stands. Daikon **radishes** continued to develop. Harvested fields were tarping to treat for nematodes before next spring plantings. Along the Central Coast, **broccoli, brussel sprouts, cauliflower, celery, kale, garlic, and lettuce** continued to be harvested. Recent rain and heat from a month ago impacted the quality of broccoli in the Salinas Valley. In the Imperial Valley, bell peppers, **eggplant, cantaloupe, honeydew, and chili peppers** were harvested.

LIVESTOCK

Rangeland and non-irrigated pasture remained in poor to fair condition despite recent precipitation. Irrigated pasture was reported to be in good condition. Movement of cattle down from higher elevation range was underway. Fall lambing season continued. Sheep grazed retired cropland and harvested vegetable fields. Bees were moved into the state to overwinter and in preparation for the almond bloom.

CALIFORNIA CROP WEATHER – WEEK ENDING NOVEMBER 17, 2024

STATIONS	TEMPERATURE				GROWING DEGREE DAYS AT 50 °F BASE		RAIN DAYS ¹	PRECIPITATION ²			
	Average for Week Ending Nov 17, 2024	Departure from Normal ³	High	Low	This Year	Normal Year ³	This Season	This Week	This Season	Normal Season ³	Normal Year ³
					Jan 1 - Nov 17, 2024	Jan 1 - Nov 17, 2024	Oct 1 - Nov 17, 2024	Week Ending Nov 17, 2024	Oct 1 - Nov 17, 2024	Oct 1 - Nov 17, 2024	Oct 1 - Sept 30
-- Degrees Fahrenheit --				-- Number --		-- Days --	-- Inches of Precipitation --				
North Coast											
Eureka WFO	NA	NA	NA	NA	NA	NA	NA	NA	NA	NA	40.61
Ukiah	NA	NA	NA	NA	NA	NA	NA	NA	NA	NA	35.07
Santa Rosa	NA	NA	NA	NA	NA	NA	NA	NA	NA	NA	34.00
Napa State Hospital	NA	NA	NA	NA	NA	NA	NA	NA	NA	NA	20.36
Central Coast											
San Francisco	NA	NA	NA	NA	NA	NA	NA	NA	NA	NA	19.77
San Jose	NA	NA	NA	NA	NA	NA	NA	NA	NA	NA	13.58
Salinas	NA	NA	NA	NA	NA	NA	NA	NA	NA	NA	12.66
Monterey	NA	NA	NA	NA	NA	NA	NA	NA	NA	NA	16.36
Paso Robles	NA	NA	NA	NA	NA	NA	NA	NA	NA	NA	12.24
Sacramento Valley											
Redding	NA	NA	NA	NA	NA	NA	NA	NA	NA	NA	33.70
Red Bluff	NA	NA	NA	NA	NA	NA	NA	NA	NA	NA	23.25
Orland	NA	NA	NA	NA	NA	NA	NA	NA	NA	NA	21.52
Oroville	NA	NA	NA	NA	NA	NA	NA	NA	NA	NA	25.84
Marysville	NA	NA	NA	NA	NA	NA	NA	NA	NA	NA	20.21
Sacramento	NA	NA	NA	NA	NA	NA	NA	NA	NA	NA	18.10
San Joaquin Valley											
Stockton	NA	NA	NA	NA	NA	NA	NA	NA	NA	NA	13.53
Modesto	NA	NA	NA	NA	NA	NA	NA	NA	NA	NA	12.34
Merced	NA	NA	NA	NA	NA	NA	NA	NA	NA	NA	11.87
Madera	NA	NA	NA	NA	NA	NA	NA	NA	NA	NA	10.86
Fresno	NA	NA	NA	NA	NA	NA	NA	NA	NA	NA	11.05
Lemoore	NA	NA	NA	NA	NA	NA	NA	NA	NA	NA	7.23
Visalia	NA	NA	NA	NA	NA	NA	NA	NA	NA	NA	10.37
Bakersfield	NA	NA	NA	NA	NA	NA	NA	NA	NA	NA	6.40
Cascade Sierra											
Alturas	NA	NA	NA	NA	NA	NA	NA	NA	NA	NA	11.72
Mount Shasta	NA	NA	NA	NA	NA	NA	NA	NA	NA	NA	37.86
Blue Canyon	NA	NA	NA	NA	NA	NA	NA	NA	NA	NA	62.80
Yosemite Valley	NA	NA	NA	NA	NA	NA	NA	NA	NA	NA	40.65
South Coast											
Santa Maria	NA	NA	NA	NA	NA	NA	NA	NA	NA	NA	13.42
Santa Barbara	NA	NA	NA	NA	NA	NA	NA	NA	NA	NA	17.38
Oxnard	NA	NA	NA	NA	NA	NA	NA	NA	NA	NA	13.05
Riverside	NA	NA	NA	NA	NA	NA	NA	NA	NA	NA	9.48
Los Angeles	NA	NA	NA	NA	NA	NA	NA	NA	NA	NA	12.33
San Diego	NA	NA	NA	NA	NA	NA	NA	NA	NA	NA	9.87
Southeast Interior											
Bishop	NA	NA	NA	NA	NA	NA	NA	NA	NA	NA	4.87
Daggett	NA	NA	NA	NA	NA	NA	NA	NA	NA	NA	3.80
Lancaster	NA	NA	NA	NA	NA	NA	NA	NA	NA	NA	6.86
Thermal	NA	NA	NA	NA	NA	NA	NA	NA	NA	NA	2.98
Blythe	NA	NA	NA	NA	NA	NA	NA	NA	NA	NA	3.58
Imperial	NA	NA	NA	NA	NA	NA	NA	NA	NA	NA	2.39

¹ Total number of days with precipitation events this season.

² Rain or melted snow/ice.

³ Normal periods 1990-2020 used in departure from normal calculations.

(NA) Not available at time of publication.

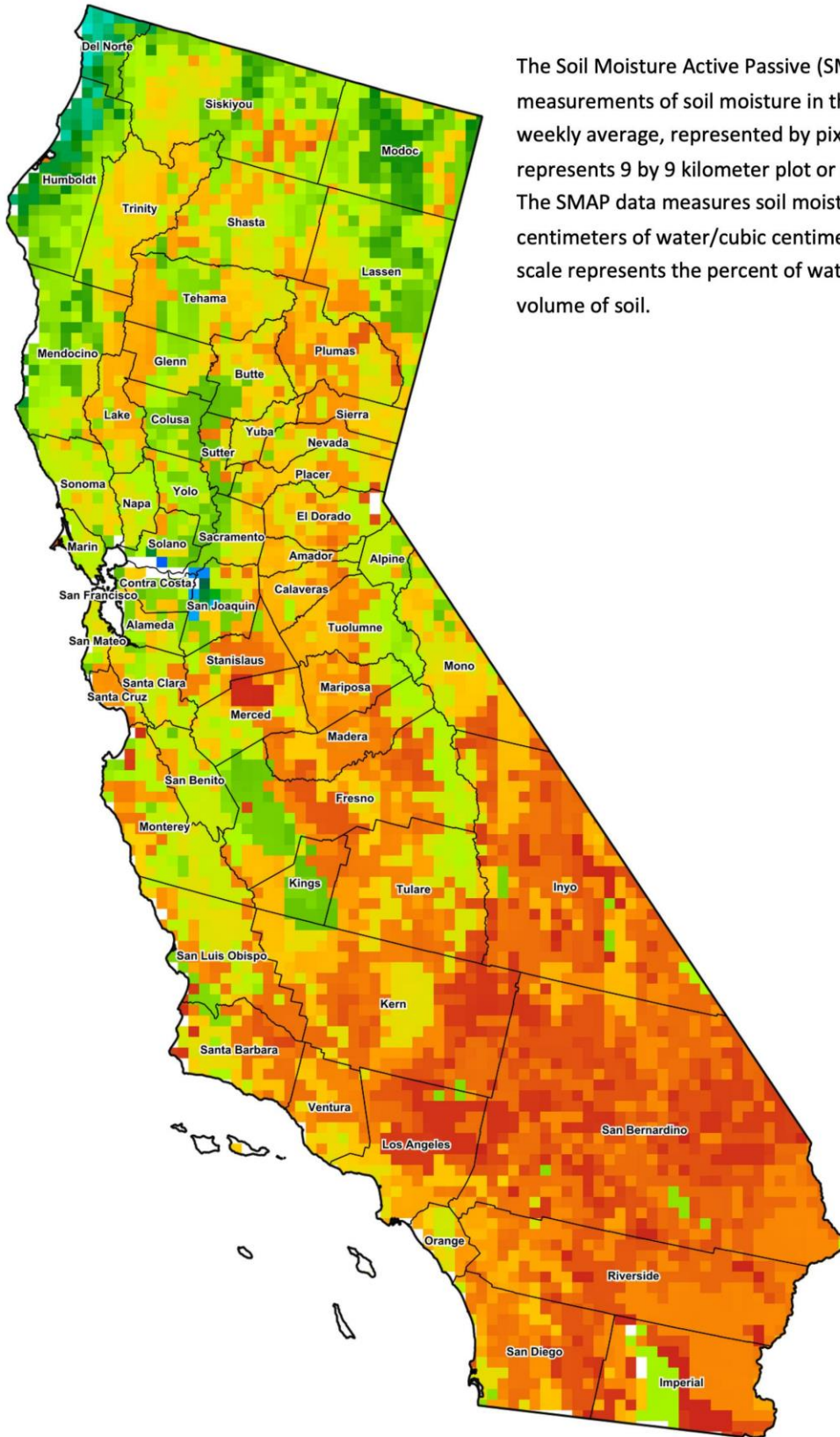
Data retrieved from NOAA and NWS. Calculated by USDA NASS.

All rights reserved.

Reservoir Data from the California Department of Water Resources

Reservoir	Capacity	Nov 18, 2024			This Date Last Year	
		Storage	Percent of Capacity	Percent of Average	Storage	Percent of Capacity
	<i>Acre Feet</i>	<i>Acre Feet</i>	<i>Percent</i>	<i>Percent</i>	<i>Acre Feet</i>	<i>Percent</i>
Shasta Lake	4,547,300	2,525,789	55	104	3,102,924	68
Lake Oroville	3,537,400	1,645,714	47	93	2,352,291	66
Trinity Lake	2,443,800	1,603,603	66	114	1,209,861	49
New Melones Reservoir	2,413,000	1,803,661	75	140	1,908,476	80
San Luis Reservoir	2,057,200	1,050,826	51	106	1,230,151	60
Don Pedro Reservoir	2,030,000	1,403,573	69	105	1,633,586	80

Source: cdec.water.ca.gov/reportapp/javareports?name=DLYHYDRO



The Soil Moisture Active Passive (SMAP) provides measurements of soil moisture in the root zone as a weekly average, represented by pixels. Each pixel represents 9 by 9 kilometer plot or about 20,000 acres. The SMAP data measures soil moisture in cubic centimeters of water/cubic centimeters of soil. The scale represents the percent of water in a given volume of soil.



Drought Conditions from the U.S. Drought Monitor as of 11/12/2024

Time	Percent of Land in Drought Rating						Drought Severity (DSCI)
	None	D0	D1	D2	D3	D4	
Current	25.51	57.48	11.50	4.56	0.95	0.00	98
Last Week	25.53	62.21	7.95	4.30	0.00	0.00	91
3 Months Ago	77.29	17.40	5.32	0.00	0.00	0.00	28
One Year Ago	95.32	4.68	0.00	0.00	0.00	0.00	5

The U.S. Drought Monitor is jointly produced by the National Drought Mitigation Center at the University of Nebraska-Lincoln, the United States Department of Agriculture, and the National Oceanic and Atmospheric Administration. droughtmonitor.unl.edu/CurrentMap/StateDroughtMonitor.aspx?CA