



# California Crop Progress & Condition

Cooperating with the California Department of Food and Agriculture  
Pacific Region • 650 Capitol Mall, Suite 6-100 • Sacramento, CA 95814 • (916) 738-6600 • (855) 270-2722 FAX •  
[www.nass.usda.gov/ca](http://www.nass.usda.gov/ca)

**WEEK ENDING: November 10, 2024**  
**RELEASED: November 12, 2024**

**FREQUENCY: Weekly**  
**VOL. 44 NO. 85**

## WEATHER

Temperature and precipitation information for California are not available this week.

## FIELD CROPS

In the Sacramento Valley, **rice** harvest was complete. In the San Joaquin Valley, **cotton** harvest and ginning progressed. In Tulare County, **corn** fields were in the final stages of production, with most fields harvested. Harvested fields were fertilized and tilled for winter wheat planting. Cotton and black-eyed **bean** harvests neared completion. Some alfalfa fields were cut for hay and others were green chopped for local dairies. **Potatoes** continued to develop.

## FRUIT CROPS

The stone fruit harvest was complete except for late variety **plums**. Fall fruit harvest continued with **persimmons**, **quince**, **pomegranates**, Asian **pears**, and **kiwi**. Late variety table **grape** harvest continued, while some that were left on the vine were picked for juice. District 3 **lemon** harvest continued, and District 1 harvest began. The Desert Rio **grapefruit** and **pomelo** harvests continued in Riverside County and the San Joaquin Valley. Navel **orange** harvest continued. Growers sprayed copper, lime, and zinc before possible rainfall. **Raspberry**, **blackberry**, and **strawberry** harvests continued along the Central Coast.

## NUT CROPS

**Almond** and **pistachio** harvests neared completion, and orchards were prepped for winter. **Walnut** and **pecan** harvests continued. Almonds, walnuts, and pistachios were sprayed with herbicides and insecticides.

## VEGETABLE CROPS

In the San Joaquin Valley, **broccoli**, **cantaloupe**, **honeydew**, and **squash** harvests continued. In the Central Valley, melons, **sweet corn**, **eggplant**, **peppers**, **sweet potatoes**, **squash**, **tomatoes**, **beans**, **garlic**, **carrots**, **bell peppers** and **onions** were harvested and sold at local stands. Along the Central Coast, broccoli, **brussels sprouts**, **cauliflower**, **celery**, **kale**, garlic, squash, and **lettuce** continued to be harvested. The Diamondback moth issue and insect pressure has restricted availability of broccoli. In the Imperial Valley, bell peppers, cantaloupe, and **chili peppers** were harvested.

## LIVESTOCK

Rangeland and non-irrigated pasture remained in poor to fair condition despite recent precipitation. Irrigated pasture was reported to be in good condition. Movement of cattle down from higher elevation range was underway. Fall calving and lambing season continued. Sheep grazed retired cropland and harvested vegetable fields. Bees were moved into the state to overwinter and in preparation for the almond bloom.

**CALIFORNIA CROP WEATHER – WEEK ENDING NOVEMBER 10, 2024**

STATIONS	TEMPERATURE				GROWING DEGREE DAYS AT 50 °F BASE		RAIN DAYS <sup>1</sup>	PRECIPITATION <sup>2</sup>			
	Average for Week Ending Nov 10, 2024	Departure from Normal <sup>3</sup>	High	Low	This Year	Normal Year <sup>3</sup>	This Season	This Week	This Season	Normal Season <sup>3</sup>	Normal Year <sup>3</sup>
					Jan 1 - Nov 10, 2024	Jan 1 - Nov 10, 2024	Oct 1 - Nov 10, 2024	Week Ending Nov 10, 2024	Oct 1 - Nov 10, 2024	Oct 1 - Nov 10, 2024	Oct 1 - Sept 30
	-- Degrees Fahrenheit --				-- Number --		-- Days --	-- Inches of Precipitation --			
<b>North Coast</b>											
Eureka WFO	NA	NA	NA	NA	NA	NA	NA	NA	NA	NA	40.61
Ukiah	NA	NA	NA	NA	NA	NA	NA	NA	NA	NA	35.07
Santa Rosa	NA	NA	NA	NA	NA	NA	NA	NA	NA	NA	34.00
Napa State Hospital	NA	NA	NA	NA	NA	NA	NA	NA	NA	NA	20.36
<b>Central Coast</b>											
San Francisco	NA	NA	NA	NA	NA	NA	NA	NA	NA	NA	19.77
San Jose	NA	NA	NA	NA	NA	NA	NA	NA	NA	NA	13.58
Salinas	NA	NA	NA	NA	NA	NA	NA	NA	NA	NA	12.66
Monterey	NA	NA	NA	NA	NA	NA	NA	NA	NA	NA	16.36
Paso Robles	NA	NA	NA	NA	NA	NA	NA	NA	NA	NA	12.24
<b>Sacramento Valley</b>											
Redding	NA	NA	NA	NA	NA	NA	NA	NA	NA	NA	33.70
Red Bluff	NA	NA	NA	NA	NA	NA	NA	NA	NA	NA	23.25
Orland	NA	NA	NA	NA	NA	NA	NA	NA	NA	NA	21.52
Oroville	NA	NA	NA	NA	NA	NA	NA	NA	NA	NA	25.84
Marysville	NA	NA	NA	NA	NA	NA	NA	NA	NA	NA	20.21
Sacramento	NA	NA	NA	NA	NA	NA	NA	NA	NA	NA	18.10
<b>San Joaquin Valley</b>											
Stockton	NA	NA	NA	NA	NA	NA	NA	NA	NA	NA	13.53
Modesto	NA	NA	NA	NA	NA	NA	NA	NA	NA	NA	12.34
Merced	NA	NA	NA	NA	NA	NA	NA	NA	NA	NA	11.87
Madera	NA	NA	NA	NA	NA	NA	NA	NA	NA	NA	10.86
Fresno	NA	NA	NA	NA	NA	NA	NA	NA	NA	NA	11.05
Lemoore	NA	NA	NA	NA	NA	NA	NA	NA	NA	NA	7.23
Visalia	NA	NA	NA	NA	NA	NA	NA	NA	NA	NA	10.37
Bakersfield	NA	NA	NA	NA	NA	NA	NA	NA	NA	NA	6.40
<b>Cascade Sierra</b>											
Alturas	NA	NA	NA	NA	NA	NA	NA	NA	NA	NA	11.72
Mount Shasta	NA	NA	NA	NA	NA	NA	NA	NA	NA	NA	37.86
Blue Canyon	NA	NA	NA	NA	NA	NA	NA	NA	NA	NA	62.80
Yosemite Valley	NA	NA	NA	NA	NA	NA	NA	NA	NA	NA	40.65
<b>South Coast</b>											
Santa Maria	NA	NA	NA	NA	NA	NA	NA	NA	NA	NA	13.42
Santa Barbara	NA	NA	NA	NA	NA	NA	NA	NA	NA	NA	17.38
Oxnard	NA	NA	NA	NA	NA	NA	NA	NA	NA	NA	13.05
Riverside	NA	NA	NA	NA	NA	NA	NA	NA	NA	NA	9.48
Los Angeles	NA	NA	NA	NA	NA	NA	NA	NA	NA	NA	12.33
San Diego	NA	NA	NA	NA	NA	NA	NA	NA	NA	NA	9.87
<b>Southeast Interior</b>											
Bishop	NA	NA	NA	NA	NA	NA	NA	NA	NA	NA	4.87
Daggett	NA	NA	NA	NA	NA	NA	NA	NA	NA	NA	3.80
Lancaster	NA	NA	NA	NA	NA	NA	NA	NA	NA	NA	6.86
Thermal	NA	NA	NA	NA	NA	NA	NA	NA	NA	NA	2.98
Blythe	NA	NA	NA	NA	NA	NA	NA	NA	NA	NA	3.58
Imperial	NA	NA	NA	NA	NA	NA	NA	NA	NA	NA	2.39

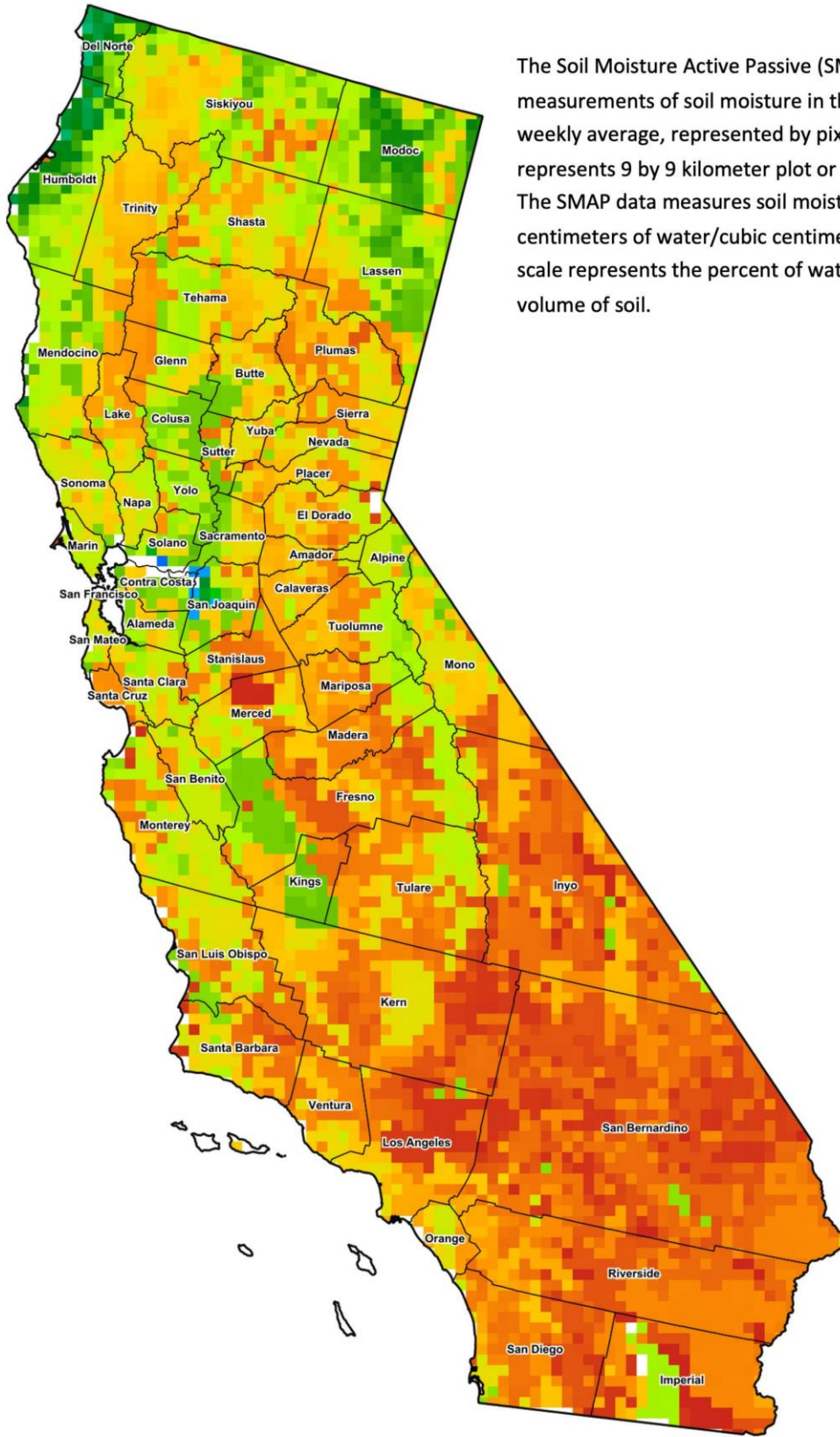
<sup>1</sup> Total number of days with precipitation events this season.  
<sup>2</sup> Rain or melted snow/ice.  
<sup>3</sup> Normal periods 1990-2020 used in departure from normal calculations.  
 (NA) Not available at time of publication.

Data retrieved from NOAA and NWS. Calculated by USDA NASS.  
 All rights reserved.

**Reservoir Data from the California Department of Water Resources**

Reservoir	Capacity	Nov 8, 2024			This Date Last Year	
		Storage	Percent of Capacity	Percent of Average	Storage	Percent of Capacity
		<i>Acre Feet</i>	<i>Percent</i>	<i>Percent</i>	<i>Acre Feet</i>	<i>Percent</i>
Shasta Lake	4,547,300	2,577,448	57	106	3,135,498	69
Lake Oroville	3,537,400	1,703,931	48	95	2,414,126	68
Trinity Lake	2,443,800	1,613,039	66	114	1,218,568	50
New Melones Reservoir	2,413,000	1,795,979	75	140	1,893,669	79
San Luis Reservoir	2,057,200	1,055,815	52	114	1,313,144	64
Don Pedro Reservoir	2,030,000	1,412,385	70	106	1,640,178	81

Source: [cdec.water.ca.gov/reportapp/javareports?name=DLYHYDRO](https://cdec.water.ca.gov/reportapp/javareports?name=DLYHYDRO)



The Soil Moisture Active Passive (SMAP) provides measurements of soil moisture in the root zone as a weekly average, represented by pixels. Each pixel represents 9 by 9 kilometer plot or about 20,000 acres. The SMAP data measures soil moisture in cubic centimeters of water/cubic centimeters of soil. The scale represents the percent of water in a given volume of soil.

**Percent Soil Moisture**

- 0%
- 5%
- 10%
- 15%
- 20%
- 25%
- 30%
- 35%
- 40%
- 45%
- 50%
- 55%
- 60%
- >65%

**Drought Conditions from the U.S. Drought Monitor as of 11/5/2024**

Time	Percent of Land in Drought Rating						Drought Severity (DSCI)
	None	D0	D1	D2	D3	D4	
Current	25.53	62.21	7.95	4.30	0.00	0.00	91
Last Week	25.37	62.37	7.96	4.30	0.00	0.00	91
3 Months Ago	77.26	17.43	5.32	0.00	0.00	0.00	28
One Year Ago	94.04	5.96	0.00	0.00	0.00	0.00	6

The U.S. Drought Monitor is jointly produced by the National Drought Mitigation Center at the University of Nebraska-Lincoln, the United States Department of Agriculture, and the National Oceanic and Atmospheric Administration. [droughtmonitor.unl.edu/CurrentMap/StateDroughtMonitor.aspx?CA](https://droughtmonitor.unl.edu/CurrentMap/StateDroughtMonitor.aspx?CA)