



California Crop Progress & Condition

Cooperating with the California Department of Food and Agriculture
Pacific Region • 650 Capitol Mall, Suite 6-100 • Sacramento, CA 95814 • (916) 738-6600 • (855) 270-2722 FAX •
www.nass.usda.gov/ca

WEEK ENDING: October 27, 2024
RELEASED: October 28, 2024

FREQUENCY: Weekly
VOL. 44 NO. 83

WEATHER

Temperature and precipitation information for California are not available this week.

FIELD CROPS

In the Sacramento Valley, **rice** harvest neared completion. Winter **wheat** planting continued. In the San Joaquin Valley, **cotton** harvest and ginning progressed. **Corn, sudangrass, and alfalfa** fields were chopped. Some alfalfa was baled for hay. **Dry bean** harvest continued. In Tulare County, corn fields were in the final stages of production, with most fields harvested. Cotton fields were defoliated in preparation for harvest, and harvest has begun in some areas. **Black-eyed beans** were cut into windrows for drying. Some alfalfa fields were cut for hay and others were green chopped for local dairies. Fields were prepped for winter planting.

FRUIT CROPS

The stone fruit harvest was complete with the exception of **plums**. **Persimmon** harvest continued. Pineapple **quince** were picked. **Pomegranate** and **fig** harvests continued. Most **pear** harvest was winding down except for Asian pears, which were in full swing. Late variety **table grape** harvest continued, while some that were left on the vine were picked for juice. Raisin grapes were rolled and dried. **Kiwi** neared full size and were harvested in some areas. District 2 **lemon** harvest neared completion, and District 3 lemon harvest was ramping up. The Desert Rio **grapefruit** and **pomelo** harvest began in Riverside County and the San Joaquin Valley. Navel **oranges** were gaining good color. Harvest continued in some areas on a limited basis, as growers in other areas prepared for harvest. Growers sprayed copper, lime, and zinc prior to the rainy season. **Olive** harvest continued. **Raspberry, blackberry, and strawberry** harvests continued along the Central Coast.

NUT CROPS

Almond harvest neared completion and orchards were prepped for winter. **Pistachio, walnut,** and **pecan** harvests continued. Almonds, walnuts, and pistachios were sprayed with herbicides and insecticides.

VEGETABLE CROPS

Across California, **pumpkins** were harvested. In the Sacramento Valley, organic **tomatoes** and winter **squash** were harvested. In the San Joaquin Valley, **broccoli, tomato, cantaloupe, honeydew, watermelon,** and squash harvests continued. In the Central Valley, **melons, sweet corn, eggplant, peppers, sweet potatoes,** squash, tomatoes, **garlic,** and **carrots** were harvested and sold at local stands. Harvested fields were tarping to treat for nematodes before next spring planting. Along the Central Coast, green **bell pepper** harvest was winding down. Broccoli, brussel sprouts, **cauliflower, celery, kale,** garlic, squash, and **lettuce** continued to be harvested. Quality issues were reported in brussel sprouts. In the Imperial Valley, bell peppers, cantaloupe, and **chili peppers** were harvested.

LIVESTOCK

Rangeland and non-irrigated pasture remained in poor to fair condition. Irrigated pasture was reported to be in good condition. Some cattle were grazing on higher elevation range. Supplemental feeding was ongoing. Fall calving continued. Sheep grazed retired cropland and harvested vegetable fields. Some bees were moved into the state to overwinter before the almond bloom.

CALIFORNIA CROP WEATHER – WEEK ENDING OCTOBER 27, 2024

STATIONS	TEMPERATURE				GROWING DEGREE DAYS AT 50 °F BASE		RAIN DAYS ¹	PRECIPITATION ²			
	Average for Week Ending Oct 27, 2024	Departure from Normal ³	High	Low	This Year	Normal Year ³	This Season	This Week	This Season	Normal Season ³	Normal Year ³
					Jan 1 - Oct 27, 2024	Jan 1 - Oct 27, 2024	Oct 1 - Oct 27, 2024	Week Ending Oct 27, 2024	Oct 1 - Oct 27, 2024	Oct 1 - Oct 27, 2024	Oct 1 - Sept 30
-- Degrees Fahrenheit --				-- Number --		-- Days --	-- Inches of Precipitation --				
North Coast	NA	NA	NA	NA	NA	NA	NA	NA	NA	NA	40.61
Eureka WFO	NA	NA	NA	NA	NA	NA	NA	NA	NA	NA	35.07
Ukiah	NA	NA	NA	NA	NA	NA	NA	NA	NA	NA	34.00
Santa Rosa	NA	NA	NA	NA	NA	NA	NA	NA	NA	NA	20.36
Napa State Hospital	NA	NA	NA	NA	NA	NA	NA	NA	NA	NA	
Central Coast	NA	NA	NA	NA	NA	NA	NA	NA	NA	NA	
San Francisco	NA	NA	NA	NA	NA	NA	NA	NA	NA	NA	19.77
San Jose	NA	NA	NA	NA	NA	NA	NA	NA	NA	NA	13.58
Salinas	NA	NA	NA	NA	NA	NA	NA	NA	NA	NA	12.66
Monterey	NA	NA	NA	NA	NA	NA	NA	NA	NA	NA	16.36
Paso Robles	NA	NA	NA	NA	NA	NA	NA	NA	NA	NA	12.24
Sacramento Valley	NA	NA	NA	NA	NA	NA	NA	NA	NA	NA	
Redding	NA	NA	NA	NA	NA	NA	NA	NA	NA	NA	33.70
Red Bluff	NA	NA	NA	NA	NA	NA	NA	NA	NA	NA	23.25
Orland	NA	NA	NA	NA	NA	NA	NA	NA	NA	NA	21.52
Oroville	NA	NA	NA	NA	NA	NA	NA	NA	NA	NA	25.84
Marysville	NA	NA	NA	NA	NA	NA	NA	NA	NA	NA	20.21
Sacramento	NA	NA	NA	NA	NA	NA	NA	NA	NA	NA	18.10
San Joaquin Valley	NA	NA	NA	NA	NA	NA	NA	NA	NA	NA	
Stockton	NA	NA	NA	NA	NA	NA	NA	NA	NA	NA	13.53
Modesto	NA	NA	NA	NA	NA	NA	NA	NA	NA	NA	12.34
Merced	NA	NA	NA	NA	NA	NA	NA	NA	NA	NA	11.87
Madera	NA	NA	NA	NA	NA	NA	NA	NA	NA	NA	10.86
Fresno	NA	NA	NA	NA	NA	NA	NA	NA	NA	NA	11.05
Lemoore	NA	NA	NA	NA	NA	NA	NA	NA	NA	NA	7.23
Visalia	NA	NA	NA	NA	NA	NA	NA	NA	NA	NA	10.37
Bakersfield	NA	NA	NA	NA	NA	NA	NA	NA	NA	NA	6.40
Cascade Sierra	NA	NA	NA	NA	NA	NA	NA	NA	NA	NA	
Alturas	NA	NA	NA	NA	NA	NA	NA	NA	NA	NA	11.72
Mount Shasta	NA	NA	NA	NA	NA	NA	NA	NA	NA	NA	37.86
Blue Canyon	NA	NA	NA	NA	NA	NA	NA	NA	NA	NA	62.80
Yosemite Valley	NA	NA	NA	NA	NA	NA	NA	NA	NA	NA	40.65
South Coast	NA	NA	NA	NA	NA	NA	NA	NA	NA	NA	
Santa Maria	NA	NA	NA	NA	NA	NA	NA	NA	NA	NA	13.42
Santa Barbara	NA	NA	NA	NA	NA	NA	NA	NA	NA	NA	17.38
Oxnard	NA	NA	NA	NA	NA	NA	NA	NA	NA	NA	13.05
Riverside	NA	NA	NA	NA	NA	NA	NA	NA	NA	NA	9.48
Los Angeles	NA	NA	NA	NA	NA	NA	NA	NA	NA	NA	12.33
San Diego	NA	NA	NA	NA	NA	NA	NA	NA	NA	NA	9.87
Southeast Interior	NA	NA	NA	NA	NA	NA	NA	NA	NA	NA	
Bishop	NA	NA	NA	NA	NA	NA	NA	NA	NA	NA	4.87
Daggett	NA	NA	NA	NA	NA	NA	NA	NA	NA	NA	3.80
Lancaster	NA	NA	NA	NA	NA	NA	NA	NA	NA	NA	6.86
Thermal	NA	NA	NA	NA	NA	NA	NA	NA	NA	NA	2.98
Blythe	NA	NA	NA	NA	NA	NA	NA	NA	NA	NA	3.58
Imperial	NA	NA	NA	NA	NA	NA	NA	NA	NA	NA	2.39

¹ Total number of days with precipitation events this season.
² Rain or melted snow/ice.
³ Normal periods 1990-2020 used in departure from normal calculations.
 (NA) Not available at time of publication.

Data retrieved from NOAA and NWS. Calculated by USDA NASS.
 All rights reserved.

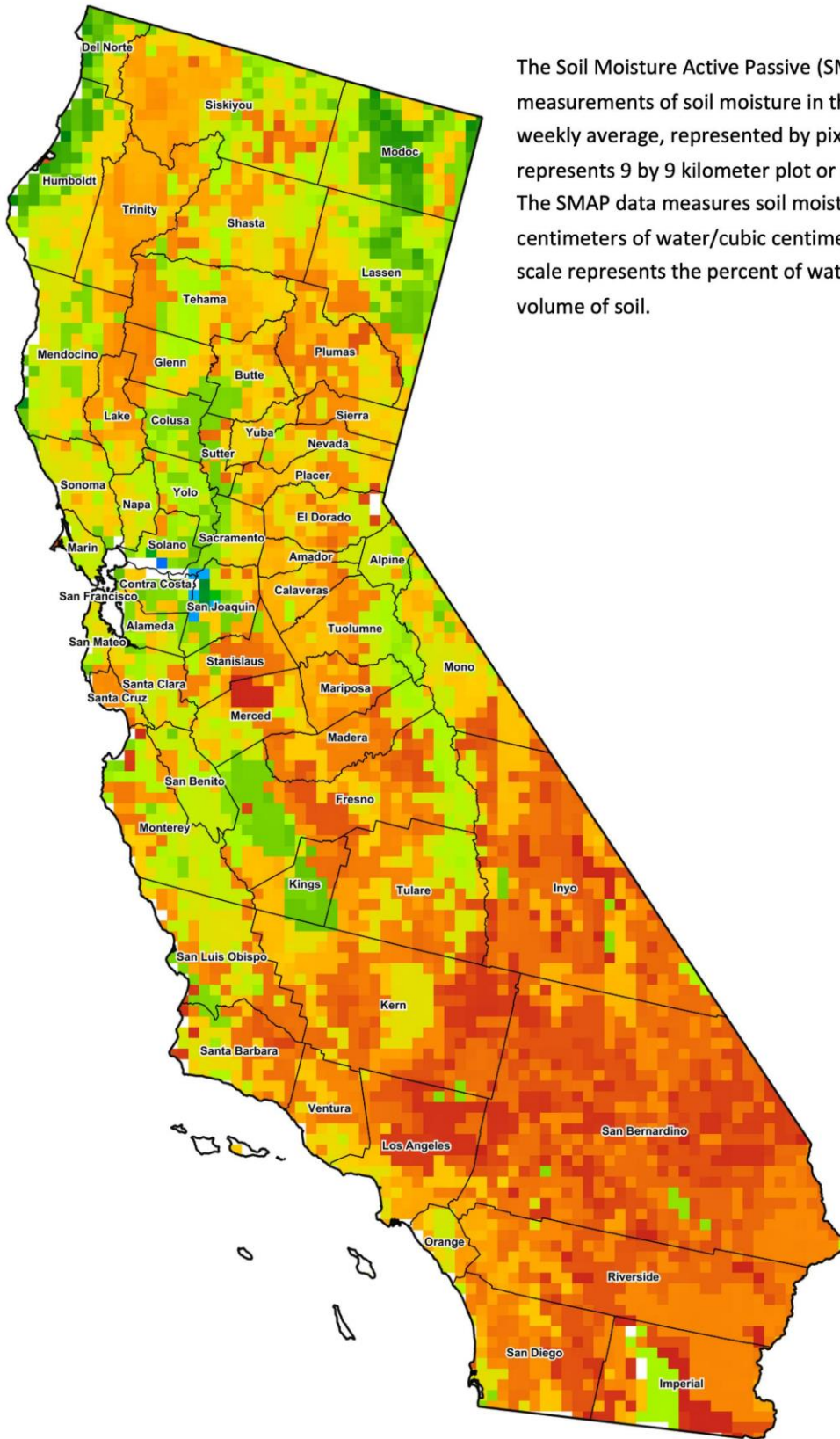
Reservoir Data from the California Department of Water Resources

Reservoir	Capacity	Oct 27, 2024			This Date Last Year	
		Storage	Percent of Capacity	Percent of Average	Storage	Percent of Capacity
	<i>Acre Feet</i>	<i>Acre Feet</i>	<i>Percent</i>	<i>Percent</i>	<i>Acre Feet</i>	<i>Percent</i>
Shasta Lake	4,547,300	2,616,211	57	107	3,173,951	70
Lake Oroville	3,537,400	1,728,751	49	95	2,446,712	69
Trinity Lake	2,443,800	1,631,514	67	114	1,228,359	50
New Melones Reservoir	2,413,000	1,798,471	75	139	1,891,313	79
San Luis Reservoir	2,057,200	1,063,364	52	117	1,382,066	68
Don Pedro Reservoir	2,030,000	NA	NA	NA	1,650,103	81

Source: cdec.water.ca.gov/reportapp/javareports?name=DLYHYDRO
 (NA) Not available at time of publication.



California Soil Moisture Map for the Week of October 14 - 20, 2024



The Soil Moisture Active Passive (SMAP) provides measurements of soil moisture in the root zone as a weekly average, represented by pixels. Each pixel represents 9 by 9 kilometer plot or about 20,000 acres. The SMAP data measures soil moisture in cubic centimeters of water/cubic centimeters of soil. The scale represents the percent of water in a given volume of soil.



Drought Conditions from the U.S. Drought Monitor as of 10/22/2024

Time	Percent of Land in Drought Rating						Drought Severity (DSCI)
	None	D0	D1	D2	D3	D4	
Current	24.68	61.28	9.74	4.30	0.00	0.00	94
Last Week	24.68	61.28	9.74	4.30	0.00	0.00	94
3 Months Ago	78.80	16.76	4.44	0.00	0.00	0.00	26
One Year Ago	94.32	5.68	0.00	0.00	0.00	0.00	6

The U.S. Drought Monitor is jointly produced by the National Drought Mitigation Center at the University of Nebraska-Lincoln, the United States Department of Agriculture, and the National Oceanic and Atmospheric Administration. droughtmonitor.unl.edu/CurrentMap/StateDroughtMonitor.aspx?CA