



# California Crop Progress & Condition

Cooperating with the California Department of Food and Agriculture  
Pacific Region • 650 Capitol Mall, Suite 6-100 • Sacramento, CA 95814 • (916) 738-6600 • (855) 270-2722 FAX •  
[www.nass.usda.gov/ca](http://www.nass.usda.gov/ca)

**WEEK ENDING: October 6, 2024**  
**RELEASED: October 7, 2024**

**FREQUENCY: Weekly**  
**VOL. 44 NO. 80**

## WEATHER

Temperature and precipitation information for California are not available this week.

## FIELD CROPS

In the Sacramento Valley, **rice**, **corn**, and **milo** harvest slowed down. In the San Joaquin Valley, **cotton** fields matured and defoliation activities continued. Harvest began on a very limited scale. **Alfalfa** and corn fields were greenchopped. **Oat** fields were growing well. In Tulare County, corn harvest neared completion. Cotton bolls continued to crack open and defoliation began. Black-eyed **beans** were cut into windrows for drying. Some alfalfa fields were cut for hay and others were green chopped for local dairies.

## FRUIT CROPS

**Peach** and **nectarine** harvests continued to wind down. **Plum** and **pluot** late variety harvests continued. **Persimmons** began to color. Pineapple **quince** were picked. **Pomegranate**, **fig**, and **prune** harvests continued. **Pear** harvest was winding down. Wine **grape** harvest continued. Late variety table grape harvest continued, while some that were left on the vine were picked for juice. **Raisins** were rolled and dried. **Kiwi** were reaching full size. Harvested citrus orchards were pruned, topped, and fertilized. **Lemon** harvest continued. Navel **oranges** were gaining good color. Growers prepared to spray copper, lime, and zinc prior to the rainy season. Valencia orange harvest neared completion as the season was expected to finish well ahead of last year. **Olive** harvest continued. **Raspberry**, **blackberry**, and **strawberry** harvests continued along the Central Coast.

## NUT CROPS

**Almond** harvest neared completion with orchard floors cleaned and trees shaken. **Pistachio**, **walnut**, and **pecan** harvests continued. Almonds, walnuts, and pistachios were sprayed with herbicides and insecticides.

## VEGETABLE CROPS

Across California, processing **tomato** harvest was winding down. Organic tomatoes, **squash**, and **pumpkins** were harvested in the Sacramento Valley. In the San Joaquin Valley, melons, pumpkins, squash, **sweet potatoes**, and **broccoli** were harvested. In Tulare County, **cucumbers**, **watermelon**, **cantaloupe**, **peppers**, **honeydew**, **sweet corn**, **zucchini**, **tomatillos**, **okra**, **eggplant**, pumpkins, squash, tomatoes, **garlic**, **carrots**, **bell peppers** and **onions** were harvested and sold at local stands. Cabbage and other brassica crops were affected by the Diamondback Moth. Along the Central Coast, broccoli, **brussel sprouts**, **cauliflower**, **celery**, **kale**, garlic, squash, and **lettuce** continued to be harvested. Broccoli and brussel sprouts had some insect damage. In the Imperial Valley, eggplant, onions, melons, **chili peppers**, **green beans**, and sweet corn were harvested.

## LIVESTOCK

Rangeland and non-irrigated pasture were reported to be in poor to fair condition. Irrigated pasture remained in good condition. Some cattle were grazing on higher elevation range and supplemental feeding continued in the San Joaquin and Sacramento Valleys. Fall calving was underway. Sheep grazed harvested melon and vegetable fields.

**CALIFORNIA CROP WEATHER – WEEK ENDING OCTOBER 6, 2024**

STATIONS	TEMPERATURE				GROWING DEGREE DAYS AT 50 °F BASE		RAIN DAYS <sup>1</sup>	PRECIPITATION <sup>2</sup>			
	Average for Week Ending Oct 6, 2024	Departure from Normal <sup>3</sup>	High	Low	This Year	Normal Year <sup>3</sup>	This Season	This Week	This Season	Normal Season <sup>3</sup>	Normal Year <sup>3</sup>
					Jan 1 - Oct 6, 2024	Jan 1 - Oct 6, 2024	Oct 1 - Oct 6, 2024	Week Ending Oct 6, 2024	Oct 1 - Oct 6, 2024	Oct 1 - Oct 6, 2024	Oct 1 - Sept 30
-- Degrees Fahrenheit --				-- Number --		-- Days --	-- Inches of Precipitation --				
<b>North Coast</b>	NA	NA	NA	NA	NA	NA	NA	NA	NA	NA	40.61
Eureka WFO	NA	NA	NA	NA	NA	NA	NA	NA	NA	NA	35.07
Ukiah	NA	NA	NA	NA	NA	NA	NA	NA	NA	NA	34.00
Santa Rosa	NA	NA	NA	NA	NA	NA	NA	NA	NA	NA	20.36
Napa State Hospital	NA	NA	NA	NA	NA	NA	NA	NA	NA	NA	
<b>Central Coast</b>	NA	NA	NA	NA	NA	NA	NA	NA	NA	NA	
San Francisco	NA	NA	NA	NA	NA	NA	NA	NA	NA	NA	19.77
San Jose	NA	NA	NA	NA	NA	NA	NA	NA	NA	NA	13.58
Salinas	NA	NA	NA	NA	NA	NA	NA	NA	NA	NA	12.66
Monterey	NA	NA	NA	NA	NA	NA	NA	NA	NA	NA	16.36
Paso Robles	NA	NA	NA	NA	NA	NA	NA	NA	NA	NA	12.24
<b>Sacramento Valley</b>	NA	NA	NA	NA	NA	NA	NA	NA	NA	NA	
Redding	NA	NA	NA	NA	NA	NA	NA	NA	NA	NA	33.70
Red Bluff	NA	NA	NA	NA	NA	NA	NA	NA	NA	NA	23.25
Orland	NA	NA	NA	NA	NA	NA	NA	NA	NA	NA	21.52
Oroville	NA	NA	NA	NA	NA	NA	NA	NA	NA	NA	25.84
Marysville	NA	NA	NA	NA	NA	NA	NA	NA	NA	NA	20.21
Sacramento	NA	NA	NA	NA	NA	NA	NA	NA	NA	NA	18.10
<b>San Joaquin Valley</b>	NA	NA	NA	NA	NA	NA	NA	NA	NA	NA	
Stockton	NA	NA	NA	NA	NA	NA	NA	NA	NA	NA	13.53
Modesto	NA	NA	NA	NA	NA	NA	NA	NA	NA	NA	12.34
Merced	NA	NA	NA	NA	NA	NA	NA	NA	NA	NA	11.87
Madera	NA	NA	NA	NA	NA	NA	NA	NA	NA	NA	10.86
Fresno	NA	NA	NA	NA	NA	NA	NA	NA	NA	NA	11.05
Lemoore	NA	NA	NA	NA	NA	NA	NA	NA	NA	NA	7.23
Visalia	NA	NA	NA	NA	NA	NA	NA	NA	NA	NA	10.37
Bakersfield	NA	NA	NA	NA	NA	NA	NA	NA	NA	NA	6.40
<b>Cascade Sierra</b>	NA	NA	NA	NA	NA	NA	NA	NA	NA	NA	
Alturas	NA	NA	NA	NA	NA	NA	NA	NA	NA	NA	11.72
Mount Shasta	NA	NA	NA	NA	NA	NA	NA	NA	NA	NA	37.86
Blue Canyon	NA	NA	NA	NA	NA	NA	NA	NA	NA	NA	62.80
Yosemite Valley	NA	NA	NA	NA	NA	NA	NA	NA	NA	NA	40.65
<b>South Coast</b>	NA	NA	NA	NA	NA	NA	NA	NA	NA	NA	
Santa Maria	NA	NA	NA	NA	NA	NA	NA	NA	NA	NA	13.42
Santa Barbara	NA	NA	NA	NA	NA	NA	NA	NA	NA	NA	17.38
Oxnard	NA	NA	NA	NA	NA	NA	NA	NA	NA	NA	13.05
Riverside	NA	NA	NA	NA	NA	NA	NA	NA	NA	NA	9.48
Los Angeles	NA	NA	NA	NA	NA	NA	NA	NA	NA	NA	12.33
San Diego	NA	NA	NA	NA	NA	NA	NA	NA	NA	NA	9.87
<b>Southeast Interior</b>	NA	NA	NA	NA	NA	NA	NA	NA	NA	NA	
Bishop	NA	NA	NA	NA	NA	NA	NA	NA	NA	NA	4.87
Daggett	NA	NA	NA	NA	NA	NA	NA	NA	NA	NA	3.80
Lancaster	NA	NA	NA	NA	NA	NA	NA	NA	NA	NA	6.86
Thermal	NA	NA	NA	NA	NA	NA	NA	NA	NA	NA	2.98
Blythe	NA	NA	NA	NA	NA	NA	NA	NA	NA	NA	3.58
Imperial	NA	NA	NA	NA	NA	NA	NA	NA	NA	NA	2.39

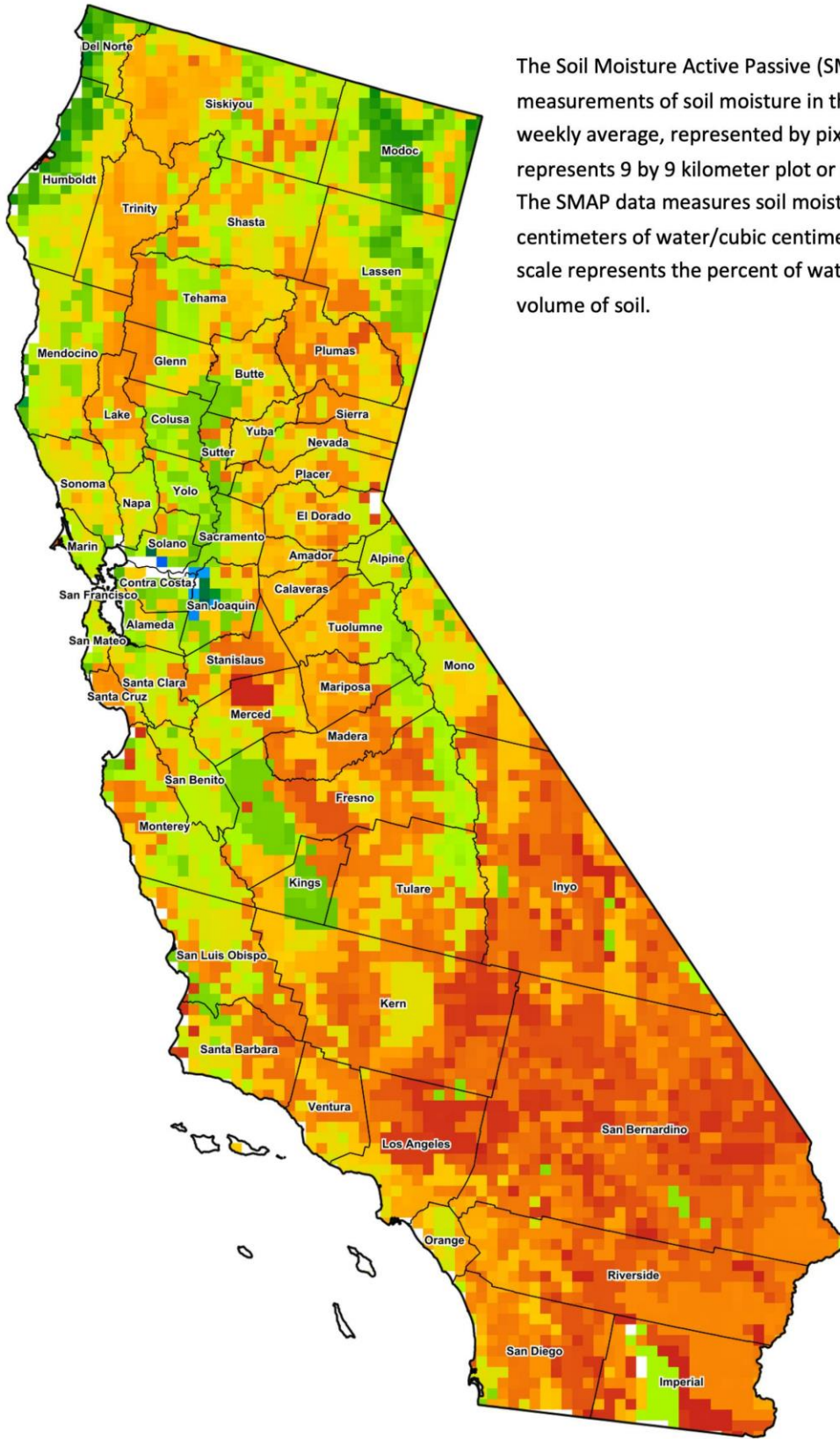
<sup>1</sup> Total number of days with precipitation events this season.  
<sup>2</sup> Rain or melted snow/ice.  
<sup>3</sup> Normal periods 1990-2020 used in departure from normal calculations.  
 (NA) Not available at time of publication.

Data retrieved from NOAA and NWS. Calculated by USDA NASS.  
 All rights reserved.

**Reservoir Data from the California Department of Water Resources**

Reservoir	Capacity	Oct 6, 2024			This Date Last Year	
		Storage	Percent of Capacity	Percent of Average	Storage	Percent of Capacity
		<i>Acre Feet</i>	<i>Acre Feet</i>	<i>Percent</i>	<i>Percent</i>	<i>Acre Feet</i>
Shasta Lake	4,547,300	2,731,983	60	109	3,296,327	72
Lake Oroville	3,537,400	1,839,340	52	97	2,558,893	72
Trinity Lake	2,443,800	1,699,642	69	115	1,264,440	52
New Melones Reservoir	2,413,000	1,820,555	76	137	1,896,238	79
San Luis Reservoir	2,057,200	1,042,697	51	119	1,646,764	81
Don Pedro Reservoir	2,030,000	1,501,838	74	109	1,702,707	84

Source: [cdec.water.ca.gov/reportapp/javareports?name=DLYHYDRO](https://cdec.water.ca.gov/reportapp/javareports?name=DLYHYDRO)



The Soil Moisture Active Passive (SMAP) provides measurements of soil moisture in the root zone as a weekly average, represented by pixels. Each pixel represents 9 by 9 kilometer plot or about 20,000 acres. The SMAP data measures soil moisture in cubic centimeters of water/cubic centimeters of soil. The scale represents the percent of water in a given volume of soil.



**Drought Conditions from the U.S. Drought Monitor as of 10/1/2024**

Time	Percent of Land in Drought Rating						Drought Severity (DSCI)
	None	D0	D1	D2	D3	D4	
Current	28.40	60.94	10.59	0.08	0.00	0.00	82
Last Week	28.59	60.75	10.59	0.08	0.00	0.00	82
3 Months Ago	94.25	5.75	0.00	0.00	0.00	0.00	6
One Year Ago	94.01	5.93	0.07	0.00	0.00	0.00	6

The U.S. Drought Monitor is jointly produced by the National Drought Mitigation Center at the University of Nebraska-Lincoln, the United States Department of Agriculture, and the National Oceanic and Atmospheric Administration. [droughtmonitor.unl.edu/CurrentMap/StateDroughtMonitor.aspx?CA](http://droughtmonitor.unl.edu/CurrentMap/StateDroughtMonitor.aspx?CA)