



California Crop Progress & Condition

Cooperating with the California Department of Food and Agriculture
Pacific Region • 650 Capitol Mall, Suite 6-100 • Sacramento, CA 95814 • (916) 738-6600 • (855) 270-2722 FAX •
www.nass.usda.gov/ca

WEEK ENDING: September 15, 2024
RELEASED: September 16, 2024

FREQUENCY: Weekly
VOL. 44 NO. 77

WEATHER

Temperature ranges for California are not available this week.

FIELD CROPS

In Sutter County, **sunflowers**, seed crops, and **rice** were harvested. In the Sacramento Valley, short grain and sweet rice harvests began. **Corn** and **safflower** harvests continued. In the San Joaquin Valley, **cotton** bolls cracked open and growers prepared for harvest. Corn and **alfalfa** were chopped. **Wheat** fields continued to mature. In Tulare County, corn fields were harvested. Cotton bolls continued to develop and crack open. Seed crops were harvested and delivered to local seed dealers. Irrigation was stopped in early planted black-eyed **bean** fields in preparation for harvest.

FRUIT CROPS

Late varieties of **peach**, **plum**, **pluot**, and **nectarine** harvests continued. **Figs** and **prunes** were harvested. **Persimmons** were maturing and growers sprayed their orchards with fungicides. Early variety **pomegranate** harvest continued in some areas. **Pear**, **apple**, and table and wine **grape** harvests continued. Some late table grape varieties were covered with plastic sheeting to protect the grapes from rain. **Kiwi** were harvested. **Grapefruit** and **avocado** harvests have concluded. **Lemon** and **lime** harvests continued. Valencia **orange** harvest neared completion as the season was expected to finish well ahead of last year. Harvested citrus orchards were pruned, topped, and fertilized. New season citrus fruit continued to develop and increase in size. Fruit thinning continued in **mandarin** groves. Table **olive** harvest gained momentum. **Raspberry**, **blackberry**, and **strawberry** harvests continued along the Central Coast.

NUT CROPS

Almond harvest continued with orchard floors cleaned and trees shaken. **Pistachio** and **pecan** orchards were harvested. Early variety **walnut** harvest began.

VEGETABLE CROPS

Across California, processing **tomatoes** continued to be harvested and sent to canneries. In the Sacramento Valley, cherry and heirloom tomato, hard **squash** and **pumpkin** harvests continued. **Watermelon** harvest was winding down. In the San Joaquin Valley, melons, pumpkins, and squash were harvested. In the Central Valley, **cucumbers**, watermelon, **cantaloupe**, **honeydew**, **sweet corn**, **zucchini**, **tomatillos**, **okra**, **eggplant**, squash, **garlic**, **carrots**, and **onions** were harvested and sold at local stands. Along the Central Coast, **bell peppers**, **broccoli**, **brussel sprouts**, **cauliflower**, **celery**, **kale**, garlic, squash, and **lettuce** continued to be harvested. In the Imperial Valley, eggplant, onions, melons, **chili peppers**, **green beans**, and sweet corn were harvested.

LIVESTOCK

Rangeland and non-irrigated pasture were in poor to fair condition. Irrigated pasture remained in good condition. Supplemental feeding of cattle continued. Some cattle grazed upper elevation range. With ongoing high temperatures, some dairies utilized heat mitigation measures including fans and sprinklers to reduce heat stress.

CALIFORNIA CROP WEATHER – WEEK ENDING SEPTEMBER 15, 2024

STATIONS	TEMPERATURE				GROWING DEGREE DAYS AT 50 °F BASE		RAIN DAYS ¹	PRECIPITATION ²			
	Average for Week Ending Sep 15, 2024	Departure from Normal ³	High	Low	This Year	Normal Year ³	This Season	This Week	This Season	Normal Season ³	Normal Year ³
					Jan 1 - Sep 15, 2024	Jan 1 - Sep 15, 2024	Oct 1 - Sep 15, 2024	Week Ending Sep 15, 2024	Oct 1 - Sep 15, 2024	Oct 1 - Sep 15, 2024	Oct 1 - Sept 30
	-- Degrees Fahrenheit --				-- Number --		-- Days --	-- Inches of Precipitation --			
North Coast											
Eureka WFO	NA	NA	NA	NA	NA	NA	NA	NA	NA	NA	40.61
Ukiah	NA	NA	NA	NA	NA	NA	NA	NA	NA	NA	35.07
Santa Rosa	NA	NA	NA	NA	NA	NA	NA	NA	NA	NA	34.00
Napa State Hospital	NA	NA	NA	NA	NA	NA	NA	NA	NA	NA	20.36
Central Coast											
San Francisco	NA	NA	NA	NA	NA	NA	NA	NA	NA	NA	19.77
San Jose	NA	NA	NA	NA	NA	NA	NA	NA	NA	NA	13.58
Salinas	NA	NA	NA	NA	NA	NA	NA	NA	NA	NA	12.66
Monterey	NA	NA	NA	NA	NA	NA	NA	NA	NA	NA	16.36
Paso Robles	NA	NA	NA	NA	NA	NA	NA	NA	NA	NA	12.24
Sacramento Valley											
Redding	NA	NA	NA	NA	NA	NA	NA	NA	NA	NA	33.70
Red Bluff	NA	NA	NA	NA	NA	NA	NA	NA	NA	NA	23.25
Orland	NA	NA	NA	NA	NA	NA	NA	NA	NA	NA	21.52
Oroville	NA	NA	NA	NA	NA	NA	NA	NA	NA	NA	25.84
Marysville	NA	NA	NA	NA	NA	NA	NA	NA	NA	NA	20.21
Sacramento	NA	NA	NA	NA	NA	NA	NA	NA	NA	NA	18.10
San Joaquin Valley											
Stockton	NA	NA	NA	NA	NA	NA	NA	NA	NA	NA	13.53
Modesto	NA	NA	NA	NA	NA	NA	NA	NA	NA	NA	12.34
Merced	NA	NA	NA	NA	NA	NA	NA	NA	NA	NA	11.87
Madera	NA	NA	NA	NA	NA	NA	NA	NA	NA	NA	10.86
Fresno	NA	NA	NA	NA	NA	NA	NA	NA	NA	NA	11.05
Lemoore	NA	NA	NA	NA	NA	NA	NA	NA	NA	NA	7.23
Visalia	NA	NA	NA	NA	NA	NA	NA	NA	NA	NA	10.37
Bakersfield	NA	NA	NA	NA	NA	NA	NA	NA	NA	NA	6.40
Cascade Sierra											
Alturas	NA	NA	NA	NA	NA	NA	NA	NA	NA	NA	11.72
Mount Shasta	NA	NA	NA	NA	NA	NA	NA	NA	NA	NA	37.86
Blue Canyon	NA	NA	NA	NA	NA	NA	NA	NA	NA	NA	62.80
Yosemite Valley	NA	NA	NA	NA	NA	NA	NA	NA	NA	NA	40.65
South Coast											
Santa Maria	NA	NA	NA	NA	NA	NA	NA	NA	NA	NA	13.42
Santa Barbara	NA	NA	NA	NA	NA	NA	NA	NA	NA	NA	17.38
Oxnard	NA	NA	NA	NA	NA	NA	NA	NA	NA	NA	13.05
Riverside	NA	NA	NA	NA	NA	NA	NA	NA	NA	NA	9.48
Los Angeles	NA	NA	NA	NA	NA	NA	NA	NA	NA	NA	12.33
San Diego	NA	NA	NA	NA	NA	NA	NA	NA	NA	NA	9.87
Southeast Interior											
Bishop	NA	NA	NA	NA	NA	NA	NA	NA	NA	NA	4.87
Daggett	NA	NA	NA	NA	NA	NA	NA	NA	NA	NA	3.80
Lancaster	NA	NA	NA	NA	NA	NA	NA	NA	NA	NA	6.86
Thermal	NA	NA	NA	NA	NA	NA	NA	NA	NA	NA	2.98
Blythe	NA	NA	NA	NA	NA	NA	NA	NA	NA	NA	3.58
Imperial	NA	NA	NA	NA	NA	NA	NA	NA	NA	NA	2.39

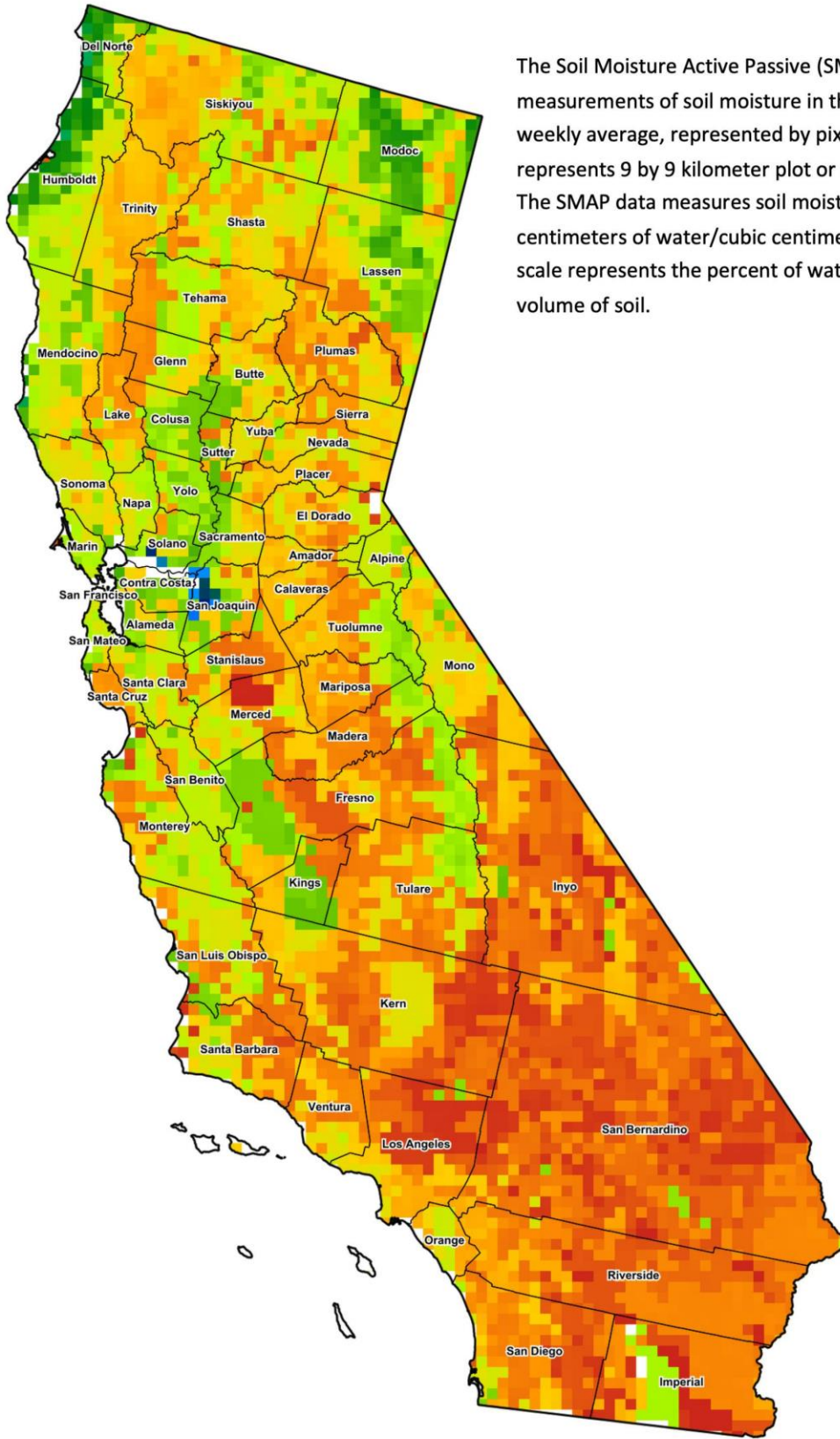
¹ Total number of days with precipitation events this season.
² Rain or melted snow/ice.
³ Normal periods 1990-2020 used in departure from normal calculations.
 (NA) Not available at time of publication.

Data retrieved from NOAA and NWS. Calculated by USDA NASS.
 All rights reserved.

Reservoir Data from the California Department of Water Resources

Reservoir	Capacity	Sep 15, 2024			This Date Last Year	
		Storage	Percent of Capacity	Percent of Average	Storage	Percent of Capacity
	<i>Acre Feet</i>	<i>Acre Feet</i>	<i>Percent</i>	<i>Percent</i>	<i>Acre Feet</i>	<i>Percent</i>
Shasta Lake	4,547,300	2,875,328	63	109	3,416,811	75
Lake Oroville	3,537,400	2,093,299	59	105	2,741,054	77
Trinity Lake	2,443,800	1,769,977	72	114	1,314,669	54
New Melones Reservoir	2,413,000	1,839,223	77	136	1,902,460	79
San Luis Reservoir	2,057,200	1,003,769	49	122	1,677,961	82
Don Pedro Reservoir	2,030,000	NA	NA	NA	1,761,177	87

Source: cdec.water.ca.gov/reportapp/javareports?name=DLYHYDRO



The Soil Moisture Active Passive (SMAP) provides measurements of soil moisture in the root zone as a weekly average, represented by pixels. Each pixel represents 9 by 9 kilometer plot or about 20,000 acres. The SMAP data measures soil moisture in cubic centimeters of water/cubic centimeters of soil. The scale represents the percent of water in a given volume of soil.



Drought Conditions from the U.S. Drought Monitor as of 9/10/2024

Time	Percent of Land in Drought Rating						Drought Severity (DSCI)
	None	D0	D1	D2	D3	D4	
Current	28.59	60.73	10.61	0.08	0.00	0.00	82
Last Week	45.59	46.05	8.36	0.00	0.00	0.00	63
3 Months Ago	98.79	1.21	0.00	0.00	0.00	0.00	1
One Year Ago	93.54	6.24	0.22	0.00	0.00	0.00	7

The U.S. Drought Monitor is jointly produced by the National Drought Mitigation Center at the University of Nebraska-Lincoln, the United States Department of Agriculture, and the National Oceanic and Atmospheric Administration. droughtmonitor.unl.edu/CurrentMap/StateDroughtMonitor.aspx?CA