



# California Crop Progress & Condition

Cooperating with the California Department of Food and Agriculture  
Pacific Region • 650 Capitol Mall, Suite 6-100 • Sacramento, CA 95814 • (916) 738-6600 • (855) 270-2722 FAX •  
[www.nass.usda.gov/ca](http://www.nass.usda.gov/ca)

**WEEK ENDING: September 8, 2024**  
**RELEASED: September 9, 2024**

**FREQUENCY: Weekly**  
**VOL. 44 NO. 76**

## WEATHER

Temperature ranges for California are not available this week.

## FIELD CROPS

In the Sacramento Valley, **rice** fields were drying down, and harvest began in a few fields. Seed crops were harvested, and **dry beans** were windrowed. Fall groundwork continued. In the San Joaquin Valley, **cotton** bolls continued to mature and crack open. **Corn** and **alfalfa** fields were greenchopped. In Tulare County, corn fields were greenchopped and delivered to local dairies. Cotton bolls and dry bean pods continued to develop. Seed crops were harvested and delivered to local seed dealers.

## FRUIT CROPS

Stone fruit and citrus orchards were fertilized and sprayed with fungicides, herbicides, and insecticides; pruning and shredding continued. Irrigation continued in stone fruit orchards. **Peach, plum, pluot, and nectarine** late variety harvests continued. **Prunes** were harvested and sent to the dehydrators. **Fig** harvest continued. **Persimmons** were maturing and growers placed scaffolding supports in orchards. Early variety **pomegranate** harvest continued in some areas. Bartlett and Red **pear** harvests slowed, while Bosc pear harvest continued. Table and wine **grape** harvests continued. **Kiwi** were harvested. **Grapefruit, lime, and lemon** harvests continued. Valencia **orange** harvest neared completion as the season was expected to finish well ahead of last year. Citrus groves were sprayed with whitewash to prevent sunburn. Harvested citrus orchards were pruned, topped, and fertilized. New season citrus fruit continued to develop and increase in size. Fruit thinning continued in **mandarin** groves. **Avocado** harvest continued. Table **olive** harvest began in some areas. **Raspberry, blackberry, and strawberry** harvests continued along the Central Coast.

## NUT CROPS

**Almond** harvest continued in full swing. Orchard floors were cleaned, and trees were shaken. **Pistachio** and **pecan** orchards were harvested. Nut development continued in **walnut** orchards as walnuts neared full shell size.

## VEGETABLE CROPS

Across California, processing **tomatoes** continued to be harvested and sent to canneries. Cherry and heirloom tomatoes, and organic **watermelon** were harvested in the Capay Valley. In San Mateo County, **brussel sprouts, pumpkins, and green beans** were harvested. In the San Joaquin Valley melon harvest continued. In the Central Valley, **cucumbers, watermelon, cantaloupe, honeydew, sweet corn, zucchini, tomatillos, okra, eggplant, squash, garlic, carrots, bell peppers** and **onions** were harvested and sold at local stands. Along the Central Coast, **broccoli, brussel sprouts, cauliflower, celery, kale, garlic, squash, and lettuce** continued to be harvested. Hot weather has resulted in lower yields for tender lettuce varieties. In the Imperial Valley, bell peppers, eggplant, onions, melons, **chili peppers, green beans, and sweet corn** were harvested.

## LIVESTOCK

Rangeland and non-irrigated pasture were reported to be in poor to fair condition. Irrigated pasture remained in good condition. Supplemental feeding of cattle continued. Some cattle grazed upper elevation range, although forage was limited in some areas. With ongoing high temperatures, some dairies utilized heat mitigation measures including fans and sprinklers to reduce heat stress.

**CALIFORNIA CROP WEATHER – WEEK ENDING SEPTEMBER 8, 2024**

STATIONS	TEMPERATURE				GROWING DEGREE DAYS AT 50 °F BASE		RAIN DAYS <sup>1</sup>	PRECIPITATION <sup>2</sup>			
	Average for Week Ending Sep 8, 2024	Departure from Normal <sup>3</sup>	High	Low	This Year	Normal Year <sup>3</sup>	This Season	This Week	This Season	Normal Season <sup>3</sup>	Normal Year <sup>3</sup>
					Jan 1 - Sep 8, 2024	Jan 1 - Sep 8, 2024	Oct 1 - Sep 8, 2024	Week Ending Sep 8, 2024	Oct 1 - Sep 8, 2024	Oct 1 - Sep 8, 2024	Oct 1 - Sept 30
-- Degrees Fahrenheit --				-- Number --		-- Days --	-- Inches of Precipitation --				
<b>North Coast</b>											
Eureka WFO	NA	NA	NA	NA	NA	NA	NA	NA	NA	NA	40.61
Ukiah	NA	NA	NA	NA	NA	NA	NA	NA	NA	NA	35.07
Santa Rosa	NA	NA	NA	NA	NA	NA	NA	NA	NA	NA	34.00
Napa State Hospital	NA	NA	NA	NA	NA	NA	NA	NA	NA	NA	20.36
<b>Central Coast</b>											
San Francisco	NA	NA	NA	NA	NA	NA	NA	NA	NA	NA	19.77
San Jose	NA	NA	NA	NA	NA	NA	NA	NA	NA	NA	13.58
Salinas	NA	NA	NA	NA	NA	NA	NA	NA	NA	NA	12.66
Monterey	NA	NA	NA	NA	NA	NA	NA	NA	NA	NA	16.36
Paso Robles	NA	NA	NA	NA	NA	NA	NA	NA	NA	NA	12.24
<b>Sacramento Valley</b>											
Redding	NA	NA	NA	NA	NA	NA	NA	NA	NA	NA	33.70
Red Bluff	NA	NA	NA	NA	NA	NA	NA	NA	NA	NA	23.25
Orland	NA	NA	NA	NA	NA	NA	NA	NA	NA	NA	21.52
Oroville	NA	NA	NA	NA	NA	NA	NA	NA	NA	NA	25.84
Marysville	NA	NA	NA	NA	NA	NA	NA	NA	NA	NA	20.21
Sacramento	NA	NA	NA	NA	NA	NA	NA	NA	NA	NA	18.10
<b>San Joaquin Valley</b>											
Stockton	NA	NA	NA	NA	NA	NA	NA	NA	NA	NA	13.53
Modesto	NA	NA	NA	NA	NA	NA	NA	NA	NA	NA	12.34
Merced	NA	NA	NA	NA	NA	NA	NA	NA	NA	NA	11.87
Madera	NA	NA	NA	NA	NA	NA	NA	NA	NA	NA	10.86
Fresno	NA	NA	NA	NA	NA	NA	NA	NA	NA	NA	11.05
Lemoore	NA	NA	NA	NA	NA	NA	NA	NA	NA	NA	7.23
Visalia	NA	NA	NA	NA	NA	NA	NA	NA	NA	NA	10.37
Bakersfield	NA	NA	NA	NA	NA	NA	NA	NA	NA	NA	6.40
<b>Cascade Sierra</b>											
Alturas	NA	NA	NA	NA	NA	NA	NA	NA	NA	NA	11.72
Mount Shasta	NA	NA	NA	NA	NA	NA	NA	NA	NA	NA	37.86
Blue Canyon	NA	NA	NA	NA	NA	NA	NA	NA	NA	NA	62.80
Yosemite Valley	NA	NA	NA	NA	NA	NA	NA	NA	NA	NA	40.65
<b>South Coast</b>											
Santa Maria	NA	NA	NA	NA	NA	NA	NA	NA	NA	NA	13.42
Santa Barbara	NA	NA	NA	NA	NA	NA	NA	NA	NA	NA	17.38
Oxnard	NA	NA	NA	NA	NA	NA	NA	NA	NA	NA	13.05
Riverside	NA	NA	NA	NA	NA	NA	NA	NA	NA	NA	9.48
Los Angeles	NA	NA	NA	NA	NA	NA	NA	NA	NA	NA	12.33
San Diego	NA	NA	NA	NA	NA	NA	NA	NA	NA	NA	9.87
<b>Southeast Interior</b>											
Bishop	NA	NA	NA	NA	NA	NA	NA	NA	NA	NA	4.87
Daggett	NA	NA	NA	NA	NA	NA	NA	NA	NA	NA	3.80
Lancaster	NA	NA	NA	NA	NA	NA	NA	NA	NA	NA	6.86
Thermal	NA	NA	NA	NA	NA	NA	NA	NA	NA	NA	2.98
Blythe	NA	NA	NA	NA	NA	NA	NA	NA	NA	NA	3.58
Imperial	NA	NA	NA	NA	NA	NA	NA	NA	NA	NA	2.39

<sup>1</sup> Total number of days with precipitation events this season.  
<sup>2</sup> Rain or melted snow/ice.  
<sup>3</sup> Normal periods 1990-2020 used in departure from normal calculations.  
 (NA) Not available at time of publication.

Data retrieved from NOAA and NWS. Calculated by USDA NASS.  
 All rights reserved.

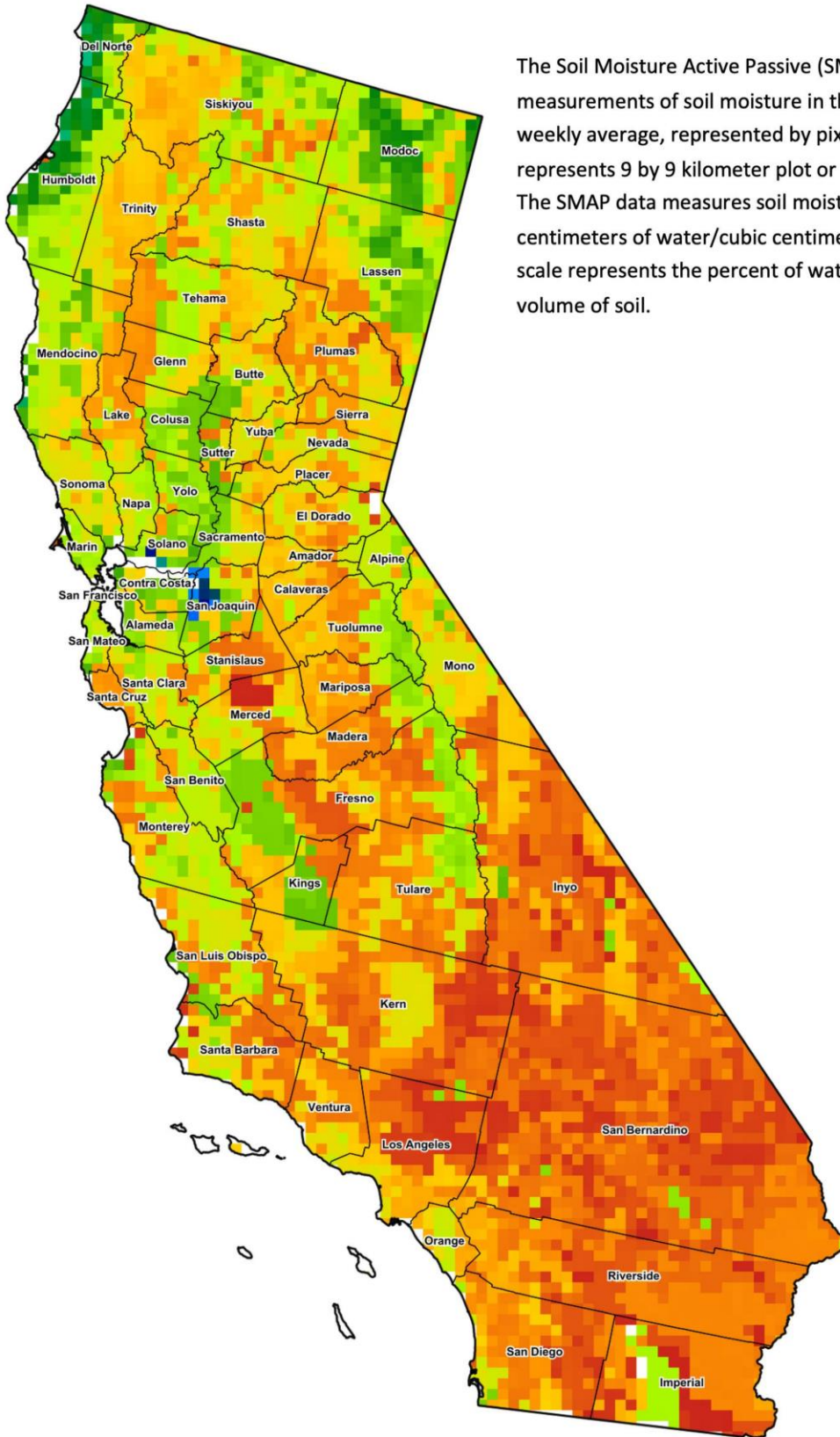
**Reservoir Data from the California Department of Water Resources**

Reservoir	Capacity	Sep 8, 2024			This Date Last Year	
		Storage	Percent of Capacity	Percent of Average	Storage	Percent of Capacity
		<i>Acre Feet</i>	<i>Percent</i>	<i>Percent</i>	<i>Acre Feet</i>	<i>Percent</i>
Shasta Lake	4,547,300	2,931,103	64	109	3,467,446	76
Lake Oroville	3,537,400	2,197,944	62	109	2,793,757	79
Trinity Lake	2,443,800	1,795,641	73	114	1,329,507	54
New Melones Reservoir	2,413,000	1,851,557	77	136	1,907,724	79
San Luis Reservoir	2,057,200	959,506	47	119	1,726,994	85
Don Pedro Reservoir	2,030,000	NA	NA	NA	1,789,209	88

Source: [cdec.water.ca.gov/reportapp/javareports?name=DLYHYDRO](https://cdec.water.ca.gov/reportapp/javareports?name=DLYHYDRO)



California Soil Moisture Map for the Week of August 26 - September 1, 2024



The Soil Moisture Active Passive (SMAP) provides measurements of soil moisture in the root zone as a weekly average, represented by pixels. Each pixel represents 9 by 9 kilometer plot or about 20,000 acres. The SMAP data measures soil moisture in cubic centimeters of water/cubic centimeters of soil. The scale represents the percent of water in a given volume of soil.

Percent Soil Moisture



Drought Conditions from the U.S. Drought Monitor as of 9/3/2024

Time	Percent of Land in Drought Rating						Drought Severity (DSCI)
	None	D0	D1	D2	D3	D4	
Current	45.59	46.05	8.36	0.00	0.00	0.00	63
Last Week	58.11	34.98	6.81	0.10	0.00	0.00	49
3 Months Ago	98.78	1.22	0.00	0.00	0.00	0.00	1
One Year Ago	93.53	6.25	0.22	0.00	0.00	0.00	7

The U.S. Drought Monitor is jointly produced by the National Drought Mitigation Center at the University of Nebraska-Lincoln, the United States Department of Agriculture, and the National Oceanic and Atmospheric Administration. [droughtmonitor.unl.edu/CurrentMap/StateDroughtMonitor.aspx?CA](https://droughtmonitor.unl.edu/CurrentMap/StateDroughtMonitor.aspx?CA)