



# California Crop Progress & Condition

Cooperating with the California Department of Food and Agriculture  
Pacific Region • 650 Capitol Mall, Suite 6-100 • Sacramento, CA 95814 • (916) 738-6600 • (855) 270-2722 FAX •  
[www.nass.usda.gov/ca](http://www.nass.usda.gov/ca)

**WEEK ENDING: September 1, 2024**  
**RELEASED: September 3, 2024**

**FREQUENCY: Weekly**  
**VOL. 44 NO. 75**

## WEATHER

Average low temperatures for California ranged from 32 to 67 in the mountains, 45 to 82 in the desert, 48 to 68 along the coast, and 54 to 72 in the Central Valley. Average high temperatures for the state ranged from 60 to 102 along the coast, 62 to 97 in the mountains, 84 to 105 in the Central Valley, and 90 to 112 in the desert.

## FIELD CROPS

In the Sacramento Valley, **sunflower** and **safflower** harvests continued. **Corn** and **rice** fields were drying down in preparation for harvest. Fall ground work was underway. In the San Joaquin Valley, corn and **alfalfa** fields were greenchopped and hauled to local dairies. **Cotton** bolls continued to mature. In Tulare County, corn fields were greenchopped. Cotton bolls were starting to form. Alfalfa fields were cut, dried, and baled. **Black-eyed beans** continued to grow with many plants producing pods. **Oat** and **triticale** seed crops were harvested and delivered to dealers. Irrigation was less of a necessity due to falling temperatures.

## FRUIT CROPS

Stone fruit and citrus orchards were fertilized and sprayed with fungicides, herbicides, and insecticides; pruning and shredding continued. Irrigation continued in stone fruit orchards. **Peach, plum, pluot,** and **nectarine** late variety harvests continued and heat related defects were observed. **Prunes** were harvested and sent to the dehydrators. **Fig** harvest continued. **Persimmons** were maturing and growers placed scaffolding supports in orchards. **Pomegranates** continued to develop and gain size. Early variety pomegranate harvest continued in some areas. Bartlett and Red **pear** harvests slowed, while Bosc pear harvest continued. **Grape** harvest continued in the Central Valley. **Kiwi** were harvested. **Grapefruit, lime,** and **lemon** harvests continued. Valencia **orange** harvest neared completion as the season was expected to finish well ahead of last year. **Avocado** harvest continued. Fruit thinning continued in **mandarin** groves. Citrus groves were sprayed with whitewash to prevent sunburn. Harvested citrus orchards were pruned, topped, and fertilized. **Olives** continued to develop as growers prepared for harvest. **Raspberry, blackberry,** and **strawberry** harvests continued along the Central Coast.

## NUT CROPS

**Almond** harvest continued in full swing. Orchard floors were cleaned, and trees were shaken. Nut development continued in **pistachio, pecan,** and **walnut** orchards. Pistachio clusters gained size as orchards were swept and cleared of debris before harvest. Pecan harvest continued. Walnuts neared full shell size.

## VEGETABLE CROPS

Across California, processing **tomatoes** continued to be harvested and sent to canneries. Cherry and heirloom tomatoes were harvested in the Capay Valley. In the Sacramento Valley, organic **watermelon** harvest was winding down. **Squash** continued to be harvested. In the Central Valley, **cucumbers,** watermelon, **cantaloupe,** watermelon, **sweet corn, zucchini, tomatillos, okra, eggplant, squash, garlic, carrots,** red **bell peppers** and **onions** were harvested and sold at local stands. Along the Central Coast, green bell peppers, **broccoli, brussel sprouts, cauliflower, celery, kale,** garlic, squash, and **lettuce** continued to be harvested. Cauliflower has experienced some quality issues due to increased insect population. In the Imperial Valley, eggplant, onions, melons, **chili peppers, green beans,** and sweet corn were harvested.

## LIVESTOCK

Rangeland and non-irrigated pasture were reported to be in poor to fair condition. Irrigated pasture remained in good condition. Sheep grazed on fallow fields and retired farmland. Supplemental feeding of cattle continued. Some cattle grazed upper elevation range, although forage was limited in some areas. With continued high temperatures in the San Joaquin Valley, some dairies utilized heat mitigation measures including fans and sprinklers to reduce heat stress.

**CALIFORNIA CROP WEATHER – WEEK ENDING SEPTEMBER 1, 2024**

STATIONS	TEMPERATURE				GROWING DEGREE DAYS AT 50 °F BASE		RAIN DAYS <sup>1</sup>	PRECIPITATION <sup>2</sup>			
	Average for Week Ending Sep 1, 2024	Departure from Normal <sup>3</sup>	High	Low	This Year	Normal Year <sup>3</sup>	This Season	This Week	This Season	Normal Season <sup>3</sup>	Normal Year <sup>3</sup>
					Jan 1 - Sep 1, 2024	Jan 1 - Sep 1, 2024	Oct 1 - Sep 1, 2024	Week Ending Sep 1, 2024	Oct 1 - Sep 1, 2024	Oct 1 - Sep 1, 2024	Oct 1 - Sept 30
	-- Degrees Fahrenheit --				-- Number --		-- Days --	-- Inches of Precipitation --			
<b>North Coast</b>											
Eureka WFO	58	0	67	51	1,075	907	132	0.00	48.38	39.94	40.61
Ukiah	77	4	102	53	3,552	2,878	86	0.00	38.40	34.91	35.07
Santa Rosa	69	1	96	49	2,743	2,332	76	0.00	37.56	33.87	34.00
Napa State Hospital	67	0	93	50	2,448	2,228	65	0.00	19.91	20.29	20.36
<b>Central Coast</b>											
San Francisco	66	1	86	55	2,283	2,242	67	0.00	20.24	19.70	19.77
San Jose	73	3	95	59	3,556	2,855	64	0.00	17.06	13.51	13.58
Salinas	65	1	82	54	2,249	2,107	62	0.00	14.75	12.61	12.66
Monterey	62	-1	72	51	1,705	1,893	74	0.00	17.38	16.29	16.36
Paso Robles	74	1	100	48	3,180	2,895	49	0.00	18.09	12.18	12.24
<b>Sacramento Valley</b>											
Redding	82	3	103	59	4,695	3,944	77	0.00	31.51	33.26	33.70
Red Bluff	81	3	102	59	4,411	3,861	69	0.00	21.85	23.06	23.25
Orland	79	3	98	60	4,292	3,602	65	0.00	21.96	21.28	21.52
Oroville	NA	NA	NA	NA	NA	3,814	NA	NA	NA	25.68	25.84
Marysville	79	3	100	57	4,272	3,557	64	0.00	19.27	20.10	20.21
Sacramento	NA	NA	NA	NA	NA	3,324	NA	NA	NA	18.01	18.10
<b>San Joaquin Valley</b>											
Stockton	78	1	101	57	4,097	3,704	59	0.00	14.41	13.45	13.53
Modesto	80	3	100	59	4,152	3,773	61	0.00	17.53	12.28	12.34
Merced	80	3	101	59	4,293	3,636	55	0.00	15.21	11.82	11.87
Madera	79	1	102	54	4,296	3,839	54	0.00	9.98	10.83	10.86
Fresno	83	2	101	63	4,948	4,289	50	0.00	10.01	11.00	11.05
Lemoore	NA	NA	NA	NA	NA	3,842	NA	NA	NA	7.19	7.23
Visalia	77	-1	97	60	4,673	3,832	46	0.00	10.12	10.30	10.37
Bakersfield	84	2	100	67	5,024	4,553	42	0.00	6.83	6.35	6.40
<b>Cascade Sierra</b>											
Alturas	65	2	95	38	1,755	1,510	78	0.00	10.50	11.38	11.72
Mount Shasta	70	5	97	40	2,277	1,685	88	0.00	40.83	37.36	37.86
Blue Canyon	72	3	82	56	2,346	1,783	88	0.00	60.03	62.22	62.80
Yosemite Valley	70	-1	81	52	1,998	2,255	83	0.00	36.21	40.00	40.65
<b>South Coast</b>											
Santa Maria	64	-1	84	52	2,061	2,209	53	0.00	17.20	13.35	13.42
Santa Barbara	66	0	78	57	2,536	2,431	43	0.00	25.17	17.31	17.38
Oxnard	67	0	77	61	2,663	2,801	42	0.00	21.70	12.97	13.05
Riverside	78	-2	96	60	4,165	4,217	39	0.00	12.46	9.37	9.48
Los Angeles	69	-2	79	62	3,052	3,376	40	0.00	19.61	12.22	12.33
San Diego	72	-1	81	64	3,515	3,685	45	0.00	12.43	9.75	9.87
<b>Southeast Interior</b>											
Bishop	73	-1	99	45	3,418	3,046	19	0.00	4.48	4.76	4.87
Daggett	87	0	106	64	5,585	5,152	24	0.00	4.23	3.64	3.80
Lancaster	78	-1	102	53	4,154	3,803	33	0.00	8.02	6.74	6.86
Thermal	90	1	111	67	6,478	6,163	13	0.00	2.25	2.67	2.98
Blythe	95	2	112	75	6,973	6,652	15	0.00	2.78	3.27	3.58
Imperial	NA	NA	NA	NA	NA	6,394	NA	NA	NA	2.22	2.39

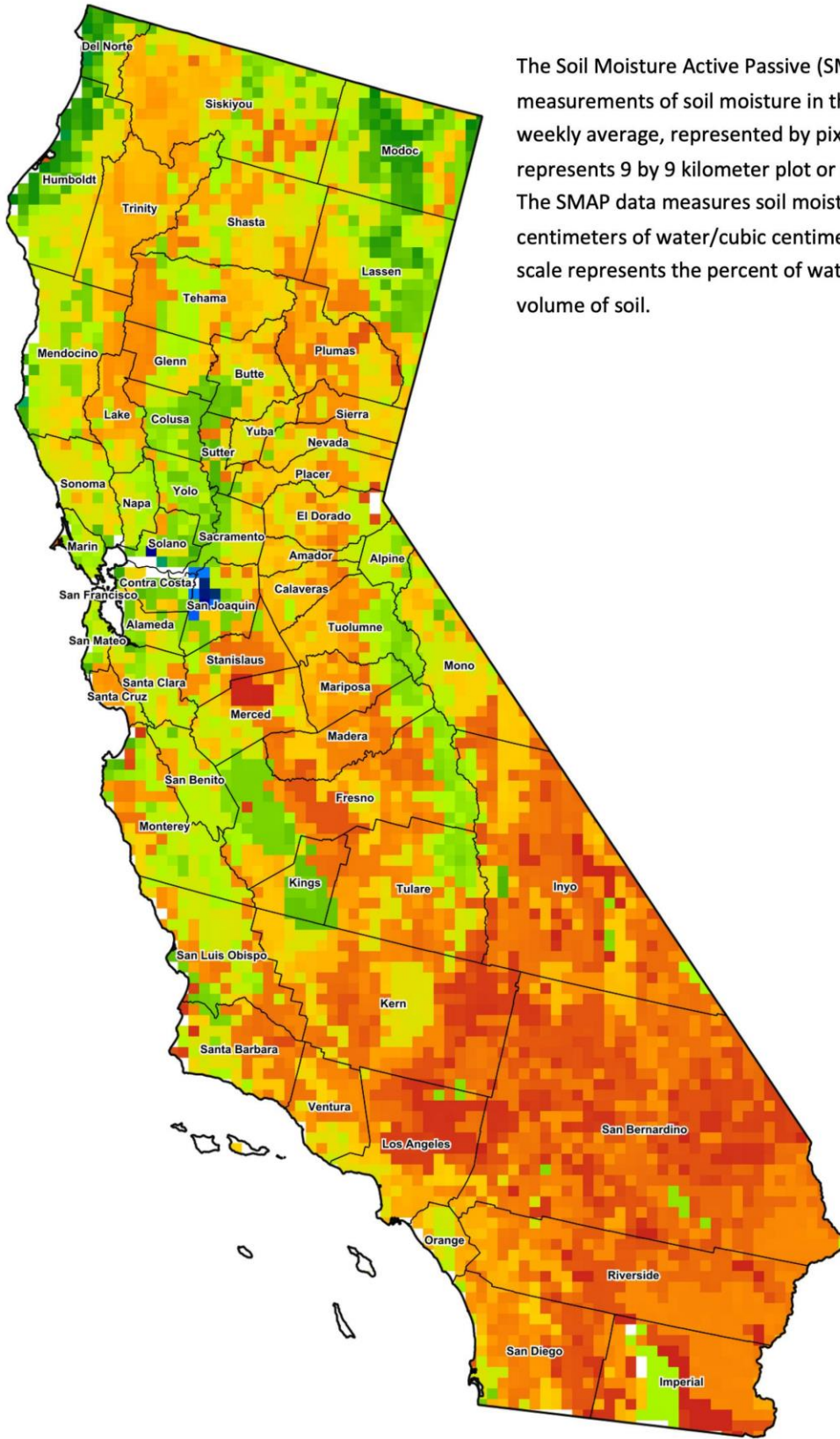
<sup>1</sup> Total number of days with precipitation events this season.  
<sup>2</sup> Rain or melted snow/ice.  
<sup>3</sup> Normal periods 1990-2020 used in departure from normal calculations.  
 (NA) Not available at time of publication.

Data retrieved from NOAA and NWS. Calculated by USDA NASS.  
 All rights reserved.

**Reservoir Data from the California Department of Water Resources**

Reservoir	Capacity	Sep 2, 2024			This Date Last Year	
		Storage	Percent of Capacity	Percent of Average	Storage	Percent of Capacity
		<i>Acre Feet</i>	<i>Percent</i>	<i>Percent</i>	<i>Acre Feet</i>	<i>Percent</i>
Shasta Lake	4,547,300	2,986,488	66	110	3,520,115	77
Lake Oroville	3,537,400	2,277,369	64	111	2,847,845	81
Trinity Lake	2,443,800	1,817,169	74	113	1,338,246	55
New Melones Reservoir	2,413,000	1,862,349	78	136	1,915,693	80
San Luis Reservoir	2,057,200	941,596	46	120	1,764,269	86
Don Pedro Reservoir	2,030,000	1,615,020	80	110	1,805,718	89

Source: [cdec.water.ca.gov/reportapp/javareports?name=DLYHYDRO](https://cdec.water.ca.gov/reportapp/javareports?name=DLYHYDRO)



**Drought Conditions from the U.S. Drought Monitor as of 8/27/2024**

Time	Percent of Land in Drought Rating						Drought Severity (DSCI)
	None	D0	D1	D2	D3	D4	
Current	58.11	34.98	6.81	0.10	0.00	0.00	49
Last Week	66.59	26.50	6.81	0.10	0.00	0.00	40
3 Months Ago	98.77	1.23	0.00	0.00	0.00	0.00	1
One Year Ago	93.35	5.30	1.35	0.00	0.00	0.00	8

The U.S. Drought Monitor is jointly produced by the National Drought Mitigation Center at the University of Nebraska-Lincoln, the United States Department of Agriculture, and the National Oceanic and Atmospheric Administration. [droughtmonitor.unl.edu/CurrentMap/StateDroughtMonitor.aspx?CA](http://droughtmonitor.unl.edu/CurrentMap/StateDroughtMonitor.aspx?CA)