



California Crop Progress & Condition

Cooperating with the California Department of Food and Agriculture
Pacific Region • 650 Capitol Mall, Suite 6-100 • Sacramento, CA 95814 • (916) 738-6600 • (855) 270-2722 FAX •
www.nass.usda.gov/ca

WEEK ENDING: August 25, 2024
RELEASED: August 26, 2024

FREQUENCY: Weekly
VOL. 44 NO. 74

WEATHER

Average low temperatures for California ranged from 32 to 59 in the mountains, 42 to 88 in the desert, 48 to 70 along the coast, and 55 to 68 in the Central Valley. Average high temperatures for the state ranged from 58 to 84 in the mountains, 65 to 105 along the coast, 75 to 105 in the Central Valley, and 85 to 113 in the desert.

FIELD CROPS

In the Sacramento Valley, **sunflower** and **safflower** fields were harvested. **Rice** fields continued to develop. In the San Joaquin Valley, the **cotton** crop progressed well, as bolls began to crack open. Producers focused on boll retention. Cotton fields were scouted for pests and equipment was prepared for harvest. In Tulare County, **corn** fields were chopped. Cotton plants were producing flowers and bolls began to form. **Alfalfa** fields were cut, dried, and baled. Irrigation was less of a necessity due to falling temperatures. **Black-eyed beans** continued to grow with many plants producing pods.

FRUIT CROPS

Stone fruit and citrus orchards were fertilized and sprayed with fungicides, herbicides, and insecticides; pruning and shredding continued. Irrigation continued in stone fruit orchards. Smoke from the Park Fire continued to settle in the Sacramento Valley. **Peach, plum, pluot, and nectarine** late variety harvests continued and heat related defects were observed. **Prunes** were harvested and sent to the dehydrators. **Fig** harvest continued. **Persimmons** were maturing and growers placed scaffolding supports in orchards. Early variety **pomegranate** harvest began in some areas. Bartlett, Bosc, and Red **pear** harvests continued. **Grape** harvest continued in the Coachella and Central Valleys. Some late variety grapes were covered with plastic sheeting to protect from the rain. **Kiwi** were harvested. Valencia **orange, grapefruit, lime, and lemon** harvests continued. **Avocado** harvest neared completion. Fruit thinning continued in **mandarin** groves. Citrus groves were sprayed with whitewash to prevent sunburn. Harvested citrus orchards were pruned, topped, and fertilized. **Olives** continued to develop as growers prepared for harvest. **Raspberry, blackberry, and strawberry** harvests continued along the Central Coast.

NUT CROPS

Almond harvest was in full swing. Orchard floors were cleaned, and trees were shaken. Nut development continued in **pistachio, pecan, and walnut** orchards. Pistachio clusters gained size as orchards were swept and cleared of debris before harvest. Pecan harvest continued. Walnuts neared full shell size. Insecticides were applied in walnut orchards.

VEGETABLE CROPS

Across California, processing **tomatoes** continued to be harvested and sent to canneries. Cherry and heirloom tomatoes, and organic **watermelon** were harvested in the Capay Valley. **Squash** harvest began. Melon and **onions** were harvested in the San Joaquin Valley. In the Central Valley, **cucumbers, watermelon, cantaloupe, honeydew, sweet corn, zucchini, tomatillos, okra, eggplant, squash, tomatoes, garlic, carrots, bell peppers** and onions were harvested and sold at local stands. Along the Central Coast, **broccoli, brussels sprouts, cauliflower, celery, kale, garlic, squash, and lettuce** continued to be harvested. Cooler temperatures helped slow growth and improved vegetable quality. In the Imperial Valley, bell peppers, eggplant, onions, melons, **chili peppers, green beans, and sweet corn** were harvested.

LIVESTOCK

Rangeland and non-irrigated pasture were reported to be in poor to fair condition. Irrigated pasture remained in good condition. Sheep grazed on fallow fields and retired farmland. Supplemental feeding of cattle continued. Some cattle grazed upper elevation range. Heat mitigation measures including fans and sprinklers were used to reduce heat stress at some San Joaquin Valley dairies.

CALIFORNIA CROP WEATHER – WEEK ENDING August 25, 2024

STATIONS	TEMPERATURE				GROWING DEGREE DAYS AT 50 °F BASE		RAIN DAYS ¹	PRECIPITATION ²			
	Average for Week Ending Aug 25, 2024	Departure from Normal ³	High	Low	This Year	Normal Year ³	This Season	This Week	This Season	Normal Season ³	Normal Year ³
					Jan 1 - Aug 25, 2024	Jan 1 - Aug 25, 2024	Oct 1 - Aug 25, 2024	Week Ending Aug 25, 2024	Oct 1 - Aug 25, 2024	Oct 1 - Aug 25, 2024	Oct 1 - Sept 30
	-- Degrees Fahrenheit --				-- Number --		-- Days --	-- Inches of Precipitation --			
North Coast											
Eureka WFO	60	2	68	50	NA	NA	NA	1.26	NA	NA	40.61
Ukiah	67	-7	91	51	NA	NA	NA	0.01	NA	NA	35.07
Santa Rosa	65	-3	90	48	NA	NA	NA	0.00	NA	NA	34.00
Napa State Hospital	66	-1	89	49	NA	NA	NA	0.00	NA	NA	20.36
Central Coast											
San Francisco	62	-3	76	52	NA	NA	NA	0.00	NA	NA	19.77
San Jose	70	0	89	59	NA	NA	NA	0.00	NA	NA	13.58
Salinas	66	2	84	52	NA	NA	NA	0.00	NA	NA	12.66
Monterey	63	0	75	52	NA	NA	NA	0.00	NA	NA	16.36
Paso Robles	70	-3	99	50	NA	NA	NA	0.00	NA	NA	12.24
Sacramento Valley											
Redding	74	-6	95	58	NA	NA	NA	0.06	NA	NA	33.70
Red Bluff	73	-6	94	56	NA	NA	NA	0.01	NA	NA	23.25
Orland	73	-4	90	57	NA	NA	NA	0.00	NA	NA	21.52
Oroville	74	-4	94	59	NA	NA	NA	0.00	NA	NA	25.84
Marysville	72	-4	95	56	NA	NA	NA	0.00	NA	NA	20.21
Sacramento	73	-2	95	55	NA	NA	NA	0.00	NA	NA	18.10
San Joaquin Valley											
Stockton	73	-4	95	56	NA	NA	NA	0.00	NA	NA	13.53
Modesto	74	-3	95	60	NA	NA	NA	0.00	NA	NA	12.34
Merced	74	-3	96	58	NA	NA	NA	0.00	NA	NA	11.87
Madera	74	-5	97	57	NA	NA	NA	0.00	NA	NA	10.86
Fresno	77	-5	97	61	NA	NA	NA	0.00	NA	NA	11.05
Lemoore	NA	NA	NA	NA	NA	NA	NA	NA	NA	NA	7.23
Visalia	77	-1	94	61	NA	NA	NA	0.00	NA	NA	10.37
Bakersfield	77	-6	95	60	NA	NA	NA	0.00	NA	NA	6.40
Cascade Sierra											
Alturas	58	-7	83	36	NA	NA	NA	0.02	NA	NA	11.72
Mount Shasta	60	-7	84	42	NA	NA	NA	0.46	NA	NA	37.86
Blue Canyon	63	-6	74	49	NA	NA	NA	0.00	NA	NA	62.80
Yosemite Valley	60	-12	74	46	NA	NA	NA	0.00	NA	NA	40.65
South Coast											
Santa Maria	65	1	84	51	NA	NA	NA	0.00	NA	NA	13.42
Santa Barbara	67	1	84	53	NA	NA	NA	0.00	NA	NA	17.38
Oxnard	68	1	81	59	NA	NA	NA	0.00	NA	NA	13.05
Riverside	80	0	105	61	NA	NA	NA	0.00	NA	NA	9.48
Los Angeles	72	1	84	63	NA	NA	NA	0.00	NA	NA	12.33
San Diego	75	2	84	68	NA	NA	NA	0.00	NA	NA	9.87
Southeast Interior											
Bishop	70	-5	100	42	NA	NA	NA	0.00	NA	NA	4.87
Daggett	86	-2	108	65	NA	NA	NA	0.00	NA	NA	3.80
Lancaster	76	-5	103	56	NA	NA	NA	0.00	NA	NA	6.86
Thermal	91	1	111	69	NA	NA	NA	0.00	NA	NA	2.98
Blythe	97	3	113	81	NA	NA	NA	0.00	NA	NA	3.58
Imperial	NA	NA	NA	NA	NA	NA	NA	NA	NA	NA	2.39

¹ Total number of days with precipitation events this season.
² Rain or melted snow/ice.
³ Normal periods 1990-2020 used in departure from normal calculations.
 (NA) Not available at time of publication.

Data retrieved from NOAA and NWS. Calculated by USDA NASS.
 All rights reserved.

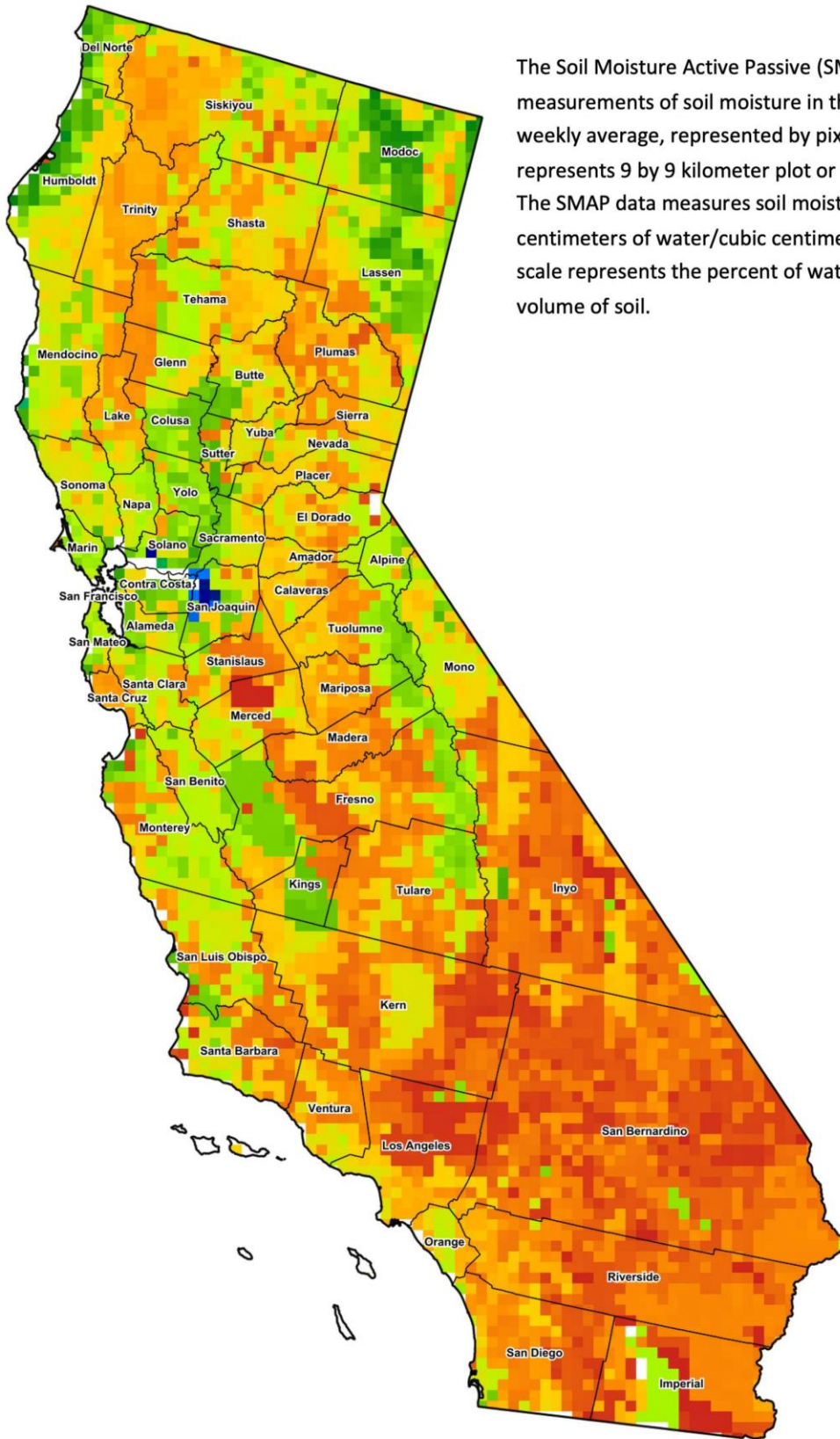
Reservoir Data from the California Department of Water Resources

Reservoir	Capacity	Aug 25, 2024			This Date Last Year	
		Storage	Percent of Capacity	Percent of Average	Storage	Percent of Capacity
	<i>Acre Feet</i>	<i>Acre Feet</i>	<i>Percent</i>	<i>Percent</i>	<i>Acre Feet</i>	<i>Percent</i>
Shasta Lake	4,547,300	3,075,185	68	109	3,594,776	79
Lake Oroville	3,537,400	2,378,634	67	112	2,940,867	83
Trinity Lake	2,443,800	1,842,964	75	113	1,351,058	55
New Melones Reservoir	2,413,000	1,875,731	78	135	1,941,562	81
San Luis Reservoir	2,057,200	906,892	44	113	1,773,237	87
Don Pedro Reservoir	2,030,000	1,643,591	81	110	1,827,119	90

Source: cdec.water.ca.gov/reportapp/javareports?name=DLYHYDRO



California Soil Moisture Map for the Week of August 12 - 18, 2024



The Soil Moisture Active Passive (SMAP) provides measurements of soil moisture in the root zone as a weekly average, represented by pixels. Each pixel represents 9 by 9 kilometer plot or about 20,000 acres. The SMAP data measures soil moisture in cubic centimeters of water/cubic centimeters of soil. The scale represents the percent of water in a given volume of soil.



Drought Conditions from the U.S. Drought Monitor as of 8/20/2024

Time	Percent of Land in Drought Rating						Drought Severity (DSCI)
	None	D0	D1	D2	D3	D4	
Current	66.59	26.50	6.81	0.10	0.00	0.00	40
Last Week	77.29	17.40	5.32	0.00	0.00	0.00	28
3 Months Ago	98.77	1.23	0.00	0.00	0.00	0.00	1
One Year Ago	93.33	5.30	1.38	0.00	0.00	0.00	8

The U.S. Drought Monitor is jointly produced by the National Drought Mitigation Center at the University of Nebraska-Lincoln, the United States Department of Agriculture, and the National Oceanic and Atmospheric Administration. droughtmonitor.unl.edu/CurrentMap/StateDroughtMonitor.aspx?CA