



California Crop Progress & Condition

Cooperating with the California Department of Food and Agriculture
Pacific Region • 650 Capitol Mall, Suite 6-100 • Sacramento, CA 95814 • (916) 738-6600 • (855) 270-2722 FAX •
www.nass.usda.gov/ca

WEEK ENDING: August 4, 2024
RELEASED: August 5, 2024

FREQUENCY: Weekly
VOL. 44 NO. 71

WEATHER

Average low temperatures for California ranged from 32 to 66 in the mountains, 51 to 70 along the coast, 52 to 90 in the desert, and 58 to 78 in the Central Valley. Average high temperatures for the state ranged from 62 to 100 in the mountains, 64 to 105 along the coast, 87 to 107 in the Central Valley, and 94 to 112 in the desert.

FIELD CROPS

In the Sacramento Valley, heading in **rice** fields continued. **Sunflower** and **safflower** harvests began. In San Mateo County, **dry beans** continued to develop. In the San Joaquin Valley, **cotton** squaring and boll set progressed. In Tulare County, **corn** fields were tasseling and setting ears, with many fields near full height. Cotton fields continued to develop. **Alfalfa** fields were cut, dried, and baled. Dry bean fields continued to grow with some fields producing pods. Irrigation continued for all crops.

FRUIT CROPS

Stone fruit and citrus orchards were fertilized and sprayed with fungicides, herbicides, and insecticides; pruning and shredding continued. Irrigation continued in stone fruit orchards as temperatures remained high. Smoke from the Park Fire continued to settle in the Sacramento Valley causing some difficulty with harvest. **Peach, plum, and nectarine** harvests were in full swing. Prolonged excessive heat has slowed peach growth and growers were concerned about fruit size. There were some reports of other crops also being negatively impacted by the heat. **Prunes** were harvested and sent to the dehydrators. **Fig** harvest continued. **Persimmons, pomegranates,** and Asian **pears** continued to develop. Bartlett pear harvest continued in the Sacramento Delta region. **Grape** harvest continued in the Coachella and Central Valleys. Fog attributed to mildew pressure in wine grapes throughout the Central Coast. Growers pulled leaves to allow for better airflow and light. **Kiwi** canopies were tended to and tied. Valencia **orange, grapefruit, lemon,** and **avocado** harvests continued. Netting continued to be removed from mandarin and **tangerine** orchards. Citrus groves were sprayed with whitewash to prevent sunburn. **Olives** continued to develop as growers began to prepare for harvest. **Raspberry, blackberry,** and **strawberry** harvests continued along the Central Coast.

NUT CROPS

Additional irrigation continued due to high day and nighttime temperatures. **Almond** harvest began in parts of the Central Valley. Nut development continued in **pistachio, pecan,** and **walnut** orchards. Pistachio clusters gained size. Walnuts neared full shell size. Insecticides were applied in walnut orchards.

VEGETABLE CROPS

Across California, processing **tomatoes** continued to be harvested and sent to canneries. Extreme temperatures caused sunburn in some truckloads. Organic tomatoes and **watermelon** were harvested in the Capay Valley. In the Central Valley, **cucumbers, watermelon, cantaloupe, honeydew, sweet corn, zucchini, tomatillos, okra, eggplant, squash,** tomatoes, **garlic, carrots, bell peppers** and **onions** were harvested and sold at local fruit stands. Along the Central Coast, **broccoli, brussel sprouts, cauliflower, celery, kale,** garlic, squash, and **lettuce** continued to be harvested. Warmer temperatures resulted in decreased yields and quality issues in lettuce varieties. In the Imperial Valley, bell peppers, eggplant, onions, melons, **chili peppers, green beans,** and sweet corn were harvested.

LIVESTOCK

Rangeland and non-irrigated pasture were reported to be in poor to fair condition. Irrigated pasture remained in good to excellent condition. Sheep grazed on fallow fields and retired farmland. Bees were active in squash and melon fields. Supplemental feeding of cattle continued. Some cattle grazed upper elevation and some foothill range due to forage quality decline at lower elevation range. Wildfire forced livestock evacuations continued as weather conditions hampered the suppression of the Park Fire in Butte, Plumas, Shasta, and Tehama Counties. Heat stress mitigation measures, including fans and sprinklers, continued to be implemented at many dairies in the San Joaquin Valley.

CALIFORNIA CROP WEATHER – WEEK ENDING August 4, 2024

STATIONS	TEMPERATURE				GROWING DEGREE DAYS AT 50 °F BASE		RAIN DAYS ¹	PRECIPITATION ²			
	Average for Week Ending Aug 4, 2024	Departure from Normal ³	High	Low	This Year	Normal Year ³	This Season	This Week	This Season	Normal Season ³	Normal Year ³
					Jan 1 - Aug 4, 2024	Jan 1 - Aug 4, 2024	Oct 1 - Aug 4, 2024	Week Ending Aug 4, 2024	Oct 1 - Aug 4, 2024	Oct 1 - Aug 4, 2024	Oct 1 - Sept 30
-- Degrees Fahrenheit --				-- Number --		-- Days --	-- Inches of Precipitation --				
North Coast											
Eureka WFO	61	3	68	55	NA	NA	NA	0.01	NA	NA	40.61
Ukiah	79	3	105	52	NA	NA	NA	0.00	NA	NA	35.07
Santa Rosa	71	3	94	51	NA	NA	NA	0.00	NA	NA	34.00
Napa State Hospital	68	1	82	53	NA	NA	NA	0.00	NA	NA	20.36
Central Coast											
San Francisco	61	-3	69	54	NA	NA	NA	0.00	NA	NA	19.77
San Jose	72	2	86	61	NA	NA	NA	0.00	NA	NA	13.58
Salinas	64	1	74	54	NA	NA	NA	0.00	NA	NA	12.66
Monterey	60	-2	68	52	NA	NA	NA	0.01	NA	NA	16.36
Paso Robles	76	2	100	52	NA	NA	NA	0.00	NA	NA	12.24
Sacramento Valley											
Redding	85	2	107	63	NA	NA	NA	0.00	NA	NA	33.70
Red Bluff	83	1	105	64	NA	NA	NA	0.00	NA	NA	23.25
Orland	80	2	100	61	NA	NA	NA	0.00	NA	NA	21.52
Oroville	83	3	103	62	NA	NA	NA	0.00	NA	NA	25.84
Marysville	81	3	103	59	NA	NA	NA	0.00	NA	NA	20.21
Sacramento	81	5	103	59	NA	NA	NA	0.00	NA	NA	18.10
San Joaquin Valley											
Stockton	80	2	101	58	NA	NA	NA	0.00	NA	NA	13.53
Modesto	82	3	100	62	NA	NA	NA	0.00	NA	NA	12.34
Merced	81	2	102	61	NA	NA	NA	0.00	NA	NA	11.87
Madera	80	0	104	59	NA	NA	NA	0.00	NA	NA	10.86
Fresno	84	0	104	66	NA	NA	NA	0.00	NA	NA	11.05
Lemoore	NA	NA	NA	NA	NA	NA	NA	NA	NA	NA	7.23
Visalia	83	2	102	64	NA	NA	NA	0.00	NA	NA	10.37
Bakersfield	85	0	100	68	NA	NA	NA	0.00	NA	NA	6.40
Cascade Sierra											
Alturas	71	2	100	43	NA	NA	NA	0.00	NA	NA	11.72
Mount Shasta	72	3	96	49	NA	NA	NA	0.00	NA	NA	37.86
Blue Canyon	72	1	85	58	NA	NA	NA	0.00	NA	NA	62.80
Yosemite Valley	68	-6	82	54	NA	NA	NA	0.06	NA	NA	40.65
South Coast											
Santa Maria	64	0	77	52	NA	NA	NA	0.00	NA	NA	13.42
Santa Barbara	65	-1	77	52	NA	NA	NA	0.00	NA	NA	17.38
Oxnard	65	-2	74	56	NA	NA	NA	0.00	NA	NA	13.05
Riverside	82	2	102	61	NA	NA	NA	0.00	NA	NA	9.48
Los Angeles	67	-3	76	60	NA	NA	NA	0.00	NA	NA	12.33
San Diego	72	0	83	65	NA	NA	NA	0.00	NA	NA	9.87
Southeast Interior											
Bishop	78	0	103	52	NA	NA	NA	0.00	NA	NA	4.87
Daggett	89	-1	105	69	NA	NA	NA	0.09	NA	NA	3.80
Lancaster	82	-1	102	60	NA	NA	NA	0.00	NA	NA	6.86
Thermal	93	1	110	70	NA	NA	NA	0.00	NA	NA	2.98
Blythe	98	2	112	76	NA	NA	NA	0.00	NA	NA	3.58
Imperial	NA	NA	NA	NA	NA	NA	NA	NA	NA	NA	2.39

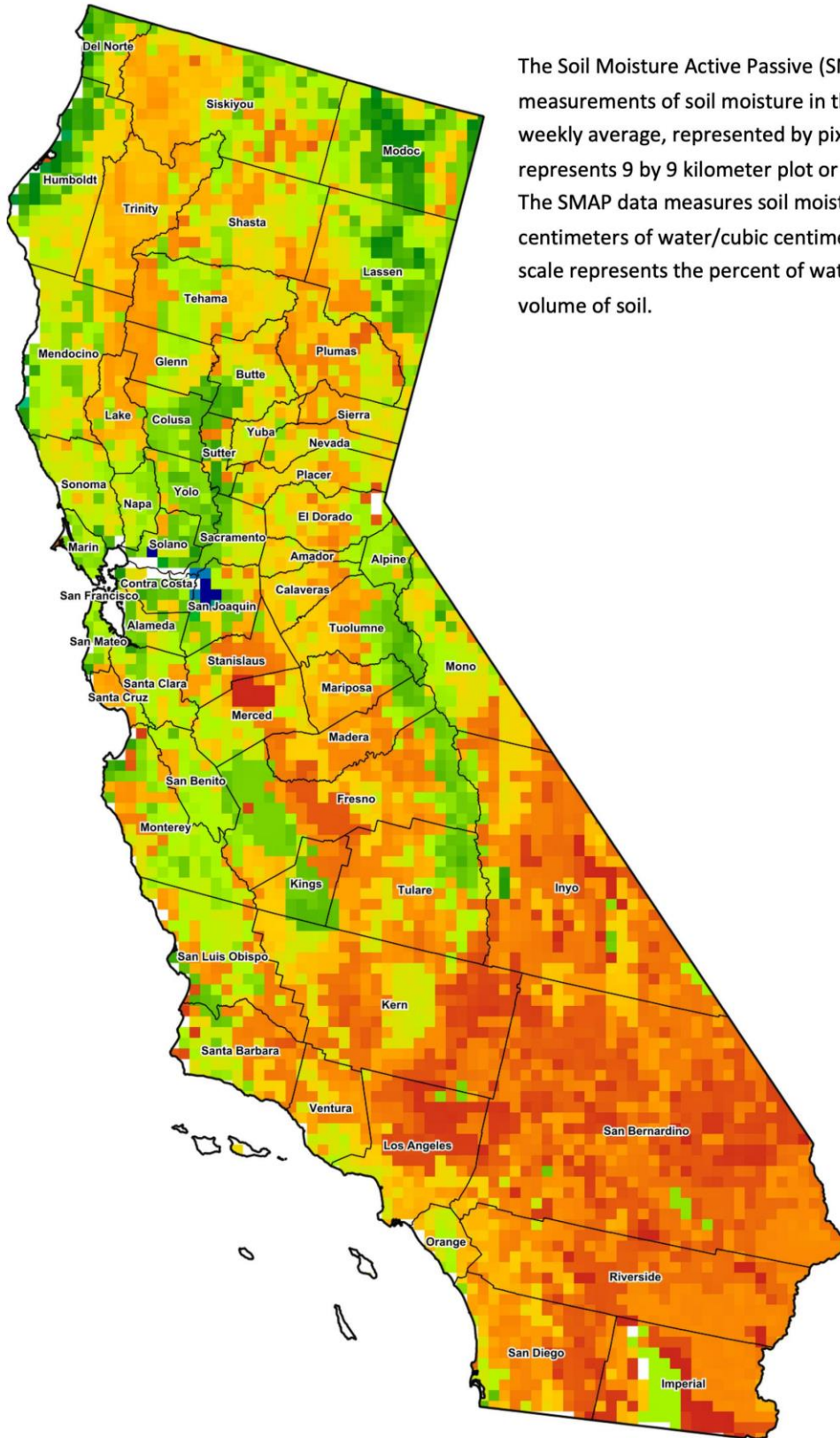
¹ Total number of days with precipitation events this season.
² Rain or melted snow/ice.
³ Normal periods 1990-2020 used in departure from normal calculations.
 (NA) Not available at time of publication.

Data retrieved from NOAA and NWS. Calculated by USDA NASS.
 All rights reserved.

Reservoir Data from the California Department of Water Resources

Reservoir	Capacity	Aug 4, 2024			This Date Last Year	
		Storage	Percent of Capacity	Percent of Average	Storage	Percent of Capacity
		<i>Acre Feet</i>	<i>Percent</i>	<i>Percent</i>	<i>Acre Feet</i>	<i>Percent</i>
Shasta Lake	4,547,300	3,384,554	74	111	3,836,086	84
Lake Oroville	3,537,400	2,691,508	76	116	3,173,487	90
Trinity Lake	2,443,800	1,920,141	78	111	1,397,347	57
New Melones Reservoir	2,413,000	1,923,356	80	134	2,015,765	84
San Luis Reservoir	2,057,200	870,337	43	101	1,829,822	90
Don Pedro Reservoir	2,030,000	1,727,633	85	109	1,947,138	96

Source: cdec.water.ca.gov/reportapp/javareports?name=DLYHYDRO



Drought Conditions from the U.S. Drought Monitor as of 7/30/2024

Time	Percent of Land in Drought Rating						Drought Severity (DSCI)
	None	D0	D1	D2	D3	D4	
Current	78.78	16.77	4.44	0.00	0.00	0.00	26
Last Week	78.80	16.76	4.44	0.00	0.00	0.00	26
3 Months Ago	97.32	2.68	0.00	0.00	0.00	0.00	3
One Year Ago	74.43	19.05	6.52	0.00	0.00	0.00	32

The U.S. Drought Monitor is jointly produced by the National Drought Mitigation Center at the University of Nebraska-Lincoln, the United States Department of Agriculture, and the National Oceanic and Atmospheric Administration. droughtmonitor.unl.edu/CurrentMap/StateDroughtMonitor.aspx?CA