



# California Crop Progress & Condition

Cooperating with the California Department of Food and Agriculture  
Pacific Region • 650 Capitol Mall, Suite 6-100 • Sacramento, CA 95814 • (916) 738-6600 • (855) 270-2722 FAX •  
[www.nass.usda.gov/ca](http://www.nass.usda.gov/ca)

**WEEK ENDING: July 28, 2024**  
**RELEASED: July 29, 2024**

**FREQUENCY: Weekly**  
**VOL. 44 NO. 70**

## WEATHER

Average low temperatures for California ranged from 32 to 74 in the mountains, 50 to 70 along the coast, 62 to 82 in the Central Valley, and 63 to 92 in the desert. Average high temperatures for the state ranged from 62 to 108 along the coast, 62 to 100 in the mountains, 95 to 111 in the Central Valley, and 104 to 116 in the desert.

## FIELD CROPS

In the Sacramento Valley, heading in **rice** fields continued. Processing **tomatoes** were harvested and trucked to canneries. In San Mateo County, **dry beans** continued to develop. In the San Joaquin Valley, **cotton** squaring and boll set progressed. In Tulare County, **corn** crops were tasseling and setting ears, with many fields near full height. Cotton and tomato fields continued to develop. **Alfalfa** fields were cut for a second time. Winter grain harvest was complete. Dry bean fields continued to grow with some fields producing pods. Irrigation continued for all crops.

## FRUIT CROPS

Stone fruit and citrus orchards were fertilized and sprayed with fungicides, herbicides, and insecticides; pruning and shredding continued. Smoke from the Park Fire settled in the Sacramento Valley causing some difficulty with harvest. Irrigation continued in stone fruit orchards as temperatures remained high. **Peach, plum, and nectarine** harvests were in full swing. **Prunes** were harvested and sent to the dehydrators. Extreme temperatures aided in the **fig** harvest starting two weeks earlier than usual. **Persimmons, pomegranates,** and Asian **pears** continued to develop. Bartlett pear harvest continued in the Sacramento Delta region. Table **grape** harvest continued in the Coachella Valley and gained momentum in the Central Valley. Fog attributed to mildew pressure in wine grapes throughout the Central Coast. Growers pulled leaves to allow for better airflow and light. Shoot thinning continued. **Kiwi** canopies were tended to and tied. Valencia **orange, grapefruit, lemon,** and **avocado** harvests continued. Netting continued to be removed from mandarin and **tangerine** orchards. Citrus groves were sprayed with whitewash to prevent sunburn. **Olives** continued to develop. **Raspberry, blackberry,** and **strawberry** harvests continued along the Central Coast.

## NUT CROPS

Additional irrigation continued due to high day and nighttime temperatures. **Almond** hull split continued in some areas as growers prepared for harvest. Nut development continued in **pistachio, pecan,** and **walnut** orchards. Insecticides were applied in walnut orchards.

## VEGETABLE CROPS

Across California, **tomatoes** continued to be harvested and sent to canneries. In the Sacramento Valley, settling smoke from the Park Fire has made harvesting difficult. Organic cherry and heirloom tomatoes were harvested. Organic **watermelon** harvest continued in the Capay Valley. In the Central Valley, watermelon, **cantaloupe,** and **honeydew** continued to flower. **Sweet corn, zucchini, eggplant, squash,** and **onions** continued to develop. **Garlic, carrots,** and **bell peppers** were harvested. Along the Central Coast, **broccoli, brussel sprouts, cauliflower, celery, kale,** garlic, squash, and **lettuce** continued to be harvested. In the Imperial Valley, bell peppers, carrots, eggplant, onions, melons, **chili peppers, green beans,** and sweet corn were harvested.

## LIVESTOCK

Rangeland and non-irrigated pasture were reported to be in poor to fair condition. Non-irrigated pasture quality deterioration continued. Irrigated pasture remained in good to excellent condition. Sheep grazed on fallow fields and retired farmland. Bees were active in squash and melon fields in the Sacramento and San Joaquin Valleys. Cattle on poor quality range were provided supplemental feed. Some cattle grazed upper elevation and some foothill range due to forage quality decline at lower elevation range. The Park Fire forced evacuations in several north state counties as it impacted summer range occupied by some cattle and bees. In the San Joaquin Valley, heat stress mitigation measures, including fans and sprinklers, were utilized at some dairies.

**CALIFORNIA CROP WEATHER – WEEK ENDING JULY 28, 2024**

STATIONS	TEMPERATURE				GROWING DEGREE DAYS AT 50 °F BASE		RAIN DAYS <sup>1</sup>	PRECIPITATION <sup>2</sup>			
	Average for Week Ending Jul 28, 2024	Departure from Normal <sup>3</sup>	High	Low	This Year	Normal Year <sup>3</sup>	This Season	This Week	This Season	Normal Season <sup>3</sup>	Normal Year <sup>3</sup>
					Jan 1 - Jul 28, 2024	Jan 1 - Jul 28, 2024	Oct 1 - Jul 28, 2024	Week Ending Jul 28, 2024	Oct 1 - Jul 28, 2024	Oct 1 - Jul 28, 2024	Oct 1 - Sept 30
	-- Degrees Fahrenheit --				-- Number --		-- Days --	-- Inches of Precipitation --			
<b>North Coast</b>											
Eureka WFO	57	-1	64	50	NA	NA	NA	0.00	NA	NA	40.61
Ukiah	86	10	108	62	NA	NA	NA	0.00	NA	NA	35.07
Santa Rosa	77	9	100	54	NA	NA	NA	0.00	NA	NA	34.00
Napa State Hospital	73	6	91	53	NA	NA	NA	0.00	NA	NA	20.36
<b>Central Coast</b>											
San Francisco	66	2	78	54	NA	NA	NA	0.00	NA	NA	19.77
San Jose	80	10	97	61	NA	NA	NA	0.00	NA	NA	13.58
Salinas	65	2	76	55	NA	NA	NA	0.00	NA	NA	12.66
Monterey	64	2	75	53	NA	NA	NA	0.00	NA	NA	16.36
Paso Robles	81	7	104	55	NA	NA	NA	0.00	NA	NA	12.24
<b>Sacramento Valley</b>											
Redding	94	10	111	73	NA	NA	NA	0.00	NA	NA	33.70
Red Bluff	92	10	109	72	NA	NA	NA	0.00	NA	NA	23.25
Orland	88	9	103	73	NA	NA	NA	0.00	NA	NA	21.52
Oroville	90	9	108	73	NA	NA	NA	0.00	NA	NA	25.84
Marysville	89	10	108	68	NA	NA	NA	0.00	NA	NA	20.21
Sacramento	85	8	107	62	NA	NA	NA	0.00	NA	NA	18.10
<b>San Joaquin Valley</b>											
Stockton	89	10	109	66	NA	NA	NA	0.00	NA	NA	13.53
Modesto	91	12	108	71	NA	NA	NA	0.00	NA	NA	12.34
Merced	91	12	111	70	NA	NA	NA	0.00	NA	NA	11.87
Madera	91	10	111	68	NA	NA	NA	0.00	NA	NA	10.86
Fresno	94	10	110	76	NA	NA	NA	0.00	NA	NA	11.05
Lemoore	NA	NA	NA	NA	NA	NA	NA	NA	NA	NA	7.23
Visalia	89	8	105	76	NA	NA	NA	0.00	NA	NA	10.37
Bakersfield	95	10	109	79	NA	NA	NA	0.00	NA	NA	6.40
<b>Cascade Sierra</b>											
Alturas	78	9	100	55	NA	NA	NA	0.00	NA	NA	11.72
Mount Shasta	79	10	100	58	NA	NA	NA	0.00	NA	NA	37.86
Blue Canyon	81	10	88	74	NA	NA	NA	0.00	NA	NA	62.80
Yosemite Valley	78	4	86	70	NA	NA	NA	0.00	NA	NA	40.65
<b>South Coast</b>											
Santa Maria	66	2	80	53	NA	NA	NA	0.00	NA	NA	13.42
Santa Barbara	66	0	74	59	NA	NA	NA	0.00	NA	NA	17.38
Oxnard	67	0	74	61	NA	NA	NA	0.00	NA	NA	13.05
Riverside	85	6	101	68	NA	NA	NA	0.00	NA	NA	9.48
Los Angeles	70	0	76	65	NA	NA	NA	0.00	NA	NA	12.33
San Diego	74	3	79	68	NA	NA	NA	0.00	NA	NA	9.87
<b>Southeast Interior</b>											
Bishop	84	5	105	63	NA	NA	NA	0.00	NA	NA	4.87
Daggett	97	7	113	84	NA	NA	NA	0.00	NA	NA	3.80
Lancaster	91	8	107	73	NA	NA	NA	0.00	NA	NA	6.86
Thermal	98	6	114	81	NA	NA	NA	0.00	NA	NA	2.98
Blythe	103	7	116	91	NA	NA	NA	0.00	NA	NA	3.58
Imperial	101	7	114	85	NA	NA	NA	0.00	NA	NA	2.39

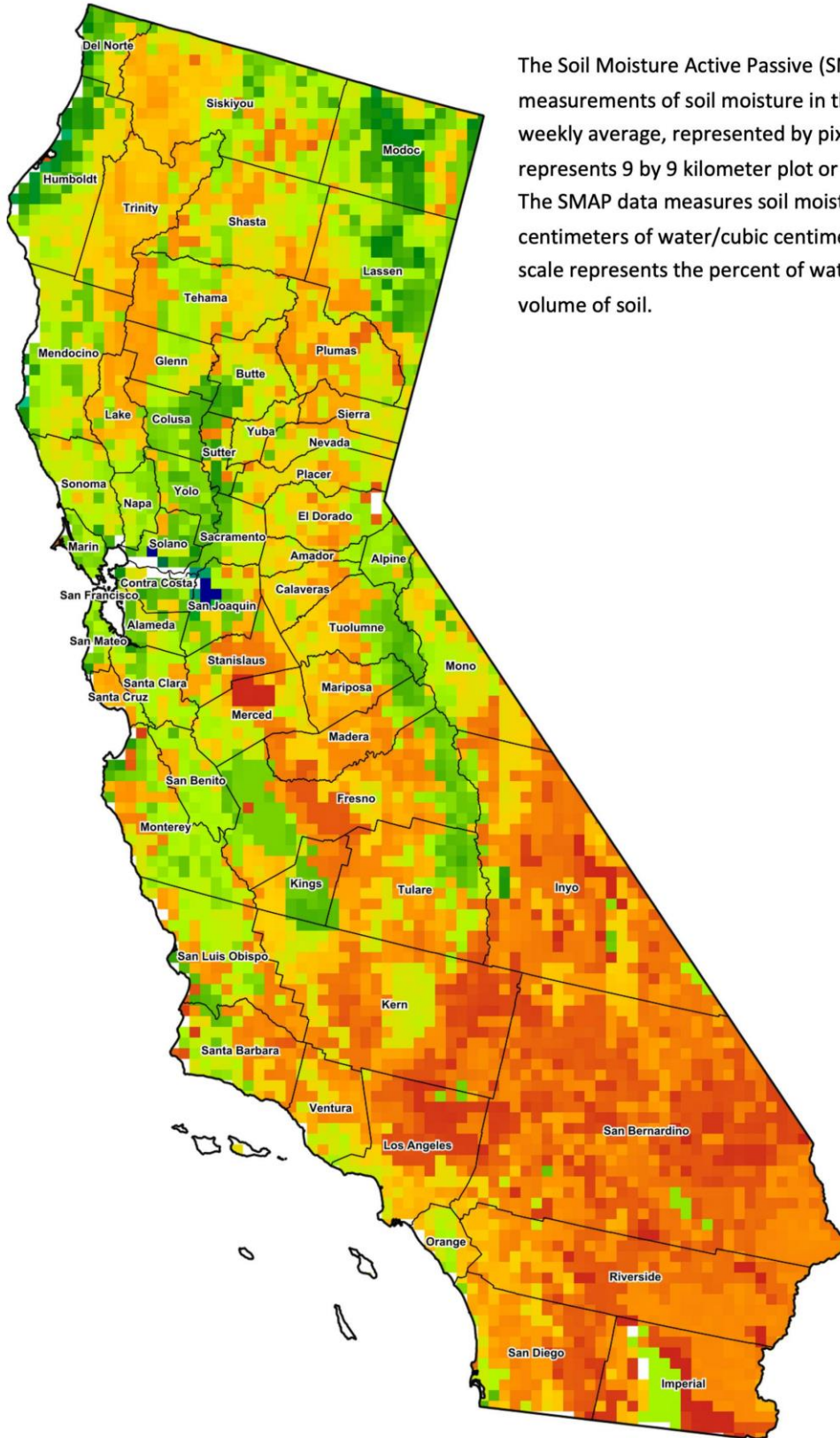
<sup>1</sup> Total number of days with precipitation events this season.  
<sup>2</sup> Rain or melted snow/ice.  
<sup>3</sup> Normal periods 1990-2020 used in departure from normal calculations.  
 (NA) Not available at time of publication.

Data retrieved from NOAA and NWS. Calculated by USDA NASS.  
 All rights reserved.

**Reservoir Data from the California Department of Water Resources**

Reservoir	Capacity	July 28, 2024			This Date Last Year	
		Storage	Percent of Capacity	Percent of Average	Storage	Percent of Capacity
	<i>Acre Feet</i>	<i>Acre Feet</i>	<i>Percent</i>	<i>Percent</i>	<i>Acre Feet</i>	<i>Percent</i>
Shasta Lake	4,547,300	3,507,260	77	112	3,929,486	86
Lake Oroville	3,537,400	2,801,945	79	118	3,285,844	93
Trinity Lake	2,443,800	1,945,082	79	110	1,408,373	58
New Melones Reservoir	2,413,000	1,940,151	81	133	2,039,974	85
San Luis Reservoir	2,057,200	878,469	43	98	1,874,271	92
Don Pedro Reservoir	2,030,000	1,764,663	87	110	1,966,032	97

Source: [cdec.water.ca.gov/reportapp/javareports?name=DLYHYDRO](https://cdec.water.ca.gov/reportapp/javareports?name=DLYHYDRO)



**Drought Conditions from the U.S. Drought Monitor as of 7/23/2024**

Time	Percent of Land in Drought Rating						Drought Severity (DSCI)
	None	D0	D1	D2	D3	D4	
Current	78.80	16.76	4.44	0.00	0.00	0.00	26
Last Week	78.80	19.59	1.62	0.00	0.00	0.00	23
3 Months Ago	97.32	2.68	0.00	0.00	0.00	0.00	3
One Year Ago	74.43	19.28	6.29	0.00	0.00	0.00	32

The U.S. Drought Monitor is jointly produced by the National Drought Mitigation Center at the University of Nebraska-Lincoln, the United States Department of Agriculture, and the National Oceanic and Atmospheric Administration. [droughtmonitor.unl.edu/CurrentMap/StateDroughtMonitor.aspx?CA](http://droughtmonitor.unl.edu/CurrentMap/StateDroughtMonitor.aspx?CA)