



# California Crop Progress & Condition

Cooperating with the California Department of Food and Agriculture  
Pacific Region • 650 Capitol Mall, Suite 6-100 • Sacramento, CA 95814 • (916) 738-6600 • (855) 270-2722 FAX •  
[www.nass.usda.gov/ca](http://www.nass.usda.gov/ca)

**WEEK ENDING: June 23, 2024**  
**RELEASED: June 24, 2024**

**FREQUENCY: Weekly**  
**VOL. 44 NO. 65**

## WEATHER

Average low temperatures for California ranged from 30 to 57 in the mountains, 39 to 79 in the desert, 43 to 64 along the coast, and 51 to 70 in the Central Valley. Average high temperatures for the state ranged from 57 to 102 along the coast, 62 to 94 in the mountains, 82 to 113 in the desert, and 83 to 108 in the Central Valley.

## FIELD CROPS

In the Sacramento Valley, **wheat** harvest progressed under very good conditions. In Stanislaus County, **corn** continued to grow, with some tasseling. **Oats** and **alfalfa** were chopped and baled. In Tulare County, corn and **cotton** progressed, with fields at various heights and stages of growth. Insecticides were applied to cotton fields to combat increased lygus infestations. Alfalfa fields were cut, dried, and baled. Most harvested winter grain fields were fertilized, tilled, and planted with summer silage crops such as corn and **sorghum**, with some fields left fallow due to the cost of water. Aerial pesticide applications continued for forage crops.

## FRUIT CROPS

Stone fruit orchards were fertilized and sprayed with fungicides, herbicides, and insecticides; pruning and shredding activities were in full swing. Irrigation continued due to warmer temperatures. **Peach, plum,** and **nectarine** harvests continued. Fruit development continued in **grape** and **kiwi** vineyards. Grape harvest in the Coachella Valley was in full swing. **Apricot** and **cherry** harvests neared completion. **Persimmons, pomegranates,** and Asian **pears** continued to develop. Citrus groves were sprayed with whitewash to prevent leaves and fruit from sunburn. Valencia **orange** harvest continued. **Grapefruit, mandarin, minneola,** and **lemon** harvests continued. Netting was removed from seedless mandarins and tangerines. **Olive** bloom was complete, and fruit continued to develop. Warmer temperatures presented challenges for berries. **Blueberry, blackberry** and **strawberry** harvests continued. **Raspberry** harvest continued along the central coast.

## NUT CROPS

Warm summer temperatures increased the presence of different pests such as ants and mites. Growers continued to apply fungicides, herbicides, and insecticides as needed. Irrigation usage increased with high temperatures in the Central Valley. Nut development continued in **almond, pecan,** and **walnut** orchards. Growers placed husk fly traps in walnut groves. **Pistachio** nut fill neared completion in the northern part of the state. In the southern part of the state, pistachio shells were hardening as growers prepared for nut fill.

## VEGETABLE CROPS

In the Sacramento Valley, processing **tomatoes** continued to develop with crown set bloom happening in early planted fields. Organic cherry tomato harvest began. In the San Joaquin Valley, **melons** continued to develop, and **sweet potatoes** were planted. In the Central Valley, **sweet corn, zucchini,** and melons continued to develop. **Eggplant, carrots, squash, onions, bell peppers,** and **garlic** continued to be harvested. **Watermelon, cantaloupe,** and **honeydew** continued to grow and flower. Along the Central Coast, **broccoli, brussel sprouts, cauliflower, celery, kale,** garlic, and **lettuce** continued to be harvested. Quality issues were reported in broccoli and tender leaf lettuce. In the Imperial Valley, bell peppers, eggplant, onions, cantaloupe, **chili peppers, green beans,** and sweet corn were harvested.

## LIVESTOCK

Rangeland and non-irrigated pasture were reported to be in fair to good condition. Hot weather was drying out non-irrigated pasture. Irrigated pasture was in good to excellent condition. Bees were active in melon fields. Sheep grazed on fallow fields, retired farmland, and orchard weeds. Some cattle were moved to upper elevation range as valley and foothill range conditions deteriorated. Heat stress mitigation measures, including fans and sprinklers, were utilized at some dairies in the San Joaquin Valley.

**CALIFORNIA CROP WEATHER – WEEK ENDING JUNE 23, 2024**

STATIONS	TEMPERATURE				GROWING DEGREE DAYS AT 50 °F BASE		RAIN DAYS <sup>1</sup>	PRECIPITATION <sup>2</sup>			
	Average for Week Ending Jun 23, 2024	Departure from Normal <sup>3</sup>	High	Low	This Year	Normal Year <sup>3</sup>	This Season	This Week	This Season	Normal Season <sup>3</sup>	Normal Year <sup>3</sup>
					Jan 1 - Jun 23, 2024	Jan 1 - Jun 23, 2024	Oct 1 - Jun 23, 2024	Week Ending Jun 23, 2024	Oct 1 - Jun 23, 2024	Oct 1 - Jun 23, 2024	Oct 1 - Sept 30
-- Degrees Fahrenheit --					-- Number --		-- Days --	-- Inches of Precipitation --			
<b>North Coast</b>											
Eureka WFO	53	-3	61	44	NA	NA	NA	0.02	NA	NA	40.61
Ukiah	72	2	102	46	NA	NA	NA	0.00	NA	NA	35.07
Santa Rosa	66	-1	89	45	NA	NA	NA	0.00	NA	NA	34.00
Napa State Hospital	63	-3	86	46	NA	NA	NA	0.00	NA	NA	20.36
<b>Central Coast</b>											
San Francisco	59	-4	74	51	NA	NA	NA	0.00	NA	NA	19.77
San Jose	69	1	89	54	NA	NA	NA	0.00	NA	NA	13.58
Salinas	59	-3	74	47	NA	NA	NA	0.00	NA	NA	12.66
Monterey	56	-4	68	47	NA	NA	NA	0.00	NA	NA	16.36
Paso Robles	70	0	97	43	NA	NA	NA	0.00	NA	NA	12.24
<b>Sacramento Valley</b>											
Redding	79	1	108	57	NA	NA	NA	0.00	NA	NA	33.70
Red Bluff	77	-1	102	56	NA	NA	NA	0.00	NA	NA	23.25
Orland	76	0	93	57	NA	NA	NA	0.00	NA	NA	21.52
Oroville	NA	NA	NA	NA	NA	NA	NA	NA	NA	NA	25.84
Marysville	75	0	95	55	NA	NA	NA	0.00	NA	NA	20.21
Sacramento	NA	NA	NA	NA	NA	NA	NA	NA	NA	NA	18.10
<b>San Joaquin Valley</b>											
Stockton	73	-2	96	51	NA	NA	NA	0.00	NA	NA	13.53
Modesto	75	0	96	56	NA	NA	NA	0.00	NA	NA	12.34
Merced	75	0	96	52	NA	NA	NA	0.00	NA	NA	11.87
Madera	74	-2	97	53	NA	NA	NA	0.00	NA	NA	10.86
Fresno	77	-2	96	59	NA	NA	NA	0.00	NA	NA	11.05
Lemoore	NA	NA	NA	NA	NA	NA	NA	NA	NA	NA	7.23
Visalia	76	0	93	59	NA	NA	NA	0.00	NA	NA	10.37
Bakersfield	78	-2	96	60	NA	NA	NA	0.00	NA	NA	6.40
<b>Cascade Sierra</b>											
Alturas	59	-2	90	30	NA	NA	NA	0.00	NA	NA	11.72
Mount Shasta	65	3	94	35	NA	NA	NA	0.00	NA	NA	37.86
Blue Canyon	NA	NA	NA	NA	NA	NA	NA	NA	NA	NA	62.80
Yosemite Valley	60	-7	74	48	NA	NA	NA	0.00	NA	NA	40.65
<b>South Coast</b>											
Santa Maria	58	-4	73	47	NA	NA	NA	0.00	NA	NA	13.42
Santa Barbara	62	-1	73	51	NA	NA	NA	0.00	NA	NA	17.38
Oxnard	64	0	72	56	NA	NA	NA	0.00	NA	NA	13.05
Riverside	74	0	94	59	NA	NA	NA	0.00	NA	NA	9.48
Los Angeles	67	0	73	60	NA	NA	NA	0.00	NA	NA	12.33
San Diego	67	-1	73	61	NA	NA	NA	0.00	NA	NA	9.87
<b>Southeast Interior</b>											
Bishop	70	-4	98	39	NA	NA	NA	0.00	NA	NA	4.87
Daggett	83	-2	103	62	NA	NA	NA	0.00	NA	NA	3.80
Lancaster	78	0	98	56	NA	NA	NA	0.00	NA	NA	6.86
Thermal	92	5	111	70	NA	NA	NA	0.00	NA	NA	2.98
Blythe	91	1	113	73	NA	NA	NA	0.00	NA	NA	3.58
Imperial	89	1	109	70	NA	NA	NA	0.00	NA	NA	2.39

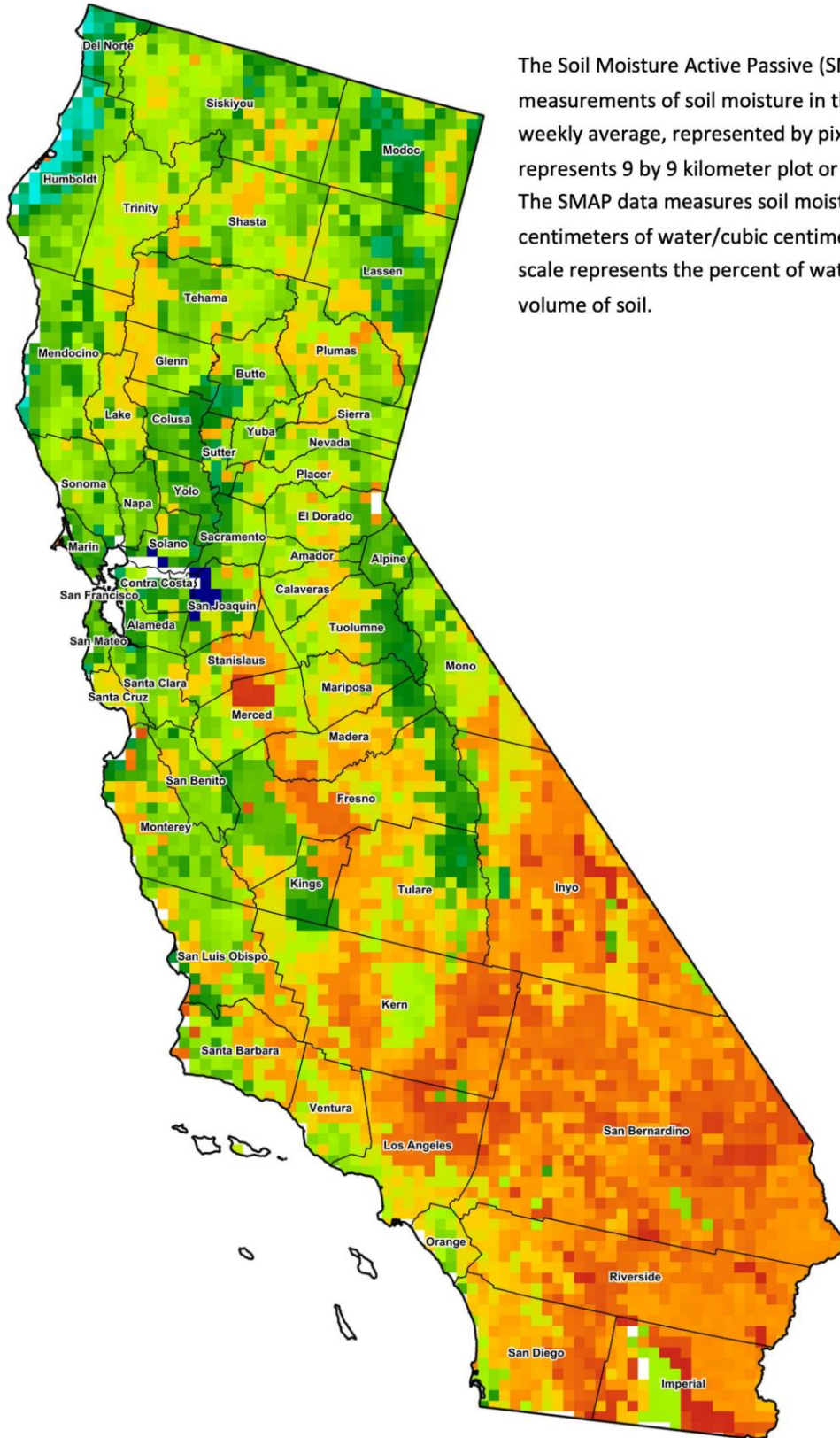
<sup>1</sup> Total number of days with precipitation events this season.  
<sup>2</sup> Rain or melted snow/ice.  
<sup>3</sup> Normal periods 1990-2020 used in departure from normal calculations.  
 (NA) Not available at time of publication.

Data retrieved from NOAA and NWS. Calculated by USDA NASS.  
 All rights reserved.

**Reservoir Data from the California Department of Water Resources**

Reservoir	Capacity	June 23, 2024			This Date Last Year	
		Storage	Percent of Capacity	Percent of Average	Storage	Percent of Capacity
	<i>Acre Feet</i>	<i>Acre Feet</i>	<i>Percent</i>	<i>Percent</i>	<i>Acre Feet</i>	<i>Percent</i>
Shasta Lake	4,547,300	4,107,334	90	114	4,349,032	96
Lake Oroville	3,537,400	3,437,297	97	126	3,529,358	100
Trinity Lake	2,443,800	2,068,863	85	109	1,415,520	58
New Melones Reservoir	2,413,000	2,042,438	85	136	2,013,654	84
San Luis Reservoir	2,057,200	1,059,383	52	90	2,015,650	99
Don Pedro Reservoir	2,030,000	1,928,385	95	116	1,725,459	85

Source: [cdec.water.ca.gov/reportapp/javareports?name=DLYHYDRO](https://cdec.water.ca.gov/reportapp/javareports?name=DLYHYDRO)



**Drought Conditions from the U.S. Drought Monitor as of 6/18/2024**

Time	Percent of Land in Drought Rating						Drought Severity (DSCI)
	None	D0	D1	D2	D3	D4	
Current	98.79	1.21	0.00	0.00	0.00	0.00	1
Last Week	98.79	1.21	0.00	0.00	0.00	0.00	1
3 Months Ago	95.46	4.54	0.00	0.00	0.00	0.00	5
One Year Ago	72.32	23.05	4.63	0.00	0.00	0.00	32

The U.S. Drought Monitor is jointly produced by the National Drought Mitigation Center at the University of Nebraska-Lincoln, the United States Department of Agriculture, and the National Oceanic and Atmospheric Administration. [droughtmonitor.unl.edu/CurrentMap/StateDroughtMonitor.aspx?CA](http://droughtmonitor.unl.edu/CurrentMap/StateDroughtMonitor.aspx?CA)