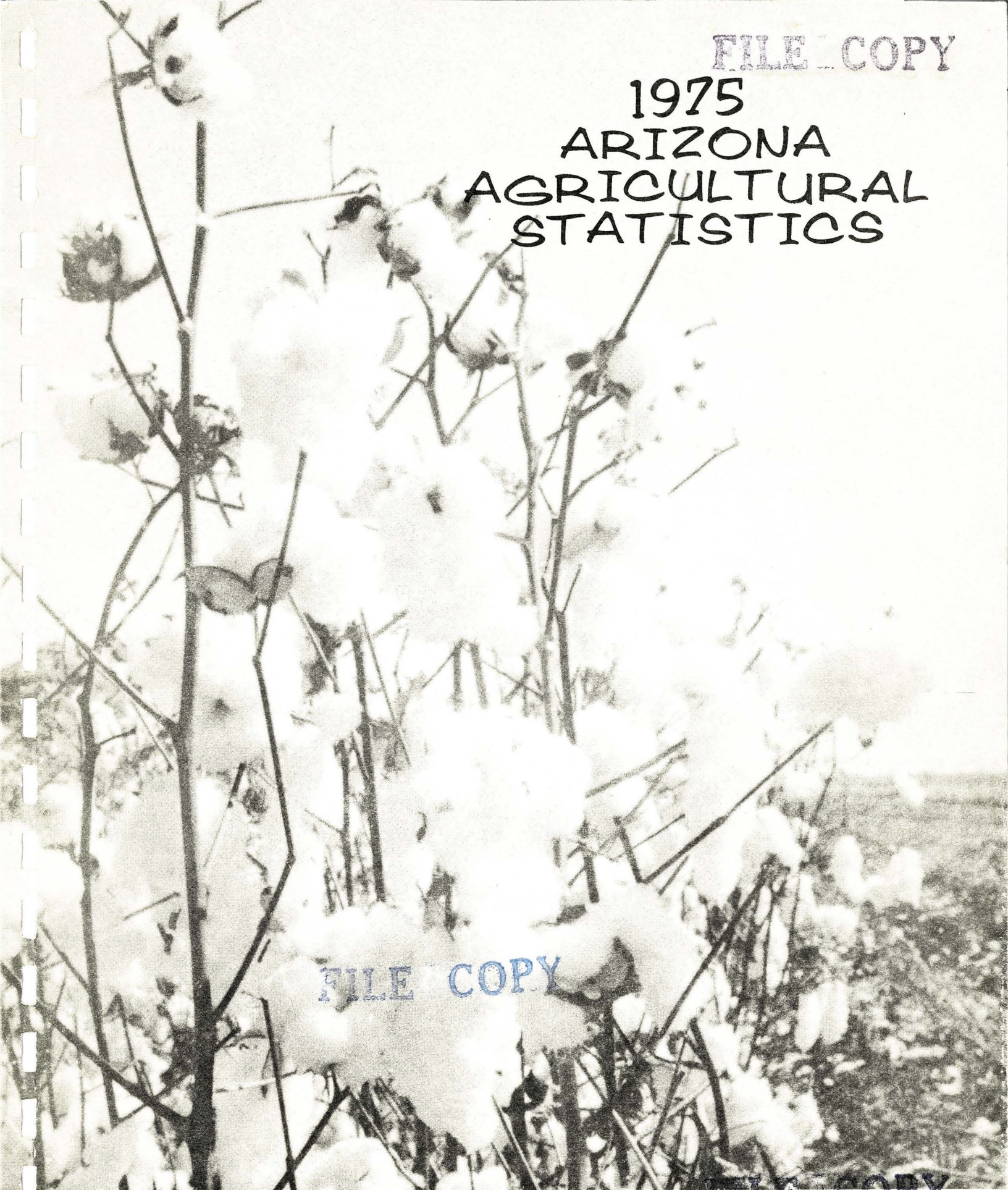


FILE COPY

1975
ARIZONA
AGRICULTURAL
STATISTICS



FILE COPY

FILE COPY

Arizona Crop and Livestock Reporting Service

WHY CROP AND LIVESTOCK REPORTS

A man's judgment is no better than his facts and crop reports are the basic facts of Agriculture.

They aid farmers in planning their production and marketing.

They are essential in enacting wise legislation affecting Agriculture.

They are the basis for analysis of agriculture and other business conditions.

They enable railroads to make a better distribution of cars for moving farm products.

They give producers the same foresight to future price trends that organized dealers possess.

They are a check on fluctuation in price. Uncertainty of supply promotes undue fluctuation in price.

They are indispensable in times of war because food is as essential as ammunition and weapons of war.

They are the best basis for adjusting supply to demand which is highly essential if maximum price is to prevail.

They aid farm organizations, schools and others in planning constructive programs, and the prospective purchaser of land.

They give information on surplus and deficit areas of production making possible a more economical distribution of products.

They eliminate the ill effects of misleading reports that might be circulated for private gain, if there were no official reports.

They are a guide to farm resources and for developing new resources such as irrigation, electric power, location of food processing and other factories.

They reduce the amount of speculation in farm products. Speculation thrives on uncertainty. Unbiased official crop reports reduce uncertainty which limits speculation.

They indicate potential buying power thereby enabling the manufacturer to meet the probable demand. With economical production and distribution, the manufacturer can sell at a lower price than he could with uncertain demand.

They reduce the risk of ownership of buyers of farm products which enables them to do business on a smaller margin. Under the stimulus of competition, they pay producers higher prices than could be paid if uncertainty of production existed.

They provide an accurate, unbiased picture of Arizona's agriculture. The facts on present and prospective supplies furnish a sound basis for judgment and action by farmers, other individuals, business men, railroads, crop and livestock interests and governmental agencies.

ARIZONA AGRICULTURAL STATISTICS



Crop
Reporting
Board

Statistical Reporting
Service

U.S. Department
of Agriculture

Compiled by

ARIZONA CROP AND LIVESTOCK REPORTING SERVICE
Horace M. Mayes, Statistician in Charge
Wes Britton, Assistant Statistician in Charge
3001 Federal Building
Telephone (602) 261-3264
Phoenix, Arizona 85025

A Cooperative Function of

THE UNIVERSITY OF ARIZONA
College of Agriculture
Department of Agricultural Economics

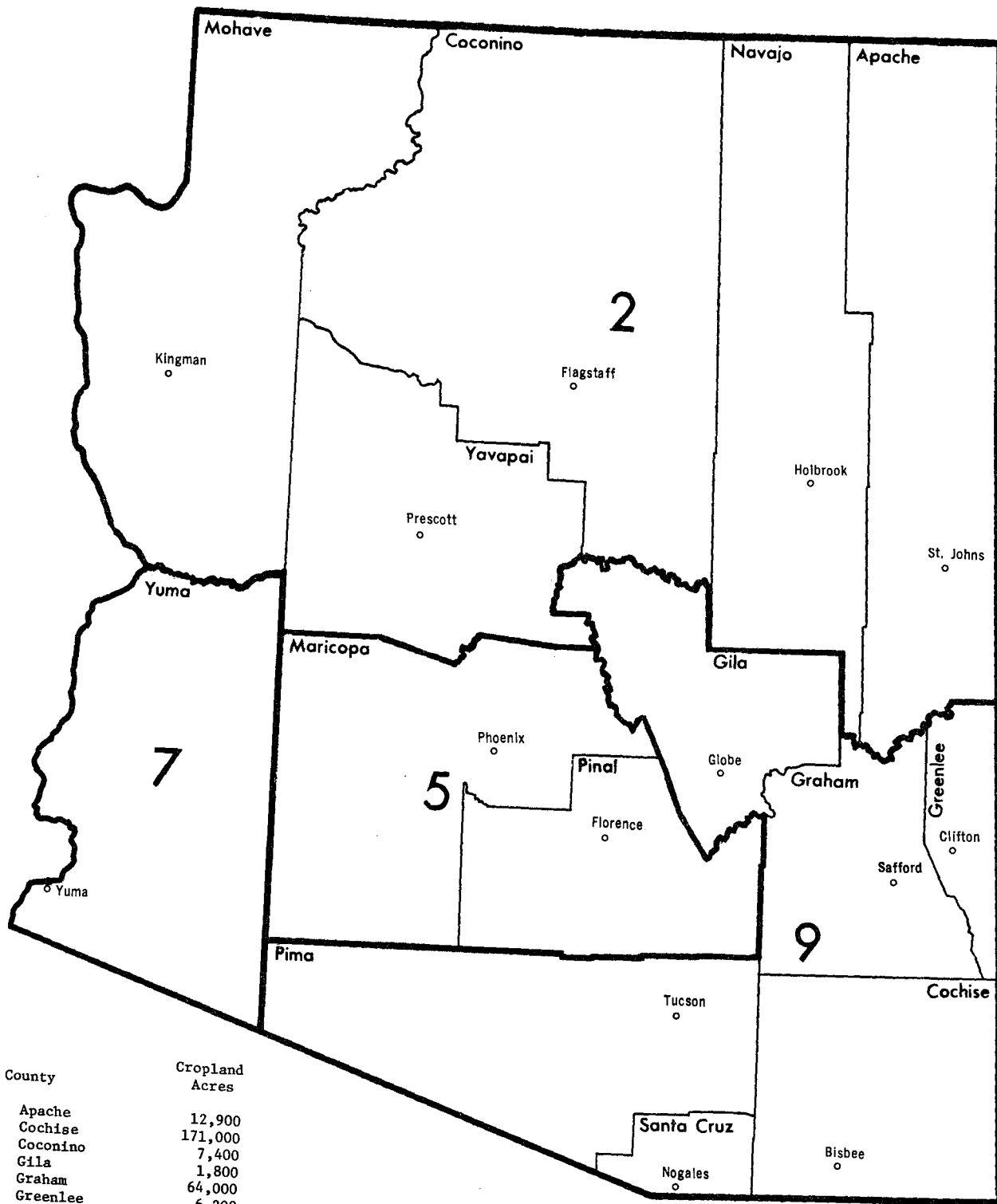
U. S. DEPARTMENT OF AGRICULTURE
Statistical Reporting Service

John P. Schaefer, President
Gerald R. Stairs, Dean of Agriculture
Jimmye S. Hillman, Head, Department
of Agricultural Economics

William C. Kibler, Administrator
Bruce M. Graham, Deputy Administrator
James L. Olson, Assistant Administrator



ARIZONA COUNTIES AND CROP REPORTING DISTRICTS



County	Cropland Acres
Apache	12,900
Cochise	171,000
Coconino	7,400
Gila	1,800
Graham	64,000
Greenlee	6,200
Maricopa	539,000
Mohave	5,300
Navajo	8,100
Pima	74,000
Pinal	391,000
Santa Cruz	7,300
Yavapai	9,400
Yuma	281,100
State Total	1,578,500

TABLE OF CONTENTS

	<u>Page</u>
INTRODUCTION	iii
REPORTS AND RELEASE DATES.	1
CASH RECEIPTS.	2-3
1975 AGRICULTURAL SUMMARY.	4
FIELD CROPS.	5-27
Cotton.	6-11
Barley.	12-13
Wheat	14-15
Corn.	16-17
Sorghum	18-19
Hay	20-25
Safflower	26
Sugarbeets.	27
VEGETABLES, MELONS AND POTATOES.	28-39
FRUIT.	40-44
CATTLE	45-48
CATTLE ON FEED	49-53
HOGS	54-55
SHEEP.	56-59
POULTRY.	60-61
HONEY AND BEESWAX.	62
LAND STATUS, ARIZONA	63
WEATHER DATA	64-65
ARIZONA WATER SUPPLY OUTLOOK	66

P H O T O G R A P H Y A C K N O W L E D G M E N T S

The cover photograph and some additional pictures within the bulletin were supplied by Mr. Ray Wyatt, Phoenix, Arizona.



I N T R O D U C T I O N

The Arizona Crop and Livestock Reporting Service is a cooperative function of The University of Arizona, College of Agriculture, and the United States Department of Agriculture, Statistical Reporting Service. The purpose of this joint effort is to coordinate the collection, analysis and publication of agricultural statistics.

The Service prepares, and makes available to all interested persons, two types of information. First, what has already happened -- acres harvested, yield per acre or cattle placed in feedlots. Second, predictions or forecasts -- intentions to plant, expected yields and expected marketings. These are projections. Final outcomes will be affected by weather, disease, insects and other factors. Accuracy of this type of information increases as the production period draws to a close. At each point, however, these data are useful for planning the next step in the production and marketing process.

The Service relies on voluntary reports from sample surveys of farm and ranch operators to establish State and County estimates of crops produced, livestock numbers, prices paid and received by farmers, farm labor and other significant items. Such data benefit farmers and ranchers, agribusiness and consumers.

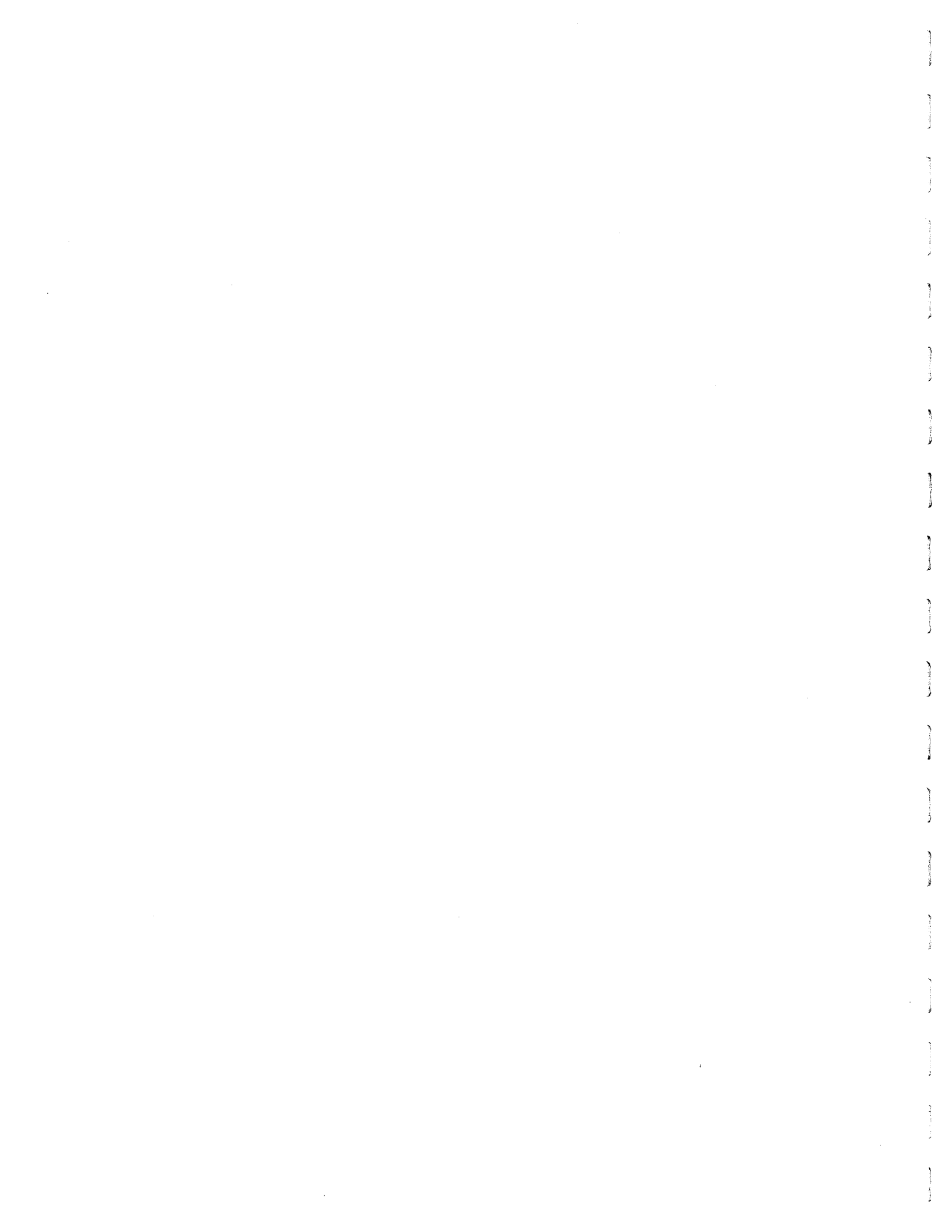
Data collected are examined for reasonableness and representation of the total population sampled. Summaries and estimates are submitted to the Statistical Reporting Service, Crop Reporting Board in Washington, D.C. The Board reviews the State estimates, tabulates a national summary and publishes the data for each crop or item by States. The Arizona Crop and Livestock Reporting Service publishes about 200 of those reports each year. Farmers, ranchers and other interested persons are mailed copies of requested reports. The same reports are supplied to news media throughout Arizona.

Individual producers, suppliers of production items and marketing firms make business decisions based on the total supply and demand of products they produce and market. The more information they have on supply and demand -- past, present and expected -- the better decisions they will be able to make. Specific decisions on what, when and where to produce and market their products results from past and expected action by others.

Agricultural data assists in the defining and evaluating of the role of agriculture in the national economy. Policy decisions with direct and indirect influence on individual commodities and commodity groups are based on analysis of these data. Data in this eleventh annual publication, Arizona Agricultural Statistics are of vital importance to the ongoing progressive agriculture of the State.



Jimmye S. Hillman, Head
Department of Agricultural Economics
The University of Arizona



ARIZONA AGRICULTURAL STATISTICS

1

THE FOLLOWING REPORTS ARE AVAILABLE UPON REQUEST FROM
THE ARIZONA CROP AND LIVESTOCK REPORTING SERVICE

NAME OF REPORT	FREQUENCY OF REPORT	APPROXIMATE DATE OF PUBLICATION
<u>REPORTS ON CROPS:</u>		
Cotton County Estimates	Annually	July
Field Crop County Estimates	Annually	March
General Crop Report	Monthly	10th of month
Citrus Report	Monthly	10th of month
Prospective Plantings	Annually	Jan., Apr., mid-month
July Acreage	Annually	July 10
Annual Crop Summary	Annually	Late January
Grain Stocks	Quarterly	24th of Jan., Apr., June and Oct.
<u>REPORTS ON VEGETABLES:</u>		
Vegetables	Periodically	Jan., Apr., May, Oct.
Vegetable Summary	Annually	Late December
<u>REPORTS ON LIVESTOCK:</u>		
January 1 Livestock Inventory	Annually	February 3
July 1 Cattle Inventory	Annually	July 26
Cattle on Feed	Monthly	15th of month
Cattle Shipments	Monthly	End of month
Slaughter	Monthly	1st of month
Wool Production	Semi-Annually	3rd of April, July 19
Lamb Crop	Semi-Annually	Jan. 28, July 19
Sheep and Lambs on Feed	Annually	January 16
Pig Crop	Annually	January 1
Milk Production	Quarterly	Jan., Apr., July, Oct. near mid-month
<u>REPORTS ON POULTRY AND HONEY:</u>		
Poultry & Egg Production	Quarterly	Mar., June, Sept., Dec., near Mid-month
Honey Production	Seasonally	September, January
<u>PRICE REPORTS:</u>		
Monthly Price	Monthly	1st of month
Farm Income	Semi-Annually	March, August
<u>OTHER REPORTS:</u>		
Weekly Weather, Crop and Livestock	Weekly	Monday, 3:00 p.m.
Agricultural Labor	Quarterly	Feb., May, Aug., Nov.
Agricultural Situation - USDA Magazine	Monthly	1st of month
<u>ANNUAL BULLETIN:</u>		
Arizona Agricultural Statistics	Annually	April

ARIZONA AGRICULTURAL STATISTICS

CASH RECEIPTS FROM MARKETINGS ^{1/} AND GOVERNMENT PAYMENTS ^{2/}: Arizona, 1972, 1973, 1974 and 1975

COMMODITY GROUP	1972	1973	1974	1975 ^{3/}
<u>1,000 Dollars</u>				
Cotton Lint	85,833	120,531	174,856	
Cottonseed	14,503	26,434	61,127	
Feed Grains	25,583	36,097	50,530	
Hay	39,518	50,314	73,072	
Wheat	17,402	34,761	44,887	
Sugarbeets	3,478	4,924	9,000	
Vegetables	103,557	107,438	112,880	
Citrus	33,274	37,828	34,348	
Grapes	7,515	5,251	8,957	
Other Misc. Crops	21,115	24,729	43,506	
Total, All Crops	351,778	448,307	613,163	607,451
Cattle & Calves	416,827	585,537	479,290	
Sheep, Lambs & Wool	6,121	9,174	8,933	
Hogs	8,811	12,107	10,075	
Dairy Products	44,880	60,564	73,662	
Poultry & Eggs	4,080	7,200	6,437	
Other Livestock & Products	3,274	4,577	4,735	
Total, Livestock & Products	483,993	679,159	583,132	618,475
Total, All Commodities	835,771	1,127,466	1,196,295	1,225,926
Government Payments	49,990	41,328	5,835	<u>4/</u>
Total Cash Receipts	885,761	1,168,794	1,202,130	<u>4/</u>

CASH RECEIPTS FROM AGRICULTURE: Cash receipts from farm marketings represent gross proceeds from sales of agricultural commodities by farmers and ranchers during a calendar year. Data by commodity for 1975 will be available in August 1976 after final estimates of prices and quantity sold by months are available. The totals shown for 1975 are preliminary estimates based primarily on production and monthly prices without current data on monthly sales.

Statistical data for most commodities published in this bulletin show "Value of Production." Value of production is derived by multiplying production by season average price. This figure in many instances is different from the "Cash Receipts" in the foregoing table. The difference occurs because cash receipts represent gross proceeds from actual sales or marketings, while value of production relates to total production including that part not sold. For instance, cotton grown one year and held for sale the following year will not be included in cash receipts for the year in which it was produced. However, the carryover value will be included as value of production for the year in which it was produced.

The preliminary estimate of cash receipts from 1975 sales of agricultural products is over \$1.2 billion. This is 2 percent more than 1974. Cash receipts from crops were 1 percent below 1974 while livestock cash receipts were up 6 percent. This is the first decrease in crop cash receipts since 1970. Livestock cash receipts accounted for 50 percent of all commodity cash receipts compared to an average of 56 percent for the previous 3 years.

^{1/} Source: Economic Research Service, U. S. Department of Agriculture.

^{2/} Source: Arizona State Office, Agricultural Stabilization and Conservation Service, U. S. Department of Agriculture.

^{3/} Preliminary totals based on preliminary production and price estimates. Individual commodity cash receipts are published after final production, disposition and price estimates are available.

^{4/} At publication time these data had not been compiled.

ARIZONA AGRICULTURAL STATISTICS

CASH RECEIPTS FROM MARKETINGS 1/ AND GOVERNMENT PAYMENTS 2/: Arizona, by counties, 1973, 1974 and 1975

County	Crops		Livestock and Livestock Products			Total Crops and Livestock			Government Payments			Total Crops, Livestock and Government Payments			
	1973	1974	1975 3/	1973	1974	1975 3/	1973	1974	1975 3/	1973	1974 4/	1975 4/	1973	1974 4/	1975 4/
Apache	2,554	6,078	1,214	14,376	8,403	15,009	16,930	14,481	16,223	133			17,063		
Cochise	27,169	41,127	44,250	18,668	11,125	22,809	45,837	52,252	67,059	2,477			48,314		
Coconino	3,772	10,726	11,088	14,069	8,076	14,845	17,841	18,802	25,933	66			17,907		
Gila	1,085	618	486	9,658	5,464	12,082	10,743	6,082	12,568	58			10,801		
Graham	11,161	20,861	18,322	21,565	15,803	28,060	32,726	36,664	46,382	1,106			33,832		
Greenlee	2,180	2,439	1,893	4,271	2,765	5,590	6,451	5,204	7,483	115			6,566		
Maricopa	163,003	223,287	237,936	230,846	209,222	204,647	393,849	432,509	442,583	14,636			408,485		
Mohave	1,618	2,594	2,398	10,242	5,766	12,071	11,860	8,360	14,469	165			12,025		
Navaajo	2,952	3,258	2,964	11,856	8,811	13,653	14,808	12,069	16,617	251			15,059		
Pima	17,458	22,016	21,369	35,874	26,008	38,165	53,332	48,024	59,534	1,805			55,137		
Pinal	82,497	109,041	105,530	219,331	199,629	168,142	301,828	308,670	273,672	14,687			316,515		
Santa Cruz	473	1,022	490	6,466	3,524	7,272	6,939	4,546	7,762	1			6,940		
Yavapai	1,160	1,306	939	19,120	11,211	22,080	20,280	12,517	23,019	15			20,295		
Yuma	131,225	168,790	158,572	62,817	67,325	54,050	194,042	236,115	212,622	5,813			199,855		
TOTAL	448,307	613,163	607,451	679,159	583,132	618,475	1,127,466	1,196,295	1,225,926	41,328	5,835		1,168,794		1,202,130

Thousand Dollars

1/ Source: U. S. Department of Agriculture, Economic Research Service. Preliminary estimates of cash receipts by States are published in March. The only breakdown published at that time is as shown in headings of this table. As more complete check data become available, the March estimates will be adjusted, where necessary, and reflected in an August release. County estimates shown above are based on preliminary production and marketing which are also subject to revision as more complete data become available.

2/ Source: Arizona State Office, Agricultural Stabilization and Conservation Service.

3/ Preliminary.

4/ Government payments not available for 1975. County payments not available for 1974.

Agricultural Summary - 1975

Wesley Britton, Agricultural Statistician

WEATHER: The first three months of 1975 were generally cool with scattered light precipitation. Late March saw unprecedented low temperatures with record lows in some areas and frost in the Salt River Valley. By May, most weather stations reported accumulated moisture for the year at below normal levels. June was generally cool and windy in many areas. Fairly good rains were received during July, bringing year-to-date totals back to normal in most areas and above normal in mountain areas. August and early September were mostly hot and dry. Cooler temperatures and scattered light showers returned by the end of September and continued into October. Late October and early November saw normal temperatures and dry conditions. The second half of November was cool and scattered showers were recorded but by the end of the month temperatures were quite cold and the Salt River Valley areas recorded freezing temperatures. December was mostly cool with light, scattered showers. Precipitation totals for the year were well below normal at most reporting stations, but a few mountain stations were slightly above normal.

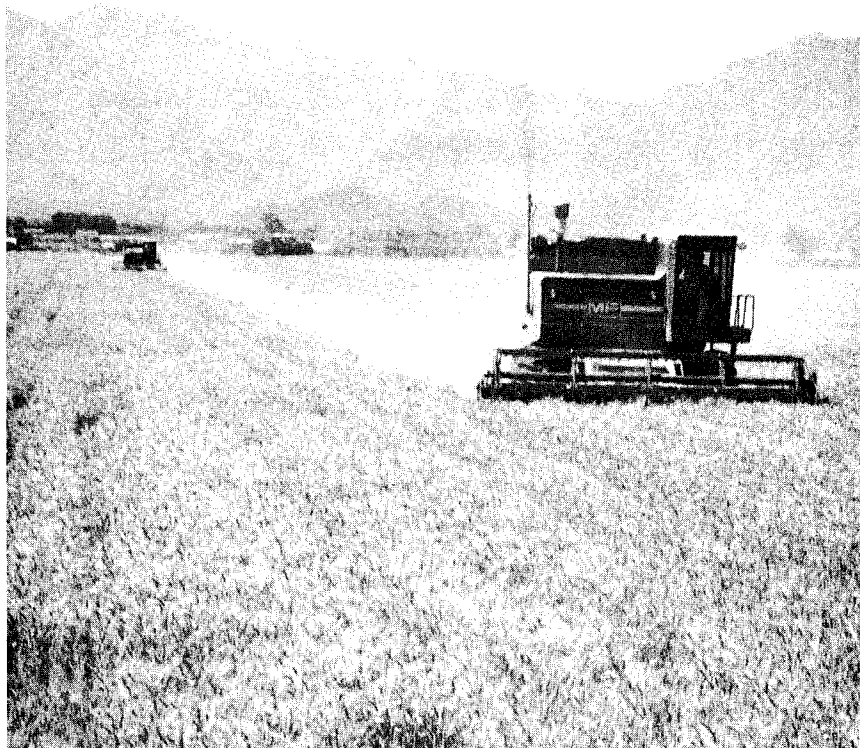
CROPS: Estimated cash receipts from Arizona crop sales in 1975, at \$607.5 million, were 1 percent below the 1974 level. This was the first decrease in crop cash receipts in several years, and was caused by a combination of lower prices for some crops and smaller crops in some cases. For example, sorghum grain production was down 6 percent from 1974, and the producer price was 40-50 cents per bushel below the 1974 level. The size of the 1975 cotton crop was drastically short of the 1974 notch. Cotton lint contributed \$185.2 million toward the State's crop cash receipts. This led all other crops with 30 percent of the total. Vegetables followed with 18 percent of the crop total. Other leading crops were hay, wheat and sorghum grain with 13 percent, 11 percent and 6 percent, respectively. These crops accounted for 78 percent of all crop cash receipts.

LIVESTOCK: Cash receipts from the sale of livestock and livestock products increased in 1975 to \$618.5 million -- 6 percent above 1974's receipts. Beef cattle average prices were generally higher than 1974 during the last half of 1975. Hog prices were above 1974 almost all year, often \$20.00 per cwt. or more above the 1974 level. Lamb prices were also above the 1974 level most of the year as were egg prices. Prices received for milk were above the 1974 level during the last half of 1975.

Things weren't all that rosy for livestock producers however. For instance alfalfa hay prices were generally well above 1974 levels. Furthermore range conditions were often such that supplemental feeding and water-hauling were required. As a result of higher feed and feeder calf prices and lower prices for meat animals early in the year feedlot cattle numbers were drastically below 1974 levels. Later in the year this trend was reversed and the December 1 number of feedlot cattle and calves was 501,000 head -- well above the 334,000 head a year earlier.

Field Crops

James E. Oaks, Agricultural Statistician
Raul Guajardo, Agricultural Statistician



ARIZONA AGRICULTURAL STATISTICS

ALL COTTON: Acreage, yield, and production, Arizona, by counties, 1968-75 1/

COUNTY	1968				1969			
	Planted	Harvested	Yield Per Acre	Production	Planted	Harvested	Yield Per Acre	Production
	Acres		Lbs.	Bales	Acres		Lbs.	Bales
Apache								
Cochise	13,430	13,100	749	20,455	14,100	13,900	883	25,577
Coconino								
Gila	*				*			
Graham	16,500	16,300	657	22,300	17,400	17,300	726	26,169
Greenlee	1,460	1,390	472	1,367	1,340	1,310	724	1,976
Maricopa	113,400	113,300	1,265	298,493	116,900	116,650	970	235,664
Mohave	335	335	914	638	268	248	1,152	595
Navajo								
Pima	18,900	18,800	886	34,702	17,400	17,300	862	31,056
Pinal	101,800	101,600	1,185	250,735	107,200	107,000	977	217,789
Santa Cruz	121	121	536	135	129	129	290	78
Yavapai	*				*			
Yuma	33,000	33,000	1,506	103,505	36,200	36,100	1,239	93,216
ARIZONA	299,000	298,000	1,180	732,400	311,000	310,000	979	632,200
	1970				1971			
Apache								
Cochise	15,438	14,828	655	20,288	20,206	20,116	534	22,418
Coconino								
Gila	*				*			
Graham	15,400	15,150	523	16,490	16,640	16,610	590	20,380
Greenlee	1,435	1,387	528	1,520	1,310	1,260	566	1,486
Maricopa	99,500	98,900	863	177,760	99,170	98,840	925	190,560
Mohave	246	246	1,188	610	560	560	576	670
Navajo								
Pima	16,200	15,950	711	23,660	15,040	14,980	717	22,440
Pinal	95,600	95,300	932	184,930	101,300	100,960	866	182,240
Santa Cruz	*				*			
Yavapai	*				*			
Yuma	32,200	31,960	970	64,650	32,200	32,000	1,018	67,850
ARIZONA	276,100	273,800	859	489,900	286,500	285,400	854	508,100
	1972				1973			
Apache								
Cochise	21,180	20,950	591	25,780	19,050	19,050	499	19,780
Coconino								
Gila	*				*			
Graham	16,850	14,310	480	14,320	11,200	11,200	464	10,830
Greenlee	1,230	1,000	638	1,330	900	900	328	610
Maricopa	110,300	110,000	1,093	250,720	106,600	106,600	1,092	242,400
Mohave	830	830	1,116	1,930	700	700	1,053	1,530
Navajo								
Pima	16,150	16,150	825	27,760	16,400	16,400	1,002	34,250
Pinal	110,300	110,200	1,019	234,130	115,300	115,300	1,058	254,150
Santa Cruz	*				*			
Yavapai	*				*			
Yuma	37,400	37,400	1,228	95,750	39,850	39,850	1,081	89,750
ARIZONA	314,300	310,900	1,006	651,800	310,000	310,000	1,012	653,300

ARIZONA AGRICULTURAL STATISTICS

ALL COTTON: Acreage, yield, and production, Arizona, by counties, 1968-75 1/ (cont'd)

COUNTY	1974				1975			
	Planted	Harvested	Yield Per Acre	Production	Planted	Harvested	Yield Per Acre	Production
	Acres		Lbs.	Bales	Acres		Lbs.	Bales
Apache								
Cochise	23,400	23,400	693	33,760	13,550	13,550	553	15,600
Coconino								
Gila	*				*			
Graham	14,900	14,900	761	23,610	9,250	9,250	580	11,170
Greenlee	900	900	640	1,200	*			
Maricopa	159,750	159,750	1,316	437,900	117,600	117,600	1,151	282,000
Mohave	950	950	1,137	2,250	1,050	1,050	987	2,160
Navajo								
Pima	22,200	22,200	938	43,400	14,150	14,150	882	26,000
Pinal	145,150	145,150	1,113	336,540	107,650	107,650	767	172,000
Santa Cruz	*				*			
Yavapai	*				*			
Yuma	58,800	58,800	1,369	167,690	34,500	34,500	1,230	88,400
ARIZONA	426,700	426,700	1,179	1,047,700	298,000	298,000	962	597,500

ALL COTTON: Acreage, yield, production, and value, Arizona, 1968-75 1/

Year	Planted	Harvested	Yield Per Harvested Acre	Lint	
				Production	Value
	1,000 Acres		Lbs.	1,000 Bales	1,000 Dol.
1968	299.0	298.0	1,180	732.4	86,276
1969	311.0	310.0	979	632.2	70,886
1970	276.1	273.8	859	489.9	58,316
1971	286.5	285.4	854	508.1	75,838
1972	314.3	310.9	1,006	651.8	94,409
1973	310.0	310.0	1,012	653.3	146,691
1974	426.7	426.7	1,179	1,047.7	226,459
1975 2/	298.0	298.0	962	597.5	151,896

ALL COTTONSEED: Production, season average price, and value, Arizona, 1968-75

Year	Cottonseed			Combined Value of Lint & Seed
	Production	Price/Ton	Value	
	1,000 Tons	Dollars	1,000 Dol.	1,000 Dol.
1968	307.0	52.50	16,118	102,394
1969	253.0	39.80	10,069	80,955
1970	200.0	60.00	12,000	70,316
1971	221.0	60.00	13,260	89,098
1972	278.0	50.20	13,956	108,365
1973	290.0	108.00	31,320	178,011
1974	439.0	147.00	64,533	290,992
1975 2/	257.5	102.00	26,265	178,161

1/ 1975 county estimates are unofficial preliminary estimates. Official estimates will be published in July. Production estimates are for 480-lb. net weight bales.

2/ Preliminary.

*Acres planted and/or harvested too small to warrant quantitative estimate or not published to avoid disclosing individual operations. Acres and production, if any, are included in State totals.

ARIZONA AGRICULTURAL STATISTICS

COTTON, UPLAND: Acreage, yield, and production, Arizona, by counties, 1968-75 1/

COUNTY	1968				1969			
	Planted	Harvested	Yield Per Acre	Production	Planted	Harvested	Yield Per Acre	Production
	Acres		Lbs.	Bales	Acres		Lbs.	Bales
Apache								
Cochise	13,250	12,950	753	20,315	13,772	13,572	882	24,939
Coconino								
Gila	*				*			
Graham	8,070	7,930	764	12,622	8,080	8,030	793	13,266
Greenlee	1,460	1,390	472	1,367	1,340	1,310	724	1,976
Maricopa	101,540	101,490	1,319	278,900	103,720	103,540	1,042	224,684
Mohave	335	335	914	638	268	248	1,152	595
Navajo								
Pima	16,490	16,410	908	31,042	15,080	15,000	903	28,219
Pinal	95,490	95,330	1,210	240,311	99,790	99,640	1,011	209,846
Santa Cruz	121	121	536	135	129	129	290	78
Yavapai	*				*			
Yuma	32,700	32,700	1,512	103,005	35,170	35,080	1,251	91,427
ARIZONA	269,500	268,700	1,230	688,400	277,400	276,600	1,033	595,100
	1970				1971			
Apache								
Cochise	13,750	13,150	683	18,700	16,670	16,590	543	18,800
Coconino								
Gila	*				*			
Graham	7,000	6,850	654	9,320	5,600	5,580	759	8,800
Greenlee	1,435	1,387	528	1,520	1,310	1,260	566	1,486
Maricopa	87,700	87,200	927	168,300	86,000	85,700	1,004	179,300
Mohave	246	246	1,188	610	560	560	576	670
Navajo								
Pima	13,900	13,700	777	22,200	12,000	11,950	776	19,400
Pinal	88,800	88,500	977	180,100	91,400	91,100	919	174,500
Santa Cruz	*				*			
Yavapai	*				*			
Yuma	30,100	29,900	984	61,300	28,400	28,200	1,072	63,000
ARIZONA	243,000	241,000	920	462,100	242,000	241,000	928	466,000
	1972				1973			
Apache								
Cochise	15,830	15,600	631	20,500	15,900	15,900	502	16,630
Coconino								
Gila	*				*			
Graham	5,700	4,560	621	5,900	4,200	4,200	647	5,660
Greenlee	1,230	1,000	638	1,330	900	900	328	610
Maricopa	101,500	101,200	1,128	238,100	99,100	99,100	1,122	231,550
Mohave	830	830	1,116	1,930	700	700	1,053	1,530
Navajo								
Pima	12,700	12,700	903	23,900	13,700	13,700	1,082	30,870
Pinal	101,600	101,500	1,052	222,700	105,600	105,600	1,095	240,850
Santa Cruz	*				*			
Yavapai	*				*			
Yuma	33,550	33,550	1,266	88,560	35,900	35,900	1,114	83,300
ARIZONA	273,000	271,000	1,067	603,000	276,000	276,000	1,063	611,000

COTTON, UPLAND: Acreage, yield, and production, Arizona, by counties, 1968-75 1/ (cont'd)

COUNTY	1974				1975			
	Planted	Harvested	Yield Per Acre	Production	Planted	Harvested	Yield Per Acre	Production
	Acres		Lbs.	Bales	Acres		Lbs.	Bales
Apache								
Cochise	20,850	20,850	699	30,350	10,750	10,750	561	12,560
Coconino								
Gila	*				*			
Graham	6,750	6,750	875	12,300	3,450	3,450	644	4,630
Greenlee	900	900	640	1,200	*			
Maricopa	151,650	151,650	1,348	425,900	112,300	112,300	1,178	275,620
Mohave	950	950	1,137	2,250	1,050	1,050	987	2,160
Navajo								
Pima	19,750	19,750	964	39,650	11,500	11,500	947	22,700
Pinal	136,150	136,150	1,138	322,800	99,200	99,200	782	161,520
Santa Cruz	*				*			
Yavapai	*				*			
Yuma	54,350	54,350	1,406	159,200	29,500	29,500	1,312	80,640
ARIZONA	392,000	392,000	1,218	995,000	268,000	268,000	1,003	560,000

COTTON, UPLAND: Acreage, yield, production, and value, Arizona, 1968-75 1/

Year	Planted	Harvested	Yield Per Harvested Acre	Lint		
				Production	Price Per Lb.	Value
	1,000 Acres		Lbs.	1,000 Bales	Cents	1,000 Dol.
1968	269.5	268.7	1,230	688.4	23.53	77,762
1969	277.4	276.6	1,033	595.1	22.31	63,713
1970	243.0	241.0	920	462.1	23.64	52,448
1971	242.0	241.0	928	466.0	29.95	66,955-
1972	273.0	271.0	1,067	603.0	29.30	84,738-
1973	276.0	276.0	1,063	611.0	43.30	126,999-
1974	392.0	392.0	1,218	995.0	44.10	210,622
1975 2/	268.0	268.0	1,003	560.0	51.50	138,432

COTTON, UPLAND: Monthly and season average prices received by growers, Arizona, 1968-75

Year	Jan.	Feb.	Mar.	Apr.	May	June	July	Aug.	Sept.	Oct.	Nov.	Dec.	Season Average
Cents per pound													
1968	23.9	20.0	21.5	22.5	23.0	22.5	23.0	-	-	27.0	24.5	23.5	22.54
1969	19.0	19.0	20.5	20.0	23.0	23.0	23.0	-	-	22.4	22.1	21.0	22.37
1970	19.0	19.0	20.5	22.0	23.0	22.0	21.0	-	23.0	23.3	22.8	22.0	23.64
1971	22.0	22.0	22.5	24.0	24.0	25.0	24.0	-	28.0	29.0	29.0	30.5	29.95
1972	31.0	28.5	28.5	30.5	31.0	31.0	30.0	30.0	29.0	29.0	29.0	29.0	29.30
1973	28.5	27.0	27.0	28.0	30.0	30.0	35.0	45.0	45.0	39.0	37.0	44.0	43.30
1974	48.0	49.0	50.0	55.0	50.0	50.0	50.0	49.0	58.0	58.0	52.0	43.0	44.10
1975 2/	38.5	35.0	33.0	38.4	38.4	41.5	41.5	44.0	47.5	49.3	50.3	52.2	51.50

1/ 1975 county estimates are unofficial preliminary estimates. Official estimates will be published in July. Production estimates are for 480-lb. net weight bales.

2/ Preliminary.

*Acres planted and/or harvested too small to warrant quantitative estimate or not published to avoid disclosing individual operations. Acres and production, if any, are included in State totals.

ARIZONA AGRICULTURAL STATISTICS

COTTON AMERICAN PIMA: Acreage, yield, and production, Arizona, by counties, 1968-75 1/

COUNTY	1968				1969			
	Planted	Harvested	Yield Per Acre	Production	Planted	Harvested	Yield Per Acre	Production
	Acres		Lbs.	Bales	Acres		Lbs.	Bales
Apache								
Cochise	180	150	448	140	328	328	934	638
Coconino								
Gila	*				*			
Graham	8,430	8,370	555	9,678	9,320	9,270	668	12,903
Greenlee								
Maricopa	11,860	11,810	796	19,593	13,180	13,110	402	10,980
Mohave								
Navajo								
Pima	2,410	2,390	735	3,660	2,320	2,300	592	2,837
Pinal	6,310	6,270	798	10,424	7,410	7,360	518	7,943
Santa Cruz								
Yavapai								
Yuma	300	300	800	500	1,030	1,020	842	1,789
ARIZONA	29,500	29,300	721	44,000	33,600	33,400	533	37,100
	1970				1971			
Apache								
Cochise	1,688	1,678	437	1,528	3,536	3,526	493	3,618
Coconino								
Gila	*				*			
Graham	8,400	8,300	414	7,170	11,040	11,030	505	11,580
Greenlee								
Maricopa	11,800	11,700	388	9,460	13,170	13,140	412	11,260
Mohave								
Navajo								
Pima	2,300	2,250	311	1,460	3,040	3,030	482	3,040
Pinal	6,800	6,800	341	4,830	9,900	9,860	377	7,740
Santa Cruz								
Yavapai								
Yuma	2,100	2,060	780	3,350	3,800	3,800	614	4,850
ARIZONA	33,100	32,800	407	27,800	44,500	44,400	456	42,100
	1972				1973			
Apache								
Cochise	5,350	5,350	474	5,280	3,150	3,150	480	3,150
Coconino								
Gila	*							
Graham	11,150	9,750	414	8,420	7,000	7,000	354	5,170
Greenlee								
Maricopa	8,800	8,800	688	12,620	7,500	7,500	695	10,850
Mohave								
Navajo								
Pima	3,450	3,450	537	3,860	2,700	2,700	600	3,380
Pinal	8,700	8,700	630	11,430	9,700	9,700	658	13,300
Santa Cruz								
Yavapai								
Yuma	3,850	3,850	897	7,190	3,950	3,950	784	6,450
ARIZONA	41,300	39,900	587	48,800	34,000	34,000	597	42,300

COTTON, AMERICAN PIMA: Acreage, yield, and production, Arizona, by counties, 1968-75 1/ (cont'd)

COUNTY	1974				1975			
	Planted	Harvested	Yield Per Acre	Production	Planted	Harvested	Yield Per Acre	Production
	<u>Acres</u>		<u>Lbs.</u>	<u>Bales</u>	<u>Acres</u>		<u>Lbs.</u>	<u>Bales</u>
Apache								
Cochise	2,550	2,550	642	3,410	2,800	2,800	521	3,040
Coconino								
Gila	*				*			
Graham	8,150	8,150	666	11,310	5,800	5,800	541	6,540
Greenlee								
Maricopa	8,100	8,100	711	12,000	5,300	5,300	578	6,380
Mohave	*				*			
Navajo								
Pima	2,450	2,450	735	3,750	2,650	2,650	598	3,300
Pinal	9,000	9,000	733	13,740	8,450	8,450	595	10,480
Santa Cruz	*				*			
Yavapai	*				*			
Yuma	4,450	4,450	916	8,490	5,000	5,000	745	7,760
ARIZONA	34,700	34,700	729	52,700	30,000	30,000	600	37,500

1/ 1975 county estimates are unofficial preliminary estimates. Official estimates will be published in July. Production estimates are for 480-lb. net weight bales.

*Acres planted and/or harvested too small to warrant quantitative estimate or not published to avoid disclosing individual operations. Acres and production, if any, are included in State totals.

COTTON, AMERICAN PIMA: Acreage, yield, production, and value, Arizona, 1968-75 1/

Year	Planted	Harvested	Yield Per Harvested Acre	Lint		
				Production	Price Per Lb.	Value
	<u>1,000 Acres</u>		<u>Lbs.</u>	<u>1,000 Bales</u>	<u>Cents</u>	<u>1,000 Dol.</u>
1968	29.5	29.3	721	44.0	40.3	8,514
1969	33.6	33.4	533	37.1	40.3	7,173
1970	33.1	32.8	407	27.8	44.0	5,868
1971	44.5	44.4	456	42.1	43.9	8,883
1972	41.3	39.9	587	48.8	41.3	9,671
1973	34.0	34.0	597	42.3	97.0	19,692
1974	34.7	34.7	729	52.7	62.6	15,837
1975 <u>2/</u>	30.0	30.0	600	37.5	74.8	13,464

1/ 1975 county estimates are unofficial preliminary estimates. Official estimates will be published in July. Production estimates are for 480-lb. net weight bales.

2/ Preliminary.

ARIZONA AGRICULTURAL STATISTICS

BARLEY: Acreage, yield, and production, Arizona, by counties, 1968-75

COUNTY	1968				1969			
	Planted For All Purposes	FOR GRAIN			Planted For All Purposes	FOR GRAIN		
		Harvested	Yield Per Acre	Production		Harvested	Yield Per Acre	Production
	Acres	Lbs. 1/	Tons 1/		Acres	Lbs. 1/	Tons 1/	
Apache	300	*			300	*		
Cochise	5,700	5,100	2,970	7,580	6,500	5,000	3,550	8,880
Coconino	500	300	3,840	580	400	200	3,840	380
Gila	*				*			
Graham	13,000	8,600	3,890	16,730	11,300	9,000	3,840	17,280
Greenlee	1,000	300	2,880	430	750	150	2,880	220
Maricopa	92,000	84,000	3,500	147,170	72,000	64,000	3,500	112,100
Mohave	800	200	3,360	340	2,500	2,000	3,360	3,360
Navajo	500	*			400	*		
Pima	10,000	9,000	3,840	17,280	11,000	10,000	2,880	14,400
Pinal	47,800	43,000	3,370	72,500	45,000	40,000	3,360	67,200
Santa Cruz	300	200	3,120	310	300	200	2,880	290
Yavapai	600	300	2,880	430	500	400	2,980	600
Yuma	27,500	25,000	3,600	45,000	15,000	13,000	3,170	20,590
ARIZONA	200,000	176,000	3,500	308,350	166,000	144,000	3,410	245,380
	1970				1971			
Apache	200	*			*			
Cochise	6,600	5,600	4,080	11,420	7,100	7,000	3,740	13,100
Coconino	300	200	3,360	340	100	*		
Gila	*				100	*		
Graham	11,500	9,500	4,180	19,840	8,000	6,800	3,980	13,550
Greenlee	400	300	3,360	500	100	100	3,170	160
Maricopa	77,000	67,000	3,550	118,990	64,000	54,000	3,600	97,200
Mohave	1,000	500	3,120	780	200	100	2,540	130
Navajo	500	*			500	300	2,740	410
Pima	11,500	10,500	3,460	18,140	10,000	9,000	3,790	17,060
Pinal	43,000	37,000	3,700	68,380	42,000	36,000	3,360	60,480
Santa Cruz	600	500	3,260	820	500	500	3,170	790
Yavapai	400	200	2,830	280	400	200	3,020	300
Yuma	10,000	8,700	3,650	15,870	6,000	5,000	3,260	8,160
ARIZONA	163,000	140,000	3,650	255,360	139,000	119,000	3,550	211,340
	1972				1973			
Apache	*				*			
Cochise	7,000	6,500	3,460	11,230	7,400	6,000	3,120	9,360
Coconino	100	*			*			
Gila	100	*			*			
Graham	5,000	3,000	3,890	5,830	12,000	7,000	3,700	12,940
Greenlee	200	100	3,360	170	*			
Maricopa	60,000	45,000	3,600	81,000	60,000	52,000	3,890	101,090
Mohave	200	200	2,540	250	*			
Navajo	300	100	2,830	140	*			
Pima	9,300	8,500	3,310	14,080	8,500	8,200	3,510	14,390
Pinal	42,000	36,000	3,260	58,760	47,000	40,000	3,310	66,240
Santa Cruz	600	100	2,880	140	600	*		
Yavapai	200	*			*			
Yuma	12,000	9,500	2,980	14,140	8,500	6,500	3,550	11,540
ARIZONA	137,000	109,000	3,410	185,740	145,000	120,000	3,600	216,000

BARLEY: Acreage, yield and production, Arizona, by counties 1968-75 (cont'd)

COUNTY	1974				1975			
	Planted For All Purposes	FOR GRAIN			Planted For All Purposes	FOR GRAIN		
		Harvested	Yield Per Acre	Production		Harvested	Yield Per Acre	Production
	Acres	Lbs. <u>1/</u>	Tons <u>1/</u>		Acres	Lbs. <u>1/</u>	Tons <u>1/</u>	
Apache	*				*			
Cochise	6,700	6,000	2,880	8,640	6,800	6,200	3,120	9,670
Coconino	*				*			
Gila	*				*			
Graham	12,000	7,500	3,790	14,220	15,000	13,600	3,550	24,150
Greenlee	*				400	*		
Maricopa	50,000	43,200	3,740	80,870	56,000	50,000	3,700	92,400
Mohave	*				*			
Navajo	*				*			
Pima	6,000	5,500	3,790	10,430	7,800	7,400	3,500	12,960
Pinal	38,000	33,000	2,880	47,520	36,000	32,000	3,600	57,600
Santa Cruz	600	400	2,930	590	700	500	2,930	730
Yavapai	*				*			
Yuma	5,500	4,000	3,790	7,580	6,000	4,500	3,700	8,320
ARIZONA	120,000	100,000	3,410	170,400	130,000	115,000	3,600	207,000

1/ Converted from 48-pound bushels and rounded.

*Acres planted and/or harvested too small to warrant quantitative estimate. Acres and production, if any, are included in State totals.

BARLEY: Acreage, yield, production, price, and value, Arizona 1968-75

Year	Planted For All Purposes	FOR GRAIN				
		Harvested	Yield Per Harvested Acre	Production	Season Average Price	Value of Production
	<u>1,000 Acres</u>		<u>Lbs. <u>1/</u></u>	<u>Tons <u>1/</u></u>	<u>Dol./Ton <u>1/</u></u>	<u>1,000 Dol.</u>
1968	200	176	3,500	308,350	45.80	14,133
1969	166	144	3,410	245,380	51.20	12,576
1970	163	140	3,650	255,360	50.40	12,874
1971	139	119	3,550	211,340	56.20	11,888
1972	137	109	3,410	185,740	55.00	10,215
1973	145	120	3,600	216,000	80.40	17,370
1974	120	100	3,410	170,400	107.50	18,318
1975	130	115	3,600	207,000	110.40	22,856

1/ Converted from 48-pound bushels and rounded.

BARLEY: Monthly and season average prices received by growers, Arizona, 1968-75

Year	Jan.	Feb.	Mar.	Apr.	May	June	July	Aug.	Sept.	Oct.	Nov.	Dec.	Season Average
Dollars per ton													
1968	50.00	49.60	50.00	50.00	45.40	45.00	45.80	45.80	48.00	48.00	48.00	50.00	45.80
1969	52.00	52.00	52.00	54.20	52.00	50.00	50.00	50.00	52.00	52.00	53.00	52.00	51.20
1970	53.80	53.40	53.40	50.00	50.00	48.80	49.20	48.80	52.00	55.00	56.60	56.60	50.40
1971	55.80	58.40	55.80	58.00	56.20	55.80	54.20	54.20	54.20	56.20	58.40	60.40	56.20
1972	62.60	60.40	60.40	60.40	54.20	54.20	54.20	56.20	58.40	58.40	60.40	64.60	55.00
1973	73.00	66.60	68.80	70.80	73.00	77.00	79.20	98.00	104.20	104.20	104.20	106.20	80.40
1974	110.00	116.60	118.80	118.80	108.40	104.20	104.20	113.00	124.20	127.00	127.00	127.00	107.50
1975	123.00	120.00	120.00	119.20	116.60	104.20	108.40	112.60	112.60	118.80	113.80	118.80	110.40

ARIZONA AGRICULTURAL STATISTICS

WHEAT: Acreage, yield and production, Arizona, by counties, 1968-75

COUNTY	1968				1969			
	Planted For All Purposes	FOR GRAIN			Planted For All Purposes	FOR GRAIN		
		Harvested	Yield Per Acre	Production		Harvested	Yield Per Acre	Production
Apache	100	*			200	*		
Cochise	13,100	12,000	3,360	20,160	12,000	11,200	3,900	21,840
Coconino	300	250	910	110	300	*		
Gila	*				*			
Graham	150	100	3,060	150	100	*		
Greenlee	100	*			100	*		
Maricopa	12,500	11,700	3,240	18,960	24,500	22,000	3,960	43,560
Mohave	*				200	*		
Navajo	1,000	500	1,020	260	800	500	1,020	260
Pima	650	620	2,760	860	1,000	950	3,600	1,710
Pinal	13,800	12,400	2,820	17,490	13,800	12,000	3,310	19,870
Santa Cruz	*				400	400	3,300	660
Yavapai	600	500	900	220	600	550	960	260
Yuma	14,700	13,800	3,300	22,770	27,000	25,000	3,780	47,250
ARIZONA	57,000	52,000	3,120	81,120	81,000	73,000	3,720	135,780
	1970				1971			
Apache	300	*			300	*		
Cochise	22,800	21,000	4,200	44,100	28,500	27,000	3,840	51,840
Coconino	200	*			200	*		
Gila	*				*			
Graham	1,000	900	3,960	1,780	2,000	1,500	3,660	2,750
Greenlee	200	200	3,600	360	400	300	3,420	510
Maricopa	51,700	46,400	4,080	94,660	56,500	52,000	4,200	109,200
Mohave	500	400	3,600	720	1,000	1,000	3,000	1,500
Navajo	1,000	600	1,320	400	400	*		
Pima	2,700	2,500	4,080	5,100	6,000	6,000	4,020	12,060
Pinal	37,100	32,900	4,080	67,120	44,500	40,000	3,900	78,000
Santa Cruz	800	700	3,600	1,260	300	*		
Yavapai	500	400	1,380	270	500	*		
Yuma	47,200	43,800	4,320	94,610	48,400	44,700	4,320	96,550
ARIZONA	166,000	150,000	4,140	310,500	189,000	173,000	4,080	352,920
	1972				1973			
Apache	300	*			*			
Cochise	29,000	26,500	3,720	49,290	40,500	35,000	3,900	68,250
Coconino	200	*			*			
Gila	*				*			
Graham	600	500	3,960	990	3,000	2,500	4,200	5,250
Greenlee	200	200	4,140	410	500	500	3,480	870
Maricopa	69,000	58,000	4,200	121,800	84,000	78,000	4,320	168,480
Mohave	500	500	2,160	540	500	500	2,220	555
Navajo	400	400	3,000	600	800	400	2,700	540
Pima	7,000	6,700	3,840	12,870	7,500	7,000	3,600	12,600
Pinal	41,000	37,000	3,900	72,150	43,000	38,000	4,140	78,660
Santa Cruz	200	*			*			
Yavapai	600	*			600	*		
Yuma	40,000	40,000	4,140	82,800	55,000	54,000	4,380	118,260
ARIZONA	189,000	170,000	4,020	341,700	236,000	216,000	4,200	453,600

WHEAT: Acreage, yield and production, Arizona, by counties, 1968-75 (cont'd)

COUNTY	1974				1975			
	Planted For All Purposes	FOR GRAIN			Planted For All Purposes	FOR GRAIN		
		Harvested	Yield Per Acre	Production		Harvested	Yield Per Acre	Production
	Acres	Lbs. 1/	Tons 1/		Acres	Lbs. 1/	Tons 1/	
Apache	400	*			*			
Cochise	46,300	40,000	3,720	74,400	51,500	51,300	4,020	103,110
Coconino	*				*			
Gila	*				*			
Graham	3,500	3,400	3,900	6,630	7,500	7,400	4,150	15,330
Greenlee	900	800	3,530	1,410	1,500	1,400	3,900	2,730
Maricopa	74,000	71,000	4,200	149,100	90,000	89,000	4,380	194,910
Mohave	300	300	2,220	330	*			
Navajo	800	400	2,640	530	600	600	3,100	930
Pima	9,100	9,000	3,660	16,470	12,500	12,400	3,960	24,540
Pinal	56,000	54,000	3,780	102,060	75,000	73,400	4,250	155,880
Santa Cruz	*				*			
Yavapai	500	*			600	500	3,000	750
Yuma	58,000	56,000	4,080	114,240	85,000	83,300	4,380	182,430
ARIZONA	250,000	235,000	3,960	465,300	325,000	320,000	4,260	681,600

1/ Converted from 60-pound bushels and rounded.

*Acres planted and/or harvested too small to warrant quantitative estimate. Acres and production, if any, are included in State totals.

WHEAT: Acreage, yield, production, price, and value, Arizona, 1968-75

Year	Planted For All Purposes	FOR GRAIN					Value of Production
		Harvested	Yield Per Harvested Acre	Production	Season Average Price		
	1,000 Acres		Lbs. 1/	Tons 1/	Dol./Ton 1/	1,000 Dol.	
1968	57	52	3,120	81,120	44.00	3,569	
1969	81	73	3,720	135,780	49.30	6,698	
1970	166	150	4,140	310,500	47.00	14,594	
1971	189	173	4,080	352,920	57.00	20,116	
1972	189	170	4,020	341,700	54.70	18,680	
1973	236	216	4,200	453,600	86.70	39,312	
1974	250	235	3,960	465,300	104.60	48,701	
1975	325	320	4,260	681,600	105.00	71,568	

1/ Converted from 60-pound bushels and rounded.

WHEAT: Monthly and season average prices received by growers, Arizona, 1968-75

Year	Jan.	Feb.	Mar.	Apr.	May	June	July	Aug.	Sept.	Oct.	Nov.	Dec.	Season Average
Dollars per ton													
1968	46.60	46.60	46.60	45.00	45.00	43.60	43.00	43.40	45.00	46.60	46.60	46.60	44.00
1969	46.60	46.60	46.60	46.00	48.40	49.40	49.40	49.40	50.60	51.00	53.00	53.00	49.30
1970	53.00	52.60	50.60	49.40	45.60	46.00	46.40	47.40	49.60	51.60	53.40	56.60	47.00
1971	60.00	60.00	58.40	60.00	60.00	56.60	56.60	56.60	56.60	58.40	60.00	60.00	57.00
1972	60.00	58.40	60.00	58.40	53.40	53.40	53.40	55.00	56.60	56.60	63.40	70.00	54.70
1973	76.60	73.40	71.60	70.00	73.40	80.00	80.00	125.00	130.00	125.00	126.60	133.40	86.70
1974	142.00	143.40	143.40	126.60	113.40	100.00	104.00	105.00	115.40	123.60	130.00	133.40	104.60
1975	125.00	115.00	111.40	112.00	107.60	101.60	104.60	115.00	126.60	120.60	113.40	107.40	105.00

ARIZONA AGRICULTURAL STATISTICS

CORN: Acreage, yield and production, Arizona, by counties, 1968-75

COUNTY	1968				1969			
	Planted For All Purposes	FOR GRAIN			Planted For All Purposes	FOR GRAIN		
		Harvested	Yield Per Acre	Production		Harvested	Yield Per Acre	Production
	Acres	Lbs. 1/	Tons 1/		Acres	Lbs. 1/	Tons 1/	
Apache	3,000	2,700	830	1,130	5,600	5,200	730	1,890
Cochise	3,600	2,800	4,480	6,270	4,000	4,000	3,080	6,160
Coconino	1,600	1,500	730	550	4,000	3,600	620	1,110
Gila	200	150	1,120	80	100	100	1,180	60
Graham	200	100	2,800	140	200	100	2,800	140
Greenlee	300	150	3,920	290	300	200	3,300	330
Maricopa	5,800	100	4,480	220	6,000	*		
Mohave	*				*			
Navajo	11,400	8,850	1,190	5,250	7,700	5,200	780	2,040
Pima	600	*			700	100	3,580	180
Pinal	300	200	3,920	390	900	400	3,920	780
Santa Cruz	200	*			200	*		
Yavapai	1,600	400	3,920	780	1,550	400	3,420	680
Yuma	150	50	5,040	130	700	700	4,980	1,740
ARIZONA	29,000	17,000	1,790	15,230	32,000	20,000	1,510	15,120
		1970			1971			
Apache	4,450	3,750	780	1,470	5,200	4,150	950	1,980
Cochise	1,200	1,000	3,190	1,600	900	800	4,260	1,700
Coconino	4,050	3,250	560	910	4,300	3,700	730	1,350
Gila	200	100	1,120	50	200	100	1,510	80
Graham	500	400	3,250	650	1,100	600	4,480	1,340
Greenlee	100	*			200	100	3,640	180
Maricopa	7,200	*			7,000	*		
Mohave	*				100	*		
Navajo	9,500	4,600	670	1,550	5,600	4,000	1,230	2,470
Pima	500	*			300	*		
Pinal	600	100	3,920	200	350	100	4,030	200
Santa Cruz	*				100	*		
Yavapai	550	100	3,640	180	250	150	4,420	330
Yuma	2,100	1,700	4,090	3,470	2,400	2,200	4,140	4,560
ARIZONA	31,000	15,000	1,340	10,080	28,000	16,000	1,790	14,340
		1972			1973			
Apache	3,500	3,000	840	1,260	3,000	2,500	1,060	1,330
Cochise	500	200	4,540	450	350	*		
Coconino	4,000	3,600	670	1,210	3,000	2,300	1,400	1,610
Gila	*				*			
Graham	500	100	3,360	170	375	*		
Greenlee	150	*			*			
Maricopa	7,700	4,000	3,700	7,390	7,000	500	3,420	850
Mohave	100	*			*			
Navajo	6,500	2,500	1,120	1,400	5,800	2,000	1,400	1,400
Pima	250	*			550	*		
Pinal	200	100	4,200	210	*			
Santa Cruz	*				300	*		
Yavapai	1,500	500	2,800	700	1,000	400	2,800	560
Yuma	900	900	3,860	1,740	1,000	1,000	3,580	1,790
ARIZONA	26,000	15,000	1,960	14,700	23,000	9,000	1,790	8,060

ARIZONA AGRICULTURAL STATISTICS

CORN: Acreage, yield, and production, Arizona, by counties, 1968-75 (cont'd)

COUNTY	1974				1975			
	Planted For All Purposes	FOR GRAIN			Planted For All Purposes	FOR GRAIN		
		Harvested	Yield Per Acre	Production		Harvested	Yield Per Acre	Production
	Acres	Lbs. 1/	Tons 1/		Acres	Lbs. 1/	Tons 1/	
Apache	2,700	2,500	1,120	1,400	2,700	2,500	1,110	1,260
Cochise	400	*			600	500	3,360	840
Coconino	1,500	1,200	1,400	840	1,800	1,000	1,180	590
Gila	*				*			
Graham	400	*			500	*		
Greenlee	*				*			
Maricopa	5,800	1,000	3,470	1,740	6,300	1,400	3,300	2,310
Mohave	*				*			
Navajo	6,500	3,000	1,340	2,020	6,200	4,000	1,180	2,350
Pima	600	*			700	500	2,520	630
Pinal	*				*			
Santa Cruz	300	*			*			
Yavapai	1,200	600	2,800	840	1,200	500	2,520	630
Yuma	1,000	1,000	3,530	1,760	1,000	1,000	3,360	1,680
ARIZONA	21,000	10,000	1,900	9,520	22,000	12,000	1,850	11,090

1/ Converted from 56-pound bushels and rounded.

*Acres planted and/or harvested too small to warrant quantitative estimate. Acres and production, if any, are included in State totals.

CORN: Acreage, yield, production, price, and value, Arizona, 1968-75

Year	Planted For All Purposes	FOR GRAIN				Season Average Price	Value of Production
		Harvested	Yield Per Harvested Acre	Production	Value		
	1,000 Acres	Lbs. 1/	Tons 1/	Dol./Ton 1/	1,000 Dol.		
1968	29	17	1,790	15,230	52.90	805	
1969	32	20	1,510	15,120	52.50	794	
1970	31	15	1,340	10,080	60.00	605	
1971	28	16	1,790	14,340	46.00	660	
1972	26	15	1,960	14,700	60.70	893	
1973	23	9	1,790	8,060	100.00	806	
1974	21	10	1,900	9,520	132.10	1,258	
1975	22	12	1,850	11,090	114.20	1,267	

1/ Converted from 56-pound bushels and rounded.

SORGHUM: Acreage, yield and production, Arizona, by counties, 1968-75 (cont'd)

COUNTY	1974				1975			
	Planted For All Purposes	FOR GRAIN			Planted For All Purposes	FOR GRAIN		
		Harvested	Yield Per Acre	Production		Harvested	Yield Per Acre	Production
	Acres	Lbs. 1/	Tons 1/		Acres	Lbs. 1/	Tons 1/	
Apache	700	600	3,640	1,090	800	500	3,470	870
Cochise	57,000	55,500	5,150	142,970	63,000	61,000	4,200	128,100
Coconino					*			
Gila								
Graham	31,000	29,000	4,760	69,020	35,000	33,300	3,920	65,270
Greenlee	1,000	700	3,680	1,290	1,000	800	2,690	1,080
Maricopa	32,000	29,500	3,700	54,520	37,900	35,000	3,540	62,050
Mohave	1,100	*			1,200	400	2,180	440
Navajo	2,100	500	2,300	570	2,200	600	1,960	590
Pima	8,500	7,700	4,030	15,510	10,100	8,800	2,800	12,320
Pinal	14,000	12,500	4,540	28,350	13,000	12,000	3,700	22,180
Santa Cruz	500	*			500	400	2,910	580
Yavapai	*				*			
Yuma	12,000	10,600	3,690	19,570	15,000	12,000	3,420	20,500
ARIZONA	160,000	147,000	4,540	333,400	180,000	165,000	3,810	314,160

1/ Converted from 56-pound bushels and rounded.

*Acres planted and/or harvested too small to warrant quantitative estimate. Acres and production, if any, are included in State totals.

SORGHUM: Acreage, yield, production, price, and value, Arizona, 1968-75

Year	Planted For All Purposes	FOR GRAIN					Value of Production
		Harvested	Yield Per Harvested Acre	Production	Season Average Price		
	1,000 Acres	Lbs. 1/	Tons 1/	Dol. Ton 1/	1,000 Dol.		
1968	223	216	4,420	477,790	40.70	19,453	
1969	187	175	4,200	367,500	47.10	17,325	
1970	176	163	3,920	319,480	50.70	16,202	
1971	189	174	4,090	355,660	47.10	16,767	
1972	153	136	4,370	297,020	61.40	18,246	
1973	150	140	4,030	282,240	101.10	28,526	
1974	160	147	4,540	333,400	122.50	40,841	
1975	180	165	3,810	314,160	106.00	33,323	

1/ Converted from 56-pound bushels and rounded.

SORGHUM: Monthly and season average prices received by growers, Arizona, 1968-75

Year	Jan.	Feb.	Mar.	Apr.	May	June	July	Aug.	Sept.	Oct.	Nov.	Dec.	Season Average
Dollars per ton													
1968	41.80	43.40	44.80	44.00	43.40	41.40	41.40	40.80	39.20	40.00	40.40	41.40	40.70
1969	43.20	45.00	45.40	45.80	45.00	46.00	48.00	47.40	47.00	46.20	47.40	47.80	47.10
1970	48.40	46.00	46.60	44.40	45.60	44.80	46.80	46.80	47.60	49.00	50.00	50.60	50.70
1971	51.00	52.80	54.00	55.00	55.00	55.00	54.00	52.00	47.00	44.00	48.00	50.00	47.10
1972	49.00	49.00	49.00	49.00	50.00	49.00	50.00	53.00	53.00	54.00	57.00	69.00	61.40
1973	67.00	64.00	63.00	65.00	71.00	76.00	80.00	100.00	93.80	100.00	102.00	99.20	101.10
1974	100.80	107.80	109.00	103.00	105.00	105.00	108.40	119.80	128.60	127.40	129.60	128.20	122.50
1975	122.40	111.60	102.20	102.80	109.00	104.40	106.20	107.20	108.40	108.20	101.40	105.20	106.00

ARIZONA AGRICULTURAL STATISTICS

ALL HAY 1/: Acreage, yield, and production, Arizona, by counties, 1968-75

COUNTY	1968			1969		
	Harvested	Yield Per Acre	Production	Harvested	Yield Per Acre	Production
	Acres	Tons	Tons	Acres	Tons	Tons
Apache	6,600	1.67	11,000	6,600	1.91	12,600
Cochise	10,000	5.49	54,900	9,700	5.30	51,400
Coconino	2,200	3.41	7,500	2,100	3.86	8,100
Gila	800	3.50	2,800	800	3.38	2,700
Graham	5,700	5.49	31,300	6,200	5.89	36,500
Greenlee	2,300	4.57	10,500	2,200	5.23	11,500
Maricopa	110,200	5.32	586,700	96,900	5.10	494,500
Mohave	3,900	3.03	11,800	5,100	4.31	22,000
Navajo	5,200	2.38	12,400	5,200	3.83	19,900
Pima	2,400	4.04	9,700	2,300	4.87	11,200
Pinal	20,600	4.75	97,900	19,300	4.47	86,200
Santa Cruz	1,900	2.63	5,000	1,700	2.47	4,200
Yavapai	6,600	3.05	20,100	6,500	3.00	19,500
Yuma	60,600	5.16	312,400	59,400	5.31	315,700
ARIZONA	239,000	4.91	1,174,000	224,000	4.89	1,096,000
1970			1971			
Apache	7,000	1.76	12,300	7,000	1.56	10,900
Cochise	10,500	4.44	46,600	11,300	4.69	52,950
Coconino	2,000	3.35	6,700	1,700	3.29	5,600
Gila	900	2.89	2,600	1,000	2.30	2,300
Graham	7,100	5.51	39,100	7,200	5.90	42,500
Greenlee	2,400	5.33	12,800	3,100	3.03	9,400
Maricopa	105,200	6.02	633,700	104,700	5.65	591,200
Mohave	5,100	3.80	19,400	6,400	5.41	34,650
Navajo	5,400	3.59	19,400	5,100	3.49	17,800
Pima	2,500	5.04	12,600	2,900	3.69	10,700
Pinal	20,500	4.63	95,000	19,500	4.63	90,200
Santa Cruz	2,300	3.17	7,300	1,400	1.57	2,200
Yavapai	6,200	2.92	18,100	4,600	1.65	7,600
Yuma	65,900	5.95	392,400	64,100	6.15	394,000
ARIZONA	243,000	5.42	1,318,000	240,000	5.30	1,272,000
1972			1973			
Apache	7,600	1.59	12,100	7,500	1.78	13,350
Cochise	11,600	4.84	56,100	11,500	4.45	51,200
Coconino	1,900	2.42	4,600	1,900	2.82	5,360
Gila	1,000	2.40	2,400	900	2.61	2,350
Graham	6,300	4.49	28,300	8,100	4.47	36,200
Greenlee	2,100	4.00	8,400	2,100	4.38	9,200
Maricopa	112,100	5.82	652,100	112,000	6.37	713,820
Mohave	6,500	2.08	13,500	6,200	3.91	24,260
Navajo	5,700	2.11	12,000	5,800	3.21	18,600
Pima	2,400	5.42	13,000	2,500	4.92	12,300
Pinal	20,900	4.34	90,700	20,700	4.84	100,260
Santa Cruz	2,300	2.65	6,100	2,000	3.05	6,100
Yavapai	5,200	2.46	12,800	5,000	2.60	13,000
Yuma	73,400	6.27	459,900	73,800	6.94	512,000
ARIZONA	259,000	5.30	1,372,000	260,000	5.84	1,518,000

ALL HAY 1/: Acreage, yield, and production, Arizona, by counties, 1968-75 (cont'd)

COUNTY	1974			1975		
	Harvested	Yield Per Acre	Production	Harvested	Yield Per Acre	Production
	<u>Acres</u>	<u>Tons</u>	<u>Tons</u>	<u>Acres</u>	<u>Tons</u>	<u>Tons</u>
Apache	7,700	1.81	13,900	7,700	2.21	17,000
Cochise	11,600	4.07	47,200	11,700	5.31	62,100
Coconino	1,800	3.00	5,400	1,800	2.61	4,700
Gila	900	2.67	2,400	800	3.00	2,400
Graham	8,700	4.39	38,200	8,600	5.70	49,000
Greenlee	2,300	5.22	12,000	2,200	5.73	12,600
Maricopa	106,900	6.41	685,300	108,000	6.55	707,400
Mohave	5,600	5.23	29,300	5,600	5.57	31,200
Navajo	6,000	2.93	17,600	6,100	2.72	16,600
Pima	2,700	5.37	14,500	2,700	4.89	13,200
Pinal	18,900	5.16	97,600	18,000	5.65	101,700
Santa Cruz	2,100	2.76	5,800	2,000	3.20	6,400
Yavapai	4,800	2.77	13,300	4,800	2.40	11,500
Yuma	75,000	7.05	528,500	75,000	7.43	557,200
ARIZONA	255,000	5.93	1,511,000	255,000	6.25	1,593,000

1/ Does not include green chop or grazed.

ALL HAY 1/: Acreage, yield, production, price, and value, Arizona, 1968-75

Year	Harvested	Yield Per Harvested Acre	Production	Season Average Price	Value of Production
	<u>1,000 Acres</u>	<u>Tons</u>	<u>1,000 Tons</u>	<u>Dol./Ton</u>	<u>1,000 Dol.</u>
1968	239	4.91	1,174	24.00	28,176
1969	224	4.89	1,096	28.00	30,688
1970	243	5.42	1,318	31.50	41,517
1971	240	5.30	1,272	33.00	41,976
1972	259	5.30	1,372	35.00	48,020
1973	260	5.84	1,518	43.00	65,274
1974	255	5.93	1,511	56.00	84,616
1975	255	6.25	1,593	57.50	91,598

1/ Does not include green chop or grazed.

ARIZONA AGRICULTURAL STATISTICS

ALFALFA HAY 1/: Acreage, yield and production, Arizona, by counties, 1968-75

COUNTY	1968			1969		
	Harvested	Yield Per Acre	Production	Harvested	Yield Per Acre	Production
	<u>Acres</u>	<u>Tons</u>	<u>Tons</u>	<u>Acres</u>	<u>Tons</u>	<u>Tons</u>
Apache	2,300	2.6	6,000	2,500	3.0	7,500
Cochise	8,300	6.1	50,600	8,000	5.9	47,200
Coconino	1,000	5.0	5,000	900	5.8	5,200
Gila	400	5.0	2,000	400	4.8	1,900
Graham	5,500	5.6	30,800	6,000	6.0	36,000
Greenlee	1,800	5.2	9,400	1,700	6.0	10,200
Maricopa	100,000	5.6	560,000	87,000	5.4	469,800
Mohave	3,000	3.5	10,500	4,300	4.7	20,400
Navajo	4,200	2.7	11,300	4,200	4.3	18,100
Pima	2,000	4.5	9,000	1,900	5.4	10,300
Pinal	18,200	5.1	92,800	17,000	4.8	81,600
Santa Cruz	800	4.0	3,200	600	4.0	2,400
Yavapai	3,500	4.1	14,400	3,500	4.1	14,400
Yuma	51,000	5.6	286,000	50,000	5.8	290,000
ARIZONA	202,000	5.4	1,091,000	188,000	5.4	1,015,000
		1970			1971	
Apache	2,600	2.7	7,000	2,500	2.0	5,000
Cochise	8,700	4.9	42,600	9,500	5.1	48,450
Coconino	800	4.9	3,900	500	5.2	2,600
Gila	400	4.0	1,600	500	3.2	1,600
Graham	6,900	5.6	38,600	7,000	6.0	42,000
Greenlee	1,900	6.1	11,600	2,500	3.4	8,500
Maricopa	94,800	6.4	606,700	94,000	6.0	564,000
Mohave	4,200	4.2	17,600	5,500	5.9	32,450
Navajo	4,400	4.0	17,600	4,000	4.0	16,000
Pima	2,100	5.6	11,700	2,500	4.0	10,000
Pinal	18,000	5.0	90,000	17,000	5.0	85,000
Santa Cruz	1,200	4.5	5,400	200	3.0	600
Yavapai	3,000	3.9	11,700	1,300	2.0	2,600
Yuma	56,000	6.5	364,000	54,000	6.8	367,200
ARIZONA	205,000	6.0	1,230,000	201,000	5.9	1,186,000
		1972			1973	
Apache	2,500	2.0	5,000	2,500	3.0	7,600
Cochise	9,500	5.4	51,300	9,500	4.9	47,000
Coconino	500	3.0	1,500	400	4.3	1,700
Gila	500	3.4	1,700	400	3.8	1,500
Graham	6,000	4.6	27,600	7,700	4.5	35,000
Greenlee	1,500	4.8	7,200	1,600	5.0	8,000
Maricopa	100,000	6.2	620,000	100,000	6.8	684,000
Mohave	5,500	2.0	11,000	5,200	4.2	22,000
Navajo	4,500	2.2	9,900	4,500	3.6	16,200
Pima	2,000	6.0	12,000	2,000	5.5	11,000
Pinal	18,000	4.7	84,600	18,700	5.0	94,400
Santa Cruz	1,000	4.0	4,000	1,000	4.5	4,500
Yavapai	1,500	3.6	5,400	1,500	5.4	8,100
Yuma	62,000	6.9	427,800	64,000	7.5	483,000
ARIZONA	215,000	5.9	1,269,000	219,000	6.5	1,424,000

ALFALFA HAY 1/: Acreage, yield and production, Arizona, by counties, 1968-75 (cont'd)

COUNTY	1974			1975		
	Harvested	Yield Per Acre	Production	Harvested	Yield Per Acre	Production
	Acres	Tons	Tons	Acres	Tons	Tons
Apache	2,600	3.0	7,800	2,600	3.4	8,800
Cochise	9,500	4.5	42,500	9,600	6.0	57,600
Coconino	400	5.0	2,000	400	5.0	2,000
Gila	400	3.8	1,500	400	4.5	1,800
Graham	8,200	4.5	37,000	8,100	5.9	47,800
Greenlee	1,800	6.0	10,800	1,800	6.5	11,700
Maricopa	95,000	6.9	655,500	96,000	7.1	681,600
Mohave	4,700	5.9	27,700	4,700	6.3	29,800
Navajo	4,700	3.3	15,500	4,800	3.1	14,900
Pima	2,200	6.0	13,200	2,100	5.6	11,800
Pinal	17,000	5.4	92,000	16,000	6.0	96,700
Santa Cruz	1,000	4.0	4,000	1,000	5.0	5,000
Yavapai	1,500	5.3	8,000	1,500	5.0	7,500
Yuma	66,000	7.6	501,500	66,000	8.0	528,000
ARIZONA	215,000	6.6	1,419,000	215,000	7.0	1,505,000

1/ Does not include green chop or grazed.

ALFALFA HAY 1/: Monthly prices received by growers, Arizona, 1968-75

Year	Jan.	Feb.	Mar.	Apr.	May	June	July	Aug.	Sept.	Oct.	Nov.	Dec.
<u>Dollars per ton</u>												
1968	33.50	33.00	32.00	28.00	24.50	25.50	24.00	22.00	22.00	22.00	23.00	24.00
1969	25.00	26.00	26.00	27.00	27.00	26.50	26.50	26.50	27.50	28.50	29.50	31.50
1970	32.50	34.50	36.50	33.00	30.00	30.00	30.00	29.00	30.00	32.00	33.00	37.00
1971	38.00	37.00	37.00	37.00	35.00	32.00	30.50	29.50	29.50	30.50	31.50	35.00
1972	35.50	36.00	37.00	34.00	33.00	33.00	33.50	34.50	35.00	35.00	36.50	37.50
1973	43.00	44.00	44.00	40.00	40.00	39.00	41.00	41.00	40.00	41.00	46.00	47.00
1974	54.00	54.00	58.00	55.00	56.00	56.00	57.00	59.00	58.00	58.00	60.00	56.00
1975	57.00	57.00	59.00	57.00	57.00	59.50	59.50	59.00	58.50	57.50	60.00	60.50

1/ Does not include green chop or grazed.

ARIZONA AGRICULTURAL STATISTICS

OTHER HAY 1/: Acreage, yield, and production, Arizona, by counties, 1968-75

COUNTY	1968			1969		
	Harvested	Yield Per Acre	Production	Harvested	Yield Per Acre	Production
	Acres	Tons	Tons	Acres	Tons	Tons
Apache	4,300	1.16	5,000	4,100	1.24	5,100
Cochise	1,700	2.53	4,300	1,700	2.47	4,200
Coconino	1,200	2.08	2,500	1,200	2.42	2,900
Gila	400	2.00	800	400	2.00	800
Graham	200	2.50	500	200	2.50	500
Greenlee	500	2.20	1,100	500	2.60	1,300
Maricopa	10,200	2.62	26,700	9,900	2.49	24,700
Mohave	900	1.44	1,300	800	2.00	1,600
Navajo	1,000	1.10	1,100	1,000	1.80	1,800
Pima	400	1.75	700	400	2.25	900
Pinal	2,400	2.13	5,100	2,300	2.00	4,600
Santa Cruz	1,100	1.64	1,800	1,100	1.64	1,800
Yavapai	3,100	1.84	5,700	3,000	1.70	5,100
Yuma	9,600	2.75	26,400	9,400	2.73	25,700
ARIZONA	37,000	2.24	83,000	36,000	2.25	81,000
		1970			1971	
Apache	4,400	1.20	5,300	4,500	1.31	5,900
Cochise	1,800	2.22	4,000	1,800	2.50	4,500
Coconino	1,200	2.33	2,800	1,200	2.50	3,000
Gila	500	2.00	1,000	500	1.40	700
Graham	200	2.50	500	200	2.50	500
Greenlee	500	2.40	1,200	600	1.50	900
Maricopa	10,400	2.60	27,000	10,700	2.54	27,200
Mohave	900	2.00	1,800	900	2.44	2,200
Navajo	1,000	1.80	1,800	1,100	1.64	1,800
Pima	400	2.25	900	400	1.75	700
Pinal	2,500	2.00	5,000	2,500	2.08	5,200
Santa Cruz	1,100	1.73	1,900	1,200	1.33	1,600
Yavapai	3,200	2.00	6,400	3,300	1.52	5,000
Yuma	9,900	2.87	28,400	10,100	2.65	26,800
ARIZONA	38,000	2.32	88,000	39,000	2.20	86,000
		1972			1973	
Apache	5,100	1.40	7,100	5,000	1.15	5,750
Cochise	2,100	2.30	4,800	2,000	2.10	4,200
Coconino	1,400	2.20	3,100	1,500	2.44	3,660
Gila	500	1.40	700	500	1.70	850
Graham	300	2.33	700	400	3.00	1,200
Greenlee	600	2.00	1,200	500	2.40	1,200
Maricopa	12,100	2.65	32,100	12,000	2.49	29,820
Mohave	1,000	2.50	2,500	1,000	2.26	2,260
Navajo	1,200	1.75	2,100	1,300	1.85	2,400
Pima	400	2.50	1,000	500	2.60	1,300
Pinal	2,900	2.10	6,100	2,000	2.93	5,860
Santa Cruz	1,300	1.62	2,100	1,000	1.60	1,600
Yavapai	3,700	2.00	7,400	3,500	1.40	4,900
Yuma	11,400	2.82	32,100	9,800	2.96	29,000
ARIZONA	44,000	2.35	103,000	41,000	2.29	94,000

OTHER HAY 1/: Acreage, yield, and production, Arizona, by counties, 1968-75 (cont'd)

COUNTY	1974			1975		
	Harvested	Yield Per Acre	Production	Harvested	Yield Per Acre	Production
	<u>Acres</u>	<u>Tons</u>	<u>Tons</u>	<u>Acres</u>	<u>Tons</u>	<u>Tons</u>
Apache	5,100	1.20	6,100	5,100	1.6	8,200
Cochise	2,100	2.24	4,700	2,100	2.1	4,500
Coconino	1,400	2.43	3,400	1,400	1.9	2,700
Gila	500	1.80	900	400	1.5	600
Graham	500	2.40	1,200	500	2.4	1,200
Greenlee	500	2.40	1,200	400	2.3	900
Maricopa	11,900	2.50	29,800	12,000	2.2	25,800
Mohave	900	1.78	1,600	900	1.6	1,400
Navajo	1,300	1.62	2,100	1,300	1.3	1,700
Pima	500	2.60	1,300	600	2.3	1,400
Pinal	1,900	2.95	5,600	2,000	2.5	5,000
Santa Cruz	1,100	1.64	1,800	1,000	1.4	1,400
Yavapai	3,300	1.61	5,300	3,300	1.2	4,000
Yuma	9,000	3.00	27,000	9,000	3.2	29,200
ARIZONA	40,000	2.30	92,000	40,000	2.2	88,000

1/ Does not include green chop or grazed.

ARIZONA AGRICULTURAL STATISTICS

SAFFLOWER: Acreage, yield, and production, Arizona, by counties, 1968-75

COUNTY	1968				1969			
	Planted	Harvested	Yield Per Acre	Production	Planted	Harvested	Yield Per Acre	Production
	<u>Acres</u>		<u>Lbs.</u>	<u>Tons 1/</u>	<u>Acres</u>		<u>Lbs.</u>	<u>Tons 1/</u>
Maricopa	7,000	7,000	2,530	8,860	16,850	16,850	2,110	17,800
Pinal	*				3,250	3,250	2,490	4,050
Yuma	2,000	2,000	3,040	3,040	4,900	4,900	2,310	5,650
ARIZONA	9,000	9,000	2,650	11,900	25,000	25,000	2,200	27,500
	1970				1971			
Maricopa	8,100	8,100	2,570	10,400	12,750	12,750	2,730	17,400
Pinal	2,400	2,400	2,250	2,700	3,750	3,750	2,770	5,200
Yuma	500	500	2,800	700	3,500	3,500	3,090	5,400
ARIZONA	11,000	11,000	2,500	13,800	20,000	20,000	2,800	28,000
	1972				1973			
Maricopa	17,100	17,100	2,550	21,800	11,900	11,900	2,090	12,400
Pinal	6,100	6,100	2,160	6,600	10,200	10,200	1,780	9,100
Yuma	9,800	9,800	2,280	11,200	900	900	2,040	900
ARIZONA	33,000	33,000	2,400	39,600	23,000	23,000	1,950	22,400
	1974				1975			
Maricopa	7,700	7,700	2,400	9,250	14,800	14,800	2,400	17,760
Pinal	6,800	6,800	2,250	7,650	24,700	24,700	2,490	30,760
Yuma	500	500	2,800	700	5,000	5,000	2,390	5,980
ARIZONA	15,000	15,000	2,350	17,600	44,500	44,500	2,450	54,500

1/ Converted from pounds and rounded.

*Acres planted and/or harvested too small to warrant quantitative estimate or not published to avoid disclosing individual operations. Acres and production, if any, are included in State totals.

SAFFLOWER: Acreage, yield, production, price, and value, Arizona, 1968-75

Year	Planted	Harvested	Yield Per Harvested Acre	Production	Season Average Price	Value of Production
	<u>Acres</u>		<u>Lbs.</u>	<u>Tons 1/</u>	<u>Dol./Ton</u>	<u>1,000 Dol.</u>
1968	9,000	9,000	2,650	11,900	78.00	928
1969	25,000	25,000	2,200	27,500	78.00	2,145
1970	11,000	11,000	2,500	13,800	95.00	1,311
1971	20,000	20,000	2,800	28,000	105.00	2,940
1972	33,000	33,000	2,400	39,600	110.00	4,356
1973	23,000	23,000	1,950	22,400	150.00	3,360
1974	15,000	15,000	2,350	17,600	310.00	5,456
1975	44,500	44,500	2,450	54,500	285.00	15,533

1/ Converted from pounds and rounded.

SUGARBEETS: Acreage, yield, and production, Arizona, by counties, 1968-75

COUNTY	1968				1969			
	Planted	Harvested	Yield Per Acre	Production	Planted	Harvested	Yield Per Acre	Production
	Acres		Tons	Tons	Acres		Tons	Tons
Cochise	5,200	3,670	13.5	49,700	8,800	7,280	16.4	119,300
Graham	1,100	880	16.5	14,530	770	760	14.3	10,830
Greenlee	*				*			
Maricopa	10,290	9,500	22.8	217,000	16,620	16,050	19.5	312,750
Pima	200	200	14.8	2,950	1,910	1,430	10.5	15,020
Pinal	2,700	2,540	20.5	51,950	3,700	3,640	20.3	73,910
Yuma	*				1,640	1,590	15.3	24,280
ARIZONA	19,600	16,900	20.0	338,000	33,600	30,800	18.1	557,000
	1970				1971			
Cochise	2,130	1,660	15.0	24,840	1,020	930	22.6	21,000
Graham	*				*			
Greenlee	*				*			
Maricopa	14,070	13,690	14.8	202,400	7,690	7,180	22.8	164,000
Pima	220	220	13.7	3,010	*			
Pinal	4,040	3,960	12.1	47,850	2,990	2,590	16.2	42,000
Yuma	100	30	16.0	480	*			
ARIZONA	20,600	19,600	14.2	279,000	11,700	10,700	21.2	227,000
	1972				1973			
Cochise	2,610	2,280	25.0	56,900	3,250	2,210	17.8	39,250
Graham	*				*			
Maricopa	7,370	6,760	22.8	153,900	8,050	7,890	22.8	180,050
Pinal	1,500	1,440	20.4	29,400	1,500	1,350	19.0	25,650
Yuma	420	420	28.1	11,800	1,600	1,550	24.5	38,050
ARIZONA	11,900	10,900	23.1	252,000	14,400	13,000	21.8	283,000
	1974				1975			
Cochise	3,110	2,830	18.8	53,100	4,640	4,330	18.5	80,230
Graham	*				600	360	16.6	5,980
Maricopa	4,670	4,590	25.5	117,000	4,650	4,370	24.6	107,320
Pinal	1,520	1,220	22.0	26,900	5,030	4,890	19.7	96,090
Yuma	1,800	1,760	28.4	50,000	3,080	3,050	25.0	76,380
ARIZONA	11,100	10,400	23.8	247,000	18,000	17,000	21.5	366,000

*Acres planted and/or harvested too small to warrant quantitative estimate or not published to avoid disclosing individual operations. Acres and production, if any, are included in State totals.

SUGARBEETS: Acreage, yield, production, price, and value, Arizona, 1968-75

Year	Planted	Harvested	Yield Per Harvested Acre	Production	Season Average Price	Value of Production
	Acres		Tons	Tons	Dol./Ton	1,000 Dol.
1968	19,600	16,900	20.0	338,000	12.20	4,124
1969	33,600	30,800	18.1	557,000	10.00	5,570
1970	20,600	19,600	14.2	279,000	12.60	3,515
1971	11,700	10,700	21.2	227,000	14.60	3,314
1972	11,900	10,900	23.1	252,000	13.80	3,478
1973	14,400	13,000	21.8	283,000	17.40	4,924
1974	11,100	10,400	23.8	247,000	48.10	11,881
1975	18,000	17,000	21.5	366,000	1/	

1/ Not available.

Vegetables & Melons

James F. Riggs, Agricultural Statistician



BROCCOLI: Acreage, yield, and production, Arizona, by counties, 1967-75

COUNTY	1967-68			1968-69		
	Harvested	Yield Per Acre	Production	Harvested	Yield Per Acre	Production
	<u>Acres</u>	<u>Cwt.</u>	<u>1,000 Cwt.</u>	<u>Acres</u>	<u>Cwt.</u>	<u>1,000 Cwt.</u>
Maricopa	650	60	39	650	65	42
Yuma	*			*		
ARIZONA	650	60	39	650	65	42
	1969-70			1970-71		
Maricopa	800	65	52	1,000	60	60
Yuma	*			*		
ARIZONA	800	65	52	1,000	60	60
	1971-72			1972-73		
Maricopa	700	60	42	500	58	29
Yuma	500	60	30	400	40	16
ARIZONA	1,200	60	72	900	50	45
	1973-74			1974-75		
Maricopa	750	50	38	600	57	34
Yuma	*			*		
ARIZONA	750	50	38	600	57	34

*Acres planted and/or harvested too small to warrant quantitative estimate or not published to avoid disclosing individual operations. Acres and production, if any, are included in State totals.

BROCCOLI: Acreage, yield, production, price, and value, Arizona, 1967-75

Year	Planted	Harvested	Yield Per Harvested Acre	Production	Season Average Price	Value of Production
	<u>Acres</u>		<u>Cwt.</u>	<u>1,000 Cwt.</u>	<u>Dol./Cwt.</u>	<u>1,000 Dol.</u>
1967-68	650	650	60	39	12.00	468
1968-69	650	650	65	42	13.00	546
1969-70	800	800	65	52	15.90	827
1970-71	1,000	1,000	60	60	15.50	930
1971-72	1,200	1,200	60	72	16.20	1,166
1972-73	900	900	50	45	17.60	794
1973-74	750	750	50	38	18.70	711
1974-75	600	600	57	34	17.21	585

ARIZONA AGRICULTURAL STATISTICS

CABBAGE: Acreage, yield, and production, Arizona, by counties, 1968-75

COUNTY	1967-68			1968-69		
	Harvested	Yield Per Acre	Production	Harvested	Yield Per Acre	Production
	Acres	Cwt.	1,000 Cwt.	Acres	Cwt.	1,000 Cwt.
Cochise	*			*		
Maricopa	1,440	118	170	1,350	100	135
Pima	150	235	35	*		
Yuma	310	230	71	150	200	30
ARIZONA	1,900	145	276	1,500	110	165
	1969-70			1970-71		
Cochise	*			*		
Maricopa	855	211	180	1,200	124	149
Pima	*			*		
Yuma	135	215	29	200	130	26
ARIZONA	1,000	210	210	1,400	125	175
	1971-72			1972-73		
Cochise	*			*		
Maricopa	1,100	125	138	910	148	135
Pima	*			*		
Yuma	100	180	18	60	217	13
ARIZONA	1,200	130	156	1,000	149	149
	1973-74			1974-75		
Cochise	*			*		
Maricopa	1,060	135	143	600	162	97
Pima	*			*		
Yuma	140	193	27	100	200	20
ARIZONA	1,200	142	170	700	170	117

*Acres planted and/or harvested too small to warrant quantitative estimate or not published to avoid disclosing individual operations. Acres and production, if any, are included in State totals.

CABBAGE: Acreage, yield, production, price, and value, Arizona, 1968-75

Year	Planted	Harvested	Yield Per Harvested Acre	Production	Season Average Price	Value of Production
	Acres		Cwt.	1,000 Cwt.	Dol./Cwt.	1,000 Dol.
1967-68	2,000	1,900	145	276	3.75	1,035
1968-69	1,700	1,500	110	165	4.11	678
1969-70	1,000	1,000	210	210	5.61	1,178
1970-71	1,400	1,400	125	175	4.02	704
1971-72	1,200	1,200	130	156	4.63	722
1972-73	1,000	1,000	149	149	5.28	786
1973-74	1,200	1,200	140	170	4.95	845
1974-75	700	700	170	117	5.62	657

CANTALOUPS 1/: Acreage, yield, and production, Arizona, by counties, 1968-75

COUNTY	1968			1969		
	Harvested	Yield Per Acre	Production	Harvested	Yield Per Acre	Production
	Acres	Cwt.	1,000 Cwt.	Acres	Cwt.	1,000 Cwt.
Maricopa	1,270	120	152	1,450	119	173
Pinal	130	62	8	760	91	69
Yuma	11,600	120	1,392	13,690	125	1,713
ARIZONA	13,000	119	1,552	15,900	123	1,955
	1970			1971		
Maricopa	1,055	118	125	1,145	110	126
Pinal	*	.	.	690	107	74
Yuma	9,300	144	1,339	9,865	168	1,654
ARIZONA	10,410	141	1,466	11,700	158	1,854
	1972			1973		
Maricopa	970	90	87	1,730	132	229
Pinal	*	.	.	90	133	12
Yuma	10,180	129	1,309	7,480	125	935
ARIZONA	11,150	125	1,396	9,300	126	1,176
	1974			1975		
Maricopa	1,500	142	213	1,870	130	244
Pinal	*	.	.	*	.	.
Yuma	6,100	142	865	5,930	120	712
ARIZONA	7,600	142	1,078	7,800	123	956

1/ Includes spring, summer, and fall harvest.

*Acres planted and/or harvested too small to warrant quantitative estimate or not published to avoid disclosing individual operations. Acres and production, if any, are included in State totals.

CANTALOUPS 1/: Acreage, yield, production, price, and value, Arizona, 1968-75

Year	Planted	Harvested	Yield Per Harvested Acre	Production	Season Average Price	Value of Production
	Acres		Cwt.	1,000 Cwt.	Dol./Cwt.	1,000 Dol.
1968	13,100	13,000	119	1,552	8.00	12,415
1969	16,100	15,900	123	1,955	6.20	12,117
1970	10,410	10,410	141	1,466	8.90	13,052
1971	11,700	11,700	158	1,854	8.58	15,899
1972	11,150	11,150	125	1,396	8.82	12,311
1973	9,300	9,300	126	1,176	11.09	13,039
1974	7,600	7,600	142	1,078	12.39	13,359
1975	7,800	7,800	123	956	13.97	13,360

1/ Includes spring, summer and fall harvest.

ARIZONA AGRICULTURAL STATISTICS

CARROTS: Acreage, yield, and production, Arizona, by counties, 1968-75

COUNTY	1967-68			1968-69		
	Harvested	Yield Per Acre	Production	Harvested	Yield Per Acre	Production
	Acres	Cwt.	1,000 Cwt.	Acres	Cwt.	1,000 Cwt.
Cochise	*			*		
Maricopa	2,860	170	485	2,190	165	362
Pinal	*			125	208	26
Yuma	840	215	181	385	255	98
ARIZONA	3,700	180	660	2,700	180	486
	1969-70			1970-71		
Cochise	200	60	12	*		
Maricopa	2,035	160	325	1,900	130	247
Pinal	*			330	194	64
Yuma	430	335	144	370	495	183
ARIZONA	2,700	180	486	2,600	190	494
	1971-72			1972-73		
Cochise	*			*		
Maricopa	2,800	132	370	2,750	83	229
Pinal	100	200	20	380	84	32
Yuma	900	285	256	670	234	157
ARIZONA	3,800	170	646	3,800	110	418
	1973-74			1974-75		
Cochise	*			*		
Maricopa	1,940	147	285	1,500	103	155
Pinal	160	156	25	*		
Yuma	300	297	89	*		
ARIZONA	2,400	166	399	1,500	103	155

*Acres planted and/or harvested too small to warrant quantitative estimate or not published to avoid disclosing individual operations. Acres and production, if any, are included in State totals.

CARROTS: Acreage, yield, production, price, and value, Arizona, 1968-75

Year	Planted	Harvested	Yield Per Harvested Acre	Production	Season Average Price	Value of Production
	Acres		Cwt.	1,000 Cwt.	Dol./Cwt.	1,000 Dol.
1967-68	3,700	3,700	180	660	6.47	4,309
1968-69	3,000	2,700	180	486	4.72	2,294
1969-70	2,700	2,700	180	486	3.92	1,905
1970-71	2,600	2,600	190	494	8.23	4,066
1971-72	3,800	3,800	170	646	7.79	5,032
1972-73	3,800	3,800	110	418	6.40	2,674
1973-74	2,400	2,400	166	399	7.48	2,985
1974-75	1,500	1,500	103	155	11.09	1,719

CAULIFLOWER: Acreage, yield, and production, Arizona, by counties, 1968-75

COUNTY	1967-68			1968-69		
	Harvested	Yield Per Acre	Production	Harvested	Yield Per Acre	Production
	<u>Acres</u>	<u>Cwt.</u>	<u>1,000 Cwt.</u>	<u>Acres</u>	<u>Cwt.</u>	<u>1,000 Cwt.</u>
Maricopa	590	47	28	800	45	36
Yuma	60	140	8	100	140	14
ARIZONA	650	55	36	900	55	50
	1969-70			1970-71		
Maricopa	615	46	28	670	48	32
Yuma	185	173	32	140	150	21
ARIZONA	800	75	60	810	65	53
	1971-72			1972-73		
Maricopa	850	41	35	750	45	34
Yuma	250	105	26	250	96	24
ARIZONA	1,100	55	61	1,000	58	58
	1973-74			1974-75		
Maricopa	460	43	20	700	63	44
Yuma	340	79	27	300	73	22
ARIZONA	800	59	47	1,000	66	66

CAULIFLOWER: Acreage, yield, production, price, and value, Arizona, 1968-75

Year	Planted	Harvested	Yield Per Harvested Acre	Production	Season Average Price	Value Of Production
	<u>Acres</u>		<u>Cwt.</u>	<u>1,000 Cwt.</u>	<u>Dol./Cwt.</u>	<u>1,000 Dol.</u>
1967-68	650	650	55	36	13.90	500
1968-69	900	900	55	50	14.10	705
1969-70	800	800	75	60	15.60	936
1970-71	810	810	65	53	18.00	954
1971-72	1,100	1,100	55	61	17.90	1,092
1972-73	1,000	1,000	58	58	21.57	1,251
1973-74	800	800	59	47	22.45	1,055
1974-75	1,000	1,000	66	66	24.14	1,593

ARIZONA AGRICULTURAL STATISTICS

HONEYDEWS 1/: Acreage, yield, and production, Arizona, by counties, 1968-75

COUNTY	1968			1969		
	Harvested	Yield Per Acre	Production	Harvested	Yield Per Acre	Production
	<u>Acres</u>	<u>Cwt.</u>	<u>1,000 Cwt.</u>	<u>Acres</u>	<u>Cwt.</u>	<u>1,000 Cwt.</u>
Maricopa	110	45	5	100	90	9
Pinal	120	40	5	*		
Yuma	520	133	69	1,100	177	195
ARIZONA	750	105	79	1,200	170	204
	1970			1971		
Maricopa	70	43	3	100	110	11
Pinal	*			200	40	8
Yuma	1,030	174	179	900	192	173
ARIZONA	1,100	165	182	1,200	160	192
	1972			1973		
Maricopa	200	80	16	200	60	12
Pinal	*			*		
Yuma	1,000	200	200	1,200	205	246
ARIZONA	1,200	180	216	1,400	184	258
	1974			1975		
Maricopa	100	120	12	160	144	23
Pinal	*			*		
Yuma	900	194	175	910	170	155
ARIZONA	1,000	187	187	1,070	166	178

1/ Includes spring and fall acreage, yield, and production.

*Acres planted and/or harvested too small to warrant quantitative estimate or not published to avoid disclosing individual operations. Acres and production, if any, are included in State totals.

HONEYDEWS 1/: Acreage, yield, production, price, and value, Arizona, 1968-75

Year	Planted	Harvested	Yield Per Harvested Acre	Production	Season Average Price	Value of Production
	<u>Acres</u>		<u>Cwt.</u>	<u>1,000 Cwt.</u>	<u>Dol./Cwt.</u>	<u>1,000 Dol.</u>
1968	750	750	105	79	8.00	632
1969	1,200	1,200	170	204	4.53	924
1970	1,100	1,100	165	182	8.26	1,503
1971	1,200	1,200	160	192	8.39	1,611
1972	1,200	1,200	180	216	7.50	1,620
1973	1,400	1,400	184	258	9.97	2,571
1974	1,000	1,000	187	187	11.30	2,114
1975	1,220	1,070	166	178	10.08	1,794

1/ Includes spring and fall acreage, yield, and production.

LETTUCE, OTHER 1/: Acreage, yield, and production, Arizona, by counties, 1968-75

COUNTY	1968			1969		
	Harvested	Yield Per Acre	Production	Harvested	Yield Per Acre	Production
	Acres	Cwt.	1,000 Cwt.	Acres	Cwt.	1,000 Cwt.
Cochise	2,640	178	471	4,090	86	353
Maricopa	18,460	175	3,237	15,970	202	3,233
Pima	1,660	163	270	2,000	187	374
Pinal	8,190	166	1,359	10,190	191	1,951
ARIZONA	30,950	172	5,337	32,250	183	5,911
	1970			1971		
Cochise	2,680	138	370	1,285	202	259
Maricopa	14,225	160	2,283	11,350	211	2,399
Pima	2,745	162	445	2,920	177	518
Pinal	12,420	166	2,065	8,855	183	1,620
ARIZONA	32,070	161	5,163	24,410	196	4,796
	1972			1973		
Cochise	1,580	189	298	1,450	203	295
Maricopa	12,330	174	2,140	10,100	153	1,545
Pima	3,820	156	595	3,780	167	630
Pinal	7,670	157	1,205	5,670	162	920
ARIZONA	25,400	167	4,238	21,000	161	3,390
	1974			1975		
Cochise	700	216	151	900	210	189
Maricopa	8,350	220	1,837	6,360	237	1,510
Pima	2,530	177	447	2,780	198	550
Pinal	3,820	171	655	4,160	197	820
ARIZONA	15,400	201	3,090	14,200	216	3,069

LETTUCE, OTHER 1/: Acreage, yield, production, price, and value, Arizona, 1968-75

Year	Planted	Harvested	Yield Per Harvested Acre	Production	Season Average Price	Value Of Production
	Acres		Cwt.	1,000 Cwt.	Dol./Cwt.	1,000 Dol.
1968	30,950	30,950	172	5,337	5.36	28,614
1969	33,550	32,250	183	5,911	7.78	45,975
1970	32,170	32,070	161	5,163	4.41	22,751
1971	24,410	24,410	196	4,796	8.01	38,397
1972	25,400	25,400	167	4,238	6.72	28,471
1973	21,000	21,000	161	3,390	7.78	26,384
1974	15,400	15,400	201	3,090	8.07	24,932
1975	14,200	14,200	216	3,069	7.31	22,436

1/ Includes spring and fall acreage, yield and production.

ARIZONA AGRICULTURAL STATISTICS

LETTUCE, YUMA: Acreage, yield, and production, Arizona, by counties, 1967-75

COUNTY	1967-68			1968-69		
	Harvested	Yield Per Acre	Production	Harvested	Yield Per Acre	Production
	Acres	Cwt.	1,000 Cwt.	Acres	Cwt.	1,000 Cwt.
Yuma (ARIZONA)	14,450	190	2,750	16,950	191	3,237
	1969-70			1970-71		
Yuma (ARIZONA)	18,830	173	3,258	19,990	196	3,914
	1971-72			1972-73		
Yuma (ARIZONA)	19,800	185	3,657	20,500	225	4,610
	1973-74			1974-75		
Yuma (ARIZONA)	31,200	187	5,833	25,000	198	4,955

LETTUCE, YUMA: Acreage, yield, production, price, and value, Arizona, 1967-75

Year	Planted	Harvested	Yield Per Harvested Acre	Production	Season Average Price	Value of Production
	Acres		Cwt.	1,000 Cwt.	Dol./Cwt.	1,000 Dol.
1967-68	14,450	14,450	190	2,750	5.39	14,810
1968-69	16,950	16,950	191	3,237	6.84	22,131
1969-70	18,830	18,830	173	3,258	4.88	15,890
1970-71	19,990	19,990	196	3,914	5.53	21,641
1971-72	19,800	19,800	185	3,657	7.66	28,010
1972-73	20,500	20,500	225	4,610	8.02	36,994
1973-74	31,200	31,200	187	5,833	4.74	27,642
1974-75	25,000	25,000	198	4,955	7.06	34,998

ALL LETTUCE ^{1/}: Acreage, yield, production, price, and value, Arizona, 1967-75

Year	Planted	Harvested	Yield Per Harvested Acre	Production	Season Average Price	Value of Production
	Acres		Cwt.	1,000 Cwt.	Dol./Cwt.	1,000 Dol.
1967-68	45,500	45,400	178	8,087	5.37	43,424
1968-69	50,500	49,200	186	9,148	7.44	68,106
1969-70	51,000	50,900	165	8,421	4.59	38,641
1970-71	44,400	44,400	196	8,710	6.89	60,038
1971-72	45,200	45,200	175	7,895	7.15	56,481
1972-73	41,500	41,500	193	8,000	7.92	63,378
1973-74	46,600	46,600	191	8,923	5.89	52,574
1974-75	39,200	39,200	205	8,024	7.16	57,434

^{1/} Crop year for Yuma lettuce and calendar year for Other lettuce.

DRY ONIONS: Acreage, yield, and production, Arizona, by counties, 1968-75

COUNTY	1968			1969		
	Harvested	Yield Per Acre	Production	Harvested	Yield Per Acre	Production
	Acres	Cwt.	1,000 Cwt.	Acres	Cwt.	1,000 Cwt.
Maricopa	1,860	311	578	1,725	370	639
Pinal	550	345	190	275	404	111
Yuma	690	325	224	*		
ARIZONA	3,100	320	992	2,000	375	750
	1970			1971		
Maricopa	1,300	415	540	1,040	411	427
Pinal	300	280	84	270	330	89
Yuma	800	300	240	190	285	54
ARIZONA	2,400	360	864	1,500	380	570
	1972			1973		
Maricopa	1,130	488	551	1,400	519	726
Pinal	*			*		
Yuma	370	255	94	200	210	42
ARIZONA	1,500	430	645	1,600	480	768
	1974			1975		
Maricopa	1,200	500	600	1,000	495	495
Pinal	*			*		
Yuma	800	275	220	400	478	191
ARIZONA	2,000	410	820	1,400	490	686

*Acres planted and/or harvested too small to warrant quantitative estimate or not published to avoid disclosing individual operations. Acres and production, if any, are included in State totals.

DRY ONIONS: Acreage, yield, production, price, and value, Arizona, 1968-75

Year	Planted	Harvested	Yield Per Harvested Acre	Production	Season Average Price	Value Of Production
	Acres		Cwt.	1,000 Cwt.	Dol./Cwt.	1,000 Dol.
1968	3,100	3,100	320	992	3.36	3,338
1969	2,200	2,000	375	750	3.16	2,372
1970	2,400	2,400	360	864	4.30	3,712
1971	1,500	1,500	380	570	3.27	1,864
1972	1,500	1,500	430	645	4.88	3,147
1973	1,600	1,600	480	768	8.84	6,792
1974	2,000	2,000	410	820	3.91	3,208
1975	1,400	1,400	490	686	9.23	6,332

ARIZONA AGRICULTURAL STATISTICS

WATERMELONS: Acreage, yield, and production, Arizona, by counties, 1968-75

COUNTY	1968			1969		
	Harvested	Yield Per Acre	Production	Harvested	Yield Per Acre	Production
	<u>Acres</u>	<u>Cwt.</u>	<u>1,000 Cwt.</u>	<u>Acres</u>	<u>Cwt.</u>	<u>1,000 Cwt.</u>
Maricopa	2,000	167	333	2,100	150	315
Pinal	950	155	147	1,400	121	170
Yuma	1,050	190	200	1,600	175	280
ARIZONA	4,000	170	680	5,100	150	765
	1970			1971		
Maricopa	2,000	165	330	1,800	182	328
Pinal	1,200	150	180	1,000	166	166
Yuma	1,100	162	178	1,100	172	189
ARIZONA	4,300	160	688	3,900	175	683
	1972			1973		
Maricopa	2,950	211	623	3,000	130	390
Pinal	250	205	51	700	160	112
Yuma	1,300	157	204	600	132	79
ARIZONA	4,500	195	878	4,300	135	581
	1974			1975		
Maricopa	1,450	187	271	1,900	153	290
Pinal	400	238	95	700	193	135
Yuma	250	192	48	300	180	54
ARIZONA	2,100	197	414	2,900	165	479

WATERMELONS: Acreage, yield, production, price, and value, Arizona, 1968-75

Year	Planted	Harvested	Yield Per Harvested Acre	Production	Season Average Price	Value Of Production
	<u>Acres</u>		<u>Cwt.</u>	<u>1,000 Cwt.</u>	<u>Dol./Cwt.</u>	<u>1,000 Dol.</u>
1968	4,000	4,000	170	680	3.05	2,074
1969	5,100	5,100	150	765	1.82	1,392
1970	4,300	4,300	160	688	3.25	2,236
1971	3,900	3,900	175	683	3.63	2,479
1972	4,500	4,500	195	878	3.07	2,695
1973	4,300	4,300	135	581	3.43	1,993
1974	2,100	2,100	197	414	5.58	2,310
1975	2,900	2,900	165	479	4.27	2,047

POTATOES: Acreage, yield, and production, Arizona, by counties, 1968-75

COUNTY	1968			1969		
	Harvested	Yield Per Acre	Production	Harvested	Yield Per Acre	Production
	Acres	Cwt.	1,000 Cwt.	Acres	Cwt.	1,000 Cwt.
Cochise	*			110	191	21
Maricopa	9,920	233	2,309	12,690	230	2,923
Yuma	180	80	14	*		
ARIZONA	10,100	230	2,323	12,800	230	2,944
	1970			1971		
Cochise	145	200	29	*		
Maricopa	11,080	241	2,674	9,990	281	2,808
Yuma	75	120	9	110	185	20
ARIZONA	11,300	240	2,712	10,100	280	2,828
	1972			1973		
Cochise	*			*		
Maricopa	8,000	300	2,400	9,900	210	2,079
Yuma	*			*		
ARIZONA	8,000	300	2,400	9,900	210	2,079
	1974			1975		
Cochise	*			*		
Maricopa	8,600	260	2,236	7,200	245	1,519
Yuma	*			*		
ARIZONA	8,600	260	2,236	7,200	245	1,519

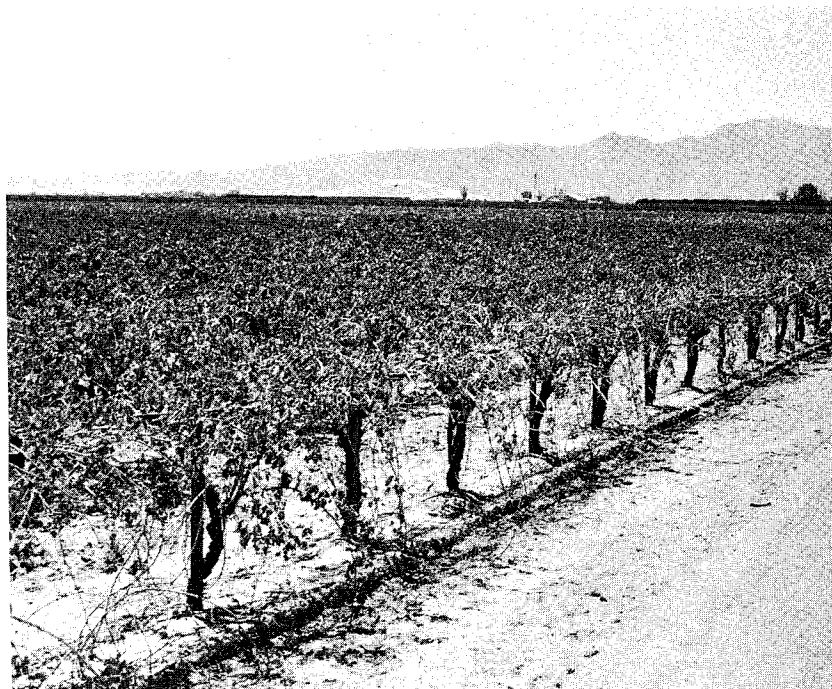
*Acres planted and/or harvested too small to warrant quantitative estimate or not published to avoid disclosing individual operations. Acres and production, if any, are included in State totals.

POTATOES: Acreage, yield, production, price, and value, Arizona, 1968-75

Year	Planted	Harvested	Yield Per Harvested Acre	Production	Season Average Price	Value of Production
	Acres		Cwt.	1,000 Cwt.	Do1./Cwt.	1,000 Do1.
1968	10,100	10,100	230	2,323	3.15	7,317
1969	12,800	12,800	230	2,944	2.90	8,538
1970	11,300	11,300	240	2,712	3.13	8,489
1971	10,100	10,100	280	2,828	2.74	7,749
1972	8,000	8,000	300	2,400	2.85	6,840
1973	9,900	9,900	210	2,079	5.05	10,499
1974	8,600	8,600	260	2,236	5.25	11,739
1975	6,200	6,200	245	1,519	6.00	9,114

Fruit

James F. Riggs, Agricultural Statistician



CITRUS FRUIT: Production and price, Arizona, 1968-69 to 1974-75

Commodity and Crop Year	Equivalent Packed Cartons Produced			Equivalent Returns Per Carton								
	All	Fresh	By-products	FOB			Packing House Door			On-Tree		
				All	Fresh	By-products	All	Fresh	By-products	All	Fresh	By-products
	1,000 Cartons			Dollars								
<u>ALL ORANGES</u>												
1968-69	10,760	6,806	3,954	1.72	2.38	.58	1.10	1.49	.42	.79	1.19	.12
1969-70	9,260	4,812	4,448	1.54	2.53	.47	.99	1.62	.32	.67	1.29	.01
1970-71	7,120	2,618	4,502	1.64	3.26	.72	1.18	2.19	.59	.75	1.76	.16
1971-72	9,800	4,064	5,736	1.70	2.98	.80	1.15	1.85	.65	.67	1.38	.17
1972-73	10,120	5,738	4,382	2.25	3.40	.75	1.56	2.29	.60	1.14	1.87	.18
1973-74	6,820	4,194	2,626	2.28	3.20	.81	1.47	2.01	.61	.83	1.37	-.04
1974-75	9,940	5,900	4,040	2.21	3.26	.68	1.34	1.94	.46	.74	1.35	-.14
<u>NAVEL, SWEET & MISC. ORANGES</u>												
1968-69	2,540	2,034	506	2.58	3.05	.75	1.75	2.05	.58	1.42	1.73	.25
1969-70	1,980	1,448	532	1.97	2.60	.40	1.20	1.55	.25	.80	1.15	-.15
1970-71	1,520	1,208	312	3.03	3.68	.53	2.13	2.58	.40	1.71	2.15	-.03
1971-72	1,800	1,276	524	2.97	4.08	.28	2.13	2.95	.13	1.66	2.48	-.35
1972-73	2,120	1,448	672	2.37	3.38	.20	1.61	2.33	.05	1.18	1.90	-.38
1973-74	900	698	202	2.75	3.45	.35	1.80	2.28	.15	1.23	1.70	-.43
1974-75	1,840	1,400	440	2.99	3.83	.33	1.95	2.53	.10	1.40	1.98	-.45
<u>VALENCIA ORANGES</u>												
1968-69	8,220	4,772	3,448	1.45	2.13	.55	.91	1.28	.40	.61	.98	.10
1969-70	7,280	3,364	3,916	1.41	2.50	.48	.94	1.65	.33	.64	1.35	.03
1970-71	5,600	1,410	4,190	1.27	2.90	.73	.92	1.85	.60	.49	1.43	.18
1971-72	8,000	2,788	5,212	1.42	2.48	.85	.93	1.35	.70	.45	.88	.23
1972-73	8,000	4,290	3,710	2.22	3.40	.85	1.55	2.28	.70	1.12	1.35	.28
1973-74	5,920	3,496	2,424	2.21	3.15	.85	1.42	1.95	.65	.77	1.30	0
1974-75	8,100	4,500	3,600	2.04	3.08	.73	1.20	1.75	.50	.60	1.15	-.10
<u>GRAPEFRUIT</u>												
1968-69	5,020	2,900	2,120	1.44	2.20	.42	.96	1.43	.32	.68	1.15	.05
1969-70	6,320	3,518	2,802	1.71	2.58	.63	1.24	1.80	.53	.96	1.53	.25
1970-71	5,040	1,396	3,644	1.01	2.60	.40	.67	1.78	.25	.42	1.53	0
1971-72	5,080	2,564	2,516	1.60	2.58	.60	1.05	1.65	.43	.72	1.33	.10
1972-73	5,280	2,310	2,970	1.43	2.50	.60	.94	1.53	.48	.61	1.20	.15
1973-74	4,100	2,262	1,838	1.73	2.65	.60	1.02	1.50	.43	.67	1.15	.08
1974-75	5,540	2,760	2,780	1.80	3.00	.60	1.05	1.70	.40	.70	1.35	.05
<u>LEMONS</u>												
1968-69	7,020	2,738	4,282	1.91	3.33	1.02	1.43	2.38	.83	.73	1.68	.13
1969-70	5,640	2,682	2,958	2.99	4.95	1.23	2.44	4.00	1.03	1.74	3.30	.33
1970-71	6,300	2,560	3,740	2.52	4.65	1.05	1.91	3.45	.85	1.31	2.85	.25
1971-72	6,160	2,620	3,540	2.59	4.58	1.13	1.93	3.28	.93	1.30	2.65	.30
1972-73	9,200	3,736	5,464	2.69	4.80	1.25	2.03	3.45	1.05	1.35	2.78	.38
1973-74	5,800	3,468	2,332	4.18	6.15	1.25	3.12	4.50	1.05	2.42	3.80	.35
1974-75	14,400	3,840	10,560	2.32	5.40	1.20	1.65	3.50	.98	.80	2.65	.13
<u>TANGERINES</u>												
1968-69	340	280	60	3.12	3.65	.67	2.22	2.58	.68	1.74	2.10	.20
1969-70	700	406	294	2.38	3.73	.52	2.02	2.75	.38	1.52	2.25	-.13
1970-71	780	474	306	1.99	2.83	.73	1.31	1.83	.50	.73	1.25	-.08
1971-72	1,140	786	354	3.18	4.40	.48	2.42	3.40	.25	1.90	2.88	-.28
1972-73	1,060	676	384	3.12	4.68	.38	2.25	3.40	.23	1.68	2.83	-.35
1973-74	1,360	1,010	350	3.51	4.60	.38	2.54	3.35	.20	1.89	2.70	-.45
1974-75	1,220	880	340	3.39	4.50	.50	2.37	3.18	.28	1.67	2.48	-.43

ARIZONA AGRICULTURAL STATISTICS

CITRUS: Production, by varieties, Arizona, 1972-73 to 1974-75

Variety	CENTRAL ARIZONA <u>1/</u>			WESTERN ARIZONA <u>2/</u>			TOTAL ARIZONA		
	1972-73	1973-74	1974-75	1972-73	1973-74	1974-75	1972-73	1973-74	1974-75
<u>1,000 Cartons</u>									
<u>ALL ORANGES</u>									
Fresh	2,518	1,027	2,658	3,220	3,167	3,242	5,738	4,194	5,900
Products	1,667	467	1,534	2,715	2,159	2,506	4,382	2,626	4,040
TOTAL	4,185	1,494	4,192	5,935	5,326	5,748	10,120	6,820	9,940
<u>NAVEL, SWEET & MISC. ORANGES</u>									
Fresh	1,274	607	1,218	174	91	182	1,448	698	1,400
Products	591	176	382	81	26	58	672	202	440
TOTAL	1,865	783	1,600	255	117	240	2,120	900	1,840
<u>VALENCIA ORANGES</u>									
Fresh	1,244	420	1,440	3,046	3,076	3,060	4,290	3,496	4,500
Products	1,076	291	1,152	2,634	2,133	2,448	3,710	2,424	3,600
TOTAL	2,320	711	2,592	5,680	5,209	5,508	8,000	5,920	8,100
<u>GRAPEFRUIT</u>									
Fresh	1,548	1,357	1,904	762	905	856	2,310	2,262	2,760
Products	1,989	1,103	1,918	981	735	862	2,970	1,838	2,780
TOTAL	3,537	2,460	3,822	1,743	1,640	1,718	5,280	4,100	5,540
<u>LEMONS</u>									
Fresh	635	451	538	3,101	3,017	3,302	3,736	3,468	3,840
Products	929	303	1,478	4,535	2,029	9,082	5,464	2,332	10,560
TOTAL	1,564	754	2,016	7,636	5,046	12,384	9,200	5,800	14,400
<u>TANGERINES</u>									
Fresh	453	636	616	223	374	264	676	1,010	880
Products	257	221	238	127	129	102	384	350	340
TOTAL	710	857	854	350	503	366	1,060	1,360	1,220

CITRUS: Bearing and non-bearing acreage, Arizona, March 1, 1976

Variety	CENTRAL ARIZONA <u>1/</u>		WESTERN ARIZONA <u>2/</u>		TOTAL ARIZONA		
	Bearing	Non-bearing	Bearing	Non-bearing	Bearing	Non-bearing	Bearing and Non-bearing
<u>Acres</u>							
<u>ORANGES</u>							
Valencia	4,850	-	11,000	100	15,850	100	15,950
Navel	5,110	270	230	100	5,340	370	5,710
Sweet	1,110	-	650	-	1,760	-	1,760
<u>GRAPEFRUIT</u>							
White	4,550	150	1,280	480	5,830	630	6,460
Red Blush	2,300	370	1,460	940	3,760	1,310	5,070
<u>LEMONS</u>							
	2,750	290	17,800	3,400	20,550	3,690	24,240
<u>TANGERINE TYPES</u>							
	4,400	130	3,870	-	8,270	130	8,400
TOTAL ARIZONA	25,070	1,210	36,290	5,020	61,360	6,230	67,590

1/ Includes acreage in Maricopa, Pima and Pinal Counties.

2/ Includes acreage in Yuma, Wellton, Dateland, Horn and Hyder.

Source: Arizona Fruit and Vegetable Standardization Service, December 1975.

GRAPES: Production, price, and value, Arizona, 1968-75

Crop Year	Production	Season Average Price	Value
	Tons	DoI./Ton	1,000 DoI.
1968	13,600	391.00	5,318
1969	15,200	250.00	3,800
1970	10,900	340.00	3,706
1971	14,000	510.00	7,140
1972	13,600	555.00	7,548
1973	11,600	455.00	5,278
1974	12,500	720.00	9,000
1975	12,300	595.00	7,319

GRAPES: Acres, by varieties, Arizona, by counties, March 1, 1976

Variety	COUNTY			STATE
	Maricopa	Pinal	Yuma	
Cardinals	260	50	140	450
Exotics	140	-	30	170
Perlettes	300	30	220	550
Thompson Seedless	1,400	100	620	2,120
Miscellaneous	20	-	20	40
STATE	2,120	180	1,030	3,330

Source: Arizona Fruit and Vegetable Standardization Service, April 1975.

5 years

DECIDUOUS FRUIT AND PECANS: Acreage by year planted

Crop and County	1969 and Earlier	1970	1971	1972	1973	1974	1975	1976	Total
<u>Acres</u>									
<u>APPLES</u>									
Cochise	170	70	130	80	100	100	--	100	750
Graham	130	100	--	--	--	--	--	--	230
Other	700	--	--	--	--	--	--	--	700
Total	1,000	170	130	80	100	100	--	100	1,680
<u>APRICOTS</u>									
Maricopa	95	20	20	--	--	--	--	--	135
Pinal	--	170	160	230	--	--	--	--	560
Other	65	--	--	--	--	--	--	--	65
Total	160	190	180	230	--	--	--	--	760
<u>NECTARINES</u>									
Maricopa	40	70	75	25	--	--	--	30	240
Pinal	275	--	--	--	--	--	--	--	275
Other	60	--	--	25	--	--	--	--	85
Total	375	70	75	50	--	--	--	30	600
<u>PEACHES</u>									
Cochise	780	--	50	225	25	--	--	--	1,080
Maricopa	130	25	100	250	20	--	--	75	600
Pima	120	--	--	--	--	--	--	--	120
Pinal	100	80	140	100	--	--	--	--	420
Other	350	--	--	--	--	--	--	--	350
Total	1,480	105	290	575	45	--	--	75	2,570
<u>PLUMS</u>									
Maricopa	225	25	80	90	--	140	--	--	560
Pinal	100	85	350	25	--	--	--	--	560
Other	70	--	45	15	--	--	--	--	130
Total	395	110	475	130	--	140	--	--	1,250
<u>PECANS</u>									
Cochise	520	30	--	50	30	20	20	230	900
Graham	300	--	--	--	--	--	--	--	300
Maricopa	150	--	--	600	550	100	--	--	1,400
Pima	4,600	--	--	--	--	--	--	--	4,600
Pinal	1,625	175	150	250	400	300	250	700	3,850
Yuma	350	300	200	200	240	160	200	100	1,750
TOTAL	7,545	505	350	1,100	1,220	580	470	1,030	12,800

Cattle

Bill Foose, Agricultural Statistician

CATTLE AND CALVES: Number on farms, by counties, Arizona, January 1, 1976

County	All Cattle and Calves	Cows		Heifers 500 Pounds and Over			Steers 500 Pounds and Over	Bulls 500 Pounds and Over	Heifers Steers and Bulls Under 500 Pounds
		Beef Cows	Milk Cows	Beef Cow Replacement	Milk Cow Replacement	Other Heifers			
<u>1,000 Head</u>									
Apache	46.0	25.0	*	2.7	*	1.2	*	2.0	14.6
Cochise	68.0	37.0	*	6.0	*	2.8	3.2	2.4	15.5
Coconino	52.0	23.0	*	2.7	*	*	4.2	2.3	19.3
Gila	40.0	24.0	*	3.0	*	*	*	1.8	9.5
Graham	50.0	18.0	*	2.0	*	2.5	12.0	2.1	12.6
Greenlee	20.0	10.0	*	1.8	*	*	1.2	*	5.5
Maricopa	300.0	19.0	57.3	2.1	12.0	18.0	108.0	4.0	79.6
Mohave	56.0	33.0	*	4.2	*	*	10.4	1.6	6.1
Navajo	41.0	28.0	*	3.2	*	*	*	1.3	6.8
Pima	66.0	18.0	4.5	4.0	1.3	1.6	18.1	1.8	16.7
Pinal	330.0	25.0	2.0	4.5	*	19.0	247.0	3.0	28.9
Santa Cruz	20.0	10.0	*	1.9	*	*	*	*	6.1
Yavapai	68.0	40.0	*	6.4	*	*	3.1	3.7	13.3
Yuma	123.0	2.0	*	*	*	6.4	90.2	*	22.5
ARIZONA	1,280.0	312.0	68.0	45.0	15.0	55.0	500.0	28.0	257.0

*Number too small to warrant quantitative estimate. Cattle and calves, if any, are included in the State totals.

CATTLE AND CALVES: Number on farms and value, Arizona, January 1, 1970-76

Year	All Cattle and Calves	Cows		Heifers 500 Pounds and Over			Steers 500 Pounds and Over	Bulls 500 Pounds and Over	Heifers, Steers and Bulls Under 500 Pounds	Value	
		Beef Cows	Milk Cows	Beef Cow Replacement	Milk Cow Replacement	Other Heifers				Per Head	Total
<u>1,000 Head</u>										<u>Dol.</u>	<u>1,000 Dol.</u>
1970	1,302	367	49	43	13	47	436	26	321	165	214,830
1971	1,289	346	50	47	13	40	455	25	313	165	212,685
1972	1,295	348	50	47	13	42	453	25	317	190	246,050
1973	1,420	342	53	43	13	42	582	25	320	230	326,600
1974	1,390	351	61	49	15	42	531	28	313	325	451,750
1975	1,170	372	64	41	25	35	369	26	238	165	193,050
1976	1,280	312	68	45	15	55	500	28	257	195	249,600

ARIZONA AGRICULTURAL STATISTICS

CATTLE AND CALVES: Number on farms, by counties, Arizona, January 1, 1976

County	Cattle on Feed	Milk Cows and Replacement Heifers	Range Cattle and Calves	Total
<u>1,000 Head</u>				
Apache			46.0	46.0
Cochise	3.0	1.1	63.9	68.0
Coconino			52.0	52.0
Gila			40.0	40.0
Graham	6.0	.8	43.2	50.0
Greenlee		.6	19.4	20.0
Maricopa	144.0	69.3	86.7	300.0
Mohave		.2	55.8	56.0
Navajo		.5	40.5	41.0
Pima	14.0	5.8	46.2	66.0
Pinal	245.0	2.6	82.4	330.0
Santa Cruz			20.0	20.0
Yavapai		.9	67.1	68.0
Yuma	98.0	1.2	23.8	123.0
ARIZONA	510.0	83.0	687.0	1,280.0

RANGE CATTLE AND CALVES: Number by counties, Arizona, January 1, 1976

County	Beef Cows That Have Calved	Beef Replacement Heifers over 500 Pounds	Bulls, Calves and Other	Total
<u>1,000 Head</u>				
Apache	25.0	2.7	18.3	46.0
Cochise	37.0	6.0	20.9	63.9
Coconino	23.0	2.7	26.3	52.0
Gila	24.0	3.0	13.0	40.0
Graham	18.0	2.0	23.2	43.2
Greenlee	10.0	1.8	7.6	19.4
Maricopa	19.0	2.1	65.6	86.7
Mohave	33.0	4.2	18.6	55.8
Navajo	28.0	3.2	9.3	40.5
Pima	18.0	4.0	24.2	46.2
Pinal	25.0	4.5	52.9	82.4
Santa Cruz	10.0	1.9	8.1	20.0
Yavapai	40.0	6.4	20.7	67.1
Yuma	2.0	.5	21.3	23.8
ARIZONA	312.0	45.0	330.0	687.0

CATTLE AND CALVES: Inventory, calf crop, and disposition, Arizona, 1970-75

Year	All Cattle on Jan. 1	Number Calves Born	Inshipments	Marketings		Slaughter on Farms	Deaths	
			All Cattle	Cattle	Calves	All Cattle	Cattle	Calves
<u>1,000 Head</u>								
1970	1,302	341	922	1,104	122	4	22	24
1971	1,289	338	1,015	1,143	158	4	22	20
1972	1,295	327	1,176	1,177	155	4	23	19
1973	1,420	335	1,159	1,292	172	3	24	33
1974	1,390	355	747	1,164	104	3	23	28
1975 <u>1/</u>	1,170	316	880	957	79	3	29	18

1/ Preliminary

COMMERCIAL CATTLE SLAUGHTER: Number, average, and total liveweight, Arizona, 1970-75

Year	Cattle			Calves			Total		
	Number	Weight Per Head	Total Liveweight	Number	Weight Per Head	Total Liveweight	Number	Weight Per Head	Total Liveweight
		<u>Lbs.</u>	<u>1,000 Lbs.</u>		<u>Lbs.</u>	<u>1,000 Lbs.</u>		<u>Lbs.</u>	<u>1,000 Lbs.</u>
1970	508,500	1,006	511,710	2,400	499	1,198	510,900	1,004	512,908
1971	520,500	983	511,469	2,500	506	1,264	523,000	980	512,733
1972	541,500	982	531,652	2,500	492	1,230	544,000	980	532,882
1973	507,000	992	503,134	1,300	488	635	508,300	991	503,769
1974	510,500	1,024	522,604	1,100	474	521	511,600	1,023	523,125
1975	476,500	998	475,725	4,200	479	2,010	480,700	994	477,735

MILK COWS AND PRODUCTION OF MILK AND MILKFAT: Arizona, 1970-75

Year	Milk Cows <u>1/</u>	Production of Milk and Milkfat				
		Per Milk Cow		Milkfat Percent	Total	
		Milk	Milkfat		Milk	Milkfat
	<u>1,000 Head</u>	<u>Lbs.</u>		<u>Million Lbs.</u>		
1970	50	11,700	412	3.52	585	21
1971	50	12,400	438	3.53	620	22
1972	50	12,800	448	3.50	640	22
1973	57	12,930	454	3.51	737	26
1974	62	13,065	463	3.54	810	29
1975 <u>2/</u>	67	12,537	445	3.55	840	30

1/ Average number on farms during year, excluding heifers not yet fresh.2/ Preliminary

ARIZONA AGRICULTURAL STATISTICS

ALL CATTLE: Monthly average prices received by producers, Arizona, 1970-75

Year	Jan.	Feb.	Mar.	Apr.	May	June	July	Aug.	Sept.	Oct.	Nov.	Dec.
------	------	------	------	------	-----	------	------	------	-------	------	------	------

STEERS AND HEIFERS Dollars per cwt.

1970	27.90	28.10	30.80	30.80	29.40	30.20	30.20	28.90	27.80	28.00	27.40	26.50
1971	27.90	31.00	30.50	31.30	31.90	31.10	30.00	31.10	30.90	31.10	32.30	33.70
1972	35.50	34.50	34.40	33.40	35.30	36.00	36.10	34.20	32.90	33.90	34.50	37.40
1973	40.50	42.50	44.20	43.20	44.40	44.50	45.60	52.60	46.30	40.30	42.50	40.40
1974	48.60	47.20	42.90	42.30	41.50	35.00	41.50	44.90	35.90	37.00	39.50	32.20
1975	33.00	32.40	33.10	40.80	45.50	45.50	42.40	37.40	41.30	41.80	41.70	43.80

COWS Dollars per cwt.

1970	19.40	20.50	22.10	20.30	19.90	20.90	19.70	19.40	19.70	19.30	18.20	18.30
1971	19.00	20.50	20.50	21.20	20.80	21.30	21.30	20.50	22.10	21.60	20.20	21.70
1972	22.60	23.70	23.60	23.10	24.20	24.30	24.40	23.30	24.50	24.60	23.60	24.90
1973	27.00	28.50	30.40	28.50	28.00	30.50	30.60	35.10	35.40	29.70	27.20	29.10
1974	33.20	31.70	27.50	32.80	25.00	21.40	22.50	22.80	18.60	17.10	17.00	17.50
1975	16.00	17.60	17.70	21.70	23.50	21.30	19.20	21.00	21.80	19.80	21.40	22.40

ALL BEEF CATTLE Dollars per cwt.

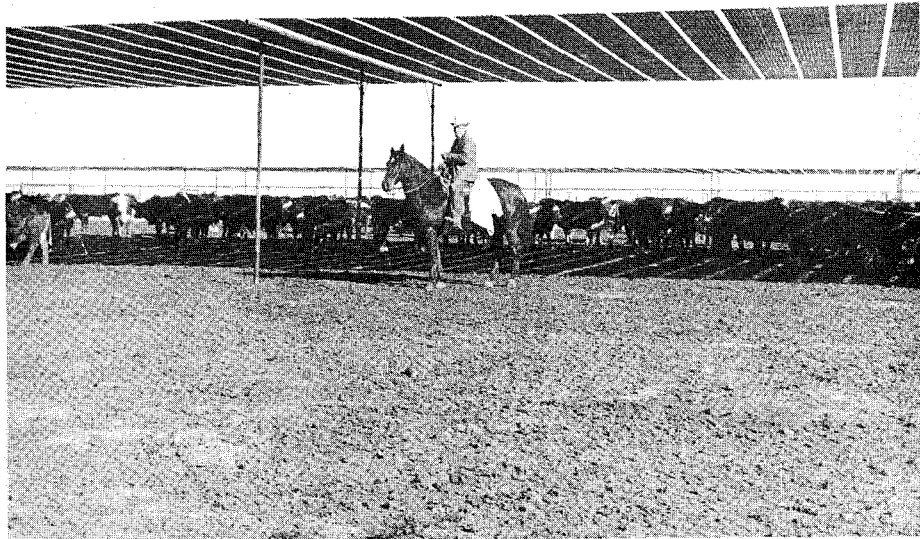
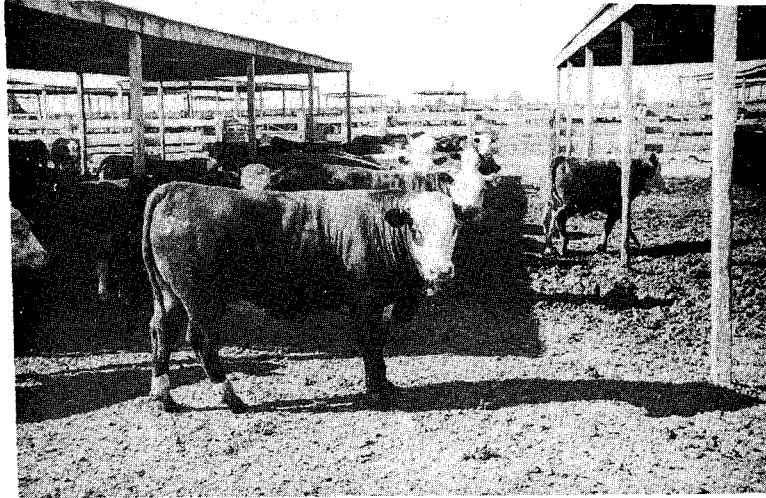
1970	27.10	27.70	30.40	30.50	28.90	29.40	29.90	28.40	27.40	27.10	25.40	26.20
1971	27.30	30.50	29.90	30.80	31.00	30.10	29.40	30.40	30.00	29.70	30.60	32.90
1972	34.30	33.60	33.80	32.50	34.00	34.80	35.40	33.60	32.10	32.80	32.20	35.90
1973	39.70	41.70	43.40	42.50	43.30	42.80	44.70	51.40	45.70	39.20	40.40	39.50
1974	46.80	45.80	42.00	41.50	40.20	33.60	40.60	43.10	34.50	34.80	36.60	31.00
1975	31.00	30.80	31.30	38.90	42.60	41.10	38.70	35.80	39.20	37.80	37.00	40.60

CALVES Dollars per cwt.

1970	30.80	33.20	34.20	33.80	33.70	32.80	32.80	31.50	31.60	34.30	33.50	32.90
1971	32.90	34.50	36.70	35.60	35.60	35.00	34.00	35.00	35.30	37.20	39.00	39.70
1972	40.00	41.00	40.80	38.40	40.60	43.00	42.00	42.80	46.00	46.20	48.00	49.10
1973	54.50	55.50	60.00	52.00	52.70	52.40	52.40	65.00	52.20	55.70	50.00	47.20
1974	56.30	52.40	43.90	42.10	37.10	31.60	33.10	37.30	25.50	25.50	27.50	25.00
1975	22.50	23.50	24.10	26.80	27.20	25.00	26.00	26.10	27.70	28.50	30.70	32.50

Cattle on Feed

Bill Foose, Agricultural Statistician



ARIZONA AGRICULTURAL STATISTICS

CATTLE ON FEED: Number by counties, Arizona, Jan. - Dec. 1970-75

County	1970											
	Jan.	Feb.	Mar.	Apr.	May	June	July	Aug.	Sept.	Oct.	Nov.	Dec.
	1,000 Head											
Maricopa	264	253	244	224	217	214	209	205	200	209	235	252
Pinal	151	150	150	139	137	153	155	151	152	146	172	187
Yuma	68	71	69	64	61	56	47	42	38	35	48	61
Other	27	26	29	27	25	25	22	24	23	26	31	31
ARIZONA	510	500	492	454	440	448	433	422	413	416	486	531
	1971											
Maricopa	251	248	245	229	215	208	200	186	174	173	188	188
Pinal	185	180	187	180	179	204	211	207	209	213	237	243
Yuma	59	60	61	62	61	60	55	57	50	52	63	67
Other	29	29	30	26	26	26	26	25	22	21	24	26
ARIZONA	524	517	523	497	481	498	492	475	455	459	512	524
	1972											
Maricopa	198	197	204	206	206	196	189	185	178	184	192	212
Pinal	242	247	248	246	249	255	266	265	267	266	302	309
Yuma	72	67	66	66	65	64	58	65	62	66	77	87
Other	27	29	30	29	30	31	29	28	29	28	26	26
ARIZONA	539	540	548	547	550	546	542	543	536	544	597	634
	1973											
Maricopa	230	215	214	203	186	179	179	171	183	182	190	181
Pinal	301	318	308	296	283	292	293	279	274	275	288	294
Yuma	98	99	94	88	85	85	76	70	69	78	83	92
Other	26	26	27	27	24	25	28	28	30	30	32	25
ARIZONA	655	658	643	614	578	581	576	548	556	565	593	592
	1974											
Maricopa	182	186	185	177	171	165	150	127	111	94	94	94
Pinal	303	304	280	251	238	230	216	206	195	175	176	154
Yuma	100	103	106	104	99	93	83	75	72	59	61	64
Other	24	27	26	26	26	25	27	23	23	20	18	22
ARIZONA	609	620	597	558	534	513	476	431	401	348	349	334
	1975											
Maricopa	88	83	81	83	82	90	97	95	94	105	132	141
Pinal	148	145	142	163	169	191	194	190	186	199	233	245
Yuma	63	61	61	61	62	62	68	65	64	71	79	94
Other	20	19	20	22	22	22	21	21	14	22	22	21
ARIZONA	319	308	304	329	335	365	380	371	358	397	466	501

CATTLE ON FEED: Number of classes, weight groups of steers & heifers, Arizona, quarterly 1970-76

Date	Total	Steers and Steer Calves	Heifers and Heifer Calves	Cows and Others	Under 500 lbs.	500-699 lbs.	700-899 lbs.	900-1,099 lbs.	1,100 lbs. & over
		<u>1,000 Head</u>			<u>1,000 Head</u>				
<u>1970</u>									
Jan. 1	510	453	56	1	68	159	184	94	5
Apr. 1	454	421	32	1	48	128	149	121	8
July 1	433	366	66	1	95	108	147	79	4
Oct. 1	416	383	29	4	52	131	143	86	4
<u>1971</u>									
Jan. 1	524	488	35	1	73	166	161	119	5
Apr. 1	497	432	64	1	109	128	164	92	4
July 1	492	460	30	2	137	116	137	98	4
Oct. 1	459	418	40	1	59	149	171	76	4
<u>1972</u>									
Jan. 1	539	481	56	2	162	171	142	60	4
Apr. 1	547	497	49	1	84	141	205	112	5
July 1	542	507	34	1	99	145	186	111	1
Oct. 1	544	516	27	1	104	191	160	89	0
<u>1973</u>									
Jan. 1	655	623	31	1	108	206	250	91	0
Apr. 1	614	577	36	1	113	135	214	146	6
July 1	576	546	29	1	133	132	176	134	1
Oct. 1	565	541	23	1	143	167	124	126	5
<u>1974</u>									
Jan. 1	609	585	23	1	131	169	184	123	2
Apr. 1	558	536	21	1	78	136	177	166	1
July 1	476	457	18	1	13	111	145	184	23
Oct. 1	348	327	20	1	11	65	127	129	16
<u>1975</u>									
Jan. 1	319	296	22	1	17	75	145	78	3
Apr. 1	329	313	15	1	33	101	123	66	5
July 1	380	357	22	1	45	120	136	77	1
Oct. 1	397	365	31	1	37	126	151	78	4
<u>1976</u>									
Jan. 1	510	454	54	2	67	138	210	92	1

FED CATTLE MARKETED FOR SLAUGHTER: Arizona, 1970-75

Year	Jan.	Feb.	Mar.	Apr.	May	June	July	Aug.	Sept.	Oct.	Nov.	Dec.	Total
<u>1,000 Head</u>													
1970	63	63	82	86	82	82	81	73	70	60	48	70	860
1971	74	61	83	88	81	90	79	77	71	66	72	59	901
1972	72	78	67	71	85	92	79	79	76	73	65	56	893
1973	68	71	79	81	87	86	86	70	72	88	76	55	919
1974	58	71	72	76	70	74	84	73	80	103	75	59	895
1975	56	54	66	65	62	61	61	60	66	65	56	61	733

ARIZONA AGRICULTURAL STATISTICS

CATTLE AND CALF INSHIPMENTS 1/: Arizona, by counties, 1970-75

COUNTY OF DESTINATION	1970	1971	1972	1973	1974	1975
<u>Number of Head <u>2/</u></u>						
Apache	3,146	2,994	5,072	3,393	3,076	2,612
Cochise	31,440	21,403	27,714	16,776	15,211	22,706
Coconino	2,117	2,692	732	1,451	1,470	262
Gila	2,071	386	287	556	202	6,195
Graham	8,647	5,335	6,811	7,462	6,855	5,103
Greenlee	481	459	861	363	153	167
Maricopa	383,383	367,619	456,055	402,935	174,563	265,984
Mohave	3,035	2,894	650	4,311	2,755	841
Navajo	2,891	2,399	1,665	2,246	790	2,162
Pima	34,958	34,605	27,272	27,527	25,762	45,863
Pinal	178,275	242,212	352,439	353,385	222,462	273,991
Santa Cruz	10,906	8,106	4,508	12,575	1,298	3,024
Yavapai	8,645	12,350	18,639	18,068	17,606	13,905
Yuma	101,323	118,209	149,693	161,121	107,478	144,640
ARIZONA	771,318	821,663	1,052,398	1,012,169	579,681	787,455

1/ Source: Arizona Livestock Sanitary Board inspection records.

2/ Does not include dairy cows or animals shipped in for immediate slaughter.

CATTLE AND CALF INSHIPMENTS 1/: By class, Arizona, 1970-75

CLASS	1970	1971	1972	1973	1974	1975
<u>Number of Head <u>2/</u></u>						
Steers 1+	436,526	429,256	597,227	404,417	355,750	457,585
Bulls	2,350	4,186	17,060	13,314	11,463	7,794
Heifers	13,940	10,903	12,136	21,076	12,100	18,419
Cows	2,061	7,070	7,993	8,848	5,421	4,439
Calves	120,301	158,587	241,382	381,697	125,316	160,737
Mixed	196,140	211,661	176,600	182,817	69,631	138,481
TOTAL	771,318	821,663	1,052,398	1,012,169	579,681	787,455

1/ Source: Arizona Livestock Sanitary Board inspection records.

2/ Does not include dairy cows or animals shipped in for immediate slaughter.

CATTLE AND CALF OUTSHIPMENTS 1/: Arizona, by counties, 1970-75

COUNTY OF ORIGIN	1970	1971	1972	1973	1974	1975
<u>Number of Head</u>						
Apache	22,224	24,194	18,445	19,537	17,402	15,846
Cochise	48,102	42,093	47,049	56,700	40,936	43,883
Coconino	19,662	15,245	16,263	19,046	13,538	14,630
Gila	8,193	10,715	8,725	6,117	4,515	7,351
Graham	11,530	17,171	10,217	10,287	12,137	12,183
Greenlee	4,512	2,698	2,401	2,507	2,160	1,853
Maricopa	256,017	254,976	234,503	286,629	173,192	122,089
Mohave	19,888	19,035	20,868	27,625	20,330	27,859
Navajo	15,937	12,123	13,705	15,649	9,655	13,493
Pima	30,023	25,619	20,301	31,774	20,432	34,813
Pinal	149,822	192,986	210,884	257,666	278,553	186,858
Santa Cruz	9,773	13,545	11,520	12,419	6,566	7,184
Yavapai	31,142	32,338	40,045	49,759	18,474	23,900
Yuma	139,226	141,672	152,749	184,001	166,772	89,154
ARIZONA	766,051	804,410	807,675	979,716	784,662	601,096

1/ Source: Arizona Livestock Sanitary Board inspection records.

CATTLE AND CALF OUTSHIPMENTS 1/: By class, Arizona, 1970-75

CLASS	1970	1971	1972	1973	1974	1975
<u>Number of Head</u>						
Steers 1+	528,829	536,683	545,440	694,051	578,372	403,069
Bulls	6,242	6,663	8,450	8,428	9,231	8,355
Heifers	70,916	55,267	46,730	47,775	41,784	43,978
Cows	40,604	50,938	55,490	59,407	52,068	69,366
Calves	119,460	154,859	151,565	170,055	103,207	76,328
TOTAL	766,051	804,410	807,675	979,716	784,662	601,096

1/ Source: Arizona Livestock Sanitary Board inspection records.

Hogs

Doyle C. Johnson, Agricultural Statistician

HOGS AND PIGS: Number on farms by county, Arizona, December 1, 1973, 1974 and 1975

County	1973	1974	1975
<u>1,000 Head</u>			
Apache	*	*	*
Cochise	11.0	13.1	13.0
Coconino	*	*	*
Gila	*	*	*
Graham	15.0	17.1	17.5
Greenlee	*	*	*
Maricopa	19.0	15.2	10.5
Mohave	*	*	*
Navajo	11.0	25.6	26.0
Pima	10.0	7.4	10.0
Pinal	11.0	14.4	13.5
Santa Cruz	*	*	*
Yavapai	*	*	*
Yuma	*	4.2	4.5
ARIZONA	81.0	99.0	97.0

*Number too small to warrant quantitative estimate or not published to avoid disclosing individual operations. Hogs, if any are included in the State totals.

HOGS: Inventory by classes, weight groups and farm value, Arizona, December 1, 1968-75

Year	Breeding	Market	Market Hogs and Pigs by Weight Group					All Hogs	Value	
			Under 60 Lbs.	60-119 Lbs.	120-179 Lbs.	180-219 Lbs.	220 Lbs. and Over		Per Head	Total
<u>1,000 Head</u>										
									<u>Dol.</u>	<u>1,000 Dol.</u>
1968	9	51	19	11	10	10	1	60	25.90	1,554
1969	10	59	21	14	12	9	3	69	34.30	2,367
1970	12	69	25	17	14	11	2	81	25.00	2,025
1971	12	85	25	23	21	13	3	97	26.50	2,571
1972	10	72	26	19	14	11	2	82	33.00	2,706
1973	12	69	22	19	14	12	2	81	58.00	4,698
1974	12	87	26	20	20	16	5	99	49.50	4,901
1975	12	85	31	20	18	14	2	97	63.00	6,111

PIG CROP: Sows farrowed, pigs per litter, pigs saved, Arizona, 1968-75

Year	Total Pig Crop Spring and Fall		Spring Pig Crop <u>1/</u>			Fall Pig Crop <u>2/</u>		
	Sows Farrowed	Pigs Saved	Sows Farrowed	Pigs per Litter	Pigs Saved	Sows Farrowed	Pigs per Litter	Pigs Saved
	<u>1,000</u>	<u>1,000</u>	<u>1,000</u>		<u>1,000</u>	<u>1,000</u>		<u>1,000</u>
1968	12.1	95	5.5	8.1	45	6.6	7.6	50
1969	13.6	109	6.6	8.2	54	7.0	7.8	55
1970	15.3	120	7.6	7.9	60	7.7	7.8	60
1971	18.3	139	8.7	7.7	67	9.6	7.7	74
1972	16.4	130	8.6	8.0	69	7.8	7.8	61
1973	17.5	138	8.9	8.2	73	8.6	7.6	65
1974	18.3	140	8.3	7.6	63	10.0	7.7	77
1975	20.8	157	10.8	7.5	81	10.0	7.6	76

1/ Spring, December through May.2/ Fall, June through November.

COMMERCIAL HOG SLAUGHTER: Number, average and total liveweight, Arizona 1968-75

Year	Number	Weight Per Head	Total Liveweight
		<u>Lbs.</u>	<u>1,000 Lbs.</u>
1968	179,400	236	42,291
1969	177,700	235	41,730
1970	183,400	233	42,650
1971	219,000	232	50,762
1972	180,200	232	41,761
1973	161,800	232	37,516
1974	183,500	228	41,845
1975	185,400	224	41,581

ALL HOGS: Monthly average prices received by producers, Arizona, 1968-75

Year	Jan.	Feb.	Mar.	Apr.	May	June	July	Aug.	Sept.	Oct.	Nov.	Dec.
	<u>Dollars per cwt.</u>											
1968	17.70	18.80	19.20	18.90	19.40	19.20	20.20	19.50	19.20	18.20	17.60	18.50
1969	19.00	19.00	20.10	20.10	22.00	24.80	26.40	27.10	25.60	25.60	25.90	26.80
1970	27.60	28.80	26.60	25.10	24.60	24.90	26.00	22.90	20.90	18.90	16.40	16.90
1971	16.50	20.70	18.10	17.30	17.80	18.60	20.40	19.90	19.10	20.60	20.00	21.40
1972	24.60	26.80	23.30	23.70	26.50	26.60	28.60	29.90	29.80	28.80	28.30	31.70
1973	33.00	36.30	39.30	36.40	38.60	38.80	43.00	54.90	45.40	43.20	42.10	40.20
1974	42.00	41.90	37.30	32.30	28.70	26.40	38.00	40.70	36.00	40.70	39.50	42.00
1975	40.70	41.10	41.00	41.50	48.10	51.10	56.70	57.80	59.90	60.10	55.50	51.80

Sheep

Doyle C. Johnson, Agricultural Statistician



SHEEP AND LAMBS: Arizona, by counties, January 1, 1974, 1975 and 1976

COUNTY	Stock Sheep and Lambs <u>1/</u>			Sheep on Feed <u>2/</u>			All Sheep and Lambs			New Crop Lambs		
	1974	1975	1976	1974	1975	1976	1974	1975	1976	1974	1975	1976
<u>1,000 Head</u>												
Apache	121.8	132.0	106.0				121.8	132.0	106.0	<u>3/</u>	<u>3/</u>	8.0
Coconino	99.4	64.0	83.5				99.4	64.0	83.5	<u>3/</u>	<u>3/</u>	6.3
Maricopa	54.5	65.0	61.0	48.0	83.2	39.4	102.5	148.2	100.4	55.5	49.4	48.8
Navajo	91.3	84.0	75.5				91.3	84.0	75.5	<u>3/</u>	<u>3/</u>	5.7
Pinal	15.7	16.0	17.9	19.2	19.5	24.4	34.9	35.5	42.3	16.0	12.2	14.3
Yuma	9.3	19.0	16.1	28.8	27.3	46.2	38.1	46.3	62.3	9.5	14.4	12.9
ARIZONA	392.0	380.0	360.0	96.0	130.0	110.0	488.0	510.0	470.0	81.0	76.0	96.0

1/ Excludes new crop lambs (those born after September 30 the previous year and on hand January 1).

2/ Excludes stock sheep and lambs and new crop lambs.

3/ Not available.

SHEEP: By classes, Farm Value and Lamb Crop, Arizona, January 1, 1968-1976

Year	Stock Sheep and Lambs <u>1/</u>		Sheep on Feed <u>2/</u>	All Sheep and Lambs	Farm Value		Lamb Crop	
	Ewes	Rams and Wethers			Per Head	Total	Breeding Ewes Jan. 1	Lambs Saved
1968	384	30	73	487	18.25	8,890	313	248
1969	396	32	72	500	17.80	8,900	321	254
1970	392	32	84	508	22.00	11,176	321	254
1971	398	32	76	506	20.00	10,120	326	261
1972	380	32	91	503	19.00	9,557	311	245
1973	361	31	110	502	23.50	11,797	294	232
1974	363	29	96	488	28.00	13,664	294	232
1975	349	31	130	510	30.50	15,555	282	223
1976	330	30	110	470	33.00	15,510	286	<u>3/</u>

1/ Ewes, rams and wethers of all ages excluding new crop lambs.

2/ Excludes stock sheep and lambs and new crop lambs.

3/ Not available until lambing is complete.

ARIZONA AGRICULTURAL STATISTICS

COMMERCIAL SHEEP SLAUGHTER: Number, average and total liveweight, Arizona 1968-75

Year	Number	Weight Per Head	
		Lbs.	1,000 Lbs.
1968	13,600	110	1,498
1969	1,500	100	150
1970	1,600	106	170
1971	1,400	106	149
1972	1,200	107	128
1973	1,600	101	161
1974	1,400	96	135
1975	1,700	102	166

SHEEP AND LAMBS: Monthly average prices received by producers, Arizona, 1968-75

Year	Jan.	Feb.	Mar.	Apr.	May	June	July	Aug.	Sept.	Oct.	Nov.	Dec.
<u>SHEEP Dollars per cwt.</u>												
1968	5.50	6.50	7.00	7.00	6.00	6.00	6.00	6.00	6.50	6.50	6.50	6.50
1969	6.50	7.50	7.50	7.50	7.50	7.50	7.50	7.50	7.50	7.50	7.00	7.00
1970	7.00	7.00	7.00	7.00	7.00	7.00	7.00	7.00	7.00	7.00	7.00	7.00
1971	7.00	7.00	7.50	8.00	7.00	6.00	6.00	6.00	6.00	5.50	5.50	5.50
1972	5.50	5.50	6.00	6.00	6.00	6.00	6.00	6.00	6.00	6.00	6.00	6.50
1973	7.50	8.50	9.50	9.50	10.00	10.00	10.00	11.00	12.00	11.50	11.50	11.80
1974	13.00	13.30	13.00	13.00	12.60	11.50	10.00	9.00	8.00	7.50	7.30	7.10
1975	7.10	7.50	8.00	9.00	9.00	9.00	8.30	8.50	9.00	9.80	9.50	9.00
<u>LAMBS Dollars per cwt.</u>												
1968	23.00	25.00	27.00	27.00	27.00	25.00	24.50	23.00	24.00	23.50	24.00	25.00
1969	27.00	29.00	29.00	29.00	28.50	28.00	28.00	28.00	27.00	28.00	28.00	27.00
1970	28.50	28.50	29.00	28.00	28.00	28.00	27.00	27.50	26.50	26.00	24.50	23.50
1971	23.50	24.00	27.50	28.00	28.00	29.00	29.00	28.00	26.00	26.00	26.00	26.00
1972	26.50	29.10	31.00	29.50	31.00	30.00	30.00	31.00	30.00	29.00	27.00	27.50
1973	30.00	33.50	36.50	34.50	34.50	36.50	36.00	44.00	36.00	35.00	36.00	36.50
1974	39.00	40.00	38.00	39.00	40.50	40.50	40.50	41.50	34.00	31.50	33.00	35.00
1975	34.00	37.00	40.00	43.00	46.00	44.00	40.00	38.00	40.00	41.50	43.00	47.00

WOOL PRODUCTION AND VALUE: Arizona, 1968-75

Year	All <u>1/</u> Sheep Shorn	Weight per Fleece	Shorn Wool Production	Average Price per Pound	Value
	<u>1,000 Head</u>	<u>Lbs.</u>	<u>1,000 Lbs.</u>	<u>Cents</u>	<u>1,000 Dol.</u>
1968	461	7.4	3,433	35	1,202
1969	489	7.3	3,570	36	1,285
1970	477	7.5	3,559	32	1,139
1971	497	7.6	3,772	15	566
1972	492	7.5	3,692	28	1,034
1973	473	7.4	3,511	69	2,423
1974	471	7.2	3,397	49	1,665
1975	498	6.5	3,230	<u>2/</u>	<u>2/</u>

1/ Includes shearing at commercial feeding yards.2/ Not available.

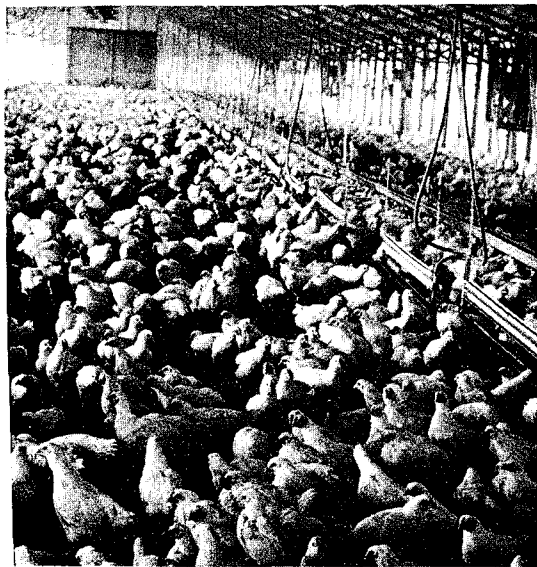
WOOL: Monthly average prices received by producers, Arizona, 1968-75

Year	Jan.	Feb.	Mar.	Apr.	May	June	July	Aug.	Sept.	Oct.	Nov.	Dec.
	<u>Cents per pound</u>											
1968	32	40	44	32	30	30	38	40	43	25	28	35
1969	43	42	44	30	31	33	34	32	28	28	34	38
1970	40	39	38	37	27	25	26	21	14	20	25	24
1971	<u>1/</u>	20	12	29	11	16	18	13	16	18	15	15
1972	23	21	27	28	27	27	38	39	26	<u>1/</u>	54	56
1973	70	61	68	72	72	72	<u>1/</u>	<u>1/</u>	77	55	56	<u>1/</u>
1974	83	79	62	32	32	40	51	47	25	60	41	44
1975	51	45	43	45	45	48	48	59	61	64	64	67

1/ Not available

Poultry

James E. Oaks, Agricultural Statistician



CHICKENS ON FARMS: Inventory by classes, Arizona, 1968-75 1/ 2/

Year	All Chickens	Hens and Pullets of Laying Age	All Hens and Pullets	Hens	All Pullets	Other Chickens
<u>1,000 Birds</u>						
1968	1,540	1,163	1,528	633	895	12
1969	1,450	1,116	1,438	612	826	12
1970	1,445	1,080	1,430	522	908	15
1971	1,076	830	1,066	391	675	10
1972	1,000	795	990	294	696	10
1973	1,040	810	1,034	395	639	6
1974	875	766	868	289	579	7
1975	765	650	760	289	471	5

1/ Does not include commercial broilers.

2/ January 1 for 1968 through 1970; December 1 for 1971 through 1975. *Revised figures*

LAYERS: Number by counties, Arizona, December 1, 1973, 1974 and 1975

County	Number of Layers		
	1973	1974	1975
<u>1,000 Birds</u>			
Maricopa	439	418	261
Pima	284	263	266
Yavapai	6	44	*
Pinal	15	18	*
All other counties	28	23	123
TOTAL	810	766	650

*Number too small to warrant quantitative estimate. Layers if any, are included in State total.

EGG PRODUCTION: Arizona, 1968-75

Year	Average Number Layers on Hand During Year	Eggs Per Layer Per Year	Total Eggs Produced
	<u>1,000 Layers</u>	<u>Eggs</u>	<u>Million Eggs</u>
1968	1,125	217	244.0
1969	1,065	213	227.0
1970	1,089	208	226.0
1971	977	200	195.0
1972	778	211	164.0
1973	741	208	154.0
1974	713	209	149.0
1975	668	238	159.0

EGGS: Monthly average prices received by producers, Arizona, 1968-75

Year	Jan.	Feb.	Mar.	Apr.	May	June	July	Aug.	Sept.	Oct.	Nov.	Dec.
<u>Cents per Dozen</u>												
1968	27	26	26	22	21	24	25	25	36	32	32	35
1969	37	33	34	29	22	24	33	31	36	35	46	50
1970	47	42	35	27	22	23	32	25	31	25	29	32
1971	29	26	25	26	24	24	20	26	25	22	22	28
1972	23	22	29	21	24	25	27	24	34	27	33	44
1973	51	45	48	48	44	45	43	70	62	55	56	60
1974	62	55	48	43	39	34	36	40	46	44	48	50
1975	50	51	52	50	47	41	37	41	39	43	51	51
	53	51	49	49	46	48	54	56	50	50	55	55

Honey & Beeswax

James F. Riggs, Agricultural Statistician

HONEY AND BEESWAX: Number of colonies, yield, production, and value, Arizona, 1968-75

Year	Colonies of Bees ^{1/}	Honey Yield per Colony	Honey		Beeswax	
			Production	Value	Production	Value
	<u>1,000 Colonies</u>	<u>Lbs.</u>	<u>1,000 Lbs.</u>	<u>1,000 Dol.</u>	<u>1,000 Lbs.</u>	<u>1,000 Dol.</u>
1968	83	57	4,731	530	90	50
1969	75	42	3,150	384	82	48
1970	59	45	2,655	345	69	38
1971	53	56	2,968	543	36	19
1972	53	51	2,703	776	32	17
1973	56	75	4,200	1,642	80	50
1974	55	60	3,300	1,472	53	51
1975	51	45	2,295	1,030	46	42

^{1/} Number of colonies on hand at the beginning of the main honey flow.

LAND OWNERSHIP AND ADMINISTRATION: Arizona, by counties

County	Forest Service	Bureau of Land Management	State of Arizona	Indian Reservation	Individual or Corporate	Other <u>1/</u>	Total
<u>1,000 Acres</u>							
Apache	480	130	705	4,447	1,235	154	7,151
Cochise	517	290	1,446	-	1,639	112	4,004
Coconino	3,319	646	1,042	4,401	1,617	862	11,887
Gila	1,717	59	28	1,143	92	1	3,040
Graham	395	779	494	1,000	282	-	2,950
Greenlee	780	172	145	-	102	-	1,199
Maricopa	730	1,848	583	268	1,585	891	5,905
Mohave	33	4,362	505	596	1,573	1,417	8,486
Navajo	488	97	327	4,214	1,194	23	6,343
Pima	386	373	957	2,488	813	897	5,914
Pinal	223	560	1,237	558	864	-	3,442
Santa Cruz	450	-	51	-	296	-	797
Yavapai	2,013	571	1,387	4	1,203	1	5,179
Yuma	-	2,255	427	230	543	2,936	6,391
TOTAL	11,531	12,142	9,334	19,349	13,038	7,294	72,688

1/ Includes land administered by National Park Service, Department of Defense, Bureau of Sport Fisheries and Wildlife, Bureau of Reclamation and other miscellaneous public land. (County, State and Federal)

ARIZONA AGRICULTURAL STATISTICS

MEAN MONTHLY TEMPERATURE (°F) ARIZONA, 1975 AND LONG- TERM AVERAGE 1/

STATIONS	JAN.	FEB.	MAR.	APR.	MAY	JUNE	JULY	AUG.	SEPT.	OCT.	NOV.	DEC.	ANNUAL
Casa Grande	49.1 50.6	50.7 54.9	M 59.7	60.6 67.7	71.7 76.2	82.5 84.8	89.6 91.1	88.4 88.9	M 83.6	69.3 72.1	57.8 59.5	50.5 51.8	67.0 70.1
Douglas	43.3 45.7	46.8 49.0	51.5 53.7	55.5 61.6	64.8 68.9	75.6 77.9	79.2 81.0	79.7 79.1	71.5 74.9	62.7 65.2	52.1 53.6	45.8 46.8	60.7 63.1
Flagstaff	27.7 27.9	27.6 30.5	33.2 34.2	36.2 42.1	47.5 50.1	57.1 58.2	65.9 65.6	63.5 63.6	57.9 57.5	46.5 47.0	37.3 36.4	29.2 29.8	44.1 45.3
Ft. Huachuca	47.8 46.4	48.2 49.8	51.2 54.6	54.2 61.7	65.7 69.7	76.1 77.8	76.8 78.5	78.9 76.2	71.0 73.2	64.3 65.3	54.0 54.8	47.8 48.2	61.3 63.0
Gila Bend	53.2 52.6	55.5 56.5	60.1 61.4	62.5 69.5	76.0 77.9	85.9 85.9	94.4 93.1	93.3 91.5	88.4 85.8	73.7 74.7	61.0 61.6	53.5 54.0	71.5 72.0
Grand Canyon	31.3 30.5	30.8 33.3	35.0 37.6	38.2 45.8	50.1 54.5	62.0 63.3	69.2 69.4	66.1 67.1	61.2 61.7	M 51.0	41.2 39.2	M 32.2	48.5 48.8
Kingman	41.0 43.4	42.7 46.8	46.5 51.5	49.2 58.8	63.9 66.0	75.9 75.3	81.9 82.1	80.2 80.0	75.6 74.1	61.4 62.8	49.8 52.0	43.8 44.2	59.3 61.4
McNary	31.3 30.3	30.0 32.3	35.4 35.9	39.3 43.9	49.9 51.4	59.9 59.4	65.2 64.8	64.8 62.9	58.3 58.0	50.8 49.0	39.8 38.5	33.7 32.3	46.5 46.6
Parker	51.8 52.4	54.8 57.3	59.5 62.5	62.8 70.3	77.2 78.6	86.4 86.4	94.6 93.7	92.4 92.4	87.7 86.4	72.6 74.6	60.3 61.2	54.7 53.2	71.2 72.4
Payson	38.2 36.2	39.8 38.8	43.0 42.5	45.4 49.4	57.5 56.6	66.3 65.3	74.7 73.7	73.5 71.4	67.3 65.7	57.1 55.0	45.6 43.6	40.5 37.4	54.1 53.0
Phoenix	52.3 51.2	54.0 55.1	59.0 59.7	62.6 67.7	77.1 76.3	86.6 84.6	94.3 91.2	91.9 89.1	86.2 83.8	72.9 72.2	60.9 59.8	54.8 52.5	71.1 70.3
Prescott	36.9 37.1	37.1 40.5	40.8 44.3	43.6 52.0	55.2 60.4	65.1 69.1	72.1 75.5	69.7 73.0	65.2 68.1	54.7 57.2	43.8 45.8	37.2 38.6	51.8 55.1
Safford	42.4 44.9	45.7 49.2	52.0 54.2	55.2 62.8	65.7 71.0	76.1 80.0	82.1 85.0	81.4 82.3	74.1 77.1	64.5 66.0	51.6 53.3	44.5 45.9	61.3 64.3
Tucson	49.8 51.1	60.7 53.7	55.3 57.9	57.9 65.8	69.8 73.9	80.5 82.6	84.2 86.5	85.8 84.2	80.0 80.7	69.5 70.6	59.3 59.0	53.0 52.2	67.2 68.2
Willcox	42.3 41.5	44.5 44.8	49.1 49.5	53.0 57.0	63.1 64.8	73.0 73.6	78.4 78.9	79.0 76.3	70.2 71.4	59.8 60.5	49.5 48.8	43.9 42.0	58.8 59.1
Window Rock	26.0 27.6	25.9 31.9	34.9 37.9	39.1 45.8	49.1 53.4	60.3 63.4	68.6 69.1	64.4 67.3	56.8 59.9	46.5 48.8	34.5 37.5	27.0 28.9	44.4 47.6
Winslow	26.3 32.6	37.5 39.1	43.4 44.8	47.5 53.7	58.8 62.7	70.5 71.8	77.9 78.3	75.6 76.1	67.3 69.5	54.9 57.3	40.4 43.2	32.7 33.8	52.7 55.3
Yuma	55.3 55.4	57.0 59.4	61.4 63.9	63.5 71.2	75.3 78.7	85.4 85.8	92.9 93.7	92.3 92.8	87.9 87.1	73.1 75.9	62.5 63.5	56.2 56.3	71.9 73.7

1/ Top row 1975, bottom row long-term average.

ARIZONA AGRICULTURAL STATISTICS

65

TOTAL PRECIPITATION (INCHES), ARIZONA, 1975 AND LONG-TERM AVERAGE ^{1/}

STATIONS	JAN.	FEB.	MAR.	APR.	MAY	JUNE	JULY	AUG.	SEPT.	OCT.	NOV.	DEC.	ANNUAL
Casa Grande	.08 .76	.65 .67	M .69	.60 .35	.00 .11	.00 .16	.15 .95	.21 1.56	M .70	.00 .63	1.19 .56	.70 .88	3.58 8.11
Douglas	.75 .71	.30 .37	.87 .56	.32 .23	.00 .09	.02 .44	4.08 3.56	.73 3.08	3.50 1.17	.53 .55	.28 .35	.38 .71	11.76 11.82
Flagstaff	1.76 1.89	1.90 1.47	2.92 1.83	2.20 1.33	1.16 .56	.05 .57	2.24 2.48	.74 2.65	1.89 1.68	.33 1.37	2.96 1.33	1.95 2.15	20.10 19.31
Ft. Huachuca	.46 1.40	.02 1.28	.85 1.08	.69 .45	T .30	.03 .80	4.04 3.95	.88 3.83	3.68 1.57	.06 .58	.94 1.00	.33 1.20	11.98 17.44
Gila Bend	.06 .62	.24 .44	.81 .65	.50 .30	.00 .10	.00 .04	.48 .76	.05 1.08	.69 .50	.05 .33	.74 .35	1.93 .59	5.55 5.76
Grand Canyon	1.25 1.35	1.01 1.28	3.06 1.47	1.13 1.00	.16 .54	.02 .48	2.61 1.50	.87 2.11	.81 1.21	.18 1.07	1.10 .82	M 1.59	12.20 14.42
Kingman	.35 1.36	.09 .79	1.21 1.07	.54 .57	.09 .27	.00 .15	1.69 .99	.26 1.51	1.73 .61	.25 .67	.89 .58	.11 .82	7.21 9.39
McNary	2.84 2.30	3.64 1.68	4.38 2.56	2.47 1.30	.50 .56	T .58	4.08 3.45	2.39 3.95	2.08 2.15	.34 2.05	2.64 1.57	1.61 2.75	26.97 24.90
Parker	.03 .53	.15 .32	.34 .52	.03 .22	.00 .03	.00 .01	T .30	.00 .56	.08 .26	.04 .29	.14 .32	.09 .46	.90 3.82
Payson	.85 2.03	1.33 1.48	2.75 1.85	2.12 1.03	.20 .47	.00 .42	3.44 2.52	1.05 3.48	1.20 2.01	.21 1.48	1.47 1.41	1.64 2.17	16.26 20.35
Phoenix	.02 .71	.33 .60	.63 .76	.43 .32	.00 .14	T .12	.38 .75	T 1.22	.82 .69	.23 .46	.55 .46	1.12 .82	4.51 7.05
Prescott	.39 1.70	.50 1.36	1.16 1.36	.84 .92	.05 .35	T .42	3.94 3.14	.61 3.38	1.19 1.44	.30 .99	2.41 1.17	.81 1.81	12.20 18.04
Safford	.42 .69	.06 .41	.40 .59	.26 .24	T .08	T .21	1.82 1.90	.06 1.44	1.97 1.12	.39 .61	.36 .35	.35 .79	6.09 8.43
Tucson	.36 .77	.13 .70	.95 .64	.27 .35	.11 .14	.00 .20	2.38 2.38	.32 2.34	1.26 1.37	T .66	.34 .56	.52 .94	6.64 11.05
Willcox	.86 .78	T .57	.89 .59	.35 .27	T .13	T .43	2.36 2.60	.10 2.66	4.50 1.18	.02 .59	.45 .39	.29 1.00	9.82 11.19
Window Rock	1.09 .90	1.12 .94	1.61 .86	.59 .66	.09 .57	.00 .51	3.87 2.06	.62 2.26	2.95 1.25	.00 .93	.80 .70	.81 .96	13.55 12.61
Winslow	.41 .42	.42 .38	.73 .44	.29 .36	.35 .28	T .28	1.27 1.18	.59 1.50	2.54 .85	T .69	.38 .36	.68 .59	7.66 7.33
Yuma	T .38	.01 .27	.21 .21	.26 .11	.00 .03	.00 .00	.10 .18	T .44	.15 .22	.00 .27	.03 .22	.44 .34	1.20 2.67

^{1/} Top row 1975, bottom row long-term average.

ARIZONA AGRICULTURAL STATISTICS

RESERVOIR STORAGE (Thousand Acre Feet), Arizona, March 1, 1976

Basin or Stream	Reservoir	Usable Capacity	U S A B L E S T O R A G E		
			This Year	Last Year	Average 1/
<u>GILA RIVER DRAINAGE</u>					
Agua Fria	Lake Pleasant	157.6	50.6	56.4	61.0
Granite	Watson Lake	4.7	4.5	1.5	3.1
Granite	Willow Creek	6.1	2.6	.9	2.9
Gila	San Carlos	1,093.0	131.7	252.2	190.5
Verde	Bartlett & Horseshoe	317.7	160.7	47.8	145.1
Salt	Roosevelt, Apache, Canyon & Saguaro	1,755.0	1,129.4	1,040.0	1,109.0
<u>COLORADO RIVER DRAINAGE</u>					
Colorado	Lake Havasu	619.4	537.5	551.0	539.2
Colorado	Lake Mohave	1,810.0	1,680.7	1,657.0	1,689.0
Colorado	Lake Mead	26,159.0	20,528.0	19,928.0	17,224.0
Colorado	Lake Powell	25,002.0	19,838.0	17,199.0	7,347.0
Little Colorado	Lyman	30.6	21.2	11.6	13.4
Little Colorado	Show Low Lake	5.1	1.8	.8	2.0

1/ Based on 15-year period, 1958-72.

WATER SUPPLY: Water supplies should be adequate this year in Arizona if normal precipitation continues throughout the season. Warm rains and melting snow resulted in the heaviest February runoff since 1937 on Tonto Creek and since 1941 on the Verde River. The Salt and Gila Rivers also greatly exceeded their normal flows for February.

SNOW COVER: Snow cover ranges from 34% above average on the Verde Watershed to 27% below on the Gila, with the Salt and Little Colorado near normal. Most of the snow below 7000' has melted, but above 7500' (with the exception of the Gila Watershed) there is a good snow pack. The heaviest relative snow cover is found on Mormon Mountain and on the "Rim" at Baker Butte where conditions are twice normal.

PRECIPITATION: Extremely heavy precipitation occurred during February with amounts of 2 to 3 times normal common on the Verde and Salt Watersheds. Almost all of this precipitation occurred during the first half of the month. Total winter precipitation since November 1 has been near normal on the Salt and Little Colorado Watersheds, 20% above average on the Verde, and 15% below on the Gila.

SOIL MOISTURE: Rain and melting snow has resulted in good soil moisture at the lower and intermediate elevations. Good runoff can be expected from normal precipitation in March and April.

RESERVOIR STORAGE: Salt River Project reservoirs, now containing 62% of capacity, are above average for this date. The net increase in storage of 260,000 acre-feet is five times average for February. San Carlos and Lake Pleasant Reservoirs also received good inflow, but are still somewhat below average.

Source: U. S. Department of Agriculture, Soil Conservation Service.

ARIZONA AGRICULTURAL STATISTICS

USUAL PLANTING AND HARVESTING DATES: By crops and principal producing areas, Arizona 1975

Crop	1975 Harvested Acreage	Usual Planting Dates	Usual Harvesting Dates			Principal Producing Counties
			Begins	Most Active	Ends	
ALL SORGHUMS	165,000	May 1-July 1	July 5	July 20-Nov. 25	Dec. 15	Cochise, Graham, Maricopa, Pima, Pinal, Yuma
BARLEY	115,000	Oct. 1-Mar. 1	May 20	May 25-June 30	July 5	Cochise, Graham, Maricopa, Pima, Pinal, Yuma
ALL WHEAT	320,000	Nov. 15-Feb. 1	May 20	May 25-June 10	June 25	Cochise, Graham, Maricopa, Pima, Pinal, Yuma
SAFFLOWER	44,500	Dec. 1-Feb. 1	July 5	July 15-Aug. 10	Aug. 20	Maricopa, Pinal, Yuma
SUGARBEETS	17,000					
Spring		Sept. 1-Nov. 1	May 1	July 15	Aug. 1	Maricopa, Pinal, Yuma
Fall		Mar. 1-Mar. 31	Oct. 1	Oct. 20	Nov. 15	Cochise
ALL COTTON	298,000	Mar. 15-Apr. 25	Sept. 15	Oct. 25-Dec. 5	Jan. 15	Cochise, Graham, Greenlee, Maricopa, Mohave, Pima, Pinal, Yuma
HAY, ALFALFA	215,000		Mar. 15		Dec. 1	Cochise, Graham, Maricopa, Pinal, Yuma
POTATOES	7,200	Jan. 1-Jan. 31	April 15	May 15-June 15	July 15	Maricopa
BROCCOLI	600	Aug. 5-Oct. 15	Nov. 1	Dec. 1-Feb. 28	Mar. 20	Maricopa, Yuma
CABBAGE	700	Aug. 1-Mar. 15	Oct. 20	Nov. 15-May 31	June 30	Maricopa, Yuma
CANTALOUPS	7,800					
Spring		Feb. 1-Apr. 15	May 20	June 10-July 10	July 30	Maricopa, Pinal, Yuma
Fall		July 15-Sept. 10	Sept. 20	Nov. 1	Nov. 30	Maricopa, Yuma
CARROTS	1,500	Aug. 20-Mar. 1	Oct. 10	Jan. 1-June 30	July 30	Maricopa
CAULIFLOWER	1,000	Sept. 1-Nov. 1	Dec. 5	Jan. 1-Feb. 15	Mar. 30	Maricopa, Yuma
HONEYDEWS	1,070	Mar. 1-Sept. 1	June 15	July 1-Nov. 30	Dec. 15	Maricopa, Yuma
LETTUCE, YUMA	25,000	Aug. 15-Dec. 1	Nov. 1	Dec. 1-Mar. 31	Apr. 25	Yuma
LETTUCE, OTHER	14,200					
Other Spring		Nov. 1-Feb. 15	Mar. 10	Apr. 15-Apr. 25	June 20	Cochise, Maricopa, Pima, Pinal
Other Fall		July 20-Sept. 15	Sept. 15	Oct. 20-Dec. 15	Jan. 25	Cochise, Maricopa, Pima, Pinal
DRY ONIONS	1,400	Oct. 12-Dec. 5	May 1	May 20-June 15	July 15	Maricopa, Yuma
WATERMELONS	2,900	Jan. 20-Mar. 15	June 1	July 15	Aug. 1	Maricopa, Pinal, Yuma

PRINCIPAL ARIZONA CROPS IN 1975: Preliminary estimated acreage by counties and production in the State

CROP	STATE TOTAL	Apache	Cochise	Coconino	Gila	Graham	Greenlee	Maricopa	Mohave	Navajo	Pima	Pinal	Santa Cruz	Yavapai	Yuma
Alfalfa: Acres cut for hay	215,000	2,600	9,600	400	400	8,100	1,800	96,000	4,700	4,800	2,100	16,000	1,000	1,500	66,000
Hay production, tons	1,505,000														
Cotton: Upland, acres harvested	268,000		10,750		*	3,450	*	112,300	1,050		11,500	99,200	*	*	29,500
Bales (480 lbs. net wt.),															
1975 crop	560,000														
American Pima, acres harvested	30,000		2,800		*	5,800		5,300	*		2,650	8,450	*	*	5,000
Bales (480 lbs. net wt.),															
1975 crop	37,500														
Barley: Acres harvested for grain	115,000	*	6,200	*	*	13,600	*	50,000	*	*	7,400	32,000	500	*	4,500
Grain production, tons	207,000														
Corn: Acres harvested for grain	12,000	2,500	500	1,000	*	*	*	1,400	*	4,000	500	*	*	500	1,000
Grain production, tons ^{1/}	11,090														
Sorghums: Acres harvested															
for grain	165,000	500	61,000	*		33,300	800	35,000	400	600	8,800	12,000	400	*	12,000
Grain production, tons ^{1/}	314,160														
Wheat: Acres harvested for grain	320,000	*	51,300	*	*	7,400	1,400	89,000	*	600	12,400	73,400	*	500	83,300
Grain production, tons	681,600														
Sugarbeets: Acres harvested	17,000		4,330			360		4,370				4,890			3,050
Production, tons	366,000														
Safflower: Acres harvested	44,500							14,800				24,700			5,000
Production, tons	54,500														
Vegetables: Acres harvested ^{2/}	63,370		900					21,890			2,780	4,860			32,940
Production, commercial cwt.	12,214,000														
Grapefruit: Total acres	11,530							6,940			*	430			4,160
Production, 1974-75 crop, ctns.	5,540,000														
Oranges: Total acres	31,820							15,500			*	570			15,750
Production, 1974-75 crop, ctns. ^{3/}	11,160,000														
Lemons: Total acres	24,240							3,040			*	*			21,200
Production, 1974-75 crop, ctns.	14,400,000														
Other Crops: Acres harvested ^{4/}	59,360	600	10,100	400	500	650	450	16,200	400	1,700	4,750	6,700	300	970	15,640
TOTAL: Acres harvested	1,376,820	6,600	157,480	2,000	1,100	72,860	5,000	471,740	6,950	11,900	52,880	283,300	2,300	3,670	299,040

^{1/} Does not include grain from acreage harvested for silage and forage.
^{2/} County acreages based on data from Arizona Fruit and Vegetable Standardization Service and County Agents.
^{3/} Includes tangerines and tangerine types.
^{4/} Includes miscellaneous fruits, vegetables and field crops not listed above. Does not include pasture.
 *Acres harvested too small to warrant quantitative estimate. Acres, if any, are included in State totals.