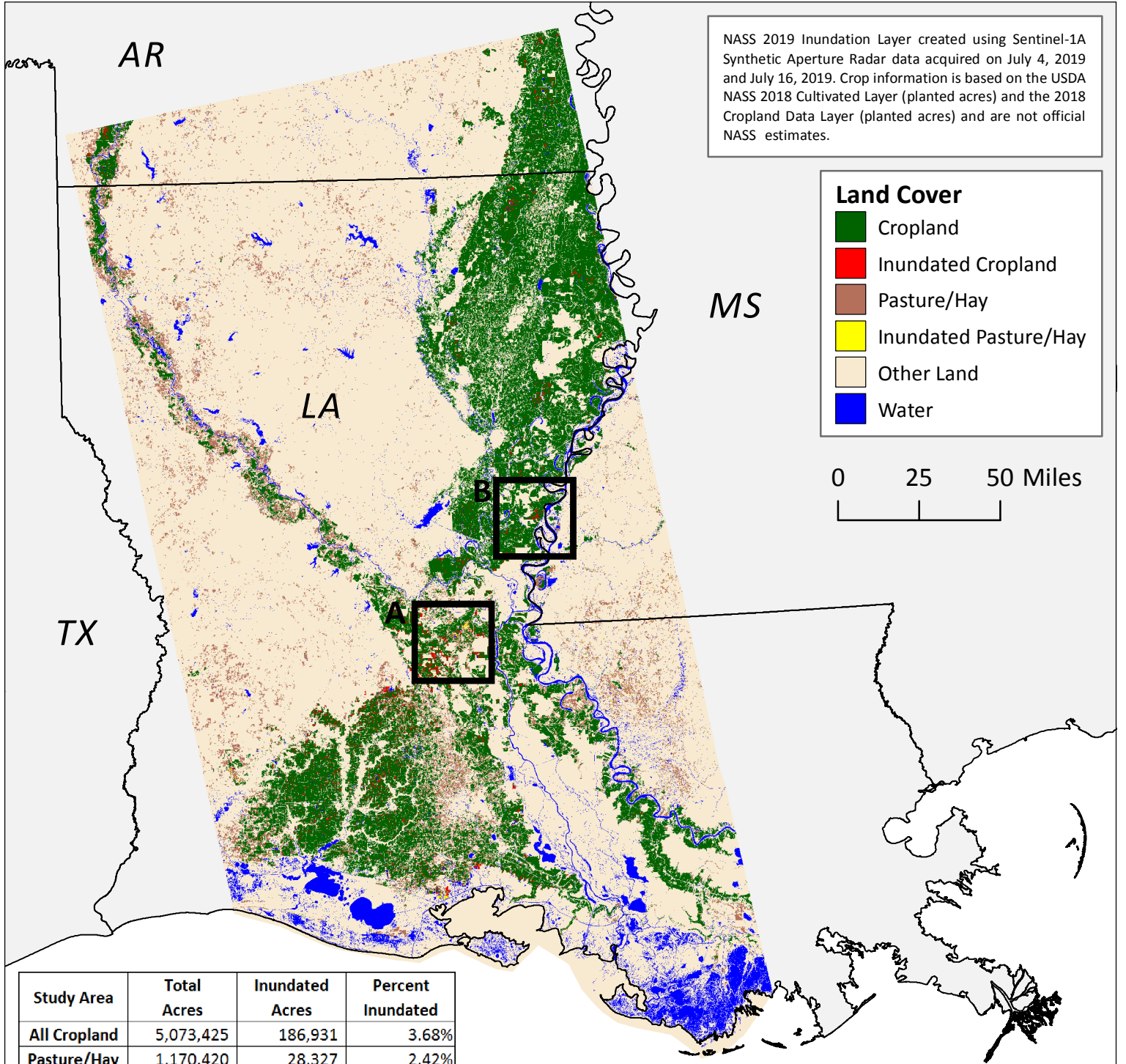
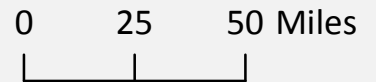


NASS 2019 Inundation Layer created using Sentinel-1A Synthetic Aperture Radar data acquired on July 4, 2019 and July 16, 2019. Crop information is based on the USDA NASS 2018 Cultivated Layer (planted acres) and the 2018 Cropland Data Layer (planted acres) and are not official NASS estimates.

Land Cover

- Cropland
- Inundated Cropland
- Pasture/Hay
- Inundated Pasture/Hay
- Other Land
- Water



Study Area	Total Acres	Inundated Acres	Percent Inundated
All Cropland	5,073,425	186,931	3.68%
Pasture/Hay	1,170,420	28,327	2.42%

