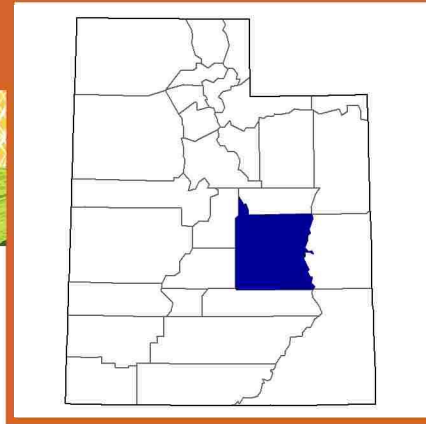
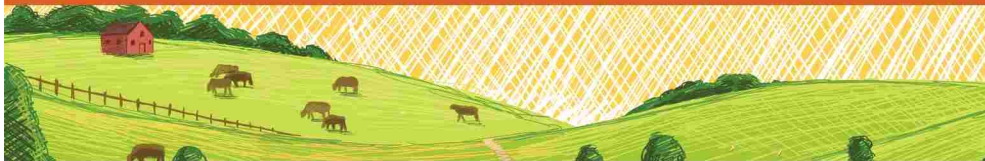




Emery County, Utah Farms with American Indian or Alaska Native Producers^a

Data not available at this geographic level for farms with American Indian or Alaska Native Producers.

^a This race alone or in combination with other races.



Emery County, Utah Farms with Asian Producers^a

Data not available at this geographic level for farms with Asian Producers.

^a This race alone or in combination with other races.



Emery County, Utah Farms with Black or African American Producers^a

Data not available at this geographic level for farms with Black or African American Producers.

^a This race alone or in combination with other races.



Emery County, Utah Farms with Native Hawaiian or Other Pacific Islander Producers^a

Data not available at this geographic level for farms with Native Hawaiian or Other Pacific Islander Producers.

^a This race alone or in combination with other races.



Emery County, Utah Farms with White Producers^a

Data not available at this geographic level for farms with White Producers.

^a This race alone or in combination with other races.



Emery County, Utah Farms with Hispanic, Latino, or Spanish Producers

Data not available at this geographic level for farms with Hispanic, Latino, or Spanish Producers.



Emery County, Utah Farms with Female Producers

Total and Per Farm Overview, 2017

	Farms with Female Producers	All Farms
Number of farms	297	504
Land in farms (acres)	54,224	133,699
Average size of farm (acres)	183	265
Total	(\$)	(\$)
Market value of products sold	9,741,000	15,354,000
Government payments	335,000	460,000
Farm-related income	307,000	360,000
Total farm production expenses	9,392,000	15,519,000
Net cash farm income	991,000	655,000
Per farm average	(\$)	(\$)
Market value of products sold	32,799	30,465
Government payments (average per farm receiving)	9,842	6,385
Farm-related income	4,516	3,242
Total farm production expenses	31,622	30,792
Net cash farm income	3,338	1,299

Share of Sales by Type (%)

Crops	29
Livestock, poultry, and products	71

Land in Farms by Use (%) ^b

Cropland	40
Pastureland	39
Woodland	9
Other	12

Land Use Practices (% of farms)

No till	9
Reduced till	6
Intensive till	13
Cover crop	14

Farms by Value of Sales

	Number	Percent ^b
Less than \$2,500	113	38
\$2,500 to \$4,999	25	8
\$5,000 to \$9,999	56	19
\$10,000 to \$24,999	53	18
\$25,000 to \$49,999	11	4
\$50,000 to \$99,999	10	3
\$100,000 or more	29	10
Total	297	100

Farms by Size

	Number	Percent ^b
1 to 9 acres	33	11
10 to 49 acres	124	42
50 to 179 acres	76	26
180 to 499 acres	32	11
500 to 999 acres	16	5
1,000 + acres	16	5
Total	297	100

2017 CENSUS OF AGRICULTURE Race/Ethnicity/Gender Profile

Market Value of Agricultural Products Sold

	Sales (\$1,000)	No. of Farms
Total	9,741	297
Crops	2,786	141
Grains, oilseeds, dry beans, dry peas	(D)	12
Tobacco	-	-
Cotton and cottonseed	-	-
Vegetables, melons, potatoes, sweet potatoes	(D)	4
Fruits, tree nuts, berries	70	10
Nursery, greenhouse, floriculture, sod	-	-
Cultivated Christmas trees, short rotation woody crops	-	-
Other crops and hay	2,243	133
Livestock, poultry, and products	6,956	205
Poultry and eggs	(D)	35
Cattle and calves	5,324	149
Milk from cows	(D)	2
Hogs and pigs	44	15
Sheep, goats, wool, mohair, milk	503	43
Horses, ponies, mules, burros, donkeys	186	45
Aquaculture	-	-
Other animals and animal products	45	14

Total Producers ^c

315

Age	
<35	45
35 – 64	191
65 and older	79
Race	
American Indian/Alaska Native	1
Asian	-
Black/African American	-
Native Hawaiian/Pacific Islander	-
White	314
More than one race	-
Primary occupation	
Farming	88
Other	227
Days worked off farm	
None	96
1 to 199	94
200 +	125
Other characteristics	
Hispanic/Latino/Spanish	2
With military service	-
New and beginning farmers	112
<i>Average age (years)</i>	52.9

Top Crops in Acres ^d

Forage (hay/haylage), all	11,149
Corn for grain	(D)
Corn for silage	(D)
Vegetables harvested, all	(D)
Wheat for grain, all	(D)

Percent of farms that:

Have internet access	88
Farm organically	-
Sell directly to consumers	9
Hire farm labor	21
Are family farms	98

Livestock Inventory (Dec 31, 2017)

Broilers and other meat-type chickens	36
Cattle and calves	10,978
Goats	698
Hogs and pigs	246
Horses and ponies	955
Layers	1,098
Pullets	96
Sheep and lambs	4,984
Turkeys	13

Demographic Data in the Census of Agriculture

The agriculture census is a complete count of U.S. farms and ranches and the people who operate them. Demographic information is available at national, state, and county levels, and for classes of farm and congressional districts. Results from the 2017 Census and earlier are available through the searchable database Quick Stats, the new Census Data Query Tool, downloadable PDF reports, maps, and topic-specific Highlights and Profiles.

See also the video "What's New in the 2017 Census?" (www.nass.usda.gov/Newsroom/VideoFeatures/index.php).

See 2017 Census of Agriculture, U.S. Summary and State Data, for complete footnotes, explanations, definitions, commodity descriptions, and methodology.

^a This race alone or in combination with other races. ^b May not add to 100% due to rounding. ^c Data collected for a maximum of four producers per farm.

^d Crop commodity names may be shortened; see full names at www.nass.usda.gov/go/cropnames.pdf. ^e Position below the line does not indicate rank.

(D) Withheld to avoid disclosing data for individual operations. (NA) Not available. (Z) Less than half of the unit shown. (-) Represents zero.