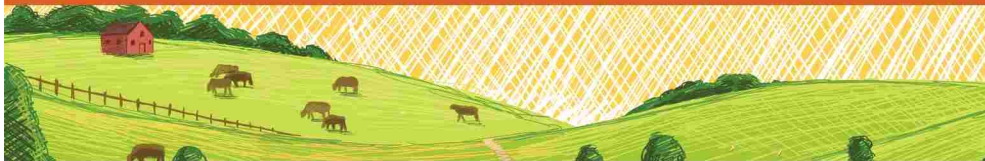




Bates County, Missouri Farms with American Indian or Alaska Native Producers^a

Data not available at this geographic level for farms with American Indian or Alaska Native Producers.

^a This race alone or in combination with other races.



Bates County, Missouri Farms with Asian Producers^a

Data not available at this geographic level for farms with Asian Producers.

^a This race alone or in combination with other races.



Bates County, Missouri Farms with Black or African American Producers^a

Data not available at this geographic level for farms with Black or African American Producers.

^a This race alone or in combination with other races.



Bates County, Missouri Farms with Native Hawaiian or Other Pacific Islander Producers^a

Data not available at this geographic level for farms with Native Hawaiian or Other Pacific Islander Producers.

^a This race alone or in combination with other races.



Bates County, Missouri Farms with White Producers^a

Data not available at this geographic level for farms with White Producers.

^a This race alone or in combination with other races.



Bates County, Missouri Farms with Hispanic, Latino, or Spanish Producers

Data not available at this geographic level for farms with Hispanic, Latino, or Spanish Producers.



Bates County, Missouri Farms with Female Producers

Total and Per Farm Overview, 2017

	Farms with Female Producers	All Farms
Number of farms	633	1,160
Land in farms (acres)	199,735	459,524
Average size of farm (acres)	316	396
Total	(\$)	(\$)
Market value of products sold	55,617,000	159,792,000
Government payments	2,192,000	4,732,000
Farm-related income	2,619,000	5,570,000
Total farm production expenses	46,080,000	130,086,000
Net cash farm income	14,349,000	40,009,000
Per farm average	(\$)	(\$)
Market value of products sold	87,863	137,752
Government payments (average per farm receiving)	8,120	8,303
Farm-related income	10,072	11,653
Total farm production expenses	72,796	112,143
Net cash farm income	22,667	34,490

Share of Sales by Type (%)

Crops	74
Livestock, poultry, and products	26

Land in Farms by Use (%) ^b

Cropland	57
Pastureland	29
Woodland	8
Other	6

Land Use Practices (% of farms)

No till	8
Reduced till	9
Intensive till	11
Cover crop	5

Farms by Value of Sales

	Number	Percent ^b
Less than \$2,500	227	36
\$2,500 to \$4,999	49	8
\$5,000 to \$9,999	63	10
\$10,000 to \$24,999	85	13
\$25,000 to \$49,999	70	11
\$50,000 to \$99,999	58	9
\$100,000 or more	81	13
Total	633	100

Farms by Size

	Number	Percent ^b
1 to 9 acres	45	7
10 to 49 acres	190	30
50 to 179 acres	182	29
180 to 499 acres	127	20
500 to 999 acres	51	8
1,000 + acres	38	6
Total	633	100

2017 CENSUS OF AGRICULTURE Race/Ethnicity/Gender Profile

Market Value of Agricultural Products Sold

	Sales (\$1,000)	No. of Farms
Total	55,617	633
Crops	41,313	302
Grains, oilseeds, dry beans, dry peas	38,711	117
Tobacco	-	-
Cotton and cottonseed	-	-
Vegetables, melons, potatoes, sweet potatoes	(D)	11
Fruits, tree nuts, berries	460	22
Nursery, greenhouse, floriculture, sod	(D)	4
Cultivated Christmas trees, short rotation woody crops	-	-
Other crops and hay	1,315	205
Livestock, poultry, and products	14,304	382
Poultry and eggs	(D)	41
Cattle and calves	13,817	326
Milk from cows	(D)	1
Hogs and pigs	10	10
Sheep, goats, wool, mohair, milk	193	41
Horses, ponies, mules, burros, donkeys	66	16
Aquaculture	-	-
Other animals and animal products	(D)	13

Total Producers ^c

Age	668
<35	101
35 – 64	333
65 and older	234
Race	
American Indian/Alaska Native	5
Asian	-
Black/African American	-
Native Hawaiian/Pacific Islander	-
White	660
More than one race	3
Primary occupation	
Farming	242
Other	426
Days worked off farm	
None	295
1 to 199	101
200 +	272
Other characteristics	
Hispanic/Latino/Spanish	9
With military service	9
New and beginning farmers	193
<i>Average age (years)</i>	<i>56.5</i>

Top Crops in Acres ^d

Soybeans for beans	44,335
Forage (hay/haylage), all	28,420
Corn for grain	25,665
Wheat for grain, all	5,696
Corn for silage	619

Percent of farms that:

Have internet access	72
Farm organically	(Z)
Sell directly to consumers	4
Hire farm labor	24
Are family farms	96

Livestock Inventory (Dec 31, 2017)

Broilers and other meat-type chickens	138
Cattle and calves	37,908
Goats	348
Hogs and pigs	74
Horses and ponies	816
Layers	1,271
Pullets	356
Sheep and lambs	1,307
Turkeys	34

Demographic Data in the Census of Agriculture

The agriculture census is a complete count of U.S. farms and ranches and the people who operate them. Demographic information is available at national, state, and county levels, and for classes of farm and congressional districts. Results from the 2017 Census and earlier are available through the searchable database Quick Stats, the new Census Data Query Tool, downloadable PDF reports, maps, and topic-specific Highlights and Profiles. See also the video "What's New in the 2017 Census?" (www.nass.usda.gov/Newsroom/VideoFeatures/index.php).

See 2017 Census of Agriculture, U.S. Summary and State Data, for complete footnotes, explanations, definitions, commodity descriptions, and methodology.

^a This race alone or in combination with other races. ^b May not add to 100% due to rounding. ^c Data collected for a maximum of four producers per farm.

^d Crop commodity names may be shortened; see full names at www.nass.usda.gov/go/cropnames.pdf. ^e Position below the line does not indicate rank.

(D) Withheld to avoid disclosing data for individual operations. (NA) Not available. (Z) Less than half of the unit shown. (-) Represents zero.