



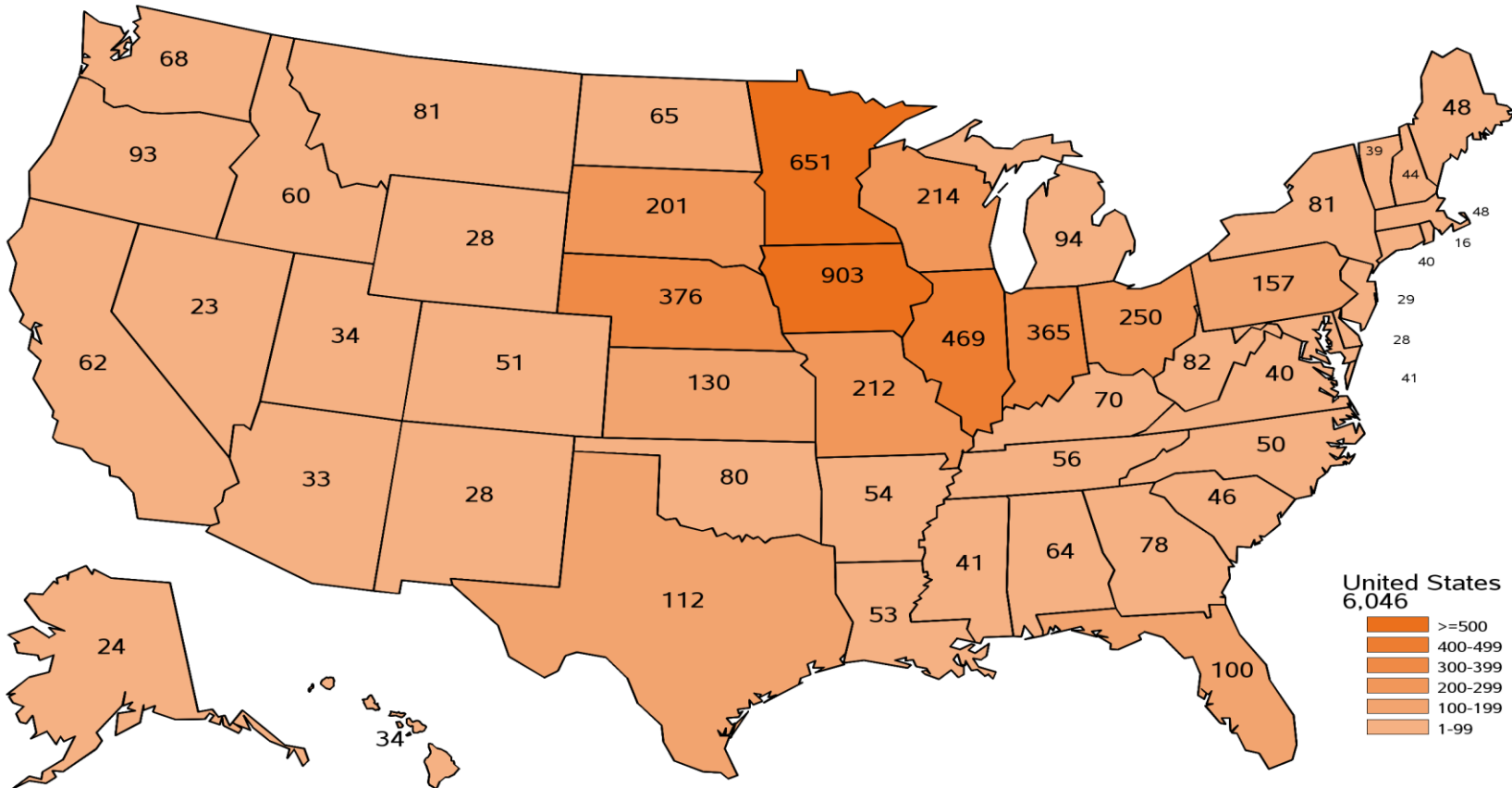
December Quarterly Hogs and Pigs

Agricultural Statistics Board Briefing

Travis Averill, Chief
Livestock Branch

2024 December Hogs and Pigs Survey

Sample Size





U.S. Hogs and Pigs Revisions



Survey	Item	Initial Estimate (1,000 head)	Current Revision (1,000 head)	Net Revision (1,000 head)	Current Estimate (1,000 head)
September 1, 2023	All Hogs and Pigs	74,319	-195	1,619	75,938
	Pig Crop	34,229	-161	905	35,134
June 1, 2024	All Hogs and Pigs	74,486	-410	315	74,801
	Pig Crop	34,021	-462	-360	33,661
September 1, 2024	All Hogs and Pigs	76,480	-385	-385	76,095
	Pig Crop	35,030	407	407	35,437



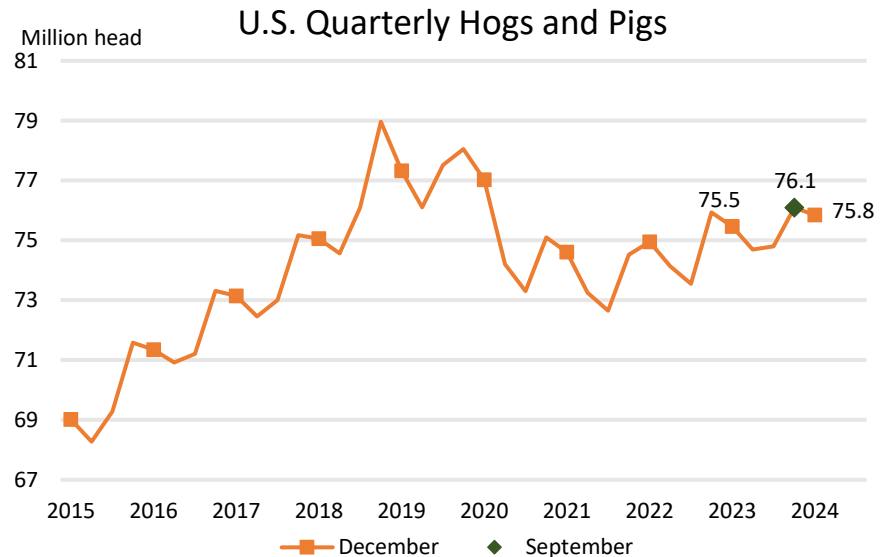
U.S. Hogs and Pigs December 1



	2023 (1,000 head)	2024	% Change from Previous Year	
All Hogs and Pigs	75,461	75,845	↑	0.5
Breeding Hogs	5,999	6,004	↑	0.1
Market Hogs	69,463	69,841	↑	0.5

Top 5 States
Inventory
(1,000 head)

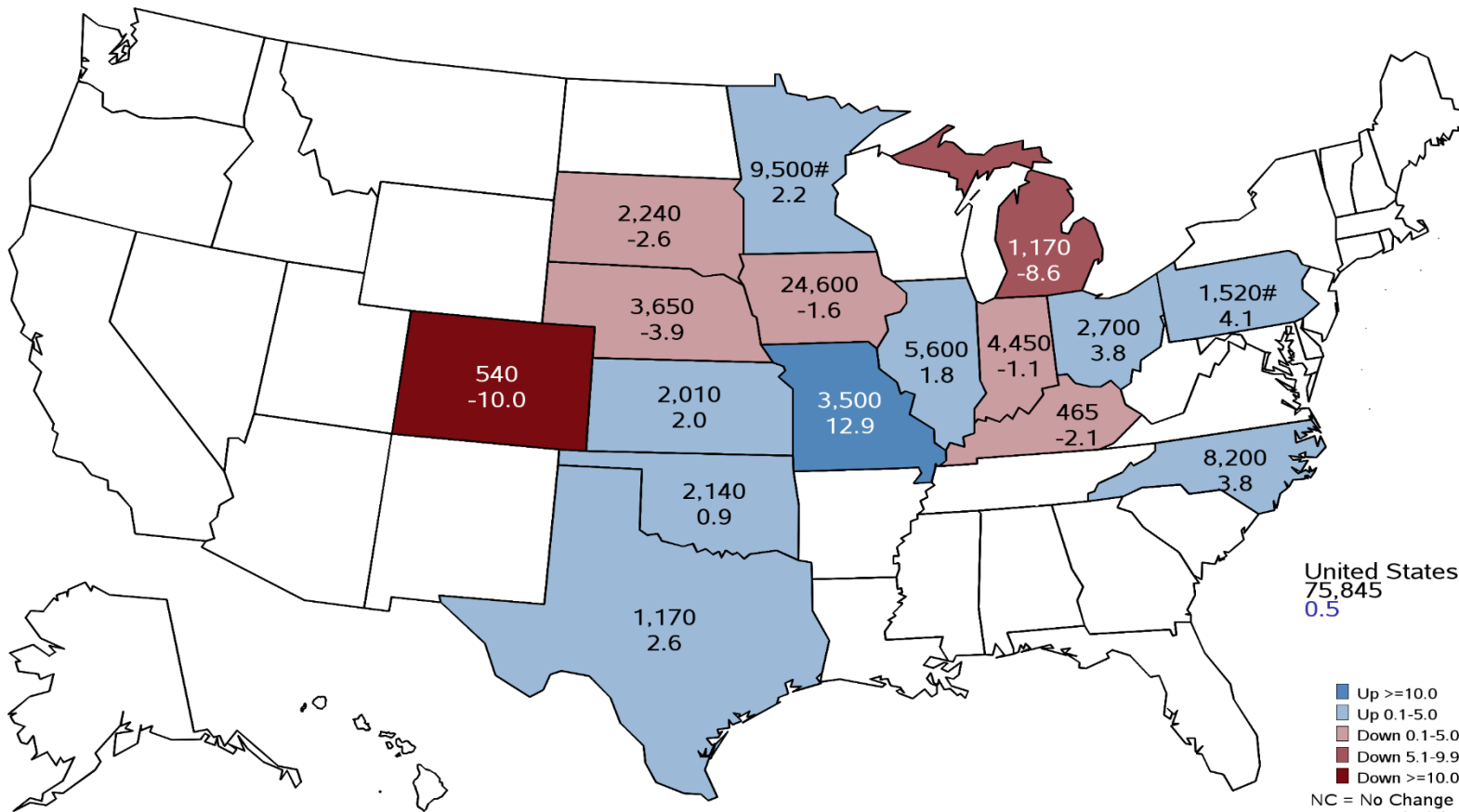
Iowa	24,600
Minnesota	9,500
North Carolina	8,200
Illinois	5,600
Indiana	4,450





December 1, 2024 Hogs and Pigs Inventory

(1,000) Head and Percent Change from Previous Year



United States
75,845
0.5

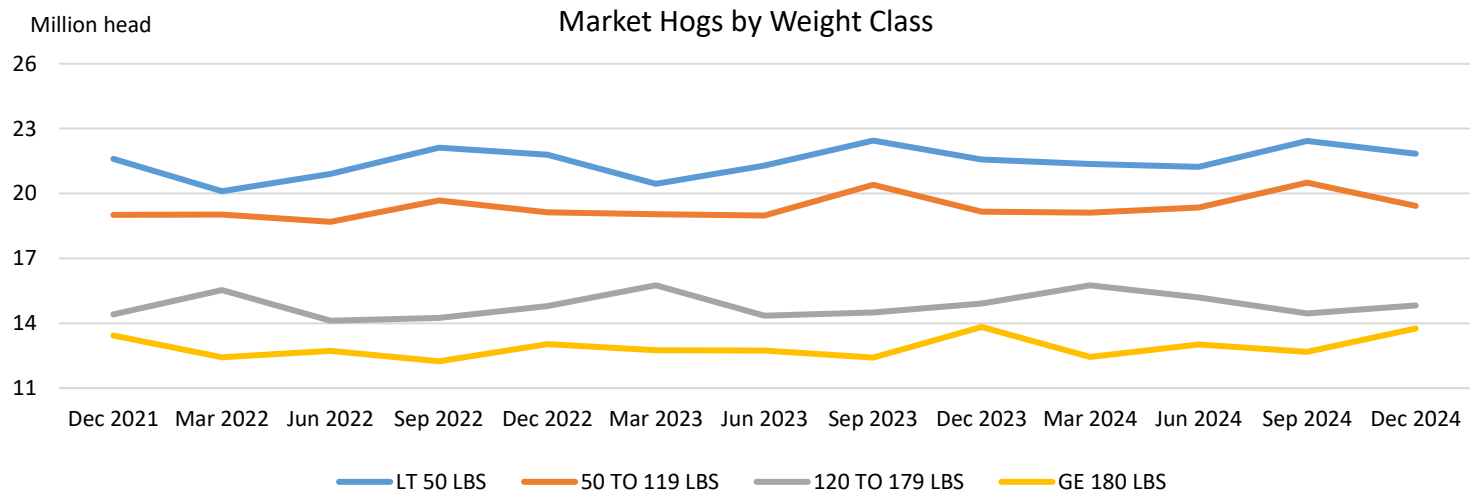
- Up >=10.0
- Up 0.1-5.0
- Down 0.1-5.0
- Down 5.1-9.9
- Down >=10.0
- NC = No Change
- # = Record High
- & = Record Low



U.S. Hogs and Pigs December 1

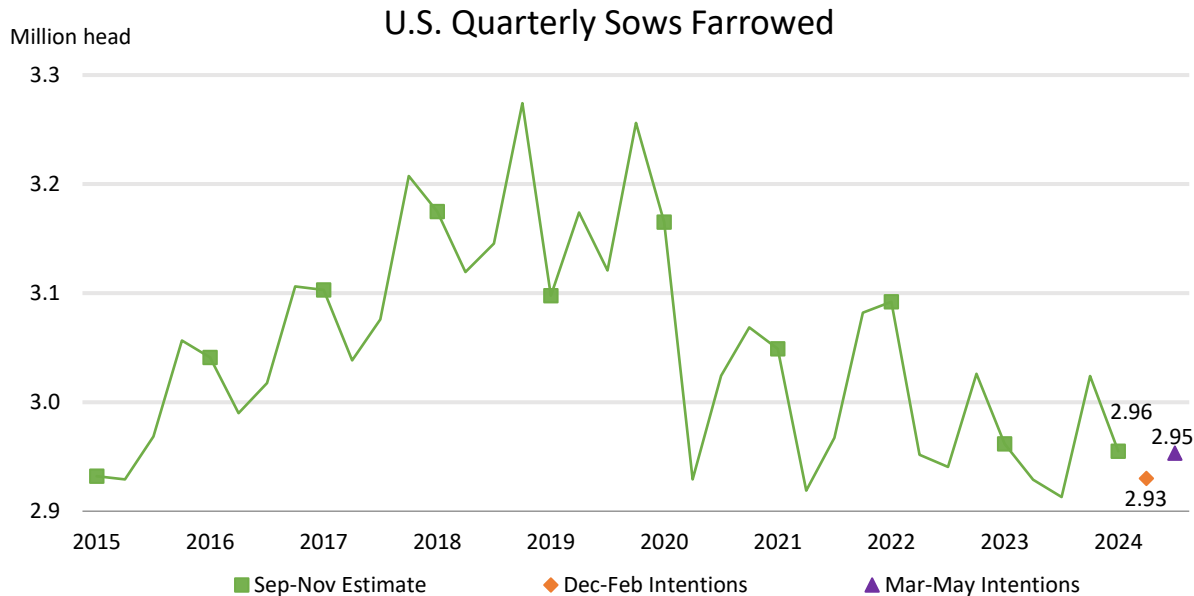


	2023 (1,000 head)	2024	% Change from Previous Year	
Market Hogs	69,463	69,841	↑	0.5
Less than 50 lbs	21,571	21,834	↑	1.2
50 – 119 lbs	19,154	19,426	↑	1.4
120 – 179 lbs	14,908	14,824	↓	0.6
180 lbs or more	13,829	13,757	↓	0.5



U.S. Hogs and Pigs December 1

	2023	2024	2025	% Change from Previous Year
	(1,000 head)			
Sows Farrowed	2,962	2,955		↓ 0.2
Intentions				
Dec – Feb		2,929	2,930	↑ 0.0
Mar – May		2,913	2,953	↑ 1.4

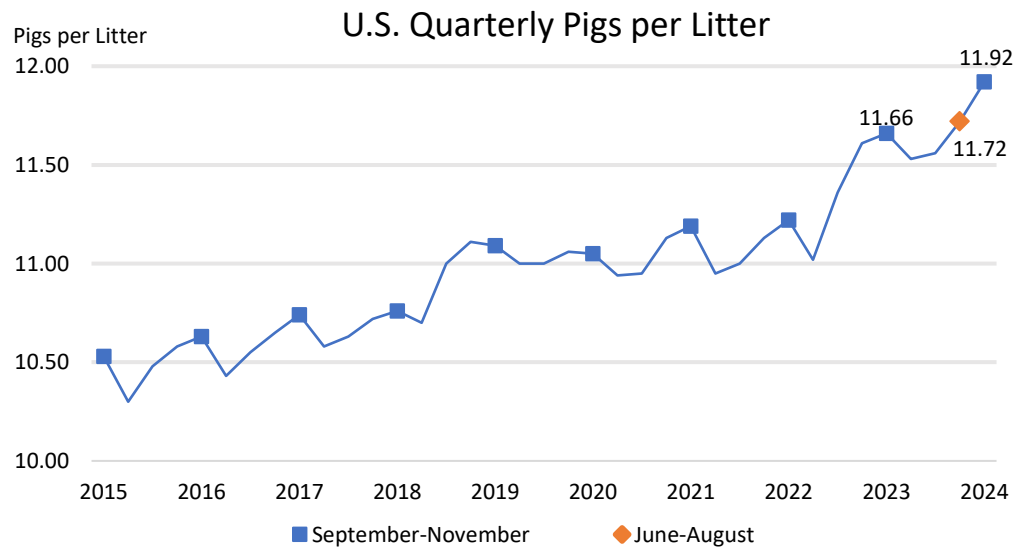




U.S. Hogs and Pigs December 1

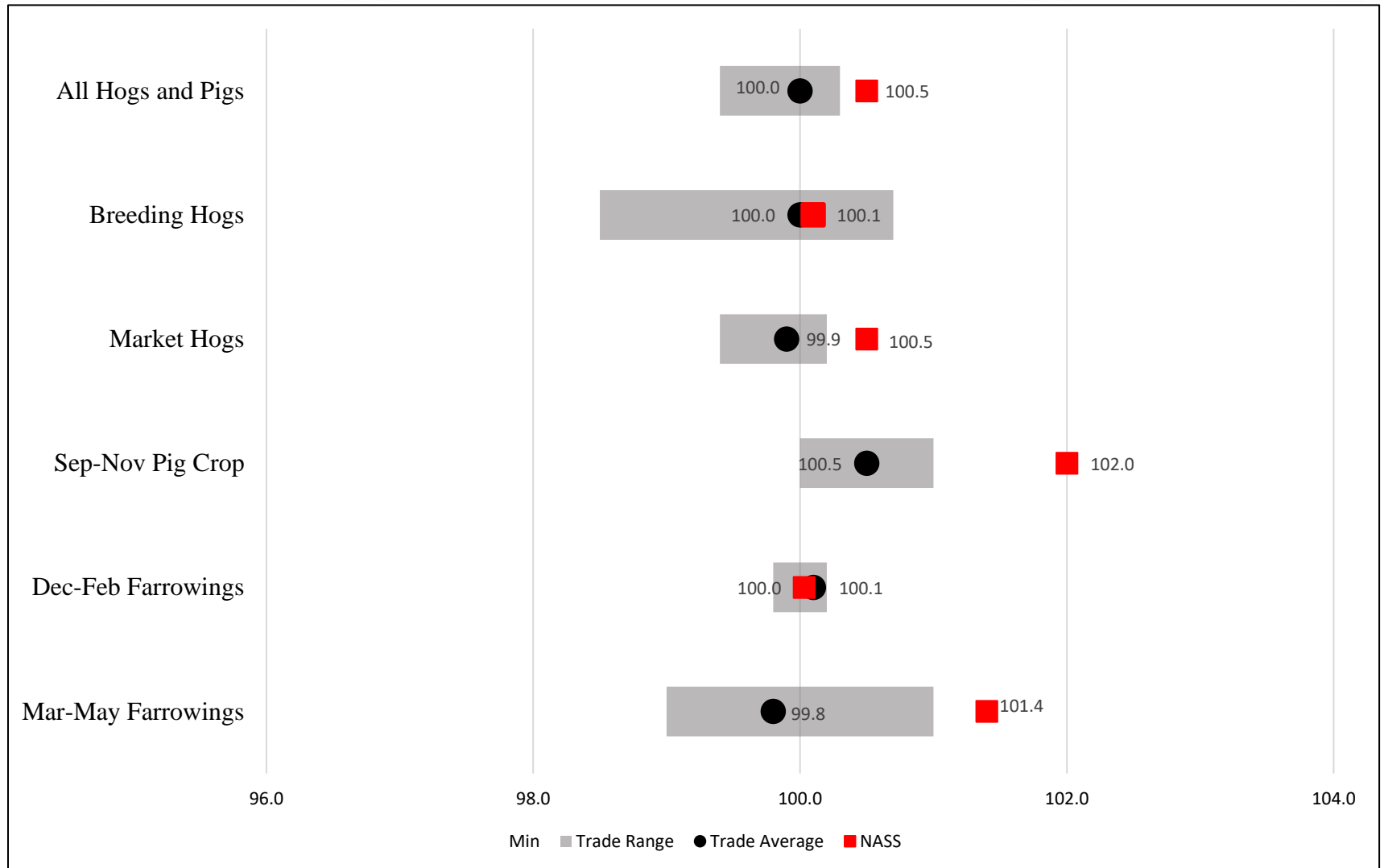


	2023 (1,000 head)	2024	% Change from Previous Year
Pig Crop	34,537	35,238	↑ 2.0
	(Number)		
Pigs per Litter	11.66	11.92	↑ 2.2



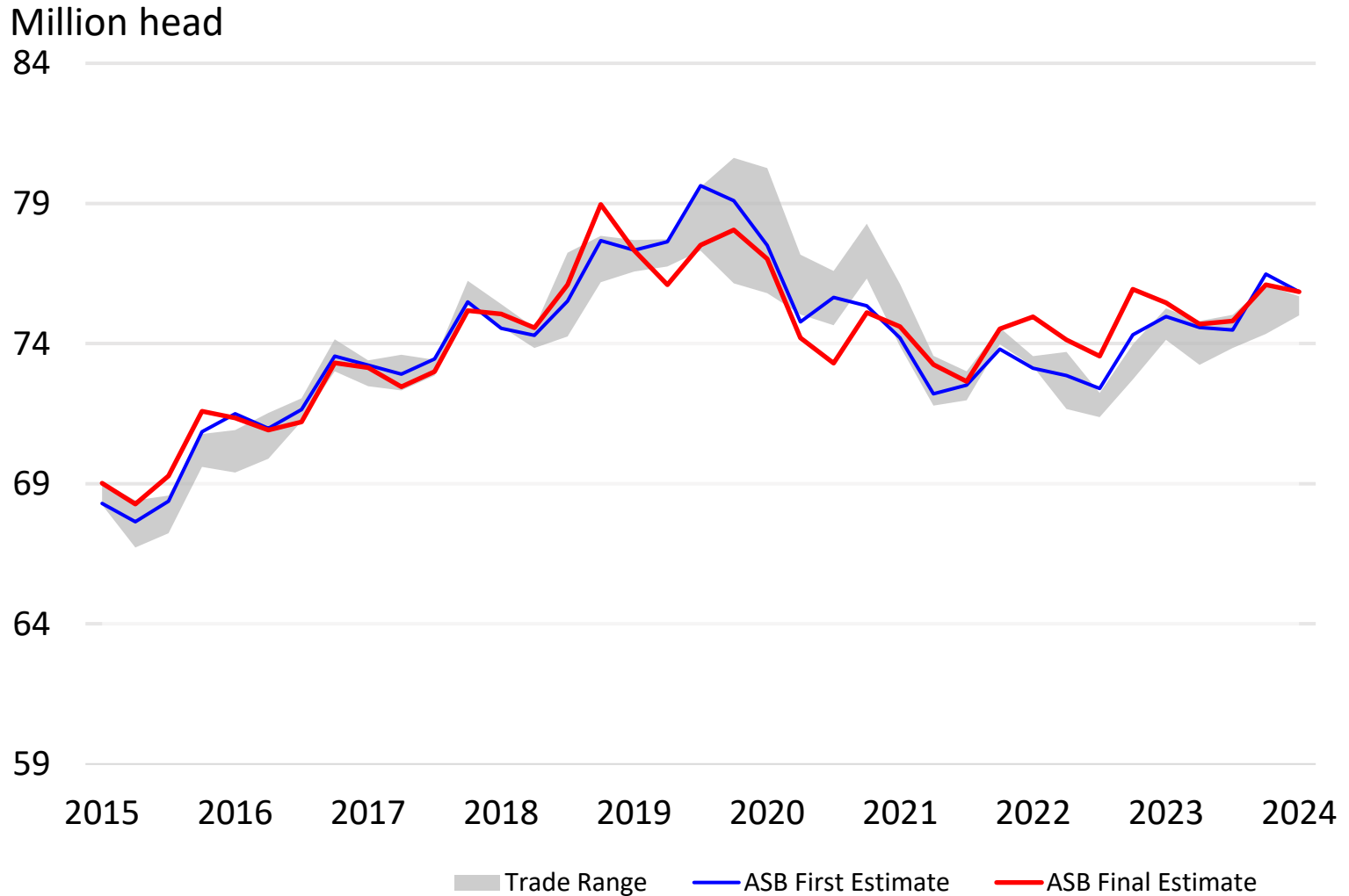


Trade Expectations Compared to NASS Estimates Percent of Previous Year





All Hogs and Pigs First Estimate vs Final Estimate





Breeding Herd Inventory Disposition and Utilization



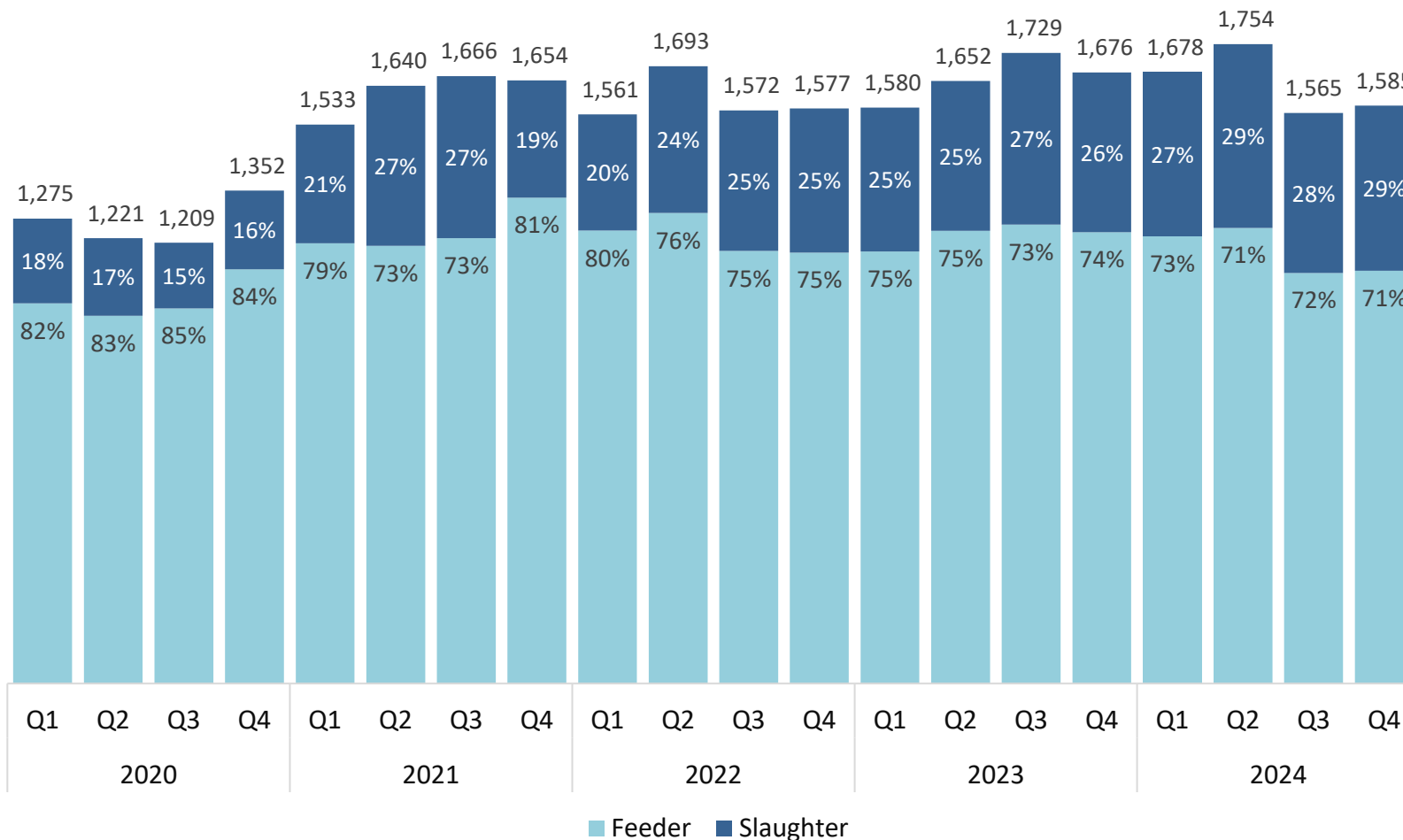
Year	Sep 1 Estimate (1,000 head)	Slaughter (1,000 head)	Additions (1,000 head)	Dec 1 Estimate (1,000 head)	Sow Utilization (Percent)
2015	5,986	778	794	6,002	49
2016	6,016	831	925	6,110	51
2017	6,117	845	907	6,179	51
2018	6,310	864	880	6,326	50
2019	6,461	848	878	6,491	48
2020	6,176	885	924	6,215	50
2021	6,290	835	720	6,175	49
2022	6,252	853	805	6,204	50
2023	6,179	874	694	5,999	48
2024	6,044	836	796	6,004	49



Canadian Imports by Quarter

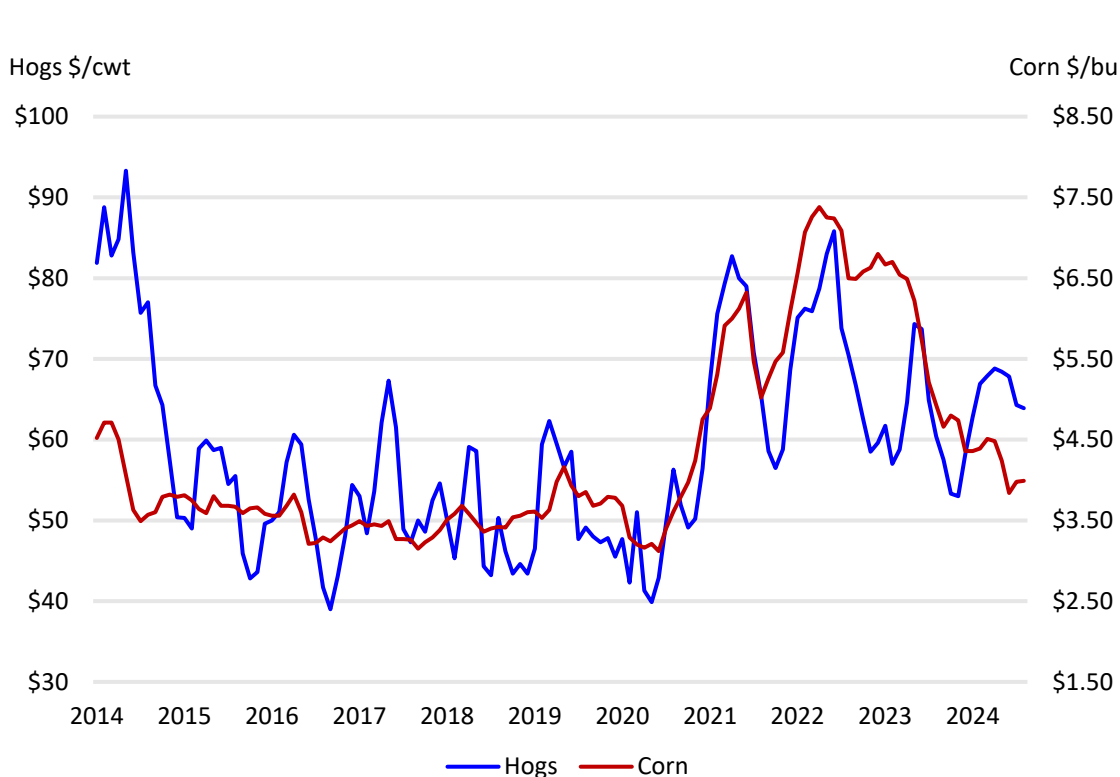
Feeder Pigs and Slaughter Hogs

(1,000 head)





U.S. Prices Received by Farmers for Hogs and Corn



	Hogs	Corn
Month	\$/cwt	\$/bu
May	67.9	4.51
June	68.8	4.48
July	68.4	4.23
August	67.8	3.84
September	64.3	3.98
October	63.9	3.99

	Hog to Corn
Month	Ratio
May	15.06
June	15.36
July	16.17
August	17.66
September	16.16
October	16.02



Upcoming Reports



December 31	Agricultural Prices
January 2	Cotton Systems Fats & Oils Grain Crushings
January 6	Dairy Products
January 10	Grain Stocks Cotton Ginnings Crop Production
January 24	Milk Production Cattle on Feed

<https://www.nass.usda.gov/Publications/index.php>



All Reports Available At

www.nass.usda.gov

For Questions

(202) 720-3570

(800) 727-9540

nass@usda.gov