



# The Faces of U.S. Agriculture

The 2012 Census of Agriculture lets us know who is involved in U.S. agriculture – from family farmers to hired labor, and from new, beginning farmers to next-generation farmers. Census data help inform smart policymaking to benefit farmers and ranchers, their communities, businesses and industries.

## 3.2 MILLION

The number of all farm operators in the U.S. in 2012.

**That's more farmers than the entire population of Iowa.**



↓ **Down 3% from 2007.**

## 22 PERCENT

The percent of all farmers in the U.S. who were beginning farmers in 2012.



**That means 1 out of every 5 farmers operated a farm for less than 10 years.**

## 87 PERCENT

The percent of farms that are operated by families or individuals in the U.S.

**Of the total number of operators, 2.4 million live on their farms.**



## 2.7 MILLION

The number of hired farm workers in 2012.

↑ **Up 4% from 2007.\***

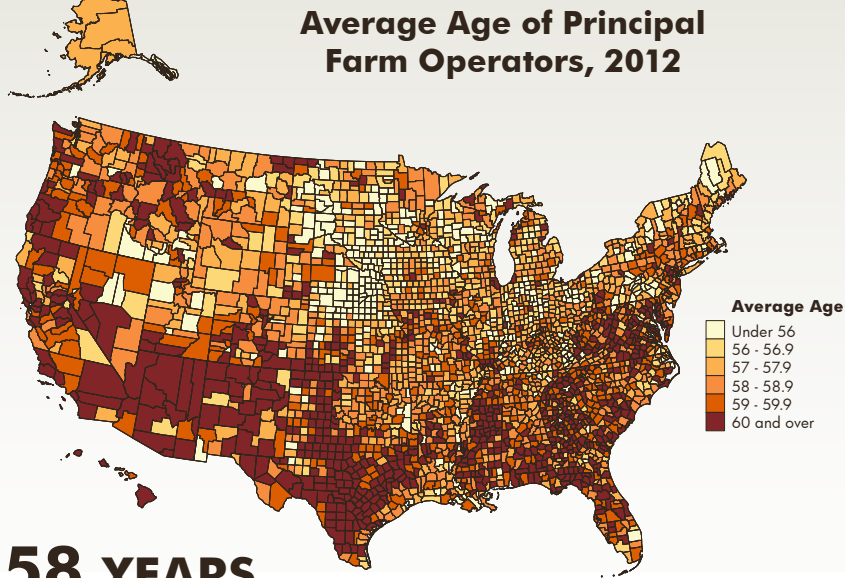
**Hired farm workers account for less than 1% of all U.S. wage and salary workers but are vital to agriculture production.**



## 257,454

The number of Millennial Generation farmers age 34 or younger in the U.S. in 2012.

**That's more than 4 times the enrollment of Texas A&M University.**



## 58 YEARS

The average age of a principal farm operator. **The average age is generally highest in the south, and lowest in the upper plains.**

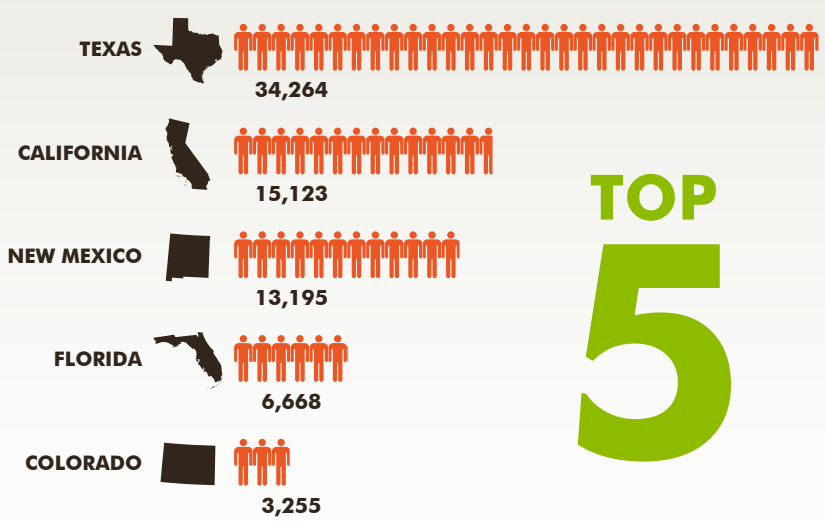


## 969,672

The number of all female farm operators in 2012. **That's 30% of all farm operators in the United States.**



### Top 5 States by Total Number of Hispanic Farm Operators, 2012



\* Statistically significant change. Visit <http://bit.ly/AgCensusFAQs>.

[www.agcensus.usda.gov](http://www.agcensus.usda.gov)  
U.S. Department of Agriculture  
National Agricultural Statistics Service

