

MILK COSTS AND RETURNS, 2000

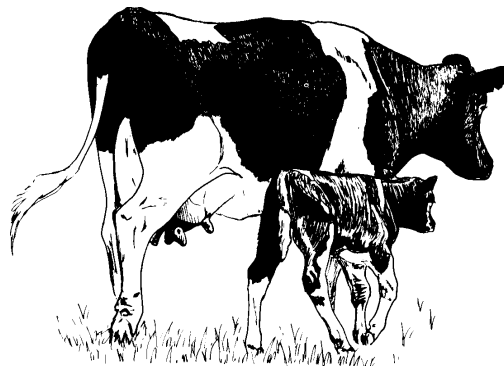
SOURCE: *Milk Costs and Returns*, Economics Research Service (ERS), USDA
Information Contact at ERS, USDA: William McBride (202) 694-5577, e-mail: wmcbride@ers.usda.gov

The relatively high milk prices of recent years, inexpensive concentrate feed prices, and ample supplies of alfalfa hay unleashed an expansion in milk production, and U.S. milk production rose 3 percent in 2000. Greater production put downward pressure on milk prices, causing the gross value of production on dairy operations to fall 12 percent from 1999 to 2000. However, lower feed grain, concentrate feed, hay, and silage prices were responsible for a 3 percent drop in total feed costs, although total cash costs changed little between 1999 and 2000. The net result was that average returns over cash expenses declined almost 60 percent between 1999 and 2000, from \$3.04 to \$1.23 per cwt. of milk sold.

Average returns over cash expenses also declined in all milk production regions between 1999 and 2000. Returns above cash costs were lowest in the Corn Belt, Northeast, and Upper Midwest regions, averaging less than \$1.00 per hundredweight in 2000, and highest in the Pacific, Southeast, and Southern Plains, where returns were more than \$2.00 per hundredweight. Differences in climatic conditions, and the larger-sized operations that characterize the southern and western regions are likely reasons for lower costs on these operations. Lower milk prices resulted in negative returns above total costs for 2000 in all but the Pacific region.

High milk prices forecast for this year along with low feed costs are benefitting U.S. dairies. Dairy producers reported an average income of \$52,699 when surveyed last year, with 63 percent of this income attributed to farming activities. About 58 percent of dairy type farms are located in the Northern Crescent region. These operations' average household income was \$45,724. The highest regional average household income for dairy farms was \$105,444 in the Fruitful Rim, which has a number of larger, often drylot, dairy operations.

The value of dairy production was down \$2.6 billion in 2000, putting the 2000 level about \$2.2 billion below that of 1996. Milk production rose more than 3 percent in 1999 and 2000 as a result of hefty gains in milk production per cow. Consequently, dairy product prices were under pressure throughout 2000. Milk prices averaged about \$12.30 per hundredweight (cwt.) in 2000, down \$2 from a year earlier and the lowest since at least 1991. Milk prices have recovered in 2001 and at times have exceeded \$15 per cwt. Low market prices for feed crops and oil crops benefit livestock producers because these commodities are the primary ingredients in livestock feed and therefore result in lower feed costs.



MILK PRODUCTION: CASH COSTS AND RETURNS, BY REGION, 1999 - 2000

| Item | United States | | IA, MO, OH | | NY, PA, VT | | AZ, CA, WA | | FL, GA | | TX | | MI, MN, WI | |
|---|---------------|--------------|--------------|--------------|--------------|--------------|--------------|--------------|--------------|--------------|--------------|--------------|--------------|--------------|
| | 1999 | 2000 | 1999 | 2000 | 1999 | 2000 | 1999 | 2000 | 1999 | 2000 | 1999 | 2000 | 1999 | 2000 |
| Gross value of production: | | | | | | | | | | | | | | |
| Milk | 14.39 | 12.43 | 14.29 | 12.16 | 15.19 | 13.41 | 13.77 | 11.81 | 16.76 | 14.69 | 15.00 | 13.40 | 13.97 | 11.91 |
| Cattle | 0.90 | 0.95 | 1.12 | 1.19 | 0.80 | 0.84 | 0.64 | 0.68 | 0.98 | 1.03 | 0.92 | 0.97 | 1.03 | 1.07 |
| Other income ^{1/} | 0.54 | 0.54 | 0.46 | 0.46 | 0.41 | 0.42 | 0.55 | 0.54 | 0.50 | 0.49 | 0.35 | 0.36 | 0.66 | 0.67 |
| Total, Gross Value of Production | 15.83 | 13.92 | 15.87 | 13.81 | 16.40 | 14.67 | 14.96 | 13.03 | 18.24 | 16.21 | 16.27 | 14.73 | 15.66 | 13.65 |
| Cash Expenses: | | | | | | | | | | | | | | |
| Feed-- | | | | | | | | | | | | | | |
| Concentrates | 3.70 | 3.62 | 4.13 | 4.06 | 3.58 | 3.56 | 3.04 | 2.92 | 5.10 | 4.73 | 4.97 | 5.00 | 3.66 | 3.57 |
| By-products | 0.23 | 0.23 | 0.29 | 0.30 | 0.04 | 0.04 | 0.52 | 0.53 | 0.50 | 0.48 | 0.18 | 0.17 | 0.12 | 0.12 |
| Liquid Whey | 0.10 | 0.10 | 0.18 | 0.18 | 0.10 | 0.10 | 0.03 | 0.03 | 0.04 | 0.04 | 0.01 | 0.01 | 0.13 | 0.12 |
| Hay | 1.43 | 1.36 | 1.64 | 1.55 | 1.68 | 1.58 | 2.09 | 2.07 | 0.72 | 0.57 | 2.01 | 2.14 | 0.80 | 0.73 |
| Silage | 1.27 | 1.20 | 1.23 | 1.16 | 2.27 | 2.17 | 0.86 | 0.87 | 1.03 | 0.80 | 0.10 | 0.11 | 1.15 | 1.04 |
| Pasture and other forage | 0.10 | 0.10 | 0.12 | 0.13 | 0.04 | 0.03 | 0.05 | 0.05 | 0.06 | 0.07 | 0.10 | 0.09 | 0.15 | 0.16 |
| Total, Feed Costs | 6.83 | 6.61 | 7.59 | 7.38 | 7.71 | 7.48 | 6.59 | 6.47 | 7.45 | 6.69 | 7.37 | 7.52 | 6.01 | 5.74 |
| Other-- | | | | | | | | | | | | | | |
| Hauling | 0.46 | 0.46 | 0.46 | 0.47 | 0.70 | 0.65 | 0.41 | 0.41 | 0.94 | 0.87 | 0.57 | 0.55 | 0.29 | 0.30 |
| Artificial insemination | 0.15 | 0.15 | 0.12 | 0.13 | 0.20 | 0.19 | 0.12 | 0.12 | 0.12 | 0.11 | 0.04 | 0.04 | 0.17 | 0.18 |
| Veterinary and medicine | 0.40 | 0.40 | 0.41 | 0.43 | 0.46 | 0.42 | 0.21 | 0.21 | 0.48 | 0.44 | 0.19 | 0.19 | 0.50 | 0.52 |
| Bedding and litter | 0.25 | 0.26 | 0.32 | 0.32 | 0.37 | 0.37 | 0.06 | 0.06 | 0.00 | 0.00 | 0.00 | 0.00 | 0.34 | 0.35 |
| Marketing | 0.38 | 0.37 | 0.32 | 0.33 | 0.47 | 0.43 | 0.46 | 0.46 | 0.52 | 0.48 | 0.26 | 0.25 | 0.29 | 0.30 |
| Custom services and supplies | 0.44 | 0.44 | 0.40 | 0.41 | 0.56 | 0.53 | 0.41 | 0.42 | 0.64 | 0.59 | 0.30 | 0.29 | 0.39 | 0.41 |
| Fuel, lube, and electricity | 0.49 | 0.60 | 0.51 | 0.64 | 0.62 | 0.77 | 0.28 | 0.30 | 0.31 | 0.37 | 0.43 | 0.54 | 0.56 | 0.69 |
| Machinery and building repairs | 0.87 | 0.91 | 1.01 | 1.04 | 1.02 | 1.07 | 0.34 | 0.35 | 0.70 | 0.72 | 0.49 | 0.50 | 1.14 | 1.19 |
| Hired labor | 0.55 | 0.52 | 0.52 | 0.50 | 0.53 | 0.50 | 0.51 | 0.49 | 1.21 | 1.16 | 0.67 | 0.63 | 0.49 | 0.45 |
| DHIA fees | 0.08 | 0.08 | 0.07 | 0.07 | 0.10 | 0.09 | 0.07 | 0.07 | 0.06 | 0.05 | 0.05 | 0.04 | 0.08 | 0.08 |
| Total, Variable Cash Expenses | 10.90 | 10.80 | 11.73 | 11.72 | 12.74 | 12.50 | 9.46 | 9.36 | 12.43 | 11.48 | 10.37 | 10.55 | 10.26 | 10.21 |
| General Farm Overhead | 0.60 | 0.59 | 0.64 | 0.62 | 0.60 | 0.59 | 0.38 | 0.37 | 0.72 | 0.70 | 0.51 | 0.50 | 0.73 | 0.72 |
| Taxes and insurance | 0.31 | 0.31 | 0.28 | 0.28 | 0.41 | 0.41 | 0.12 | 0.12 | 0.34 | 0.33 | 0.16 | 0.15 | 0.39 | 0.39 |
| Interest | 0.98 | 0.99 | 0.82 | 0.82 | 0.90 | 0.90 | 0.73 | 0.73 | 0.68 | 0.70 | 0.69 | 0.69 | 1.33 | 1.34 |
| Total, Fixed Cash Expenses | 1.89 | 1.89 | 1.74 | 1.72 | 1.91 | 1.90 | 1.23 | 1.22 | 1.74 | 1.73 | 1.36 | 1.34 | 2.45 | 2.45 |
| Total, Cash Expenses | 12.79 | 12.69 | 13.47 | 13.44 | 14.65 | 14.40 | 10.69 | 10.58 | 14.17 | 13.21 | 11.73 | 11.89 | 12.71 | 12.66 |
| Gross Value of Production | | | | | | | | | | | | | | |
| Less Cash Expenses | 3.04 | 1.23 | 2.40 | 0.37 | 1.75 | 0.27 | 4.27 | 2.45 | 4.07 | 3.00 | 4.54 | 2.84 | 2.95 | 0.99 |

^{1/} Includes the dairy's share of receipts from cooperative patronage dividends, assessment refunds, renting or leasing of dairy animals, the estimated value of manure as a fertilizer, and insurance indemnity payments.

SOURCE: **Milk Costs and Returns**, Economics Research Service (ERS), USDA. Information Contact at ERS, USDA: William McBride (202) 694-5577, e-mail: wmcbride@ers.usda.gov

MILK PRODUCTION: ECONOMIC COSTS AND RETURNS, BY REGION, 1999-2000

| Item | United States | | IA, MO, OH | | NY, PA, VT | | AZ, CA, WA | | FL, GA | | TX | | MI, MN, WI | |
|---|---------------|--------------|--------------|--------------|--------------|--------------|--------------|--------------|--------------|--------------|--------------|--------------|--------------|--------------|
| | 1999 | 2000 | 1999 | 2000 | 1999 | 2000 | 1999 | 2000 | 1999 | 2000 | 1999 | 2000 | 1999 | 2000 |
| Gross value of production: | | | | | | | | | | | | | | |
| Milk | 14.39 | 12.43 | 14.29 | 12.16 | 15.19 | 13.41 | 13.77 | 11.81 | 16.76 | 14.69 | 15.00 | 13.40 | 13.97 | 11.91 |
| Cattle | 0.90 | 0.95 | 1.12 | 1.19 | 0.80 | 0.84 | 0.64 | 0.68 | 0.98 | 1.03 | 0.92 | 0.97 | 1.03 | 1.07 |
| Other income ^{1/} | 0.54 | 0.54 | 0.46 | 0.46 | 0.41 | 0.42 | 0.55 | 0.54 | 0.50 | 0.49 | 0.35 | 0.36 | 0.66 | 0.67 |
| Total, Gross Value of Production | 15.83 | 13.92 | 15.87 | 13.81 | 16.40 | 14.67 | 14.96 | 13.03 | 18.24 | 16.21 | 16.27 | 14.73 | 15.66 | 13.65 |
| Economic (Full Ownership) Costs: | | | | | | | | | | | | | | |
| Variable cash expenses | 10.90 | 10.80 | 11.73 | 11.72 | 12.74 | 12.50 | 9.46 | 9.36 | 12.43 | 11.48 | 10.37 | 10.55 | 10.26 | 10.21 |
| General farm overhead | 0.60 | 0.59 | 0.64 | 0.62 | 0.60 | 0.59 | 0.38 | 0.37 | 0.72 | 0.70 | 0.51 | 0.50 | 0.73 | 0.72 |
| Taxes and insurance | 0.31 | 0.31 | 0.28 | 0.28 | 0.41 | 0.41 | 0.12 | 0.12 | 0.34 | 0.33 | 0.16 | 0.15 | 0.39 | 0.39 |
| Capital replacement | 2.18 | 2.26 | 2.25 | 2.32 | 2.12 | 2.20 | 1.44 | 1.51 | 2.66 | 2.74 | 2.13 | 2.21 | 2.57 | 2.67 |
| Operating capital | 0.09 | 0.11 | 0.09 | 0.12 | 0.10 | 0.12 | 0.07 | 0.09 | 0.10 | 0.11 | 0.08 | 0.10 | 0.09 | 0.10 |
| Other nonland capital | 0.85 | 0.81 | 0.84 | 0.79 | 0.80 | 0.75 | 0.57 | 0.56 | 1.49 | 1.39 | 0.81 | 0.76 | 0.99 | 0.94 |
| Land | 0.01 | 0.01 | 0.01 | 0.01 | 0.00 | 0.00 | 0.01 | 0.01 | 0.00 | 0.00 | 0.00 | 0.00 | 0.01 | 0.01 |
| Unpaid labor | 1.59 | 1.51 | 2.54 | 2.46 | 2.23 | 2.09 | 0.43 | 0.41 | 0.29 | 0.29 | 0.77 | 0.72 | 1.86 | 1.72 |
| Total, Economic Costs | 16.53 | 16.40 | 18.38 | 18.32 | 19.00 | 18.66 | 12.48 | 12.43 | 18.03 | 17.04 | 14.83 | 14.99 | 16.90 | 16.76 |
| Residual Returns to Mgmt and Risk | -0.70 | -2.48 | -2.51 | -4.51 | -2.60 | -3.99 | 2.48 | 0.60 | 0.21 | -0.83 | 1.44 | -0.26 | -1.24 | -3.11 |

^{1/} Includes the dairy's share of receipts from cooperative patronage dividends, assessment refunds, renting or leasing of dairy animals, the estimated value of manure as a fertilizer, and insurance indemnity payments.

SOURCE: **Milk Costs and Returns**, Economics Research Service (ERS), USDA. Information Contact at ERS, USDA: William McBride (202) 694-5577, e-mail: wmcbride@ers.usda.gov

MILK PRODUCTION: CASH COSTS AND RETURNS, NORTHEAST^{1/}, 1995 - 2000

| Item | 1995 | 1996 | 1997 | 1998 | 1999 | 2000 |
|---|-----------------|--------------|--------------|--------------|--------------|--------------|
| | Dollars per Cwt | | | | | |
| Gross value of production: | | | | | | |
| Milk | 13.26 | 15.19 | 13.74 | 15.63 | 15.19 | 13.41 |
| Cattle | 0.78 | 0.69 | 0.75 | 0.73 | 0.80 | 0.84 |
| Other income ^{2/} | 0.50 | 0.51 | 0.46 | 0.43 | 0.41 | 0.42 |
| Total, Gross Value of Production | 14.54 | 16.39 | 14.95 | 16.79 | 16.40 | 14.62 |
| Cash Expenses: | | | | | | |
| Feed-- | | | | | | |
| Concentrates | 3.48 | 4.04 | 4.42 | 4.07 | 3.58 | 3.56 |
| By-products | 0.04 | 0.04 | 0.04 | 0.04 | 0.04 | 0.04 |
| Liquid Whey | 0.13 | 0.14 | 0.14 | 0.15 | 0.10 | 0.10 |
| Hay | 1.29 | 1.37 | 1.68 | 1.48 | 1.68 | 1.58 |
| Silage | 1.76 | 1.84 | 2.26 | 2.03 | 2.27 | 2.17 |
| Pasture and other forage | 0.03 | 0.03 | 0.03 | 0.03 | 0.04 | 0.03 |
| Total, Feed Costs | 6.73 | 7.46 | 8.57 | 7.80 | 7.71 | 7.48 |
| Other-- | | | | | | |
| Hauling | 0.75 | 0.68 | 0.69 | 0.69 | 0.70 | 0.65 |
| Artificial insemination | 0.21 | 0.20 | 0.20 | 0.20 | 0.20 | 0.19 |
| Veterinary and medicine | 0.49 | 0.44 | 0.45 | 0.44 | 0.46 | 0.42 |
| Bedding and litter | 0.38 | 0.37 | 0.35 | 0.38 | 0.37 | 0.37 |
| Marketing | 0.49 | 0.45 | 0.46 | 0.45 | 0.47 | 0.43 |
| Custom services and supplies | 0.60 | 0.54 | 0.55 | 0.55 | 0.56 | 0.53 |
| Fuel, lube, and electricity | 0.65 | 0.70 | 0.69 | 0.65 | 0.62 | 0.77 |
| Machinery and building repairs | 0.95 | 0.93 | 0.99 | 1.01 | 1.02 | 1.07 |
| Hired labor | 0.64 | 0.61 | 0.58 | 0.57 | 0.53 | 0.50 |
| DHIA fees | 0.11 | 0.10 | 0.10 | 0.10 | 0.10 | 0.09 |
| Total, Variable Cash Expenses | 12.16 | 12.51 | 13.63 | 12.84 | 12.74 | 12.50 |
| General Farm Overhead | 0.55 | 0.53 | 0.60 | 0.61 | 0.60 | 0.59 |
| Taxes and insurance | 0.40 | 0.44 | 0.43 | 0.48 | 0.41 | 0.41 |
| Interest | 0.77 | 0.79 | 0.76 | 0.87 | 0.90 | 0.90 |
| Total, Fixed Cash Expenses | 1.72 | 1.76 | 1.79 | 1.96 | 1.91 | 1.90 |
| Total, Cash Expenses | 13.88 | 14.27 | 15.42 | 14.80 | 14.65 | 14.40 |
| Gross Value of Production | | | | | | |
| Less Cash Expenses | 0.66 | 2.12 | -0.47 | 1.99 | 1.75 | 0.27 |

^{1/} Includes New York, Pennsylvania, and Vermont.

^{2/} Includes the dairy's share of receipts from cooperative patronage dividends, assessment refunds, renting or leasing of dairy animals, the estimated value of manure as a fertilizer, and insurance indemnity payments.

SOURCE: **Milk Costs and Returns**, Economics Research Service (ERS), USDA. Information Contact at ERS, USDA:

William McBride (202) 694-5577, e-mail: wmcbride@ers.usda.gov

MILK PRODUCTION: ECONOMIC COSTS AND RETURNS, NORTHEAST^{1/}, 1995 - 2000

| Item | 1995 | 1996 | 1997 | 1998 | 1999 | 2000 |
|---|-----------------|--------------|--------------|--------------|--------------|--------------|
| | Dollars per Cwt | | | | | |
| Gross value of production: | | | | | | |
| Milk | 13.26 | 15.19 | 13.74 | 15.63 | 15.19 | 13.41 |
| Cattle | 0.78 | 0.69 | 0.75 | 0.73 | 0.80 | 0.84 |
| Other income ^{2/} | 0.50 | 0.51 | 0.46 | 0.43 | 0.41 | 0.42 |
| Total, Gross Value of Production | 14.54 | 16.39 | 14.95 | 16.79 | 16.40 | 14.67 |
| Economic (Full Ownership) Costs: | | | | | | |
| Variable cash expenses | 12.16 | 12.51 | 13.63 | 12.84 | 12.74 | 12.50 |
| General farm overhead | 0.55 | 0.53 | 0.60 | 0.61 | 0.60 | 0.59 |
| Taxes and insurance | 0.40 | 0.44 | 0.43 | 0.48 | 0.41 | 0.41 |
| Capital replacement | 2.09 | 2.02 | 2.14 | 2.07 | 2.12 | 2.20 |
| Operating capital | 0.12 | 0.11 | 0.12 | 0.11 | 0.10 | 0.12 |
| Other nonland capital | 0.91 | 0.83 | 0.94 | 0.82 | 0.80 | 0.75 |
| Land | 0.00 | 0.00 | 0.00 | 0.00 | 0.00 | 0.00 |
| Unpaid labor | 2.66 | 2.56 | 2.44 | 2.38 | 2.23 | 2.09 |
| Total, Economic Costs | 18.89 | 19.00 | 20.30 | 19.31 | 19.00 | 18.66 |
| Residual Returns to Mgmt and Risk | -4.35 | -2.61 | -5.35 | -2.52 | -2.60 | -3.99 |

^{1/} Includes New York, Pennsylvania, and Vermont.

^{2/} Includes the dairy's share of receipts from cooperative patronage dividends, assessment refunds, renting or leasing of dairy animals, the estimated value of manure as a fertilizer, and insurance indemnity payments.

SOURCE: **Milk Costs and Returns**, Economics Research Service (ERS), USDA. Information Contact at ERS, USDA:

William McBride (202) 694-5577, e-mail: wmcbride@ers.usda.gov

MILK PRODUCTION: CASH COSTS AND RETURNS, UNITED STATES, 1995 - 2000

| Item | 1995 | 1996 | 1997 | 1998 | 1999 | 2000 |
|---|-----------------|--------------|--------------|--------------|--------------|--------------|
| | Dollars per Cwt | | | | | |
| Gross value of production: | | | | | | |
| Milk | 12.80 | 14.78 | 13.43 | 15.51 | 14.39 | 12.43 |
| Cattle | 0.87 | 0.78 | 0.85 | 0.83 | 0.90 | 0.95 |
| Other income ^{1/} | 0.60 | 0.61 | 0.59 | 0.55 | 0.54 | 0.54 |
| Total, Gross Value of Production | 14.27 | 16.17 | 14.87 | 16.89 | 15.83 | 13.92 |
| Cash Expenses: | | | | | | |
| Feed-- | | | | | | |
| Concentrates | 3.51 | 4.09 | 4.42 | 4.00 | 3.70 | 3.62 |
| By-products | 0.21 | 0.21 | 0.23 | 0.23 | 0.23 | 0.23 |
| Liquid Whey | 0.12 | 0.13 | 0.13 | 0.14 | 0.10 | 0.10 |
| Hay | 1.45 | 1.60 | 1.82 | 1.60 | 1.43 | 1.36 |
| Silage | 1.25 | 1.37 | 1.68 | 1.43 | 1.27 | 1.20 |
| Pasture and other forage | 0.12 | 0.13 | 0.12 | 0.11 | 0.10 | 0.10 |
| Total, Feed Costs | 6.66 | 7.53 | 8.40 | 7.51 | 6.83 | 6.61 |
| Other-- | | | | | | |
| Hauling | 0.46 | 0.44 | 0.45 | 0.45 | 0.46 | 0.46 |
| Artificial insemination | 0.15 | 0.14 | 0.15 | 0.15 | 0.15 | 0.15 |
| Veterinary and medicine | 0.38 | 0.36 | 0.39 | 0.39 | 0.40 | 0.40 |
| Bedding and litter | 0.24 | 0.23 | 0.25 | 0.25 | 0.25 | 0.26 |
| Marketing | 0.38 | 0.36 | 0.37 | 0.37 | 0.38 | 0.37 |
| Custom services and supplies | 0.43 | 0.42 | 0.43 | 0.43 | 0.44 | 0.44 |
| Fuel, lube, and electricity | 0.49 | 0.53 | 0.53 | 0.49 | 0.49 | 0.60 |
| Machinery and building repairs | 0.78 | 0.76 | 0.83 | 0.85 | 0.87 | 0.91 |
| Hired labor | 0.64 | 0.62 | 0.59 | 0.57 | 0.55 | 0.52 |
| DHIA fees | 0.08 | 0.07 | 0.08 | 0.08 | 0.08 | 0.08 |
| Total, Variable Cash Expenses | 10.85 | 11.49 | 12.47 | 11.54 | 10.90 | 10.80 |
| General Farm Overhead | 0.54 | 0.53 | 0.60 | 0.62 | 0.60 | 0.59 |
| Taxes and insurance | 0.29 | 0.33 | 0.32 | 0.36 | 0.31 | 0.31 |
| Interest | 0.83 | 0.85 | 0.83 | 0.95 | 0.98 | 0.99 |
| Total, Fixed Cash Expenses | 1.66 | 1.71 | 1.75 | 1.93 | 1.89 | 1.89 |
| Total, Cash Expenses | 12.51 | 13.20 | 14.22 | 13.47 | 12.79 | 12.69 |
| Gross Value of Production | | | | | | |
| Less Cash Expenses | 1.76 | 2.97 | 0.65 | 3.42 | 3.04 | 1.23 |

^{1/} Includes the dairy's share of receipts from cooperative patronage dividends, assessment refunds, renting or leasing of dairy animals, the estimated value of manure as a fertilizer, and insurance indemnity payments.

SOURCE: *Milk Costs and Returns*, Economics Research Service (ERS), USDA. Information Contact at ERS, USDA:

William McBride (202) 694-5577, e-mail: wmcbride@ers.usda.gov

MILK PRODUCTION: ECONOMIC COSTS AND RETURNS, UNITED STATES, 1995 - 2000

| Item | 1995 | 1996 | 1997 | 1998 | 1999 | 2000 |
|---|-----------------|--------------|--------------|--------------|--------------|--------------|
| | Dollars per Cwt | | | | | |
| Gross value of production: | | | | | | |
| Milk | 12.80 | 14.78 | 13.43 | 15.51 | 14.39 | 12.43 |
| Cattle | 0.87 | 0.78 | 0.85 | 0.83 | 0.90 | 0.95 |
| Other income ^{1/} | 0.60 | 0.61 | 0.59 | 0.55 | 0.54 | 0.54 |
| Total, Gross Value of Production | 14.27 | 16.17 | 14.87 | 16.89 | 15.83 | 13.92 |
| Economic (Full Ownership) Costs: | | | | | | |
| Variable cash expenses | 10.85 | 11.49 | 12.47 | 11.54 | 10.90 | 10.80 |
| General farm overhead | 0.54 | 0.53 | 0.60 | 0.62 | 0.60 | 0.59 |
| Taxes and insurance | 0.29 | 0.33 | 0.32 | 0.36 | 0.31 | 0.31 |
| Capital replacement | 2.07 | 2.01 | 2.15 | 2.10 | 2.18 | 2.26 |
| Operating capital | 0.10 | 0.10 | 0.11 | 0.10 | 0.09 | 0.11 |
| Other nonland capital | 0.94 | 0.87 | 0.99 | 0.87 | 0.85 | 0.81 |
| Land | 0.01 | 0.00 | 0.00 | 0.01 | 0.01 | 0.01 |
| Unpaid labor | 1.85 | 1.80 | 1.73 | 1.65 | 1.59 | 1.51 |
| Total, Economic Costs | 16.65 | 17.13 | 18.37 | 17.25 | 16.53 | 16.40 |
| Residual Returns to Mgmt and Risk | -2.38 | -0.96 | -3.50 | -0.36 | -0.70 | -2.48 |

^{1/} Includes the dairy's share of receipts from cooperative patronage dividends, assessment refunds, renting or leasing of dairy animals, the estimated value of manure as a fertilizer, and insurance indemnity payments.

SOURCE: *Milk Costs and Returns*, Economics Research Service (ERS), USDA. Information Contact at ERS, USDA:

William McBride (202) 694-5577, e-mail: wmcbride@ers.usda.gov