



Released December 19, 2024, by the National Agricultural Statistics Service (NASS), Agricultural Statistics Board, United States Department of Agriculture (USDA).

November Milk Production down 0.8 Percent

Milk production in the 24 major States during November totaled 17.2 billion pounds, down 0.8 percent from November 2023. October revised production, at 18.0 billion pounds, was up 0.6 percent from October 2023. The October revision represented an increase of 32 million pounds or 0.2 percent from last month's preliminary production estimate.

Production per cow in the 24 major States averaged 1,925 pounds for November, 22 pounds below November 2023.

The number of milk cows on farms in the 24 major States was 8.92 million head, 32,000 head more than November 2023, but 2,000 head less than October 2024.

November Milk Production in the United States down 1.0 Percent

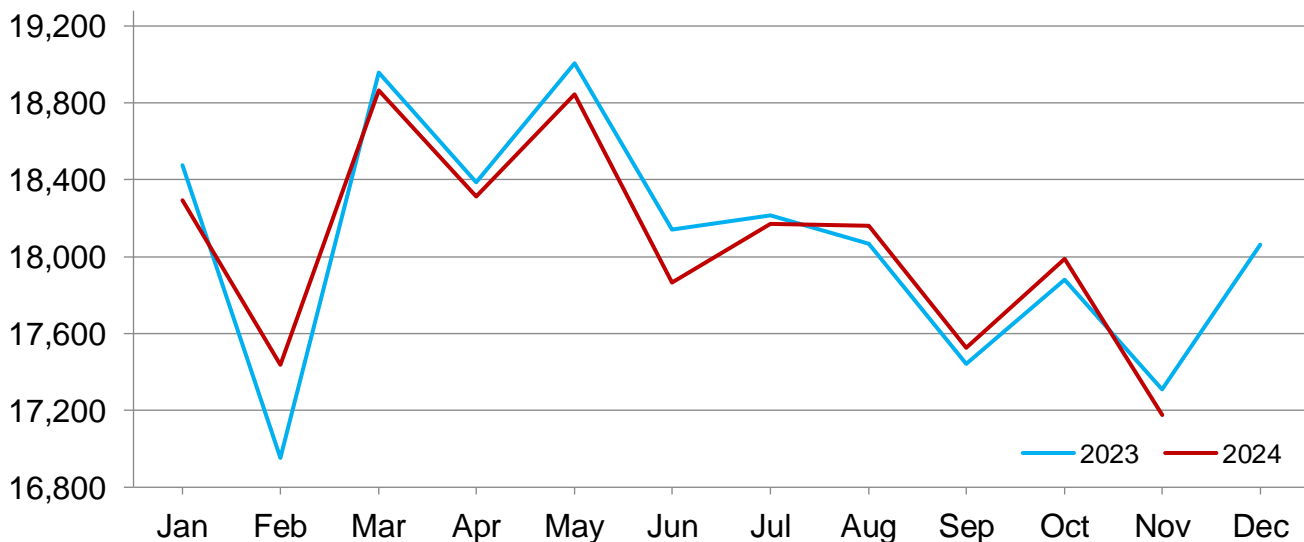
Milk production in the United States during November totaled 17.9 billion pounds, down 1.0 percent from November 2023.

Production per cow in the United States averaged 1,909 pounds for November, 23 pounds below November 2023.

The number of milk cows on farms in the United States was 9.37 million head, 20,000 head more than November 2023, but 5,000 head less than October 2024.

Monthly Milk Production - 24 Selected States

Million pounds



Milk Cows and Production by Quarter – United States: 2023-2024

[May not add due to rounding. Blank data cells indicate estimation period has not yet begun]

Quarter	Milk cows ¹		Milk per cow ²		Milk production ²		Change from 2023
	2023	2024	2023	2024	2023	2024	
	(1,000 head)	(1,000 head)	(pounds)	(pounds)	(million pounds)	(million pounds)	(percent)
January-March	9,418	9,337	6,035	6,100	56,837	56,959	0.2
April-June	9,410	9,328	6,164	6,150	58,004	57,368	-1.1
July-September	9,366	9,331	5,978	6,008	55,994	56,061	0.1
October-December	9,349		5,940		55,529		
Annual	9,386		24,117		226,364		

¹ Includes dry cows. Excludes heifers not yet fresh.

² Excludes milk sucked by calves.

Milk Cows and Production by Month – 24 Selected States: 2023-2024

[May not add due to rounding. Blank data cells indicate estimation period has not yet begun]

Month	Milk cows ¹		Milk per cow ²		Milk production ²		Change from 2023
	2023	2024	2023	2024	2023	2024	
	(1,000 head)	(1,000 head)	(pounds)	(pounds)	(million pounds)	(million pounds)	(percent)
January	8,922	8,870	2,071	2,062	18,474	18,294	-1.0
February	8,939	8,888	1,897	1,962	16,953	17,439	2.9
March	8,952	8,892	2,118	2,122	18,956	18,865	-0.5
April	8,941	8,888	2,056	2,061	18,386	18,314	-0.4
May	8,945	8,886	2,125	2,121	19,006	18,845	-0.8
June	8,925	8,875	2,033	2,013	18,141	17,863	-1.5
July	8,909	8,878	2,045	2,047	18,216	18,170	-0.3
August	8,906	8,887	2,028	2,044	18,065	18,161	0.5
September	8,907	8,905	1,958	1,968	17,444	17,527	0.5
October	8,900	8,925	2,009	2,015	17,880	17,987	0.6
November	8,891	8,923	1,947	1,925	17,311	17,176	-0.8
December	8,894		2,031		18,061		
Annual	8,919		24,318		216,893		

¹ Includes dry cows. Excludes heifers not yet fresh.

² Excludes milk sucked by calves.

Estimated Milk Cows and Production by Month – United States: 2023-2024

[May not add due to rounding. Blank data cells indicate estimation period has not yet begun]

Month	Milk cows ¹		Milk per cow ²		Milk production ²		Change from 2023
	2023	2024	2023	2024	2023	2024	
	(1,000 head)	(1,000 head)	(pounds)	(pounds)	(million pounds)	(million pounds)	(percent)
January	9,401	9,323	2,054	2,047	19,308	19,083	-1.2
February	9,419	9,343	1,881	1,947	17,718	18,195	2.7
March	9,433	9,346	2,100	2,106	19,811	19,681	-0.7
April	9,414	9,333	2,040	2,046	19,204	19,095	-0.6
May	9,418	9,331	2,108	2,106	19,852	19,648	-1.0
June	9,397	9,320	2,016	1,998	18,948	18,625	-1.7
July	9,368	9,319	2,027	2,029	18,985	18,911	-0.4
August	9,365	9,328	2,010	2,027	18,828	18,904	0.4
September	9,366	9,346	1,941	1,952	18,181	18,246	0.4
October	9,355	9,370	1,993	1,998	18,645	18,725	0.4
November	9,345	9,365	1,932	1,909	18,051	17,875	-1.0
December	9,348		2,015		18,833		
Annual	9,386		24,117		226,364		

¹ Includes dry cows. Excludes heifers not yet fresh.

² Excludes milk sucked by calves.

Milk Cows and Production – 24 Selected States: November 2023 and 2024

[May not add due to rounding]

State	Milk cows ¹		Milk per cow ²		Milk production ²		Change from 2023
	2023	2024	2023	2024	2023	2024	
	(1,000 head)	(1,000 head)	(pounds)	(pounds)	(million pounds)	(million pounds)	(percent)
Arizona	199	191	1,960	1,960	390	374	-4.1
California	1,710	1,709	1,905	1,730	3,258	2,957	-9.2
Colorado	197	206	2,105	2,110	415	435	4.8
Florida	98	98	1,630	1,595	160	156	-2.5
Georgia	90	85	1,745	1,880	157	160	1.9
Idaho	663	674	1,995	2,005	1,323	1,351	2.1
Illinois	79	77	1,720	1,740	136	134	-1.5
Indiana	190	190	1,915	1,930	364	367	0.8
Iowa	239	245	1,990	2,010	476	492	3.4
Kansas	176	181	1,945	1,940	342	351	2.6
Michigan	439	439	2,210	2,220	970	975	0.5
Minnesota	449	442	1,855	1,885	833	833	-
New Mexico	255	240	1,950	1,960	497	470	-5.4
New York	630	630	2,040	2,065	1,285	1,301	1.2
Ohio	255	251	1,800	1,830	459	459	-
Oregon	120	117	1,675	1,690	201	198	-1.5
Pennsylvania	466	465	1,680	1,700	783	791	1.0
South Dakota	202	215	1,860	1,875	376	403	7.2
Texas	635	675	2,090	2,110	1,327	1,424	7.3
Utah	88	90	1,875	1,870	165	168	1.8
Vermont	116	113	1,735	1,760	201	199	-1.0
Virginia	68	66	1,670	1,690	114	112	-1.8
Washington	257	258	1,925	1,900	495	490	-1.0
Wisconsin	1,270	1,266	2,035	2,035	2,584	2,576	-0.3
24-State Total	8,891	8,923	1,947	1,925	17,311	17,176	-0.8

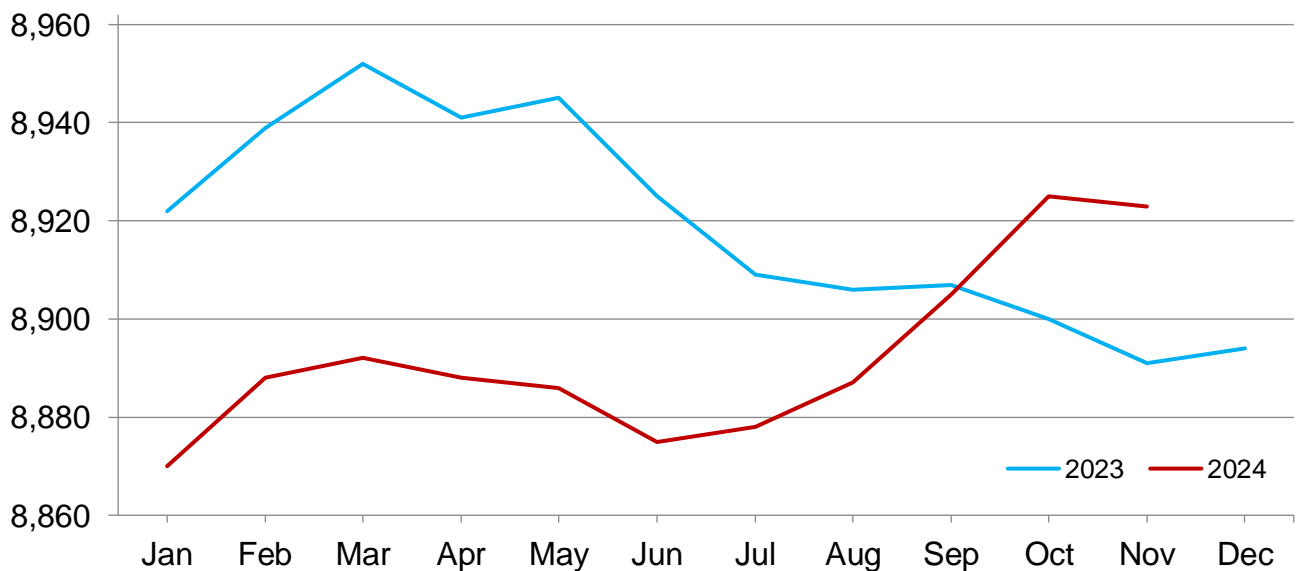
- Represents zero.

¹ Includes dry cows. Excludes heifers not yet fresh.

² Excludes milk sucked by calves.

Monthly Milk Cows - 24 Selected States

Thousand head



Milk Cows and Production – 24 Selected States: October 2023 and 2024

[May not add due to rounding]

State	Milk cows ¹		Milk per cow ²		Milk production ²		Change from 2023
	2023	2024	2023	2024	2023	2024	
	(1,000 head)	(1,000 head)	(pounds)	(pounds)	(million pounds)	(million pounds)	(percent)
Arizona	201	191	1,960	1,955	394	373	-5.3
California	1,711	1,709	1,935	1,870	3,311	3,196	-3.5
Colorado	198	206	2,175	2,185	431	450	4.4
Florida	100	99	1,580	1,560	158	154	-2.5
Georgia	90	85	1,775	1,930	160	164	2.5
Idaho	663	674	2,080	2,110	1,379	1,422	3.1
Illinois	79	77	1,745	1,780	138	137	-0.7
Indiana	191	189	1,965	1,990	375	376	0.3
Iowa	239	243	2,060	2,090	492	508	3.3
Kansas	175	181	2,015	2,005	353	363	2.8
Michigan	439	439	2,290	2,330	1,005	1,023	1.8
Minnesota	451	442	1,935	1,965	873	869	-0.5
New Mexico	260	242	2,000	2,055	520	497	-4.4
New York	630	630	2,130	2,130	1,342	1,342	-
Ohio	255	251	1,845	1,880	470	472	0.4
Oregon	119	118	1,745	1,760	208	208	-
Pennsylvania	466	465	1,710	1,725	797	802	0.6
South Dakota	198	215	1,955	1,950	387	419	8.3
Texas	635	675	2,175	2,225	1,381	1,502	8.8
Utah	88	90	1,940	1,935	171	174	1.8
Vermont	116	113	1,805	1,840	209	208	-0.5
Virginia	69	66	1,700	1,705	117	113	-3.4
Washington	257	259	2,010	2,000	517	518	0.2
Wisconsin	1,270	1,266	2,120	2,130	2,692	2,697	0.2
24-State Total	8,900	8,925	2,009	2,015	17,880	17,987	0.6

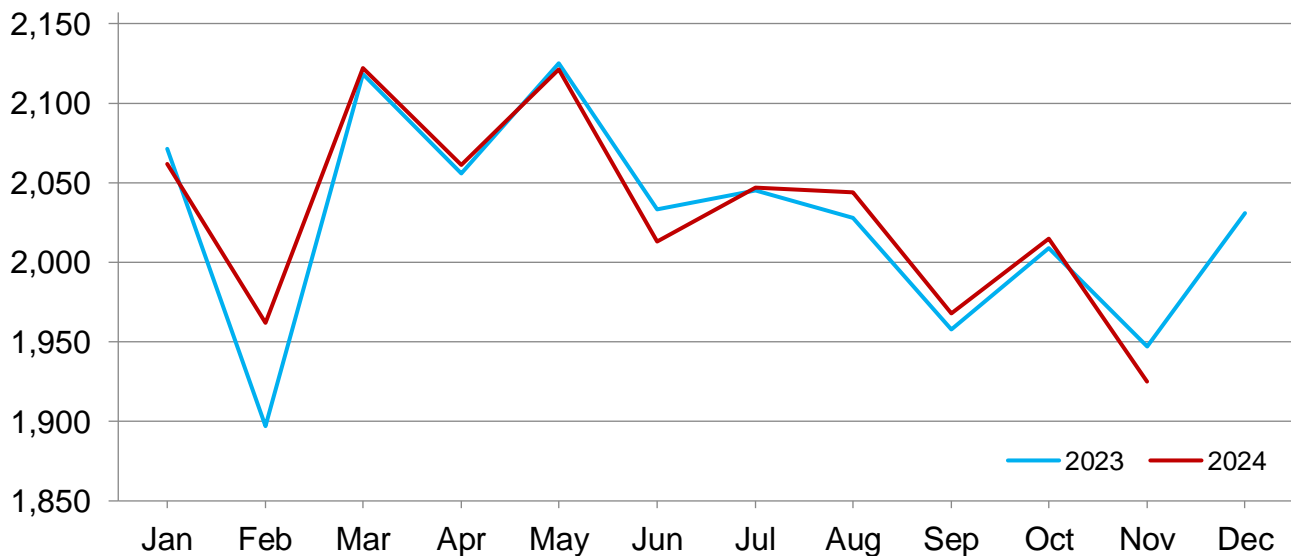
- Represents zero.

¹ Includes dry cows. Excludes heifers not yet fresh.

² Excludes milk sucked by calves.

Monthly Milk Per Cow - 24 Selected States

Pounds



Statistical Methodology

Survey Procedures: Primary data used to determine these estimates were obtained from a sample of producers. Individual States maintain a list of all known milk producers and information on the size of their herd. States use all known sources of producers to ensure that their lists are as complete as possible. Generally, all large producers and a sample of small producers are included in the survey. Questionnaires are mailed to producers near the end of the month to obtain data for the first day of the month. Additional reports are obtained by telephone, as needed, to supplement the mail response. Where feasible, States utilize state and federal administrative data to estimate milk production. This eliminates duplication of data gathering by different government agencies such as Agricultural Marketing Service (AMS) Dairy Market News. Indications of milk cow inventory are also obtained in the January Cattle Survey.

Estimation Procedures: Regional Field Offices prepare these estimates by using a combination of survey indications, historic trends, and any available administrative data. Individual State estimates are reviewed by the Agricultural Statistics Board for reasonableness.

Revision Policy: Milk production, milk per cow, and number of milk cows are subject to revision the following month after initial publication for monthly States or the following quarter for the quarterly States. Normally, administrative data from Federal Market Orders, State Departments of Agriculture, or other sources are the main basis for revisions. However, administrative data for all States may not be available in time for these revisions. Estimates are again subject to revisions in February each year based on additional administrative data. In the event that additional changes are necessary, a third revision is possible in February the following year. Estimates are again reviewed after data from the five-year Census of Agriculture are available. No revisions are made after that date.

Reliability: Since all operations with dairy animals are not included in the sample, survey estimates are subject to sampling variability. Survey results are also subject to non-sampling errors such as omissions, duplications, and mistakes in reporting, recording, and processing the data. The effects of these errors cannot be measured directly. They are minimized through rigid quality controls in the data collection process and through a careful review of all reported data for consistency and reasonableness.

To assist users in evaluating the reliability of the estimates in this report, the "Root Mean Square Error" is shown for selected items in the table below. The "Root Mean Square Error" is a statistical measure based on past performance and is computed using the differences between first and final estimates. The "Root Mean Square Error" for the 24 State milk production estimates over the past 24 months is 0.3 percent. This means that chances are 2 out of 3 that the final estimate will not be above or below the current estimate of 17.2 billion pounds by more than 0.3 percent. Chances are 9 out of 10 that the difference will not exceed 0.5 percent.

Reliability of Monthly Milk Production Estimates

[Based on data for the past 24 months]

Item	Root mean square error	90 percent confidence level	Difference between first and latest estimate				
			Average	Smallest	Largest	Months	
						Below latest	Above latest
	(percent)	(percent)	(1,000)	(1,000)	(1,000)	(number)	(number)
Milk production	0.3	0.5	41	1	137	10	14
All Milk cows	0.1	0.2	6	0	18	7	13

Information Contacts

Listed below are the commodity specialists in the Livestock Branch of the National Agricultural Statistics Service to contact for additional information. E-mail inquiries may be sent to nass@usda.gov.

Travis Averill, Chief, Livestock Branch	(202) 692-0069
Scott Hollis, Head, Livestock Section	(202) 690-2424
Sherry Bertramsen – Livestock Slaughter	(202) 690-8632
Ryan Cowen – Cattle, Cattle on Feed	(202) 720-3040
Kim DaPra – Milk Production and Milk Cows	(202) 720-3278
Donnie Fike – Dairy Products	(202) 690-3347
Ralph Mondesir – Hogs and Pigs	(202) 720-3106
Suzanne Richards – Sheep and Goats	(202) 720-4448

Access to NASS Reports

For your convenience, you may access NASS reports and products the following ways:

- All reports are available electronically, at no cost, on the NASS web site: www.nass.usda.gov.
- Both national and state specific reports are available via a free e-mail subscription. To set-up this free subscription, visit www.nass.usda.gov and click on “National” or “State” in upper right corner above “search” box to create an account and select the reports you would like to receive.
- Cornell’s Mann Library has launched a new website housing NASS’s and other agency’s archived reports. The new website, <https://usda.library.cornell.edu>. All email subscriptions containing reports will be sent from the new website, <https://usda.library.cornell.edu>. To continue receiving the reports via e-mail, you will have to go to the new website, create a new account and re-subscribe to the reports. If you need instructions to set up an account or subscribe, they are located at: <https://usda.library.cornell.edu/help>. You should whitelist notifications@usda-esmis.library.cornell.edu in your email client to avoid the emails going into spam/junk folders.

For more information on NASS surveys and reports, call the NASS Agricultural Statistics Hotline at (800) 727-9540, 7:30 a.m. to 4:00 p.m. ET, or e-mail: nass@usda.gov.

The U.S. Department of Agriculture (USDA) prohibits discrimination against its customers, employees, and applicants for employment on the basis of race, color, national origin, age, disability, sex, gender identity, religion, reprisal, and where applicable, political beliefs, marital status, familial or parental status, sexual orientation, or all or part of an individual's income is derived from any public assistance program, or protected genetic information in employment or in any program or activity conducted or funded by the Department. (Not all prohibited bases will apply to all programs and/or employment activities.)

If you wish to file a Civil Rights program complaint of discrimination, complete the [USDA Program Discrimination Complaint Form](#) (PDF), found online at www.ascr.usda.gov/filing-program-discrimination-complaint-usda-customer, or at any USDA office, or call (866) 632-9992 to request the form. You may also write a letter containing all of the information requested in the form. Send your completed complaint form or letter to us by mail at U.S. Department of Agriculture, Director, Office of Adjudication, 1400 Independence Avenue, S.W., Washington, D.C. 20250-9410, by fax (202) 690-7442 or email at program.intake@usda.gov.



U.S. DEPARTMENT OF AGRICULTURE



USDA's 101st Annual

Agricultural Outlook Forum

Meeting Tomorrow's Challenges, Today

Hybrid Event • February 27-28, 2025
Crystal Gateway Marriott, Arlington VA

Registration is now open to USDA's 101st Agricultural Outlook Forum!

USDA will hold the 101st Annual Agricultural Outlook Forum on February 27-28, 2025, at the Crystal City Gateway Marriott in Arlington, VA, under the title "Meeting Tomorrow's Challenges, Today." All Forum sessions will also be livestreamed on a virtual platform.

The 2025 program will feature a presentation on agricultural markets and trade by USDA Chief Economist Seth Meyer, many distinguished speakers, and 30 breakout sessions covering timely agricultural, food market, and environmental issues. Onsite attendees will also have the opportunity to visit exhibit booths showcasing the important missions and activities of various USDA agencies as well recent USDA-funded innovations.

To see the Forum program and register, visit

[The 2025 Forum Website](#)