



ISSN: 1949-1557

Released January 24, 2025, by the National Agricultural Statistics Service (NASS), Agricultural Statistics Board, United States Department of Agriculture (USDA).

December Milk Production down 0.4 percent

Milk production in the 24 major States during December totaled 18.0 billion pounds, down 0.4 percent from December 2023. November revised production, at 17.3 billion pounds, was down 0.3 percent from November 2023. The November revision represented an increase of 89 million pounds or 0.5 percent from last month's preliminary production estimate.

Production per cow in the 24 major States averaged 2,020 pounds for December, 11 pounds below December 2023.

The number of milk cows on farms in the 24 major States was 8.91 million head, 17,000 head more than December 2023, but 8,000 head less than November 2024.

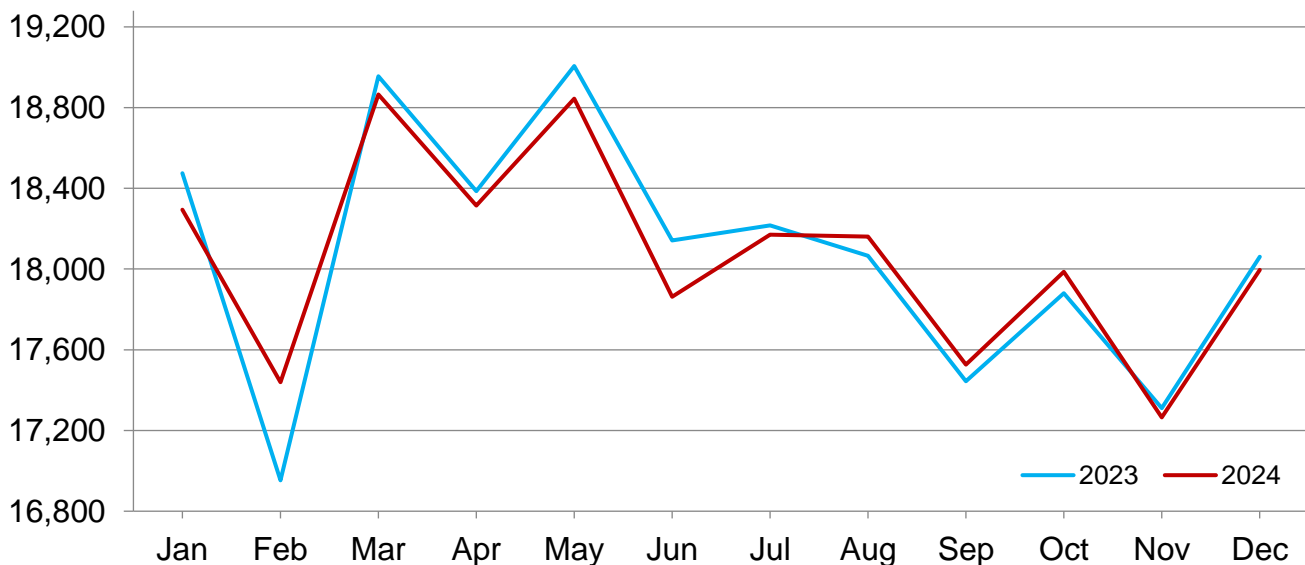
October-December Milk Production down 0.1 percent

Milk production in the United States during the October - December quarter totaled 55.5 billion pounds, down 0.1 percent from the October - December quarter last year.

The average number of milk cows in the United States during the quarter was 9.36 million head, 29,000 head more than the July - September quarter, and 10,000 head more than the same period last year.

Monthly Milk Production - 24 Selected States

Million pounds



Milk Cows and Production by Quarter – United States: 2023-2024

[May not add due to rounding]

Quarter	Milk cows ¹		Milk per cow ²		Milk production ²		
	2023	2024	2023	2024	2023	2024	Change from 2023
	(1,000 head)	(1,000 head)	(pounds)	(pounds)	(million pounds)	(million pounds)	(percent)
January-March	9,418	9,337	6,035	6,100	56,837	56,959	0.2
April-June	9,410	9,328	6,164	6,150	58,004	57,368	-1.1
July-September	9,366	9,330	5,978	6,008	55,994	56,057	0.1
October-December	9,349	9,359	5,940	5,927	55,529	55,470	-0.1
Annual	9,386	9,339	24,117	24,184	226,364	225,854	-0.2

¹ Includes dry cows. Excludes heifers not yet fresh.

² Excludes milk sucked by calves.

Milk Cows and Production by Month – 24 Selected States: 2023-2024

[May not add due to rounding]

Month	Milk cows ¹		Milk per cow ²		Milk production ²		
	2023	2024	2023	2024	2023	2024	Change from 2023
	(1,000 head)	(1,000 head)	(pounds)	(pounds)	(million pounds)	(million pounds)	(percent)
January	8,922	8,870	2,071	2,062	18,474	18,294	-1.0
February	8,939	8,888	1,897	1,962	16,953	17,439	2.9
March	8,952	8,892	2,118	2,122	18,956	18,865	-0.5
April	8,941	8,888	2,056	2,061	18,386	18,314	-0.4
May	8,945	8,886	2,125	2,121	19,006	18,845	-0.8
June	8,925	8,875	2,033	2,013	18,141	17,863	-1.5
July	8,909	8,878	2,045	2,047	18,216	18,170	-0.3
August	8,906	8,887	2,028	2,044	18,065	18,161	0.5
September	8,907	8,905	1,958	1,968	17,444	17,527	0.5
October	8,900	8,925	2,009	2,015	17,880	17,987	0.6
November	8,891	8,919	1,947	1,936	17,311	17,265	-0.3
December	8,894	8,911	2,031	2,020	18,061	17,996	-0.4
Annual	8,919	8,894	24,318	24,368	216,893	216,726	(Z)

(Z) Less than half of the unit shown.

¹ Includes dry cows. Excludes heifers not yet fresh.

² Excludes milk sucked by calves.

Estimated Milk Cows and Production by Month – United States: 2023-2024

[May not add due to rounding]

Month	Milk cows ¹		Milk per cow ²		Milk production ²		
	2023	2024	2023	2024	2023	2024	Change from 2023
	(1,000 head)	(1,000 head)	(pounds)	(pounds)	(million pounds)	(million pounds)	(percent)
January	9,401	9,323	2,054	2,047	19,308	19,083	-1.2
February	9,419	9,343	1,881	1,947	17,718	18,195	2.7
March	9,433	9,346	2,100	2,106	19,811	19,681	-0.7
April	9,414	9,333	2,040	2,046	19,204	19,095	-0.6
May	9,418	9,331	2,108	2,106	19,852	19,648	-1.0
June	9,397	9,320	2,016	1,998	18,948	18,625	-1.7
July	9,368	9,317	2,027	2,030	18,985	18,912	-0.4
August	9,365	9,328	2,010	2,026	18,828	18,902	0.4
September	9,366	9,346	1,941	1,952	18,181	18,243	0.3
October	9,355	9,366	1,993	2,001	18,645	18,738	0.5
November	9,345	9,360	1,932	1,921	18,051	17,985	-0.4
December	9,348	9,351	2,015	2,005	18,833	18,747	-0.5
Annual	9,386	9,339	24,117	24,184	226,364	225,854	-0.2

¹ Includes dry cows. Excludes heifers not yet fresh.

² Excludes milk sucked by calves.

Milk Cows and Production – 24 Selected States: December 2023 and 2024

[May not add due to rounding]

State	Milk cows ¹		Milk per cow ²		Milk production ²		Change from 2023
	2023	2024	2023	2024	2023	2024	
	(1,000 head)	(1,000 head)	(pounds)	(pounds)	(million pounds)	(million pounds)	(percent)
Arizona	199	189	2,085	2,085	415	394	-5.1
California	1,710	1,709	2,015	1,880	3,446	3,213	-6.8
Colorado	197	205	2,190	2,185	431	448	3.9
Florida	98	95	1,705	1,720	167	163	-2.4
Georgia	91	85	1,870	1,980	170	168	-1.2
Idaho	663	680	2,060	2,080	1,366	1,414	3.5
Illinois	79	77	1,820	1,830	144	141	-2.1
Indiana	190	190	1,995	2,010	379	382	0.8
Iowa	239	245	2,060	2,080	492	510	3.7
Kansas	176	180	1,990	1,995	350	359	2.6
Michigan	439	440	2,290	2,315	1,005	1,019	1.4
Minnesota	450	440	1,935	1,965	871	865	-0.7
New Mexico	250	240	2,045	2,060	511	494	-3.3
New York	630	630	2,120	2,135	1,336	1,345	0.7
Ohio	255	250	1,870	1,910	477	478	0.2
Oregon	120	111	1,725	1,710	207	190	-8.2
Pennsylvania	465	465	1,765	1,765	821	821	-
South Dakota	207	215	1,895	1,940	392	417	6.4
Texas	635	675	2,170	2,195	1,378	1,482	7.5
Utah	90	91	1,930	1,935	174	176	1.1
Vermont	116	113	1,800	1,840	209	208	-0.5
Virginia	68	66	1,750	1,780	119	117	-1.7
Washington	257	255	2,005	1,975	515	504	-2.1
Wisconsin	1,270	1,265	2,115	2,125	2,686	2,688	0.1
24-State Total	8,894	8,911	2,031	2,020	18,061	17,996	-0.4

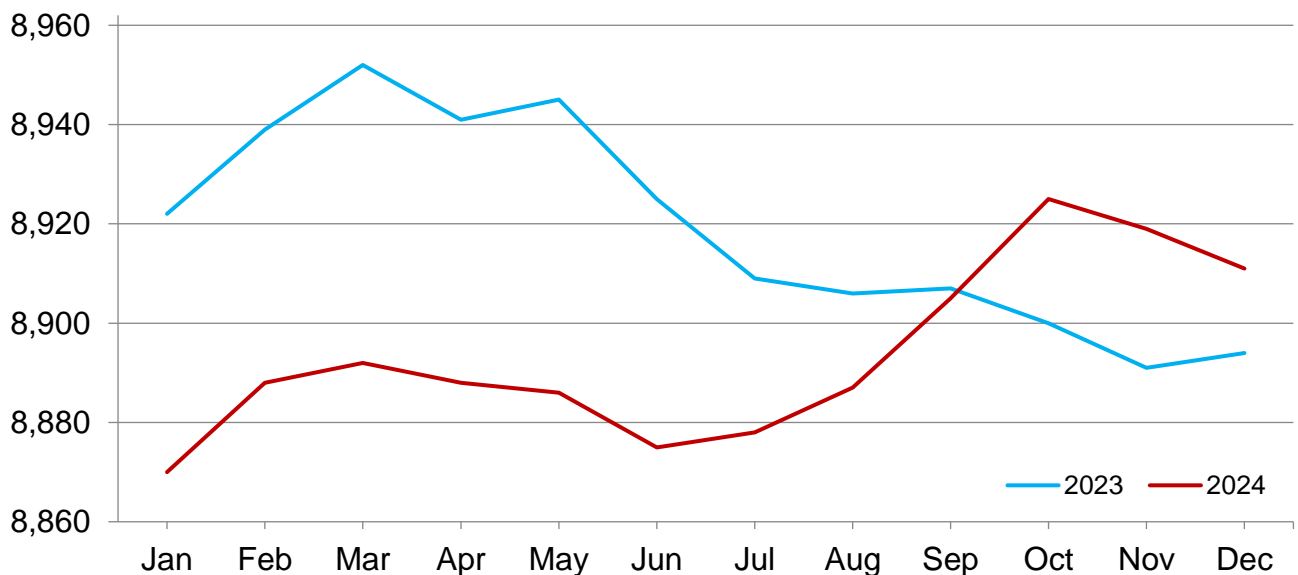
- Represents zero.

¹ Includes dry cows. Excludes heifers not yet fresh.

² Excludes milk sucked by calves.

Monthly Milk Cows - 24 Selected States

Thousand head



Milk Cows and Production – 24 Selected States: November 2023 and 2024

[May not add due to rounding]

State	Milk cows ¹		Milk per cow ²		Milk production ²		Change from 2023
	2023	2024	2023	2024	2023	2024	
	(1,000 head)	(1,000 head)	(pounds)	(pounds)	(million pounds)	(million pounds)	(percent)
Arizona	199	189	1,960	1,955	390	369	-5.4
California	1,710	1,709	1,905	1,755	3,258	2,999	-7.9
Colorado	197	204	2,105	2,105	415	429	3.4
Florida	98	96	1,630	1,600	160	154	-3.8
Georgia	90	85	1,745	1,890	157	161	2.5
Idaho	663	680	1,995	2,040	1,323	1,387	4.8
Illinois	79	77	1,720	1,740	136	134	-1.5
Indiana	190	190	1,915	1,950	364	371	1.9
Iowa	239	244	1,990	1,995	476	487	2.3
Kansas	176	180	1,945	1,940	342	349	2.0
Michigan	439	440	2,210	2,235	970	983	1.3
Minnesota	449	442	1,855	1,890	833	835	0.2
New Mexico	255	240	1,950	1,960	497	470	-5.4
New York	630	630	2,040	2,065	1,285	1,301	1.2
Ohio	255	251	1,800	1,830	459	459	-
Oregon	120	116	1,675	1,675	201	194	-3.5
Pennsylvania	466	465	1,680	1,695	783	788	0.6
South Dakota	202	215	1,860	1,900	376	409	8.8
Texas	635	675	2,090	2,110	1,327	1,424	7.3
Utah	88	91	1,875	1,870	165	170	3.0
Vermont	116	113	1,735	1,760	201	199	-1.0
Virginia	68	66	1,670	1,690	114	112	-1.8
Washington	257	255	1,925	1,905	495	486	-1.8
Wisconsin	1,270	1,266	2,035	2,050	2,584	2,595	0.4
24-State Total	8,891	8,919	1,947	1,936	17,311	17,265	-0.3

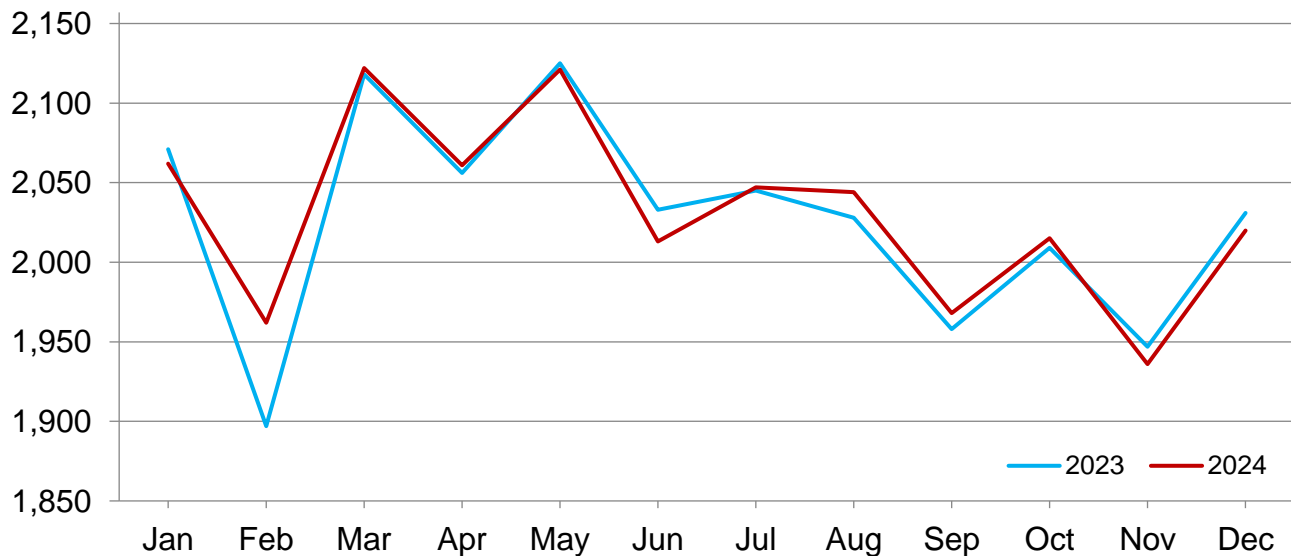
- Represents zero.

¹ Includes dry cows. Excludes heifers not yet fresh.

² Excludes milk sucked by calves.

Monthly Milk Per Cow - 24 Selected States

Pounds



Milk Cows and Production – States and United States: Revised July - September 2023 and 2024

[May not add due to rounding]

State	July - September milk cows ¹		July - September milk production ²		
	2023	2024	2023	2024	Change from 2023
	(1,000 head)	(1,000 head)	(million pounds)	(million pounds)	(percent)
Alabama	2.0	2.0	6.0	5.5	-8.3
Alaska	(D)	(D)	(D)	(D)	(NA)
Arizona	200.0	191.0	1,119.0	1,075.0	-3.9
Arkansas	2.5	2.0	7.0	6.0	-14.3
California	1,713.0	1,708.0	9,841.0	9,907.0	0.7
Colorado	199.0	201.0	1,298.0	1,304.0	0.5
Connecticut	17.5	17.5	105.0	105.0	-
Delaware	2.6	2.6	11.2	10.8	-3.6
Florida	99.0	99.0	476.0	471.0	-1.1
Georgia	90.0	85.0	467.0	467.0	-
Hawaii	(D)	(D)	(D)	(D)	(NA)
Idaho	666.0	670.0	4,284.0	4,360.0	1.8
Illinois	79.0	77.0	414.0	405.0	-2.2
Indiana	190.0	189.0	1,120.0	1,121.0	0.1
Iowa	241.0	241.0	1,486.0	1,484.0	-0.1
Kansas	170.0	179.0	1,004.0	1,066.0	6.2
Kentucky	44.0	41.0	215.0	198.0	-7.9
Louisiana	7.0	6.5	20.0	18.0	-10.0
Maine	25.0	24.0	136.0	136.0	-
Maryland	40.0	38.0	207.0	196.0	-5.3
Massachusetts	9.0	9.0	44.0	44.0	-
Michigan	439.0	436.0	3,044.0	3,015.0	-1.0
Minnesota	451.0	442.0	2,648.0	2,590.0	-2.2
Mississippi	5.5	5.0	15.0	13.5	-10.0
Missouri	60.0	56.0	203.0	186.0	-8.4
Montana	9.0	8.5	52.0	49.0	-5.8
Nebraska	54.0	50.0	329.0	309.0	-6.1
Nevada	32.0	31.0	192.0	196.0	2.1
New Hampshire	9.5	9.5	52.0	50.0	-3.8
New Jersey	3.9	3.9	21.0	20.0	-4.8
New Mexico	268.0	239.0	1,599.0	1,444.0	-9.7
New York	630.0	630.0	4,073.0	4,044.0	-0.7
North Carolina	38.0	37.0	213.0	201.0	-5.6
North Dakota	11.0	9.5	66.0	57.0	-13.6
Ohio	254.0	252.0	1,417.0	1,422.0	0.4
Oklahoma	37.0	41.0	149.0	176.0	18.1
Oregon	120.0	118.0	635.0	624.0	-1.7
Pennsylvania	466.0	465.0	2,414.0	2,397.0	-0.7
Rhode Island	0.5	0.5	2.4	2.1	-12.5
South Carolina	8.0	8.0	32.0	32.0	-
South Dakota	197.0	214.0	1,161.0	1,263.0	8.8
Tennessee	25.0	24.0	111.0	108.0	-2.7
Texas	635.0	658.0	4,010.0	4,261.0	6.3
Utah	90.0	90.0	528.0	532.0	0.8
Vermont	117.0	113.0	634.0	610.0	-3.8
Virginia	68.0	66.0	350.0	337.0	-3.7
Washington	257.0	260.0	1,567.0	1,578.0	0.7
West Virginia	4.5	4.0	16.0	14.5	-9.4
Wisconsin	1,269.0	1,267.0	8,136.0	8,081.0	-0.7
Wyoming	9.5	9.0	62.5	63.9	2.2
Other States ³	0.8	0.9	1.7	2.1	23.5
United States	9,366.0	9,330.0	55,994.0	56,057.0	0.1

- Represents zero.

(D) Withheld to avoid disclosing data for individual operations.

(NA) Not available.

¹ Includes dry cows. Excludes heifers not yet fresh.

² Excludes milk sucked by calves.

³ Other States includes Alaska and Hawaii.

Milk Cows and Production – States and United States: Preliminary October - December 2023 and 2024

[May not add due to rounding]

State	October - December milk cows ¹		October - December milk production ²		
	2023	2024	2023	2024	Change from 2023
	(1,000 head)	(1,000 head)	(million pounds)	(million pounds)	(percent)
Alabama	2.0	2.0	5.0	6.0	20.0
Alaska	(D)	(D)	(D)	(D)	(NA)
Arizona	200.0	190.0	1,199.0	1,136.0	-5.3
Arkansas	2.5	2.0	7.0	5.5	-21.4
California	1,710.0	1,709.0	10,015.0	9,408.0	-6.1
Colorado	197.0	205.0	1,277.0	1,327.0	3.9
Connecticut	17.5	17.5	104.0	104.0	-
Delaware	2.6	2.6	11.4	11.2	-1.8
Florida	99.0	97.0	485.0	471.0	-2.9
Georgia	90.0	85.0	487.0	493.0	1.2
Hawaii	(D)	(D)	(D)	(D)	(NA)
Idaho	663.0	678.0	4,068.0	4,223.0	3.8
Illinois	79.0	77.0	418.0	412.0	-1.4
Indiana	190.0	190.0	1,118.0	1,129.0	1.0
Iowa	239.0	244.0	1,460.0	1,505.0	3.1
Kansas	176.0	180.0	1,045.0	1,071.0	2.5
Kentucky	43.0	41.0	211.0	200.0	-5.2
Louisiana	7.0	7.0	22.0	21.0	-4.5
Maine	24.0	24.0	130.0	134.0	3.1
Maryland	40.0	38.0	210.0	201.0	-4.3
Massachusetts	9.0	9.0	43.0	43.0	-
Michigan	439.0	440.0	2,980.0	3,025.0	1.5
Minnesota	450.0	441.0	2,577.0	2,569.0	-0.3
Mississippi	5.5	5.0	16.0	14.5	-9.4
Missouri	60.0	56.0	201.0	187.0	-7.0
Montana	9.0	8.5	50.0	48.0	-4.0
Nebraska	53.0	49.0	326.0	307.0	-5.8
Nevada	32.0	31.0	194.0	200.0	3.1
New Hampshire	9.5	9.5	50.0	50.0	-
New Jersey	4.0	3.8	21.0	20.0	-4.8
New Mexico	255.0	241.0	1,528.0	1,461.0	-4.4
New York	630.0	630.0	3,963.0	3,988.0	0.6
North Carolina	38.0	37.0	217.0	203.0	-6.5
North Dakota	10.5	9.5	60.0	56.0	-6.7
Ohio	255.0	251.0	1,406.0	1,409.0	0.2
Oklahoma	37.0	40.0	167.0	184.0	10.2
Oregon	120.0	115.0	616.0	592.0	-3.9
Pennsylvania	466.0	465.0	2,401.0	2,411.0	0.4
Rhode Island	0.5	0.5	2.4	2.2	-8.3
South Carolina	8.0	8.0	35.0	35.0	-
South Dakota	202.0	215.0	1,155.0	1,245.0	7.8
Tennessee	25.0	24.0	114.0	110.0	-3.5
Texas	635.0	675.0	4,086.0	4,408.0	7.9
Utah	89.0	91.0	510.0	520.0	2.0
Vermont	116.0	113.0	619.0	615.0	-0.6
Virginia	68.0	66.0	350.0	342.0	-2.3
Washington	257.0	256.0	1,527.0	1,508.0	-1.2
West Virginia	4.5	4.0	16.0	14.5	-9.4
Wisconsin	1,270.0	1,266.0	7,962.0	7,980.0	0.2
Wyoming	9.0	9.0	62.0	62.9	1.5
Other States ³	0.8	0.8	1.7	1.9	11.8
United States	9,349.0	9,359.0	55,529.0	55,470.0	-0.1

- Represents zero.

(D) Withheld to avoid disclosing data for individual operations.

(NA) Not available.

¹ Includes dry cows. Excludes heifers not yet fresh.

² Excludes milk sucked by calves.

³ Other States includes Alaska and Hawaii.

Statistical Methodology

Survey Procedures: Primary data used to determine these estimates were obtained from a sample of producers. Individual States maintain a list of all known milk producers and information on the size of their herd. States use all known sources of producers to ensure that their lists are as complete as possible. Generally, all large producers and a sample of small producers are included in the survey. Questionnaires are mailed to producers near the end of the month to obtain data for the first day of the month. Additional reports are obtained by telephone, as needed, to supplement the mail response. Where feasible, States utilize state and federal administrative data to estimate milk production. This eliminates duplication of data gathering by different government agencies. Indications of milk cow inventory are also obtained in the January Cattle Surveys.

Estimation Procedures: Regional Field Offices prepare these estimates by using a combination of survey indications, historic trends, and any available administrative data. Individual State estimates are reviewed by the Agricultural Statistics Board for reasonableness.

Revision Policy: Milk production, milk per cow, and number of milk cows are subject to revision the following month after initial publication for monthly States or the following quarter for the quarterly States. Normally, administrative data from Federal Market Orders, State Departments of Agriculture, or other sources are the main basis for revisions. However, administrative data for all States may not be available in time for these revisions. Estimates are again subject to revisions in February each year based on additional administrative data. In the event that additional changes are necessary, a third revision is possible in February the following year. Estimates are again reviewed after data from the five-year Census of Agriculture are available. No revisions are made after that date.

Reliability: Since all operations with dairy animals are not included in the sample, survey estimates are subject to sampling variability. Survey results are also subject to non-sampling errors such as omissions, duplications, and mistakes in reporting, recording, and processing the data. The effects of these errors cannot be measured directly. They are minimized through rigid quality controls in the data collection process and through a careful review of all reported data for consistency and reasonableness.

To assist users in evaluating the reliability of the estimates in this report, the "Root Mean Square Error" is shown for selected items on the next page. The "Root Mean Square Error" is a statistical measure based on past performance and is computed using the differences between first and final estimates. The "Root Mean Square Error" for milk production estimates over the past 20 quarters is 0.2 percent. This means that chances are 2 out of 3 that the final estimate will not be above or below the current estimate of 55.5 billion pounds by more than 0.2 percent. Chances are 9 out of 10 that the difference will not exceed 0.3 percent.

Reliability of Quarterly Milk Production Estimates

[Based on data for the past 20 quarters]

Item	Root mean square error	90 percent confidence level	Difference between first and latest estimate				
			Average	Smallest	Largest	Quarters	
						Below latest	Above latest
	(percent)	(percent)	(1,000)	(1,000)	(1,000)	(number)	(number)
Milk production	0.2	0.3	79	4	216	9	11
All milk cows	0.1	0.2	9	1	29	9	11

Information Contacts

Listed below are the commodity specialists in the Livestock Branch of the National Agricultural Statistics Service to contact for additional information. E-mail inquiries may be sent to nass@usda.gov.

Travis Averill, Chief, Livestock Branch	(202) 692-0069
Scott Hollis, Head, Livestock Section	(202) 690-2424
Sherry Bertramsen – Livestock Slaughter	(202) 690-8632
Ryan Cowen – Cattle, Cattle on Feed	(202) 720-3040
Kim DaPra – Milk Production and Milk Cows	(202) 720-3278
Donnie Fike – Dairy Products	(202) 690-3347
Ralph Mondesir – Hogs and Pigs	(202) 720-3106
Suzanne Richards – Sheep and Goats	(202) 720-4448

Access to NASS Reports

For your convenience, you may access NASS reports and products the following ways:

- All reports are available electronically, at no cost, on the NASS web site: www.nass.usda.gov.
- Both national and state specific reports are available via a free e-mail subscription. To set-up this free subscription, visit www.nass.usda.gov and click on “National” or “State” in upper right corner above “search” box to create an account and select the reports you would like to receive.
- Cornell’s Mann Library has launched a new website housing NASS’s and other agency’s archived reports. The new website, <https://usda.library.cornell.edu>. All email subscriptions containing reports will be sent from the new website, <https://usda.library.cornell.edu>. To continue receiving the reports via e-mail, you will have to go to the new website, create a new account and re-subscribe to the reports. If you need instructions to set up an account or subscribe, they are located at: <https://usda.library.cornell.edu/help>. You should whitelist notifications@usda-esmis.library.cornell.edu in your email client to avoid the emails going into spam/junk folders.

For more information on NASS surveys and reports, call the NASS Agricultural Statistics Hotline at (800) 727-9540, 7:30 a.m. to 4:00 p.m. ET, or e-mail: nass@usda.gov.

The U.S. Department of Agriculture (USDA) prohibits discrimination against its customers, employees, and applicants for employment on the basis of race, color, national origin, age, disability, sex, gender identity, religion, reprisal, and where applicable, political beliefs, marital status, familial or parental status, sexual orientation, or all or part of an individual's income is derived from any public assistance program, or protected genetic information in employment or in any program or activity conducted or funded by the Department. (Not all prohibited bases will apply to all programs and/or employment activities.)

If you wish to file a Civil Rights program complaint of discrimination, complete the [USDA Program Discrimination Complaint Form](#) (PDF), found online at www.ascr.usda.gov/filing-program-discrimination-complaint-usda-customer, or at any USDA office, or call (866) 632-9992 to request the form. You may also write a letter containing all of the information requested in the form. Send your completed complaint form or letter to us by mail at U.S. Department of Agriculture, Director, Office of Adjudication, 1400 Independence Avenue, S.W., Washington, D.C. 20250-9410, by fax (202) 690-7442 or email at program.intake@usda.gov.



U.S. DEPARTMENT OF AGRICULTURE



USDA's 101st Annual

Agricultural Outlook Forum

Meeting Tomorrow's Challenges, Today

Hybrid Event • February 27-28, 2025
Crystal Gateway Marriott, Arlington VA

Registration is now open to USDA's 101st Agricultural Outlook Forum!

USDA will hold the 101st Annual Agricultural Outlook Forum on February 27-28, 2025, at the Crystal City Gateway Marriott in Arlington, VA, under the title "Meeting Tomorrow's Challenges, Today." All Forum sessions will also be livestreamed on a virtual platform.

The 2025 program will feature a presentation on agricultural markets and trade by USDA Chief Economist Seth Meyer, many distinguished speakers, and 30 breakout sessions covering timely agricultural, food market, and environmental issues. Onsite attendees will also have the opportunity to visit exhibit booths showcasing the important missions and activities of various USDA agencies as well recent USDA-funded innovations.

To see the Forum program and register, visit

[The 2025 Forum Website](#)