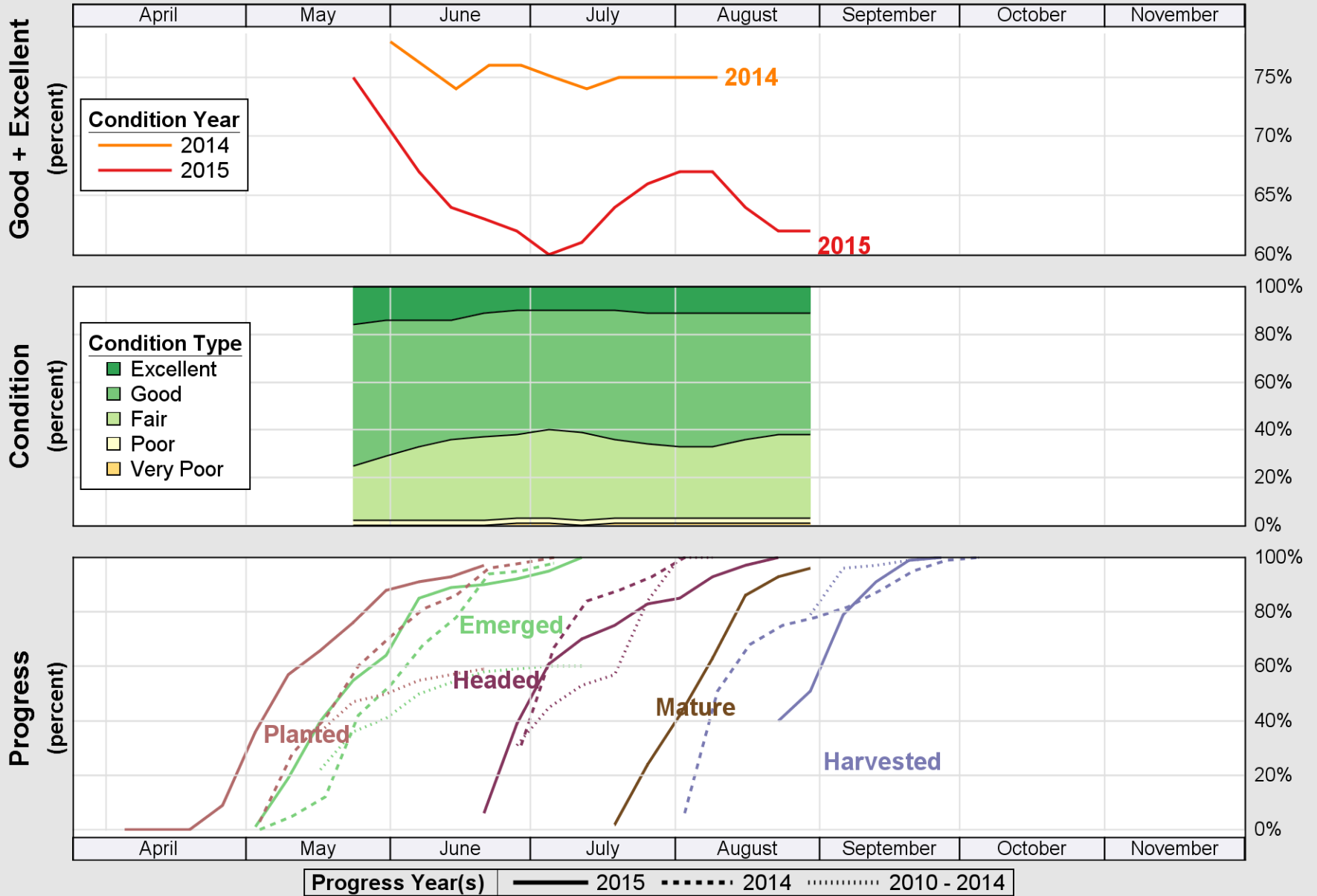


USDA

Crop Progress and Condition: Barley in Michigan , 2015

NASS

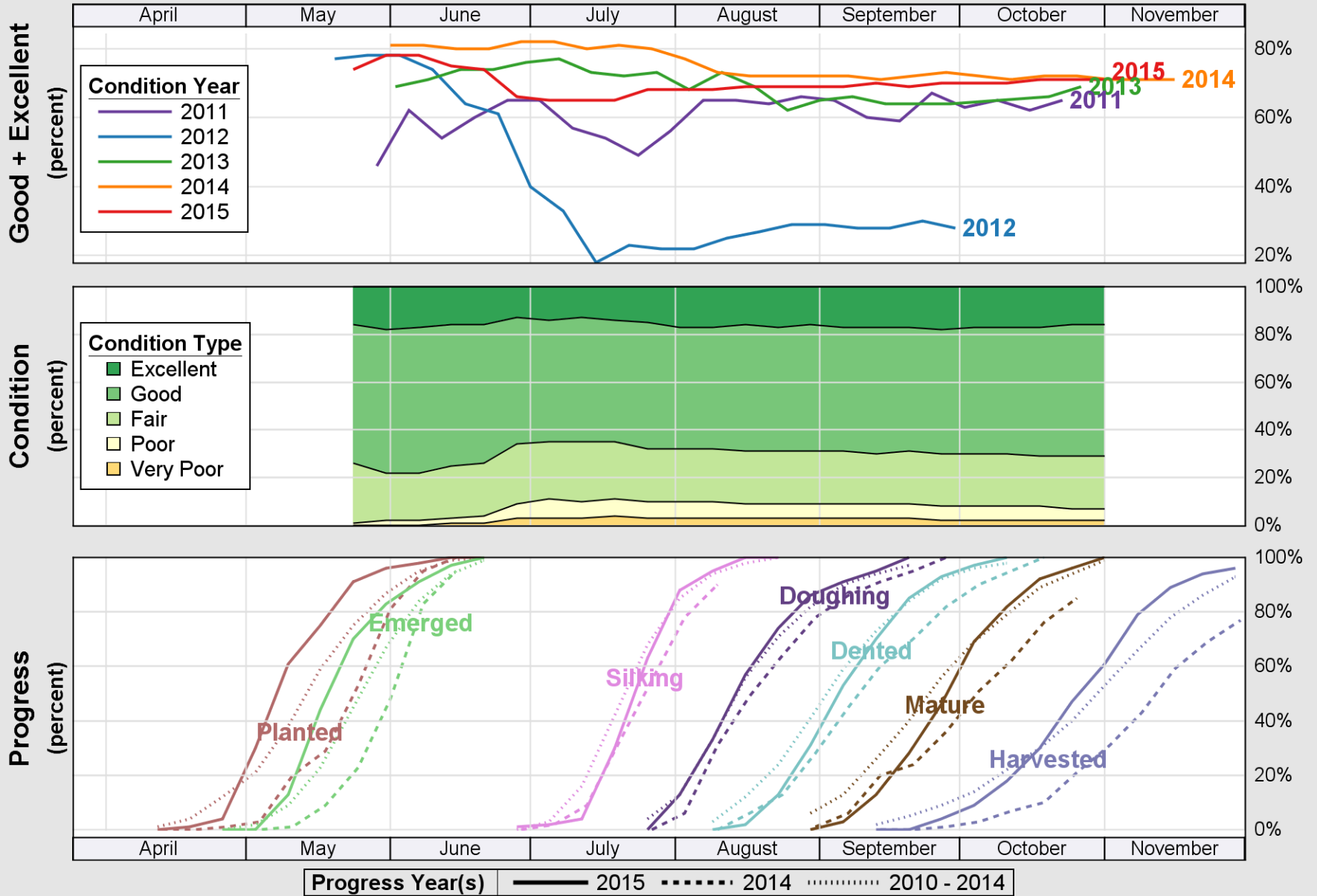


Source: National Agricultural Statistics Service (NASS), Crop Progress Report

USDA

Crop Progress and Condition: Corn in Michigan , 2015

NASS

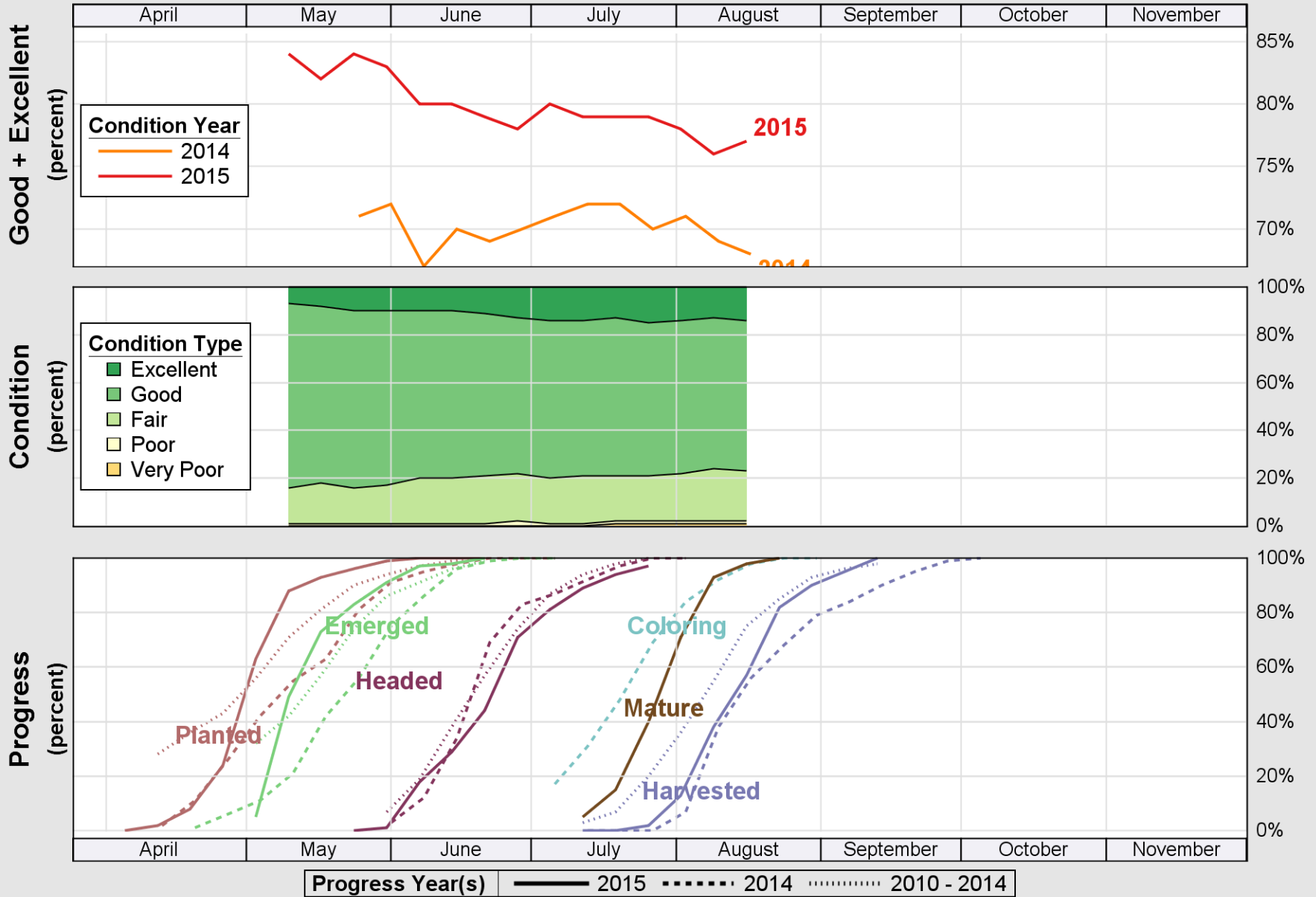


Source: National Agricultural Statistics Service (NASS), Crop Progress Report

USDA

Crop Progress and Condition: Oats in Michigan , 2015

NASS

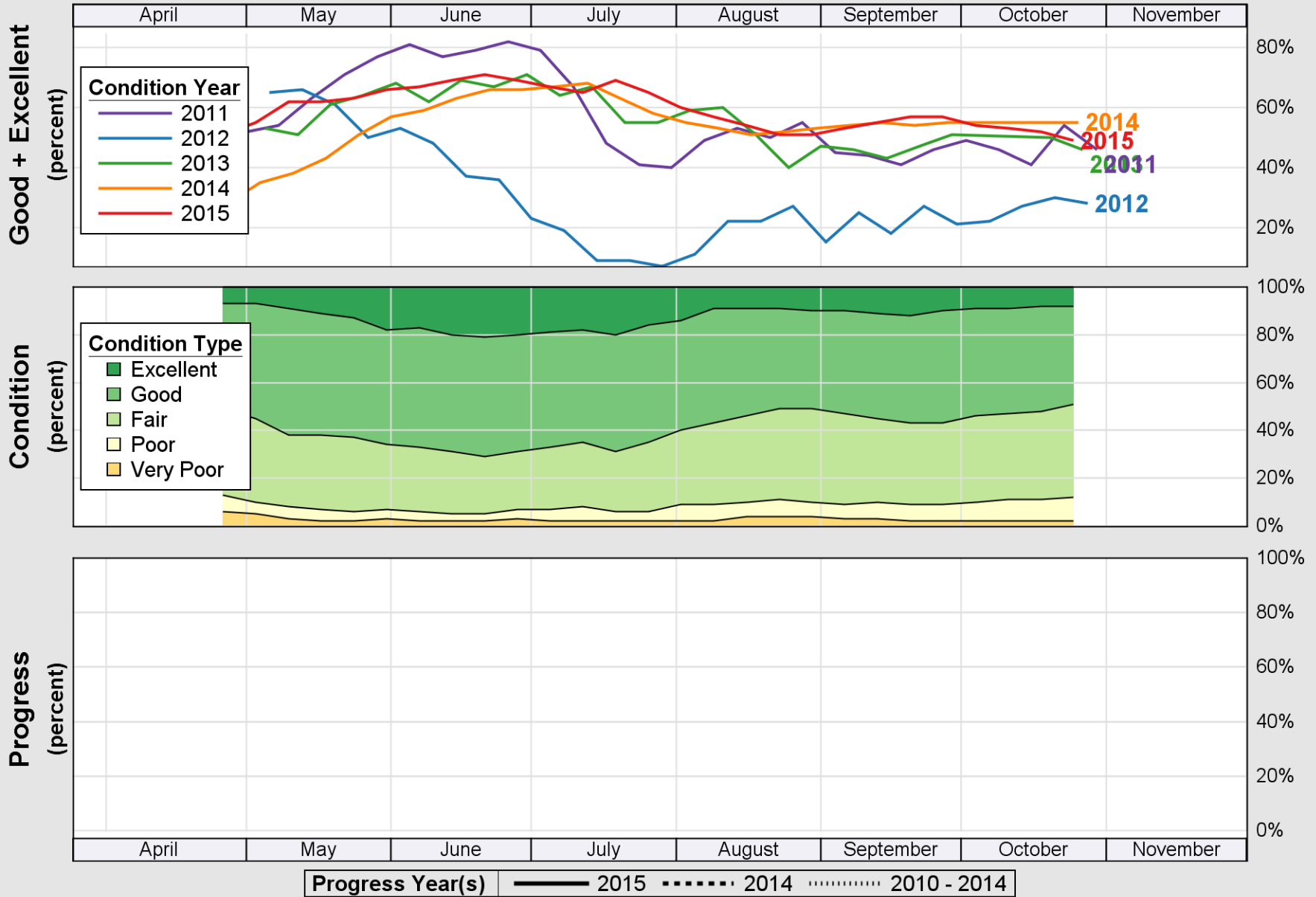


Source: National Agricultural Statistics Service (NASS), Crop Progress Report

USDA

Crop Progress and Condition: Pasture and Range in Michigan , 2015

NASS

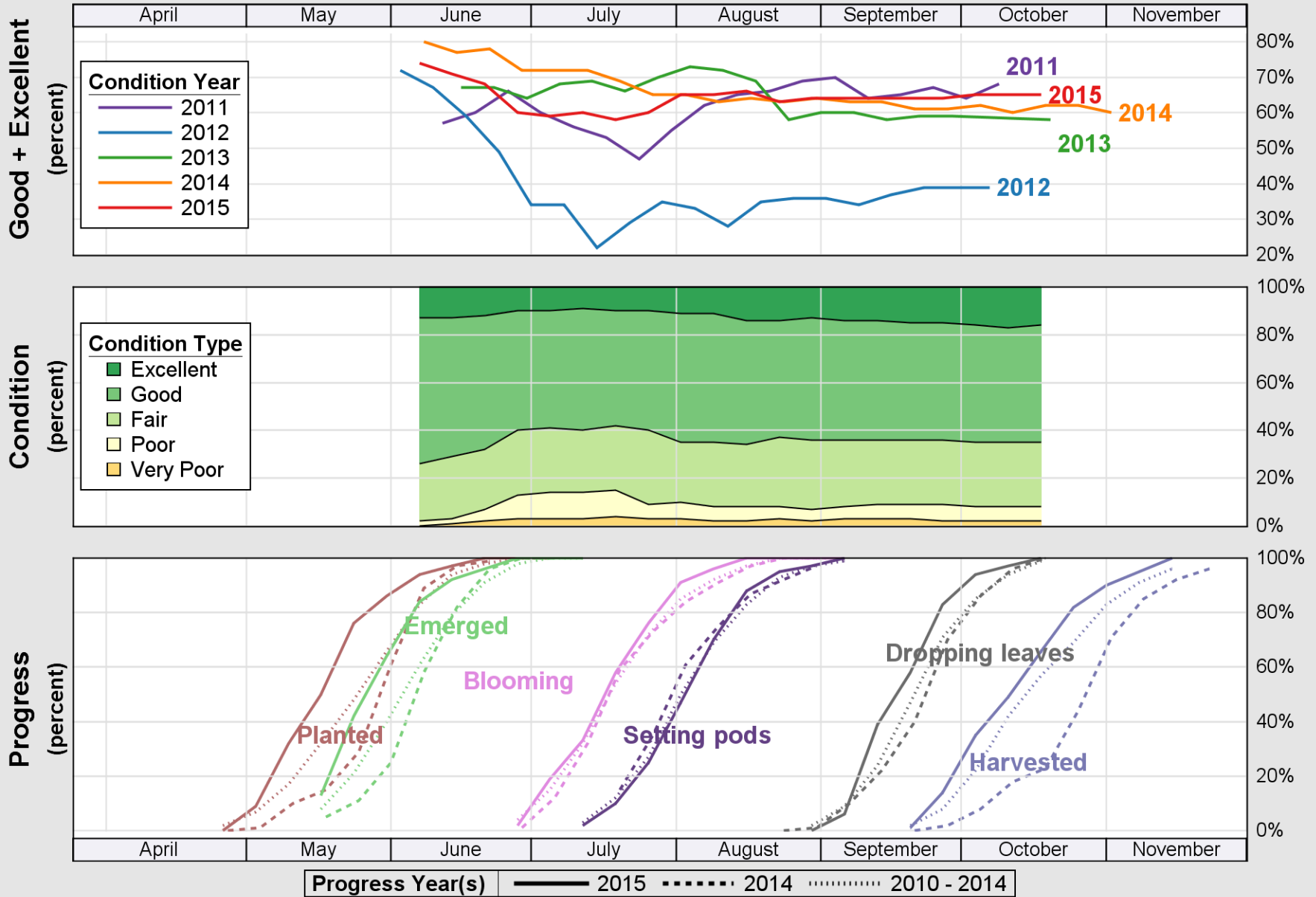


Source: National Agricultural Statistics Service (NASS), Crop Progress Report

USDA

Crop Progress and Condition: Soybeans in Michigan , 2015

NASS

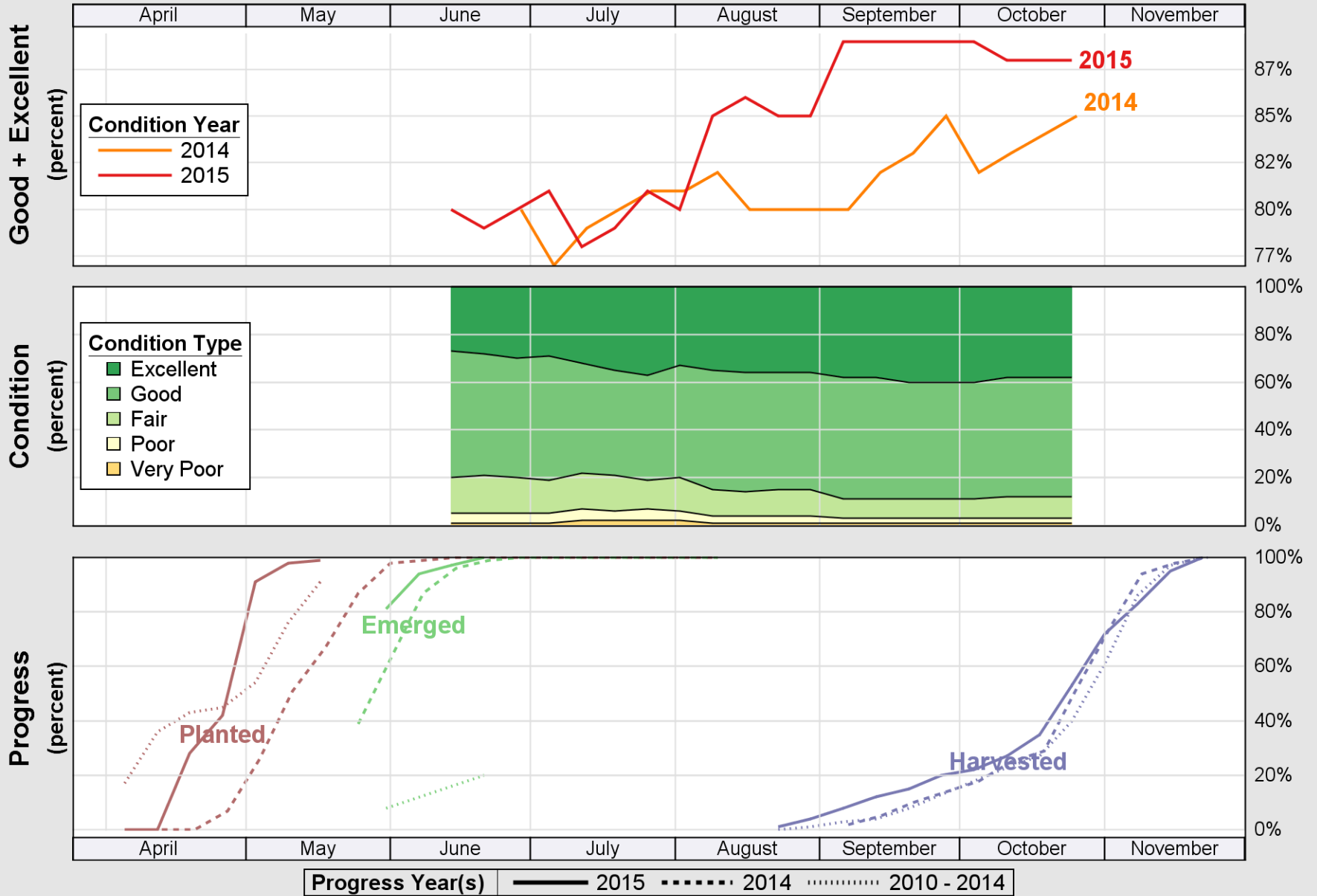


Source: National Agricultural Statistics Service (NASS), Crop Progress Report

USDA

Crop Progress and Condition: Sugar Beets in Michigan , 2015

NASS

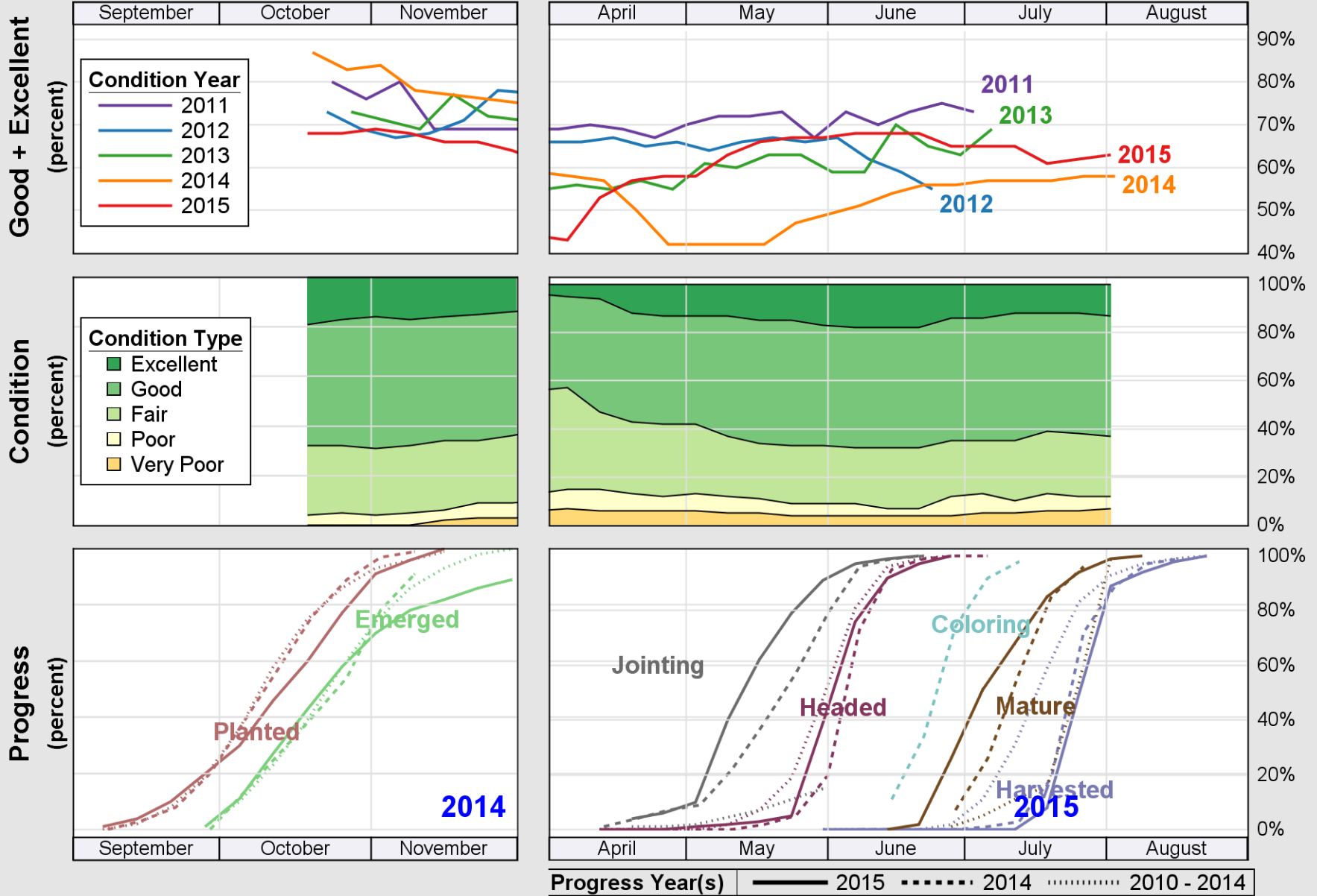


Source: National Agricultural Statistics Service (NASS), Crop Progress Report

USDA

Crop Progress and Condition: Winter Wheat in Michigan , 2015

NASS



Source: National Agricultural Statistics Service (NASS), Crop Progress Report