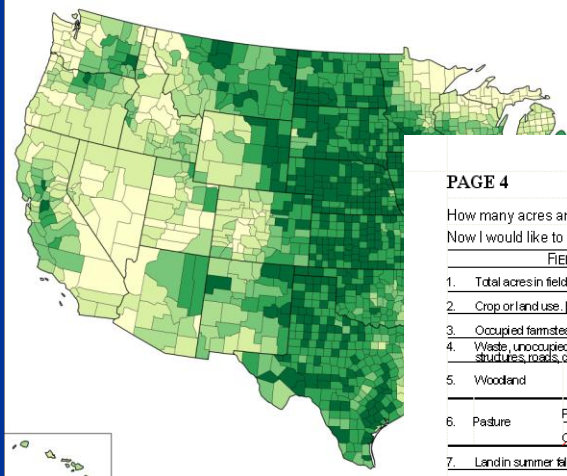


# USDA / NASS

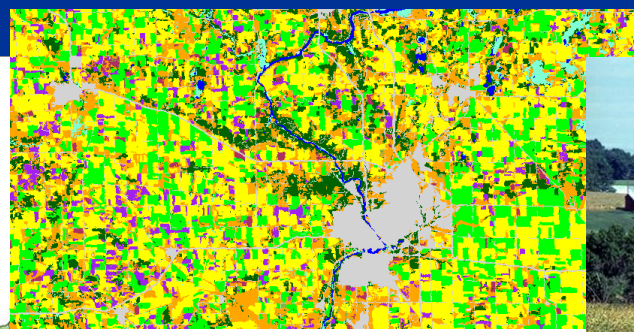
## National Agricultural Statistics Service



Acres of Land in Farms as Percent of Land Area in Acres:



02-M078  
U.S. Department of Agriculture, National Agricultural Statistics Service



PAGE 4 SECTION D - CROPS AND LAND USE ON TRACT

How many acres are inside this blue tract boundary drawn on the photo (map)? ..... 800 **3**  
 Now I would like to ask about each field inside this blue tract boundary and its use during 2006.

FIELD NUMBER	01	02	03	04	05
1. Total acres in field	828 <b>111.0</b>	828 <b>100.3</b>	828 <b>97.0</b>	828 .	828 .
2. Crop or land use. [Specify]	<b>CORN</b>	<b>SB</b>	<b>SW</b>		
3. Occupied farmstead or dwelling	843 .	843 .	843 .	843 .	843 .
4. Waste, unoccupied dwellings, buildings and structures, roads, ditches, etc.	841 .	841 .	841 .	841 .	841 .
5. Woodland	83 .	83 .	83 .	83 .	83 .
	NP = Not Pastured P = Pastured [Check (Z) box]				
	<input type="checkbox"/> NP <input type="checkbox"/> P	<input type="checkbox"/> NP <input type="checkbox"/> P	<input type="checkbox"/> NP <input type="checkbox"/> P	<input type="checkbox"/> NP <input type="checkbox"/> P	<input type="checkbox"/> NP <input type="checkbox"/> P
6. Pasture	842 .	842 .	842 .	842 .	842 .
	Permanent (not in crop rotation)				
	<input type="checkbox"/> Permanent <input type="checkbox"/> Cropland	<input type="checkbox"/> Permanent <input type="checkbox"/> Cropland	<input type="checkbox"/> Permanent <input type="checkbox"/> Cropland	<input type="checkbox"/> Permanent <input type="checkbox"/> Cropland	<input type="checkbox"/> Permanent <input type="checkbox"/> Cropland
7. Land in summer fallow	847 .	847 .	847 .	847 .	847 .
8. Idle cropland - idle all during 2006	857 .	857 .	857 .	857 .	857 .
9. Two crops planted in this field or two uses of the same crop.	<input type="checkbox"/> Yes <input type="checkbox"/> No	<input type="checkbox"/> Yes <input type="checkbox"/> No	<input type="checkbox"/> Yes <input type="checkbox"/> No	<input type="checkbox"/> Yes <input type="checkbox"/> No	<input type="checkbox"/> Yes <input type="checkbox"/> No
[Specify second crop or use]	844 .	844 .	844 .	844 .	844 .
Acres					



# NASS Mission

- NASS is committed to providing timely, accurate, and useful statistics in service to U.S. agriculture.
  - Conduct surveys year-round and provide objective, unbiased statistics on a predetermined schedule.
  - Conduct the Census of Agriculture every five years - only source of consistent, comparable, & detailed agricultural data for U.S. counties.
  - Safeguard the privacy of data providers.

# GIS Spatial and Statistical Data

- <http://www.nass.usda.gov>
- State/county survey & census data
- State & county-level boundaries
- Cropland Data Layer & NDVI
- Interactive maps & tables
- Static maps & graphs

# http://www.nass.usda.gov

The screenshot shows the NASS website homepage. The navigation bar at the top includes links for Home, About NASS, Newsroom, **Publications**, **Data and Statistics**, **Census**, **Surveys**, Help, and Contact Us. The **Publications**, **Data and Statistics**, **Census**, and **Surveys** links are circled in red. Below the navigation bar, the main content area features a search box, a 'You are here' breadcrumb, a mission statement, and a 'Headlines' section. The 'Headlines' section includes links for 'NASS to Hold Public Forum in Salt Lake City May 17', 'Agricultural Identification Survey - Frequently Asked Questions', and 'Estimated Release Dates for Annual County Data for Crop Acreage, Yield, and Production'. A 'Today's Reports from NASS' section is also present, with 'Today's Reports' circled in red. Below this, there are links for 'Cotton Ginnings' and 'Cold Storage'. A 'Quick Stats' link is circled in red, with the text '(Agricultural Statistics Data Base)' next to it. On the right side, there is a 'I Want To...' section with a list of options, including 'Find charts or maps or geospatial data', which is circled in red. Below this is a 'Find NASS Publications' section with search criteria like Date, Commodity, Keyword, Release Day, and Title. At the bottom, there is a 'Syndication' section with a 'Today's Reports' link.

Home About NASS Newsroom **Publications** **Data and Statistics** **Census** **Surveys** Help Contact Us

Search NASS  
   
 All NASS  
 Advanced Search  
 Search Tips

Browse NASS by Subject  
 Crops and Plants  
 Demographics  
 Economics  
 Environmental  
 Livestock and Animals  
 Charts and Maps  
 Education and Outreach

Statistics by State  
 Select a State

You are here: Home /

The National Agricultural Statistics Service provides timely, accurate, and useful statistics in service to U.S. agriculture.

**Headlines**

**NASS to Hold Public Forum in Salt Lake City May 17**

**Agricultural Identification Survey - Frequently Asked Questions**

**Estimated Release Dates for Annual County Data for Crop Acreage, Yield, and Production**

**Today's Reports from NASS**

March 22, 2007

**Cotton Ginnings**  
 Released at 08:30 A.M. ET

**Cold Storage**  
 Released at 3:00 P.M. ET

**Quick Stats** (Agricultural Statistics Data Base)

**I Want To...**

- Make sure I'm counted
- Contact a Specialist
- Request a Special Tabulation
- Find Strategic Plans
- Find charts or maps or geospatial data**
- Visit the NASS Kids site
- Learn About Career Opportunities

**Find NASS Publications**

- Date
- Commodity
- Keyword
- Release Day
- Title
- Browsing our Guide to Products and Services

**Syndication**

U.S. and State Data

# Published Reports


The New York Times

Business


Farmers to Plant Largest Amount of Corn Since '44








# Data and Statistics



United States Department of Agriculture  
National Agricultural Statistics Service



The 2002 Census of Agriculture is the most comprehensive source of statistics portraying our nations agriculture

[Home](#)
[About NASS](#)
[Newsroom](#)
[Publications](#)
[Data and Statistics](#)
[Census](#)
[Surveys](#)
[Help](#)
[Contact Us](#)

You are here: [Home](#) / [Data and Statistics](#)

## Data and Statistics

**Search NASS**

All NASS

- [Advanced Search](#)
- [Search Tips](#)

**Browse NASS by Subject**

- [Crops and Plants](#)
- [Demographics](#)
- [Economics](#)
- [Environmental](#)
- [Livestock and Animals](#)
- [Charts and Maps](#)
- [Education and Outreach](#)

**Statistics by State**

Select a State

**Quick Stats (Agricultural Statistics Data Base)**

NASS publishes U.S., state, and county level agricultural statistics for many commodities and data series. Quick Stats offers the ability to query by commodity, state(s) and year(s), providing the most up-to-date statistics including all revisions. The query dataset can be downloaded for easy use in your database or spreadsheet.

- [Query our Quick Stats Data Base](#)

**Additional Crops County Resources**

Maps of crops county estimates for acreage and yield are available from NASS as both CSV data files and maps.

County data from Quick Stats data is also available in pre-extracted data sets by year and by crop.

**Census of Agriculture**

To query Census of Agriculture data, choose from the Census

**I Want To...**

- [Query NASS Data from a Data Base](#)
- [Search for Data by Commodity](#)
- [Request a Special Tabulation](#)
- [Contact a Specialist](#)
- [View Data in Charts and Maps](#)

**About NASS Estimates**

- [Importance of Ag Estimates](#)
- [Understanding Crop Forecasts](#)
- [Foundation of Estimates](#)
- [Estimating Programs](#)
- [Citation Request](#)

**Also See**

# Quick Stats Data Base

The first census of agriculture was taken in 1840



## Search NASS

All NASS

- o [Advanced Search](#)
- o [Search Tips](#)

## Browse NASS by Subject

- [Crops and Plants](#)
- [Demographics](#)
- [Economics](#)
- [Environmental](#)
- [Livestock and Animals](#)
- [Charts and Maps](#)
- [Education and Outreach](#)

## Statistics by State

Select a State

You are here: [Home](#) / [Data and Statistics](#)

## Data and Statistics

### Quick Stats (Agricultural Statistics Data Base)

NASS publishes U.S., state, and county level agricultural statistics for many commodities and data series. Quick Stats offers the ability to query by commodity, state(s) and year(s), providing the most up-to-date statistics including all revisions. The query dataset can be downloaded for easy use in your database or spreadsheet.

- o [Query our Quick Stats Data Base](#)

### Additional Crops County Resources

Maps of crops county estimates for acreage and yield are available from NASS as both [CSV data files](#) and [maps](#).

County data from Quick Stats data is also available in pre-extracted data sets by year and by crop.

### Census of Agriculture

To query Census of Agriculture data, choose from the [Census](#)

### I Want To...

- o [Query NASS Data from a Data Base](#)
- o [Search for Data by Commodity](#)
- o [Request a Special Tabulation](#)
- o [Contact a Specialist](#)
- o [View Data in Charts and Maps](#)

### About NASS Estimates

- o [Importance of Ag Estimates](#)
- o [Understanding Crop Forecasts](#)
- o [Foundation of Estimates](#)
- o [Estimating Programs](#)
- o [Citation Request](#)

### Also See



# Agricultural Census Data




United States Department of Agriculture  
National Agricultural Statistics Service



The 2002 Census of Agriculture is the most comprehensive source of statistics portraying our nations agriculture




Home
About NASS
Newsroom
Publications
Data and Statistics
Census
Surveys
Help
Contact Us

**Search NASS**

All NASS

- Advanced Search
- Search Tips

**Browse NASS by Subject**

- ▶ Crops and Plants
- ▶ Demographics
- ▶ Economics
- ▶ Environmental
- ▶ Livestock and Animals
- ▶ Charts and Maps
- ▶ Education and Outreach

**Statistics by State**

You are here: [Home](#) / [Census of Agriculture](#)

## 2002 Census of Agriculture

**Census Quick Stats** (Ag statistics for U.S., state, and county)

**Query and Downloadable Options**

**Geographic Area Series Publications**

**U.S. Summary and State Reports**

- U.S. by Table
- All States by Table

---

**State and County Reports**

- State Level by Table
- All Counties by State by Table

---

**Outlying Areas**

- American Samoa PDF
- Puerto Rico Text | PDF | CSV
- Profiles by Municipios
- Commonwealth of the Northern Mariana Islands PDF

**Related Information**

- 2002 Census of Agriculture
- 1997 Census of Agriculture
- 1992 Census of Agriculture
- Data Documentation
- Frequently Asked Questions
- Dates for Ag Census Reports
- Special Tabulations
- Report Forms & Instructions
- Report Form Guide
- Feedback
- Make sure I'm counted

**Census by State**

To view 2002 Census of Agriculture material by state, select a state below.



# Agricultural Census Data

## 2002 Census of Agriculture - Volume 1 Geographic Area Series Census, US - State Data



### 2002 Census of Agriculture Maps and Cartographic Resources



[Agricultural Atlas Maps](#) | [Star Tree Map Index](#) | [Cartographic Boundary Files](#)

The cartographic boundary files are generalized, digital vector files of state- and county-level geographic areas for which 2002 Census of Agriculture data are reported. The cartographic boundary files can be used with Geographic Information System (GIS) software as a base for medium to small-scale thematic mapping.

**These boundary files are not map images.** They were developed to support USDA-NASS projects involving map production for the *2002 Agricultural Atlas of the United States*.

The cartographic boundary files on this site are in ESRI™ shapefile format.

**States only** - [Download Boundary zip file](#), view metadata ([html](#), [text](#))

**Counties only** - [Download Boundary zip file](#), view metadata ([html](#), [text](#))

**States and counties** - [Download Boundary zip file](#)

# Interactive Census Maps

National Agricultural Statistics Service 2002 Census of Agriculture

**United States** | All data items are from Chapter 2 - Table 1. Area Summary Highlights: 2002  
Farms (number)

State:  Data Item:

**Data**

United States Total: 2,128,982

State:  
State Total:

Download data as [CSV](#) | [XML](#) | [PDF](#)

[Help](#) [Print](#)

**Legend**

Scale:   
(Changes the data range based on National or State level)

Comparisons:

Color:

Zero or Data Withheld
≤ 40,000
40,001 to 80,000
80,001 to 120,000
120,001 to 160,000
160,001 >=

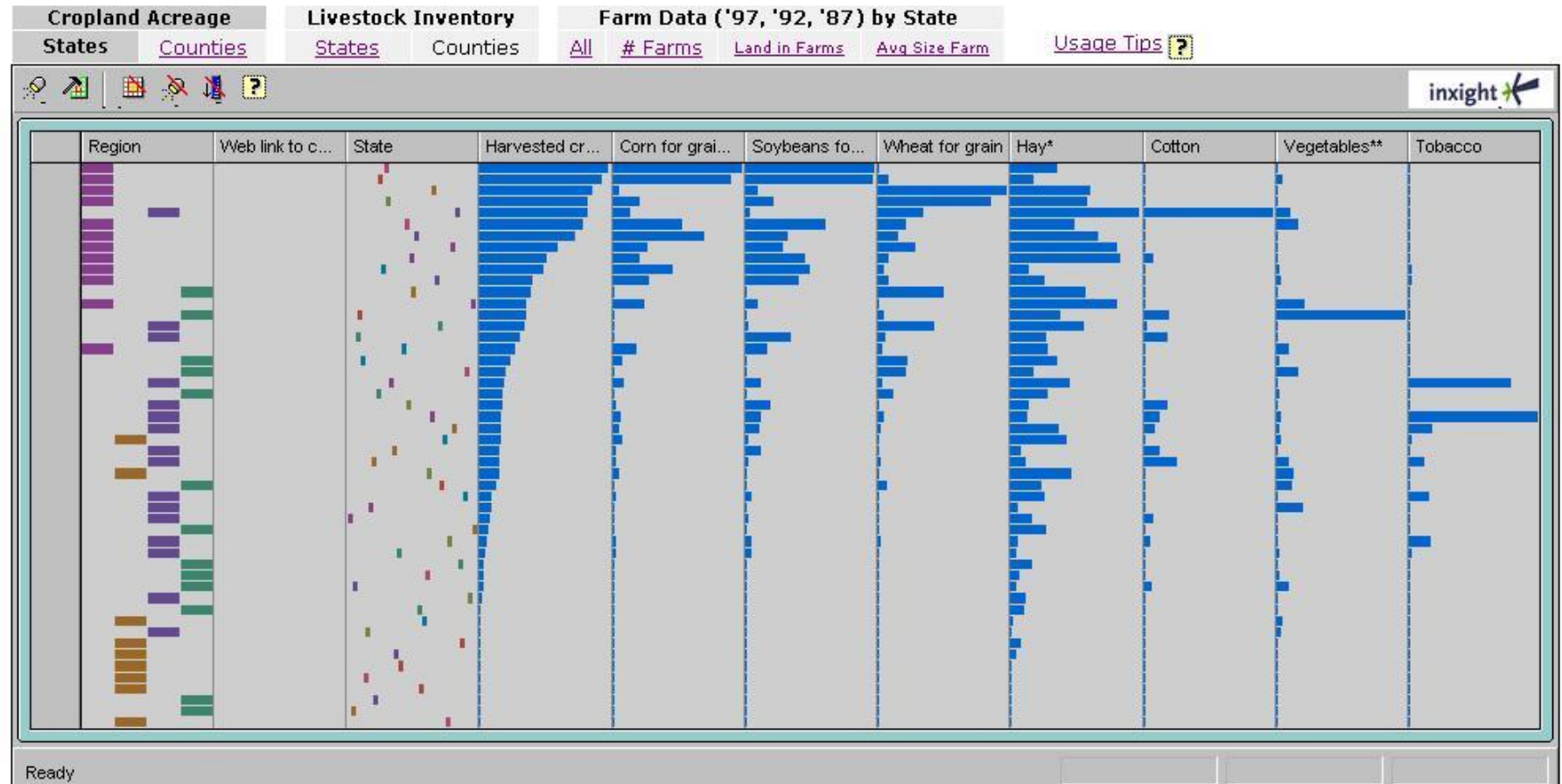
Source: USDA-NASS 2002 Census of Agriculture  
© USDA-NASS 2005-2006

**Navigate:** Mouse-over a specific state/county to view the state/county level data. Right click to zoom (option-click for MAC users). Hold the Alt key and click+drag to pan. For additional assistance with this application, [click here to view the support page.](#)

# Interactive Census Tables

USDA | NASS | Research and Development

## 1997 Census of Agriculture: Harvested Cropland Acreage Data - States




\*Hay-alfalfa, other tame, small grain, wild, grass silage, green chop, etc. \*\*Vegetables harvested for sale.

# Census of Agriculture Atlas

## Specialty Products and Special Studies

---

Minority and Women Principal Operators: 2002 and 1997  
Profiles: State & County  
U.S. Agricultural Atlas Maps   
Quick Facts  
Ranking: Market Value Ag Products  
American Indian Reservations Text | PDF | CSV  
Farm & Ranch Irrigation Survey  
Census of Aquaculture - revised 2/7  
Demographics of U.S. Farm Operators  
Operators by Race Text | PDF | CSV  
New England Region | State

# Agricultural Chemical Use Data

All NASS

- o Advanced Search
- o Search Tips

**Browse NASS by Subject**

- Crops and Plants
- Demographics
- Economics
- Environmental
- Livestock and Animals
- Charts and Maps
- Education and Outreach

**Statistics by State**

Select a State

## Environmental

**I Want To...**

**Find NASS Publications By**

- o Date
- o Commodity
- o Keyword
- o Title
- o Browsing the Catalog

**Receive reports by Email**

- o National
- o State

**Ag Chemical Usage Reports**

---

- Cattle and Cattle Facilities
- Chemical Distribution Rate
- Dairy Cattle and Dairy Facilities
- Field Crops
- Fruits
- Fruit and Vegetable Agricultural Practices
- Livestock and General Farm Use
- Nursery & Floriculture
- Pest Management Practices
- Postharvest
- Restricted Use
- Swine and Swine Facilities
- Vegetables

**Agricultural Chemical Use Data Base**

---


Agricultural Chemical Use Data Base offers interactive access to statistics by year, by state, and by commodity.

**Also See**

- o Research Reports

**Census of Agriculture**

- o 2002
- o 1997
- o 1992



# http://www.nass.usda.gov/research

Go

All NASS

- o Advanced Search
- o Search Tips

**Browse NASS by Subject**

- Crops and Plants
- Demographics
- Economics
- Environmental
- Livestock and Animals
- Charts and Maps
- Education and Outreach

**Statistics by State**

Select a State

## Charts and Maps

### Charts and Maps by Commodity

**Crops and Plants**

- o A to Z
- o Crop Progress & Condition
- o County Maps
- o Field Crops
- o Specialty Crops
- o Dry Beans, Dry Peas, and Lentils
- o Floriculture Crops
- o Citrus Fruits
- o Noncitrus Fruits
- o Cold Storage, Crops

**Livestock and Animals**

- o A to Z
- o Cattle
- o Meat Animals - Production, Disposition, and Income
- o Dairy Products
- o Hogs and Pigs
- o Milk Production and Milk Cows
- o Poultry
- o Sheep and Lambs
- o Livestock Slaughter
- o Cold Storage, Livestock

**Economics**

- o A to Z
- o Agricultural Prices

**Also See**

- o **Frequently Asked Questions**
- o **NASS Contacts**
- o **Estimating Programs**
- o **Query NASS Data from a Data Base**

---

**Geo Spatial Data**

- o **Vegetation Condition Images**
- o **Cropland Data Layer**  
2003 Image Gallery available for these states:  
Arkansas, Illinois, Indiana, Iowa, N. Dakota, Mississippi, Missouri, Nebraska, Wisconsin
- o **Land Use Strata for Selected States**
- o **Seasonal Summary of Crop Progress and Condition/All Crops and All States**
- o **Remotely Sensed Data**  
Crop Acreage  
Crop Yield  
Future Vision

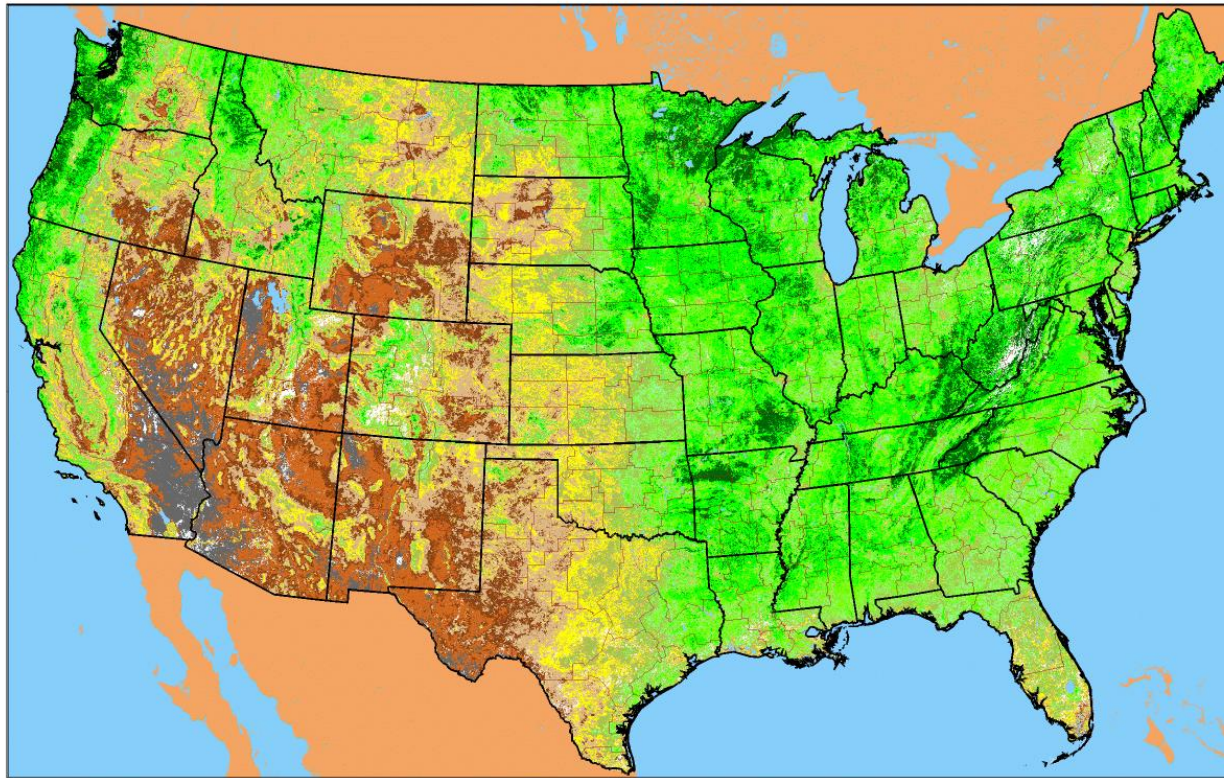
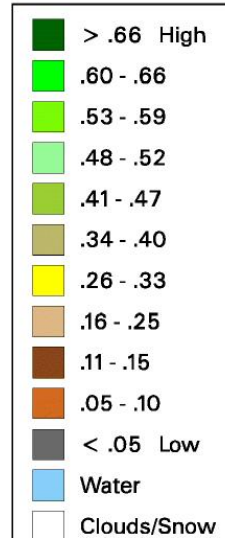


# Vegetation Condition Images

Conterminous U.S. Vegetation Condition - 2006  
Period 28 (6/28 - 7/11)

No Water Vapor  
Correction Applied

## Vegetation Index



0 100 200 300 400 500 Miles

Agricultural Statistics Districts

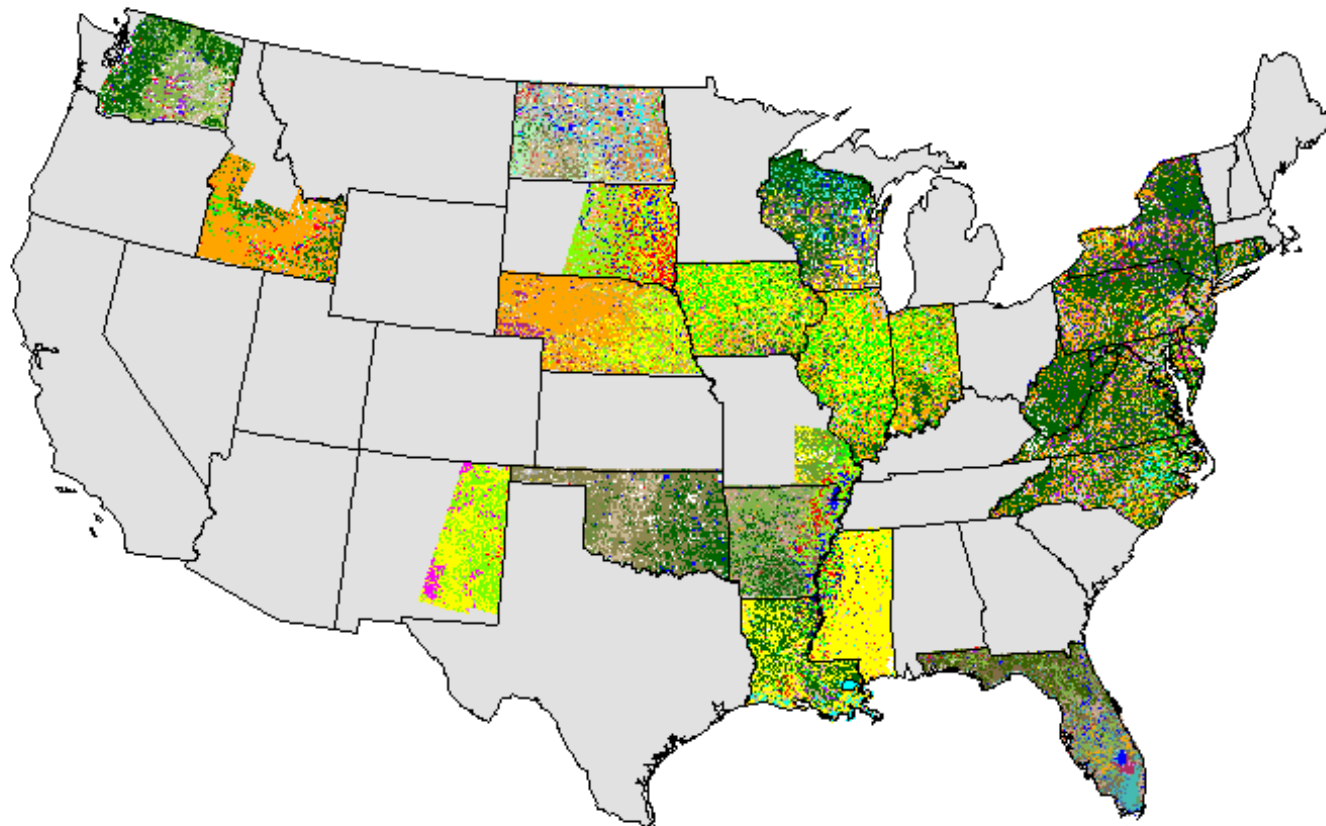
1:15,000,000

Original Imagery: NOAA-17 AVHRR  
Resolution: 1 Kilometer  
Composite Imagery: USGS EROS Data Center  
Questions or Comments Call: (703)877-8000

For Additional Images Please See:  
<http://www.nass.usda.gov/research>  
To Download Raw Images:  
<http://www.nass.usda.gov/research/avhrr/scene-ftp/>



# Cropland Data Layers Program /



**Cropland Data Layers - The First Decade**



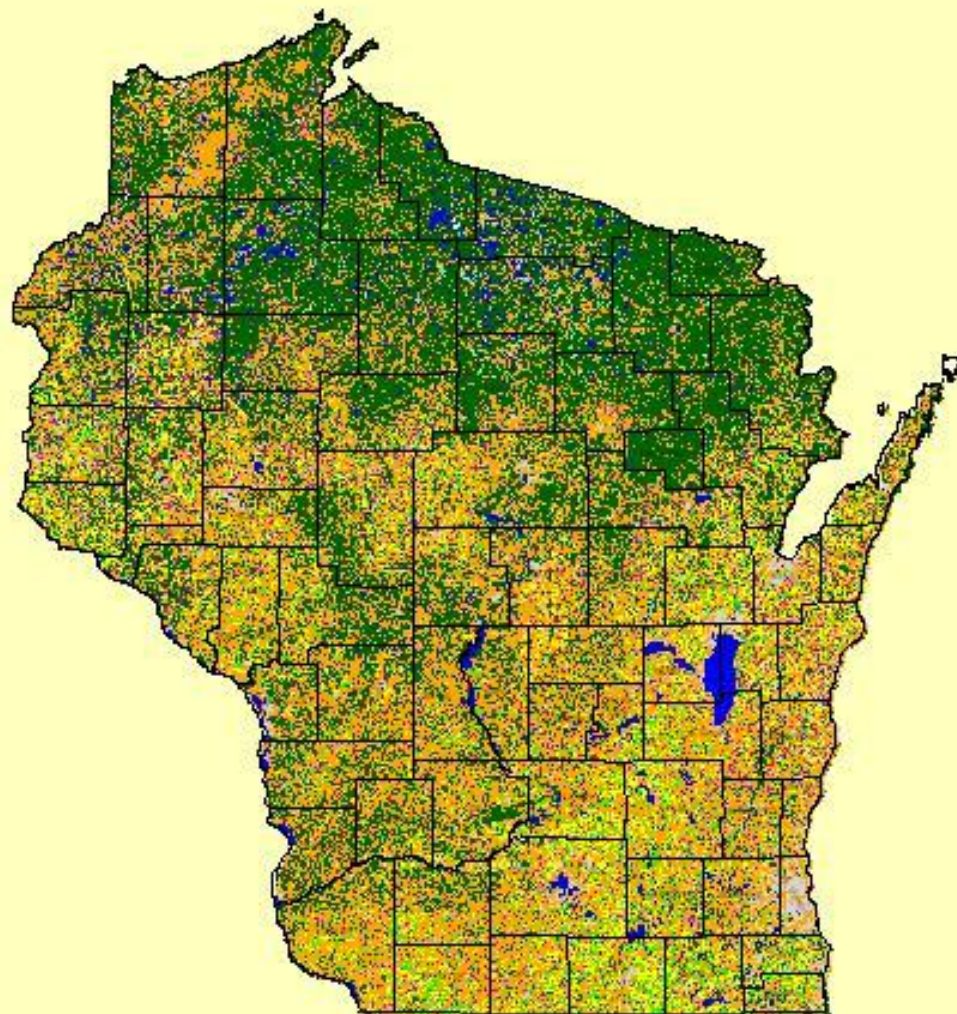
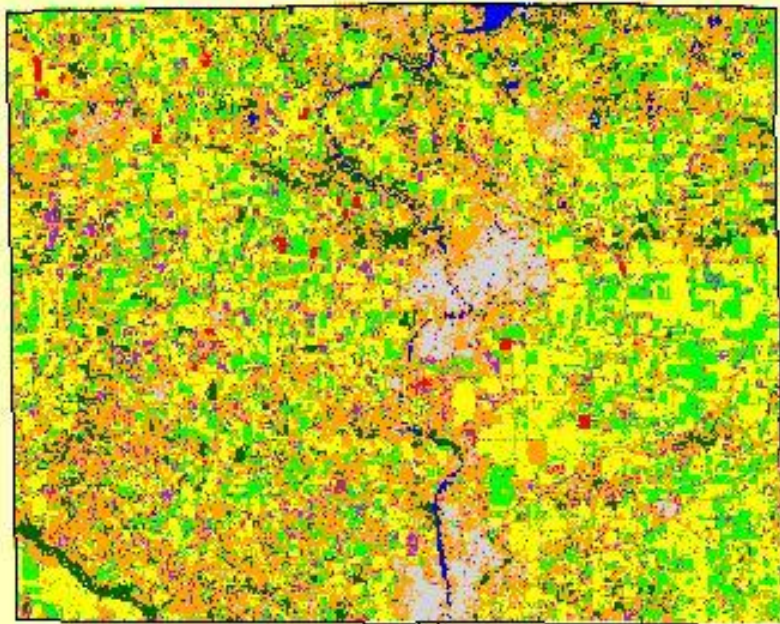
# Cropland Data Layer Images

## Wisconsin

### Land Use Categories

 Corn	 Winter Wheat	 Woodland
 Soybeans	 Other Small Grains & Hay	 Urban
 Potatoes	 Other Crops	 Wetlands
 Orchards	 Pasture/Grass/Fallow/Non-Ag	 Water
		 Clouds

Rock County



# Crop Progress & Condition

You are here: [Home](#) / [Publications](#) / [National Crop Progress](#)

## Publications

### National Crop Progress

**Search NASS**

All NASS ▾

- [Advanced Search](#)
- [Search Tips](#)

**Browse NASS by Subject**

- [Crops and Plants](#)
- [Demographics](#)
- [Economics](#)
- [Environmental](#)
- [Livestock and Animals](#)
- [Charts and Maps](#)
- [Education and Outreach](#)

**Statistics by State**

Select a State ▾

**U.S. Reports**

- [Crop Progress Reports](#)
- [Graphics for current week](#)
- [Weekly Weather & Crop Bulletin](#)
- [Historical Data](#)

**General Information**

**Timetables**

- [Corn, Cotton, and Sorghum](#)
- [Soybeans, Rice, and Spring Wheat](#)
- [Peanuts, Barley, Oats, and Winter Wheat](#)
- [Conditions](#)

[Terms and Definitions](#)

[Usual Planting & Harvesting Dates \(PDF\)](#)

---

**Also See**

- [Crop Progress & Condition - State](#)
- [The Joint Agricultural Weather Facility](#)
- [USDA Plant Hardiness Zone Map](#)

**I Want To...**

- [Contact a Specialist](#)

**Find NASS Publications By**

- [Date](#)
- [Commodity](#)
- [Keyword](#)
- [Release Day](#)
- [Title](#)
- [Browsing the Catalog](#)

**Syndication**

[Today's Reports](#)

[News & Events](#)

[Audio Broadcasts](#)

[RSS \(all feeds\)](#) | [What is RSS?](#)

**Receive reports by Email**

[National](#) | [State](#)

[Printed Publications Price List](#)

---

**Also See**

- [Research Reports](#)

# Land Use Strata Data



U.S. Department of Agriculture  
National Agricultural Statistics Service  
Research and Development Division

Search:

Go

Office  
of the  
Director

Census and Survey Research Branch  
[Data Quality](#) | [Statistical Methodology](#)

Geospatial Information Branch  
[Area Frame](#) | [Spatial Analysis](#)

Missouri Land Use Strata - [FAQ's](#) ([View other states' land use strata](#))

## Available states:

[Arkansas](#)  
[Delaware](#)  
[Indiana](#)  
[Iowa](#)  
[Louisiana](#)  
[Maryland](#)  
[Mississippi](#)  
**Missouri**  
[New Jersey](#)  
[Oregon](#)  
[Pennsylvania](#)  
[Tennessee](#)  
[Virginia](#)  
[Wisconsin](#)



**View PDF \***

[Color](#) | [B&W](#)

**View 640x480 JPEG**

[Color](#) | [B&W](#)

**View full size JPEG**

[Color](#) | [B&W](#)

**Download files:**

[mo\\_strata\\_c.avl](#) (color legend)  
[mo\\_strata\\_bw.avl](#) (B&W legend)  
[mo\\_strata\\_dd.dbf](#) (attribute file)  
[mo\\_strata\\_dd.shp](#) (shapefile)  
[mo\\_strata\\_dd.shx](#) (index file)

# Historical Data

# <http://www.nass.usda.gov>

- NASS is *the* source for U.S. agricultural statistics
- Geospatial data - NASS Research and Development Division
- Use in economic, environmental and demographic analysis.